



FORTIN THAR-ONE-HON8 2020 Honda Pilot Push Button Remote Starters and Systems Installation Guide

[Home](#) » [FORTIN](#) » FORTIN THAR-ONE-HON8 2020 Honda Pilot Push Button Remote Starters and Systems Installation Guide 

Contents

- [1 FORTIN THAR-ONE-HON8 2020 Honda Pilot Push Button Remote Starters and Systems](#)
- [2 Product Information](#)
- [3 Product Usage Instructions](#)
- [4 REGULAR INSTALLATION](#)
- [5 DESCRIPTION](#)
- [6 AUTOMATIC TRANSMISSION WIRING CONNECTION](#)
- [7 DCRYPTOR PROGRAMMING PROCEDURE](#)
- [8 REMOTE STARTER PROGRAMMING PROCEDURE](#)
- [9 REMOTE STARTER FUNCTIONALITY](#)
- [10 Documents / Resources](#)
- [11 Related Posts](#)



FORTIN THAR-ONE-HON8 2020 Honda Pilot Push Button Remote Starters and Systems



Product Information

- **Product Name:** Immobilizer Bypass
- **Model:** THAR-ONE-HON8
- **Compatibility:** Honda vehicles (Pilot, Ridgeline, Passport) with push-to-start ignition
- **Features:**
 - Lock and unlock the vehicle
 - Arm and disarm the security system
 - Open the trunk
 - Activate the horn
 - Turn on/off parking lights
 - Monitor door, trunk, hood, hand-brake, and foot-brake status
 - Support OEM remote monitoring
 - Compatible with R.S. OEM remote
- **Installation:** Requires a qualified technician to install. Incorrect connections can cause permanent damage to the vehicle.

Product Usage Instructions

1. Make sure the product is compatible with your Honda vehicle (Pilot, Ridgeline, Passport) with push-to-start ignition.
2. If needed, add the firmware version and options using the FLASH LINK UPDATER or FLASH LINK MOBILE tool (sold separately).
3. Program the bypass option:
 - Select UNIT OPTION C1 for push-to-start ignition.
 - Select UNIT OPTION D6 for program remote starter option for R.S. OEM REMOTE STAND ALONE.
4. For vehicles that can be remote started with the hood open, set FUNCTION A11 to OFF and install the

included HOOD PIN SWITCH.


5. Ensure proper connections are made for parking lights:


- At Parking Light Harness: Connect the (-) parking lights wire.
- At the steering lock module under the steering column: Follow the provided wire color codes for different functions.

6. Cut the loop for automatic transmission mode if applicable.

7. Connect the T-HARNESS – HARNAIS EN T (THAR-ONE-HON8) to the appropriate connectors in your Honda vehicle.

REGULAR INSTALLATION

			Vehicle functions supported in this diagram (functional if equipped) Fonctions du véhicule supportées dans ce diagramme (fonctionnelles si équipé)																	
			Immobilizer bypass Contournement d'immobilisateur	T-Harness Harnais en T	Lock	Unlock	Arm	Disarm	Trunk (open)	Horn	Parking Lights	AutoLights OFF	Tachometer	Door Status	Trunk Status	Hood Status*	Hand-Brake Status	Foot-Brake Status	OEM Remote Monitoring	R.S. OEM remote Stand Alone compatible
VEHICLE VEHICULES	YEARS ANNÉES																			
HONDA																				
Pilot	Push-to-Start	2016-2022																		
Ridgeline	Push-to-Start	2017-2023																		
Passport	Push-to-Start	2019-2023																		



BYPASS FIRMWARE VERSION


VERSION LOGICIELLE CONTOURNEMENT

73.[38]

HONDA/ACURA MINIMUM

To add the firmware version and the options, use the FLASH LINK UPDATER or FLASH LINK MOBILE tool, sold separately.

Pour ajouter la version logicielle et les options, utilisez l'outil FLASH LINK UPDATER ou FLASH LINK MOBILE, vendu séparément.



Program bypass option:

Programmez l'option du contournement:

UNIT OPTION

OPTION UNITÉ

C1

D6


DESCRIPTION

OEM Remote status (Lock/Unlock) monitoring

Suivi des status (Verrouillage/Déverrouillage) de la télécommande d'origine

Push-to-Start

Push-to-Start



Program bypass option

(If equipped with OEM alarm):

Programmez l'option du contournement

(Si équipé d'une alarme d'origine):

UNIT OPTION


OPTION UNITÉ

D2

DESCRIPTION

Unlock before / Lock after (Disarm OEM alarm)

Déverrouille avant / Verrouille après (Désarme l'alarme d'origine)



Program remote starter option for R.S. OEM REMOTE STAND ALONE:

Programmez l'option démarreur à distance pour TÉLÉCOMMANDE D'ORIGINE STAND ALONE:

FUNCTION

FONCTION

38

MODE

2

DESCRIPTION

Enable

Press 3x Lock to remote start with the OEM remote.

Activé

Appuyez x3 sur Verrouille de la télécommande d'origine pour démarrer à distance le véhicule.

* HOOD PIN

HOOD STATUS : THE HOOD PIN SWITCH MUST BE INSTALLED IF THE VEHICLE CAN BE REMOTE STARTED WITH THE HOOD OPEN, SET FUNCTION A11 TO OFF.

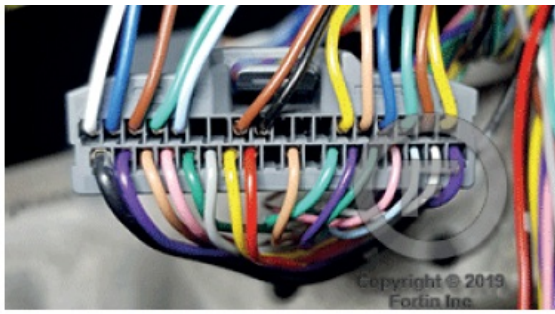


Notice: the installation of safety elements are mandatory. The hood pin is an essential security element and must be installed.

THIS MODULE MUST BE INSTALLED BY A QUALIFIED TECHNICIAN. A WRONG CONNECTION CAN CAUSE PERMANENT DAMAGE TO THE VEHICLE.

DESCRIPTION

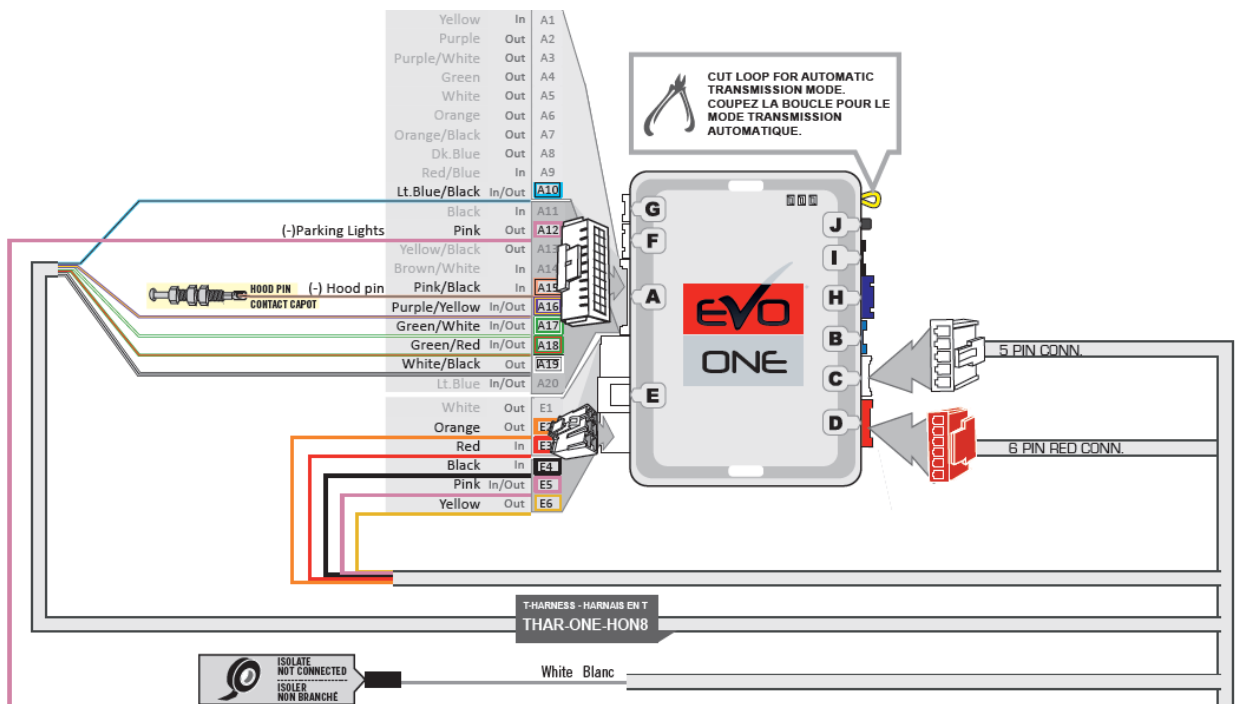


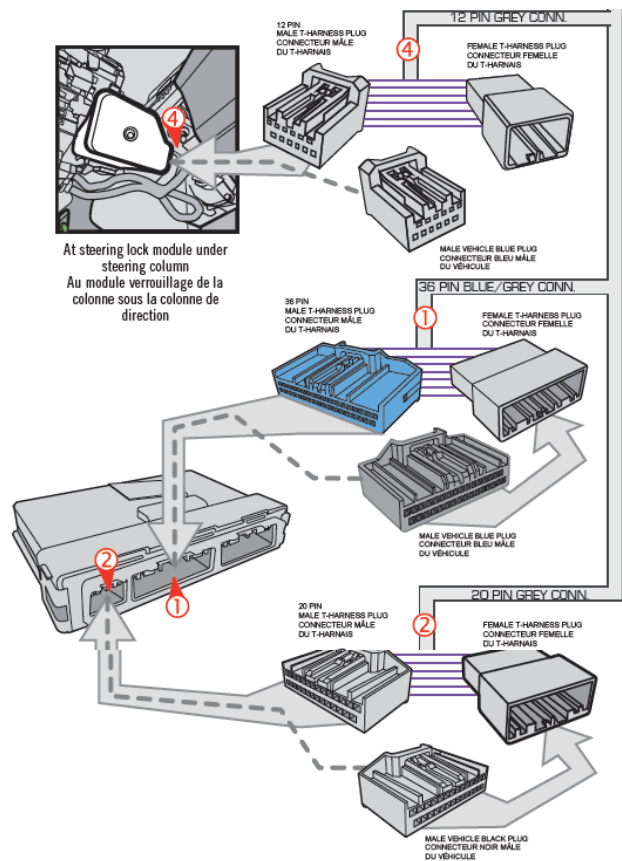
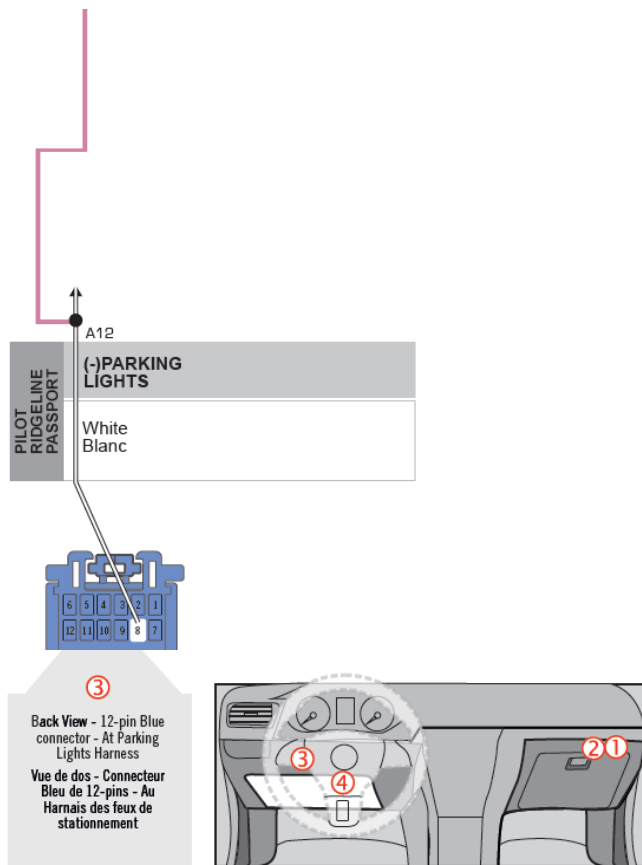


②



AUTOMATIC TRANSMISSION WIRING CONNECTION





DCRYPTOR PROGRAMMING PROCEDURE



Parts required (not included)

- 1x **FLASH LINK UPDATER**
- 1x **FLASH LINK MANAGER**
SOFTWARE | PROGRAMME
- 1x Microsoft Windows Computer with Internet connection
Ordinateur Microsoft Windows avec connection Internet

Pièces requises (non incluses)

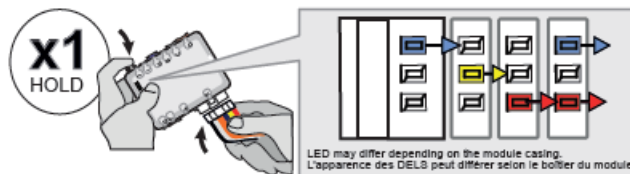
- 1x **FLASH LINK MOBILE**
- 1x **FLASH LINK MOBILE APP**
- Smartphone Android or iOS with Internet connection
(Internet provider charges may apply)
Téléphone Intelligent Android ou iOS avec connection Internet
(des frais du fournisseur Internet peuvent s'appliquer)

OR
OU



BEFORE PROGRAMMING SET THE UNIT OPTIONS AND SAVE. | AVANT LA PROGRAMMATION CONFIGURER LES OPTIONS DE L'UNITÉ ET SAUVEGARDER.

1



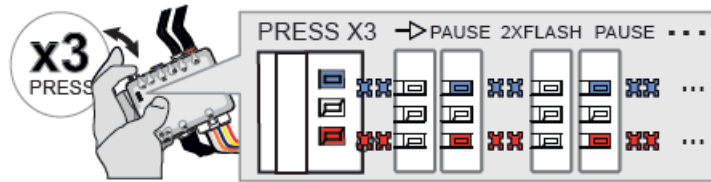
2



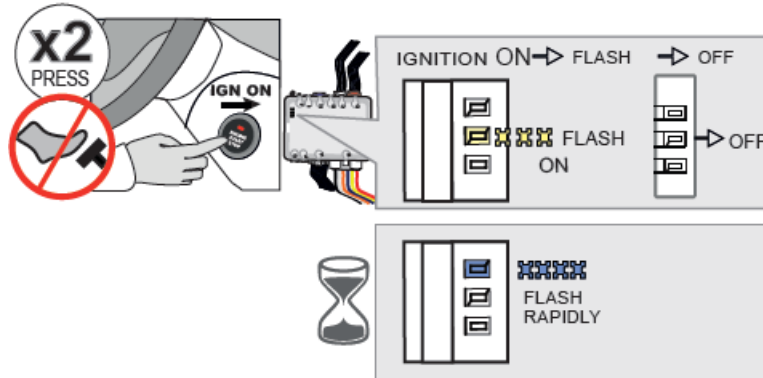
3



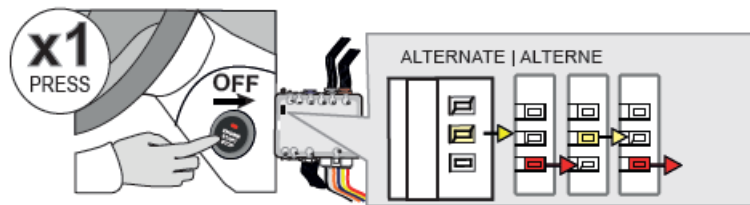
4



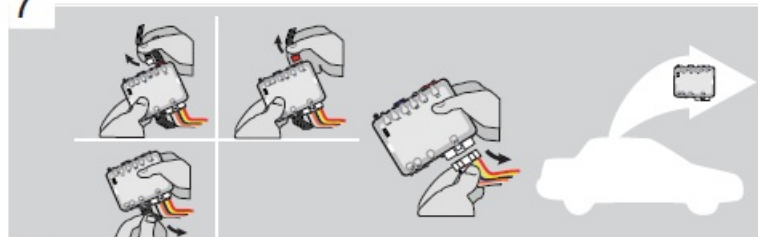
5



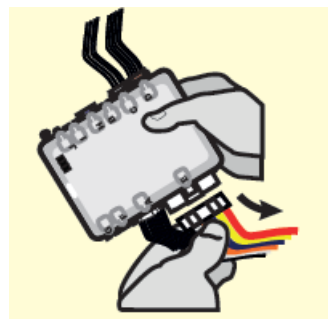
6



7



1. Press and hold the programming button: Connect the 6-PIN Main harness (White connector).
 1. The Blue, Red, Yellow and Blue & Red LEDs will alternatively illuminate.
2. Release the programming button when the Blue & Red LEDs are ON.
 - If the Blue & Red LEDs are not ON solid disconnect the 6-PIN Data-Link and go back to step 1.



3. Connect the required remaining harnesses
4. Press and release the programming button three times (3x).
 1. The Red and Blue LEDs will alternate between 2 flashes and a pause
5. Do not press the brake pedal. Press the START/STOP button twice to turn ON the ignition.
 1. Wait for the Yellow Led to flash rapidly.
 2. Wait for the Blue LED to flash rapidly.

6. Press the Push-to-Start button once to turn off the ignition.

1. The Red and Yellow LEDs will start flashing alternatively

7. Disconnect all connectors and after the 6-Pin (Main-Harness) or the 4-Pin Data-link connector.

8

Microsoft Windows Computer with Internet connection*
Ordinateur Microsoft Windows avec connection Internet*

FLASH LINK UPDATER* **FLASH LINK MANAGER***
SOFTWARE | PROGRAMME

OR OU

Smartphone* (Internet provider charges may apply)
Téléphone Intelligent* (des frais du fournisseur Internet peuvent s'appliquer)

VEHICLE'S OBDII CONNECTOR
CONNECTEUR OBDII DU VÉHICULE

FLASH LINK MOBILE*

Use the tool: **FLASH LINK UPDATER** or **FLASH LINK MOBILE** to visit the DCryptor menu.

Utilisez l'outil: **FLASH LINK UPDATER** ou **FLASH LINK MOBILE** pour visiter le menu DCryptor.

***Parts required (not included) *Pièces requises (non incluses)**

9

AFTER DCRYPTOR PROGRAMMING COMPLETED
Go back to the vehicle and **reconnect** the 6-Pin (Main-Harness) or the 4-pins (Data-Link) connector and after all the remaining connector.

APRÈS LA PROCÉDURE DE PROGRAMMATION DCRYPTOR COMPLÉTÉE : **retournez** au véhicule et **rebranchez** le connecteur 6-pins (Connecteur principal) ou le 4-pins (Data-Link) et après tous les connecteurs.

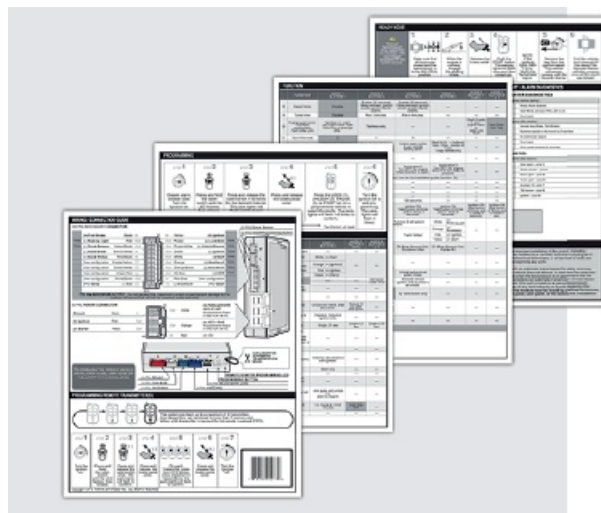
REMOTE STARTER / ALARM VERIFICATION
PROCÉDURE | PROCÉDURE DE VÉRIFICATION
DU DÉMARREUR À DISTANCE / ALARME

The module is now programmed.
Le module est programmé.

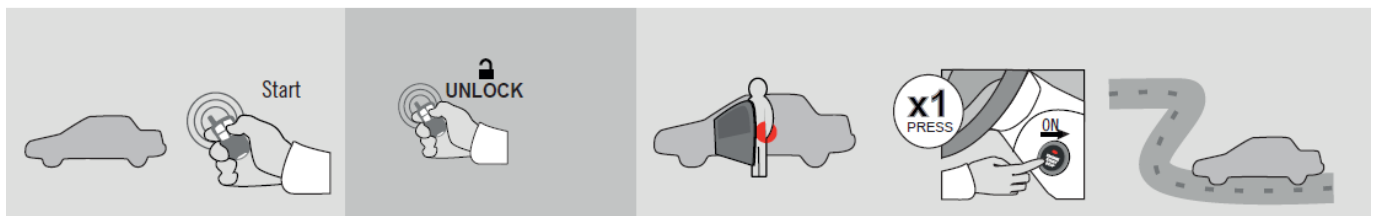
Test the remote starter. Remote start the vehicle.
Testez le démarreur à distance. Démarrez le véhicule à distance.

REMOTE STARTER PROGRAMMING PROCEDURE

REFER TO THE QUICK INSTALL GUIDE INCLUDED WITH THE MODULE FOR THE REMOTE STARTER PROGRAMMING.



REMOTE STARTER FUNCTIONALITY



- All doors must be closed.
- Unlock the doors with either:
 - The OEM remote
 - The remote-starter remote
 - Or the proximity remote
- Enter the vehicle with the SMART-KEY.
- DO NOT PRESS THE BRAKE PEDAL. Press and release the Push-to-Start button once.
- Press the brake pedal. The vehicle can now be put in to gear and driven. If the Smart-Key is not detected the vehicle will shut down.

Notice: Updated Firmware and Installation Guides

Updated firmware and installation guides are posted on our web site on a regular basis. We recommend that you update this module to the latest firmware and download the latest installation guide(s) prior to the installation of this product.

WARNING

The information on this sheet is provided on an (as is) basis with no representation or warranty of accuracy whatsoever. It is the sole responsibility of the installer to check and verify any circuit before connecting to it. Only a computer safe logic probe or digital multimeter should be used. FORTIN ELECTRONIC SYSTEMS assumes absolutely no liability or responsibility whatsoever pertaining to the accuracy or currency of the information supplied. The installation in every case is the sole responsibility of the installer performing the work and FORTIN

ELECTRONIC SYSTEMS assumes no liability or responsibility whatsoever resulting from any type of installation, whether performed properly, improperly or any other way. Neither the manufacturer or distributor of this module is responsible of damages of any kind indirectly or directly caused by this module, except for the replacement of this module in case of manufacturing defects. This module must be installed by qualified technician. The information supplied is a guide only. This instruction guide may change without notice. Visit www.fortinbypass.com to get the latest version.

Copyright © 2006-2018, FORTIN AUTO RADIO INC ALL RIGHTS RESERVED PATENT PENDING

TECH SUPPORT

Tél: 514-255-HELP (4357)

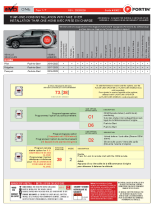
1-877-336-7797

ADDENDUM GUIDE

www.fortinbypass.com

WEB UPDATE

Documents / Resources



[FORTIN THAR-ONE-HON8 2020 Honda Pilot Push Button Remote Starters and Systems](#) [pdf] Installation Guide
THAR-ONE-HON8 2020 Honda Pilot Push Button Remote Starters and Systems, THAR-ONE-HON8 2020, Honda Pilot Push Button Remote Starters and Systems, Button Remote Starters and Systems, Starters and Systems