



FORTIN SUB1-WRX Immobilizer Bypass Module Owner's Manual

[Home](#) » [FORTIN](#) » FORTIN SUB1-WRX Immobilizer Bypass Module Owner's Manual 

Contents

- [1 FORTIN SUB1-WRX Immobilizer Bypass Module](#)
- [2 Product Usage Instructions](#)
- [3 DESCRIPTION](#)
- [4 AUTOMATIC TRANSMISSION WIRING CONNECTION](#)
- [5 PROGRAMMING PROCEDURE](#)
- [6 FAQ](#)
- [7 Documents / Resources](#)
 - [7.1 References](#)
- [8 Related Posts](#)



FORTIN SUB1-WRX Immobilizer Bypass Module



Product Information

Specifications:

- Vehicle Compatibility: Subaru WRX, WRX-STi 2015-2021, 2015-2018
- Bypass Firmware Version: 84.[11]
- Parts Required for Installation:
 - For Automatic Transmission: 1x THAR-ONE-SUB1, 1x fuse, 1x 1Amp Diodes, 1x 6Amp Diode
 - For Manual Transmission: 1x THAR-ONE-SUB1, 1x fuse, 2x 1Amp Diodes, 1x 6Amp Diode

Product Usage Instructions

Installation Steps:

1. Ensure mandatory components are installed such as the hood pin switch.
2. Connect the immobilizer bypass T-Harness according to the suggested wiring configuration provided.
3. Program the bypass option using the FLASH LINK UPDATER or FLASH LINK MOBILE tool.

Wiring Configuration:


Follow the color-coded wiring instructions to connect various functions such as lock, unlock, horn, trunk status, etc., to the corresponding vehicle components.

Function Settings:

Set function A11 to OFF if the vehicle can be remote started with the hood open.

Security Measures:

It is crucial to have this module installed by a qualified technician to prevent any damage to the vehicle due to incorrect connections.


		Vehicle functions supported in this diagram (functional if equipped)														
VEHICLE	YEARS	Immobilizer bypass	T-Harness	Lock	Unlock	Arm	Disarm	Horn	Trunk (open)	Parking Lights	Power lift gate	Tachometer	Door Status	Trunk Status	Hand-Brake Status	Foot-Brake Status
																
SUBARU																
WRX	2015-2021	•	•	•	•	•	•	•	•	•	•	•	•	•	•	•
WRX - STi	2015-2018	•	•	•	•	•	•	•	•	•	•	•	•	•	•	•




BYPASS FIRMWARE VERSION

To add the firmware version and the options, use the FLASH LINK UPDATER or FLASH LINK MOBILE tool, sold separately.

84.[11]
MINIMUM

	Program bypass option:	UNIT OPTION		DESCRIPTION
		C1		OEM Remote status (Lock/Unlock) monitoring
	Program bypass option (If equiped with OEM alarm):	D2		Unlock before / Lock after (Disarm OEM alarm)
IF THE VEHICLE <u>IS NOT</u> EQUIPPED WITH FUNCTIONAL HOOD PIN:		A11	OFF NON	Hood trigger (Output Status).

	Program remote starter option for R.S. OEM REMOTE STAND ALONE:	FUNCTION	MODE	DESCRIPTION
		38	2	Enable : Press 3x Lock to remote start with the OEM remote.

Parts required (Not included)				PAGE
WIRE TO WIRE DIAGRAM				
AUTOMATIC TRANSMISSION	1x fuse 1x 1Amp Diodes 1x 6Amp Diode	1x Fusible 1x Diodes 1Amp 1x Diode 6Amp		Page 3
MANUAL TRANSMISSION	1x fuse 2x 1Amp Diodes 1x 6Amp Diode	1x Fusible 2x Diodes 1Amp 1x Diode 6Amp		Page 4
THARNESSE DIAGRAM				
THARNESSE THAR-ONE-SUB1	AUTOMATIC TRANSMISSION	1x THAR-ONE-SUB1	1x THAR-ONE-SUB1	Page 5
THARNESSE THAR-ONE-SUB1	MANUAL TRANSMISSION	1x THAR-ONE-SUB1	1x THAR-ONE-SUB1	Page 6

MANDATORY INSTALL



HOOD PIN

HOOD STATUS : THE HOOD PIN SWITCH (INCLUDED) MUST BE INSTALLED IF THE VEHICLE CAN BE REMOTE STARTED WITH THE HOOD OPEN, SET FUNCTION A11 TO OFF.



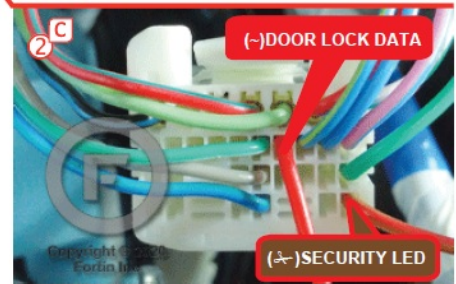
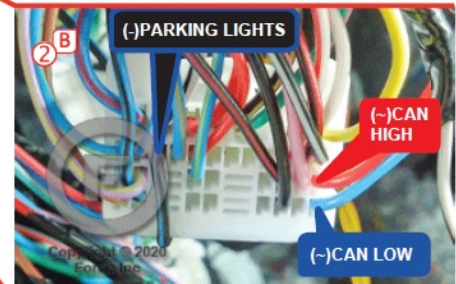
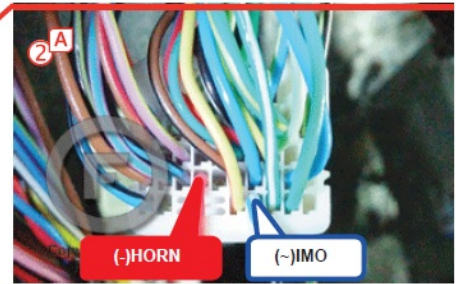
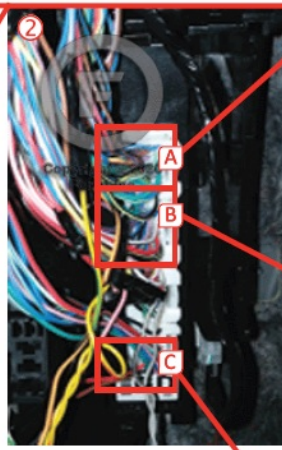
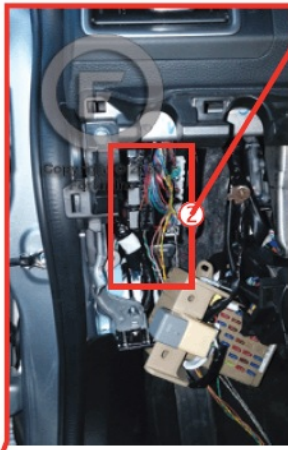
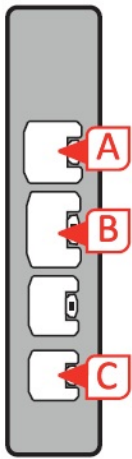
SECURITY STICKER



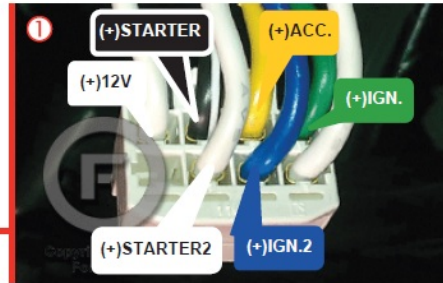
Notice: the installation of safety elements are mandatory. The hood pin and the sticker are essential security elements and must be installed.
THIS MODULE MUST BE INSTALLED BY A QUALIFIED TECHNICIAN. A WRONG CONNECTION CAN CAUSE PERMANENT DAMAGE TO THE VEHICLE.

DESCRIPTION

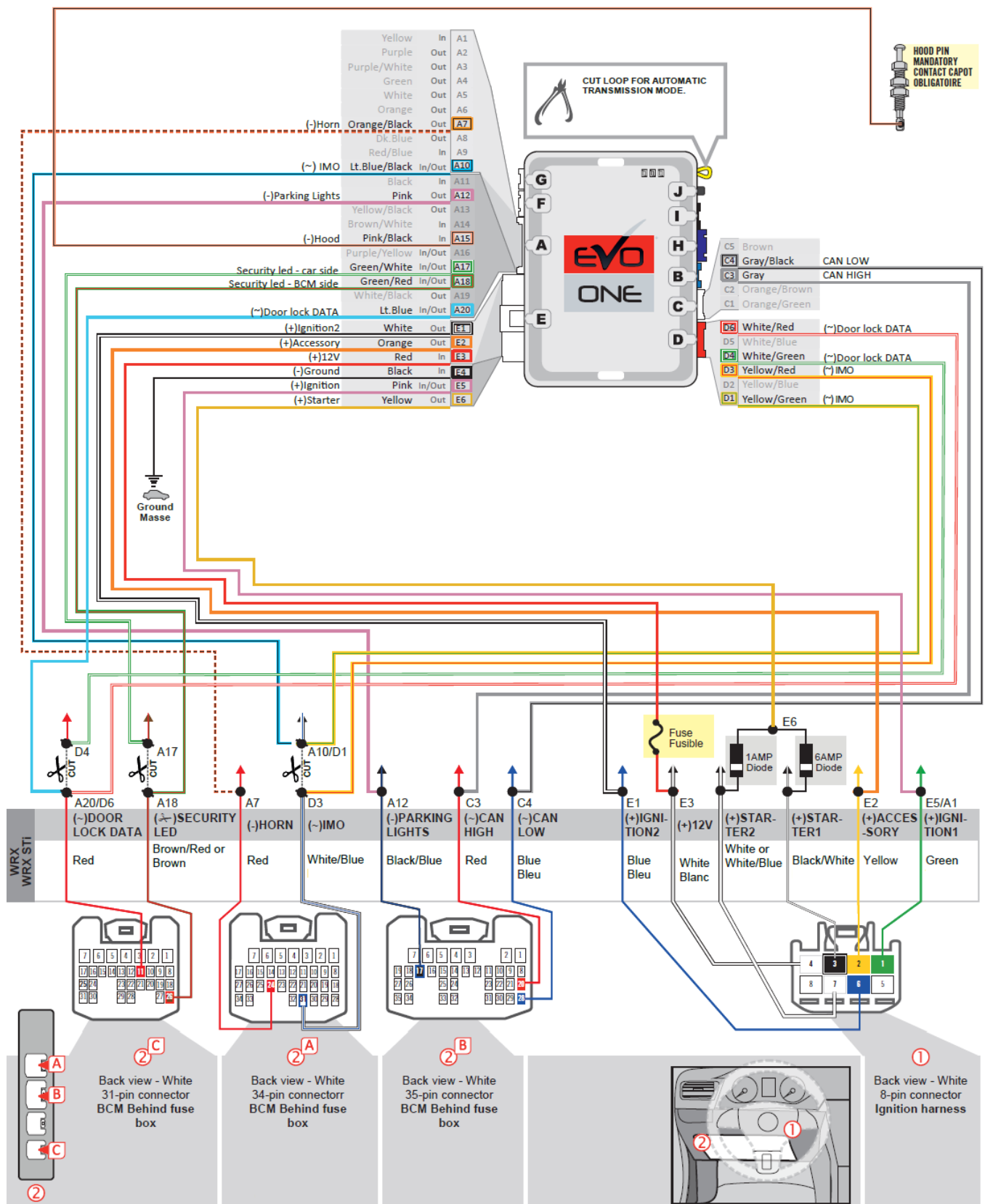
② BCM Behind fuse box



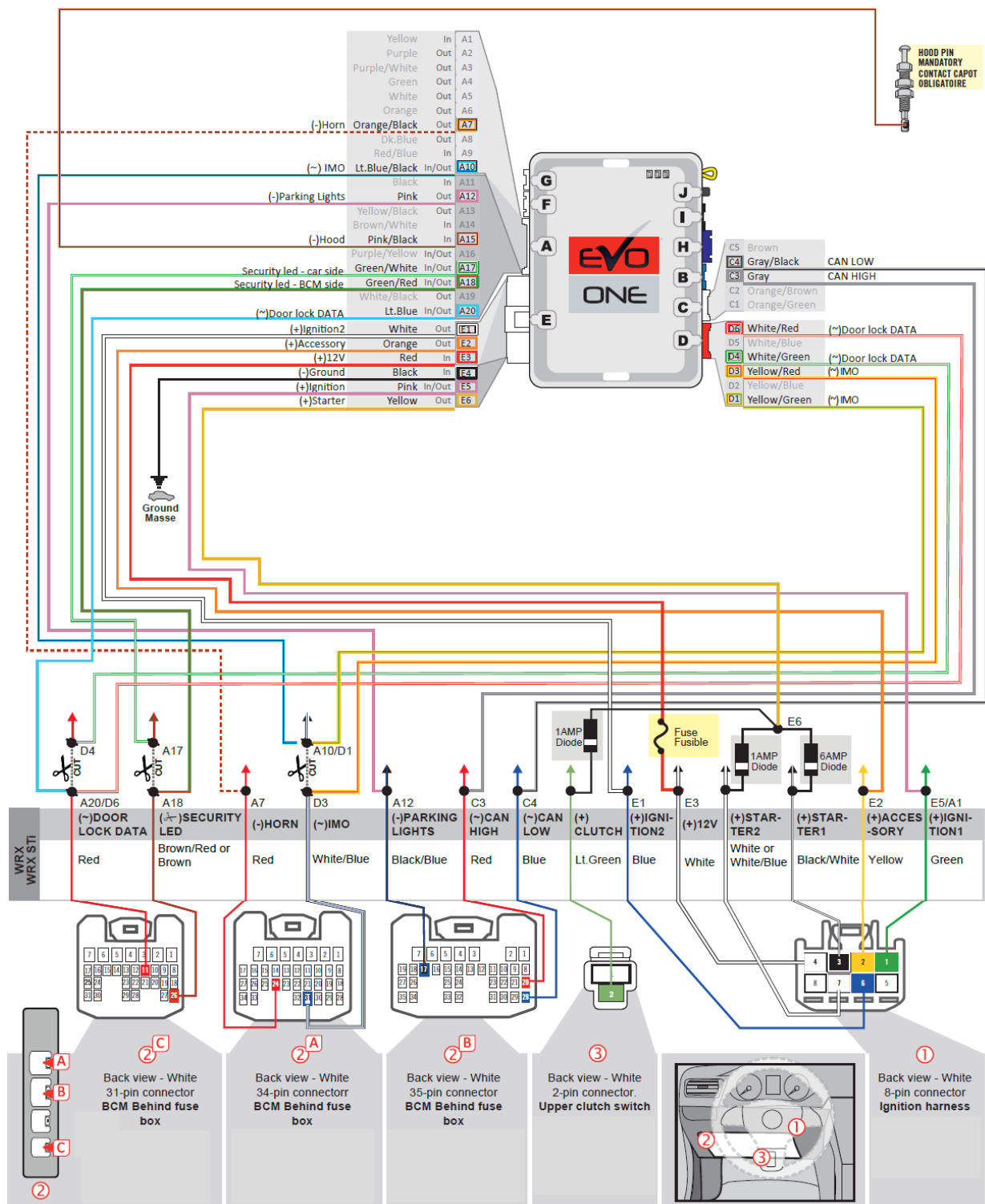
① Ignition harness



AUTOMATIC TRANSMISSION WIRING CONNECTION

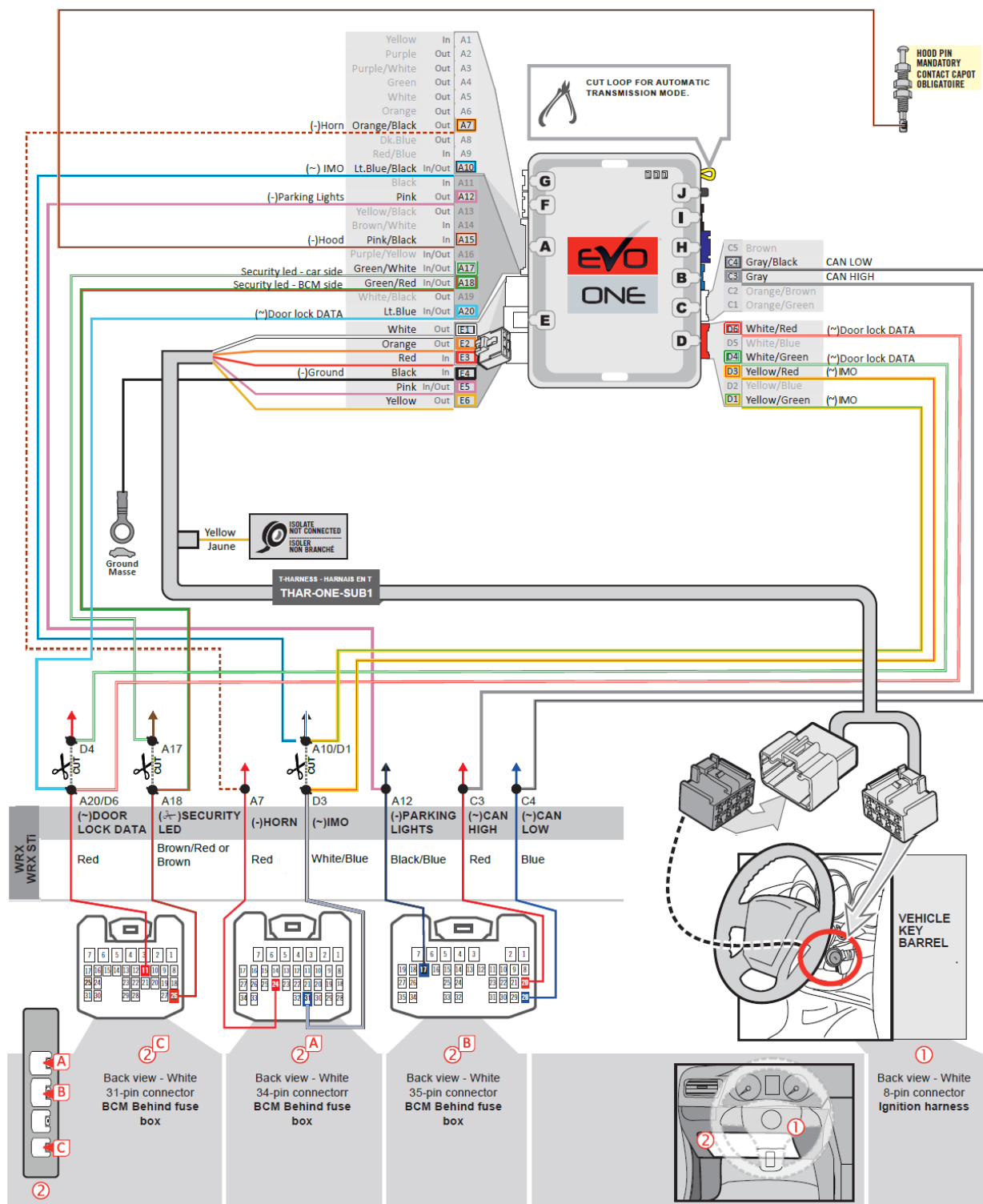


MANUAL TRANSMISSION WIRING CONNECTION



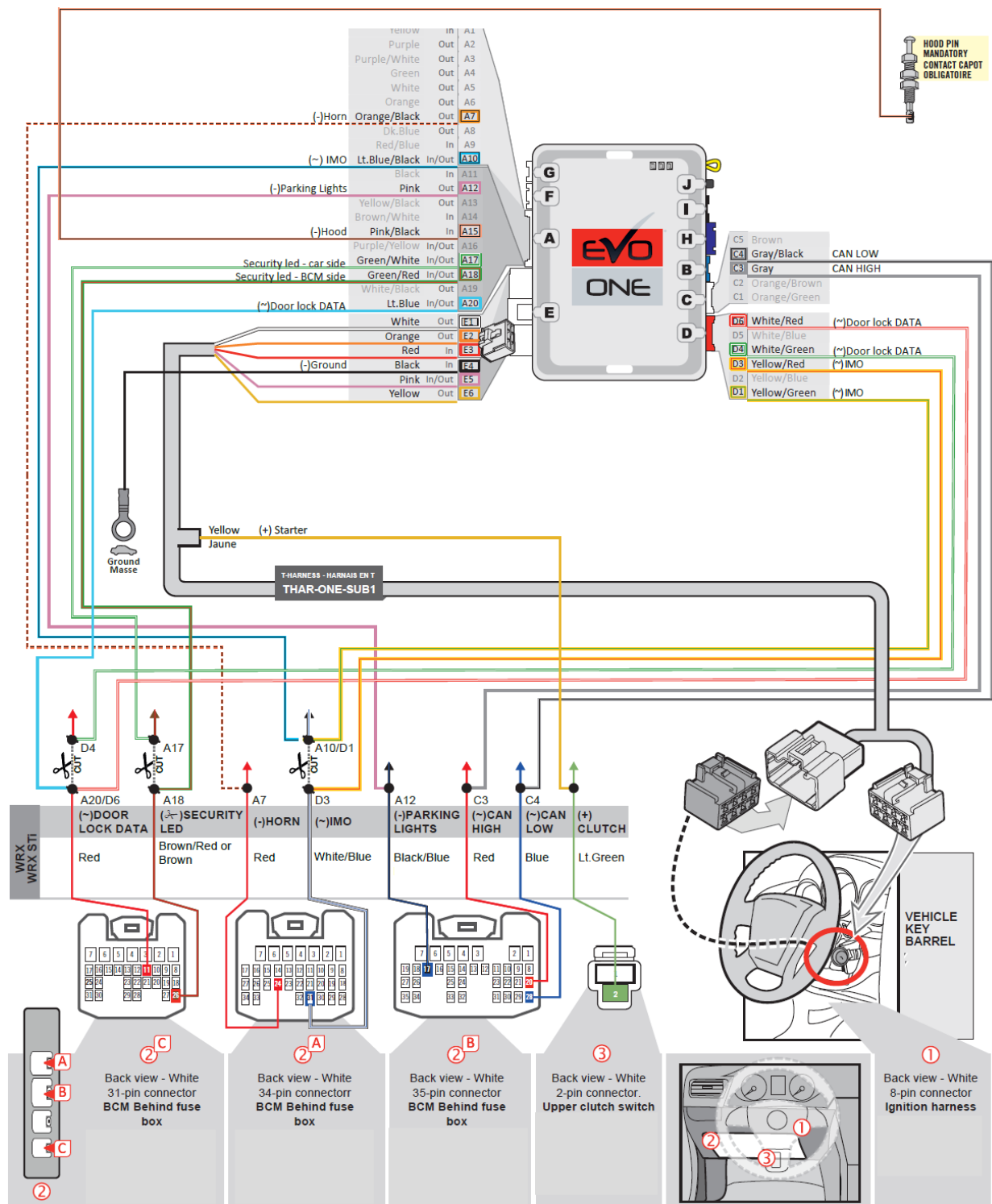
THAR-ONE-SUB1

AUTOMATIC TRANSMISSION CONNECTION





THAR-ONE-SUB1

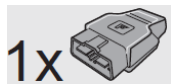
MANUAL TRANSMISSION CONNECTION



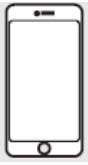
PROGRAMMING PROCEDURE

Parts required (not included)

- 1x  FLASH LINK UPDATER
- 1x  FLASH LINK MANAGER SOFTWARE | PROGRAMME
- 1x  Microsoft Windows Computer with Internet connection



1x FLASH LINK MOBILE



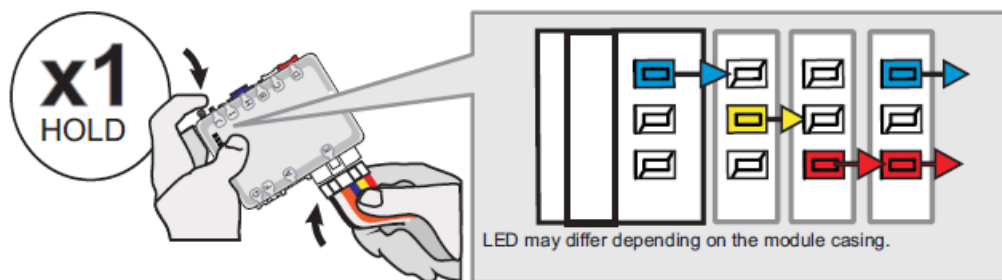
1x FLASH LINK MOBILE APP

Smartphone Android or iOS with Internet connection
(Internet provider charges may apply)



1x

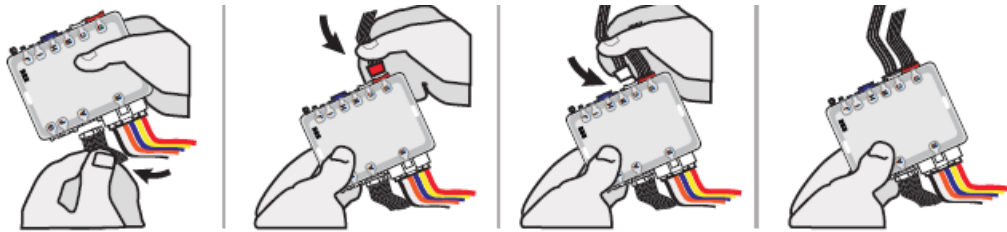
BEFORE PROGRAMMING SET THE UNIT OPTIONS AND SAVE.



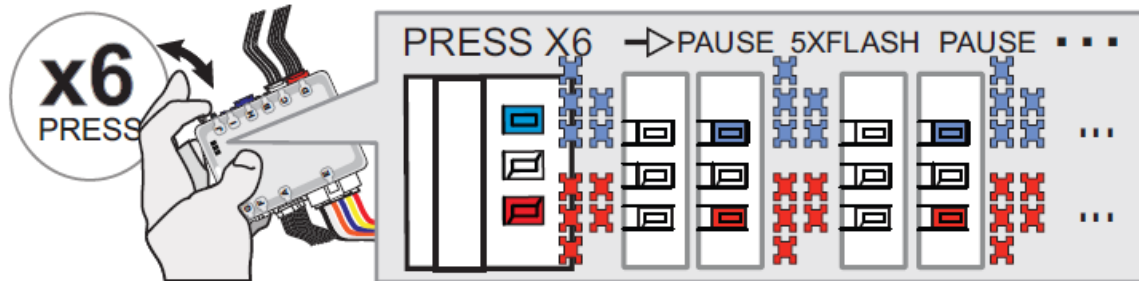
2



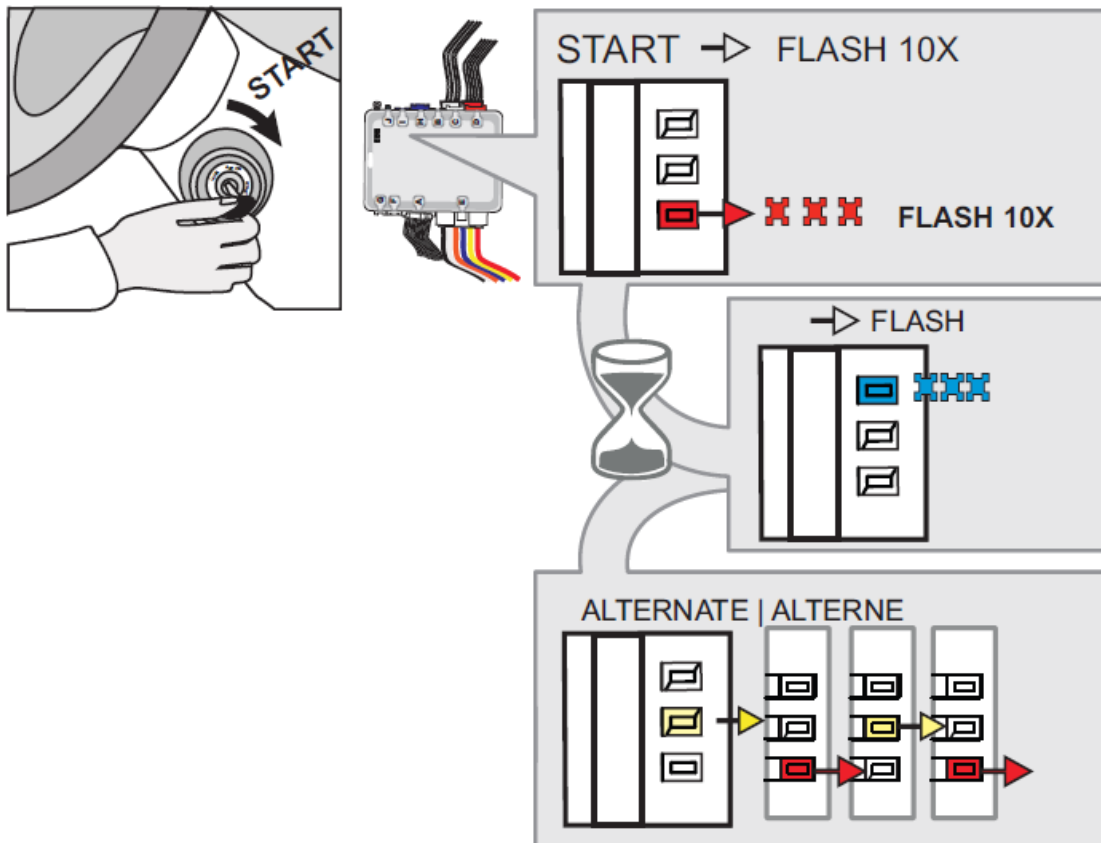
1. Press and hold the programming button: Connect the 6-PIN Main harness (White connector).
The Blue, Red, Yellow and Blue & Red LEDs will alternatively illuminate.
2. Release the programming button when the LED's are BLUE & RED.
If the LED's are not solid BLUE and RED disconnect the 6-Pin connector (Main-Harness) and go back to step 1.



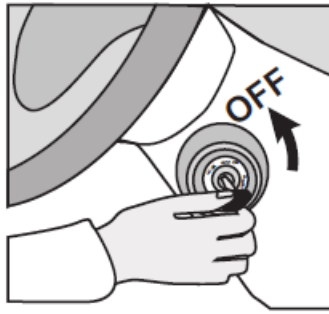
4



3. Insert the required remaining connectors.
4. Press and release the programming button six time (6x).
The RED and BLUE LED will flash 5 times each second.



5. Start the engine.
The RED LED will flash rapidly 10x times.
Key bypass programmed.
Wait for the BLUE LED will flash rapidly.
Wait for the YELLOW and RED LED will alternate.

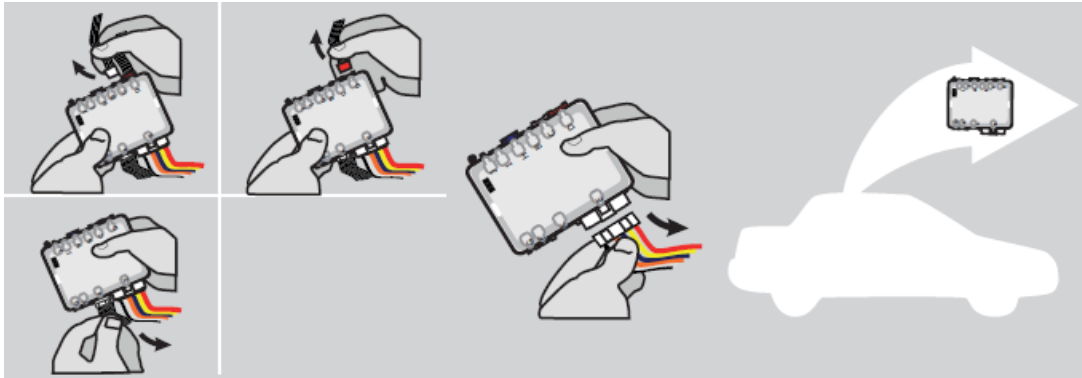


6. Stop the engine:

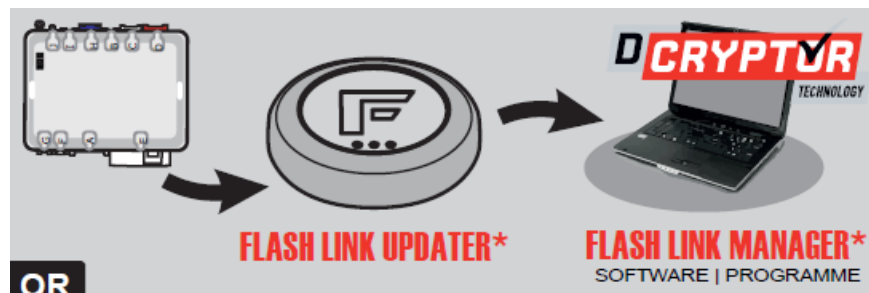
Turn the key to the OFF position.

KEY BYPASS PROGRAMMING

7.



Disconnect all connectors and after the 6-Pin (Main-Harness) or the 4-Pin Data-link connector.

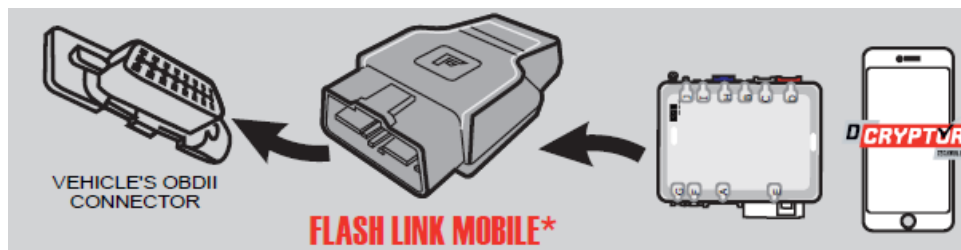


Microsoft Windows Computer with Internet connection*

8. Use the tool:

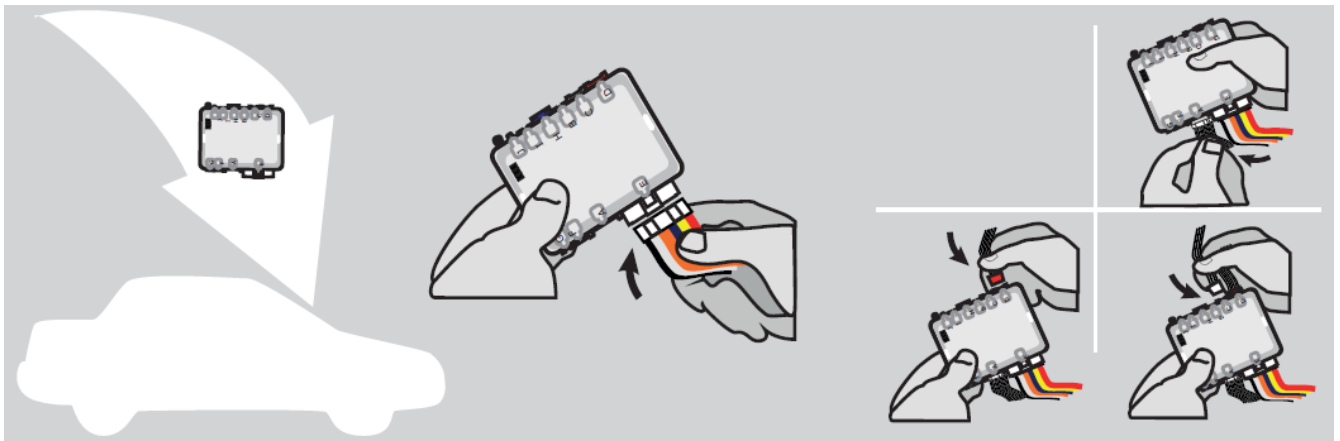
FLASH LINK UPDATER or FLASH LINK MOBILE to visit the DCryptor menu.

*Parts required (not included)



Smartphone*

(Internet provider charges may apply)



9. AFTER DCRYPTOR PROGRAMMING COMPLETED Go back to the vehicle and reconnect the 6-Pin (Main-Harness) or the 4-pins (Data-Link) connector and after all the remaining connector.

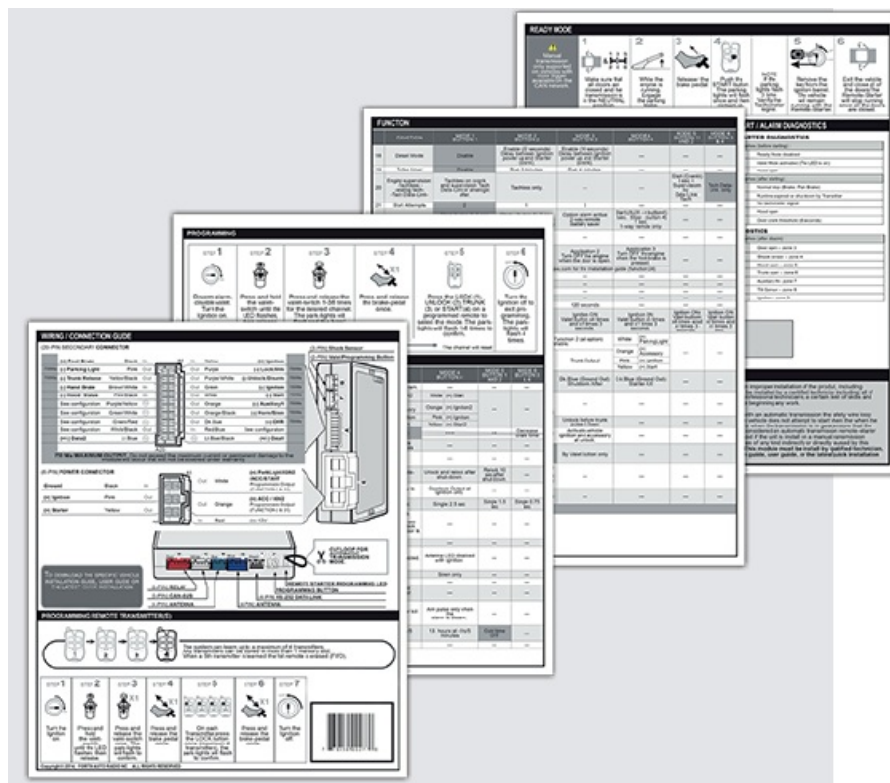
The module is now programmed.

REMOTE STARTER

Test the remote starter. Remote start the vehicle.

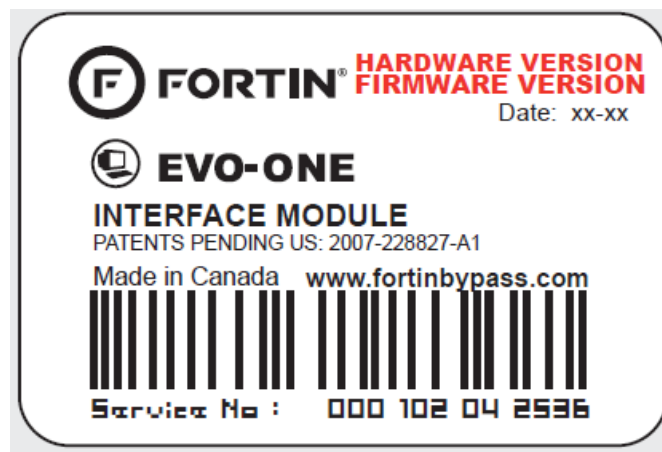
REMOTE STARTER PROGRAMMING PROCEDURE

REFER TO THE QUICK INSTALL GUIDE INCLUDED WITH THE MODULE FOR THE REMOTE STARTER PROGRAMMING.



VEHICLE EQUIPPED WITH OEM ALARM

Some vehicles must be UNLOCKED to disarm the OEM alarm before remote start. Enable option D2 using the FlashLink Manager. When this option is enabled the module will automatically UNLOCK before remote start and LOCK after the vehicle has remote started.



Module label

Notice: Updated Firmware and Installation Guides Updated firmware and installation guides are posted on our web site on a regular basis. We recommend that you update this module to the latest firmware and download the latest installation guide(s) prior to the installation of this product.

WARNING

The information on this sheet is provided on an (as is) basis with no representation or warranty of accuracy whatsoever. It is the sole responsibility of the installer to check and verify any circuit before connecting to it. Only a computer safe logic probe or digital multimeter should be used. FORTIN ELECTRONIC SYSTEMS assumes absolutely no liability or responsibility whatsoever pertaining to the accuracy or currency of the information supplied. The installation in every case is the sole responsibility of the installer performing the work and FORTIN ELECTRONIC SYSTEMS assumes no liability or responsibility whatsoever resulting from any type of installation, whether performed properly, improperly or any other way. Neither the manufacturer or distributor of this module is responsible of damages of any kind indirectly or directly caused by this module, except for the replacement of this module in case of manufacturing defects. This module must be installed by qualified technician. The information supplied is a guide only. This instruction guide may change without notice. Visit www.fortinbypass.com to get the latest version.

Copyright © 2006-2018, FORTIN AUTO RADIO INC ALL RIGHTS RESERVED PATENT PENDING

TECH SUPPORT

Tél: 514-255-HELP (4357)

1-[877-336-7797](tel:877-336-7797)

www.fortinbypass.com

FAQ

- **Q: What should I do if I need to update the firmware version?**

A: Use the FLASH LINK UPDATER or FLASH LINK MOBILE tool, sold separately, to add the new firmware version and options.

- **Q: Are the parts required for installation included in the package?**

A: No, the parts required for installation such as fuses and diodes are not included and need to be purchased separately.

Documents / Resources



[FORTIN SUB1-WRX Immobilizer Bypass Module](#) [pdf] Owner's Manual
SUB1-WRX, SUB1-STi, 2015-2021, SUB1-WRX Immobilizer Bypass Module, SUB1-WRX, Immobilizer Bypass Module, Bypass Module, Module

References

- [Home | Marcelino d.o.o.](#)
- [User Manual](#)

[Manuals+](#), [Privacy Policy](#)

This website is an independent publication and is neither affiliated with nor endorsed by any of the trademark owners. The "Bluetooth®" word mark and logos are registered trademarks owned by Bluetooth SIG, Inc. The "Wi-Fi®" word mark and logos are registered trademarks owned by the Wi-Fi Alliance. Any use of these marks on this website does not imply any affiliation with or endorsement.