



FORTIN
Immobilizer
Bypass Module



FORTIN Immobilizer Bypass Module Installation Guide

[Home](#) » [FORTIN](#) » FORTIN Immobilizer Bypass Module Installation Guide 

Contents

- [1 FORTIN Immobilizer Bypass Module](#)
- [2 Product Usage Instructions](#)
- [3 WIRING CONNECTION](#)
- [4 PROGRAMMING PROCEDURE](#)
- [5 Connector Information](#)
- [6 FAQ](#)
- [7 Documents / Resources](#)
 - [7.1 References](#)
- [8 Related Posts](#)



FORTIN Immobilizer Bypass Module



Specifications

- Vehicle Compatibility: Toyota 4Runner Key 2003-2007
- Firmware Version: 79.[65]

Product Usage Instructions

Vehicle functions supported in this diagram (functional if equipped)

| VEHICLE | | YEARS | Immobiliz er bypass | Lock | Unl ock | Ar m | Dis arm | Par king Lig hts | Hoo d St atus * | Foot- Brake Statu s |
|---------|-----|---------------|---------------------------|------|------------|---------|------------|---------------------------|--------------------------|------------------------------|
| | | | | | | | | | | |
| TOYOTA | | | | | | | | | | |
| 4Runner | Key | 2003-20 07 | . | . | . | . | . | . | . | . |



FIRMWARE VERSION
VERSION LOGICIELLE

79.[65]

MINIMUM

To add the firmware version and the options, use the FLASH LINK UPDATER or FLASH LINK MOBILE tool, sold separately.

MANDATORY INSTALL

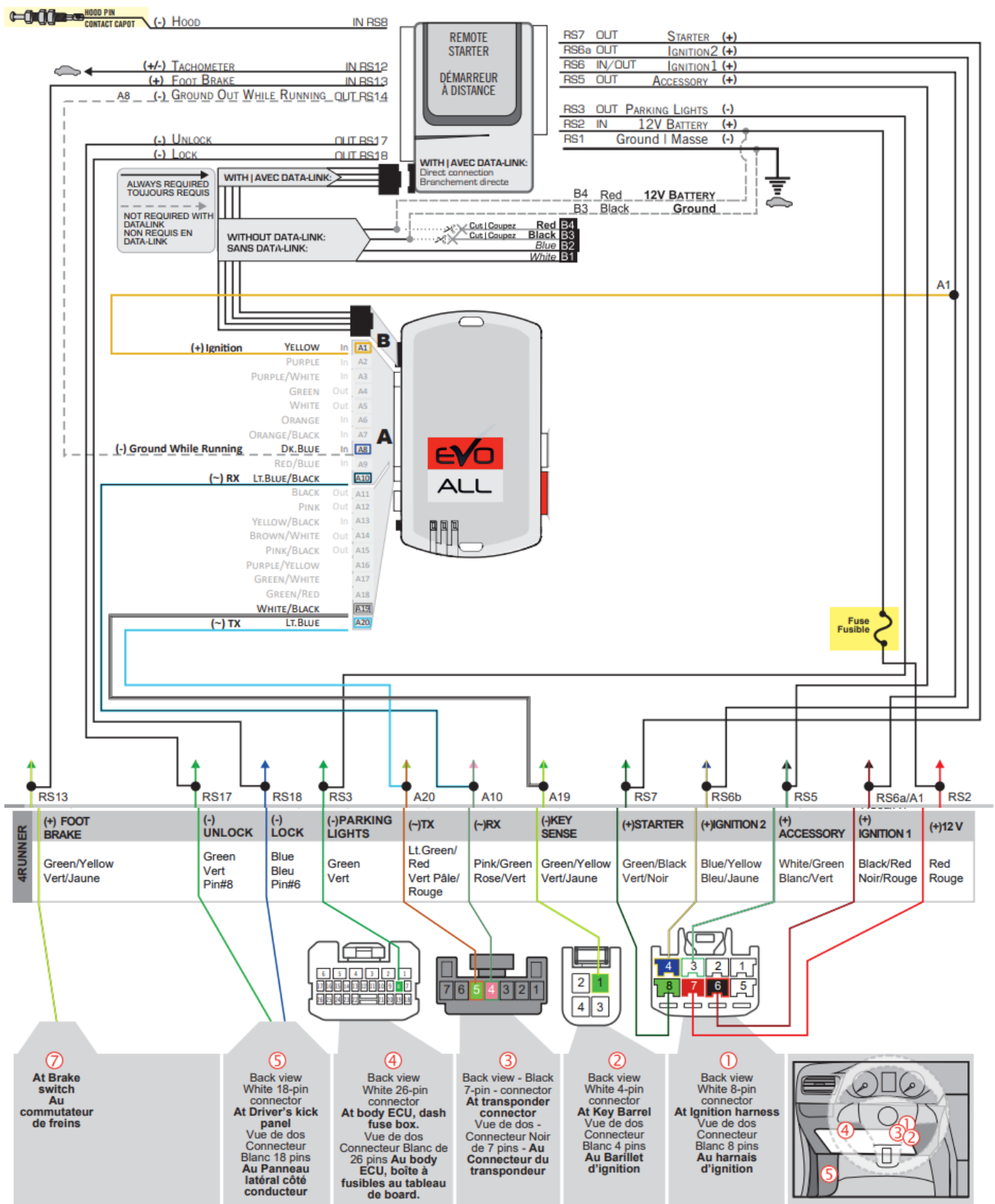
* HOOD PIN

HOOD STATUS : THE HOOD PIN SWITCH MUST BE INSTALLED
IF THE VEHICLE CAN BE REMOTE STARTED WITH THE HOOD OPEN.



Notice: the installation of safety elements are mandatory. The hood pin is an essential security element and must be installed.

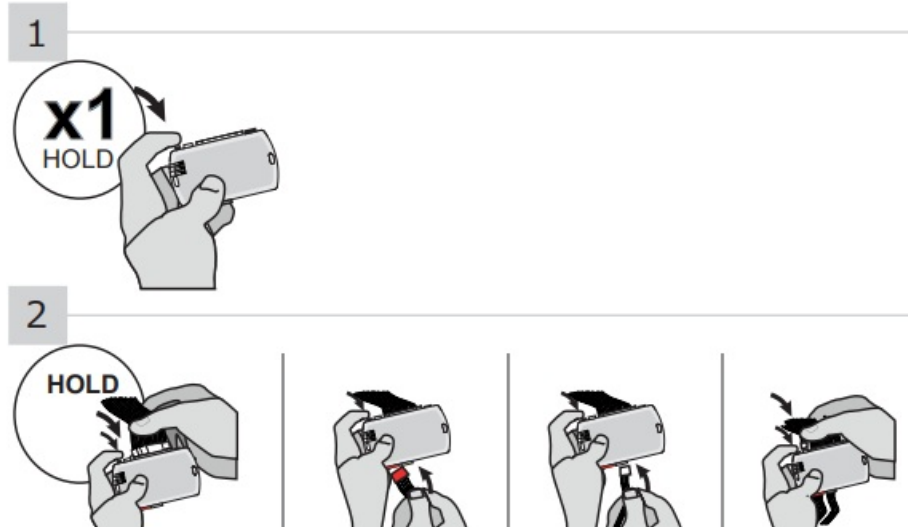
WIRING CONNECTION



PROGRAMMING PROCEDURE

1. Press and hold the programming button.
2. Insert the connectors:
 - 20 pin (White),
 - 6 pin (Red),

- 5 pin (White),
- 2 pin (White).
- (If required)

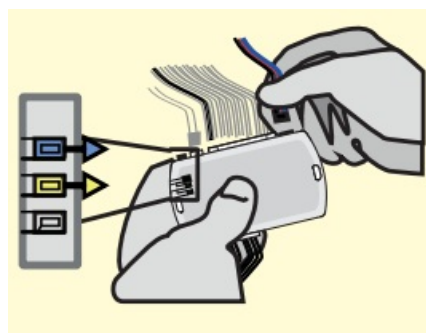
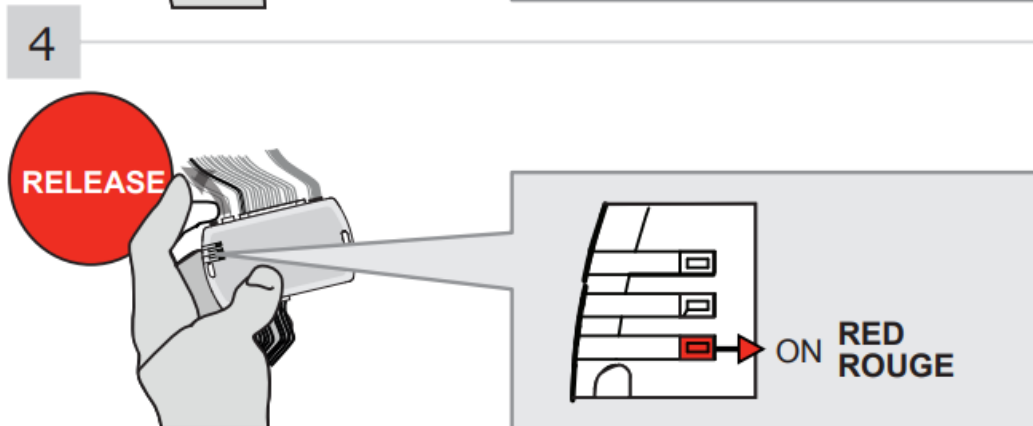
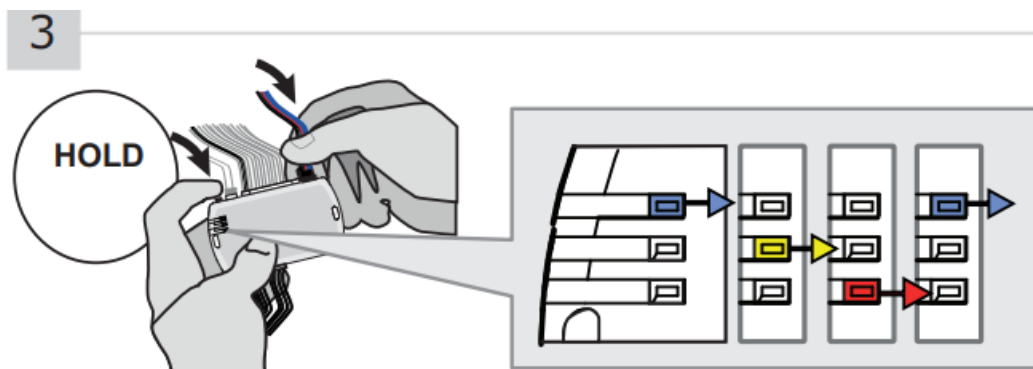


3. Insert the 4-Pin (Data-Link) connector.

The LEDs will alternate between BLUE, YELLOW and RED flashes.

4. Release the programming button when the LED is RED.

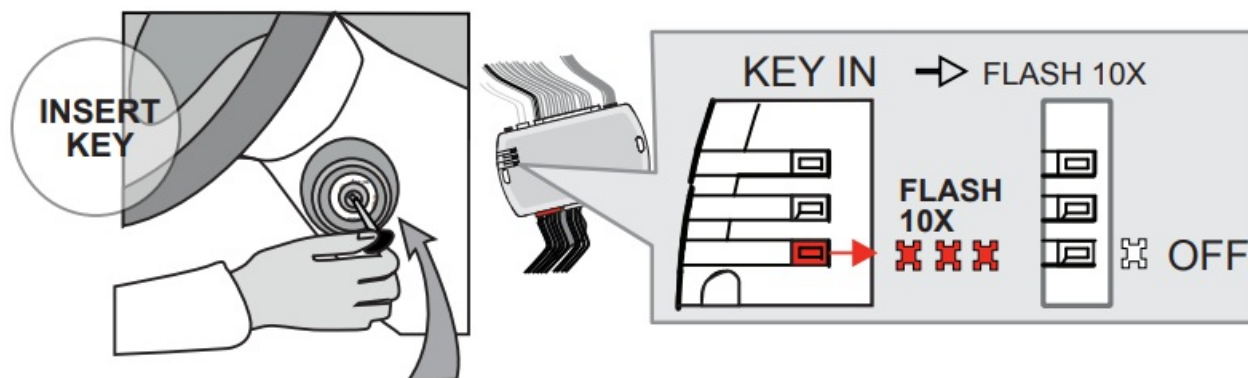
If the LED is not solid RED disconnect the 4 Pin connector (Data-Link) and go back to step 1.



5. Insert one functional key into the ignition barrel.

DO NOT turn ON the key.

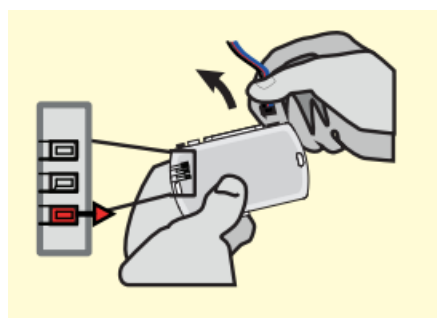
5



The RED LED will flash rapidly 10x times.

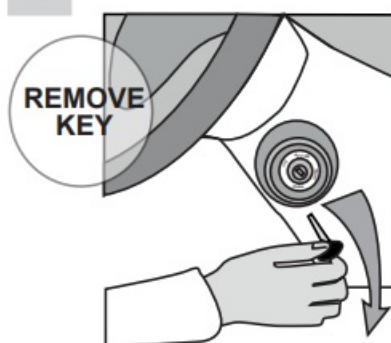
Key bypass programmed.

If the LED is solid RED disconnect the 4 Pin connector (Data-Link) and go back to step 1.



6. Remove the key from the Ignition barrel.

6



The module is now programmed.

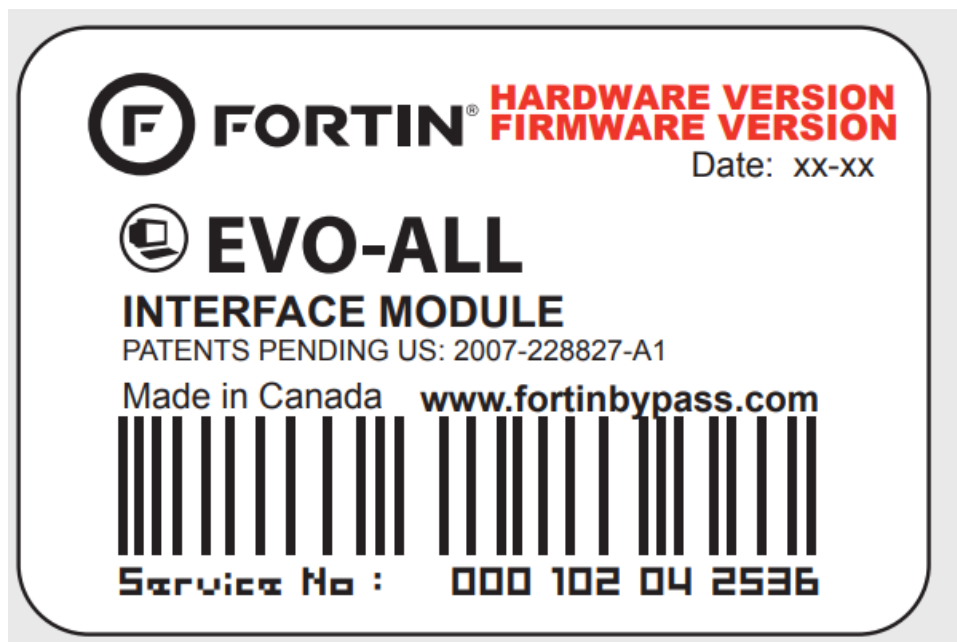
Use the remote of the remote starter or security system to test all of the supported features to ensure proper programming.

Notice: Updated Firmware and Installation Guides

Updated firmware and installation guides are posted on our web site on a regular basis. We recommend that you update this module to the latest firmware and download the latest installation guide(s) prior to the installation of this product.

Made in Canada

www.fortinbypass.com



WARNING

The information on this sheet is provided on an (as is) basis with no representation or warranty of accuracy whatsoever. It is the sole responsibility of the installer to check and verify any circuit before connecting to it. Only a computer safe logic probe or digital multimeter should be used. FORTIN ELECTRONIC SYSTEMS assumes absolutely no liability or responsibility whatsoever pertaining to the accuracy or currency of the information supplied. The installation in every case is the sole responsibility of the installer performing the work and FORTIN ELECTRONIC SYSTEMS assumes no liability or responsibility whatsoever resulting from any type of installation, whether performed properly, improperly or any other way. Neither the manufacturer or distributor of this module is responsible of damages of any kind indirectly or directly caused by this module, except for the replacement of this module in case of manufacturing defects. This module must be installed by qualified technician. The information supplied is a guide only. This instruction guide may change without notice. Visit www.fortinbypass.com to get the latest version.

Mandatory Installation

For proper installation, the hood pin switch must be installed if the vehicle can be remote started with the hood open. It is essential for security purposes and must be installed by a qualified technician to avoid any damage to the vehicle.

Wiring Connections

Follow the wiring connections guide provided:

- HOOD PIN: Connect to RS8 (-) Hood and RS12 (+/-) Tachometer
- FOOT BRAKE: Connect to RS13 (+) Foot Brake
- GROUND: Connect to RS14 A8 (-) Ground Out While Running
- REMOTE STARTER: Connect Unlock and Lock to RS17 and RS18 respectively
- With Data-Link: Direct connection is required for proper functionality

Connector Information

- White 18-pin connector: At Driver's kick
- Black 7-pin connector: At transponder connector
- White 4-pin connector: At Key Barrel
- White 8-pin connector: At Ignition harness

TECH SUPPORT

- Tél: 514-255-HELP (4357)
- 1-[877-336-7797](tel:18773367797)
- ADDENDUM GUIDE
- www.fortinbypass.com
- WEB UPDATE

FAQ

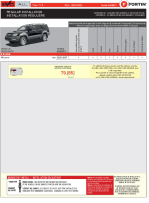
- **Q: Is the installation of the hood pin switch mandatory?**

A: Yes, for vehicles that can be remote started with the hood open, the installation of the hood pin switch is mandatory for security reasons.

- **Q: Can I install the module myself?**

A: It is recommended to have the module installed by a qualified technician to avoid any wrong connections that can cause damage to the vehicle.

Documents / Resources

| | |
|--|---|
|  | FORTIN Immobilizer Bypass Module [pdf] Installation Guide Immobilizer Bypass Module, Bypass Module, Module |
|--|---|

References

- [User Manual](#)

Manuals+, Privacy Policy

This website is an independent publication and is neither affiliated with nor endorsed by any of the trademark owners. The "Bluetooth®" word mark and logos are registered trademarks owned by Bluetooth SIG, Inc. The "Wi-Fi®" word mark and logos are registered trademarks owned by the Wi-Fi Alliance. Any use of these marks on this website does not imply any affiliation with or endorsement.