

**EVO ONE**  
**FORTIN**  
**Push to**  
**Start**  
**Bypass**  
**Module**



# FORTIN EVO-ONE Push to Start Bypass Module Installation Guide

[Home](#) » [FORTIN](#) » FORTIN EVO-ONE Push to Start Bypass Module Installation Guide 

## Contents

- [1 FORTIN EVO-ONE Push to Start Bypass Module](#)
- [2 Specifications](#)
- [3 Product Usage Instructions](#)
- [4 Vehicle functions](#)
- [5 MANDATORY INSTALL](#)
- [6 DESCRIPTION](#)
- [7 AUTOMATIC TRANSMISSION WIRING CONNECTION](#)
- [8 DCRYPTOR PROGRAMMING PROCEDURE](#)
- [9 REMOTE STARTER FUNCTIONALITY](#)
- [10 WARNING](#)
- [11 MORE INFO](#)
- [12 FAQs](#)
- [13 Documents / Resources](#)
  - [13.1 References](#)



**FORTIN EVO-ONE Push to Start Bypass Module**



## Specifications

- Vehicle Compatibility: Subaru Crosstrek Impreza
- Start System: Push-to-Start
- Model Years: 2018-2023 (Push-to-Start), 2017-2022 (Push-to-Start)
- Firmware Version: 84.[11]
- Unit Option: C1

## Product Usage Instructions

### Description

The product is designed to enhance the security and convenience of starting your vehicle remotely using the push-to-start system.

### Installation Requirements

It is mandatory to install the hood pin switch for safety and security reasons. The hood pin ensures that the vehicle

cannot be remote started with the hood open.

### Mandatory Steps:

1. Ensure the hood pin switch is installed correctly.
2. If the vehicle can be remotely started with the hood open, set function A11 to OFF.
3. Always have the module installed by a qualified technician to avoid damage to the vehicle.


### Connection Instructions

Refer to the provided diagram and connect the necessary wires according to the color codes and pin configurations specified in the manual.



### Operation

Once properly installed, you can remotely start your vehicle by following the manufacturer's instructions for using the push-to-start system.

### Vehicle functions

			Vehicle functions supported in this diagram (functional if equipped)   Fonctions du véhicule supportées dans ce diagramme (fonctionnelles si équipé)														
VEHICLE VEHICULES		YEARS ANNÉES	Immobilizer bypass Contournement d'immobilisateur	Lock	Unlock	Arm	Disarm	Trunk (open)	Parking Lights	RAP Disable	Tachometer	Door Status	Trunk Status	Hand-Brake Status	Foot-Brake Status	Secure Take Over Prise en charge sécurisée	OEM Remote monitoring**
																	
SUBARU																	
Crosstrek	Push-to-Start	2018-2023	•	•	•	•	•	•	•	•	•	•	•	•	•	•	•
Impreza	Push-to-Start	2017-2022	•	•	•	•	•	•	•	•	•	•	•	•	•	•	•

### Program bypass option:

		FIRMWARE VERSION VERSION LOGICIELLE  <b>84.[11]</b>  MINIMUM		To add the firmware version and the options, use the <b>FLASH LINK UPDATER</b> or <b>FLASH LINK MOBILE</b> tool, sold separately. Pour ajouter la version logicielle et les options, utilisez l'outil <b>FLASH LINK UPDATER</b> ou <b>FLASH LINK MOBILE</b> , vendu séparément.	
	Program bypass option: Programmez l'option du contournement:			UNIT OPTION OPTION UNITÉ	DESCRIPTION
				<b>C1</b>	OEM Remote status (Lock/Unlock) monitoring Suivi des status (Verrouillage/Déverrouillage) de la télécommande d'origine
	<b>D6</b>	Push-to-Start Push-to-Start			
		IF THE VEHICLE IS NOT EQUIPPED WITH FUNCTIONAL HOOD PIN: SI LE VÉHICULE N'EST PAS ÉQUIPÉ D'UN CONTACT DE CAPOT FONCTIONNEL:			<b>A11</b>
<b>D2</b>	Unlock before / Lock after (Disarm OEM alarm) Déverrouille avant / Verrouille après (Désarme l'alarme d'origine)				

**NOTES** The vehicles OEM remote will remain functional when the vehicle is running, however, the intelligent access key will not unlock the doors when the vehicle is running

## MANDATORY INSTALL

\* HOOD PIN



**HOOD STATUS:** THE HOOD PIN SWITCH MUST BE INSTALLED IF THE VEHICLE CAN BE REMOTE STARTED WITH THE HOOD OPEN, SET FUNCTION **A11** TO OFF.

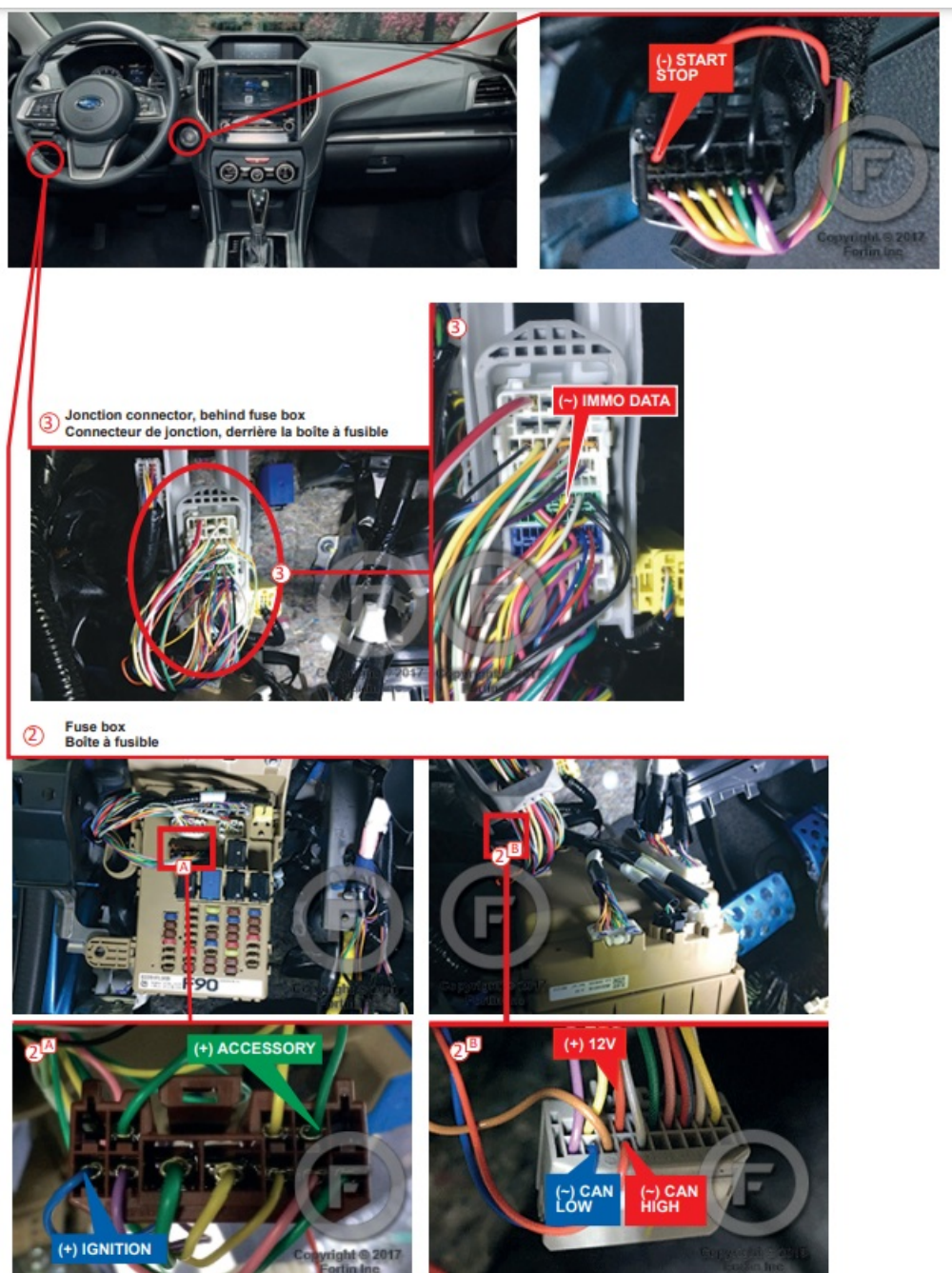
**A11**

OFF  
NON

CONTACT  
DE CAPOT

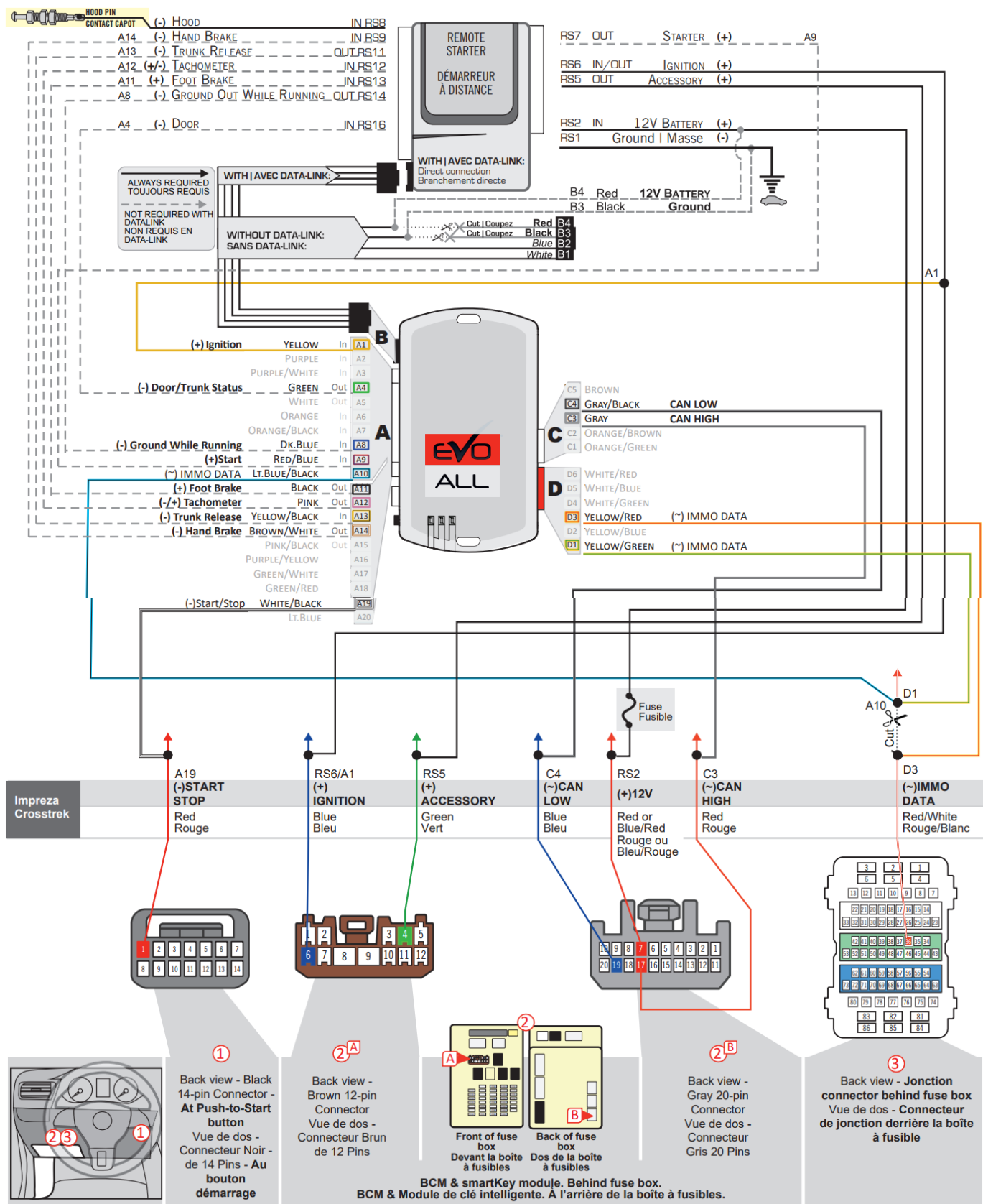
**STATUT DE CAPOT:** LE CONTACT DE CAPOT, DOIT ÊTRE INSTALLÉ SI LE VÉHICULE PEUT DÉMARRER À DISTANCE, LORSQUE LE CAPOT EST OUVERT, PROGRAMMEZ LA FONCTION **A11** À NON.

## DESCRIPTION



## AUTOMATIC TRANSMISSION WIRING CONNECTION

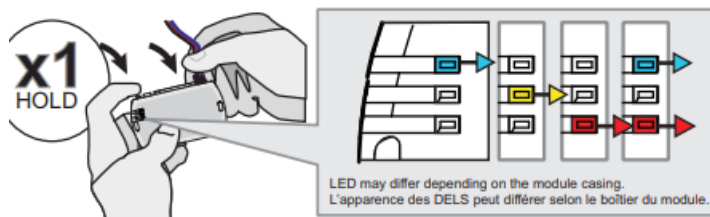




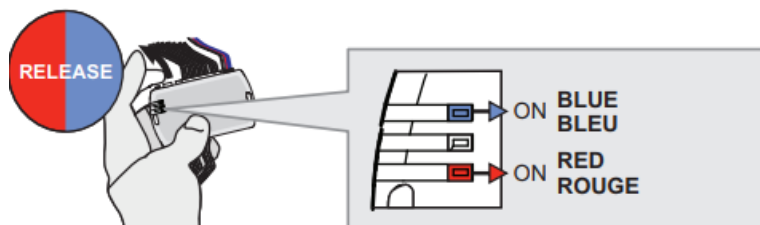
- 1x  **FLASH LINK UPDATER,**
- 1x  **FLASH LINK MANAGER**
- SOFTWARE | PROGRAMME
- 1x  Microsoft Windows Computer with Internet connection  
Ordinateur Microsoft Windows avec connection Internet

## BEFORE PROGRAMMING SET THE UNIT OPTIONS AND SAVE

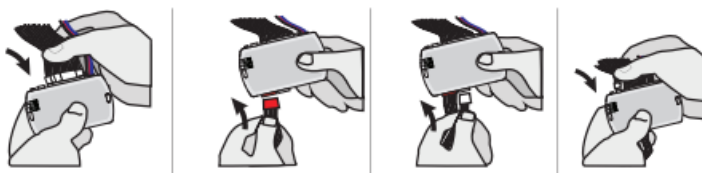
1



2

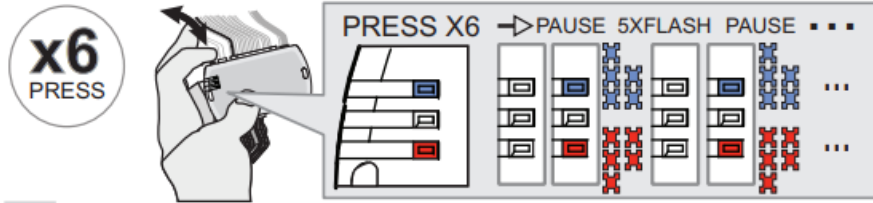


3

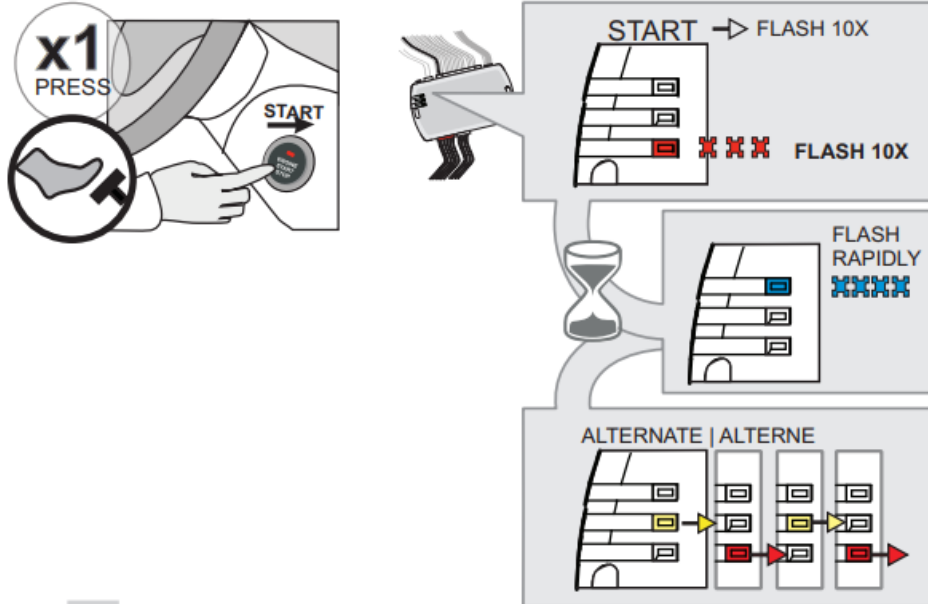


1. Press and hold the programming button: Connect the 4-PIN Data-link harness (Black connector).
  - The Blue, Red, Yellow and blue-red LEDs will alternatively illuminate
2. Release the programming button when the LED are BLUE & RED.
  - If the LED is not solid BLUE and RED disconnect the 4- Pin connector (Data-Link) and go back to step 1
3. Insert the required remaining connectors

4



5

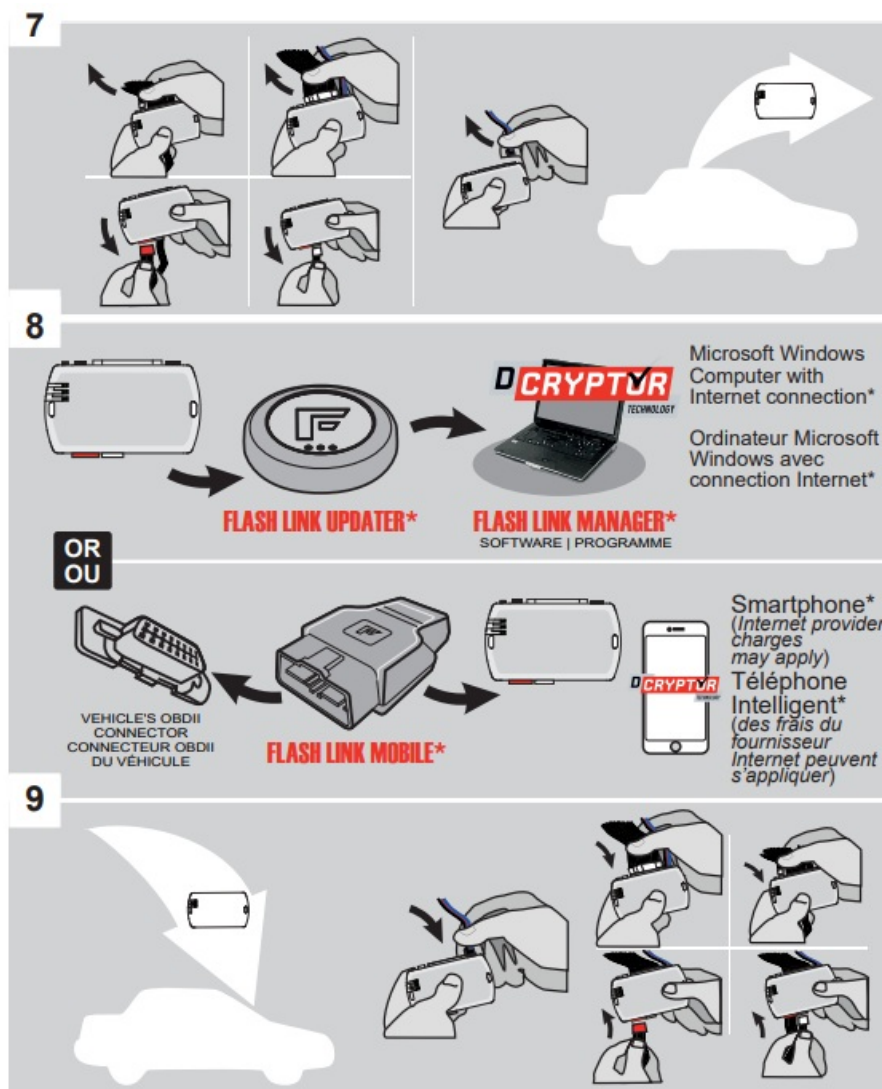


6



4. Press and release the programming button six time (6x).
  - The RED and BLUE LED will flash 5 times each second.
5. Start the engine :
  - Press the brake pedal.
  - Press the Push-to-Start button to start the engine.
  - The RED LED will flash rapidly 10x times. Key bypass programmed
  - Wait for the BLUE LED will flash rapidly
  - Wait for the BLUE LED will flash rapidly.
6. Stop the engine: Press the Push-to-Start button once to turn off the ignition.





7. Disconnect all the connectors and after the Data-Link (4-pins) connector
8. Use the tool: FLASH LINK UPDATER or FLASH LINK MOBILE to visit the DCryptor menu \*Parts required (not included)
9. AFTER DCRYPTOR PROGRAMMING COMPLETED Go back to the vehicle and reconnect the 4-Pin (Data-Link) connector and after, all the remaining connector

## REMOTE STARTER FUNCTIONALITY

<p><b>Start</b></p> <p>All doors must be closed. Remote start the vehicle.</p> <p>Toutes les portes doivent être fermées Démarrez à distance.</p>	<p><b>UNLOCK</b></p> <p>Unlock the doors with either: The OEM remote Or The remote-starter</p> <p>Déverrouillez les portes avec soit: la télécommande d'origine ou la télécommande du démarreur à distance</p>	<p><b>x1 PRESS</b></p> <p>Enter the vehicle with the SMART-KEY.</p> <p>Entrez dans le véhicule avec la clé intelligente (SMART-Key) sur vous</p>	<p><b>ON</b></p> <p>DO NOT PRESS THE BRAKE PEDAL. Press and release the Push-to-Start button once.</p> <p>NE PAS APPUYER LA PÉDALE DE FREIN. Appuyez et relâchez une fois le bouton démarrage (Push-to-Start).</p>	<p><b>FLASH x1</b></p> <p>Wait for the orange led on the Push-to-Start button to flash once.</p> <p>Attendez que la DEL orange du bouton démarrage s'allume et s'éteigne.</p>	<p>Press the brake pedal. The vehicle can now be put in to gear and driven. If the Smart-Key is not detected the vehicle will shut down.</p> <p>Appuyez sur la pédale de frein. Vous êtes maintenant prêt à embrayer et prendre la route. Si la clé intelligente n'est pas détectée le véhicule s'éteindra.</p>
---	--	--	--	---	---

Updated firmware and installation guides are posted on our website on a regular basis. We recommend that you update this module to the latest firmware and download the latest installation guide(s) before the installation of this product



## WARNING

The information on this sheet is provided on an (as is) basis with no representation or warranty of accuracy whatsoever. It is the sole responsibility of the installer to check and verify any circuit before connecting to it. Only a computer-safe logic probe or digital multimeter should be used. FORTIN ELECTRONIC SYSTEMS assumes absolutely no liability or responsibility whatsoever about the accuracy or currency of the information supplied. The installation in every case is the sole responsibility of the installer performing the work and FORTIN ELECTRONIC SYSTEMS assumes no liability or responsibility whatsoever resulting from any type of installation, whether performed properly, improperly, or in any other way. Neither the manufacturer or distributor of this module is responsible for damages of any kind indirectly or directly caused by this module, except for the replacement of this module in case of manufacturing defects. This module must be installed by qualified technician. The information supplied is a guide only. This instruction guide may change without notice. Visit [www.fortinbypass.com](http://www.fortinbypass.com) to get the latest version.

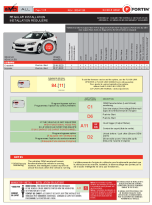
## MORE INFO

- Tél: 514-255-HELP (4357)
- 1-[877-336-7797](tel:877-336-7797)
- [www.fortinbypass.com](http://www.fortinbypass.com)

## FAQs

- **Q: Is it necessary to install the hood pin switch?**
  - **A:** Yes, the installation of the hood pin switch is mandatory for the proper functioning and security of the system. Failure to install it may result in unauthorized remote starts.
- **Q: Can I install the module myself?**
  - **A:** It is recommended to have the module installed by a qualified technician to ensure correct installation and prevent damage to the vehicle.
- **Q: What should I do if I encounter issues with the remote start function?**
  - **A:** If you experience any difficulties with the remote start function, refer to the troubleshooting section in the manual or contact customer support for assistance.

## Documents / Resources



**[FORTIN EVO-ONE Push to Start Bypass Module](#)** [pdf] Installation Guide  
2018-2023, 2017-2022, EVO-ONE Push to Start Bypass Module, EVO-ONE, Push to Start Bypass Module, Start Bypass Module, Bypass Module, Module

## References

- [🌐 Home | Marcelino d.o.o.](#)
- [User Manual](#)

[Manuals+](#), [Privacy Policy](#)

This website is an independent publication and is neither affiliated with nor endorsed by any of the trademark owners. The "Bluetooth®" word mark and logos are registered trademarks owned by Bluetooth SIG, Inc. The "Wi-Fi®" word mark and logos are registered trademarks owned by the Wi-Fi Alliance. Any use of these marks on this website does not imply any affiliation with or endorsement.