



FORTIN EVO-ONE All-In-One Data Interface Remote Starter/Alarm Installation Guide

[Home](#) » [FORTIN](#) » FORTIN EVO-ONE All-In-One Data Interface Remote Starter/Alarm Installation Guide 

Contents

- [1 FORTIN EVO-ONE All-In-One Data Interface Remote Starter/Alarm Installation](#)
- [2 WIRING / CONNECTION GUIDE](#)
- [3 PROGRAMMING REMOTE TRANSMITTER\(S\)](#)
- [4 FUNCTION PROGRAMMING](#)
- [5 FUNCTION](#)
- [6 MANUAL TRANSMISSION SEQUENCE FOR COMPATIBLE VEHICLES ONLY](#)
- [7 DISARM / ENTER / EXIT VALET MODE](#)
- [8 REMOTE START DIAGNOSTICS](#)
- [9 ALARM DIAGNOSTICS](#)
- [10 WARNING](#)
- [11 Documents / Resources](#)
 - [11.1 References](#)
- [12 Related Posts](#)



FORTIN EVO-ONE All-In-One Data Interface Remote Starter/Alarm Installation



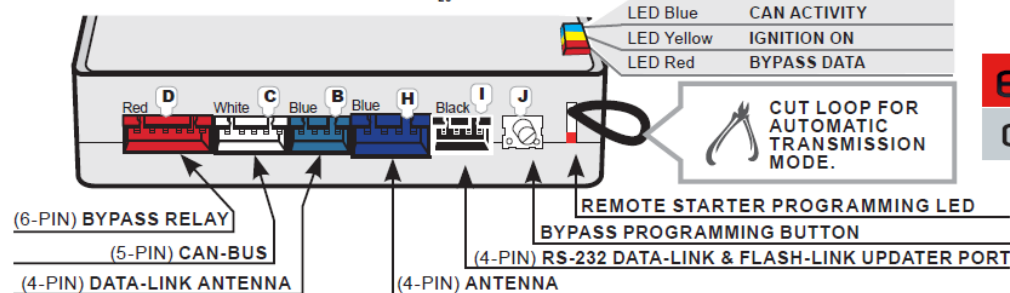
WIRING / CONNECTION GUIDE

(20-PIN) SECONDARY CONNECTOR

	(+) Foot Brake	Black	IN			IN	Yellow	(+) BYPASS IGNITION	
750mA	(-) Parking lights	Pink	OUT			OUT	Purple	(-) LOCK	750mA
750mA	(-) Trunk Release/AUX	Yellow/Black	OUT			OUT	Purple/White	(-) UNLOCK	750mA
	(-) Hand Brake	Brown/White	IN			OUT	Green	(-) IGNITION	750mA
	(-) Hood/Door	Pink/Black	IN			OUT	White	(-) START	750mA
	Bypass config.	Purple/Yellow	⊖			OUT	Orange	(-) DISARM	750mA
	Bypass config.	Green/White	⊖			OUT	Orange/Black	(-) HORN/SIREN	2 Amp
	Bypass config.	Green/Red	⊖			OUT	Dk.Blue	(-) GWR/PROGRAMMABLE	750mA
	Bypass config.	White/Black	OUT			IN	Red/Blue	BYPASS CONFIG.	
	Bypass config.	Lt.Blue	⊖			⊖	Lt.Blue/Black	BYPASS CONFIG.	
750 mA MAXIMUM OUTPUT. DO NOT EXCEED THE MAXIMUM CURRENT OR PERMANENT DAMAGE TO THE MODULE WILL OCCUR THAT WILL NOT BE COVERED UNDER WARRANTY.									

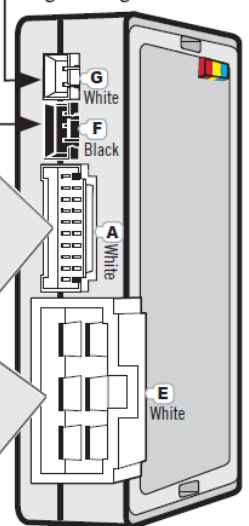
(6-PIN) POWER CONNECTOR

Ground	Black	IN		OUT	White	(+) PARKLIGHTS/IGN2/ACC/START PROGRAMMABLE OUTPUT (FUNCTION 2 & 31)
(+) Ignition	Pink	OUT		OUT	Orange	(+) ACC / IGN2 PROGRAMMABLE OUTPUT (FUNCTION 2 & 31)
(+) Starter	Yellow	OUT		IN	Red	(+) 12V



(3-PIN) SHOCK SENSOR

(2-PIN) Valet/ Programming Button

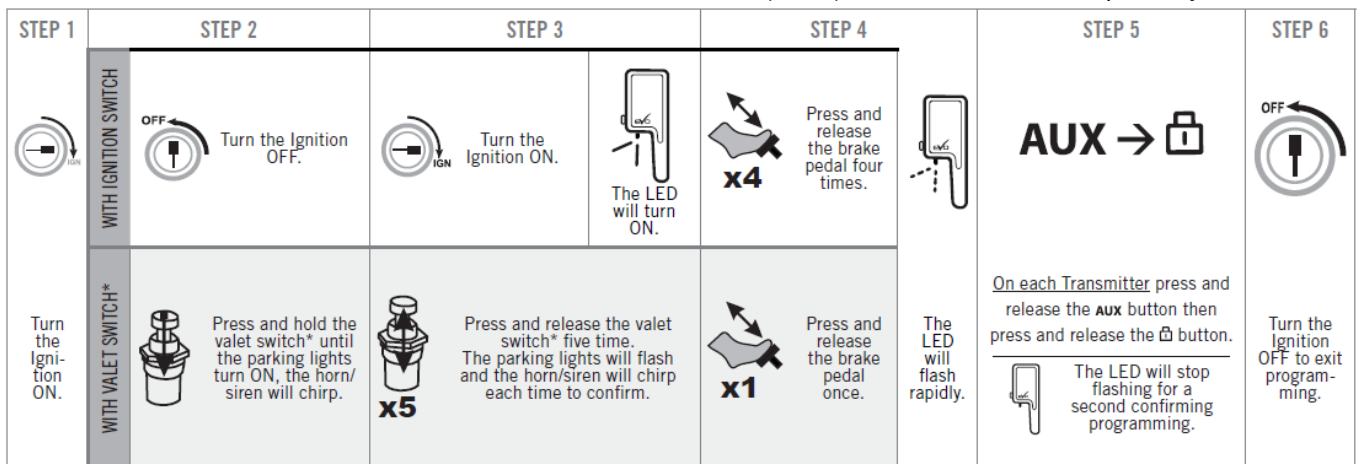


DOWNLOAD THE
SPECIFIC VEHICLE
INSTALLATION GUIDE AT:
WWW.FORTIN.CA

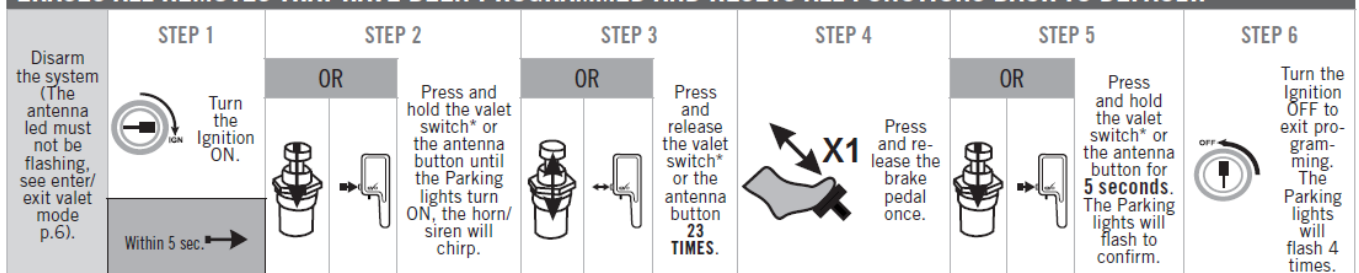
PAGE 1

PROGRAMMING REMOTE TRANSMITTER(S)

The system can learn up to a maximum of 4 transmitters. Any transmitters can be stored in more than 1 memory slot. When a 5th transmitter is learned the 1st remote is erased (FIFO). *Valet switch sold separately







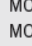
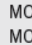
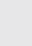
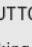



ERASES ALL REMOTES THAT HAVE BEEN PROGRAMMED AND RESETS ALL FUNCTIONS BACK TO DEFAULT.



FUNCTION PROGRAMMING

FUNCTION PROGRAMMING

	STEP 1	STEP 2	STEP 3	STEP 4	STEP 5	STEP 6
Disarm the system (The antenna led must not be flashing, see enter/exit valet mode p.6).	 Turn the Ignition ON. Within 5 sec.	 Press and hold the valet switch* or the antenna button until the Parking lights turn ON, the horn/siren will chirp. *Valet switch sold separately	 Press and release the valet switch or the antenna button X time for the desired function. The Parking lights will flash and the horn/siren will chirp each time to confirm.	 Press and release the brake-pedal once.	 MODE 1 -  LOCK MODE 2 -  UNLOCK MODE 3 -  START (3 SECONDS) MODE 4 - AUX (3 SECONDS) MODE 5 - AUX →  LOCK MODE 6 - AUX →  UNLOCK Press the BUTTON on a programmed remote to select the mode (X). The Parking lights will flash 1-6 times to confirm.	 Turn the Ignition OFF to exit programming. The Parking lights will flash 4 times.
					Return to step 3 to programmed the next option	

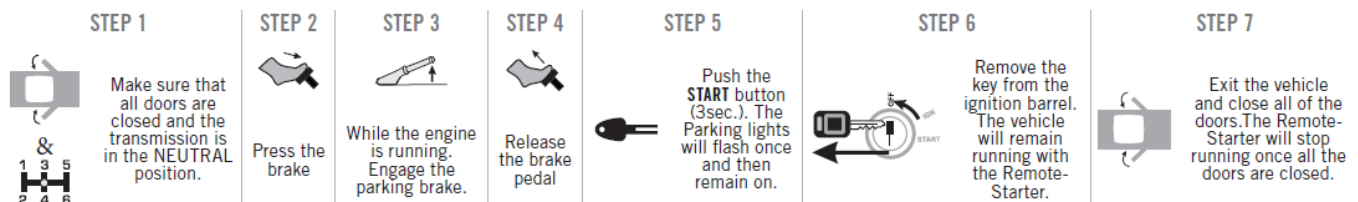
FUNCTION

	FUNCTION	MODE 1	MODE 2	MODE 3	MODE 4	MODE 5	MODE 6
1	—	—	—	—	—	—	—
2	Programmable Output (+) Ign/Acc/Start (FUNCTION 31 MODE 4)	White (+)Ignition2 Orange (+)Accessory Pink (+)Ignition Yellow (+)Start	White (+)Accessory2 Orange (+)Accessory Pink (+)Ignition Yellow (+)Start	White (+)Start2 Orange (+)Accessory Pink (+)Ignition Yellow (+)Start	White (+)Start Orange (+)Ignition2 Pink (+)Ignition Yellow (+)Start2	—	—
3	Tachless sensivity	Increase crank time ∞	+++++	++++ (By default)	+++	++	∞ Decrease crank time
4	Remote car starter runtime	Gas: 15 minutes Diesel: 30 minutes	Gas: 7 minutes Diesel: 14 minutes	Gas: 3 minutes Diesel: 6 minutes	—	—	—
5	Add Remote on FMH antenna series	Add Remote	—	—	—	—	—
6	Doorlock option	No	Unlock before remote-start & Lock after remote-start.	Lock after remote-start.	Unlock and relock after shut-down.	Relock 10 sec. after shut-down.	Disarm before shut down.
7	Ignition Doorlock option	No	Lock after foot-brake & unlock after key is turned OFF.	Unlock after key is turned OFF.	Doorlock Output at Ignition only.	—	—
8	Unlock Pulse Time	Single 0.25 sec	Double 0.25 sec	Single 4.0 sec	Single 2.5 sec	Single 1.5 sec	Single 0.75 sec
9	Active or Passive Alarm & Starter Kill.	Active Press LOCK to activate the Alarm and starter-kill.	Passive (Lock disabled) Arm alarm activate starter-kill 30(MODE 4), 60(MODE 5), or 120(MODE 6) sec. after the door is closed.	Passive (Lock enabled) Arm alarm, activate starter-kill and lock doors 30(MODE 4), 60(MODE 5), or 120(MODE 6) sec. after the door is closed.	Passive arm 30 seconds (by default if MODE 2 or 3 is activated).	Passive arm 60 seconds. (if MODE 2 or 3 is activated).	Passive arm 120 seconds. (if MODE 2 or 3 is activated).

	FUNCTION	MODE 1	MODE 2	MODE 3	MODE 4	MODE 5	MODE 6
10	Starter Kill Output. Required function 32 mode 4. - Dk.Blue (A8) = starter-kill.	Starter-kill & anti-grind	Anti-grind only	Relay normally open	—	—	—
11	Sound Confirmation & LED antenna Antidémarrage	1 st LOCK/UNLOCK silent 2 nd LOCK/UNLOCK sound Antenna LED active.	LOCK/UNLOCK sound always.	Antenna LED disabled.	Antenna LED disabled with ignition.	Confirmation sound at LOCK only	Panic mode disabled
12	Output horn/siren configuration	Horn(-) only.	Siren(+) Output (E1) white	Siren(+) Output (E1) white and Horn(-)	Siren(-) only (A7)	—	—
13	Confirmation Pulse	Long	Short	—	—	—	—
14	Alarm ON/OFF Starter ON/OFF	Alarm OFF Remote-starter ON	Alarm ON Remote-starter ON.	Alarm ON Remote-starter OFF	—	—	—
15	Smart Arming Smart Doorlock Smart Lock pulse	Disable	(Unlock signal) Automatically LOCK and rearm alarm if door(s) are not opened after 30 seconds.	Automatic Lock when starter kill arms.	Lock pulse only when its Unlock	—	—
16	Cold Start Timer	3 hours at -5°C/Runtime	1.5 hours at -5°C/Runtime	3 hours at -5°C/5 minutes	1.5 hours at -5°C/5 minutes	Cold time OFF	—
17	—	—	—	—	—	—	—
18	Diesel Mode	Disable	Enable (20 seconds) Delay between Ignition power up and Starter (crank).	Enable (10 seconds) Delay between Ignition power up and Starter (crank).	Enable (5 seconds) Delay between Ignition power up and Starter (crank).	—	—
19	Turbo timer	Disable	Run 2 minutes.	Run 4 minutes.	—	—	—
20	Engine supervision: -Tachless -analog tach- Tach Data-Link.	Tachless on crank and supervision Tach Data-Link.	Tachless only. (vehicles with automatic transmission only)	Start (Crank) 20 sec + Supervision by Data-Link Tach	Start (crank) 8 seconds on Tachless. (vehicles with automatic transmission only)	Start (Crank) 8 sec + Supervision by Data-Link Tach	Tach Data-Link only
21	Start Attempts	2	1	3	—	—	—
22	—	—	—	—	—	—	—
23	Master RESET	RESET all programming options by default. (Retains already programmed remote.)	—	—	—	—	—
24	—	—	—	—	—	—	—
25	Yellow/Black (A13) : Aux1 → LOCK	0.5 seconds & disarm alarm	0.5 seconds	10 sec latch or until a button is pressed.	20 sec latch or until a button is pressed.	30 sec latch or until a button is pressed.	Latch until shutdown
26	Hybrid mode	Gas / Diesel vehicle	Hybrid vehicle	—	—	—	—
27	—	—	—	—	—	—	—
28	—	—	—	—	—	—	—
29	Alarm Duration	30 seconds	60 seconds	120 seconds	—	—	—
30	Valet code	Ignition ON Valet button x3 times.	Ignition ON Valet button x3 times and x1 times 3 seconds.	Ignition ON Valet button x4 times and x1 times 3 seconds.	Ignition ON Valet button x5 times and x1 times 3 seconds.	Ignition ON Valet button x6 times and x1 times 3 seconds.	Ignition ON Valet button x7 times and x1 times 3 sec.

	FUNCTION	MODE 1	MODE 2	MODE 3	MODE 4	MODE 5	MODE 6		
31	Special application Programmable output (+)	No special application Priority on function 2	Special application - Function 2 (all option) not available.		White	(+) Parking Lights	White	(+) Parking Lights	White:(+) Parking- Lights
			White wire (E1) : Enable at ground out, disable with vehicle ignition OFF.	White wire (E1) : Trunk Output	Orange	(+) Accessory	Orange	Ign.2	Orange:(+) Parking lights
					Pink	(+) Ignition	Pink	Ign.1	Pink:(+) Ignition
					Yellow	(+) Start	Yellow	(+) Start	Yellow:(+) Start
32	Ground Out	Dk.Blue (Ground out): Shut-down 1 second after remote start run time.	Dk.Blue (Ground out): Shut-down 3 seconds after remote start run time.	Dk.Blue (Ground Out): Shutdown After	D.k Blue (Ground Out): Starter-Kill	D.k Blue (Ground Out): Arm / Rearm	Controlled by CAN learning		
33	Manual transmission function	Manual transmission completed by door closed.	Automatically activated by hand- brake and Foot Brake	Manual sequence completed by locking the doors	Cancel ready mode when trunk open.	—	—		
34	Trunk output	Pulse 0.5 seconds	Pulse 2.5 seconds	Unlock before trunk pulse 0.5sec	Trunk Output at ignition only	—	—		
35	Door unlock Special application	No special application	Activate vehicle ignition at unlock.	Activate vehicle ignition and accessory at unlock.	—	—	—		
36	Activation/desactivation remote Valet Mode	—	by remote : FUNCTION --> LOCK + UNLOCK or valet button	By Valet button only	—	—	—		
37	Security Remote car starter Special application	No special application	Security ON: Shutdown Engine if the door is opened before UNLOCK is pressed. (Door trigger required).	—	—	—	—		
38	System control by OEM Remote	Disable	Press 3x Lock to remote start	Start/Stop on trigger shock sensor	Alarm control by OEM Remote.	Press Lock, Unlock Lock to remote start	—		
39	Temperature option	Disable	Enable : AUX1 activated at 5°C when remote started (see function 25)	—	—	—	—		
LEGEND: FUNCTION BY DEFAULT									

MANUAL TRANSMISSION SEQUENCE FOR COMPATIBLE VEHICLES ONLY

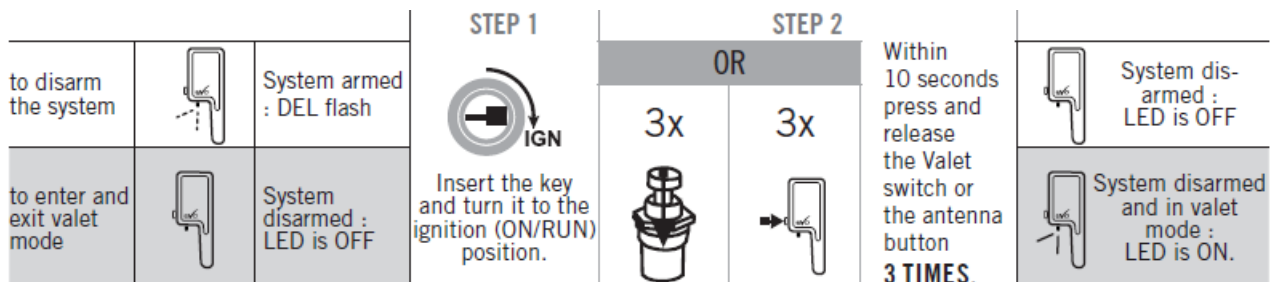


TO ENABLE COLD START MODE Press and release the AUX button, within 12 seconds simultaneously press and and hold the LOCK and START buttons for 1 second. The parking lights will flash once.

TO DISABLE COLD START MODE Press and release the AUX button, within 12 seconds simultaneously press and and hold the LOCK and START buttons for 1 second. The parking lights will flash twice.

- Put the Remote-Starter/alarm into Valet
- Remote-Start the vehicle
- Open the hood
- Press the brake pedal
- Turn the key to the ignition position.
- Disable Ready Mode (manual transmission).

DISARM / ENTER / EXIT VALET MODE



REMOTE START DIAGNOSTICS

Parking Lights flashes (before starting) :

- 3x Ready mode disabled
- 4x Valet mode activated (The LED is on)
- 5x Hood open

Parking Lights flashes (after Shutdown) :

- Normal stop (Brake, Park Brake)
- Runtime expired or shut down by transmitter
- No tachometer signal
- Hood open
- Over crank threshold (8 seconds)

ALARM DIAGNOSTICS

Parking Lights flashes (after disarm) :

- 3x Door open – zone 3
- 4x Shock sensor – zone 4
- 5x Hood open – zone 5
- 6x Trunk open – zone 6

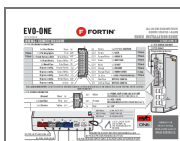
WARNING

NOTICE The manufacturer will accept no responsibility for any electrical damage resulting from improper installation of the product, including either damage to the vehicle itself or to the remote-starter module. This module must be installed by a certified technician including all of the supplied safety devices. Please note that this guide has been written for trained professional technicians, a certain level of skills and knowledge is therefore assumed. Please review the Installation Guide carefully before beginning any work.

WARNING By default this system is setup for vehicles with a manual transmission. For vehicles with an automatic transmission, the safety wire loop on the main unit must be cut. Before proceeding to the installation, make sure that the vehicle does not attempt to start when the vehicle is in the “drive” or “reverse” position. If an automatic transmission vehicle starts when the transmission is in gear, ensure that the safety wire loop on the unit is not cut. Once the safety wire loop is cut, the system is considered an automatic transmission remote-starter indefinitely. Once a loop is cut all warranties, guarantees, and liability is immediately void if the unit is installed on a manual transmission vehicle. Neither the manufacturer or distributor of this module is responsible of damages of any kind indirectly or directly caused by this module, except for the replacement of this module in case of manufacturing defects. This module must be installed by a qualified technician. This instruction guide may change without notice. To download the installation guide, user guide, or the latest quick installation guide, visit: WWW.FORTIN.CA
 Technical support: TEL: 514-255-4357 / 1-877-336-7797

Copyright © 2014-2021, FORTIN AUTO RADIO INC ALL RIGHTS RESERVED MADE IN CANADA

Documents / Resources



[FORTIN EVO-ONE All-In-One Data Interface Remote Starter/Alarm](#) [pdf] Installation Guide
 EVO-ONE, All-In-One Data Interface Remote Starter, All-In-One Data Interface Remote Alarm

References

- [Fortin | Bypass modules, remote starters and alarm systems](#)

