

# FORTIN EVO-ALL Remote Starter And Interface Module Installation Guide



REV.: 20240226

Guide # 106691



## Contents

### 1 STAND ALONE INSTALLATION

- 1.1 PARTS REQUIRED (NOT INCLUDED)
- 1.2 STAND ALONE CONFIGURATION
- 1.3 REMOTE STARTER FUNCTIONNALITY
- 1.4 REMOTE STARTER WARNING CARD
- 1.5 CONFIG.1 DESCRIPTION
- 1.6 CONFIG.1 AUTOMATIC TRANSMISSION WIRING CONNECTION
- 1.7 CONFIG.2 DESCRIPTION
- 1.8 CONFIG.2 AUTOMATIC TRANSMISSION WIRING CONNECTION
- 1.9 DCRYPTOR PROGRAMMING PROCEDURE
- 1.10 OPTIONAL RF-KIT PROGRAMMING
  - 1.10.1 PROGRAM BYPASS OPTION
  - 1.10.2 OPTIONAL FORTIN RF KIT SERIES 4 OR SERIES 9 PROGRAMMING
- 1.11 REMOTE STARTER FUNCTIONALITY

### 2 Documents / Resources

#### 2.1 References


### 3 Related Posts

## STAND ALONE INSTALLATION


## ADDENDUM – SUGGESTED WIRING CONFIGURATION




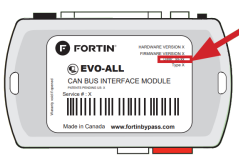
**ONLY COMPATIBLE WITH AUTOMATIC TRANSMISSION VEHICLES.**

					Vehicle functions supported in this diagram (functional if equipped)													
			CONF IGUR ATION 1 AT IG NITIO N SWI TCH	CON FIGU RATI ON 2 AT B CM	Immo bilize r byp ass	L o c k	U n l o c k	A r m	D is a r m	Tr un k ( o p e n )	R A P D is a b l e	Ta c h o m e t e r	D o o r S t a t u s	Tr un k S t a t u s	Ho o d S t a t u s *	Han d-Br ake S t a t u s	Foot -Br ake S t a t u s	PK 3, P a s s l o c k
VEHI CLE		YEAR S																
BUICK																		
Enco re	Flip -key	2013-2016	P.3-4	P.5-6	.	.	.	.	.	.	.	.	.	.	.	.	.	.

	<b>FIRMWARE VERSION</b>  <b>70.[41]</b> <b>GM MINIMUM</b>	To add the firmware version and the options, use the <b>FLASH LINK UPDATER</b> or <b>FLASH LINK MOBILE</b> tool, sold separately
---	--	--

	<b>Program bypass option</b> <b>IF THE VEHICLE IS NOT EQUIPPED WITH FUNCTIONAL HOOD PIN:</b>	UNIT OPTION		DESCRIPTION
		A11	OFF NON	Hood trigger (Output Status).

<b>Program bypass option</b> <b>(If equipped with OEM alarm):</b>	<b>D2</b>	Unlock before / Lock after (Disarm OEM alarm)
--	-----------	---

	<b>ATTENTION!</b>	 1. DATE: XX-XX	<b>E5</b>	<b>OFF NON</b>	<b>SPECIAL FUNCTIONS:</b> <b>BY DEFAULT DEACTIVATED</b>
				<b>ON OUI</b>	<b>MANUFACTURED MODULES BETWEEN: 04/2018 TO 04/2019</b>



The vehicle's Flip-key remote will not be functional during remote start.

## MANDATORY INSTALL

### \* HOOD PIN

**A11**

**OFF  
NON**



**HOOD STATUS :** THE HOOD PIN SWITCH MUST BE INSTALLED IF THE VEHICLE CAN BE REMOTE STARTED WITH THE HOOD OPEN, SET FUNCTION **A11** TO OFF.

**Notice:** the installation of safety elements are mandatory. The hood pin is an essential security element and must be installed.

THIS MODULE MUST BE INSTALLED BY A QUALIFIED TECHNICIAN. A WRONG CONNECTION CAN CAUSE PERMANENT DAMAGE TO THE VEHICLE.



This guide may change without notice. See [www.fortin.ca](http://www.fortin.ca) for latest version.

## PARTS REQUIRED (NOT INCLUDED)



**FLASH LINK UPDATER,**



**FLASH LINK MANAGER**  
SOFTWARE | PROGRAMME



Microsoft Windows Computer with Internet connection

**OR**



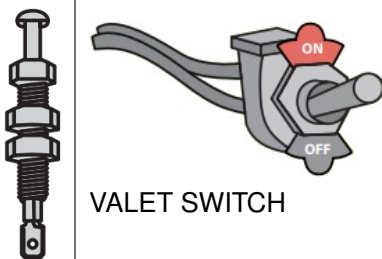
**FLASH LINK MOBILE**



**FLASH LINK MOBILE APP**





Smartphone Android or iOS with Internet connection (provider charges may apply).

MANDATORY	
HOOD PIN	<div>REMOTE START SAFETY OVERRIDE SWITCH</div> <div></div> <div>VALET SWITCH</div>
Part #: RSPB available, Sold separately.	

**Notice:** the installation of safety elements are mandatory. The hood pin and the valet switch are essential security elements and must be installed.

#### STAND ALONE CONFIGURATION

	Program bypass option:	UNIT OPTION	DESCRIPTION
		D1	Standalone enable

	Program bypass option with RF KIT antenna:	UNIT OPTION	DESCRIPTION
		H1 to H6	Supported RF Kits and <b>select</b> RF Kit


#### REMOTE STARTER FUNCTIONNALITY



**RF KIT  
REMOTE STARTER required  
(sold separately)**

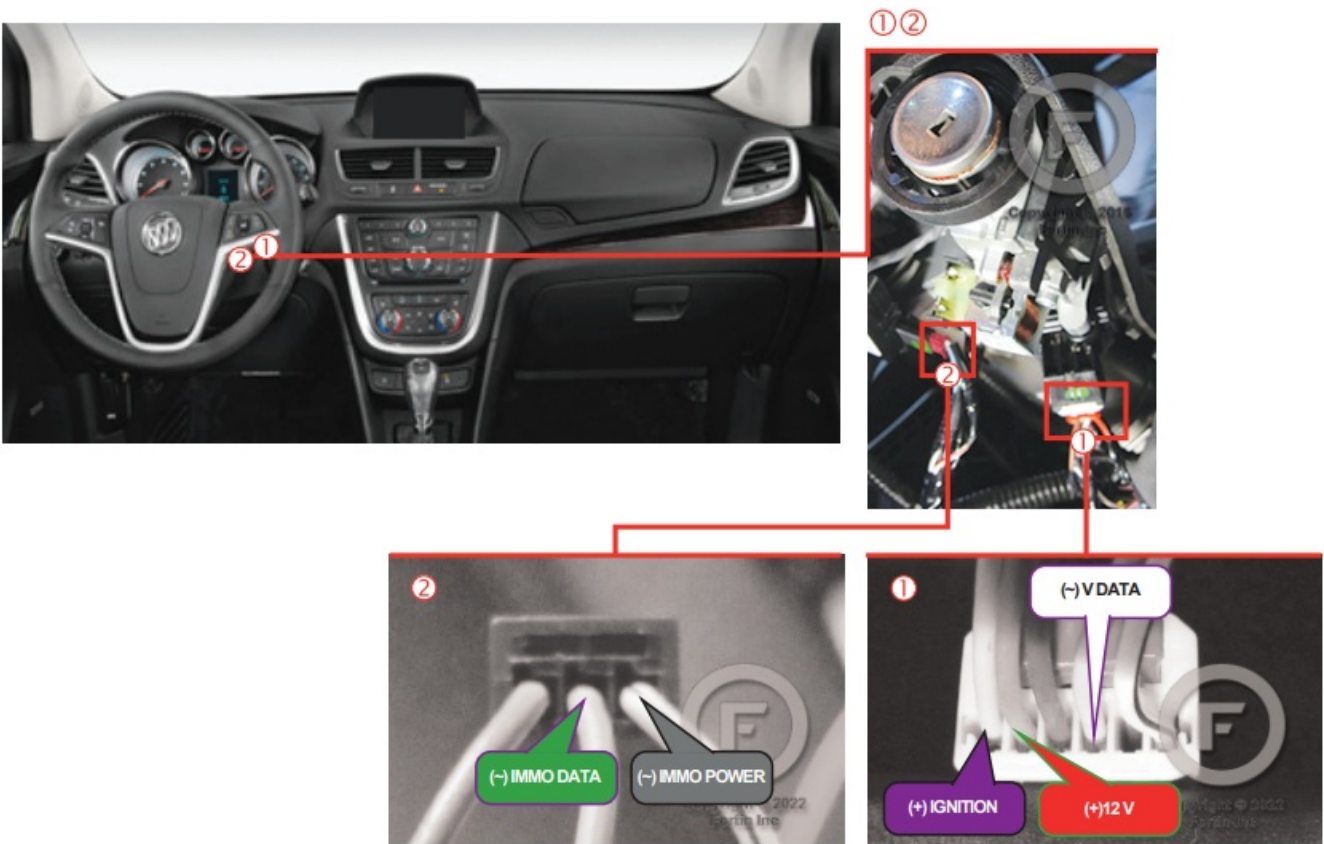
REMOTE STARTER DIAGNOSTICS	
MODULE RED LED	
x2 flash :	Brake ON
x3 flash :	No tach
x4 flash :	Ignition before start
x5 flash :	Hood Open

#### REMOTE STARTER WARNING CARD

 <b>CUT THIS WARNING CARD AND STICK IT ON A VISIBLE PLACE:</b> or use the package <b>RSPB</b> , Sold separately.		<b>WARNING</b>
		<b>REMOTE STARTER</b>
THE VEHICLE CAN BE STARTED BY EITHER: PRESSING THE LOCK BUTTON ON THE OEM REMOTE 3 TIMES CONSECUTIVELY OR BY A SMARTPHONE. <b>TURN ON THE SAFETY SWITCH LOCATED UNDER THE DASHBOARD BEFORE WORKING ON THE VEHICLE.</b>		

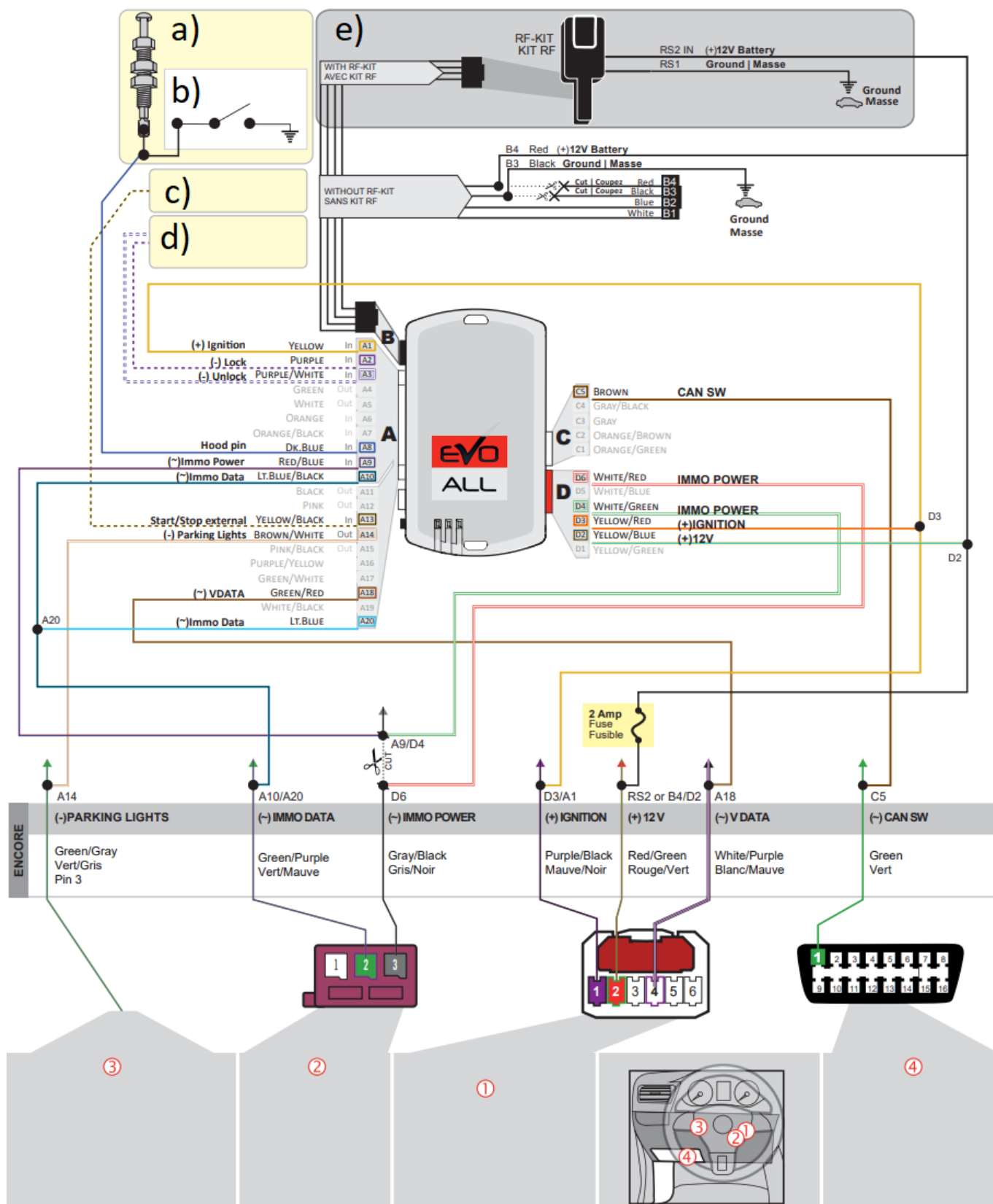
CONFIG.1 DESCRIPTION

AT IGNITION SWITCH



(1)(2) Ignition barrel

CONFIG.1 AUTOMATIC TRANSMISSION WIRING CONNECTION



a) **Hood pin** only required on vehicles not equipped with a factory hood pin.

b) **SAFETY OVERRIDE SWITCH**

c) Start / Stop external control

d) (-) Lock/Unlock input external control

e) **OPTIONAL RF-KIT**

(1) Back view

White 6-pin connector

**At Ignition harness**

(2) Back view

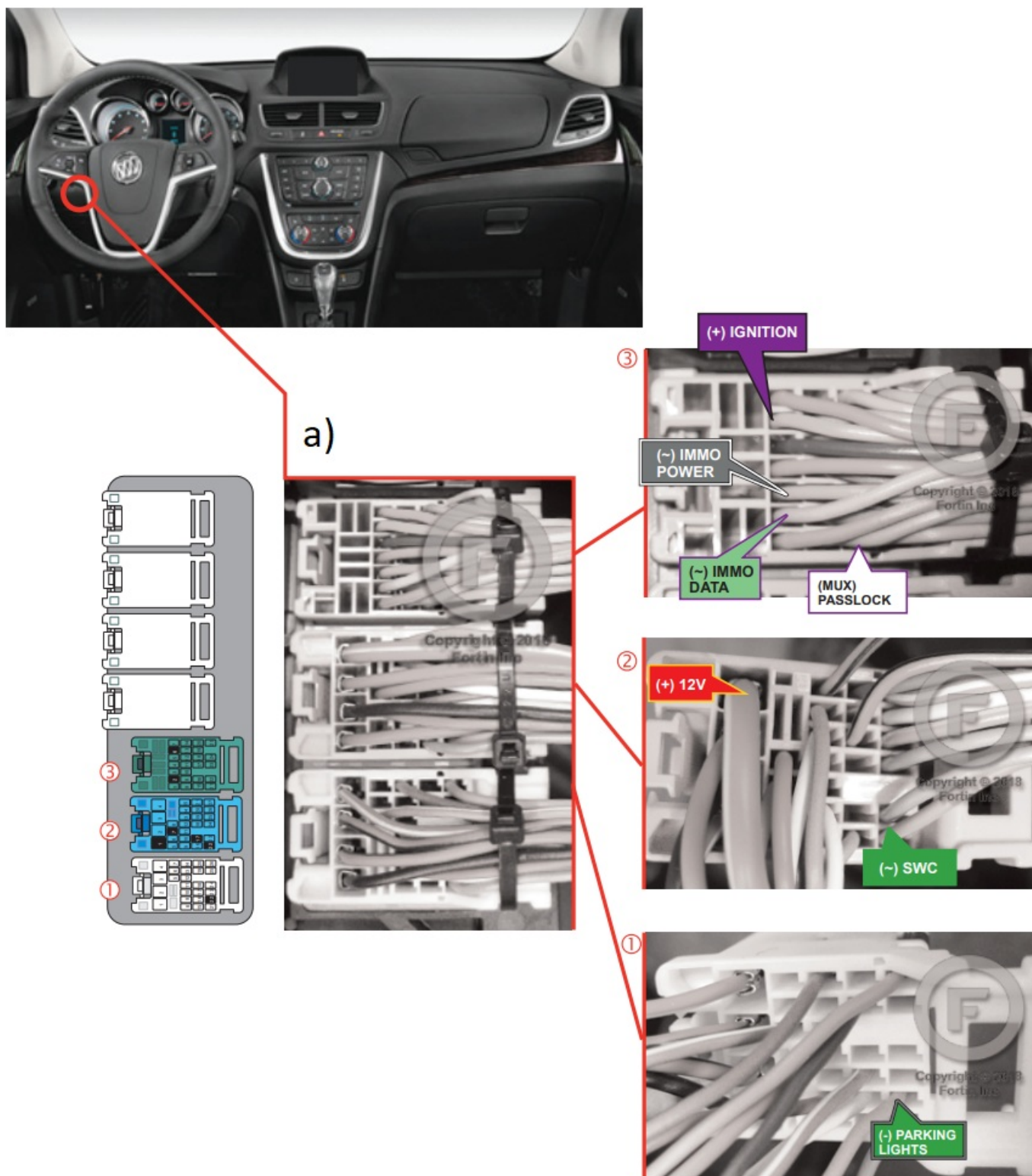
Burgundy 3-pin connector

**Key Bypass**

(3) Back view  
Black 12-pin connector  
**At Parking light switch**  
(4) Front View  
White 16-pin  
**OBDII Connector**

## CONFIG.2 DESCRIPTION

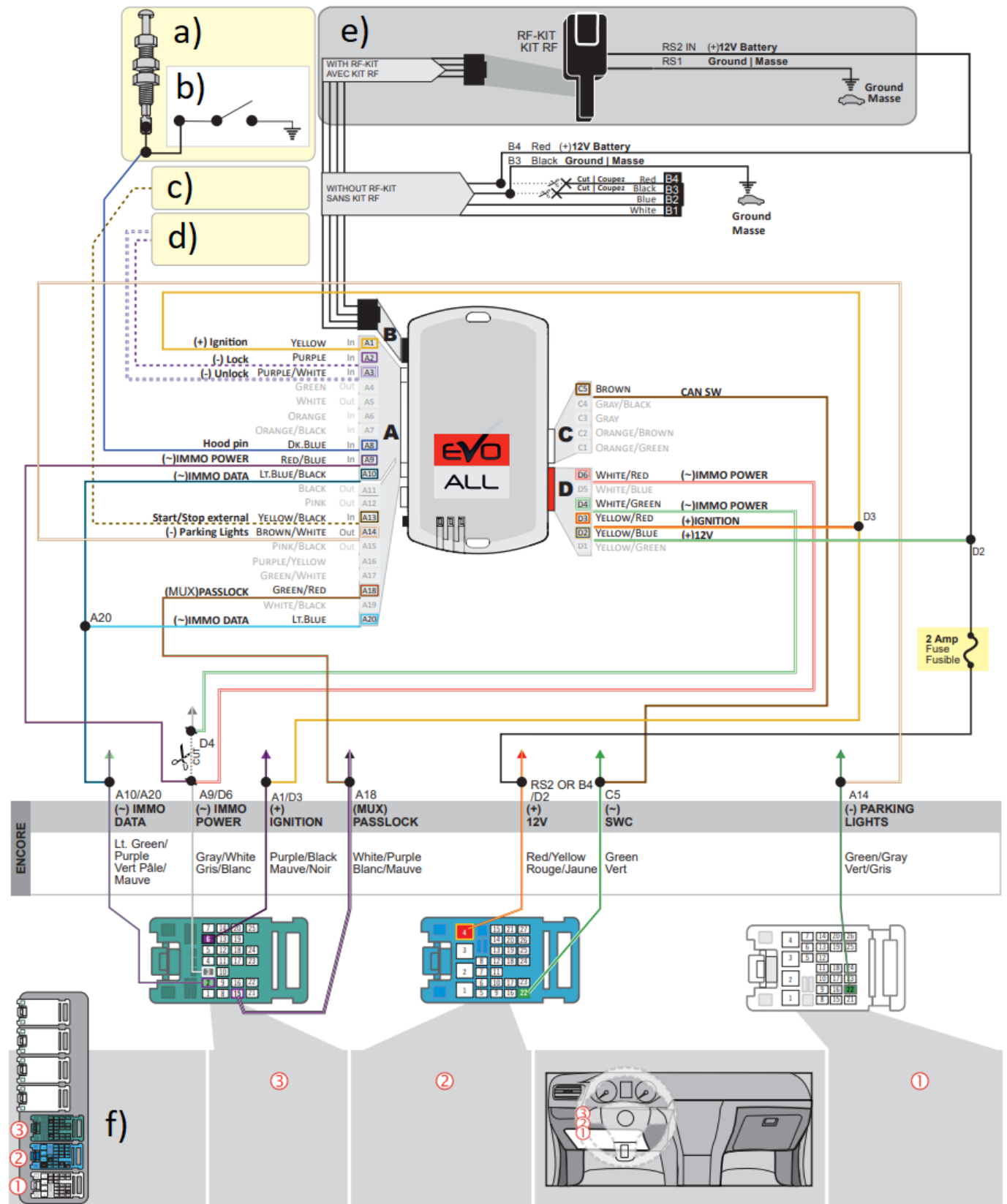
AT BCM



a) **BCM** – On the left of the steering column



## CONFIG.2 AUTOMATIC TRANSMISSION WIRING CONNECTION



a) **Hood pin** only required on vehicles not equipped with a factory hood pin.

b) **SAFETY OVERRIDE SWITCH**

c) **Start / Stop external control**

d) **(-) Lock/Unlock input external control**

e) **OPTIONAL RF-KIT**

f) **BCM** – On the left of the steering column

(1) Back view

26-Pin White Connector

**At BCM**



(2) Back view  
27-Pin Blue Connector  
**At BCM**  
(3) Back view  
25-Pin Green Connector  
**At BCM**

## DCRYPTOR PROGRAMMING PROCEDURE



Parts required (not included)



1x  **FLASH LINK UPDATER**,


1x  **FLASH LINK MANAGER**  
SOFTWARE | PROGRAMME

1x  Microsoft Windows Computer with Internet connection

OR

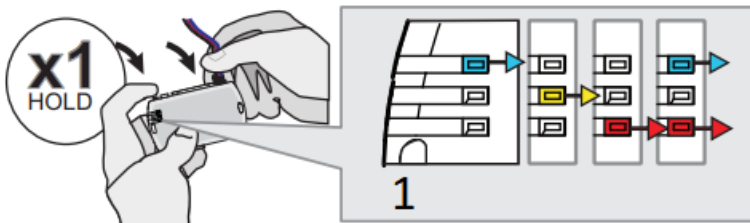
1x  **FLASH LINK MOBILE**

1x  **FLASH LINK MOBILE APP**

1x  Smartphone Android or iOS with Internet connection (Internet provider charges may apply)

**BEFORE PROGRAMMING SET THE UNIT OPTIONS AND SAVE.**

[1]

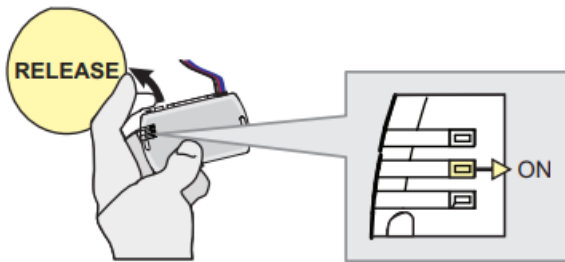


1. LED may differ depending on the module casing.

**Press** and **hold** the programming button:  
**Connect** the 4-PIN Data-link harness (Black connector).

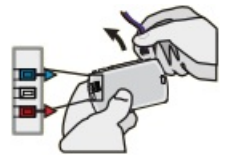
↳ The Blue, Red, Yellow and Blue & Red LEDs will alternatively illuminate.

[2]

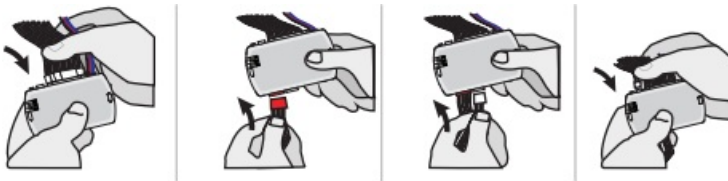


**Release** the programming button when the LED is YELLOW.

If the LED is not solid YELLOW disconnect the 4-Pin connector (Data-Link) and go back to step 1.

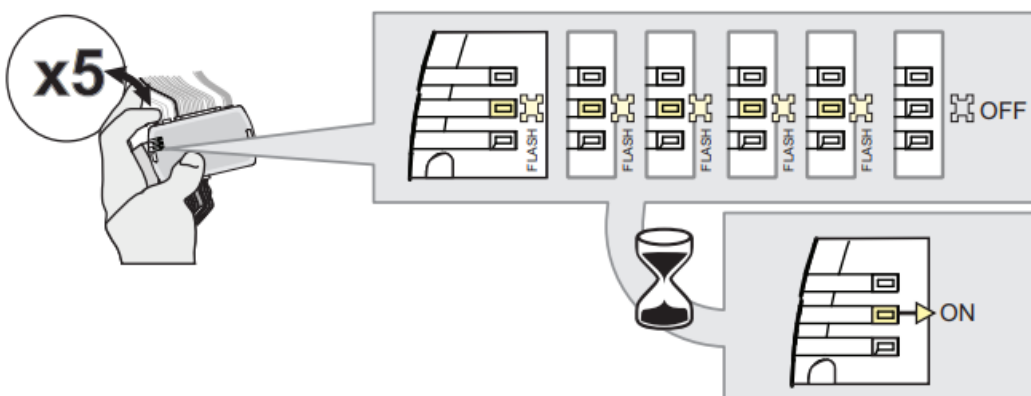


[3]



**Insert** the required remaining connectors.

[4]



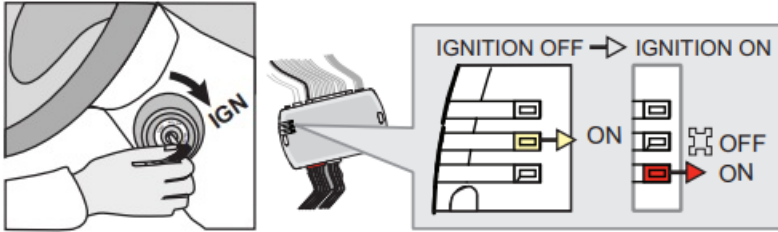
**Press** and **release** the programming button five times (5x).

↳ The YELLOW LED will alternate between 5x flashes and a pause.

↳ Wait until the YELLOW LED turns ON.

[5]

---



**Turn** the key to the Ignition ON/RUN position.

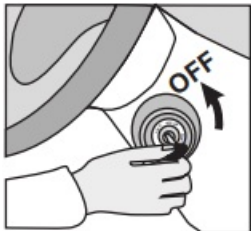
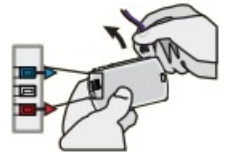
↳ The RED LED will turns ON.

↳ The YELLOW LED turns OFF.

If the LED is not solid RED disconnect the 4-Pin connector (Data-Link) and go back to step 1.

[6]

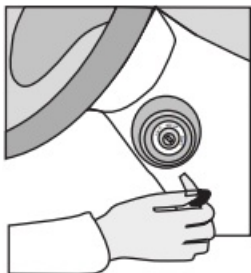
---



**Turn** the key to the OFF position.

[7]

---



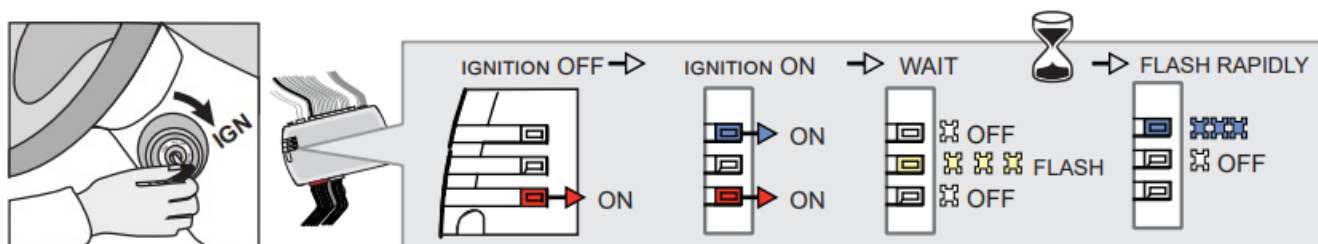
**Remove** the key from the Ignition barrel.

[8]



**Wait 5 seconds.**

**[9]**



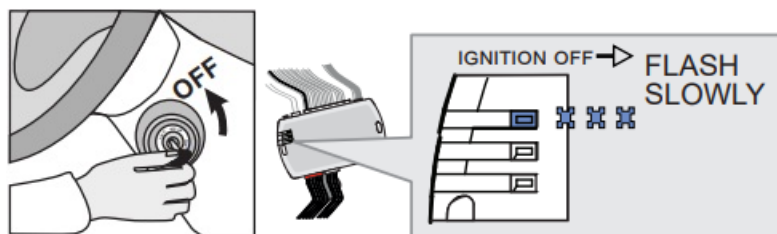
**Turn** the Ignition to the ON position.

- ↳ The BLUE LED will turns ON.
- ↳ Wait, the BLUE & RED LED will turns OFF.
- ↳ Wait, the YELLOW LED will Flash.
- ↳ Wait, the YELLOW LED will turns OFF.
- ↳ Wait, the BLUE LED will Flash rapidly.

If the LEDs do not react as shown, disconnect the 4-Pin connector (Data-Link) and go back to step 1.



**[10]**

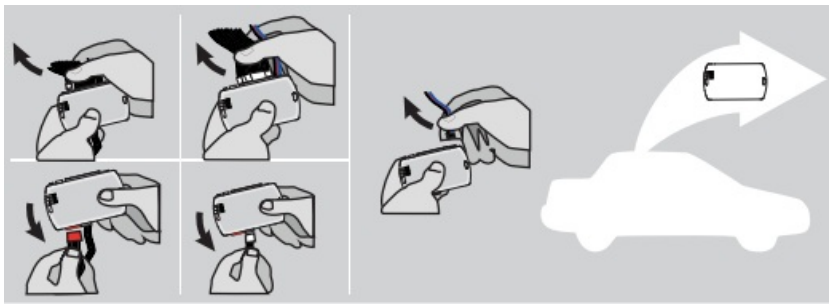


**Turn** the key to the OFF position.

- ↳ the BLUE LED flash slowly.

**[11]**

---



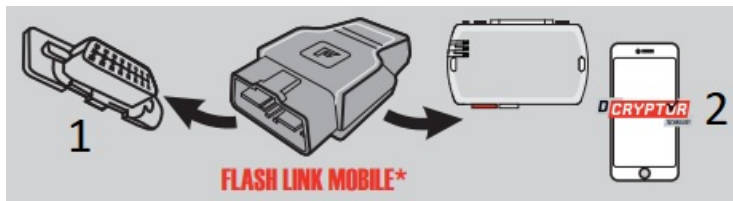
**Disconnect** all the connectors and after the Data-Link (4-pins) connector.

[12]



Microsoft Windows Computer with Internet connection\*

OR



1. VEHICLE'S OBDII CONNECTOR

2. Smartphone\*

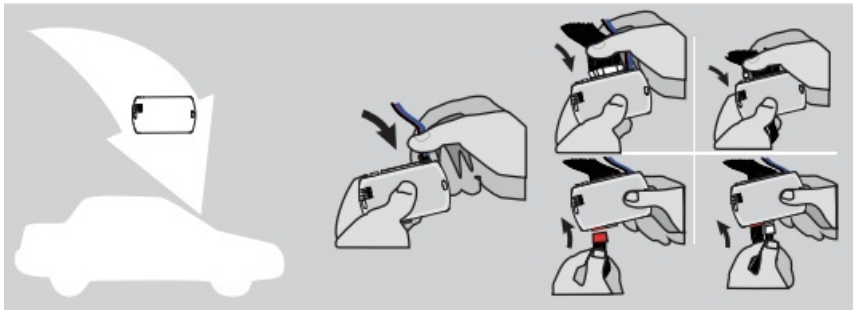
(Internet provider charges may apply)

**Use** the tool:

**FLASH LINK UPDATER** or **FLASH LINK MOBILE** to visit the DCryptor menu.

\*Parts required (not included)

[13]



**AFTER DCRYPTOR PROGRAMMING COMPLETED**

Go back to the vehicle and reconnect the 4-Pin (Data-Link) connector and after, all the remaining connector.



The module is now programmed.




**REMOTE STARTER / ALARM VERIFICATION PROCEDURE**













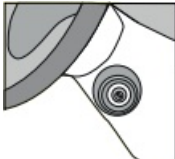
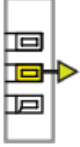









Test the remote starter. **Remote start** the vehicle.

**OPTIONAL RF-KIT PROGRAMMING**

**PROGRAM BYPASS OPTION**




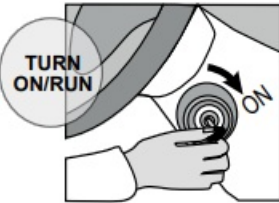


	<p>Program bypass option:</p>	<p>H2</p>	<p><input checked="" type="checkbox"/> Supported RF-KITS enable</p> <p><input checked="" type="checkbox"/> H2 Fortin 2</p>
---	-------------------------------	-----------	--

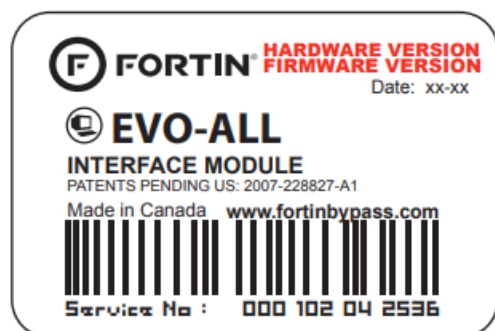
**OPTIONAL FORTIN RF KIT SERIES 4 OR SERIES 9 PROGRAMMING**

 <p>The module must be programmed on the vehicle.</p>	<p>1</p>  <p>Turn the key to the ON/RUN position.</p>	<p>2</p>  <p>Turn the ignition to the OFF position.</p>	<p>3</p>  <p>Turn the key to the ON/RUN position.</p>	<p>4</p> <p>4X BRAKES</p>  <p>Press and release the brake pedal four times.</p>  <p>The LED will turn off each time.</p>	<p>5</p> <p>ON EACH TRANSMITTER</p> <p>4 BUTTONS</p> <p> PRESS AND RELEASE</p> <p> PRESS AND RELEASE</p> <p> PRESS AND RELEASE</p> <p>1 BUTTON</p> <p> PRESS APPROX. 12 SEC. AND WAIT FOR THE BLUE LED TO TURN OFF THEN BACK ON SOLID THEN RELEASE.</p>	<p>6</p>  <p>Turn the ignition to the OFF position.</p>
  <p>MAKE SURE THE IGNITION KEY HAS BEEN IN THE OFF POSITION FOR AT LEAST 5 SECONDS.</p>	 <p>The YELLOW LED will turn ON solid.</p>	 <p>The YELLOW LED will turn Off.</p>	 <p>The LED will turn ON solid.</p>	 <p>The LED will flash rapidly.</p>  <p>The 3 LED will turn ON solid.</p>	 <p>The LED will turn off each time.</p>  <p>The LED will flash rapidly.</p>  <p>The 3 LED will turn off each time.</p>	 <p>The LED will turn Off.</p>  <p>The 3 LED will turn off.</p>





 <p>All doors must be closed.</p>	 <p><b>Remote start</b> the vehicle.</p>	 <p><b>Unlock</b> the doors with the remote-starter remote.</p>	 <p><b>Insert and Turn</b> the key to the Ignition ON/RUN position.</p>	 <p><b>Press</b> the brake pedal.</p>	 <p>The vehicle can now be put in to gear and driven.</p>
--	---	--	--	--	--



Module label

### Notice: Updated Firmware and Installation Guides

Updated firmware and installation guides are posted on our web site on a regular basis. We recommend that you update this module to the latest firmware and download the latest installation guide(s) prior to the installation of this product.

### WARNING

The information on this sheet is provided on an (as is) basis with no representation or warranty of accuracy whatsoever. It is the sole responsibility of the installer to check and verify any circuit before connecting to it. Only a computer safe logic probe or digital multimeter should be used. FORTIN ELECTRONIC SYSTEMS assumes absolutely no liability or responsibility whatsoever pertaining to the accuracy or currency of the information supplied. The installation in every case is the sole responsibility of the installer performing the work and FORTIN ELECTRONIC SYSTEMS assumes no liability or responsibility whatsoever resulting from any type of installation, whether performed properly, improperly or any other way. Neither the manufacturer or distributor of this module is responsible of damages of any kind indirectly or directly caused by this module, except for the replacement of this module in case of manufacturing defects. This module must be installed by qualified technician. The information supplied is a guide only. This instruction guide may change without notice. Visit [www.fortinbypass.com](http://www.fortinbypass.com) to get the latest version.



## TECH SUPPORT

---

Tél: 514-255-HELP (4357)  
1-[877-336-7797](tel:877-336-7797)



## ADDENDUM GUIDE

[www.fortinbypass.com](http://www.fortinbypass.com)

---

WEB UPDATE



## Documents / Resources



[FORTIN EVO-ALL Remote Starter And Interface Module](#) [pdf] Installation Guide  
C1, D2, A11, EVO-ALL Remote Starter And Interface Module, EVO-ALL, Remote Starter And Interface Module, Starter And Interface Module, Interface Module, Module

## References

- [The domain name off.la is for sale](#)
- [wah damn solid](#)
- [system.si](#)
- [User Manual](#)

[Manuals+](#), [Privacy Policy](#)

This website is an independent publication and is neither affiliated with nor endorsed by any of the trademark owners. The "Bluetooth®" word mark and logos are registered trademarks owned by Bluetooth SIG, Inc. The "Wi-Fi®" word mark and logos are registered trademarks owned by the Wi-Fi Alliance. Any use of these marks on this website does not imply any affiliation with or endorsement.