



ADDENDUM – SUGGESTED WIRING CONFIGURATION STAND ALONE INSTALLATION

Contents [[hide](#)]

- [1 Data Bypass and Interface Module](#)
- [2 MANDATORY INSTALL](#)
- [3 PARTS REQUIRED](#)
- [4 STAND ALONE CONFIGURATION](#)
- [5 REMOTE STARTER FUNCTIONALITY](#)
- [6 DESCRIPTION](#)
- [7 REMOTE STARTER FUNCTIONALITY](#)
- [8 Documents / Resources](#)
 - [8.1 References](#)

Data Bypass and Interface Module

 **ONLY COMPATIBLE WITH AUTOMATIC TRANSMISSION VEHICLES.**



VEHICLE YEARS

BUICK

Encore Push-To-Start 2017-2020

CHEVROLET

Trax Push-To-Start 2017-2024

Vehicle functions supported in this diagram (functional if equipped)

•	Immobilizer by pass
•	Lock
•	Unlock
•	Arm
•	Disarm
•	Trunk (open)
•	RAPDisable
•	Tachometer
•	Heated Seats
•	Door Status
•	Trunk Status

•	Hand – Brake Stat us
•	Foot- Brake Status
•	OEM Remote Monitoring



FIRMWARE VERSION VERSION LOGICIELLE 70.[45] GM MINIMUM

To add the firmware version and the options, use the FLASH LINK UPDATER or FLASH LINK MOBILE tool, sold separately.

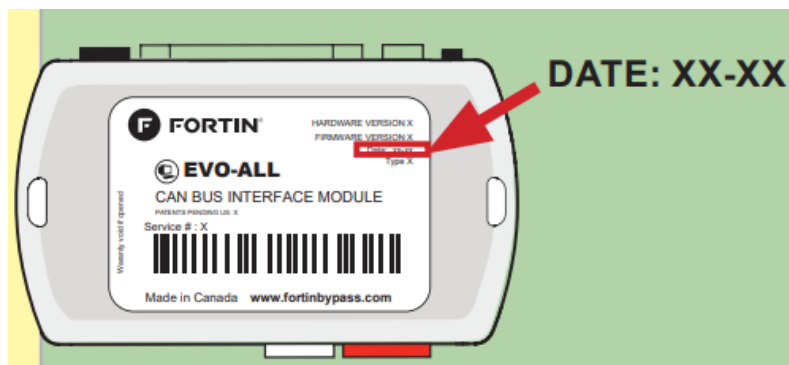


Program bypass option:

IF THE VEHICLE IS NOT EQUIPPED WITH FUNCTIONAL HOOD PIN:

UNIT OPTION	DESCRIPTION
C1	OEM Remote status (Lock/Unlock) monitoring
A11 OFF NON	Hood trigger (Output Status).
D6	Push-to-Start

⚠ ATTENTION!



E5

OFF NON	SPECIAL FUNCTIONS: BY DEFAULT DEACTIVATED
ON OUI	MANUFACTURED MODULES BETWEEN: 04/2018 TO 04/2019



Parts required (Not included)

1X 5 Amp Fuse

1X 1k Ohm Resistor

MANDATORY INSTALL

* HOOD PIN



HOOD STATUS : THE HOOD PIN SWITCH MUST BE INSTALLED IF THE VEHICLE CAN BE REMOTE STARTED WITH THE HOOD OPEN, SET FUNCTION A11 TO OFF.

A11 OFF

NON

Notice: the installation of safety elements are mandatory. The hood pin is an essential security element and must be installed.

THIS MODULE MUST BE INSTALLED BY A QUALIFIED TECHNICIAN. A WRONG CONNECTION CAN CAUSE PERMANENT DAMAGE TO THE VEHICLE.

This guide may change without notice. See www.fortin.ca for latest version.


PARTS REQUIRED

(NOT INCLUDED)

1x  FLASH LINK UPDATER,


1x  FLASH LINK MANAGER

SOFTWARE | PROGRAMME

1x  Microsoft Windows Computer with Internet connection Ordinateur Microsoft Windows avec connection Internet

1x  1x FLASH LINK MOBILE

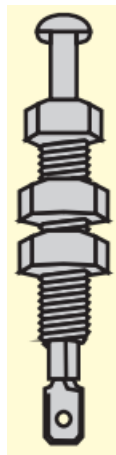
1x  1x FLASH LINK MOBILE APP

1x  1x Smartphone Android or iOS with Internet connection (provider charges may apply)

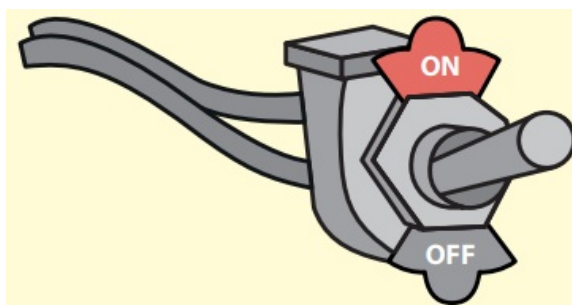
MANDATORY

HOOD PIN

CONTACT



REMOTE START SAFETY OVERRIDE SWITCH



VALET SWITCH COMMUTATEUR VALET

Part #: RSPB available, Sold separately.

Notice: the installation of safety elements are mandatory.



The hood pin and the valet switch are essential security elements and must be installed.

STAND ALONE CONFIGURATION



Program bypass option

OEM Remote Stand Alone Remote Starter:

UNIT OPTION	DESCRIPTION
D1.10 	By default, LOCK, LOCK, LOCK
D1.1 	LOCK, UNLOCK, LOCK



Program bypass option with oem remote:

UNIT OPTION	DESCRIPTION
C1	OEM Remote Monitoring



Program bypass option with RF KIT antenna:

UNIT OPTION	DESCRIPTION
H1 to H6	Supported RF Kits and select RF Kit

REMOTE STARTER FUNCTIONALITY



All doors must be closed.



Press the OEM remote's Lock button 3x to remote-start (or remote-stop) the vehicle.



The vehicle will START.

REMOTE STARTER DIAGNOSTICS

MODULE RED LED

x2 flash :	Brake ON
x3 flash :	No tach
x4 flash :	Ignition before start
x5 flash :	Hood Open

REMOTE STARTER WARNING CARD



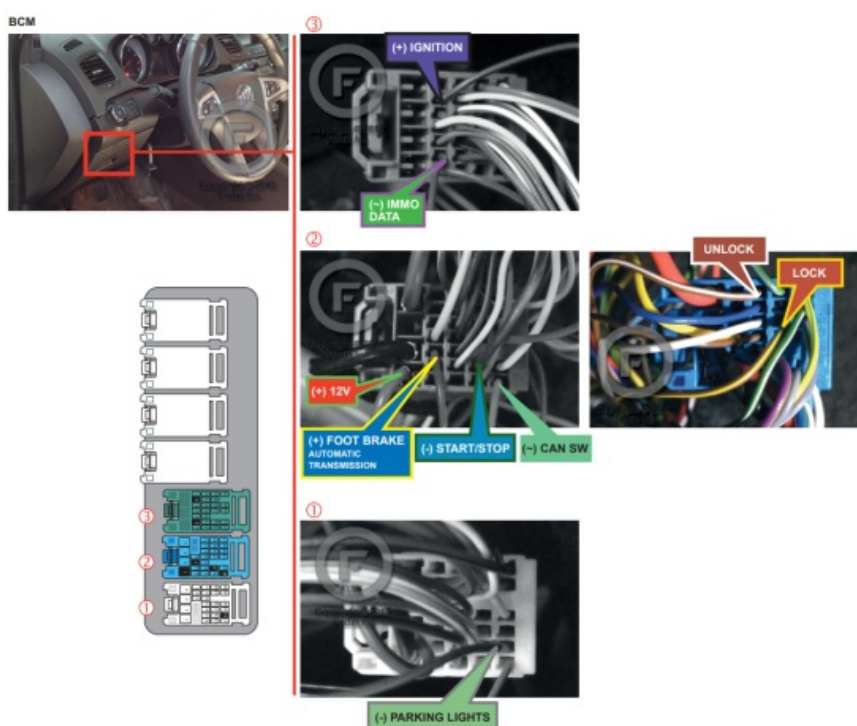
CUT THIS WARNING CARD AND STICK IT ON A VISIBLE PLACE: or use the package RSPB, Sold separately.

WARNING

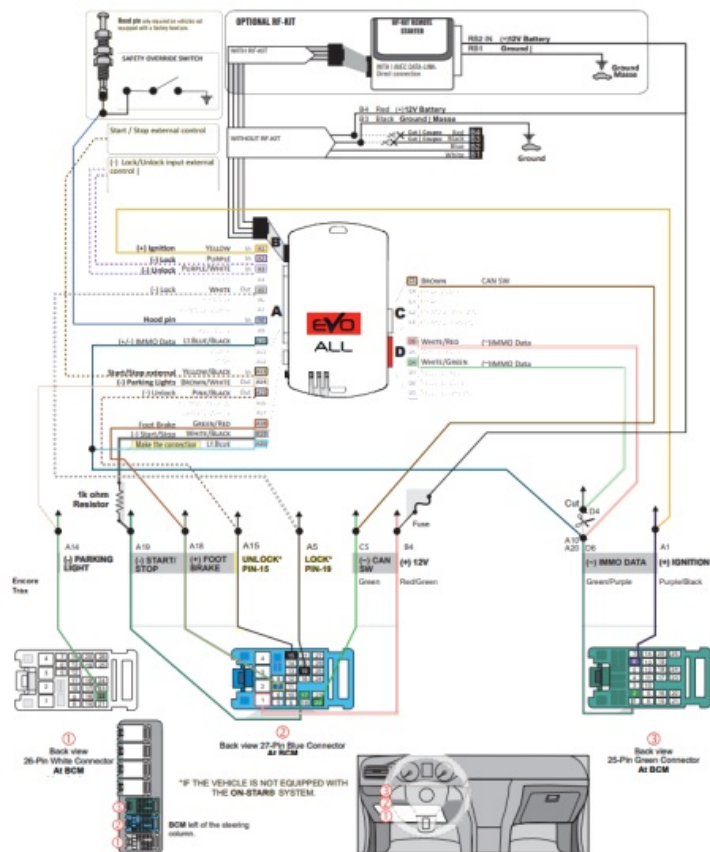
REMOTE STARTER

THE VEHICLE CAN BE STARTED BY EITHER: PRESSING THE LOCK BUTTON ON THE OEM REMOTE 3 TIMES CONSECUTIVELY OR BY A SMARTPHONE. TURN ON THE SAFETY SWITCH LOCATED UNDER THE DASHBOARD BEFORE WORKING ON THE VEHICLE.

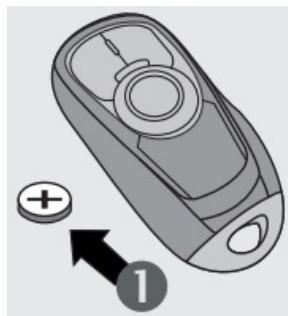
DESCRIPTION



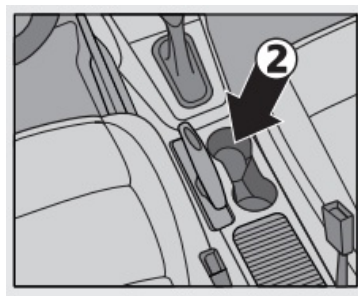
AUTOMATIC TRANSMISSION WIRING CONNECTION



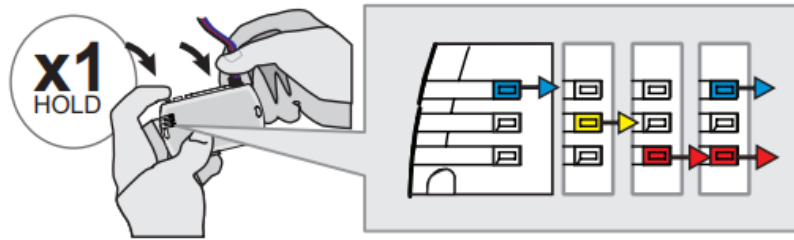
KEY BYPASS PROGRAMMING PROCEDURE 1/3



1. Remove the battery from the OEM remote.
2. Place the OEM remote in the front cup holder in the center console.
Refer to vehicle user guide for keyport location.



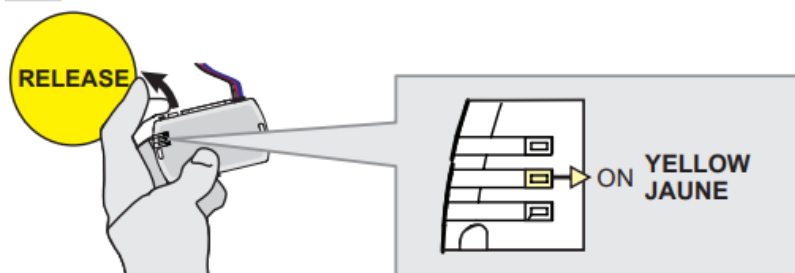
1



Press hold and the programming button: Connect the 4-PIN Data-link harness (Black connector).

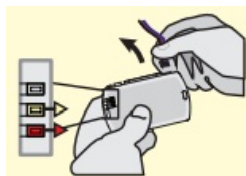
↳ The Blue, Red, Yellow and Blue & Red LEDs will alternatively illuminate.

2

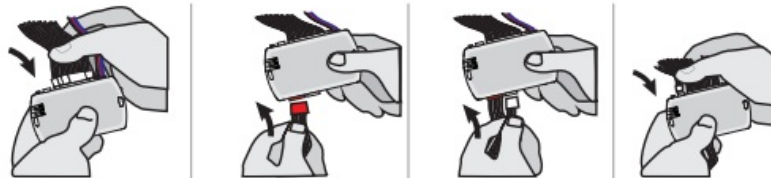


If the LED is not solid YELLOW the 4-Pin connector Release the programming button when the LED is YELLOW disconnect.

(Data-Link) and go back to step 1.

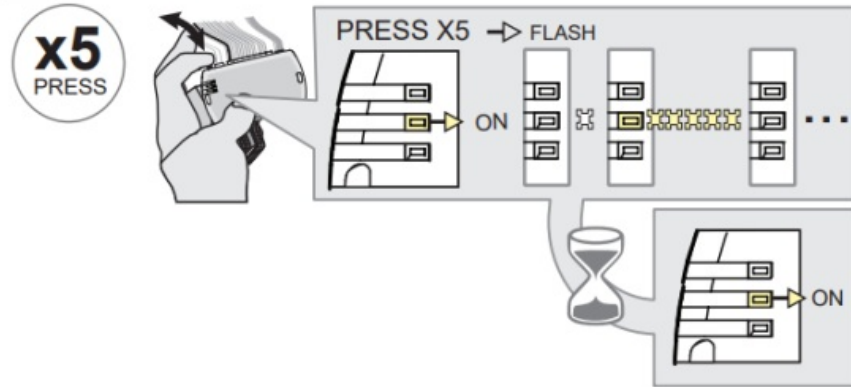


3



Insert the required remaining connectors.

4

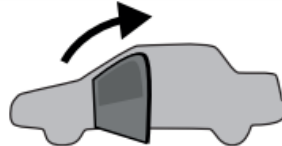


Press release and the programming button five (5x) times.

↳ The YELLOW LED will flash 5 times each second.

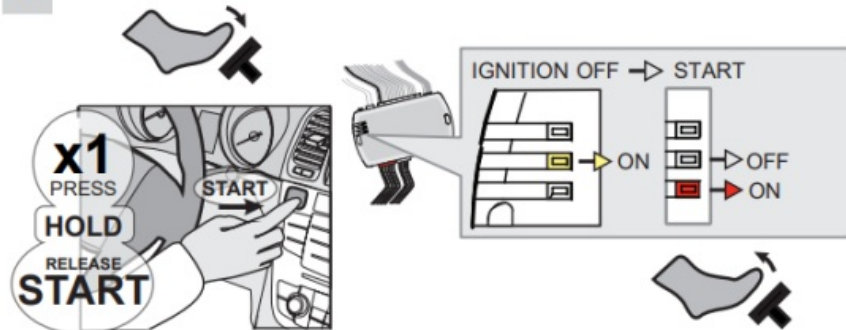
↳ WAIT for the YELLOW LED to turn ON solid.

5



Open the driver door.

6



Press the foot-brake pedal.

Release the foot-brake pedal.

Press the Push-to-Start button until the engine start.

↳ The RED LED will turn ON.

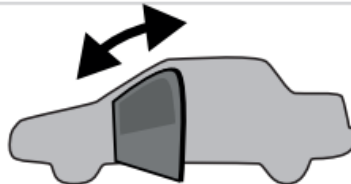
↳ The YELLOW LED will turn OFF.

7



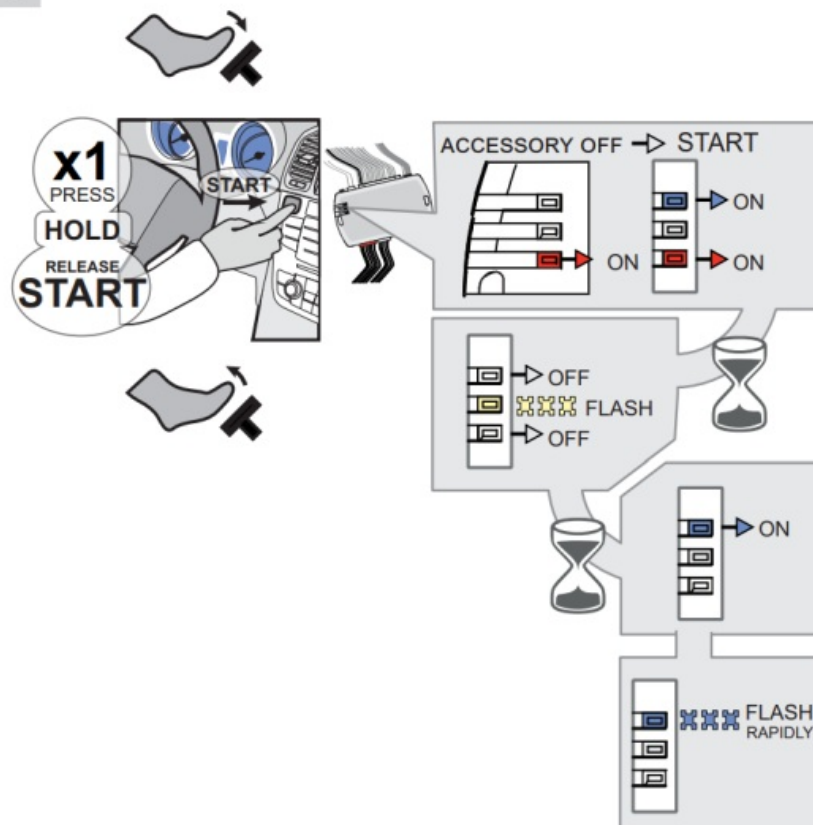
Press the Push-to-Start button until the engine turn OFF.

8



Close and open the driver door.

9



Press the foot-brake pedal.

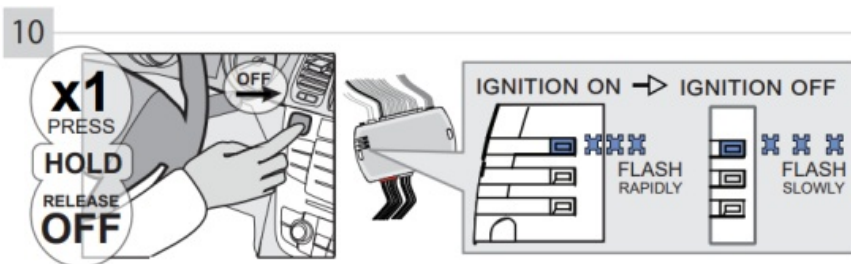
Press the Push-to-Start button until the engine start.

Release the foot-brake pedal.

The BLUE LED will turn ON.

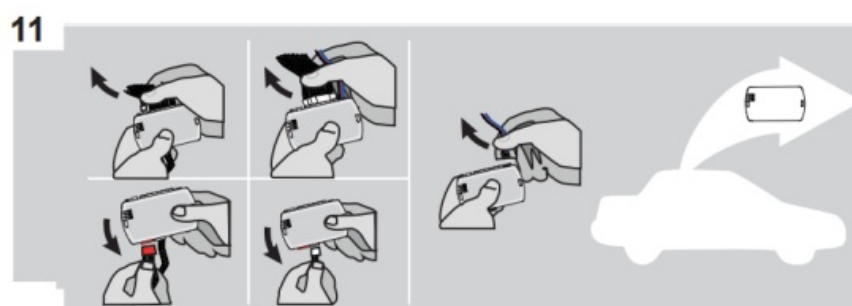
↳ The BLUE LED will turn OFF. The RED LED will turn OFF.

- ↳ The YELLOW LED will flash rapidly
- ↳ The BLUE LED will turn ON.
- ↳ The BLUE LED will flash rapidly

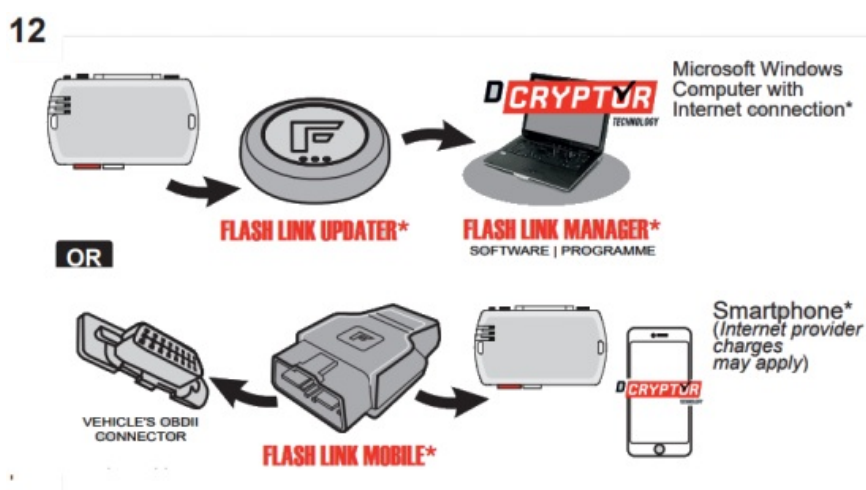


Press the Push-to-Start button until the engine turn OFF.

- ↳ The BLUE LED will flash slowly



Disconnect all the connectors and after the Data-Link (4-pins) connector.



Use the tool:

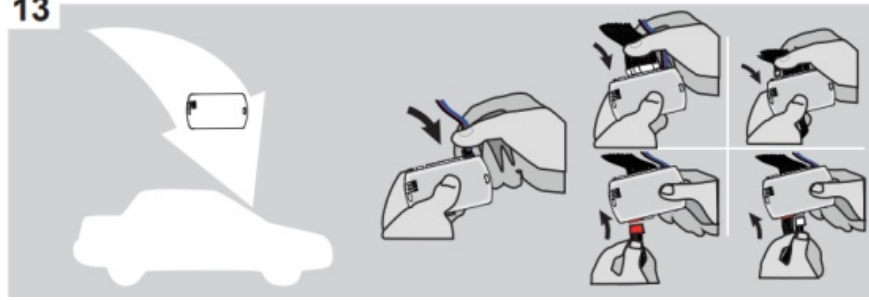
FLASH LINK UPDATER or

FLASH LINK MOBILE

to visit the DCryptor menu.

*Parts required (not included)

13



AFTER DCRYPTOR PROGRAMMING COMPLETED

Go back to the vehicle and reconnect the 4-Pin (Data-Link) connector and after, all the remaining connector.



The module is now programmed.



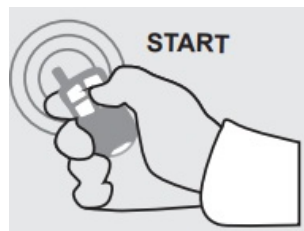
REMOTE STARTER / ALARM VERIFICATION

Test the remote starter. Remote start the vehicle.

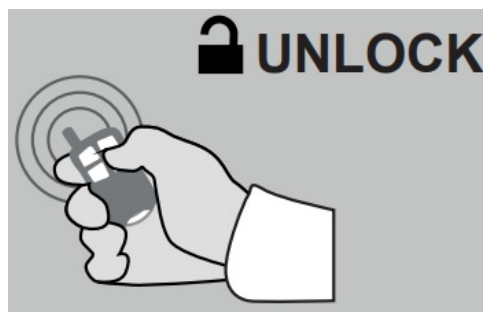
REMOTE STARTER FUNCTIONALITY



All doors must be closed.

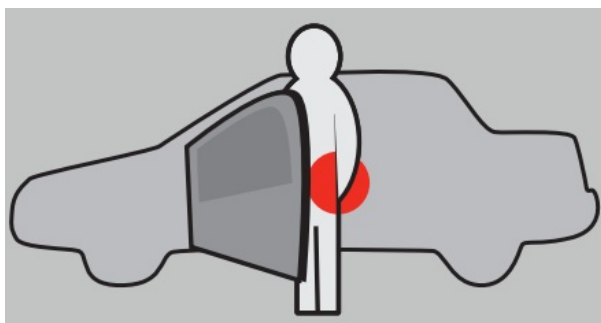


Remote start the vehicle.

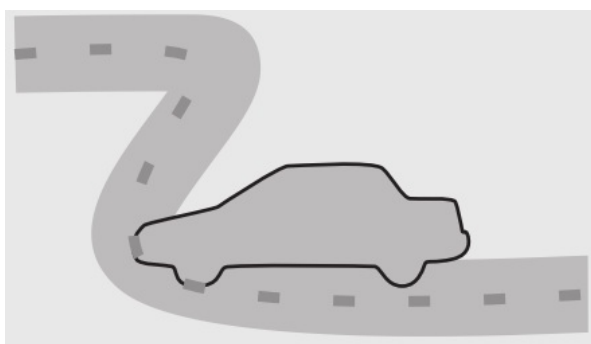


Unlock the doors with either:

- The OEM remote
- The remote-starter remote.

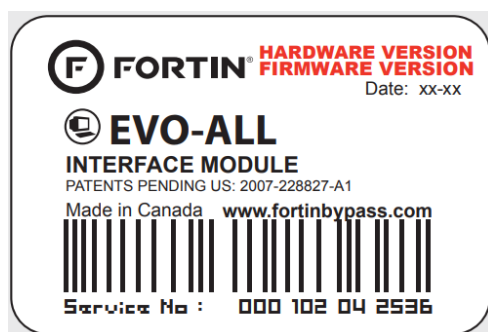


Enter the vehicle with the Intelligent key.



The vehicle can now be put in to gear and driven.

⚠ If the vehicle is not unlocked with one of these conditions, the remote-starter will shut down as soon as any door is opened.



www.fortinbypass.com

WARNING

The information on this sheet is provided on an (as is) basis with no representation or warranty of accuracy whatsoever.

It is the sole responsibility of the installer to check and verify any circuit before connecting to it. Only a computer safe logic probe or digital multimeter should be used. FORTIN ELECTRONIC SYSTEMS assumes absolutely no liability or

responsibility whatsoever pertaining to the accuracy or currency of the information supplied. The installation in every case is the sole responsibility of the installer performing the work and FORTIN ELECTRONIC SYSTEMS assumes no liability or responsibility whatsoever resulting from any type of installation, whether performed properly, improperly or any other way. Neither the manufacturer or distributor of this module is responsible of damages of any kind indirectly or directly caused by this module, except for the replacement of this module in case of manufacturing defects. This module must be installed by qualified technician. The information supplied is a guide only. This instruction guide may change without notice. Visit www.fortinbypass.com to get the latest version.



TECH SUPPORT

Tél: 514-255-HELP (4357)

1-[877-336-7797](tel:877-336-7797)

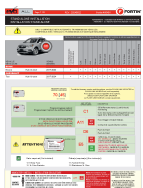


ADDENDUM GUIDE

www.fortinbypass.com

WEB UPDATE | MISE À JOUR INTERNET

Documents / Resources



[FORTIN EVO-ALL Data Bypass and Interface Module \[pdf\]](#) Installation Guide

EVO-ALL Data Bypass and Interface Module, EVO-ALL, Data Bypass and Interface Module, and Interface Module, Interface Module

References

- [User Manual](#)

■ FORTIN

◆ And Interface Module, Data Bypass and Interface Module, EVO-ALL, Evo-All Data Bypass and Interface Module, FORTIN, Interface Module

—Previous Post

[FORTIN Immobilizer Bypass Module Installation Guide](#)

Next Post—

FORTIN BUICK EVO-ONE Remote Starter Installation Guide

Leave a comment

Your email address will not be published. Required fields are marked *

Comment *

Name

Email

Website

☐ Save my name, email, and website in this browser for the next time I comment.

Post Comment

Search:

e.g. whirlpool wrf535swhz

Search

[Manuals+](#) | [Upload](#) | [Deep Search](#) | [Privacy Policy](#) | [@manuals.plus](#) | [YouTube](#)

This website is an independent publication and is neither affiliated with nor endorsed by any of the trademark owners. The "Bluetooth®" word mark and logos are registered trademarks owned by Bluetooth SIG, Inc. The "Wi-Fi®" word mark and logos are registered trademarks owned by the Wi-Fi Alliance. Any use of these marks on this website does not imply any affiliation with or endorsement.