



FORTIN 2023 Push To Start Remote Starters and Alarm Systems Installation Guide

[Home](#) » [FORTIN](#) » FORTIN 2023 Push To Start Remote Starters and Alarm Systems Installation Guide 

Contents

- [1 FORTIN 2023 Push To Start Remote Starters and Alarm Systems](#)
- [2 INSTALLATION STAND ALONE](#)
- [3 MANDATORY INSTALL](#)
- [4 Parts required \(Not included\)](#)
- [5 KEY CONTROL](#)
- [6 DESCRIPTION](#)
- [7 AUTOMATIC TRANSMISSION WIRING CONNECTION](#)
- [8 REMOTE STARTER FUNCTIONALITY](#)
- [9 CONTACT](#)
- [10 Documents / Resources](#)
 - [10.1 References](#)







FORTIN 2023 Push To Start Remote Starters and Alarm Systems



INSTALLATION STAND ALONE

- ONLY COMPATIBLE WITH AUTOMATIC TRANSMISSION VEHICLES

<div><div><div>PUSH START</div></div></div>		Vehicle functions supported in this diagram (functional if equipped) Fonctions du véhicule supportées dans ce diagramme (fonctionnelles si équipé)														
VEHICLE VEHICULES	YEARS ANNÉES	Key Control	T-Harness available (sold separately) Harnais en T disponible (vendu séparément)	Lock	Unlock	Tail Gate (Up & Down at engine off)	Heated Seats (AUX.1)	Parking Lights	Tachometer	Door Status	Trunk Status	Hood Status protection remote start	Hand-Brake Status	Foot-Brake Status	Push-to-Start Control	OEM Remote monitoring
MAZDA																
CX-50	PTS 2023	•	•	•	•	•	•	•	•	•	•	•	•	•	•	•

	COMPATIBLE MODULE REQUIRED:	QR CODE ON THE LABEL MANUFACTURED AFTER: 2019	FIRMWARE VERSION VERSION LOGICIELLE 85.[11] MINIMUM	To add the firmware version and the options, use the FLASH LINK UPDATER or FLASH LINK MOBILE tool, sold separately. Pour ajouter la version logicielle et les options, utilisez l'outil FLASH LINK UPDATER ou FLASH LINK MOBILE , vendu séparément.
	MODULE COMPATIBLE REQUIS:	CODE QR SUR L'ÉTIQUETTE FABRIQUÉ APRÈS: 2019		
	Program bypass option: Programmez l'option du contournement:		UNIT OPTION OPTION UNITÉ	DESCRIPTION
			C1	OEM Remote status (Lock/Unlock) monitoring Suivi des status (Verrouillage/Déverrouil- lage) de la télécommande d'origine
	D6	Push-to-Start Push-to-Start		
		E4	SPECIAL FUNCTIONS: Advanced keyless entry system FONCTION SPECIALE: Système de télédéverrouillage intelligent	
If equipped with an Advanced keyless entry lock/unlock on door handle. Si équipé d'un Système de télédéverrouillage intelligent au contact de la poignée de la porte.			A11	OFF NON
		Contact de capot (état de sortie).		
	Program bypass option: Programmez l'option du contournement:		UNIT OPTION OPTION UNITÉ	DESCRIPTION
			A3	OFF NON

MANDATORY INSTALL

MANDATORY INSTALL					Notice: the installation of safety elements are mandatory. The hood pin is an essential security element and must be installed.	THIS MODULE MUST BE INSTALLED BY A QUALIFIED TECHNICIAN. A WRONG CONNECTION CAN CAUSE PERMANENT DAMAGE TO THE VEHICLE.
* HOOD PIN		HOOD STATUS: THE HOOD PIN SWITCH MUST BE INSTALLED IF THE VEHICLE CAN BE REMOTE STARTED WITH THE HOOD OPEN, SET FUNCTION A11 TO OFF.	A11	OFF NON		

NOTES

TO COMPLETE THE INSTALLATION EITHER USE ONE OF THE EXISTING KEYS OR ORDER A NEW KEY.



Parts required (Not included)


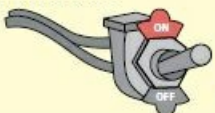
- 1X Vehicle key
- 1X Fuse
- 2X 1 Amp Diode
- 1X Relay

- 1X Relay for Advanced keyless entry



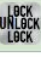


This guide may change without notice. See www.fortin.ca for the latest version.

PARTS REQUIRED (NOT INCLUDED)




Notice: the installation of safety elements are mandatory. The hood pin and the valet switch are essential security elements and must be installed.

<p>1x FLASH LINK UPDATER, 1x FLASH LINK MANAGER SOFTWARE PROGRAMME 1x Microsoft Windows Computer with Internet connection Ordinateur Microsoft Windows avec connection Internet</p>	OR OU	<p>1x FLASH LINK MOBILE 1x FLASH LINK MOBILE APP Smartphone Android or iOS with Internet connection (provider charges may apply).</p>	<div style="background-color: red; color: white; padding: 5px; text-align: center;">MANDATORY</div> <div style="display: flex; justify-content: space-around; align-items: center;"> <div style="text-align: center;"> <p>HOOD PIN CONTACT DE CAPOT</p>  </div> <div style="text-align: center;"> <p>REMOTE START SAFETY OVERRIDE SWITCH VALET SWITCH COMMUTATEUR VALET</p>  </div> </div> <p style="background-color: #f0f0f0; padding: 5px; text-align: center;">Part #: RSPB available, Sold separately.</p>
---	------------------	---	---

STAND ALONE CONFIGURATION

	Program bypass option OEM Remote Stand Alone Remote Starter:	UNIT OPTION OPTION UNITE	DESCRIPTION
		OR OU D1.10  D1.1 	By default, LOCK, LOCK, LOCK Par défaut, VERROUILLE, VERROUILLE, VERROUILLE
	Program bypass option with oem remote:	UNIT OPTION OPTION UNITE	DESCRIPTION
		C1	OEM Remote Monitoring
	Program bypass option with RF KIT antenna:	UNIT OPTION OPTION UNITE	DESCRIPTION
		H1 to H6 H1 à H6	Supported RF Kits and select RF Kit

REMOTE STARTER FUNCTIONALITY

 All doors must be closed. Toutes les portes doivent être fermées	<div style="font-size: 2em; font-weight: bold;">3X</div>   Press the OEM remote's Lock button 3x to remote-start (or remote-stop) the vehicle. Appuyez sur le bouton Verrouillage 3X de la télécommande d'origine pour démarrer à distance (ou arrêter à distance) le véhicule.	<div style="border: 1px solid gray; padding: 5px; display: inline-block;">START</div> The vehicle will START. Le véhicule DÉMARRE.	<div> REMOTE STARTER DIAGNOSTICS DIAGNOSTIQUE DU DÉMARREUR À DISTANCE </div> <div style="background-color: #cccccc; font-weight: bold; text-align: center; font-size: 0.8em;">MODULE RED LED / DEL ROUGE DU MODULE</div> <table style="width: 100%; font-size: 0.9em;"> <tr> <td style="width: 50%;">x2 flash : Brake ON</td> <td style="width: 50%;">Frein Activé</td> </tr> <tr> <td>x3 flash : No tach</td> <td>Pas de Tach</td> </tr> <tr> <td>x4 flash : Ignition before start</td> <td>Clé de contact détectée avant démarrage</td> </tr> <tr> <td>x5 flash : Hood Open</td> <td>Capot Ouvert</td> </tr> </table>	x2 flash : Brake ON	Frein Activé	x3 flash : No tach	Pas de Tach	x4 flash : Ignition before start	Clé de contact détectée avant démarrage	x5 flash : Hood Open	Capot Ouvert
x2 flash : Brake ON	Frein Activé										
x3 flash : No tach	Pas de Tach										
x4 flash : Ignition before start	Clé de contact détectée avant démarrage										
x5 flash : Hood Open	Capot Ouvert										

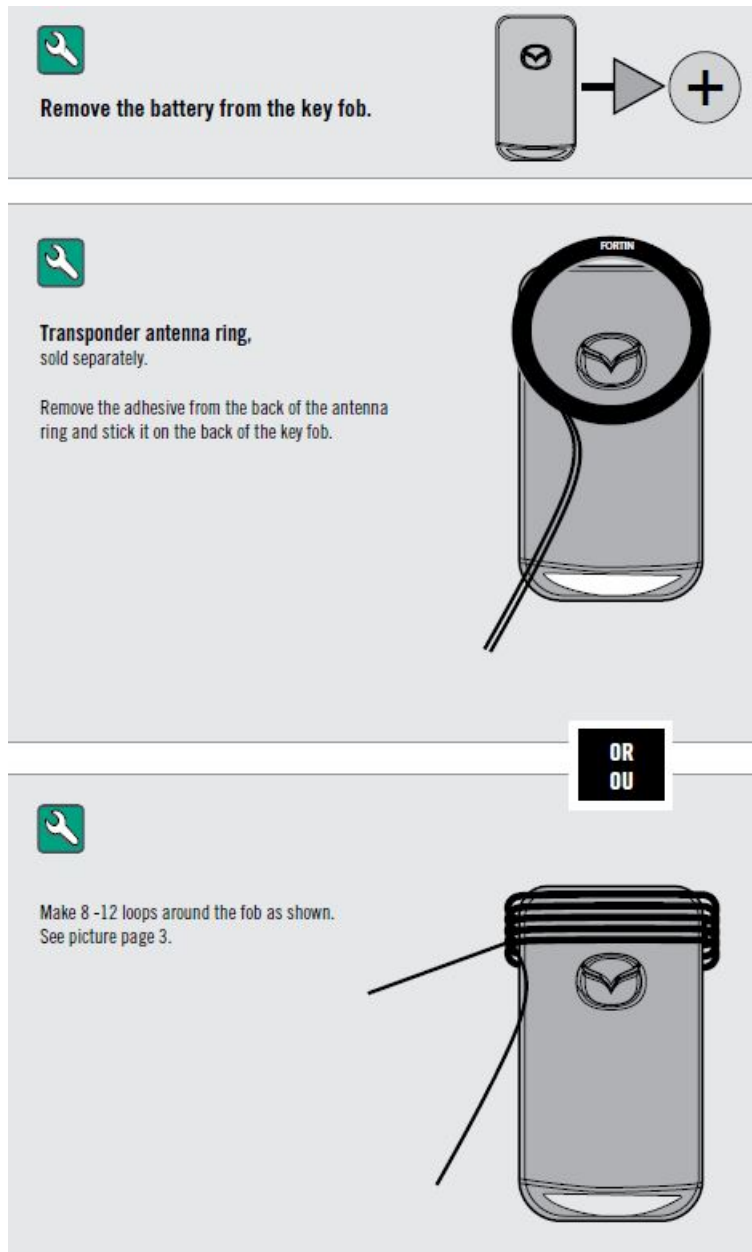
REMOTE STARTER WARNING CARD

- CUT THIS WARNING CARD AND STICK IT ON A VISIBLE PLACE: or use the package RSPB, Sold separately.

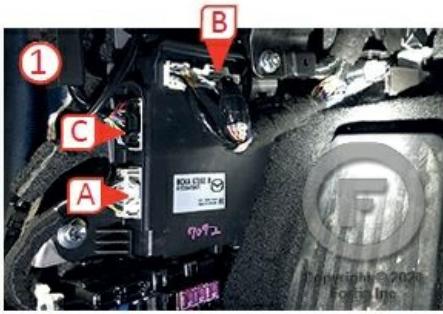
WARNING

THE VEHICLE CAN BE STARTED BY EITHER: PRESSING THE LOCK BUTTON ON THE OEM REMOTE 3 TIMES CONSECUTIVELY OR BY A SMARTPHONE. TURN ON THE SAFETY SWITCH LOCATED UNDER THE DASHBOARD BEFORE WORKING ON THE VEHICLE.

KEY CONTROL



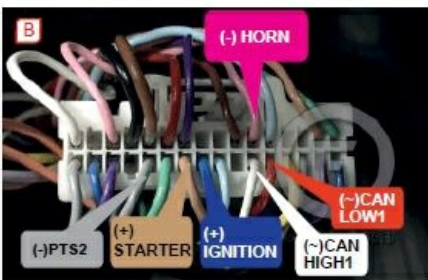
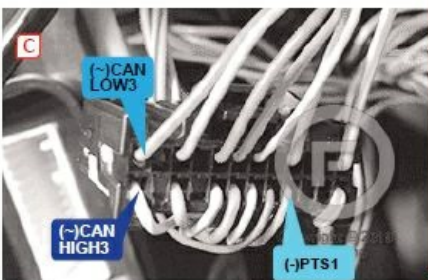
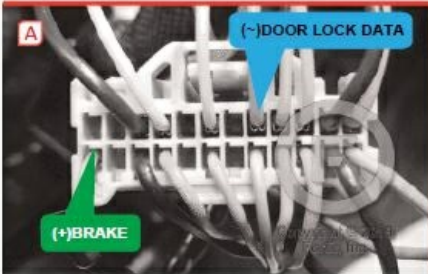
DESCRIPTION



① At Driver kick panel
Au Panneau latérale côté conducteur

③ At parking lights switch.
Au commutateur des feux de stationnement.

② OBDII connector
Connecteur OBDII



AUTOMATIC TRANSMISSION WIRING CONNECTION

Parts required (not included)

- 1x **FLASH LINK UPDATER**
- 1x **FLASH LINK MANAGER**

SOFTWARE | PROGRAMME

Microsoft Windows Computer with Internet connection
Ordinateur Microsoft Windows avec connection Internet

**OR
OU**

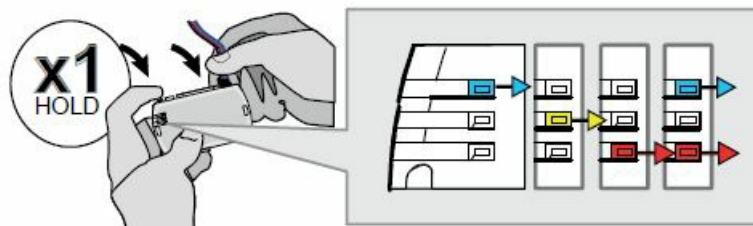
FLASH LINK MOBILE

FLASH LINK MOBILE APP

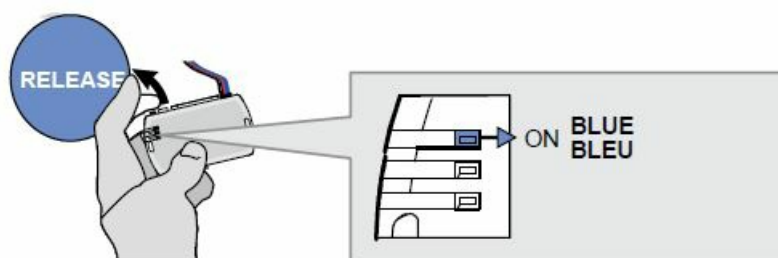
Smartphone Android or iOS with Internet connection
(Internet provider charges may apply)
Téléphone Intelligent Android ou iOS avec connection Internet
(des frais de fournisseur Internet peuvent s'appliquer)

BEFORE PROGRAMMING SET THE UNIT OPTIONS AND SAVE. | AVANT LA PROGRAMMATION CONFIGURER LES OPTIONS DE L'UNITÉ ET SAUVEGARDER.

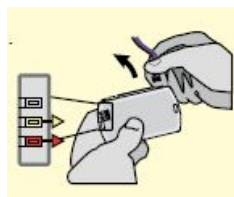
- Press and hold the programming button: Connect the 4-pin Data-link connector.
- The BLUE, RED, YELLOW and BLUE & RED LEDs will alternatively illuminate.



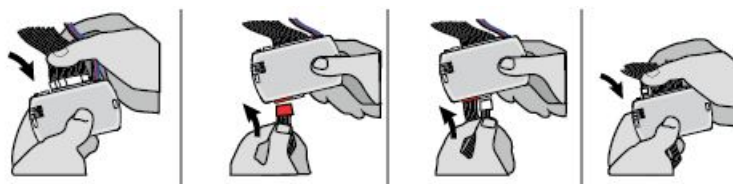
- Release the programming button when the LED is BLUE.



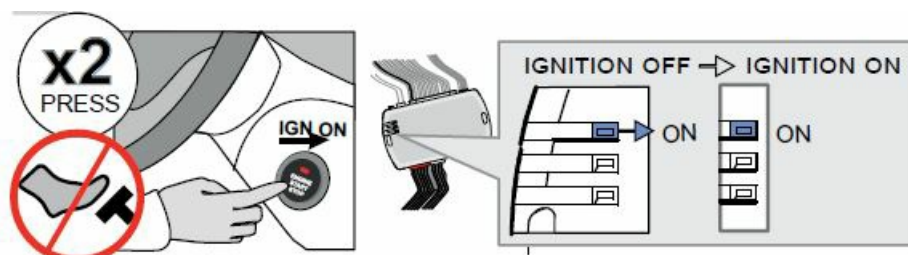
- If the LED is not solid BLUE disconnect the 4-Pin connector (Data-Link) and go back to step 1.



- Insert the required remaining connectors.



- Do not press the brake pedal.
- Press the Push-to-Start button twice to turn on the ignition.

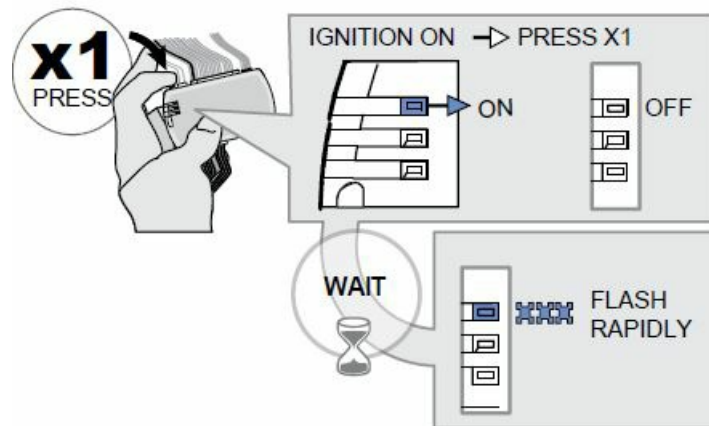


- Press and release the programming button once (1x).

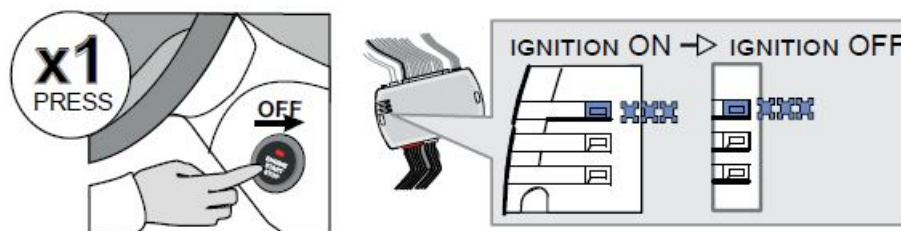
- The BLUE LED will turn off.

Wait,

- The BLUE LED will flash rapidly.



- Press the Push-to-Start button once to turn off the ignition.
- The BLUE LED will flash rapidly.

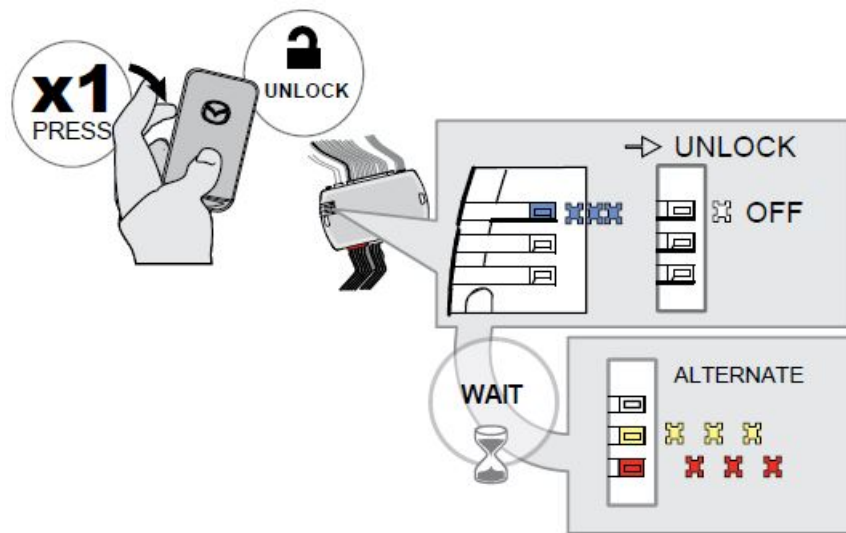


KEY BYPASS PROGRAMMING PROCEDURE 2/2

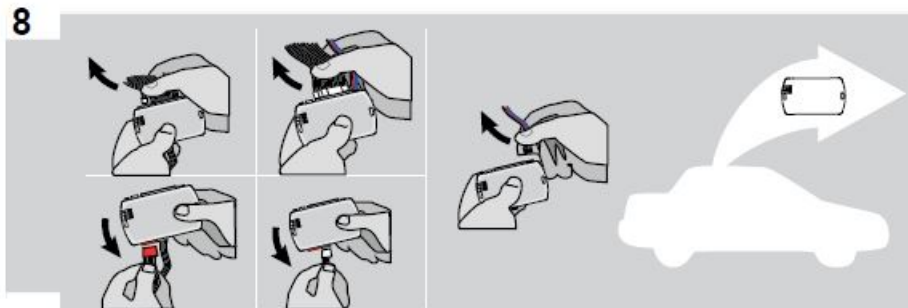
- Unlock the doors with the OEM remote.
- The BLUE LED will turn off.

Wait,

- The RED and YELLOW LEDs will alternated.

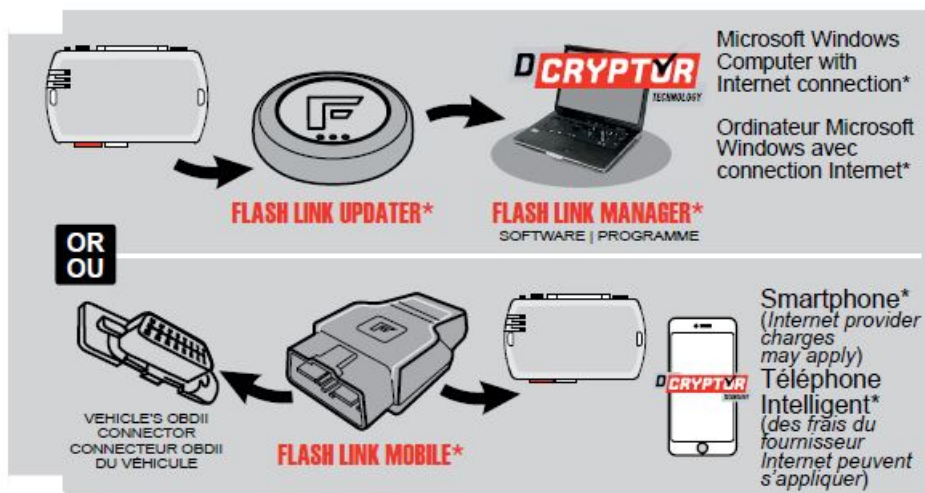


- Disconnect all the connectors and after the Data-Link (4-pins) connector.



Use the tool

- FLASH LINK UPDATER or FLASH LINK MOBILE to visit the DCryptor menu.
- Parts required (not included)
- AFTER DCRYPTOR PROGRAMMING COMPLETED Go back to the vehicle and reconnect the 4-Pin (Data-Link) connector and after, all the remaining connectors.





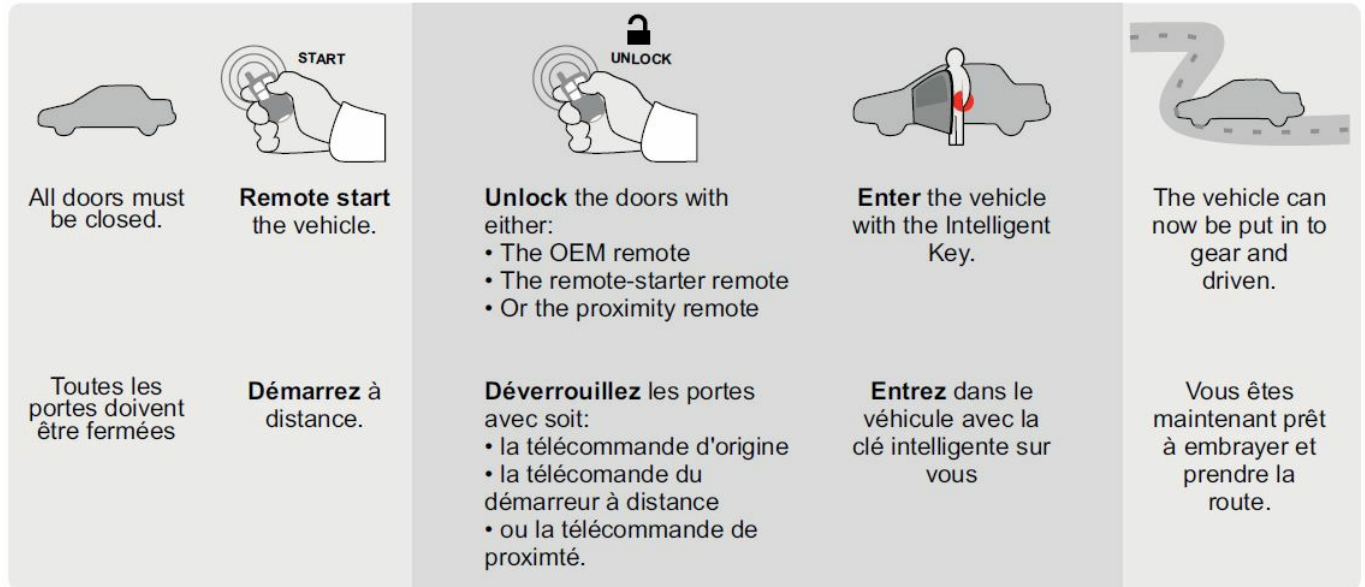
The module is now programmed.



REMOTE STARTER / ALARM VERIFICATION PROCEDURE

Test the remote starter. Remote start the vehicle.

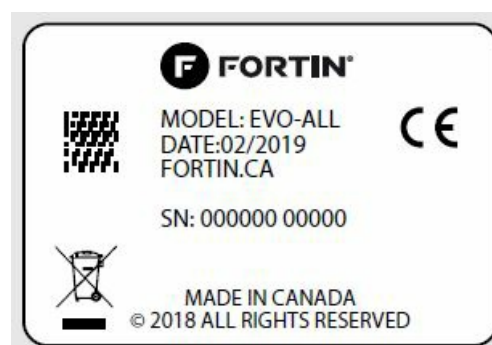
REMOTE STARTER FUNCTIONALITY



If the vehicle is not unlocked with one of these conditions the remote-starter will shut down as soon as any door is opened.

Notice: Updated Firmware and Installation Guides

Updated firmware and installation guides are posted on our website regularly. We recommend that you update this module to the latest firmware and download the latest installation guide(s) before the installation of this product.



WARNING

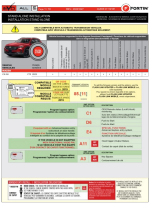
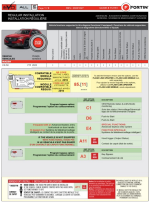
The information on this sheet is provided on an (as is) basis with no representation or warranty of accuracy whatsoever. It is the sole responsibility of the installer to check and verify any circuit before connecting to it. Only a computer-safe logic probe or digital multimeter should be used. FORTIN ELECTRONIC SYSTEMS assumes absolutely no liability or responsibility whatsoever for the accuracy or currency of the information supplied. The installation in every case is the sole responsibility of the installer performing the work and FORTIN ELECTRONIC SYSTEMS assumes no liability or responsibility whatsoever resulting from any type of installation, whether performed properly, improperly or in any other way. Neither the manufacturer nor distributor of this module is responsible for damages of any kind indirectly or directly caused by this module, except for the replacement of this module in case of manufacturing defects. This module must be installed by a qualified technician. The information supplied is a guide only. This instruction guide may change without notice. Visit www.fortinbypass.com to get

the latest version.

CONTACT

- TECH SUPPORT
- Tél: 514-255-HELP (4357)
- 1-877-336-7797
- www.fortinbypass.com

Documents / Resources

	FORTIN 2023 Push To Start Remote Starters and Alarm Systems [pdf] Installation Guide 112181, 2023, 2023 Push To Start Remote Starters and Alarm Systems, Push To Start Remote Starters and Alarm Systems, Start Remote Starters and Alarm Systems, Remote Starters and Alarm Systems, Starters and Alarm Systems, Alarm Systems, Systems
	FORTIN 2023 Push To Start Remote Starters and Alarm Systems [pdf] Installation Guide 2023, 2023 Push To Start Remote Starters and Alarm Systems, Push To Start Remote Starters and Alarm Systems, Start Remote Starters and Alarm Systems, Remote Starters and Alarm Systems, Starters and Alarm Systems, Alarm Systems, Systems

References

- [Remote Car Starters, Car Alarms, Immobilizer Bypass and Connected Vehicle Solutions | Fortin Electronic Systems](#)
- INTERNETfortinbypass.com
- [Remote Car Starters, Car Alarms, Immobilizer Bypass and Connected Vehicle Solutions | Fortin Electronic Systems](#)
- [Remote Car Starters, Car Alarms, Immobilizer Bypass and Connected Vehicle Solutions | Fortin Electronic Systems](#)
- [User Manual](#)