



FORTIN 2023 Cadillac CT5 Push Button Remote Starters and Alarm Systems Installation Guide

[Home](#) » [FORTIN](#) » FORTIN 2023 Cadillac CT5 Push Button Remote Starters and Alarm Systems Installation Guide 

FORTIN 2023 Cadillac CT5 Push Button Remote Starters and Alarm Systems Installation Guide



Contents

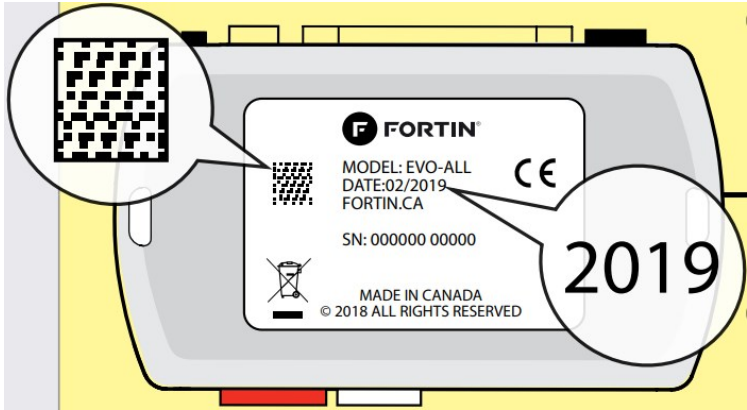
- [1 REGULAR INSTALLATION](#)
- [2 NOTES](#)
- [3 MANDATORY INSTALL](#)
- [4 DESCRIPTION](#)
- [5 DESCRIPTION](#)
- [6 WIRING CONNECTION](#)
- [7 PROGRAMMING](#)
- [PROCEDURE](#)
- [8 FUNCTIONS](#)
- [9 Documents / Resources](#)
- [10 Related Posts](#)

REGULAR INSTALLATION



Vehicle functions supported in this diagram (functional if equipped)	
Key Control	•
Lock	•
Unlock	•
Disarm	•
Parking Light	•
Trunk (open)	•
RAP Disable	•
Tachometer	•
Door Status	•
Trunk Status	•
Hand-Brake Status	•
Foot-Brake Status	•
OEM Remote Monitoring	•

COMPATIBLE: QR CODE ON THE LABEL
MODULE: MANUFACTURED AFTER: 2019
REQUIRED:



Program bypass option:



IF THE VEHICLE IS NOT EQUIPPED

WITH FUNCTIONAL HOOD PIN:
D'UN CONTACT DE CAPO CONNECTION:

UNIT OPTION OPTION UNITE		DESCRIPTION
C1		OEM Remote status (Lock/Unlock) monitoring
		Suivi des status (Verrouillage/Déverrouillage) de la télécommande d'origine
D6		Push-to-Start
		Push-to-Start
A11	OFF NON	Hood trigger (Output Status).
		Contact de capot (état de sortie).



Parts required (Not included)

- **1x Vehicle Key**
- 1x ARE-1R0
- 1x 1 Amp. Diode
- 1x 1.5 K Ohm resistor
- 1x 7.5 Amp. Fuse

NOTES



1 KEY REQUIRED FOR THE INSTALLATION

MANDATORY INSTALL



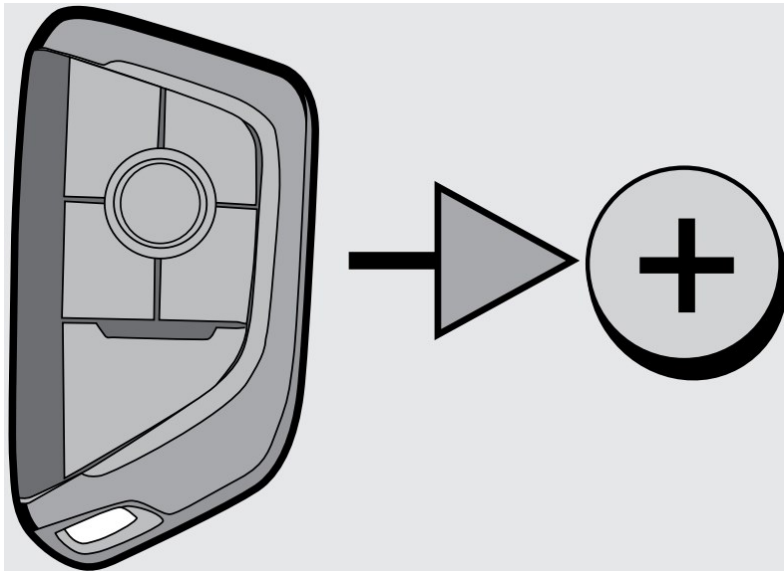
*** HOOD PIN HOOD STATUS :** THE HOOD PIN SWITCH MUST BE INSTALLED IF THE VEHICLE CAN BE REMOTE STARTED WITH THE HOOD OPEN, SET FUNCTION A11 TO OFF.

Notice: the installation of safety elements are mandatory. The hood pin is an essential security element and must be installed.

THIS MODULE MUST BE INSTALLED BY A QUALIFIED TECHNICIAN. A WRONG CONNECTION CAN CAUSE PERMANENT DAMAGE TO THE VEHICLE.

DESCRIPTION

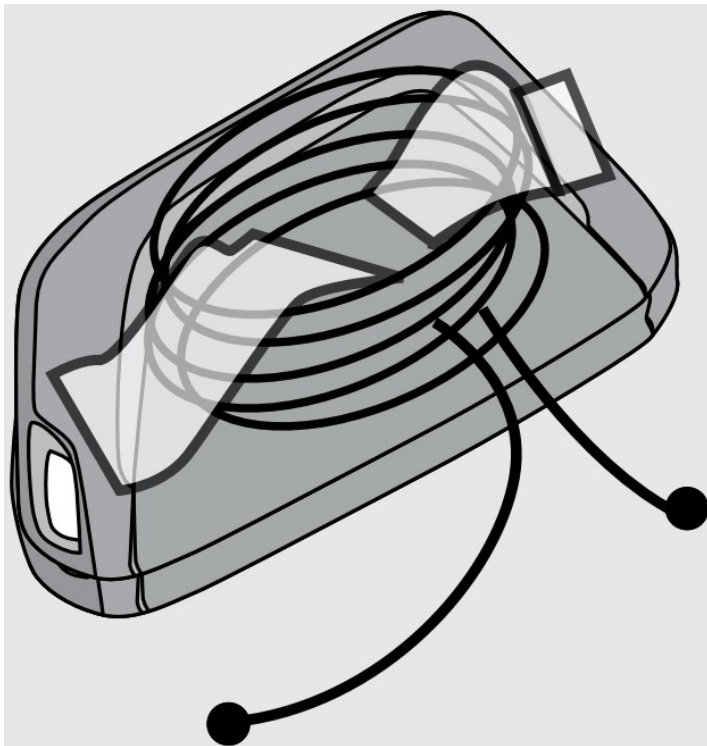
Remove the battery from the key fob.



This installation is easier with a transponder antenna* (*Part #: ARE-1R0, Sold separately).



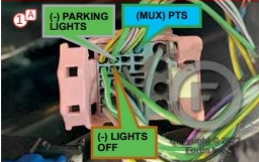
Make 5 to 10 loops with a 22 gauge wire on the back of the key fob.



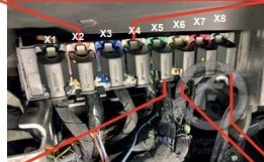
DESCRIPTION



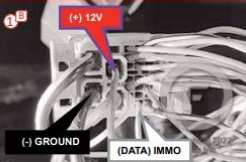
X2 Pink connector
Connecteur Rose X2



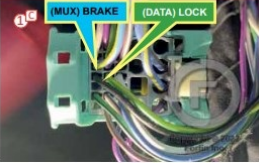
① BCM, behind glovebox



X4 Gray connector
Connecteur Gris X4



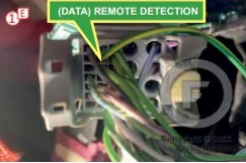
X5 Green connector
Connecteur Vert X5



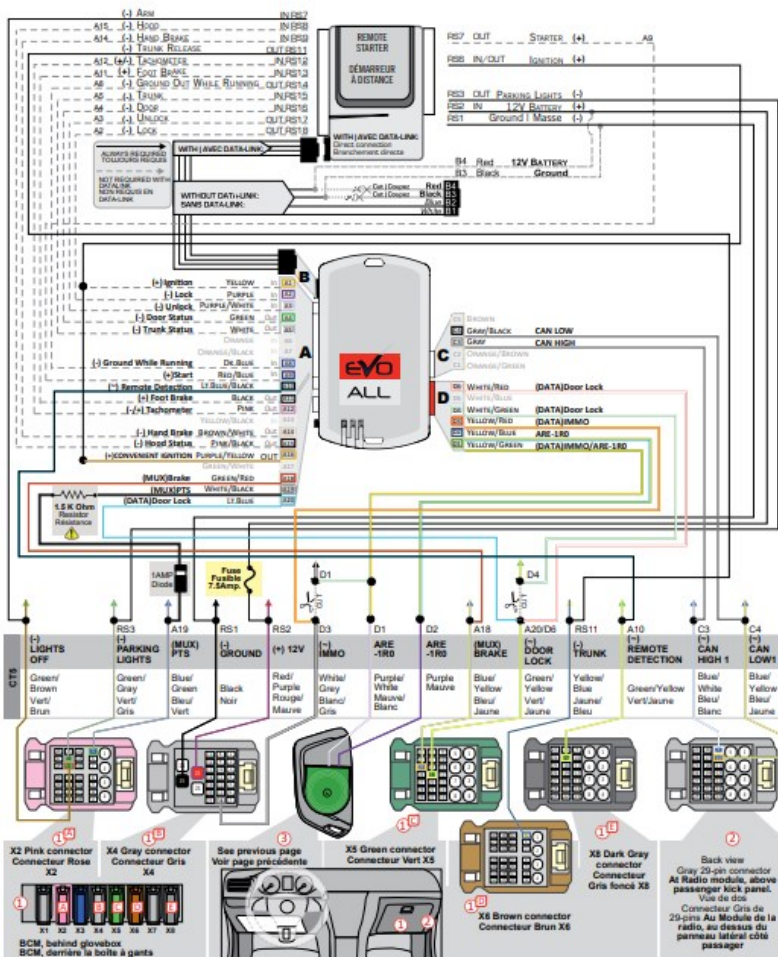
X6 Brown connector
Connecteur Brun X6



X8 Dark Gray connector
Connecteur Gris foncé X8

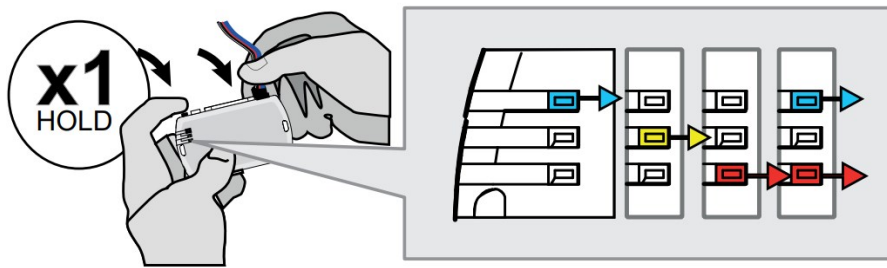


WIRING CONNECTION

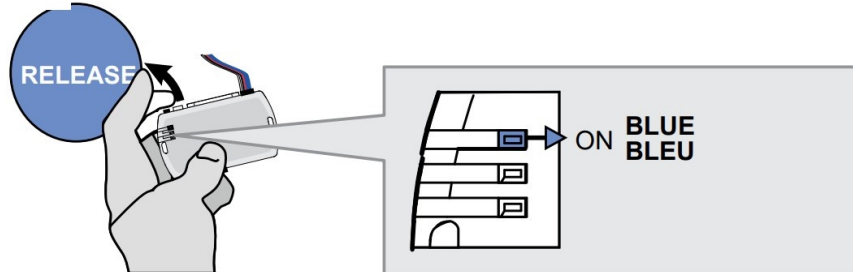


PROGRAMMING PROCEDURE

Press and hold the programming button: Connect the 4-Pin Data-link connector. The BLUE, RED, YELLOW and BLUE & RED LEDs will alternatively illuminate.

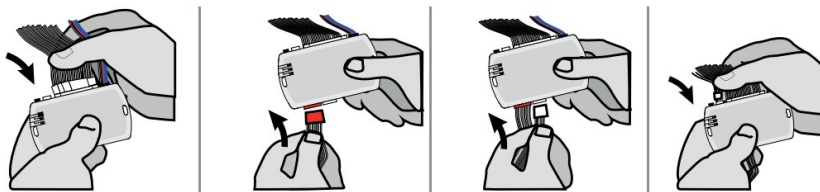


Release the programming button when the LED is

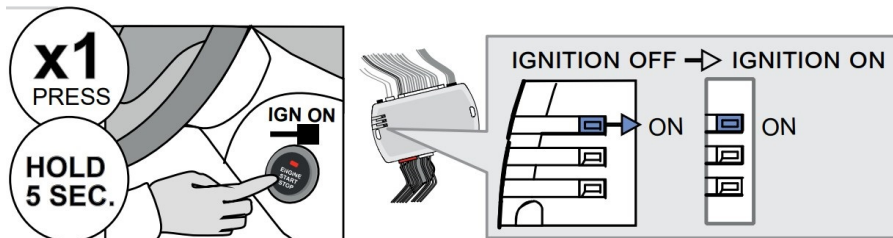


If the LED is not solid BLUE disconnect the 4-Pin connector (Data-Link) and go back to step 1.

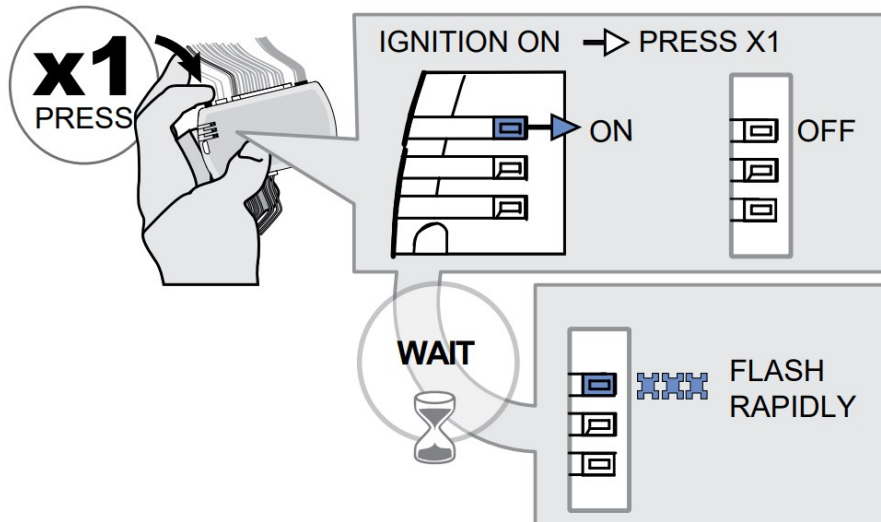
Insert the required remaining connectors.



Press and hold the Push-to-Start button until the ignition turn ON.

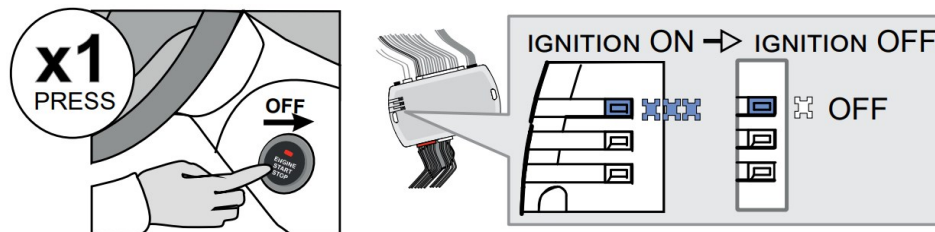


Press and release the programming button once (1x).



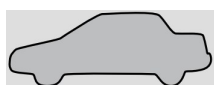
Press the Push-to-Start button once to turn off the ignition.

The BLUE LED will turn off.

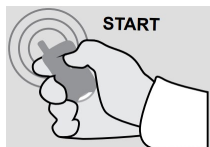


The module is now programmed.

FUNCTIONS



All doors must be closed.



Remote start the vehicle.

Unlock the doors with either:

- the remote-starter remote
- the proxy remote.



Enter the vehicle with the SMART-KEY.



Press the brake pedal.

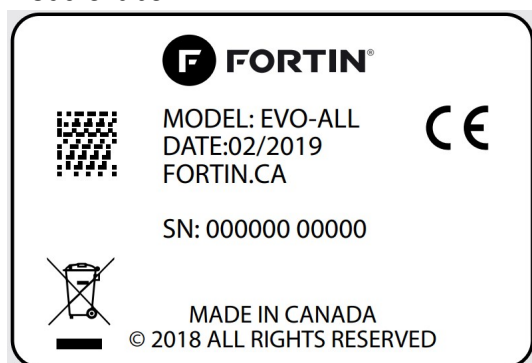


The vehicle can now be put in to gear and driven.



The engine will shutdown when a door is open if the vehicle is not Unlock.

Module label



Notice: Updated Firmware and Installation Guides.

Updated firmware and installation guides are posted on our web site on a regular basis. We recommend that you update this module to the latest firmware and download the latest installation guide(s) prior to the installation of this product.

WARNING

The information on this sheet is provided on an (as is) basis with no representation or warranty of accuracy whatsoever. It is the sole responsibility of the installer to check and verify any circuit before connecting to it. Only a computer safe logic probe or digital multimeter should be used. FORTIN ELECTRONIC SYSTEMS assumes absolutely no liability or responsibility whatsoever pertaining to the accuracy or currency of the information supplied. The installation in every case is the sole responsibility of the installer performing the work and **FORTIN ELECTRONIC SYSTEMS** assumes no liability or responsibility whatsoever resulting from any type of installation, whether performed properly, improperly or any other way. Neither the manufacturer or distributor of this module is responsible of damages of any kind indirectly or directly caused by this module, except for the replacement of this module in case of manufacturing defects. This module must be installed by qualified technician. The information supplied is a guide only. This instruction guide may change without notice. Visit www.fortinbypass.com to get the latest version.

www.fortinbypass.com

WEB UPDATE



Documents / Resources



[FORTIN 2023 Cadillac CT5 Push Button Remote Starters and Alarm Systems](#) [pdf] Installation Guide

EVO-ALL, CT5 2020-2023, 2023, 2023 Cadillac CT5 Push Button Remote Starters and Alarm Systems, Cadillac CT5 Push Button Remote Starters and Alarm Systems, CT5 Push Button Remote Starters and Alarm Systems, Push Button Remote Starters and Alarm Systems, Remote Starters and Alarm Systems, Starters and Alarm Systems, Alarm Systems, Systems

[Manuals+](#).