



FORTIN 2005 Standard Key Remote Starters and Alarm Systems Installation Guide

[Home](#) » [FORTIN](#) » FORTIN 2005 Standard Key Remote Starters and Alarm Systems Installation Guide 

Contents

- [1 FORTIN 2005 Standard Key Remote Starters and Alarm Systems](#)
- [2 Product Information](#)
- [3 Product Usage Instructions](#)
- [4 REGULAR INSTALLATION](#)
- [5 WIRING CONNECTION](#)
- [6 PROGRAMMING PROCEDURE](#)
- [7 REMOTE STARTER FUNCTIONALITY](#)
- [8 Documents / Resources](#)
- [9 Related Posts](#)



FORTIN 2005 Standard Key Remote Starters and Alarm Systems



Product Information

The product is an immobilizer bypass module designed for Toyota Land Cruiser vehicles from 2003 to 2005. It allows for functions such as bypassing the immobilizer, remote locking and unlocking, arming and disarming the vehicle, monitoring the status of the parking lights, hood, and foot-brake. The firmware version of the module is 79.[51]. The installation of safety elements, including the hood pin switch, is mandatory for proper functioning and security. It is important to note that the module must be installed by a qualified technician to avoid any wrong connections that could cause permanent damage to the vehicle.

Product Usage Instructions

1. Ensure that the hood pin switch is installed if the vehicle can be remote started with the hood open. The hood pin is an essential security element and must be installed.
2. Refer to the wiring connection guide for proper installation:
 - Connect the (-) hood wire to RS8.
 - Connect the (+/-) tachometer wire to RS12.
 - Connect the (+) foot brake wire to RS13.
 - Connect the A8 (-) ground out while running wire to RS14.
 - Connect the (-) unlock wire to RS17.
 - Connect the (-) lock wire to RS18.
 - If using data-link, always connect as required.
 - If not using data-link, no connection is required.
 - Refer to the wiring diagram for further connections.
3. Insert the necessary connectors:
 - Insert the 20 pin (White) connector, 6 pin (Red) connector, 5 pin (White) connector, and 2 pin (White) connector if required.
 - Insert the 4-Pin (Data-Link) connector.
4. Press and hold the programming button to initiate programming.
5. Follow any additional programming instructions provided in the user manual for specific functions or customization.

During programming, the LEDs on the module will alternate between blue, yellow, and red flashes as an indication of the programming process.

REGULAR INSTALLATION

VEHICLE VEHICULES	YEARS ANNÉES	Vehicle functions supported in this diagram (functional if equipped) Fonctions du véhicule supportées dans ce diagramme (fonctionnelles si équipé)							
		Immobilizer bypass Contournement d'immobilisateur	Lock	Unlock	Arm	Disarm	Parking Lights	Hood Status*	Foot-Brake Status
TOYOTA Land Cruiser	Key 2003-2005	•	•	•	•	•	•	•	•



FIRMWARE VERSION
VERSION LOGICIELLE

79.[51]
MINIMUM

This manual may change without notice.
www.fortinbypass.com for latest version.
Ce Guide peut faire l'objet de changement
sans préavis. www.fortinbypass.com pour la
récente version.

MANDATORY INSTALL

* HOOD PIN

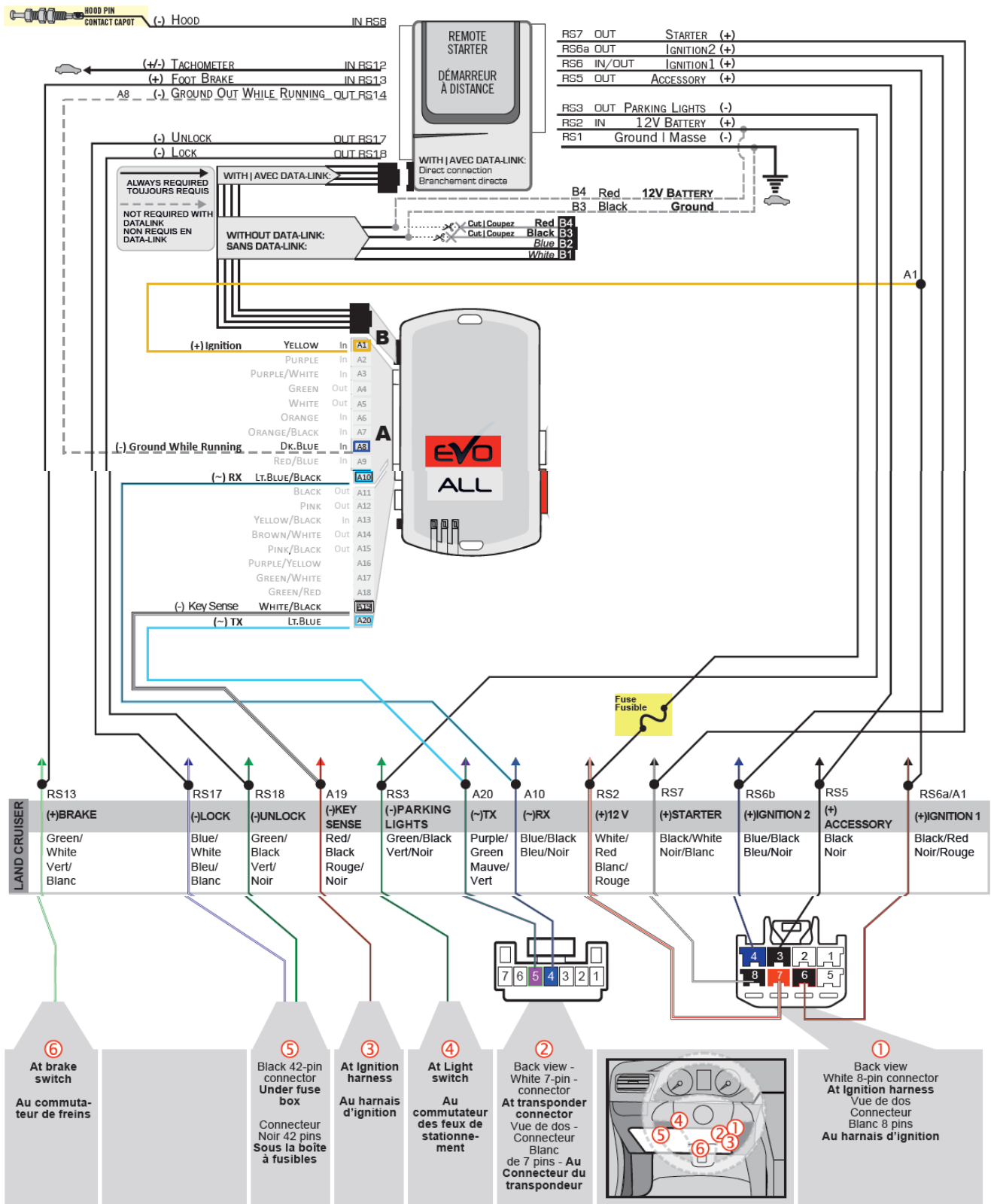
HOOD STATUS : THE HOOD PIN SWITCH MUST BE INSTALLED IF THE VEHICLE CAN BE REMOTE STARTED WITH THE HOOD OPEN, SET FUNCTION A11 TO OFF.



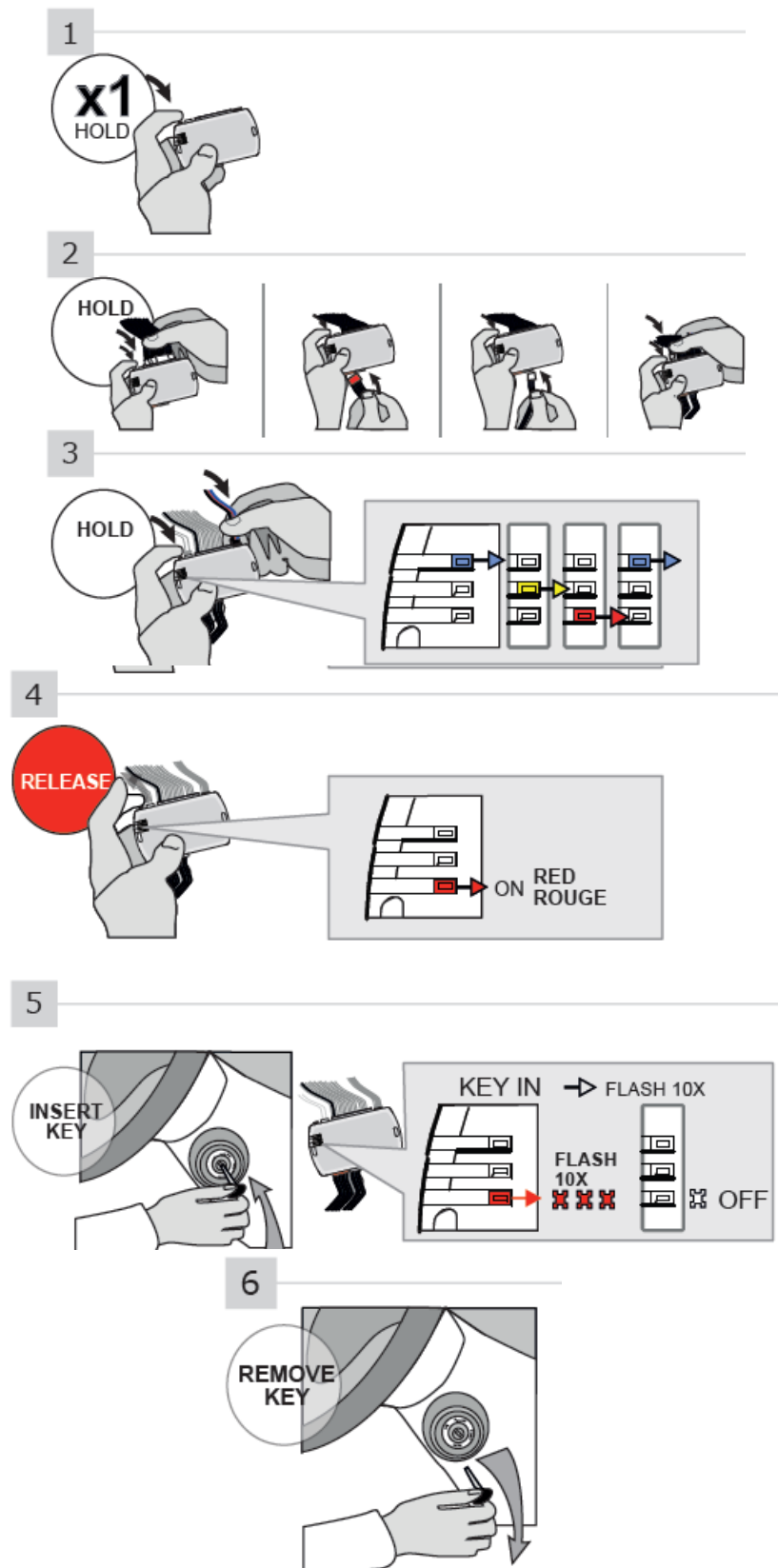
Notice: the installation of safety elements are mandatory. The hood pin is an essential security element and must be installed.

THIS MODULE MUST BE INSTALLED BY A QUALIFIED TECHNICIAN. A WRONG CONNECTION CAN CAUSE PERMANENT DAMAGE TO THE VEHICLE.

WIRING CONNECTION



PROGRAMMING PROCEDURE

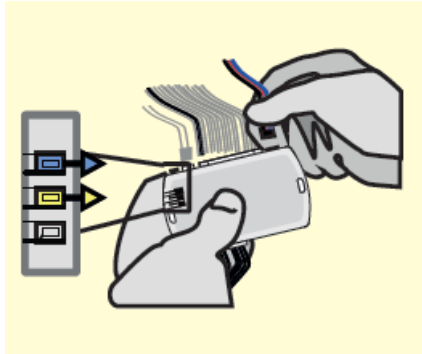


1. Press and hold the programming button.
2. Insert the connectors:
 - 20 pin (White),
 - 6 pin (Red),
 - 5 pin (White),
 - 2 pin (White).
 - (If required)
3. Insert the 4-Pin (Data-Link) connector.

The LEDs will alternate between BLUE, YELLOW and RED flashes

4. Release the programming button when the LED is RED.

If the LED is not solid RED disconnect the 4 Pin connector (Data-Link) and go back to step 1



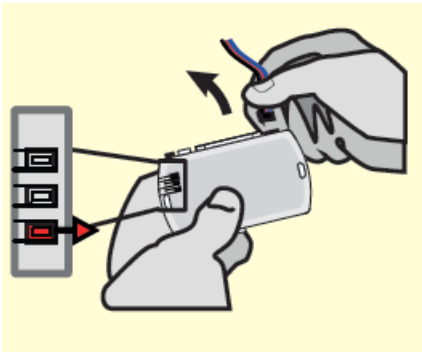
5. Insert one functional key into the ignition barrel

DO NOT turn ON the key.

The RED LED will flash rapidly 10x times.

Key bypass programmed.

If the LED is solid RED disconnect the 4 Pin connector (Data-Link) and go back to step 1.

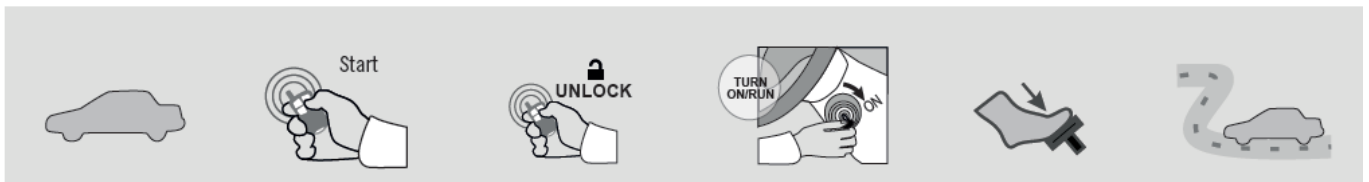


6. Remove the key from the Ignition barrel.

The module is now programmed.

Use the remote of the remote starter or security system to test all of the supported features to ensure proper programming

REMOTE STARTER FUNCTIONALITY



- All doors must be closed.
- Remote start the vehicle.
- Unlock the doors with the remote-starter remote or the OEM remote.
- Insert and Turn the key to the Ignition ON/RUN position.
- Press the brake pedal.
- The vehicle can now be put in to gear and driven.

Notice: Updated Firmware and Installation Guides

Updated firmware and installation guides are posted on our web site on a regular basis. We recommend that you update this module to the latest firmware and download the latest installation guide(s) prior to the installation of this product.

If the vehicle is not unlocked with one of these conditions the remote-starter will shut down as soon as any door is opened.

WARNING

The information on this sheet is provided on an (as is) basis with no representation or warranty of accuracy whatsoever. It is the sole responsibility of the installer to check and verify any circuit before connecting to it. Only a computer safe logic probe or digital multimeter should be used. FORTIN ELECTRONIC SYSTEMS assumes absolutely no liability or responsibility whatsoever pertaining to the accuracy or currency of the information supplied. The installation in every case is the sole responsibility of the installer performing the work and FORTIN

ELECTRONIC SYSTEMS assumes no liability or responsibility whatsoever resulting from any type of installation, whether performed properly, improperly or any other way. Neither the manufacturer or distributor of this module is responsible of damages of any kind indirectly or directly caused by this module, except for the replacement of this module in case of manufacturing defects. This module must be installed by qualified technician. The information supplied is a guide only. This instruction guide may change without notice. Visit www.fortinbypass.com to get the latest version.

Copyright © 2006-2018, FORTIN AUTO RADIO INC ALL RIGHTS RESERVED PATENT PENDING

TECH SUPPORT

Tél: 514-255-HELP (4357)

1-877-336-7797

ADDENDUM GUIDE

www.fortinbypass.com

WEB UPDATE

Documents / Resources



[FORTIN 2005 Standard Key Remote Starters and Alarm Systems](#) [pdf] Installation Guide
85131, 2005, 2005 Standard Key Remote Starters and Alarm Systems, Standard Key Remote Starters and Alarm Systems, Key Remote Starters and Alarm Systems, Remote Starters and Alarm Systems, Starters and Alarm Systems, Alarm Systems, Systems