



FORTIN 2004 Ford Thunderbird Regular Key Remote Starters and Alarm Systems Installation Guide

[Home](#) » [FORTIN](#) » FORTIN 2004 Ford Thunderbird Regular Key Remote Starters and Alarm Systems Installation Guide 

Contents

- [1 FORTIN 2004 Ford Thunderbird Regular Key Remote Starters and Alarm Systems](#)
- [2 Product Information](#)
- [3 Product Usage Instructions](#)
- [4 REGULAR INSTALLATION](#)
- [5 WIRING CONNECTION](#)
- [6 REMOTE STARTER PROGRAMMING PROCEDURE](#)
- [7 Documents / Resources](#)
 - [7.1 References](#)



FORTIN 2004 Ford Thunderbird Regular Key Remote Starters and Alarm Systems



Product Information

- Product Name: Thunderbird
- Model Year: 2002-2005
- Bypass Firmware Version: 71.[52]
- Minimum Firmware Version Requirement: To add the firmware version and options, use the FLASH LINK UPDATER or FLASH LINK MOBILE tool (sold separately).
- Program Bypass Option: If the vehicle is not equipped with a functional hood pin, set the UNIT OPTION to A11 (OFF).
- Program Remote Starter Option: Set the FUNCTION to 2.
- Parts Required (Not included): 1x Relay and 1x 1780K Ohm resistor.
- Mandatory Installation: The hood pin switch (included) must be installed if the vehicle can be remote started with the hood open. Set FUNCTION A11 to OFF.
- Security Sticker: Included. This module must be installed by a qualified technician. A wrong connection can cause permanent damage to the vehicle.

Product Usage Instructions


1. Wiring Connections:


- Yellow: Connect to AA11 (-)Lock
- Purple: Connect to AA22 (-)Unlock
- Purple/White: Connect to AA33
- Green: Connect to AA44
- White: Connect to AA55
- Orange: Connect to AA66
- Orange/Black: Connect to AA77
- Dk.Blue: Connect to AA88
- Red/Blue: Connect to AA99 In
- Lt.Blue/Black: Connect to AA1100 RX In/Out
- Black: Connect to AA1111 (+)Foot Brake
- Pink: Connect to AA1122 Out
- Yellow/Black: Connect to AA1133 (-)Trunk Release
- Brown/White: Connect to AA1144 In
- Pink/Black: Connect to AA1155 (-)Hood
- Purple/Yellow: Connect to AA1166 In/Out
- Green/White: Connect to AA1177 In/Out
- Green/Red: Connect to AA1188 In/Out
- White/Black: Connect to AA1199 Out
- Lt.Blue: Connect to AA2200 In/Out
- White Out: Connect to EE11
- Orange Out: Connect to EE22
- Red In: Connect to EE33
- Black In: Connect to EE44
- Pink In/Out: Connect to EE55

- Yellow Out: Connect to EE66
2. Cut Loop for Automatic Transmission Mode.
 3. Hood Pin Mandatory. Connect the following:
 - C5: Brown
 - C4: Gray/Black
 - C3: Gray
 - C2: Orange/Brown
 - C1: Orange/Green
 4. Connect the following PATS Ignition:
 - D6: White/Red
 - D5: White/Blue
 - D4: White/Green
 - D3: Yellow/Red
 - D2: Yellow/Blue
 - D1: Yellow/Green
 5. Connect the following Ground:
 - E5: D5 Fuse
 - E6: A4 1780K Ohm resistor
 6. Connect the following Trunk Release Lock:
 - A3: White/ Purple
 7. Connect the following Unlock Disarm:
 - A6: White/ Black
 8. Connect the following Brake:
 - A11: (+)
 9. Connect the following (MUX) Parking Lights:
 - A12: White/ Green
 10. Connect the following RX:
 - A10: Grey/ Red
 11. Connect the following TX:
 - A20: White/ Red
 12. Connect the following (+) Ignition and Starter:
 - D6: Orange/ Blue
 13. Connect the following 12V:
 - E3: Red
 14. Connect the following (+) Accessory1:
 - E2: Pink/ White
 15. Connect the following (+) Accessory2:
 - E1: Yellow

REGULAR INSTALLATION

Vehicle functions supported in this diagram (functional if equipped)

		Vehicle functions supported in this diagram (functional if equipped)									
											
VEHICLE	YEARS	2KEY Programming	1KEY Programming	Immobilizer bypass	Lock	Unlock	Disarm	Parking Light	Hood Status*	Foot-Brake Status	
FORD											
Thunderbird	2002-2005	1	2	•	•	•	•	•	•	•	





BYPASS FIRMWARE VERSION
VERSION LOGICIELLE CONTOURNEMENT


71.[52]

MINIMUM

To add the firmware version and the options, use the
FLASH LINK UPDATER or FLASH LINK MOBILE tool,
sold separately.

	Program bypass option IF THE VEHICLE IS NOT EQUIPPED WITH FUNCTIONAL HOOD PIN:	UNIT OPTION OPTION UNITE		DESCRIPTION
		A11	OFF NON	Hood trigger (Output Status).
				Contact de capot (état de sortie).

	Program remote starter option:	FUNCTION FONCTION	MODE	DESCRIPTION
		2	2	(+) Accessory 2 (E1)
				(+) Accessoire 2 (E1)
		20	2	Tachless only. (vehicles with automatic transmission only)



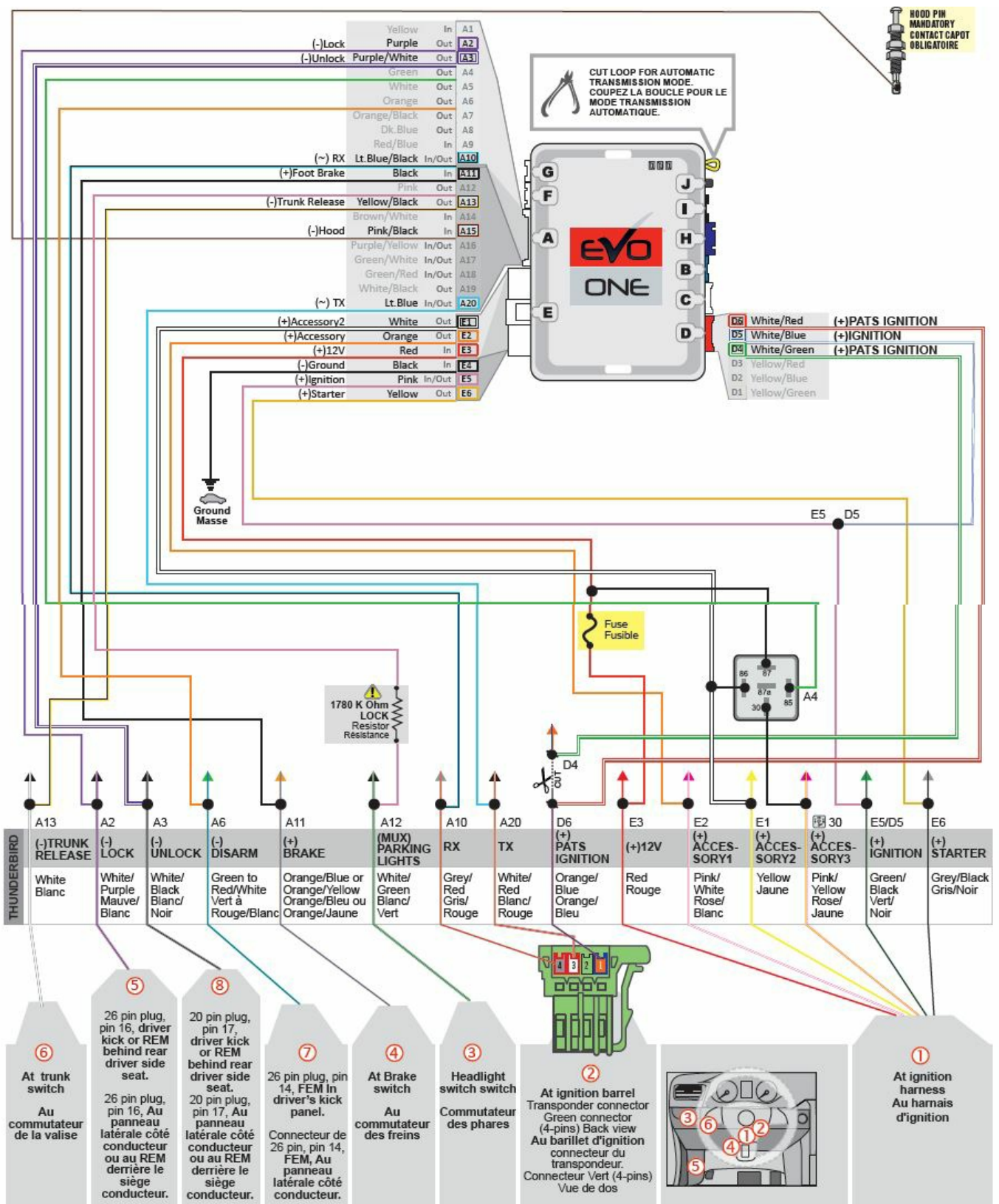
Parts required (Not included)

1x Relay
1x 1780K Ohm resistor

MANDATORY INSTALL

* HOOD PIN CONTACT DE CAPOT		HOOD STATUS : THE HOOD PIN SWITCH (INCLUDED) MUST BE INSTALLED IF THE VEHICLE CAN BE REMOTE STARTED WITH THE HOOD OPEN, SET FUNCTION A11 TO OFF.	A11 OFF NON	SECURITY STICKER  Included Inclus	Notice: the installation of safety elements are mandatory. The hood pin and the sticker are essential security elements and must be installed.	THIS MODULE MUST BE INSTALLED BY A QUALIFIED TECHNICIAN. A WRONG CONNECTION CAN CAUSE PERMANENT DAMAGE TO THE VEHICLE.

WIRING CONNECTION

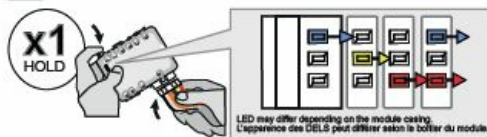


PROGRAM.1: 2 KEY PROGRAMMING PROCEDURE 1/2



2 KEY REQUIRED 2 CLÉS REQUISES

1



Press and hold the programming button:
Insert the 6-Pin Main connector.

↳ The LEDs will alternate between BLUE, RED, YELLOW & BLUE/RED flashes.

Appuyez et maintenir le bouton de programmation enfoncé:
Insérez le connecteur Principal à 6-broches.

↳ Les DELS alterneront entre un clignotement BLEU, ROUGE, JAUNE & BLEU/ROUGE.

2



Release the programming button when the LED is RED.

If the LED is not solid RED disconnect the 6 Pin connector (Main-Harness) and go back to step 1.

Relâchez le bouton de programmation quand la DEL est ROUGE.

Si le DEL n'est pas ROUGE solide débranchez le connecteur 6 pins (Connecteur principal) et allez à l'étape 1.



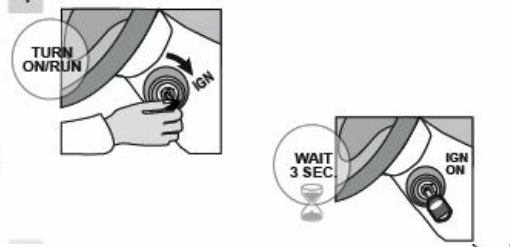
3



Insert the required remaining connectors.

Insérez les connecteurs requis restants.

4



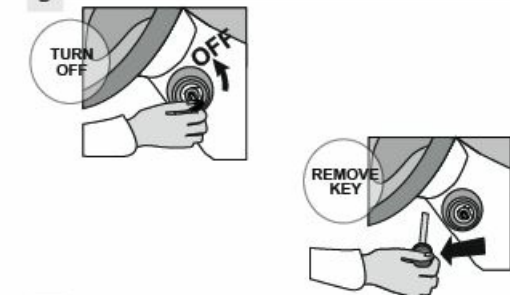
Turn the first functional key to the ON/RUN position.

Wait 3 seconds.

Tournez la première clé fonctionnelle à la position ON/RUN.

Attendez 3 secondes.

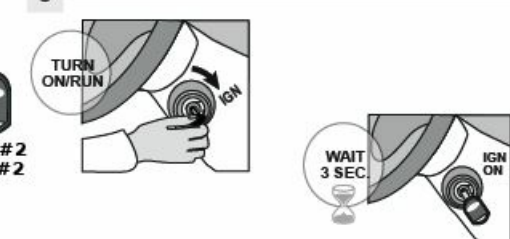
5



Turn the ignition to the OFF position
and remove the first key.

Tournez la clé à la position ARRÊT (OFF)
et retirez la clé du barillet.

6



Turn the second functional key to the ON/RUN position.

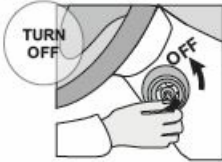
Wait 3 seconds.

Tournez la deuxième clé fonctionnelle à la position ON/RUN.

Attendez 3 secondes.

PROGRAM.1: 2 KEY PROGRAMMING PROCEDURE 2/2

7



Turn the ignition to the OFF position
and **remove** the second key.

Toumez la clé à la position
ARRÊT (OFF)
et **retirez** la clé du barillet.

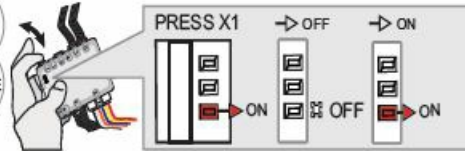
8



CAUTION The following step must be completed within 5 seconds.
Otherwise disconnect all connectors and go back to step 1.

5 sec. max

ATTENTION les prochaines étapes doivent être complétées en moins de 5 secondes.
Si non, débranchez tous les connecteurs et allez à l'étape 1.



Press and hold the programming button until the LED flashes once.

↳ The RED LED will flash once (1x).

Pesez et garder appuyé le bouton de programmation jusqu'à se que le DEL clignote une fois.

↳ La DEL ROUGE clignote 1 fois.

Release the programming button.

Relâchez le bouton de programmation.

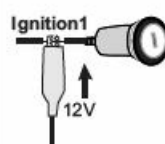
AUTOMATIC TRANSMISSION TRANSMISSION AUTOMATIQUE



Activate the remote starter.

Actionnez le démarreur à distance.

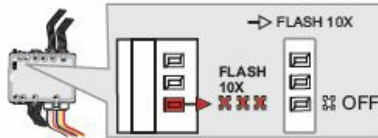
MANUAL TRANSMISSION TRANSMISSION MANUELLE



Using a jumper wire, apply power (12v) to the vehicle's ignition1.

À l'aide d'un fil (jumper) appliquez 12v sur l'ignition1 du véhicule.

9

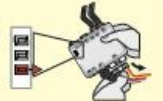


The RED LED will flash rapidly ten (10) times.

La DEL ROUGE clignotera dix (10) fois rapidement.

If the LED is solid RED disconnect the 4 Pin connector (Data-Link) and go back to step 1.

Si le DEL est ROUGE solide débranchez le connecteur 4 pins (Data-Link) et allez à l'étape 1.



Manual transmission:
Remove the jumper.

Transmission manuelle:
Retirez le fil (jumper).

The module is now programmed.

Use the remote of the remote starter or security system to test all of the supported features to ensure proper programming.

Le module est programmé.

Testez toutes les fonctions supportées sur le véhicule avec la télécommande du démarreur à distance ou du système de sécurité.

DCRYPTOR PROGRAMMING PROCEDURE



Parts required (not included)

- 1x **FLASH LINK UPDATER,**
- 1x **FLASH LINK MANAGER**
SOFTWARE | PROGRAMME
- 1x Microsoft Windows Computer with Internet connection
Ordinateur Microsoft Windows avec connection Internet

Pièces requises (non incluses)

OR
OU

- 1x **FLASH LINK MOBILE**
- 1x **FLASH LINK MOBILE APP**
- Smartphone Android or iOS with Internet connection
(Internet provider charges may apply)
Téléphone Intelligent Android ou iOS avec connection Internet (des frais du fournisseur Internet peuvent s'appliquer)

DCRYPTOR
TECHNOLOGY

BEFORE PROGRAMMING SET THE UNIT OPTIONS AND SAVE. | AVANT LA PROGRAMMATION CONFIGURER LES OPTIONS DE L'UNITÉ ET SAUVEGARDER.

1



Press and hold the programming button:
Insert the 6-Pin Main connector.

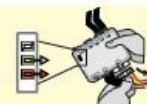
Appuyez et maintenir le bouton de programmation enfoncé:
Insérez le connecteur Principal à 6-broches.

↳ The LEDs will alternate between BLUE, RED, YELLOW & BLUE/RED flashes.

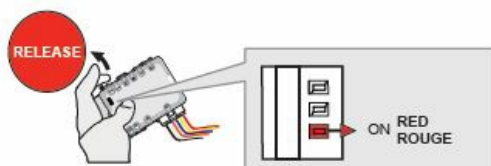
↳ Les DELs alterneront entre un clignotement BLEU, ROUGE, JAUNE & BLEU/ROUGE.

If the LED is not solid RED disconnect the 6 Pin connector (Main-Harness) and go back to step 1.

Si le DEL n'est pas ROUGE solide débranchez le connecteur 6 pins (Connecteur principal) et allez à l'étape 1.



2



Release the programming button when the LED is RED.

Relâchez le bouton de programmation quand la DEL est ROUGE.

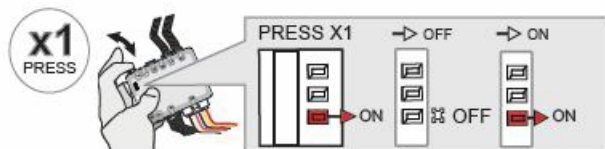
3



Insert the required remaining connectors.

Insérez les connecteurs requis restants.

4



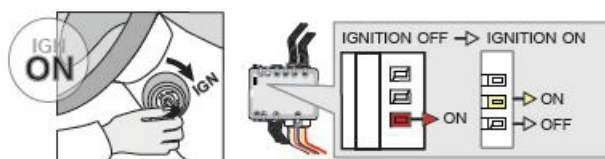
Press and release the programming button once (1x).

Appuyez et relâchez 1 fois le bouton de programmation.

↳ The RED LED will flash once.

↳ La DEL ROUGE clignote 1 fois.

5



Turn the key to the Ignition ON/RUN position.

Tournez la clé à Ignition.

↳ The RED LED will turn OFF.

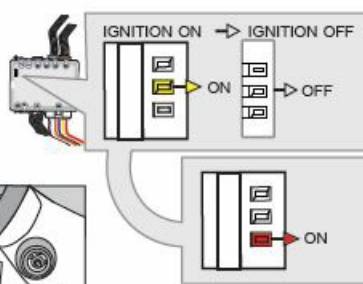
↳ La DEL ROUGE s'éteint.

↳ The YELLOW LED will turn on.

↳ La DEL JAUNE s'allume.

KEY BYPASS PROGRAMMING PROCEDURE 2/3

6



Turn the key to the OFF position
Remove the key from the
ignition barrel.

Fermez la clé de contact.
Retirer la clé du barillet
d'ignition.

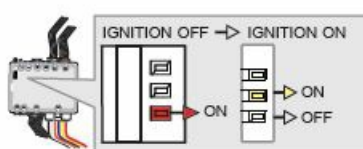
↳ The YELLOW LED will turn
OFF.

↳ La DEL JAUNE s'éteint.

↳ The RED LED will turn on.

↳ La DEL ROUGE s'allume.

7



Turn the key to the
Ignition ON/RUN position.

Tournez la clé à Ignition.

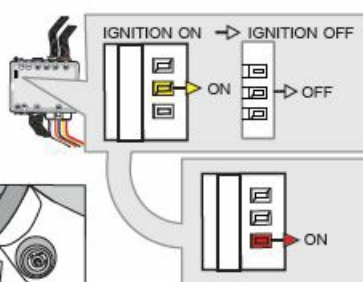
↳ The RED LED will turn OFF.

↳ La DEL ROUGE s'éteint.

↳ The YELLOW LED will turn on.

↳ La DEL JAUNE s'allume.

8



Turn the key to the OFF position
Remove the key from the
ignition barrel.

Fermez la clé de contact.
Retirer la clé du barillet
d'ignition.

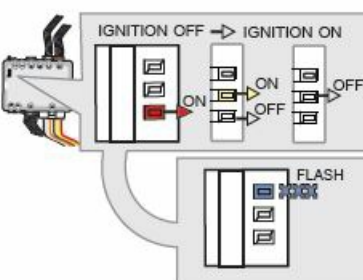
↳ The YELLOW LED will turn
OFF.

↳ La DEL JAUNE s'éteint.

↳ The RED LED will turn on.

↳ La DEL ROUGE s'allume.

9



Turn the key to the
Ignition ON/RUN position.

Tournez la clé à Ignition.

↳ The YELLOW LED will turn
on and off.

↳ La DEL JAUNE s'allume et
s'éteint.

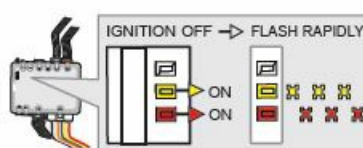
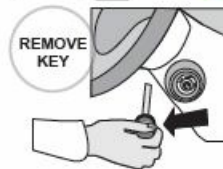
↳ The RED LED will turn OFF.

↳ La DEL ROUGE s'éteint.

↳ WAIT, the BLUE LED to flash
rapidly.

↳ ATTENDRE que la DEL
BLEUE clignote rapidement.

10



Turn the key to the OFF position
Remove the key from the
ignition barrel.

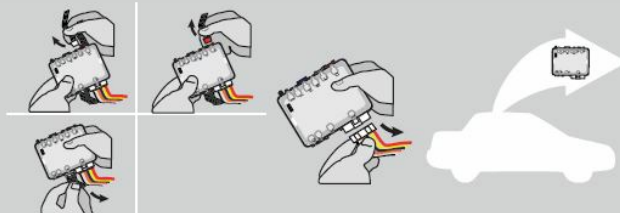
Fermez la clé de contact.
Retirer la clé du barillet
d'ignition.

↳ The RED and YELLOW LEDs
will alternate.

↳ La DEL ROUGE et JAUNE
alterneront.

KEY BYPASS PROGRAMMING PROCEDURE 3/3

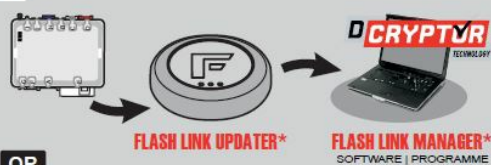
11



Disconnect all connectors and after the 6-Pin (Main-Harness) or the 4-Pin Data-link connector.

Débranchez tous les connecteurs et ensuite le connecteur 6-pins (Connecteur principal) ou le connecteur 4-pins (Data-Link).

12



Microsoft Windows
Computer with
Internet connection*

Ordinateur Microsoft
Windows avec
connection Internet*

OR
OU



VEHICLE'S OBDII
CONNECTOR
CONNECTEUR OBDII
DU VEHICULE

FLASH LINK MOBILE*

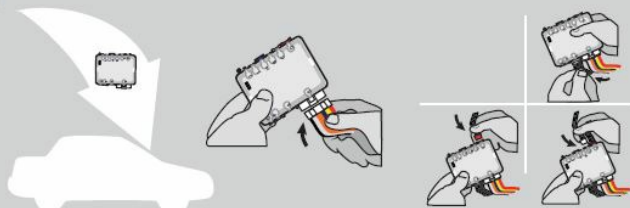
Smartphone*
(Internet provider
charges
may apply)
Téléphone
Intelligent*
(des frais du
fournisseur
Internet peuvent
s'appliquer)

Use the tool:
FLASH LINK UPDATER or
FLASH LINK MOBILE
to visit the DCryptor menu.

Utilisez l'outil:
FLASH LINK UPDATER ou
FLASH LINK MOBILE
pour visiter le menu DCryptor.

*Parts required (not included) *Pièces requises (non incluses)

13



AFTER DCRYPTOR PROGRAMMING COMPLETED
Go back to the vehicle and reconnect the 6-Pin (Main-Harness) or the 4-pins (Data-Link) connector and after all the remaining connector.

APRÈS LA PROCÉDURE DE PROGRAMMATION DCRYPTOR COMPLÉTÉE : retournez au véhicule et rebranchez le connecteur 6-pins (Connecteur principal) ou le 4-pins (Data-Link) et après tous les connecteurs.



The module is now programmed.
Le module est programmé.



**REMOTE STARTER / ALARM VERIFICATION
PROCEDURE | PROCÉDURE DE VÉRIFICATION
DU DÉMARREUR À DISTANCE / ALARME**

Test the remote starter. Remote start the vehicle.
Testez le démarreur à distance. Démarrez le véhicule à distance.

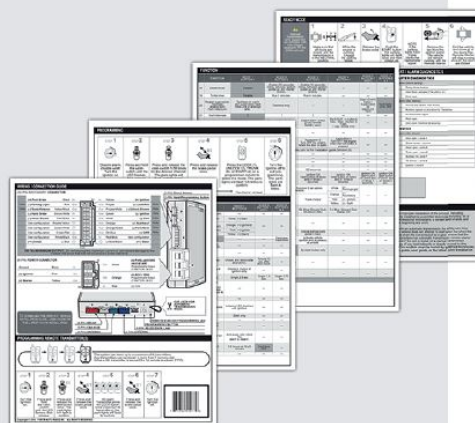
REMOTE STARTER PROGRAMMING PROCEDURE



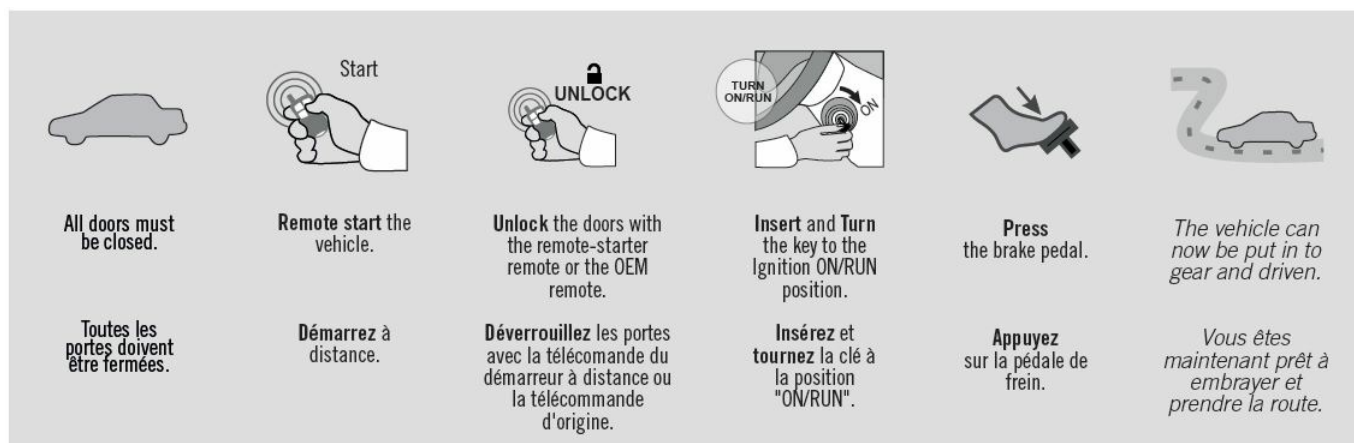
REFER TO THE **QUICK INSTALL GUIDE** INCLUDED WITH THE MODULE FOR THE REMOTE STARTER PROGRAMMING.



RÉFÉREZ-VOUS AU **GUIDE D'INSTALLATION RAPIDE** INCLUS AVEC LE MODULE POUR LA PROGRAMMATION DU DÉMARREUR À DISTANCE.



REMOTE STARTER FUNCTIONALITY



Notice: Updated Firmware and Installation Guides

Updated firmware and installation guides are posted on our web site on a regular basis. We recommend that you update this module to the latest firmware and download the latest installation guide(s) prior to the installation of this product.



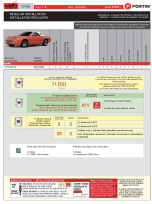
WARNING

The information on this sheet is provided on an (as is) basis with no representation or warranty of accuracy whatsoever. It is the sole responsibility of the installer to check and verify any circuit before connecting to it. Only a computer safe logic probe or digital multimeter should be used. FORTIN ELECTRONIC SYSTEMS assumes absolutely no liability or responsibility whatsoever pertaining to the accuracy or currency of the information supplied. The installation in every case is the sole responsibility of the installer performing the work and FORTIN ELECTRONIC SYSTEMS assumes no liability or responsibility whatsoever resulting from any type of installation, whether performed properly, improperly or any other way. Neither the manufacturer or distributor of this module is responsible of damages of any kind indirectly or directly caused by this module, except for the replacement of this module in case of manufacturing defects. This module must be installed by qualified technician. The information supplied is a guide only. This instruction guide may change without notice. Visit www.fortinbypass.com to get the latest version.

TECH SUPPORT

- Tél: 514-255-HELP (4357)
- 1-877-336-7797
- ADDENDUM GUIDE
- www.fortinbypass.com.

Documents / Resources



[FORTIN 2004 Ford Thunderbird Regular Key Remote Starters and Alarm Systems](#) [pdf] In stallation Guide
2004 Ford Thunderbird Regular Key Remote Starters and Alarm Systems, 2004, Ford Thunder bird Regular Key Remote Starters and Alarm Systems, Key Remote Starters and Alarm Systems, Alarm Systems, Systems

References

- **[Fortin Remote Car Starters, Car Alarms, Immobilizer Bypass and Connected Vehicle Solutions | Fortin Electronic Systems](#)**
- **[Fortin Remote Car Starters, Car Alarms, Immobilizer Bypass and Connected Vehicle Solutions | Fortin Electronic Systems](#)**

[Manuals+](#)