

Fort ECSPST Programmable Thermostat with RF and WiFi White



Fort ECSPST Programmable Thermostat with RF and WiFi White Instruction Manual

[Home](#) » [Fort](#) » Fort ECSPST Programmable Thermostat with RF and WiFi White Instruction Manual 

Contents

- [1 Fort ECSPST Programmable Thermostat with RF and WiFi White](#)
- [2 Product Information](#)
- [3 Product Usage Instructions](#)
- [4 Features](#)
- [5 Product Overview](#)
- [6 Default Programming Schedule](#)
- [7 Thermostat Functions](#)
- [8 Operating Modes](#)
- [9 Thermostat Configuration](#)
- [10 Thermostat Installation](#)
- [11 Installation Plan A](#)
- [12 Pairing the Thermostat and Receiver](#)
- [13 Product Description](#)
- [14 Preparation for use](#)
- [15 Installation Instructions](#)
- [16 Documents / Resources](#)
 - [16.1 References](#)
- [17 Related Posts](#)



Fort ECSPST Programmable Thermostat with RF and WiFi White



Product Information

Specifications:

- **Product:** ECSPST Full Manual Fort Programmable Thermostat with RF and WiFi White
- **Receiver Features:** Wireless icon, Frost protection icon, Call for heat icon, Programming mode icon, Low battery alert, Confirm icon, Up button, ON/OFF button, Room temperature or set temperature display, Down button
- **Receiver Indicators:** WiFi Status Indicator, Network Pairing Mode LED (Green), Network Connection Successful LED (Blue), Output Indicator Call for heat (Green), ON/OFF Indicator Power indicator (Red), Override output status (Green), RF indicator (Yellow)
- **Thermostat Features:** Wireless icon, Frost protection icon, Call for heat icon, Programming mode icon, Low battery alert, Confirm icon, Up button, ON/OFF button, Room temperature or set temperature display, Down button
- Control Button (With power indicator)

Product Overview:

The ECSPST Full Manual Fort Programmable Thermostat with RF and WiFi in white color provides advanced features for efficient temperature control. The thermostat and receiver work together seamlessly to ensure optimal heating performance.

Thermostat Functions:

- **Switching between ON & Standby modes:**
Easily switch the thermostat between ON and Standby modes for effective control.
- **Key Lock Function:** Securely lock or unlock the keys to prevent unauthorized changes.
- **Frost Protection:** Enable/disable frost protection feature as needed.
- **Open Window/Door Detection Function:** Detect open windows/doors to optimize heating efficiency.
- **Low Power Alert:** Receive alerts when the thermostat battery is critically low.
- **Optimal Start:** Automatically start heating slightly before the scheduled time for optimal temperature.

- **Fault Detection:** Get notified in case of internal sensor damage.
- **Operating Modes:** Schedule Mode and Boost Mode for customized heating control.

Thermostat Installation:

1. **Installation Plan A:** Follow the detailed installation instructions provided in the manual for a standard installation process.
2. **Installation Plan B:** For alternative installation methods, refer to the manual for specific guidelines.

How to integrate with Alexa and Google Home:

1. **Alexa Integration:** Follow the step-by-step instructions to seamlessly integrate the ECSPST with Alexa for voice control.
2. **Google Home Integration:** Connect the thermostat to Google Home for convenient voice commands and control.

Product Usage Instructions

1. **Preparation for Use:** Ensure all components are properly set up and connected before use.
2. **Installation Instructions:** Install the thermostat and receiver as per the chosen installation plan to enable proper functionality.
3. **Voice Commands:** Use voice commands to control the thermostat through Alexa or Google Home for hands-free operation.

Frequently Asked Questions (FAQ):

1. **Q: How can I disable the frost protection feature?**

A: The frost protection feature can be disabled in the configuration menu of the thermostat. Refer to the manual for detailed instructions.

2. **Q: What should I do if I receive a low battery alert?**

A: When you receive a low battery alert on the thermostat, make sure to replace the batteries promptly to ensure uninterrupted operation.

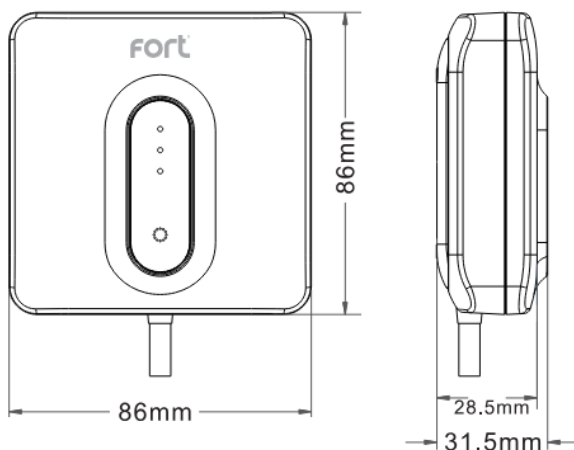
ECSPST Full Manual
Fort Programmable Thermostat with RF and WiFi White

The latest product manuals and software is available online: https://www.espuk.com/technical_support

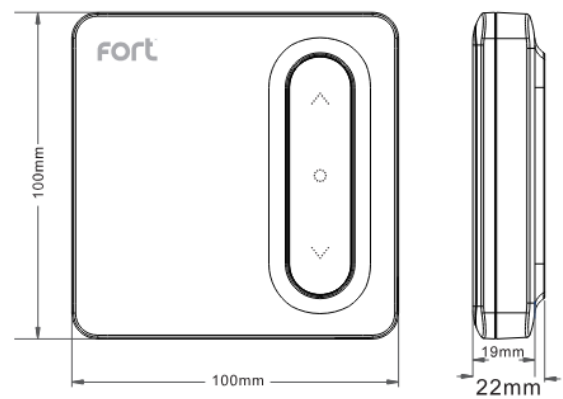


Features

- Large LED display
- Touch button
- Permanent user settings, and program settings during power loss
- One button “Holiday” mode
- Programming Periods;
- 7 Day individual, 5/2 split (Monday – Friday, Saturday & Sunday)
- 6 Separate time/temperature periods per day
- Key lock facility
- Low battery indication
- Frost protection
- Optional Intelligent function; Optimal Start Page: 2
- Open window function
- Integrated with Clicksmart+ App



Receiver



Thermostat

Product Overview

Thermostat

(1)  Wireless icon “” always on when paired with the receiver, flashes when connection is intermittent

(2)  Frost protection icon

(3)  Call for heat icon

(4)  Programming mode icon

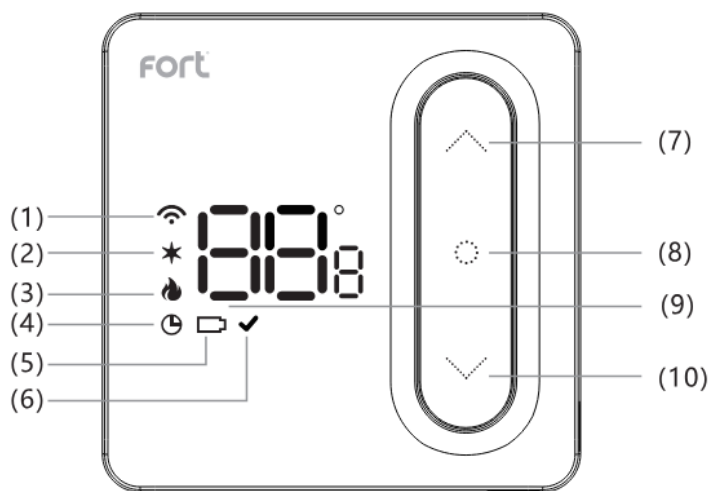
(5)  Low battery alert

(6)  Confirm icon

(7)  Up button

(8)  ON/OFF button

(9) Room temperature or setting temperature display



Receiver

(1)  Wireless icon “” always on when paired with the receiver, flashes when connection is intermittent

(2)  Frost protection icon

(3)  Call for heat icon

(4)  Programming mode icon

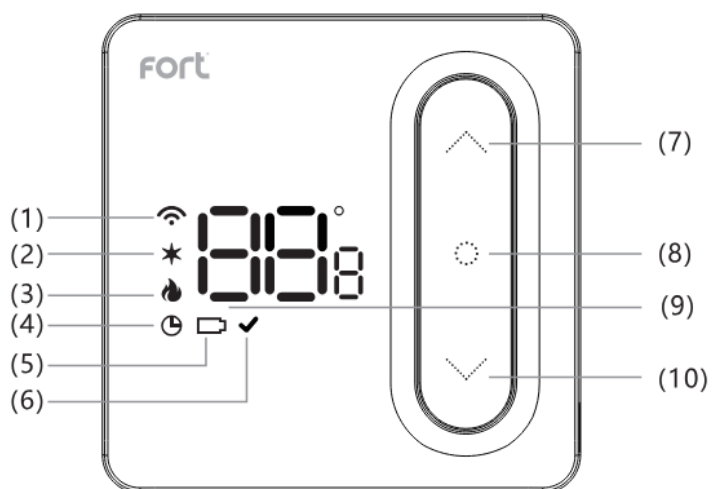
(5)  Low battery alert

(6)  Confirm icon

(7)  Up button

(8)  ON/OFF button

(9) Room temperature or setting temperature display



To manually call for heat, press and hold the control button, until the LED turns **Green**.

Default Programming Schedule



Note: The programming schedule can be configured within the ClickSmart+ app

Period 1		Period 2		Period 3		Period 4		Period 5		Period 6	
Morning ON		Morning OFF		Afternoon ON		Afternoon OFF		Evening ON		Evening OFF	
06:00	20°C	08:00	16°C	11:00	20°C	14:00	16°C	18:00	20°C	22:00	16°C

Thermostat Functions

Functions




• Switching between ON & Standby modes

- Press  to turn the Thermostat into the ON mode. Press and hold  again to switch the thermostat into standby mode. When in standby mode the Thermostat will display



- **Note:** When in standby mode, only frost protection is active on the thermostat.

• Key Lock Function

- In main display interface, press and hold   at the same time to lock or unlock the keys. When locked, the thermostat will display .

• Frost Protection


- If the room temperature falls below 5°C, frost damage can occur. To protect your home, the Thermostat once it detects the ambient temperature is below 5°C will send a Call for heat, until the temperature is



above 8°C, and will then end the Call for heat. This is indicated by a

- This feature can be disabled in the configuration menu

• Open Window/Door Detection Function

If the room temperature drops 1.5°C in 3 minutes, this function will activate and display , then turn down all heating. When the room temperature increases by 1.5°C or after 30 minutes, the thermostat will return to normal operation. Press any button to cancel this function when it is active.

• Low Power Alert

- When the thermostat is critically low on power, it will alert the user by displaying



to notify them to change the “ batteries.

• Optimal Start

- If optimal start is enabled, the thermostat will start the call for heat slightly before the schedule calls for it. So that by the scheduled start time, the ambient temperature is already at the set temperature.
- This feature can be enabled in the configuration menu

• Fault

If there is damage to the internal sensor the user will be alerted by the display message .

Operating Modes

“Err”

- **Schedule Mode**

The thermostat will run according to the set schedule, the screen will display a solid



icon.

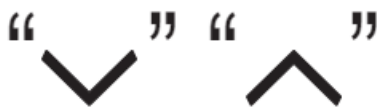
- **Boost Mode**

- The boost mode, will send a call for heat until the next program in the schedule and will continue to send the call for heat until the set temperature is achieved.



- When in schedule mode (indicated by a solid

icon), press the



and set the desired temperature, the Thermostats display will flash to indicate it is activating the boost mode.



- When a boost is currently active it will display the

icon flashing.

- **Manual Mode**

- The “Manual” mode sets the thermostat to the desired temperature and will continue to do so until, the



user ends the Manual mode. Pressing

will toggle between Schedule mode & Manual

Mode. The Thermostat will indicate it is in Manual mode by not displaying the

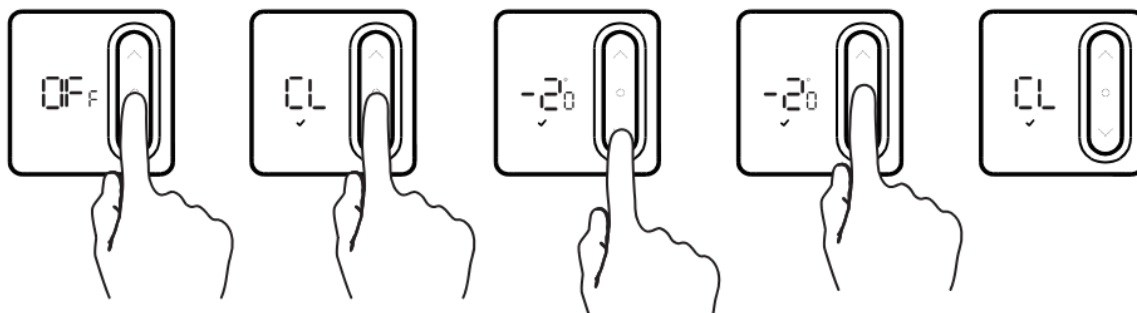


icon.

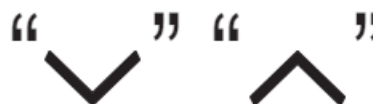
Thermostat Configuration

To configure the thermostat using its controls you will need to do the following:

- (1) In standby mode indicated by the Thermostat displaying “OFF”, long press “○” to enter the configuration menu.
- (2) The first item will display “CL”, press “○” to enter the configuration for the first item.
- (3) You can adjust the setting by pressing “▼” or “▲”.
- (4) “✓” will flash, and then press “○” will save current settings, and exit to the configuration menu.
- (5) Use the “▼” or “▲” to select the configuration menu, and then press “○” to enter the next configuration, and follow the steps 3 & 4.
- (6) Finally once all menus have been configured, long press “○” to save and exit the configuration menu.



Restore factory settings:

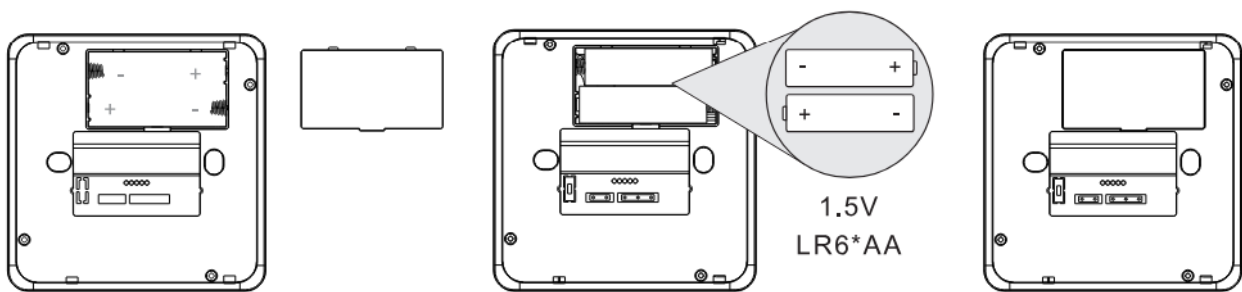


After entering the configuration menu, press and hold both the buttons, to restore the thermostat to factory settings, the thermostat will display “dEf” and flash 3 times. This will remove any custom configuration setting(s) and programming setting(s)

Step No.	Displayed (Factory Default)	Press “▼” or “▲” to select	Descriptions
1	CL (00)	-4°C to +4°C	Temperature calibration
2	PH (30)	+20°C to +35°C	Select maximum setting temperature range
3	PL (05)	+5°C to +20°C	Select minimum setting temperature range
4	db (05)	0.5°C to 3°C	Start heating conditions: When setting temperature - Room temperature ≥ 0.5°C (0.5~3°C option), start heating. Room temperature ≥ Setting temperature, stop heating.
5	SEs (6)	4 / 6	Number of programming periods per day; 2 ON & 2 OFFs / 3 ON & 3 OFFs
6	ES (OFF)	ON / OFF	Intelligent function (Optimal start)
7	PP (OFF)	ON / OFF	Frost Protection function
8	RY (OFF)	ON / OFF	Thermostat Relay Output
9	SH (ON)	ON / OFF	Thermostat LED Display option ON: LEDs displays on Thermostat VIA app. OFF: LEDs don't display on Thermostat VIA app.

Thermostat Installation

Battery Installation



1 Take off cover

2 Install AA Batteries

3 Complete Installation

Note: Ensure the batteries are correctly installed, and the polarities are correctly aligned.

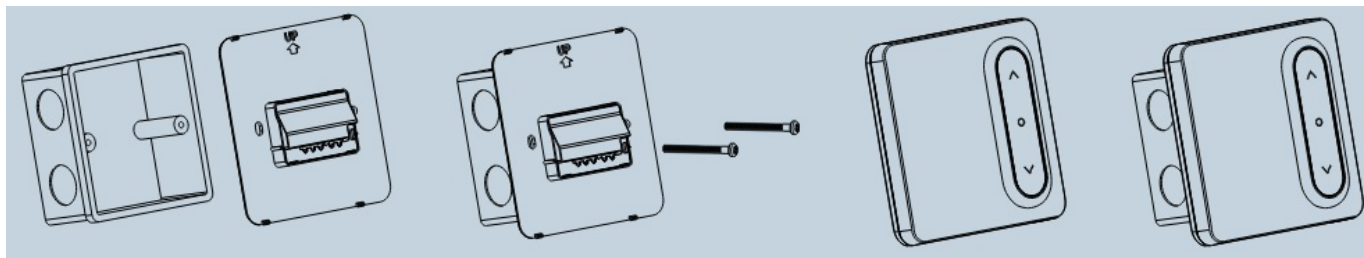
Desk mounted



1 Hang Thermostat on stand

2 Complete

Wall mounted



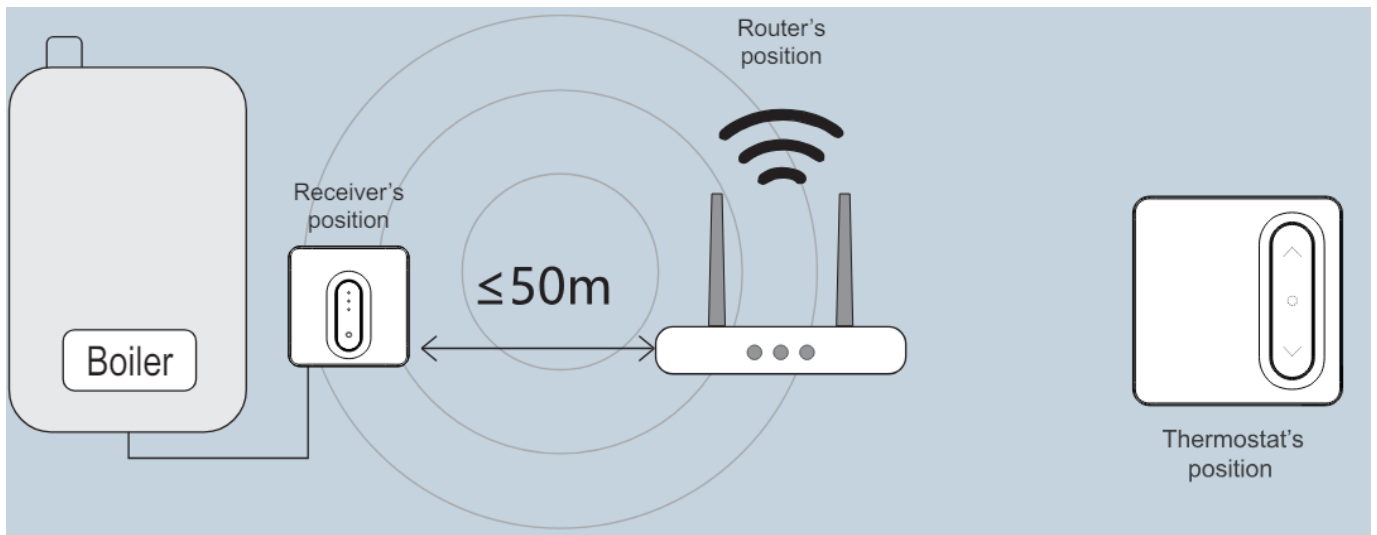
1. Put the back board on the installation box
2. Secure backplate to installation box using bolts
3. Secure thermostat to backplate
4. Complete

Installation Plan A

Our products are designed to comply with the recommended codes of practice and is to be installed and serviced by competent persons in accordance with the relevant wiring regulations.

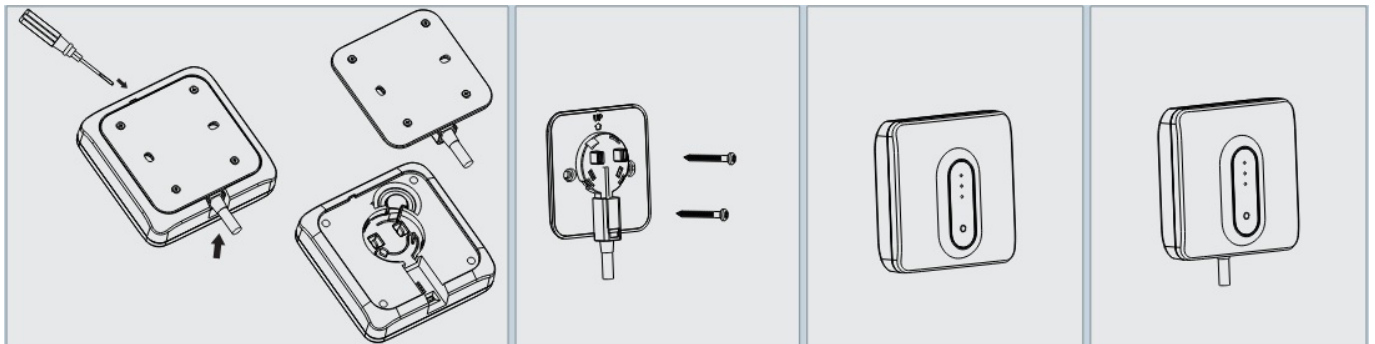
Warning: Before any installation or maintenance, ensure that the electrical supply is switched off at the breaker.

The receiver needs to be installed in the boilers vicinity, and within the desired wireless networks signal area. The Thermostat can be installed anywhere within range of the receiver.



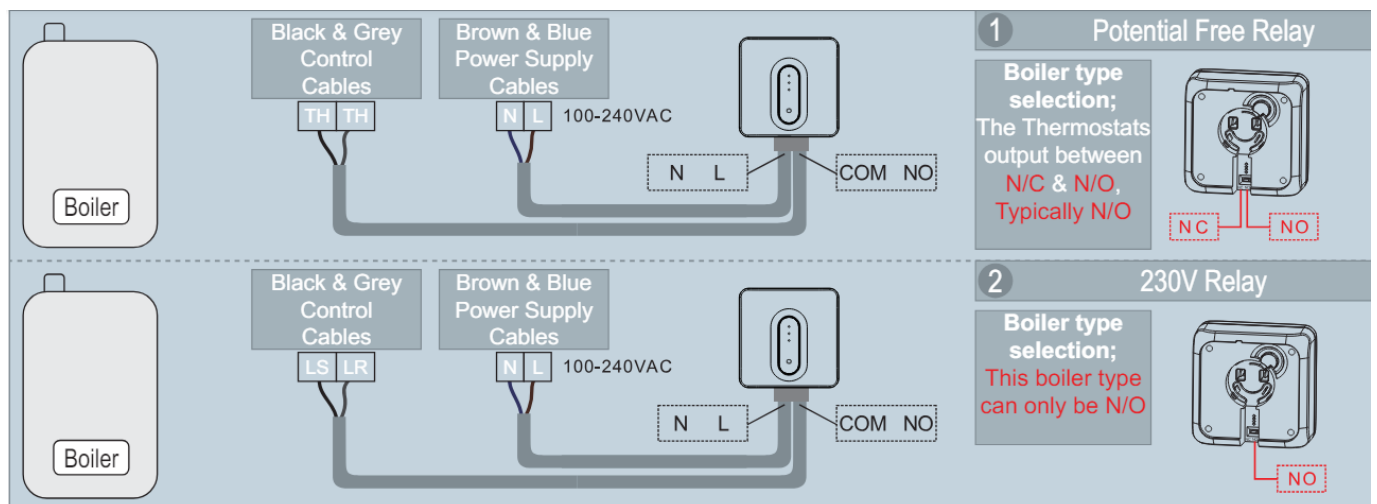
Note: Distance between thermostat and receiver cannot be greater than 100m (open field).

Install receiver on the wall



1. Open backplate from the top
2. Install the backplate onto the wall.
3. Clip the receiver onto the backplate
4. Complete

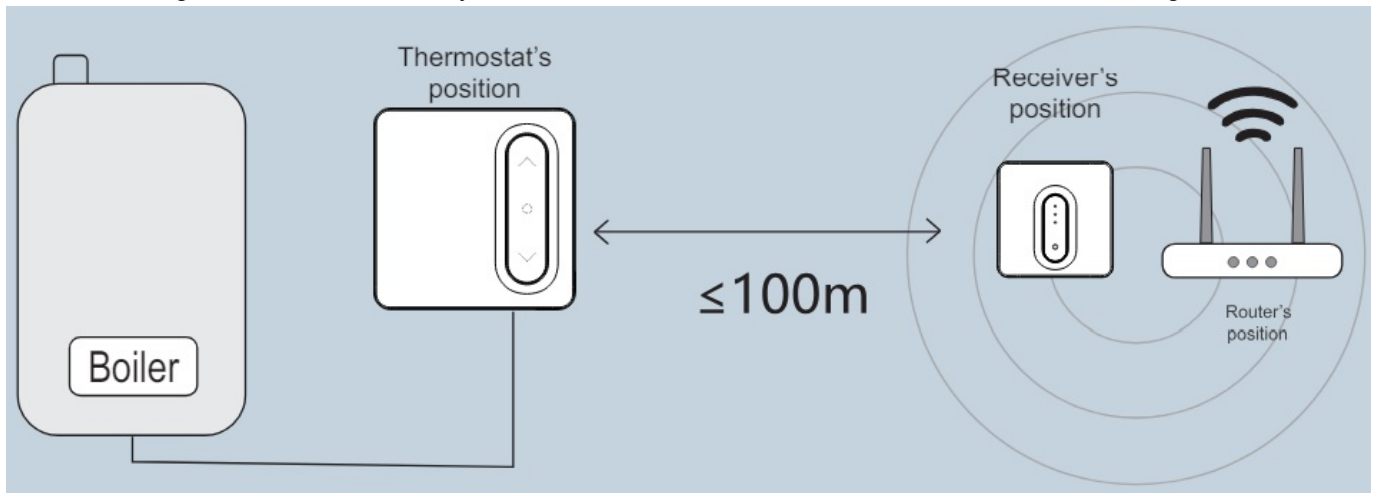
Installation Plan A Wiring



Installation Plan B

- Our products are designed to comply with the recommended codes of practice and to be installed and serviced by competent persons in accordance with the relevant wiring regulations.
- **Warning:** Before any installation or maintenance, ensure that the electrical supply is switched off at the breaker.

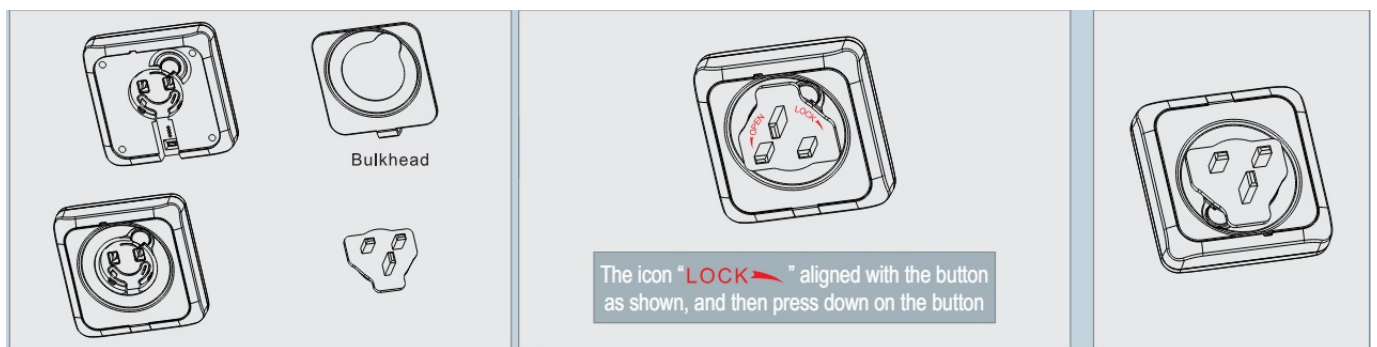
When installing the Thermostat directly to the boiler, ensure the receiver is within the WiFi coverage area.



Note: Distance between thermostat and receiver cannot be greater than 100m (open field).

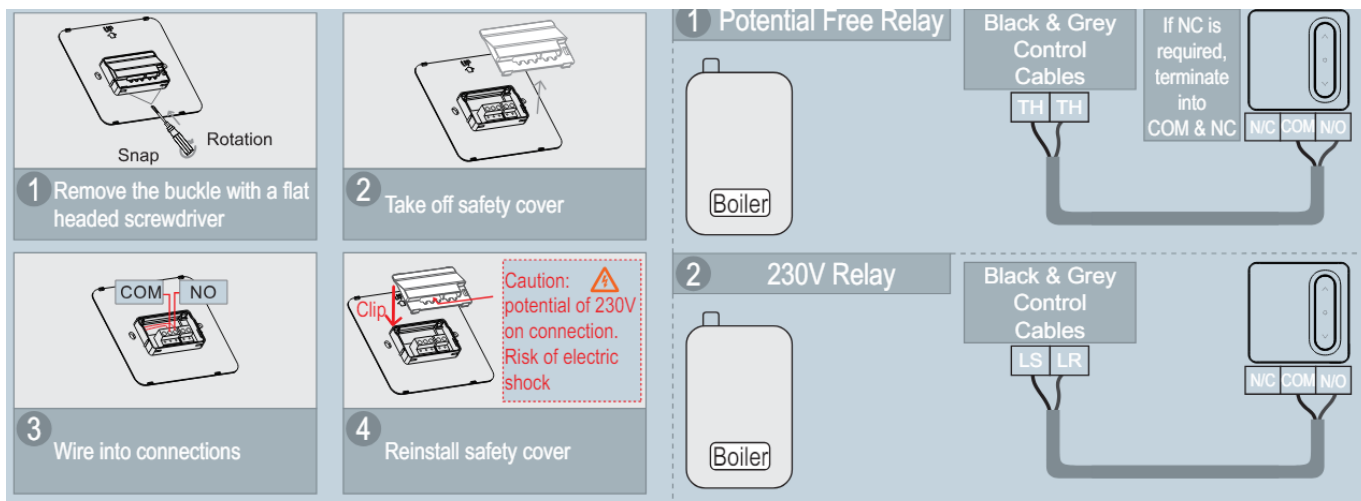
When the Thermostat is connected directly to the boiler, item 8 of the configuration should be "ON" .[Page 5]. As default it is set to OFF

Install receiver as gateway with plug adapter



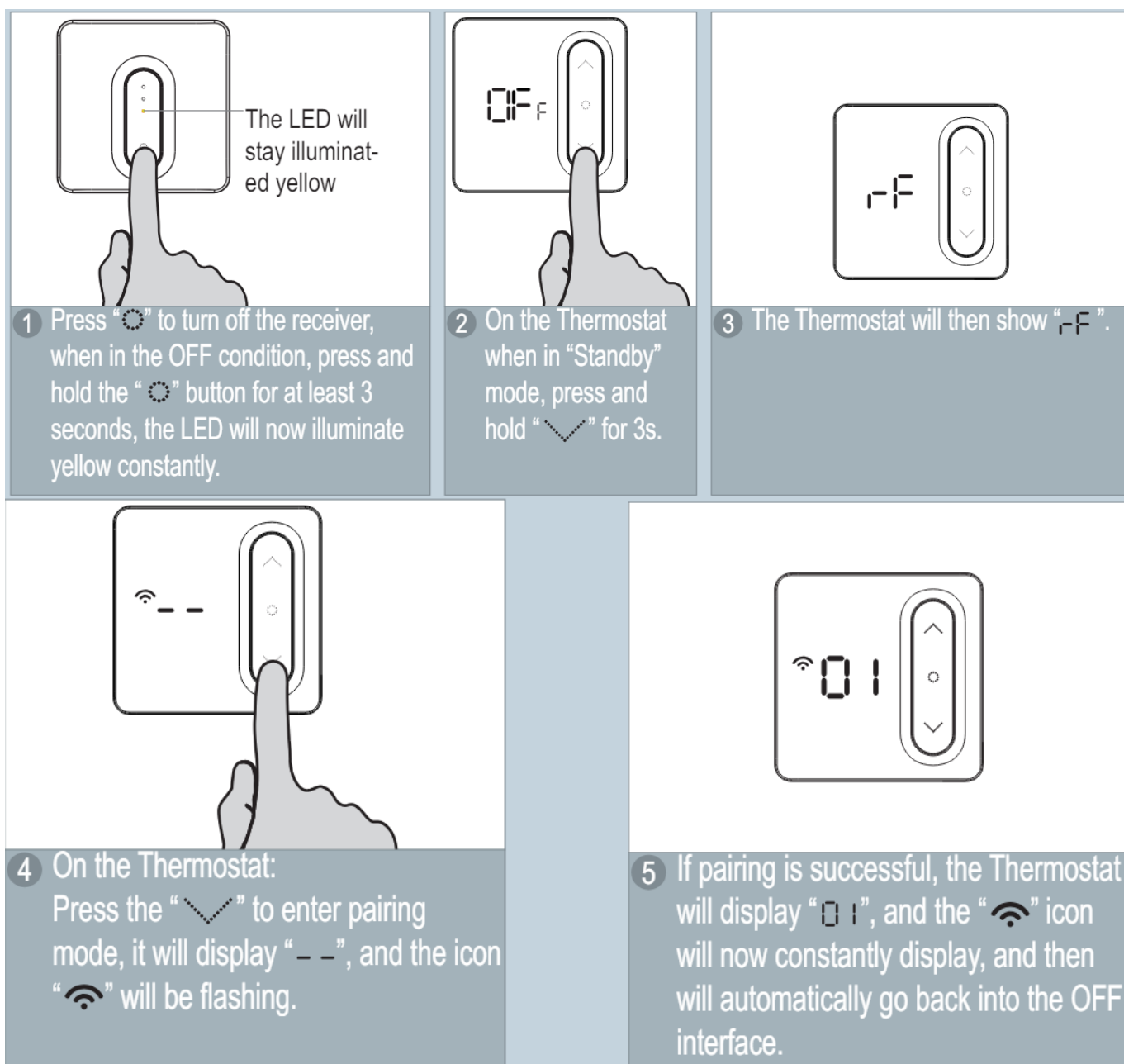
1. Install rear bulkhead
2. Press and rotate to clip in the adapter
3. Complete

Installation Plan B Wiring



Pairing the Thermostat and Receiver

As default, the Thermostat & Receiver are pre-paired



Product Description

- The WiFi Smart Thermostat (ECSPST) forms part of the ESP Fort range of smart products, and can also be used in conjunction with Scolmores ClickSmart+ range of products.
- Users are able to control the Smart Thermostat using the ClickSmart+ app, manually and using voice controls (once correctly configured).
- The ECSPST can be used to program your heating schedule, and the desired heating temperature.

Preparation for use

- To use the ECSPST you will need to download the ClickSmart+ app.
- Ensure that you have a mobile device running iOS 8 or higher, or Android 4.1x or higher, and a sufficient WiFi network connection.
- It is important to know your Wi-Fi network and W-Fi network's password before pairing the Thermostat to the ClickSmart+ app.



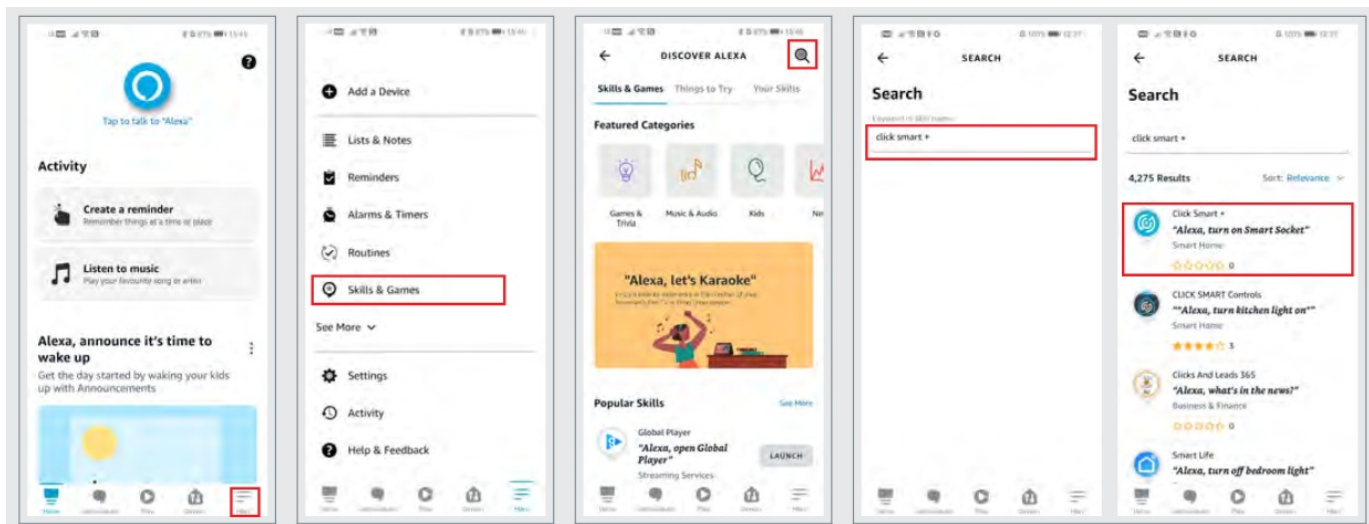
- Download the ClickSmart+ App on your mobile device from the App Store or Google Play.
- You can scan the above QR code to directly download the app Sign in or register following the instructions on the ClickSmart+ App.

Installation Instructions

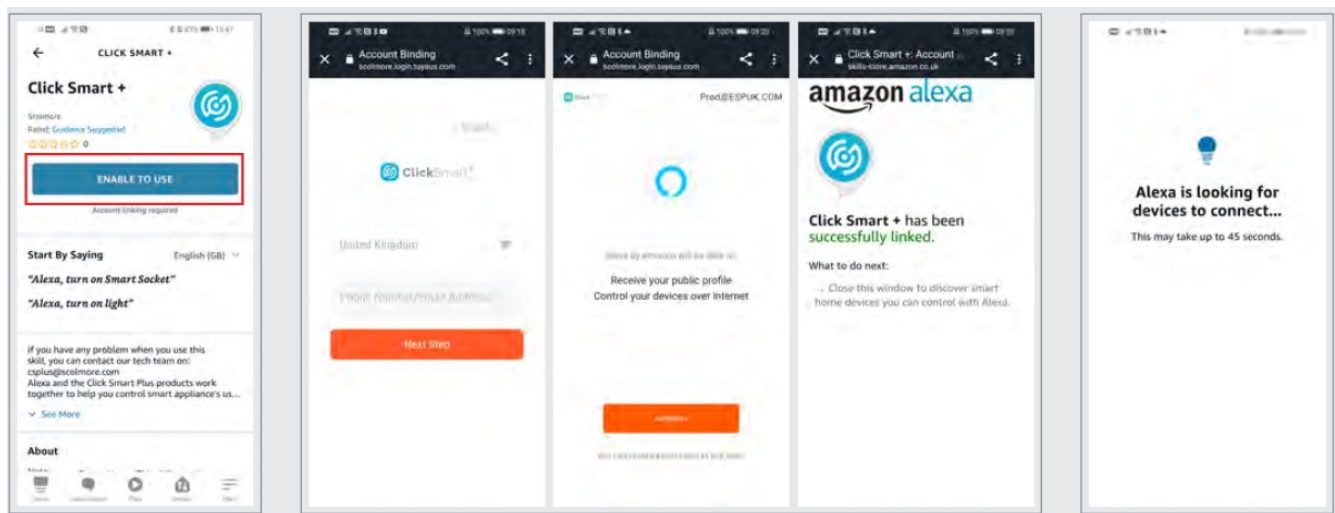
1. On the ClickSmart+ app's home page, click on the "+" symbol in the top right of the home screen.
2. Then click on "ESP" on the left handside.
3. And finally click on "Smart WiFi Thermostat with RF"
4. The app will then display on screen instructions for pairing the ECSPST onto the Wi-Fi network.

How to integrate the ECSPST into Alexa

Once the ECSPST has been configured with the ClickSmart+ App, you can then control the thermostat using voice commands.



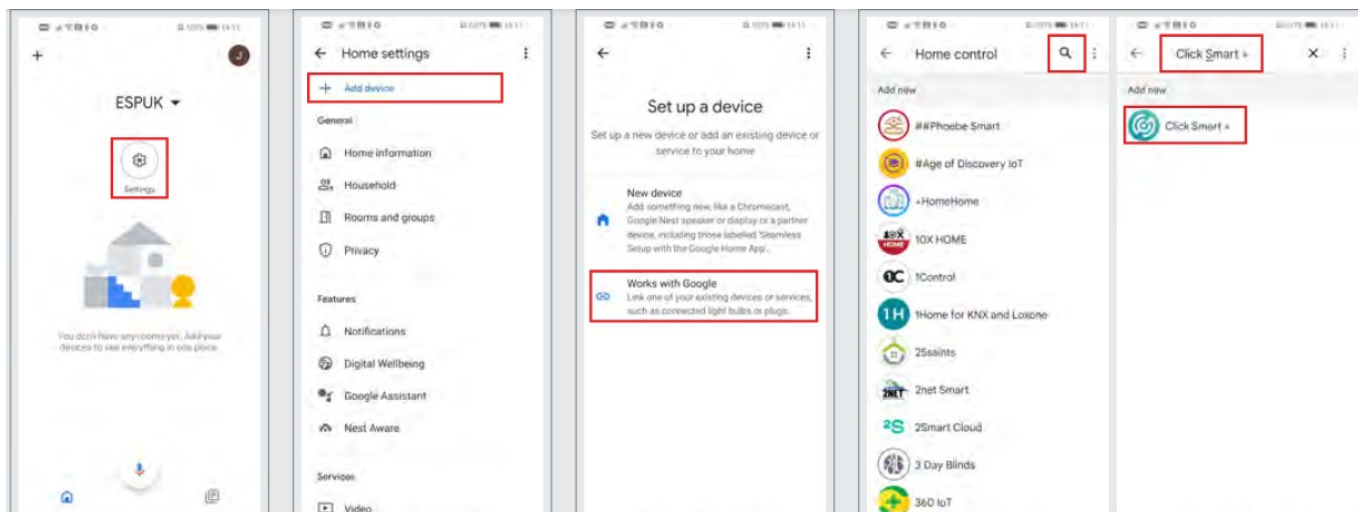
1. Open the Alexa app, and press “More” on the bottom task bar
2. Press “Skills & Games”
3. Press the magnifying glass
4. Search for “Click Smart +”, and click on “Click Smart +”



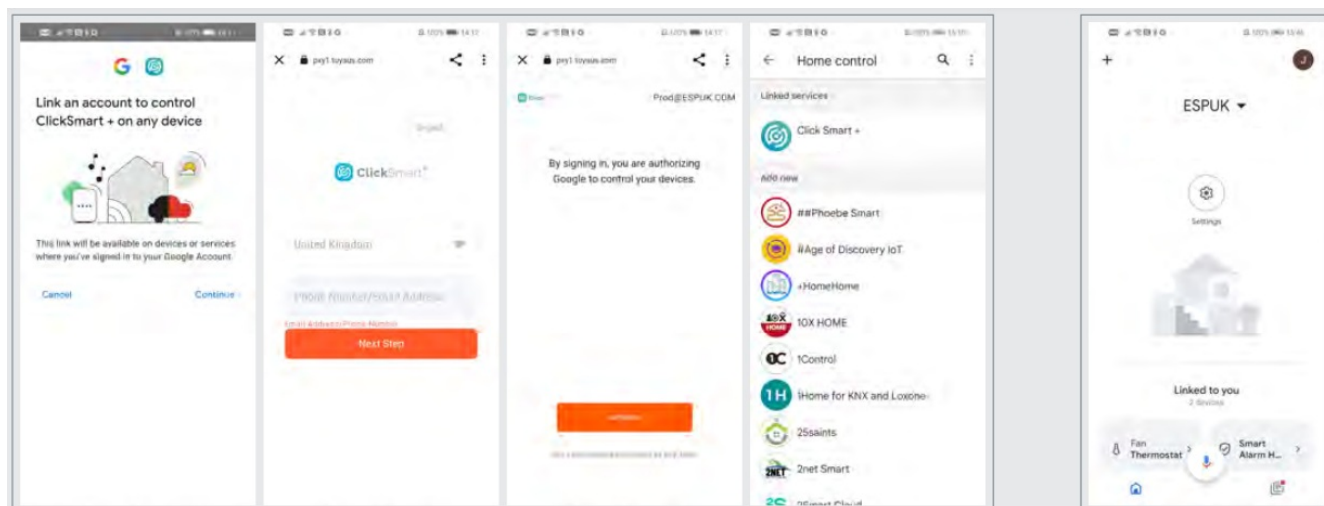
5. Press “ENABLE TO USE”
6. The Alexa app will then take you through the Account Binding Process, you must use the ClickSmart+ Account you used to pair your ECSPST
7. Alexa will start searching for Alexa Voice compatible Click Smart + products.

How to integrate the ECSPST into Google Home

Once the ECSPST has been configured with the ClickSmart+ App, you can then control the thermostat using voice commands.



1. Open the Google Home app and press “settings”
2. Press “Add Device”
3. Press “Works with Google”
4. Press on the magnifying glass, then search for “Click Smart +”, and finally click onto “Click Smart +”



5. The Google Home app will then take you through the Account Binding Process, you must use the ClickSmart+ Account you used to pair your ECSPST
6. Google Home will now contain all compatible Click Smart + products.

Voice Commands

After waking up the Alexa device or Google Home/Assistant Device, you can use the below voice commands:

Amazon Alexa

- Turn On <DEVICE NAME>
- Turn Off <DEVICE NAME>
- What is the temperature of <DEVICE NAME> Make it warmer in <DEVICE NAME>
- Make it cooler in <DEVICE NAME>
- Set <DEVICE NAME> to <NUMBER VALUE>

Google Home/Assistant

- Turn On <DEVICE NAME>


- Turn Off <DEVICE NAME>
- Set <DEVICE NAME> to <NUMBER VALUE>

Elite Security Products UK, Unit 7 Target Park, Shaw bank Road, Lakeside, Redditt, Worcestershire, B98 8YN

- **Tel:** +44(0) 1527 51 51 50
- **Fax:** +44(0) 1527 15 01 43
- **Email:** info@espuk.com
- **Registered in England, Company Registration Number:** 02769392,
- For more product information please visit www.espuk.com
- E&OE – Errors and Omissions Excepted. J22



Documents / Resources

	<p>Fort ECSPST Programmable Thermostat with RF and WiFi White [pdf] Instruction Manual ECSPST Fort Programmable Thermostat with RF and WiFi White, ECSPST, Fort Programmable Thermostat with RF and WiFi White, Programmable Thermostat with Wi Fi White, with RF and WiFi White</p>
---	--

References

- [ESP UK - Homepage](#)
- [ESP UK - Technical Support](#)
- [User Manual](#)

Manuals+, Privacy Policy

This website is an independent publication and is neither affiliated with nor endorsed by any of the trademark owners. The "Bluetooth®" word mark and logos are registered trademarks owned by Bluetooth SIG, Inc. The "Wi-Fi®" word mark and logos are registered trademarks owned by the Wi-Fi Alliance. Any use of these marks on this website does not imply any affiliation with or endorsement.