



CECSPHB Smart Security Hub User Guide

[Home](#) » [Fort](#) » CECSPHB Smart Security Hub User Guide 



Contents

- [1 General](#)
- [2 Installation](#)
- [3 Preparation For Use](#)
- [4 Adding Accessories](#)
- [5 Door/Window Contact](#)
- [6 Remote Control](#)
- [7 Siren](#)
- [8 APP Pairing](#)
- [9 Resetting the Device](#)
- [10 Functionality](#)
- [11 Guidance](#)
- [12 Documents / Resources](#)
 - [12.1 References](#)
- [13 Related Posts](#)

General

Our products are designed to comply with the recommended codes and practice and is to be installed and serviced by competent persons in accordance with the relevant regulations.

Contents

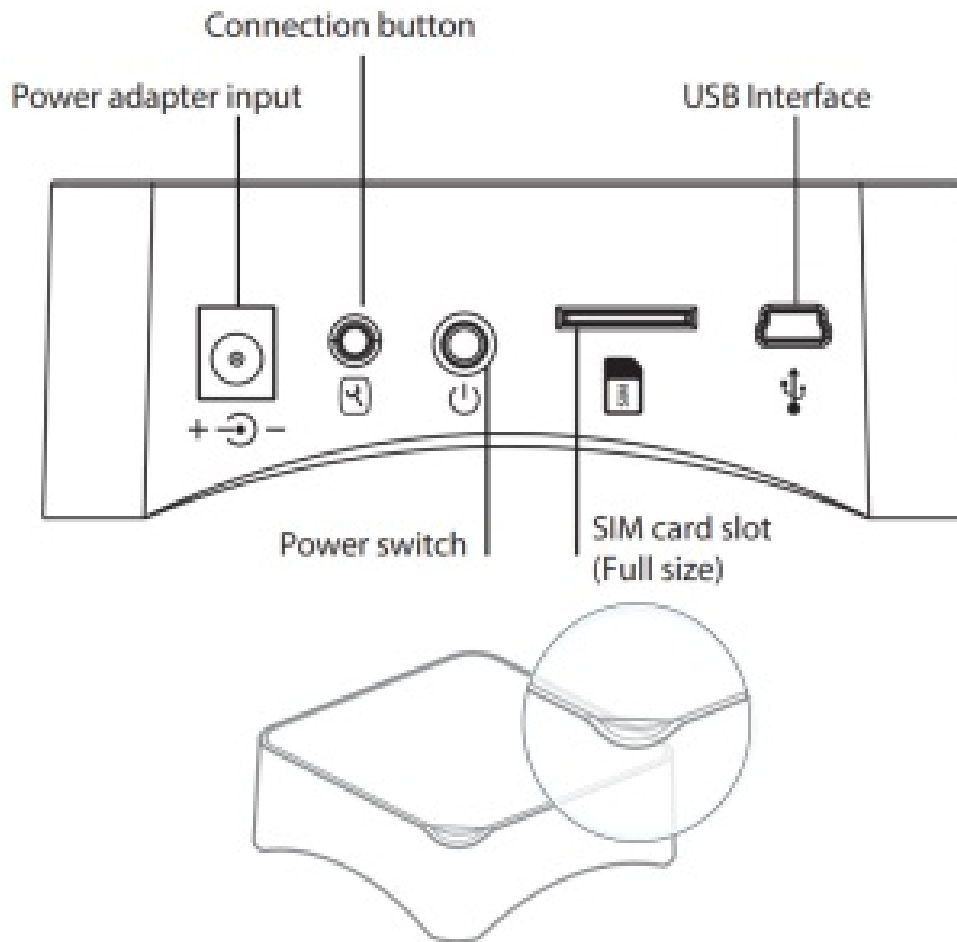
The Smart hub is supplied separately and as part of a kit, please check the packaging to ensure all required

accessories are included.

The Smart hub is supplied with a power adapter, the accessories with the required batteries, and a screw pack.

Installation

For best performance, the final installation site of the hub will be at the central point of the system.
Connect the supplied power adapter to the hub and apply power, the hub will operate after 60secs.



HUB LED Indications

Red Flashing/Fixed: System Armed

Blue Flashing/fixed: System armed in home mode

Green Flashing/fixed: System disarmed

Red/Blue/Green fixed: Connected to the server

Red/Blue/Green Blink Slowly: Wi-Fi network disconnected

Green Blink Fast: Wi-Fi network settings EZ mode

Blue Blink Fast: Wi-Fi network settings AP mode

White fixed: RF connection mode



Products bearing this mark are compatible with the Clicksmart+ APP

Preparation For Use



<https://a.smart321.com/clicksmartplus>

Ensure that the smartphone is connected to the same Wi-Fi network that you would like to attach the device to. Ensure that you have a mobile device running iOS 8 or higher or Android 4.1x or higher and a 2.4GHzWi-Fi connection.

Adding Accessories

If the hub has been supplied as part of a kit the accessories will be pre-paired for convenience. For additional accessories; PIR

1. Select your ESP Hub in the ClickSmart+ app, click on “Accessories” along the bottom, then click on “Detectors” at the top, then click on “+ Add”, finally press the test button on the back of the PIR.
2. The control panel will beep once to acknowledge the connection, or twice if this PIR has already been paired.

Door/Window Contact

1. Select your ESP Hub in the ClickSmart+ app, click on “Accessories” along the bottom, then click on “Detectors” at the top, then click on “+ Add”, finally separate the magnet from the transmitter.
2. The control panel will beep once to acknowledge the connection, or twice if this Door Contact has already been paired.

Remote Control

1. Press once on the “Connection Button” on your ESP Hub
2. Press “Arm” on the Remote control
3. The control panel will beep once to acknowledge the connection, or twice if this Remote Control has already been paired.

Siren

1. Press the “Connection Button” on your siren for one second. The LEDs should illuminate, the siren is now in connection mode for 20 seconds.
2. Press “ARM” or “SOS” on your control panel (not VIA a remote control). you should hear one beep; the siren is now connected.

APP Pairing

1.



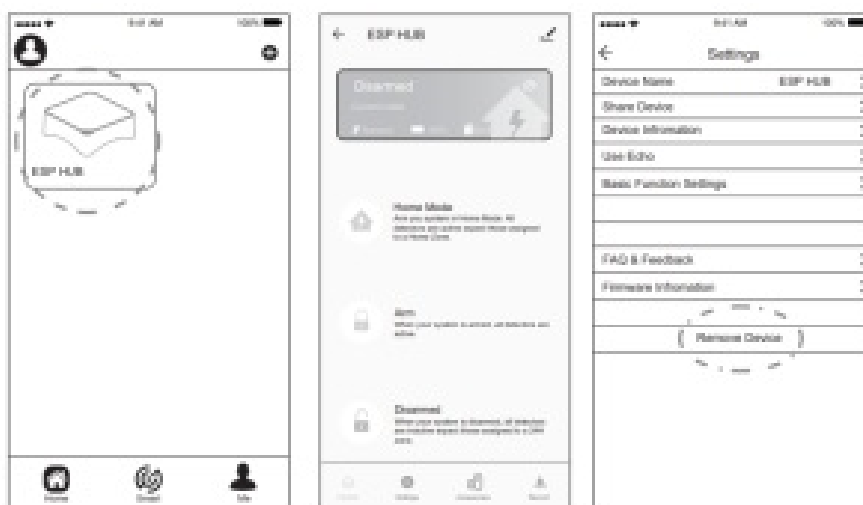
Using the supplied AC Adapter, plug the power plug into your hub, and push the power button.

2. Long press the “Connection Button”, until you hear 1 beep, the LED will start to flash green, your hub is now ready to be connected to your router.
3. On the ClickSmart+ app, click on the add icon “+”, then click “Wi-Fi Hub”, and then follow on-screen instructions.

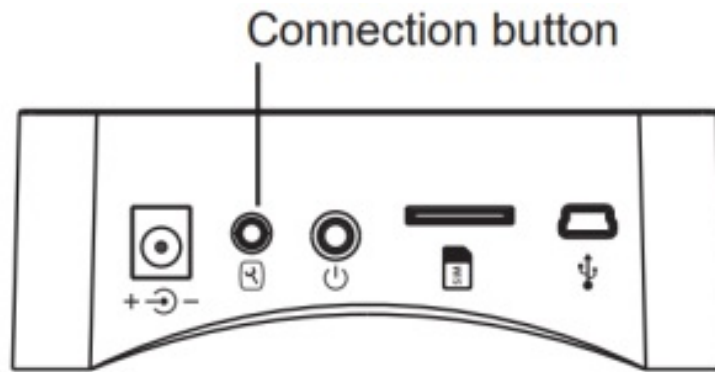
The ClickSmart+ app will guide you through: Entering the Wi-Fi Network and Password. Using the Camera to scan a QR code. Connecting the Device.

Resetting the Device

If the Hub needs to be reset, connected to a new Wi-Fi network, or if it needs to be paired with a new master account, remove the device from the app, prior to resetting the device.



Turn the Control panel on, press the “Connection Button” 5 times, within 5 seconds of the Hub being turned on, the Hub will then be restored to factory settings. The system settings and all connected accessories will be restored.



Functionality

The system can be operated differently depending on the type of components and setup configured.
For the full manuals please visit the ESP website: www.espuk.com

Guidance

- >Unit requires a minimum of 2 Mbps (upload/download)
- >If the signal strength of your Wi-Fi router is weak: Change router/hub relative position to receive better signal, Use Wi-Fi repeater/extender to maximize the range of your Wi-Fi router.
- >Smart alarm accessories have specified a maximum of 80meters line of sight in the open air. For every obstacle, the signal strength is reduced.
- >If the network has changed the hub will require a reset
- >Battery life depends on working and environmental factors
- >If the hub needs to be added to a new account, unbind the device from the first account prior to resetting the device.

For more product information please visit the ESP website



Elite Security Products
Redditch B98 8YN



Telephone : 01527 51 51 50

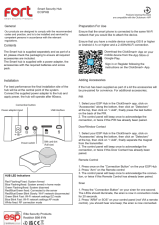

Fax: 01527 51 51 43

Email: info@espuk.com

Web: www.espuk.com

E&OE – Errors and omissions excepted.G21

Documents / Resources

	Fort ECSPHB Smart Security Hub [pdf] User Guide ECSPHB, Smart Security Hub
	Fort ECSPHB Smart Security Hub [pdf] User Guide ECSPHB Smart Security Hub, ECSPHB, Smart Security Hub, Security Hub, Hub

References

- [ESP UK - Homepage](#)