



FORMULER B08DP6SWB1 Z Alpha Android Dual Band Smart Learner User Guide

[Home](#) » [FORMULER](#) » FORMULER B08DP6SWB1 Z Alpha Android Dual Band Smart Learner User Guide 

Contents

- [1 FORMULER B08DP6SWB1 Z Alpha Android Dual Band Smart Learner](#)
- [2 SAFETY INFORMATION](#)
- [3 INSTALL](#)
- [4 FCC Warning](#)
- [5 Documents / Resources](#)
- [6 Related Posts](#)

FORMULER

FORMULER B08DP6SWB1 Z Alpha Android Dual Band Smart Learner



RED Declaration

FORMULER hereby declares that this wireless device complies with all material requirements and other relevant provisions of the 2014/53/EU Directive. A copy of the Declaration of Conformity may be obtained directly from COBOPLUS [Thomas Edison 4, 28521 Madrid, Spain

For technical support, regulatory compliance information, and user guide, visit <https://support.formuler.tv>

SAFETY INFORMATION

FORMULER products are designed to operate safely when installed and used according to the product instructions and general safety practices. The guidelines included in this document explain the potential risks associated with equipment operation and provide important safety practices designed to minimize these risks. By carefully following the information contained in this document, you can protect yourself from hazards and create a safer environment.

This product is designed and tested to meet IEC 60950-1, the Standard for Safety of Information Technology Equipment. This also covers the implementation of IEC 60950-1 based safety standards around the world, e.g. UL 60950-1.

Retain and follow all product safety and operating instructions. Always refer to the documentation supplied with your equipment. Observe all warnings on the product and in the operating instructions.

Note: Read all safety information below and operating instructions before using FORMULER to avoid injury.

WARNING: FAILURE TO FOLLOW THESE SAFETY INSTRUCTIONS COULD RESULT IN FIRE, ELECTRIC SHOCK OR OTHER INJURY OR DAMAGE. ELECTRICAL EQUIPMENT CAN BE HAZARDOUS IF MISUSED. OPERATION OF THIS PRODUCT, OR SIMILAR PRODUCTS, MUST ALWAYS BE SUPERVISED BY AN ADULT. DO NOT ALLOW CHILDREN ACCESS TO THE INTERIOR OF ANY ELECTRICAL PRODUCT AND DO NOT PERMIT THEM TO HANDLE AND CABLES.

SYMBOLS ON THE EQUIPMENT

This is a universal recycling symbol indicating that the battery cannot be disposed of in the trash and must be recycled according to the regulations and/or ordinances of the local community.

To reduce the risk of personal injury, electric shock, fire, or damage to the equipment, observe the following precautions:

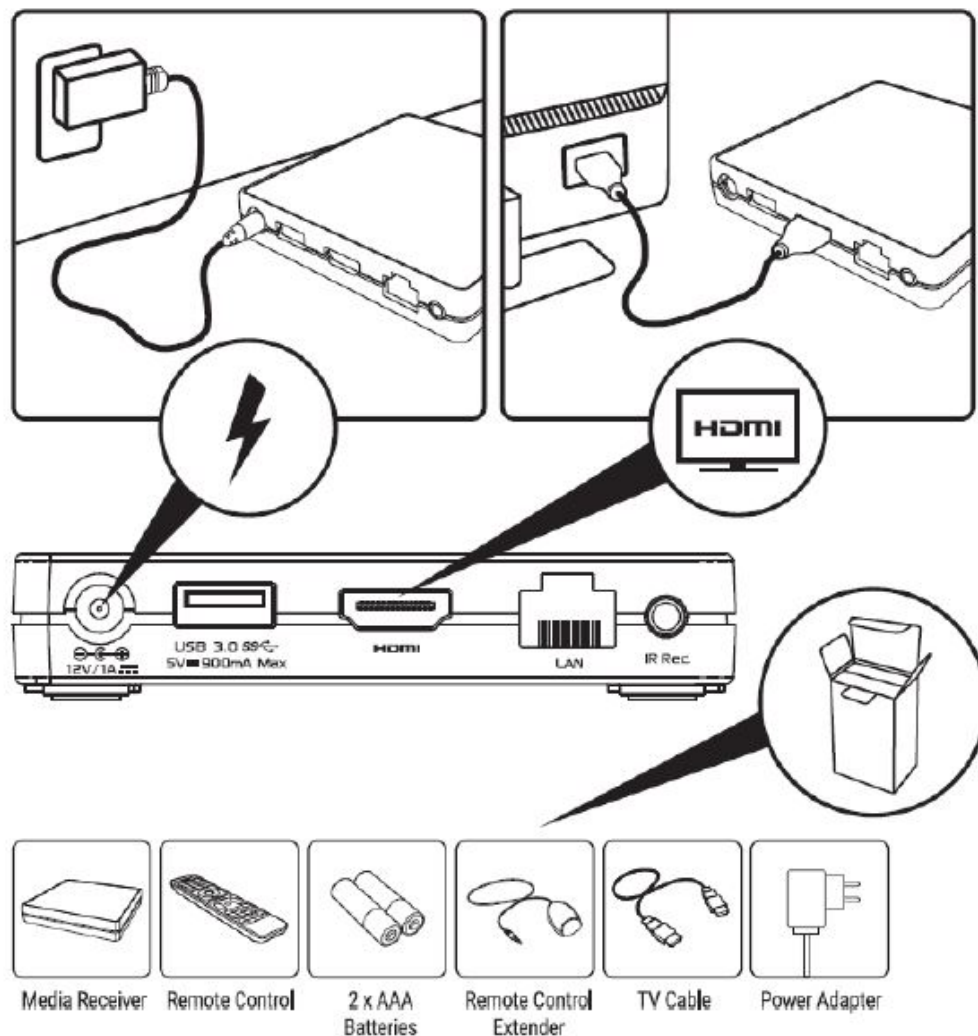
Follow all cautions and instructions marked on the equipment

- Do not bend, drop, crush, puncture, incinerate, or push objects into openings of FORMULER.
- Do not connect or disconnect any cables or perform maintenance or reconfiguration of this product during an electrical storm.
- Do not use FORMULER in wet locations. In case FORMULER gets wet, unplug all cables and turn off before cleaning, and allow it to dry thoroughly before turning it on again.
- Never turn on any equipment when there is evidence of fire, water, or structural damage.
- Place the product away from heat sources.
- Never force a connector into a port. Make sure the connector matches the port before inserting.
- Always use a FORMULER approved power adapter. Do not connect or disconnect the AC Power Adapter with wet hands. The power adapter is intended for indoor use only.

- Operation the AC adapter in ~ ventilated area.
- Do no make mechanical or electrical modifications to the equipment.
- Never attempt to repair FORMULER yourself. Do not attempt to open, disassemble the device.
You run the risk of electric shock.
- Operate FORMULER in a place where the temperature is always between 5 and 30 degrees Celsius.
- Use this product only with approved equipment and/ or accessories.

POWER RATING : 12 VDC, 1.0A

INSTALL



Need more help?

Get the most out of your FORMULER Set Top Box.
Check out our FAQs, instructional videos and user forums.

<https://support.formuler.tv>

Help Desk

<https://www.formuler-support.tv>

Official Forums

<https://www.youtube.com/c/formuler>

Youtube

@FormulerTV

Twitter

@FormulerOfficial

Facebook

FCC Warning

This device complies with part 15 of the FCC rules. Operation is subject to the following two conditions:

1. this device may not cause harmful interference, and
2. this device must accept any interference received, including interference that may cause undesired operation.

Changes or modifications not expressly approved by the party responsible for compliance could void the user's authority to operate the equipment.


NOTE: This equipment has been tested and found to comply with the limits for a Class B digital device, pursuant to part 15 of the FCC Rules. These limits are designed to provide reasonable protection against harmful interference in a residential installation. This equipment generates uses and can radiate radio frequency energy and, if not installed and used in accordance with the instructions, may cause harmful interference to radio communications. However, there is no guarantee that interference will not occur in a particular installation. If this equipment does cause harmful interference to radio or television reception, which can be determined by turning the equipment off and on, the user is encouraged to try to correct the interference by one or more of the following measures:

- Reorient or relocate the receiving antenna.
- Increase the separation between the equipment and receiver.
- Connect the equipment into an outlet on a circuit different from that to which the receiver is connected.
- Consult the dealer or an experienced radio/TV technician for help.

Radiation Exposure Statement

This equipment complies with FCC radiation exposure limits set forth for an uncontrolled environment. This equipment should be installed and operated with minimum distance 20cm between the radiator and your body.

Documents / Resources

	FORMULER B08DP6SWB1 Z Alpha Android Dual Band Smart Learner [pdf] User Guide ZALPHA, 2AV9UZALPHA, B08DP6SWB1 Z Alpha Android Dual Band Smart Learner, B08DP6SWB1, Z Alpha Android Dual Band Smart Learner
---	---