

Forever BT03 Mini BLE Gateway



Forever BT03 Mini BLE Gateway User Manual

[Home](#) » [FOREVER](#) » Forever BT03 Mini BLE Gateway User Manual 

Contents

- [1 Forever BT03 Mini BLE Gateway](#)
- [2 Product Usage Instructions](#)
- [3 FAQ](#)
- [4 Presentation](#)
- [5 Specification](#)
- [6 Checklist before usage:](#)
- [7 How to set up](#)
- [8 FCC Statement](#)
- [9 Documents / Resources](#)
 - [9.1 References](#)



Forever BT03 Mini BLE Gateway



Specifications

- **Model:** BT03
- **Size:** 45*45mm
- Mini BLE Gateway

Product Usage Instructions

Checklist before usage

1. Your smartphone is connected to a 2.4GHz Wi-Fi network.
2. Input the correct Wi-Fi password.

How to set up

1. Use your smartphone to scan below QR code below, or search the Smart Life app in the Google Play Store or APP Store to download and install.
2. Connect your mobile to your Wi-Fi router, click + in the upper right corner of the homepage or click Add Device. Your smartphone must be Android 4.4+ or iOS 8.0+.
3. Supply power to the gateway with a supplied charging cable.

Bluetooth Mode

Turn on the bluetooth on your mobile, the app will search the nearby device, enter the wifi name and password, it will connect to the App automatically. If numbers of devices connected to the Wi-Fi router reach the limit, you can try to disable the device to vacate the channel or try another Wi-Fi router.

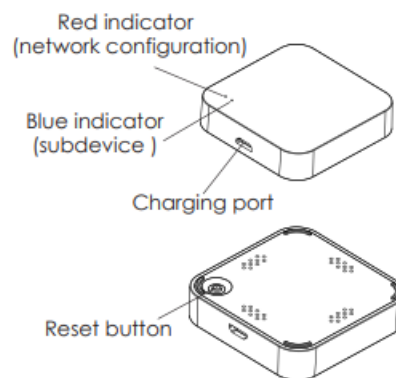
Wi-Fi Mode

Select Wireless Gateway (BLE) from Gateway Control, then select Wi-Fi Mode, make sure the blue indicator is on and the red indicator is blinking slowly. Enter the wifi name and password, connect your mobile to the device's hotspot: SmartLife-XXXX, then click to return to the App interface, it will connect. Click + Add device, make sure the LED indicator of the subdevice is blinking, App will search the device automatically. After the device is added, you can monitor or control it remotely.

FAQ

- **Q:** What should I do if the red indicator is not showing during network configuration?
- **A:** If the red indicator is not showing during network configuration, please ensure that your smartphone is properly connected to a 2.4GHz Wi-Fi network and that the correct Wi-Fi password is entered.
- **Q:** How do I reset the Mini BLE Gateway?
- **A:** To reset the Mini BLE Gateway, locate the reset button on the device and press it for a few seconds until the indicators blink or reset as per the user manual instructions.

Presentation



Specification

- **Size:** 50*50*11mm
- **Input:** DC 5V/1A
- **Bluetooth:** Low-power 4.2
- **Working temperature:** 0°C~50°C
- **Working humidity:** 10%~85% RH
- **Storage temperature:** 0°C~70°C
- **Storage humidity:** 5%~95% RH

Checklist before usage:

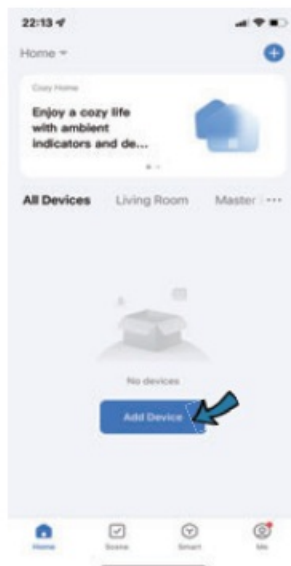
- Your smartphone has connected to a 2.4GHz Wi-Fi network.
- Input the correct Wi-Fi password.
- Your smartphone must be Android 4.4 + or iOS 8.0 +.
- If numbers of devices connected to the Wi-Fi router reach the limit, you can try to disable the device to vacate the channel or try another Wi-Fi router.

How to set up

1. Use your smartphone to scan below QR code below, or search the “Smart Life” app in the Google Play Store or APP Store to download and install it.



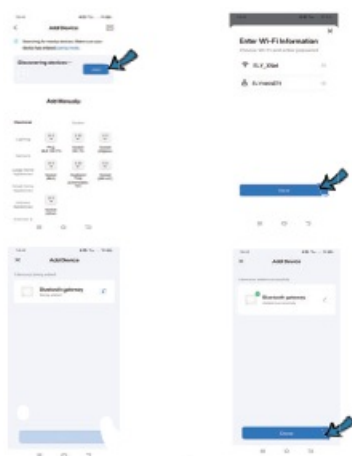
2. Create an account with your mobile number and authentication code.
3. Connect your mobile to your Wi-Fi router, click “+” in the upper right corner of homepage or click “Add Device” .



4. Supply power to the gateway with supplied charging cable.

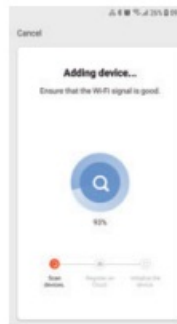
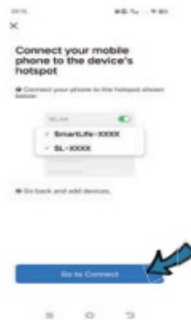
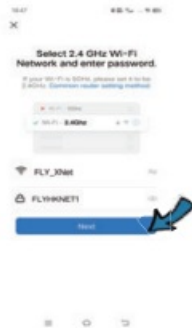
Bluetooth Mode

Please turn on the bluetooth on your mobile, the app will search the nearby device, enter the wifi name and password, and it will connect to the App automatically.

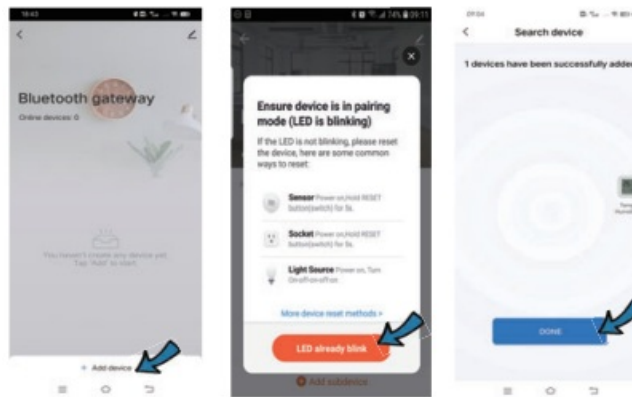


Wi-Fi Mode

Select “Wireless Gateway (BLE)” from “Gateway Control”, then select “Wi-Fi Mode”, make sure the blue indicator is on and red indicator is blinking slowly. Enter your wifi name and password, connect your mobile device’s hotspot: “SmartLife-XXXX”, then click to return to the App interface, it will connect.



Click "+ Add device", and make sure the LED indicator of the subdevice is blinking, The App will search the device automatically. After a device is added, you can monitor or control it remotely.\



FCC Statement

This equipment has been tested and found to comply with the limits for a Class B digital device, pursuant to part 15 of the FCC rules. these limits are designed to provide reasonable protection against harmful interference in a residential installation. This equipment generates, uses and can radiate radio frequency energy and, if not installed and used in accordance with the instructions, may cause harmful interference to radio communications. However, there is no guarantee that interference will not occur in a particular installation. If this equipment does cause harmful interference to radio or television reception, which can be determined by turning the equipment off and on, the user

encouraged to try to correct the interference by one or more of the following measures:

- Reorient or relocate the receiving antenna.
- Increase the separation between the equipment and the receiver.
- Connect the equipment into an outlet on a circuit different from that to which the receiver is connected.
- Consult the dealer or an experienced radio/TV technician for help.

To assure continued compliance, any changes or modifications are expressly approved by the party. Responsible for compliance could void the user's authority to operate this equipment. (Example-use only shielded interface cables when connecting to computer or peripheral devices). This equipment complies with Part 15 of the FCC Rules. Operation is subject to the following two conditions:

1. This device may not cause harmful interference ,and
2. This device must accept any interference received, including interference that may cause undesired operation.

FCC Radiation Exposure Statement: The equipment complies with FCC Radiation exposure limits set forth for uncontrolled environments. This equipment should be installed and operated with minimum distance 20cm between the radiator and your body.

Documents / Resources



[Forever BT03 Mini BLE Gateway](#) [pdf] User Manual
BT03 Mini BLE Gateway, BT03, Mini BLE Gateway, BLE Gateway, Gateway

References

- [User Manual](#)

[Manuals+](#), [Privacy Policy](#)

This website is an independent publication and is neither affiliated with nor endorsed by any of the trademark owners. The "Bluetooth®" word mark and logos are registered trademarks owned by Bluetooth SIG, Inc. The "Wi-Fi®" word mark and logos are registered trademarks owned by the Wi-Fi Alliance. Any use of these marks on this website does not imply any affiliation with or endorsement.