



HSV Custom Framed Prints: A Complete Photo Taking Guide

Taking a high-resolution photo with your phone for printing requires a few considerations to ensure the image maintains quality when enlarged. Here's a step-by-step guide:

Contents [[hide](#)]

- [1 Check Your Camera Settings](#)
- [2 Use the Full-Frame Camera](#)
- [3 Enable HDR Mode](#)
- [4 Keep Your Lens Clean](#)
- [5 Stabilize Your Phone](#)
- [6 Use Proper Lighting](#)
- [7 Focus on the Subject](#)
- [8 Check for the Right Aspect Ratio](#)
- [9 Use Editing Apps \(Optional\)](#)
- [10 Check Image Resolution for Printing](#)
- [11 Export the Image in the Highest Quality](#)
- [12 Documents / Resources](#)
 - [12.1 References](#)

Check Your Camera Settings

- Set the camera to its highest resolution: Most smartphones automatically take high-res photos by default, but double-check that your camera is set to the highest

resolution.

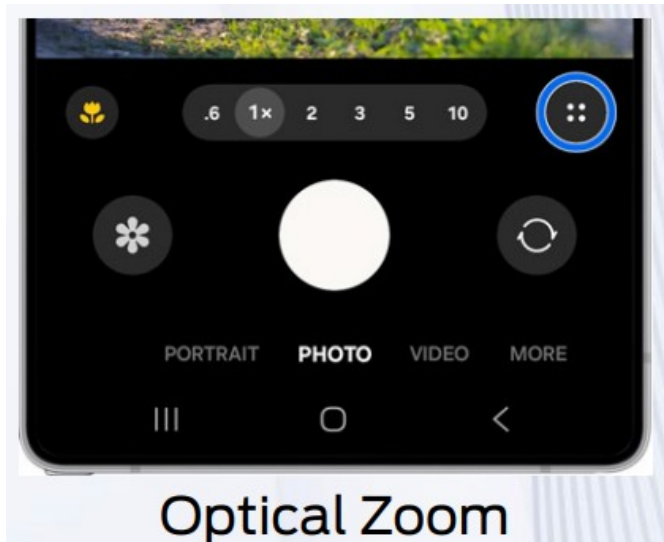


- For iPhones: Go to Settings > Camera > Formats, and select High Efficiency to ensure maximum quality.



- For Android: Open your camera app settings, find Picture Size, and select the highest resolution available (e.g., 12 MP, 48 MP).

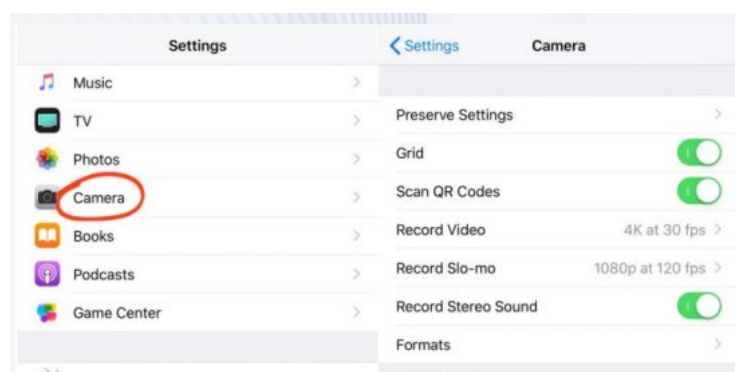
Use the Full-Frame Camera



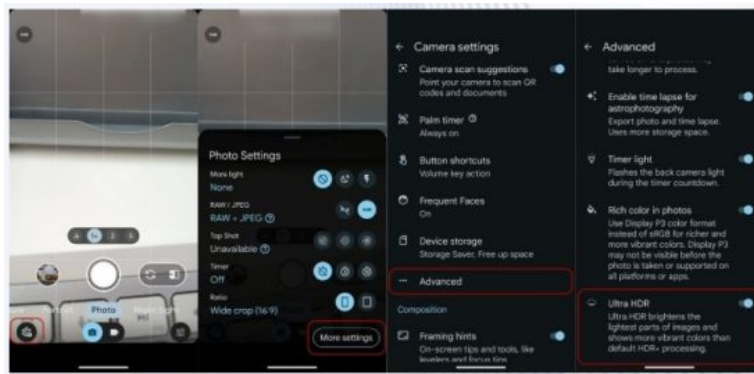
Note: Camera mobile settings models

Enable HDR Mode

- HDR (High Dynamic Range) helps capture more detail in both highlights and shadows, ensuring a well-balanced image, especially in bright or dark conditions. This is particularly useful for scenes with varied lighting.
- On iPhones: HDR is enabled automatically for most models (or you can turn it on in Camera Settings).



- On Android: It's usually available in the camera settings or the camera app's menu.



Keep Your Lens Clean

- A smudged lens can reduce the clarity of your photo. Use a microfiber cloth to clean the lens before taking the shot.



Stabilize Your Phone



- Use a tripod or steady surface: This reduces blur caused by hand movement, especially in low light conditions.
- Hold your phone with both hands and keep your elbows close to your body to keep the phone stable.



Use Proper Lighting

- Natural light is best, so try to shoot during the day near windows, or in an outdoor setting if possible. Avoid harsh direct sunlight or strong shadows. If indoors, use soft, diffused lighting.



Focus on the Subject

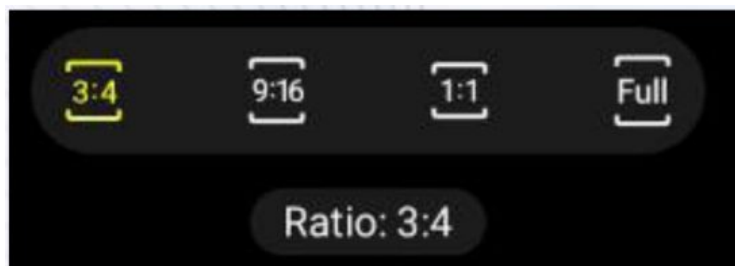
- Tap to focus on your subject, especially if you're shooting something small or detailed.

Most phones allow you to tap the screen to adjust focus manually.



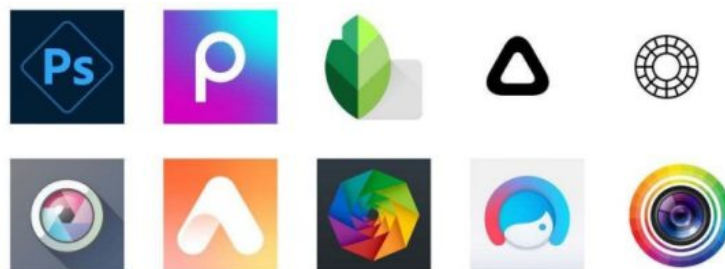
Check for the Right Aspect Ratio

- Most print photos are 4×6 inches, 5×7 inches, or 8×10 inches. Make sure the image's aspect ratio matches the desired print size to avoid cropping when printing.
- You can crop or adjust the aspect ratio after taking the photo, but it's better to take the picture in the proper orientation and frame. On Android: It's usually available in the camera settings or the camera app's menu.



Use Editing Apps (Optional)

- After taking your photo, you can edit it to improve its quality. Apps like Adobe Lightroom, VSCO, or Snap seed offer advanced controls to adjust exposure, sharpness, and other elements to make your photo look its best for printing.



Check Image Resolution for Printing

- For high-quality prints, aim for a resolution of 300 DPI (dots per inch). The formula to

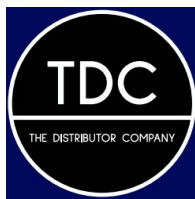
determine the print size based on resolution is:

- Width of photo in pixels ÷ 300 = Width of photo in inches
- Height of photo in pixels ÷ 300 = Height of photo in inches
- Example: If your photo is 4000×3000 pixels, you can print it at about 13.3 inches x 10 inches at 300 DPI.

Export the Image in the Highest Quality

- Save the image as a JPEG or PNG file with the highest quality setting available.
- Avoid compressing the file, as it will reduce the quality needed for printing.can print it at about 13.3 inches x 10 inches at 300 DPI.

By following these tips, you should be able to capture a high-resolution image suitable for printing.




fordstore.com.au



Official Licensed Product

Documents / Resources

	<p>Ford Framed Print HSV Custom Framed Prints [pdf] User Guide</p> <p>Framed Print HSV Custom Framed Prints, HSV Custom Framed Prints, Custom Framed Prints, Framed Prints</p>
---	--

References

- [User Manual](#)

Custom Framed Prints, Ford, Framed Print HSV Custom Framed Prints, Framed Prints, HSV Custom Framed

Leave a comment

Your email address will not be published. Required fields are marked *

Comment *

Name

Email

Website

☐ Save my name, email, and website in this browser for the next time I comment.

Post Comment

Search:

e.g. whirlpool wrf535swhz

Search

[Manuals+](#) | [Upload](#) | [Deep Search](#) | [Privacy Policy](#) | [@manuals.plus](#) | [YouTube](#)

This website is an independent publication and is neither affiliated with nor endorsed by any of the trademark owners. The "Bluetooth®" word mark and logos are registered trademarks owned by Bluetooth SIG, Inc. The "Wi-Fi®" word mark and logos are registered trademarks owned by the Wi-Fi Alliance. Any use of these marks on this website does not imply any affiliation with or endorsement.