

[Skip to content](#)

Manuals+

User Manuals Simplified.



FODSPORTS FX2 Helmet Bluetooth Intercom User Manual

[Home](#) » [Fodsports](#) » FODSPORTS FX2 Helmet
Bluetooth Intercom User Manual

FODSPORTS FX2 Helmet Bluetooth Intercom User Manual



Contents [hide](#)

[1 Package Contents](#)

[2 Charging](#)

[3 Installation Instructions](#)

[4 General Operation Instructions](#)

[5 Pairing the FX2 with a Bluetooth Device](#)

[6 Bluetooth Intercom Talk](#)

[6.1 Pairing two FX2 headsets to talk](#)

[6.2 Pairing three FX2 headsets to talk](#)

[7 Technical Specifications](#)

[8 Maintenance and Care](#)

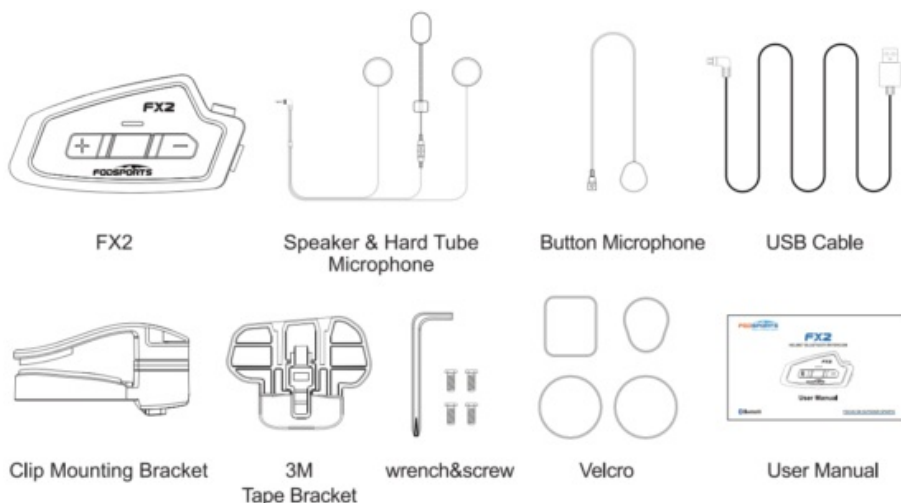
[9 After-Sale Service](#)

[10 Contact Us](#)

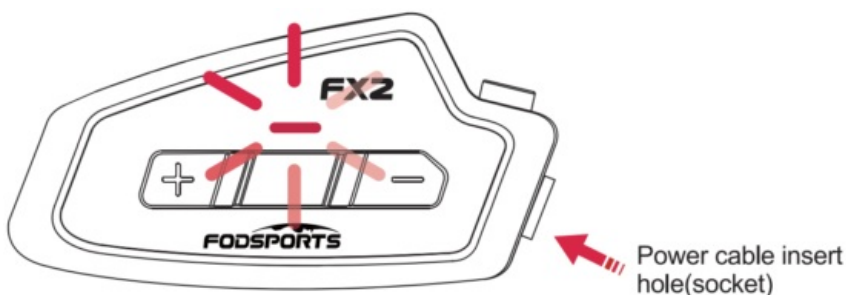
[11 Documents / Resources](#)

[12 Related Posts](#)

Package Contents

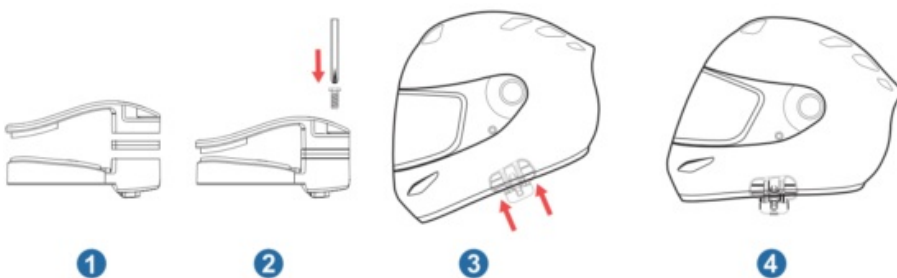


Charging

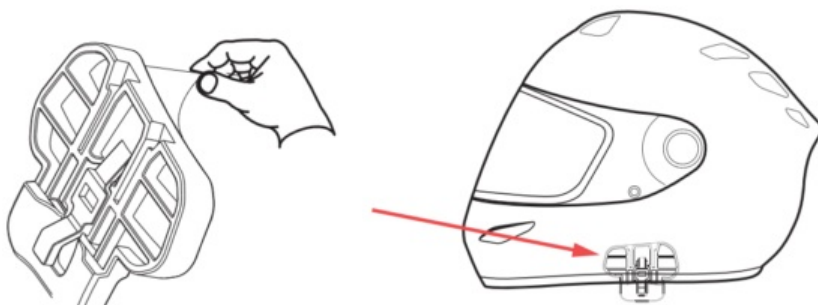


1. When charging, the red light flashes, and when it is full, the blue light turns on.(As shown below). Please charge before using for the first time.
2. Please use a qualified charger 5V/1A+0.5A.
3. Please keep charging at least once every 2 months if the product is not used for a long time.

Installation Instructions



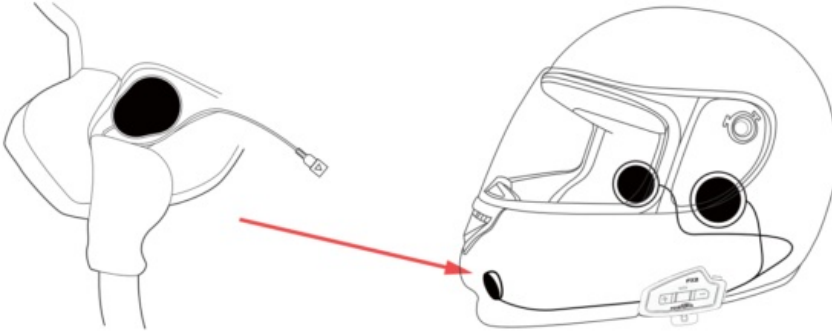
1. If there are any problems with mounting the bracket, you may use the 3M tape bracket. Peel off the protective backing sheet of the 3M tape and adhere the bracket onto the helmet. Press for 15 seconds and glue dry for 24 hours.



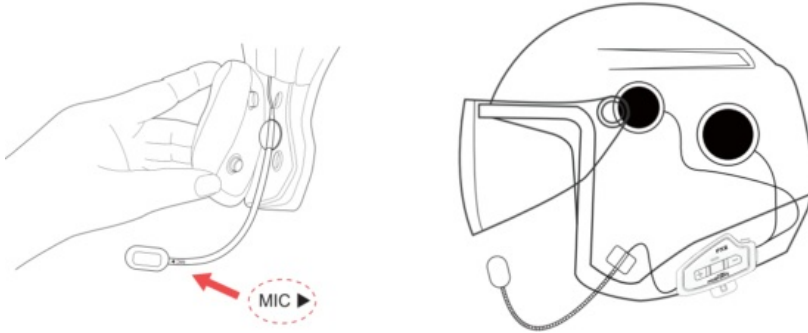
Note: Even though the 3M Tape mounting is provided for convenience, FODSPORTS recommends using the bracket mounting. The 3M Tape mounting is offered as an option that you may use at your own risk and responsibility, FODSPORTS does not assume any responsibility for use of it.

2. Locate an area in the nose section just to the left of center to mount the button microphone for full helmets .

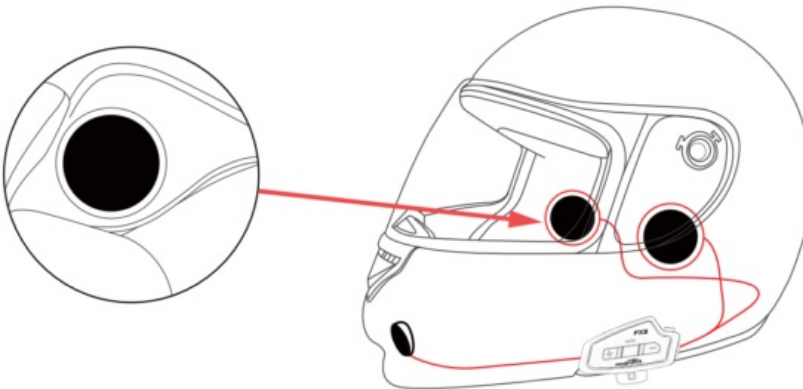
Place the button microphone to the velcro pad and connect it to the connector of the headset.



If you are installing into an open face helmet, please adjust the direction of the microphone so that the triangular mark on the microphone is pointing towards your mouth.

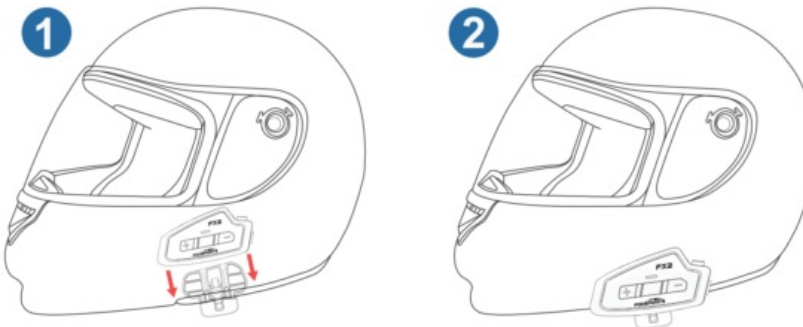


3. Place the speakers into the cheek pads. Push the speakers and microphone firmly against the Velcro pads.
4. Press the wires into the gap between the helmet liner and shell.

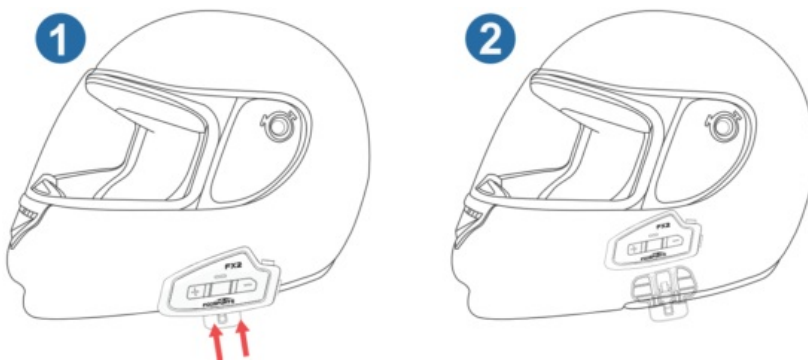


Note: The speaker with shorter wire is for the left ear and the speaker with the longer one is for the right ear, to enhance the FM radio reception as well.

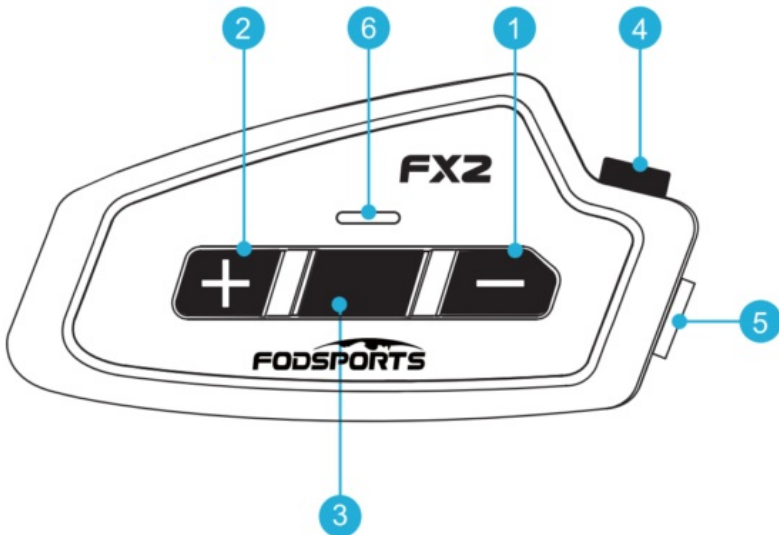
5. Mount the FX2 main unit on the bracket. Slide the main unit down onto the bracket until it clicks firmly into the bottom portion of the bracket.



6. To remove the host of the FX2 from the bracket, just push it up from the bracket.



General Operation Instructions



1. Volume-
2. Volume+
3. Power button
4. Intercom button
5. Earphone port(charging)
6. LED Indicator

Switch On/Off

Switch On: Press and hold the “Power button” for about 3 seconds to switch on. The light will flash blue only.

Switch Off: Press and hold the “Power button” for about 3 seconds to switch off. The blue light will turn red then off.

Power Detect & Notification Function

FX2 has power detect Function, when device is on, short press “Power button” twice, recorded voice message will tell you:

- Battery 100%
- Battery 80%
- Battery 50%
- Battery 25%
- Battery Low

Low Battery Alert

When the main battery unit falls below 20% charge the light will flash red and there will be a tone alert every five minutes until the condition is remedied.

Cellphone

Answer incoming call: The unit will automatically answer the incoming phone call after 12 seconds. Or press the "Power button" to answer the incoming phone call immediately.

Reject incoming call: Double-click "Power button".

End active phone call: Short press the "Power button" to end a phone call.

Last phone call number redial: When in standby mode, double click the Volume + button to redial the last phone call number.

- Volume Up: Short press "Volume+ button".
- Volume Down: Short press "Volume- button".

Switch manual/automatic answering calls: While in standby, press and hold the "Volume –" button for 7 seconds. (Default: answer incoming calls automatically)

Note: In some cases (e.g. high-power RF radio influence or metal blocking), the headset might disconnect from the mobile phone. Please short press the "Power button" to reconnect.

Voice Command

When in standby mode, double click the "Volume- button" to activate Siri or S Voice. You will hear a beep sound, and then there will be a voice prompt from the mobile phone. Simply speak the name from your phone list to dial.

Music Function

- **Play:** Short press "Power button" .
- **Pause:** Short press "Power button" .
- **Play Previous:** Double click "Volume- button".
- **Play Next:** Double click "Volume+ button".
- **Volume Up:** Short press "Volume+ button".
- **Volume Down:** Short press "Volume- button" .

Note: When in music mode from phone, you will need to adjust the volume on phone as well to get louder volume.

FM Function

- FM ON: Long press "Volume+ button" for 3 seconds.
- FM OFF: ,Long press "Volume+ button" for 3 seconds.
- Volume Up: Short press "Volume+ button" .
- Volume Down: Short press "Volume- button" .
- Search channels: Double click "Volume- button" / "Volume- button".

Intercom Function

- Switch Intercom On: Short press "Intercom button" .
- Switch Intercom Off: Short press "Intercom button".
- Volume Up: Short press "Volume+ button" .
- Volume Down: Short press "Volume- button" .

Memory Clear(Reset)

To clear the previous pairing, long press "Volume+" and "Volume—" button for 3 seconds simultaneously until the red light flashes.

Switch prompt tone

Switch prompt tone(English/Japanese):While in standby, press and hold the "Volume –" button for 10 seconds.

Pairing the FX2 with a Bluetooth Device

Before using the FX2 Bluetooth headset with any Bluetooth device for the first time you need to pair them. It can be paired with mobile phones, audio devices such as MP3 or GPS, and other FODSPORTS Bluetooth headsets. This pairing operation is only required once for each Bluetooth device, and the headset will remain pair with each device and automatically reconnects to the paired devices when within range.

Pairing a Mobile Phone

1. **Step 1.** Start with the unit turned off, press and hold the “Power button” on both units for 9 seconds until the LED light alternates between red and blue.
2. **Step 2.** Search for Bluetooth devices on your mobile phone. The headset will be listed on your mobile phone as “FODSPORTS FX2”.
3. **Step 3.** Enter 0000 for the PIN if needed.
4. **Step 4.** Your mobile phone will confirm that pairing is complete. The blue light flash after they are connected.



Pairing Bluetooth GPS Navigation

- **Step 1.** The pairing procedure is the same with “Pairing Mobile Phone”
- **Step 2.** Please refer to the manual of the Bluetooth GPS navigation for details.
- **Step 3.** You can listen to Bluetooth voice instructions from Bluetooth GPS navigation.

Bluetooth Intercom Talk

Pairing with other FX2 headsets for Intercom Talk :

The FX2 can be paired with other FX2 up to three units for full duplex Bluetooth intercom talk. There is a different pairing process for each scenario: two intercoms and three intercoms. When more than two units are connected, there are Last units and Bridge units. To maximize range, the riders should stay in the same order that the units are connected.

Note: Prior to pairing units for communications before riding. We strongly suggest (to clear the previous connection from the intercom units) that existing connections be cleared from unit. To clear existing connections, press and hold the “volume + ” and “volume —” together until the red light flash, all previous connections are cleared from unit.

*** There are two ways pairing model, you can choose one of two models.**

Channel -1: When both unit A and B are turned off , then simultaneously hold the “Power button” on both units for 9 seconds. Then click the “Intercom button” on either unit.

Channel -2: Turn on both units , then simultaneously hold the “Intercom button” and “Volume button” on both units for 3 seconds. Then click the “Intercom button” on either unit.

*** Turn off the pairing mode:** If you need the device to exit the pairing mode, double-click the “Power” button.

Pairing two FX2 headsets to talk



2 Persons Full Duplex Intercom Chatting

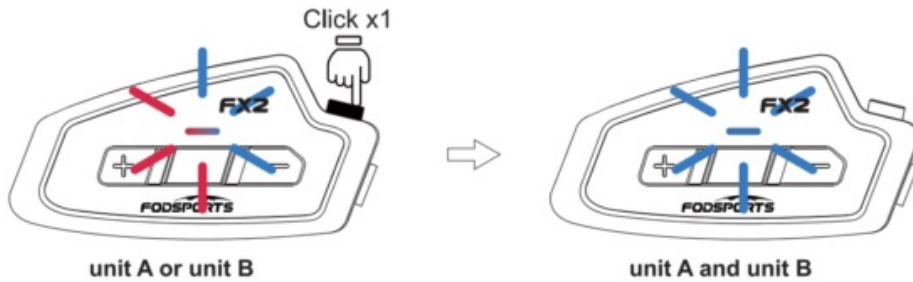
Tips: To start an intercom talk, you should pair the two units firstly.

Step 1: Pairing two FX2 units firstly.

When both unit A and B are turned off, then simultaneously hold the “Power button” on both units for 9 seconds to enter pairing mode for channel-1, until the red and blue light flash on both units .

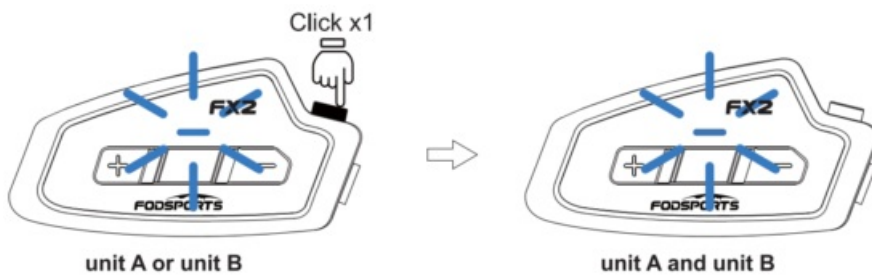


Then click the “Intercom button” on either unit, the blue light will flashes quickly on this unit. Once the pairing is complete you will see the blue light flashing on both units .



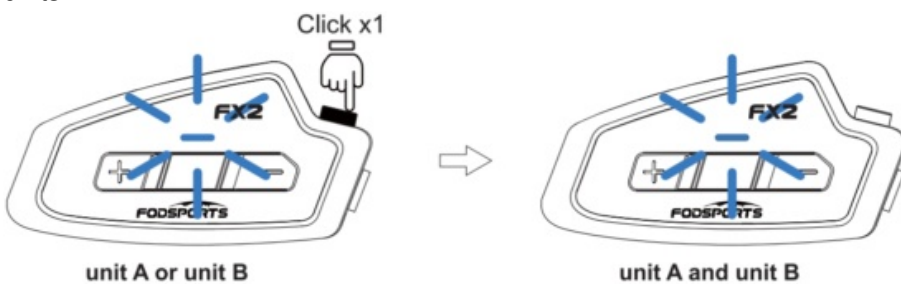
Step 2: Start an intercom talk

Click the “Intercom button” on one unit to start an intercom talk. Wait 3-5 seconds for the unit to connect. When in Intercom mode, you can see the blue light flashes simultaneously on both units.



Step 3: Disconnect an Intercom talk

Click the “Intercom button” on one unit to quit the intercom. After disconnected you will see blue light flashing on both units



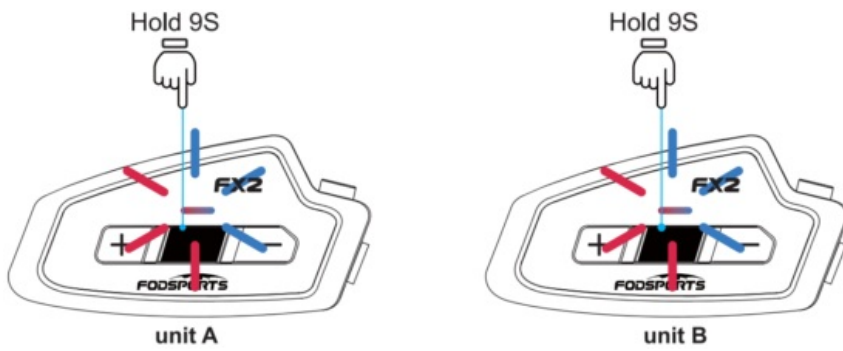
Pairing three FX2 headsets to talk



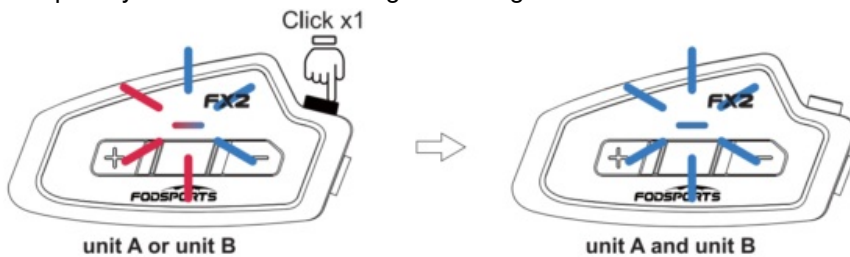
3 Persons Toggle Intercom Chatting

Step 1: Pairing unit A with unit B firstly.

When both unit A and B are turned off, then simultaneously hold the “Power button” on both units for 9 seconds to enter pairing mode for channel-1, until the red and blue light flash on both units .

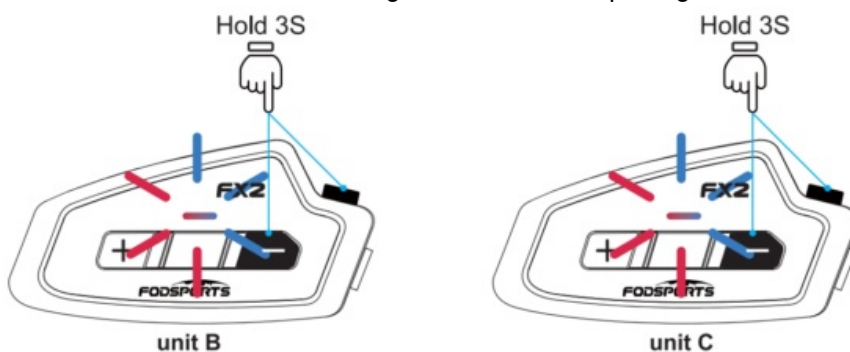


Then click the “Intercom button” on either unit, the blue light will flash quickly on this unit. Once the pairing is complete you will see the blue light flashing on both units.

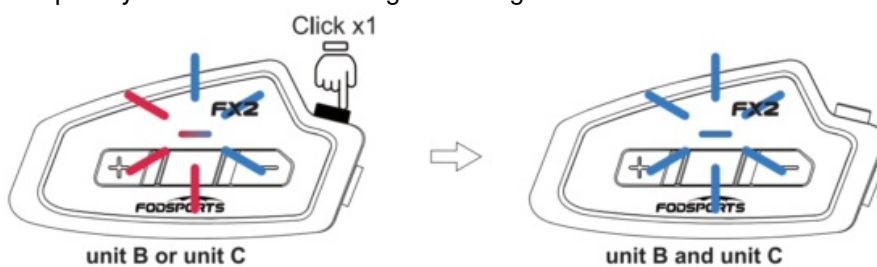


Step 2: Then pairing unit B with unit C

Turn on unit C. Simultaneously hold the “Intercom button” and “Volume- button” on both unit B and unit C for 3 seconds until the red and blue lights flash to enter pairing mode for channel-2.



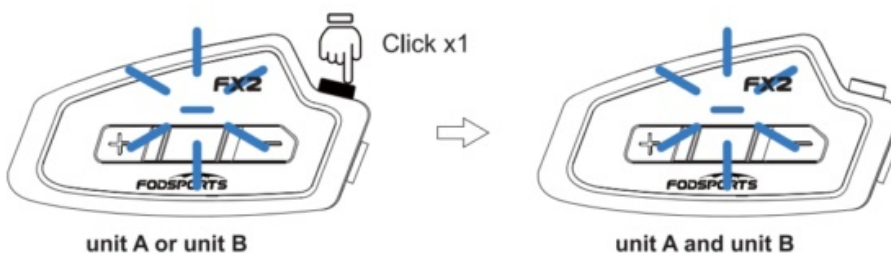
Then press the “Intercom button” on either unit until the blue light flashes quickly on this unit. Once the pairing is complete you will see the blue light flashing on both units.



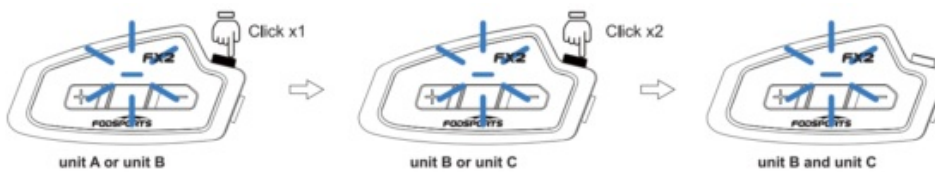
Step 3: Start 3 Persons Toggle intercom talk

After all three units are paired, unit B will be set as the bridge unit.

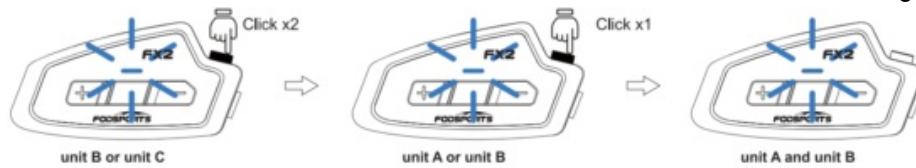
1. Click the “Intercom button” on unit A or unit B to connect the two units. unit A and unit B will start talking.



2. Click the “Intercom button” on unit A or unit B to disconnect the intercom talk. Double click the “Intercom button” on unit C or unit B to connect the two units. unit B and unit C will start talking. Toggle intercom talk complete.

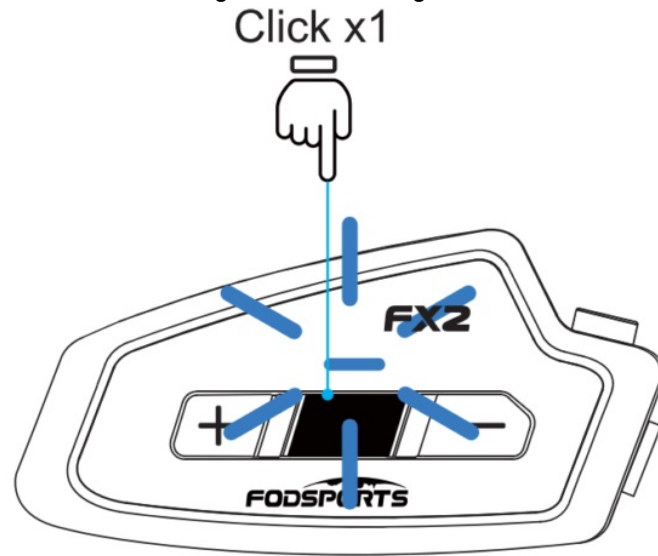


3. Double click the "Intercom button" on unit B or unit C to disconnect the intercom talk. Click the "Intercom button" on unit A or unit B to connect the two units. unit A and unit B will start talking. Toggle intercom talk complete.

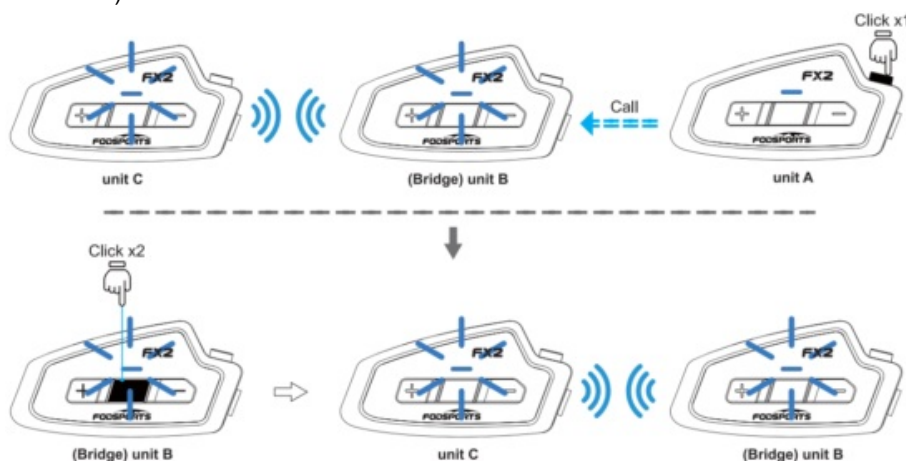


4. Quickly switch intercom

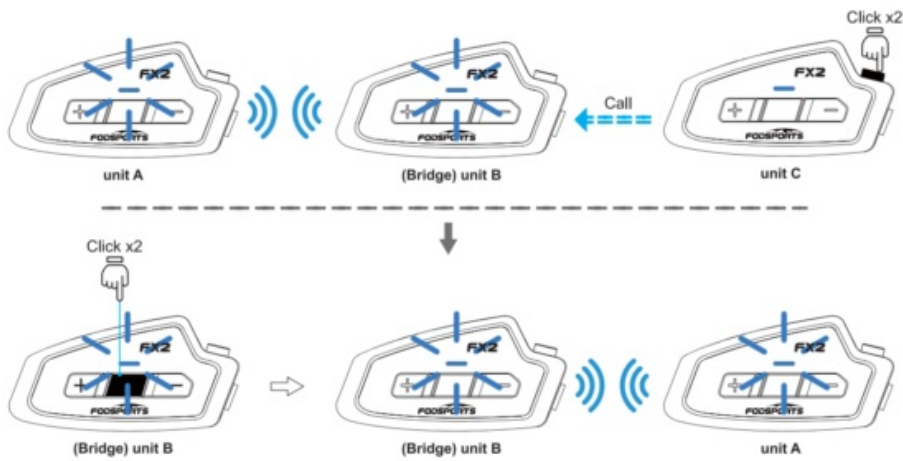
Situation 1: During intercom talking, Click the "Power button" to exit intercom mode.



Situation 2: During unit B and unit C intercom talking, unit A wants to talk to unit B, click "Intercom button" of unit A, unit B can hear the intercom call ringtone. Double-click "Power button" of unit B to talk to unit A directly. (Double-click the "Intercom button" of unit B within 10 seconds of hearing the intercom call ringtone to be effective.)



Situation 3: During unit A and unit B intercom talking, unit C wants to talk to unit B, Double-click "Intercom button" of unit C, unit B can hear the intercom call ringtone. Double-click the "Power button" of unit B to talk to unit C directly. (Double-click the "Power button" of unit B within 10 seconds of hearing the intercom call ringtone to be effective.)



Technical Specifications

- **Bluetooth Support:** HSP,HFP,A2DP,AVRCP, AGHSP
- **Battery:** lithium battery, 850mA , 3.7v
- **Dimensions:** 8.9cm * 4.3cm * 2.5cm
- **Weight:** SOG, 100G(Include Headphone & Mic Kits)
- **Frequency Range:** 2.4G-2.485G
- **Operating temperature:** -20 C -50 C
- **Certification:** CE FCC ROHS BQB TELEC
- **USB Adapter standard charge voltage:** DC 5V+0.2V
- **USB Adapter standard charge circuit:** DC 1A+0.5A
- **Charging time:** 2-3 hours

*The FX2 operates in the following order of priority:

1. Phone call (highest)
2. Intercom
3. Music, FM radio (lowest)
4. A lower-priority Function is always interrupted by a higher-priority Function. For example, stereo music is interrupted by an Intercom call, and Intercom conversation is interrupted by an incoming mobile phone call.

Maintenance and Care

The FX2 should be treated with care and the following suggestions will help maintain your Warranty.

1. Do not use or store the device in dusty or dirty environments. Moving parts and electronic components can be damaged.
2. Do not store the device in high heat areas. High temperatures can shorten the life of electronic devices,damage batteries, and warp or melt certain plastics.
3. Do not store the device in cold temperature areas. When the device returns to its normal temperaturemoisture can form inside the device and damage electronic circuit boards.
4. Do not attempt to open the FX2 case.
5. Do not drop or knock the device. Rough handling can break internal circuit boards and fine mechanics.
6. Do not use harsh chemicals, cleaning solvents, or strong detergents to clean the device.
7. Do not paint the device. Paint can clog the moving parts and prevent proper operation. These suggestions apply equally to the headset main unit, speaker-microphone clamp unit, and power charger.

After-Sale Service

NOTE: This equipment has been tested and found to comply with the limits for a Class B digital device, pursuant to part 15 of the FCC Rules. These limits are designed to provide reasonable protection against harmful interference in a residential installation. This equipment generates uses and can radiate radio frequency energy and, if not installed and used in accordance with the instructions, may cause harmful interference to radio communications. However, there is no guarantee that interference will not occur in a particular installation. If this equipment does cause harmful interference to radio or television reception, which can be determined by turning the equipment off and on, the user is

encouraged to try to correct the interference by one or more of the following measures:

- Reorient or relocate the receiving antenna.
- Increase the separation between the equipment and receiver.
- Connect the equipment into an outlet on a circuit different from that to which the receiver is connected.
- Consult the dealer or an experienced radio/TV technician for help

Changes or modifications not expressly approved by the party responsible for compliance could void the user's authority to operate the equipment.

For any quality problem or missing accessories, especially pairing problem between 2 or more FX2 headsets, please feel free to contact us at email: winzon.cs@outlook.com. We're always here ready to help, will reply to you in 24 hours.

Contact Us

Manufacturer: Shenzhen winnerelec Industrial CO.,LTD

Address: 411-416 Room Social security building,
Honghua Bei, Road Gongming Street Guangming New
District, Shenzhen, China

Documents / Resources



[FODSPORTS FX2 Helmet Bluetooth Intercom](#) [pdf] User Manual

FX2, 2AQN2-FX2, 2AQN2FX2, FX2 Helmet Bluetooth Intercom, Helmet Bluetooth Intercom

[Manuals+](#),

- [home](#)
- [privacy](#)