

# FNW7851 Single Channel 2-Hole Flush Post Base Owner's Manual



## Contents

- [1 SPECIFICATIONS](#)
- [2 FNW7851 STRUT ACCESSORIES](#)
  - [2.1 SINGLE CHANNEL 2-HOLE FLUSH POST BASE](#)
  - [2.2 FEATURES](#)
  - [2.3 PRODUCT SPECIFICATIONS](#)
    - [2.3.1 Material](#)
    - [2.3.2 Finish](#)
    - [2.3.3 REFERENCE CHART](#)
- [3 Documents / Resources](#)
  - [3.1 References](#)
- [4 Related Posts](#)

## SPECIFICATIONS

### FNW7851 STRUT ACCESSORIES

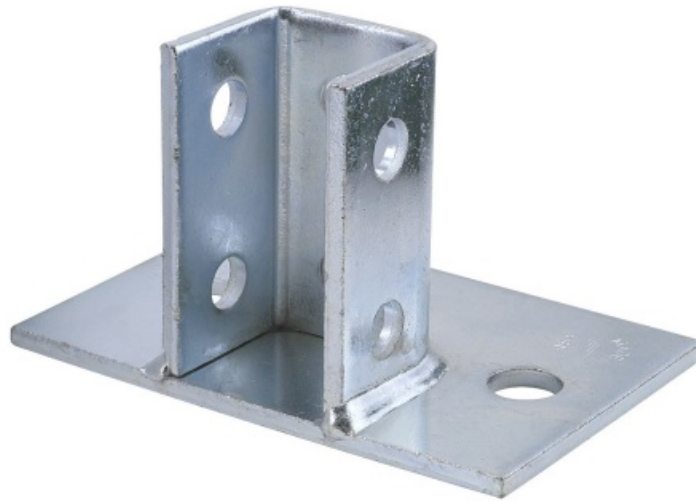
---

#### SINGLE CHANNEL 2-HOLE FLUSH POST BASE

Unistrut post bases are designed to securely fasten strut channel to multiple surfaces, including concrete. Post bases provide stability to strut installation and are available in a variety of finishes and configurations.

#### FEATURES

- Material is 1-5 /8" [41mm] wide x 1/4" [6mm] thick unless specified.
- Holes are 9 /16" (14mm) diameter, 13/16" [21mm] center to edge on 1-7/8" [48mm] centers unless specified.



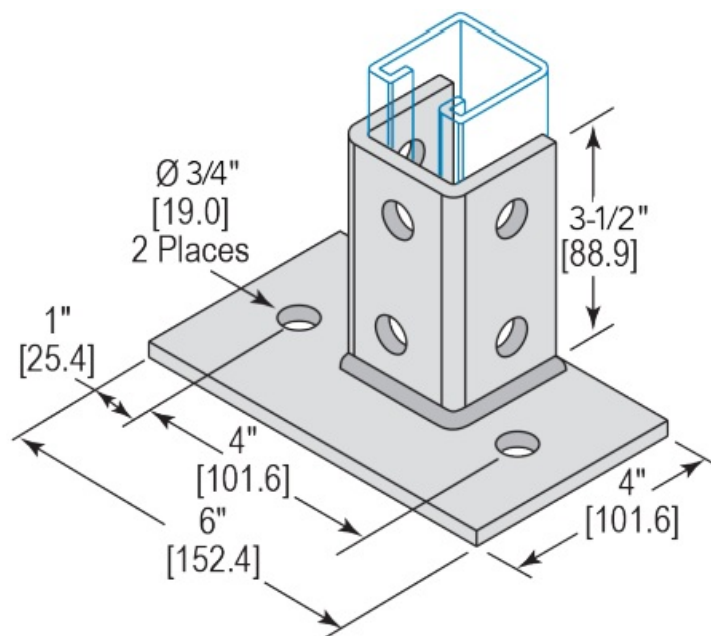
## PRODUCT SPECIFICATIONS

### Material

- Carbon steel - ASTM A1011-00 SS GR 33 or ASTM A1011-00CS Type B

### Finish

- Z - Electro-Galvanized (standard finish). Electroplating deposits zinc on the surface of the steel by electrolysis from a bath of zinc salts. Recommended for relatively dry indoor use.
- G - GN - Green Powder Coat. A polyester powder coating is electrostatically applied after fabrication. The powder is then baked on creating a 1.38 to 1.77 mil [35-45 m] thick coating. The hardness of this coating meets ASTM D-3363-74, the impact rating meets ASTM D-2794-93 and the gloss meets ASTM D-523-85. This creates a coating that is resistant to chipping, peeling and corrosion. Available in many colors by special order.
- HD - Hot Dip Galvanized After Fabrication. Fabricated product is dipped in molten zinc and is completely covered on all surfaces. Recommended for outdoor use. Coatings on FNW HD products meet ASTM A123/153. The zinc coating is typically 2.6 mils [66.0  $\mu\text{m}$ ] or 1.5 oz. per square foot [0.46 kg per square meter] per side.
- S4 - 304 Stainless steel - ASTM A240 (Type 304)
- S6 - 316 Stainless steel - ASTM A240 (Type 316)  
316 Stainless steel nuts - ASTM A276-03
- Y - Yellow zinc dichromate. A 0.5 mil [12.7 m] electro-galvanized zinc plating meeting ASTM B633 SC1 Type III is applied to the surface of the metal. Yellow dichromate is applied over the zinc. This results in a yellowish gold appearance and acts as a nonporous barrier sealant that is corrosion resistant and can be painted.



#### REFERENCE CHART

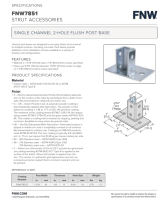
Catalog Number		FNW7851Z
Post Width	in.	1-5/8
	mm	41
Thickness	in.	1/4
	mm	6
Hole Size	in.	9/16
	mm	14
Weight	lbs	2.79
	kg	1.27

[FNW.COM](https://www.fnw.com)

©2024 Ferguson Enterprises, LLC 1124 7161512

We reserve the right to modify or improve the designs or specifications of our products at any time without notice.

#### Documents / Resources

	<p><a href="#">FNW FNW7851 Single Channel 2-Hole Flush Post Base [pdf] Owner's Manual</a></p> <p>FNW7851, FNW7851 Single Channel 2-Hole Flush Post Base, Single Channel 2-Hole Flush Post Base, 2-Hole Flush Post Base, Flush Post Base, Base</p>
---	---

#### References

- [User Manual](#)

## **Manuals+. Privacy Policy**

This website is an independent publication and is neither affiliated with nor endorsed by any of the trademark owners. The "Bluetooth®" word mark and logos are registered trademarks owned by Bluetooth SIG, Inc. The "Wi-Fi®" word mark and logos are registered trademarks owned by the Wi-Fi Alliance. Any use of these marks on this website does not imply any affiliation with or endorsement.