

FMOUSE M101 Wireless Mouse User Manual

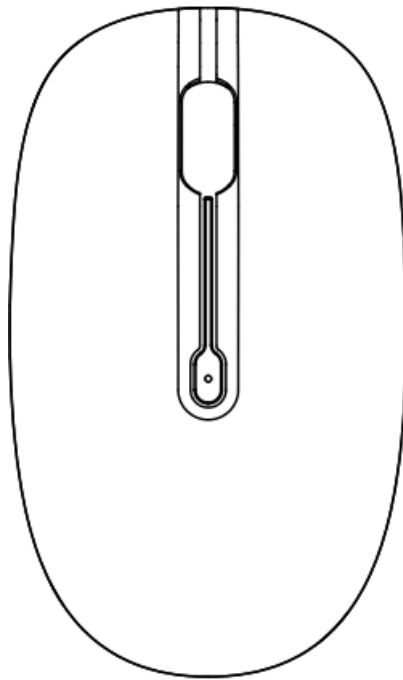
[Home](#) » [FMOUSE](#) » FMOUSE M101 Wireless Mouse User Manual

Contents [[hide](#)]

- [1 FMOUSE M101 Wireless Mouse](#)
- [2 Specification](#)
- [3 OVERVIEW](#)
- [4 FCC Statement](#)
- [5 Read Manual Before Product use](#)
- [6 Documents / Resources](#)
- [7 Related Posts](#)

FMOUSE

FMOUSE M101 Wireless Mouse

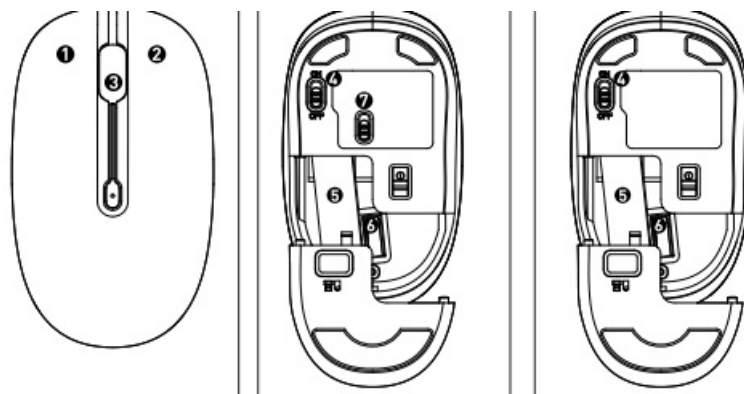


Thank you for choosing M101 wireless mouse! Please read the manual carefully before you start using our product

Specification

- 1600CPI, high resolution
- Effective transmission distance 10M
- 18months intelligent power saving

OVERVIEW



1. Left click
2. Right click
3. Non-slip wheel
4. ON/OFF Button
5. Battery
6. USB
USB Nano Receiver
7. Dual Mode switching
2.4G Mode

2.4G operation instructions(Single mode Version Plug the NANO receiver into your computer's USB port and you're ready to go

1. Update to iOS 13 system
2. After the system is updated, open Settings Accessibility Touch Assist Touch Open
3. Move the mouse to Bluetooth pairing mode, open the phone on tablet, search for pairing

FCC Statement

This equipment has been tested and found to comply with the limits for a Class B digital device.pursuant to part 15 of the FCC Rules. These limits are designed to provide reasonable protection against harmful interference in a residential installation. This equipment generates, uses and can radiate radio frequency energy and, iT not installed and used in accordance with the instructions, may cause harmful interference to radio communications. However, there is no guarantee that interference will not oCCur in a particular installation. If this equipment does cause harmful interference to radio or television reception, which can be determined by turning the equipment off and on, the user Is encouraged to try to correct the interference by one or more of the following measures:

- Reorient or relocate the recelving antenna.
- Increase the separation between the equipment and receiver.
- Connect the equipment into an outlet on a circuit diferent from that to which the receiver is connected.
- Consult the dealer or an experienced radio/TV technician for help.

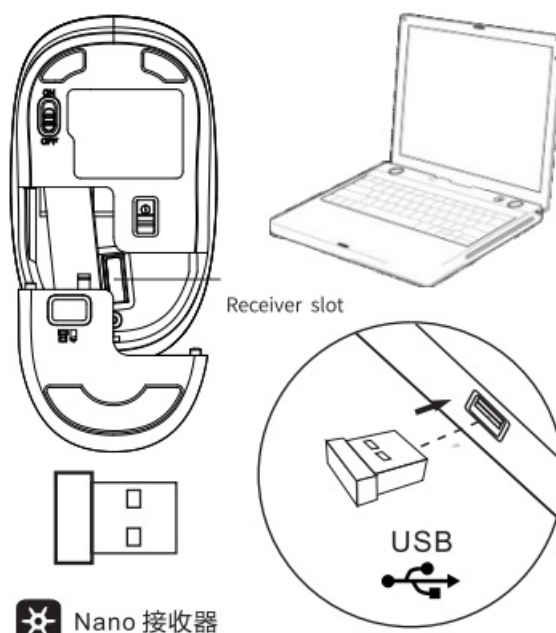
Caution: Any changes or modifications to this device not explicitly approved by manufacturer could void your authority to operate this equipment.

This device complies with part 15 of the FCC Rules. Operation is subject to the following two conditions:

1. This device may not cause harmful interference, and
2. this device must accept any interference received, including interference that may cause undesired operation.

RF Exposure Information

The device has been evaluated to meet general RF expos condition without restriction. requirement. The device can be used in portable exposure



1. Open the computer
 2. Plug the wireless "NANO Receiver" into the computer's USB port
 3. Push the "ON/OFF switch" on the bottom of the mouse to the ON" side.
 4. Move the mouse or tap the left and right buttons to use it normally.
- When the mouse moves slowly, check the battery, please replace the new one;
 - When the mouse is not connected, please check if the power Switch at the bottom of the mouse is turned on, or The NANO receiver is moved to other USB interfaces for use;
 - If you are not using the mouse for a long time, please turn off the power Switch manual to save power.
 - If the mouse is not used for a long time, it will automatically go to sleep, and you can move the mouse or Press any key to wake up
 - Bluetooth 5.1 version support: Win8/Win10/Mac/Android system,Support for ios 13 and above.

Read Manual Before Product use

Battery warning!

Battery warning! Improperly replaced batteries may present a risk of leak or explosion and personal injury. Mistreated rechargeable batteries may present a risk of fire or chemical burn Do not disassemble or expose to conducting materials, moisture liquid, or heat above 54 C(130°F). Do not use or charge the battery if it appears to be leaking king, discolored, deformed, or in any way abnormal. Do not leave your battery discharged or unused for extended periods Do not short circuit. Your device may contain an internal, rechargeable battery that is not replaceable Battery life varies with usage. Non-operational batteries should be discarded according to local laws. If no laws or regulations govern, dispose of your device in a waste bin for electronics. Keep batteries away from children. Class 1 laser product : this optical device complies with international standard IEC/EN 60825-1 : 2007, class 1 Laser Product, and also complies with 21 CFR 1040.10, except for deviations pursuant to laser Notice No 50, dated June 24, 2007:1) Emission of one or two independent parallel beams of infrared user-invisible light; 2) maximum power of 1.4 milliwatts CW, Emitted wavelength is 832-865 nm:3) Operating temperature between 5°C and 40°C

WARNING! Use of controls, adjustments or performance of procedures beyond those specified herein may result in hazardous radiation exposure

The product contains class 1 LED. Operating temperature between 0°C and 40°C

Class 1M Laser product: This optical device complies with international standard IEC/EN 60825-1: 2007, class 1M laser product, and also complies With 21 CFR 1040.10, except for deviations pursuant to laser Notice No. 50, dated June 24, 2007) emission of diverging beam of minimum +/-2 of infrared user-invisible light 2) maximum power of 1.4 milliwatts CW Emitted wavelength is 832.865 nm:3) operating temperature between 5°C and 40°C


WARNING Laser Radiation. Viewing the laser output with magnifying optical instruments within a 100mm distance may pose an eye hazard" INVISIBLE LASER RADIATION DO NOT VIEW DIRECTLY WITH OPTICAL INSTRUMENTS CLASS 1M LASER Pro Duct

WARNING ! The power supply is for indoor use only. Only use the power supply included with your product Do not attempt to repair or use a damaged power supply. Do not immerse the power supply in water or subject it to physical abuse. Inspect the power supply regularly for cable, plug, and casing damage

Use Guidelines : Safe & Proper Use Of Your Product

1. Do not open or modify the product except for battery removal and replacement.
2. Do not disassemble or attempt to service this product because there is a risk of radiation exposure, which could injure you.
3. Do not direct the infrared/laser beam at anyone's eye or a reflective object.
4. Do not immerse product in any liquid or expose to heat or moisture.
5. If product is exposed to out-of-range temperature environments power off the device until temperature has stabilized within the specified operating temperature range.
6. Use only provided power supply devices with this product. Do not modify the power supply.
Do not charge your product during an electrical storm
7. This is not a children's product and is not intended for use by children under 14 years old
8. If product is operating improperly, call support.
9. Product must be returned to the manufacturer for any service or repair
10. Long periods of repetitive motion using the product may be associated with nerve, tendon or muscle injury in your hands. Wrists, arms, shoulders, neck or back. See a qualified health professional for pain, numbness, weakness, swelling, burning, cramping or stiffness.
11. This product is safe under normal and reasonably foreseeable misuse operating conditions. If the product is operating improperly, contact fmouse support. Product must be returned to fmouse for any service or repair.
12. Any changes or modifications to the product that are not expressly approved by fmouse may void the user's authority to operate the equipment and your.

Documents / Resources

	FMOUSE M101 Wireless Mouse [pdf] User Manual M101, 2A4PY-M101, 2A4PYM101, M101 Wireless Mouse, Wireless Mouse, Mouse
---	---