



FLYCAM B-FLCM-FLN-01 Basic Flowline Camera Support Rig Installation Guide

[Home](#) » [FLYCAM](#) » FLYCAM B-FLCM-FLN-01 Basic Flowline Camera Support Rig Installation Guide 

Contents

- [1 FLYCAM B-FLCM-FLN-01 Basic Flowline Camera Support Rig](#)
- [2 Specifications](#)
- [3 Product Usage Instructions](#)
- [4 FAQ](#)
- [5 What's In The Box](#)
- [6 Flowline Rig Setup](#)
- [7 Warranty](#)
- [8 Liability](#)
- [9 Contact Us](#)
- [10 Documents / Resources](#)
 - [10.1 References](#)
- [11 Related Posts](#)



FLYCAM B-FLCM-FLN-01 Basic Flowline Camera Support Rig



Specifications

- **Product:** Flycam Basic Flowline Camera Support Rig
- **Material:** High-quality durable materials
- **Weight Capacity:** Up to [insert weight capacity]
- **Waist Size Compatibility:** Up to 26 inches

Product Usage Instructions

Assembly

1. Connect Section-1 of Support Jacket with Section-2 of Support Bar using the push-fit technique.
2. Remove side knobs of Section-2 and join Section-3 with Section-2, then tighten the knobs back.
3. Adjust and tighten the buckles at both waist and chest until comfortable.
4. Loosen the knob on the hook, attach the camera, and tighten the knob for a secure connection.
5. Slightly loosen all four knobs on the back of the Support Jacket to adjust the height of the Support Bar.
6. Use the side Support Bars to shift weight easily to shoulders and hips.

Adjustments

1. Use the Adjustment Knob to adjust tension according to the weight of your setup.
2. Loosen the knob at the Support Bar and adjust the camera position to eye-level if needed.

Adjusting Waist Size

1. Loosen the strap of the flowline jacket as needed.
2. Adjust and tighten the buckles at the waist until comfortable (fits up to 26 waist size).

FAQ

- **What is the maximum weight capacity of the Flycam Basic Flowline Camera Support Rig?**

The Flycam Basic Flowline Camera Support Rig can support weights up to [insert weight capacity].

- **Can I adjust the height of the Support Bar?**

Yes, you can adjust the height of the Support Bar by slightly loosening all four knobs provided on the back of the Support Jacket.

- **How do I adjust the tension in the Flowline Jacket?**

You can adjust the tension in anti-clockwise direction using the Adjustment Knob according to the weight of your setup.

- **What waist size does the Flowline Jacket fit?**

The Flowline Jacket fits up to a 26-inch waist size. Adjust and tighten the buckles at the waist until comfortable.

What's In The Box

Please inspect the contents of your shipped package to ensure you have received everything that is listed below.



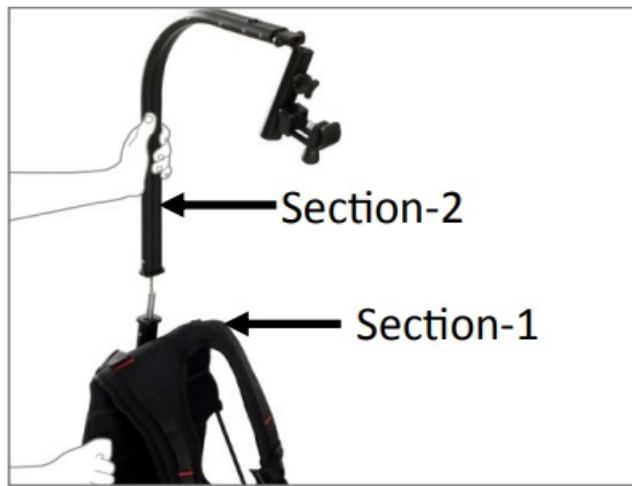
Flycam Basic Flowline Camera Support Rig



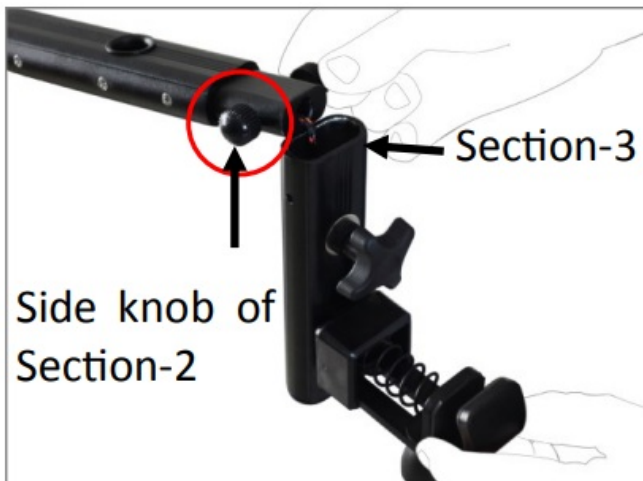
Bag Packing

Flowline Rig Setup

- Connect Section-1 of Support Jacket with Section-2 of Support Bar by simple push-fit technique.



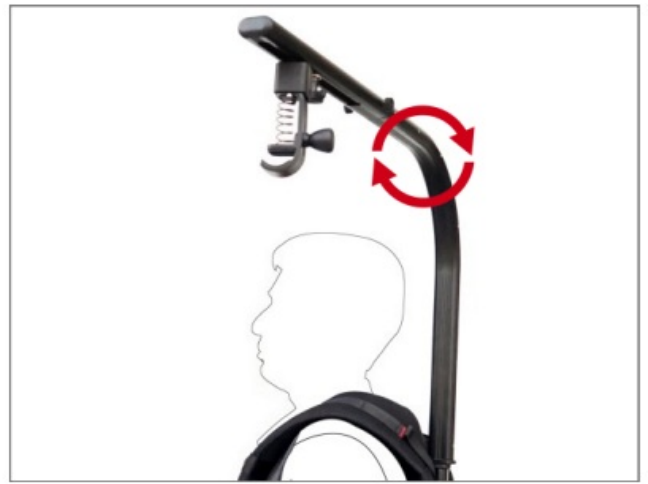
- Remove side knobs of Section-2. Join Section-3 with Section-2 and tighten the knobs back.



- Adjust & tighten the buckles provided at both waist & chest, as shown in image, until you find it comfortable.



- The Top Bar with 180° Rotation allows easy camera movements to capture different angles.



- Loosen the knob on hook and attach camera with it. Tighten the knob back to ensure slip-free connection.



- Slightly loosen all the four knobs provided on back of Support Jacket to adjust the height of Support Bar. By adjusting side Support Bars, weight can be easily shifted to your shoulders and hips.



- Through Adjustment Knob you can adjust the tension in anti-clockwise direction, according to the weight of your setup.



- Loosen knob at Support Bar and adjust the position of camera according to your eye-level, if required.



How to Adjust a Flowline Jacket to a 26" Waist

- Loosen the strap of the flowline jacket according to your body requirement.



- Adjust & tighten the buckles provided at waist, as shown in image, until you find it comfortable.

NOTE: Flowline Jacket fits up to 26" waist size.



- YOUR FLYCAM BASIC FLOWLINE WITH 180° ROTATION ALL DRESSED UP AND READY TO GO!



(SHOWN WITH OPTIONAL ACCESSORIES)

Warranty

We offer one year warranty for our products from date of purchase. Within this period of time, we will repair it without charge for labor or parts. Warranty doesn't cover transportation costs nor does it cover a product subjected to misuse or accidental damage. Warranty repairs are subjected to inspection and evaluation by us.

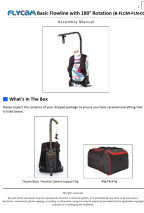
Liability

We are not liable for damage caused by products that we do not supply or from mishandling in transit, accident, misuse, neglect, lack of care of the product, or service by anyone other than our company.

Contact Us

In case of any kind of dissatisfaction, please Contact us immediately and we promise our utmost support and care until you use our product.

Documents / Resources

	<p>FLYCAM B-FLCM-FLN-01 Basic Flowline Camera Support Rig [pdf] Installation Guide B-FLCM-FLN-01 Basic Flowline Camera Support Rig, B-FLCM-FLN-01, Basic Flowline Camera Support Rig, Flowline Camera Support Rig, Camera Support Rig, Support Rig</p>
--	---

References

- [User Manual](#)

[Manuals+](#), [Privacy Policy](#)

This website is an independent publication and is neither affiliated with nor endorsed by any of the trademark owners. The "Bluetooth®" word mark and logos are registered trademarks owned by Bluetooth SIG, Inc. The "Wi-Fi®" word mark and logos are registered trademarks owned by the Wi-Fi Alliance. Any use of these marks on this website does not imply any affiliation with or endorsement.