



FLUVAL A203 UVC In-line Clarifier Instruction Manual

[Home](#) » [FLUVAL](#) » FLUVAL A203 UVC In-line Clarifier Instruction Manual 



UVC IN-LINE CLARIFIER
CLARIFICATEUR UVC POUR FILTRE CLARIFICADOR EN SERIE UVC

INSTRUCTION MANUAL



Contents

- 1 WHAT'S INCLUDED
- 2 IMPORTANT SAFETY INSTRUCTIONS
- 3 UVC unit installation.
- 4 TIMER INSTALLATION & OPERATION
- 5 FOR AUTHORIZED WARRANTY REPAIR SERVICE
- 6 RECYCLING
- 7 2 YEAR STANDARD WARRANTY
- 8 Documents / Resources
 - 8.1 References
- 9 Related Posts

WHAT'S INCLUDED



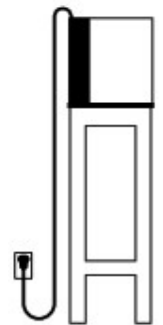
- | | |
|---|------------------------------|
| 1. 18.5" / 47 cm Non-Kink Ribbed Hosing | 4. 100-240V/24V Power Supply |
| 2. 3W UVC In-Line Clarifier Unit | 5. Two (2) Mounting Screws |
| 3. Two (2) Lock Nuts | 6. 24-Hour Timer |

IMPORTANT SAFETY INSTRUCTIONS

WARNING— To guard against injury, basic safety precautions should be observed, including the following:

1. **READ AND FOLLOW ALL SAFETY INSTRUCTIONS WARNING** – And all the important notices on the use and maintenance of this appliance. Disregarding this advice may result in damage to the appliance or personal injury.
2. **DANGER** - To avoid possible electric shock, special care should be taken since water is employed in the use of aquarium equipment. For each of the following situations, do not attempt repairs yourself; return the appliance to the store where it was purchased if still under warranty. If the appliance shows any sign of abnormal water leakage, immediately unplug it from the power source.
 - A. This is a NOT a submersible product. Do not immerse the product in water! If the appliance falls into the water, DON'T reach for it. First unplug it and then retrieve it.**

- B. If the appliance shows any sign of abnormal water leakage or if RCD (or GFCI- Ground Fault Current Interrupter) switches off, disconnect the power supply cord from mains (main power supply).
- C. Carefully examine the appliance after installation. It should not be plugged if there is water on parts not intended to be wet. If electrical components of the appliance get wet, unplug the appliance immediately.
3. **CAUTION NEVER LOOK INTO A UV LAMP WHEN SWITCHED ON.** Direct exposure to ultraviolet light can damage eyes and skin.
4. **WARNING** Close supervision is necessary when any appliance is used by or near children. This appliance can be used by children ages 8 years and above and persons with reduced physical, sensory or mental capabilities or lack of experience and knowledge if they have been given supervision or instruction concerning use of the appliance in a safe way and understand the hazards involved. Children shall not play with the appliance. Cleaning and user maintenance shall not be made by children without supervision. To avoid injury, do not touch moving parts or hot parts.
5. **CAUTION** -Always unplug or disconnect all appliances in the aquarium from the electrical supply before placing hands in water, before putting on or taking off parts and while the equipment is being installed, maintained or handled. Never yank the cord to pull the plug from outlet. Grasp the plug and pull to disconnect. Always unplug an appliance from an outlet when not in use.
6. This appliance cannot be repaired. Do NOT try and disassemble this unit, it is sealed and NOT serviceable. Whole unit must be replaced.
7. This appliance comes with a 3 watt bulb that cannot be replaced.
8. This appliance requires no cleaning and is maintenance free. Do NOT attempt to clean unit using water or other substance.
9. This appliance should only be used with the power supply unit provided.
10. The supply cord cannot be replaced. If the cord is damaged the appliance should be disposed of in the proper manner.
11. Do not operate any appliance if it has a damaged cord or plug, or if it is malfunctioning or it is dropped or damaged in any manner. The power cord of this appliance cannot be replaced. If the cord is damaged, the appliance should be discarded. Never cut the cord.
12. To avoid the possibility of the appliance plug getting wet, position the tank to the side of a wall mounted receptacle to prevent water from dripping onto the receptacle. A “drip loop”, should be arranged by the user for each cord connecting an aquarium device to the receptacle. The “drip loop” is the part of the cord below the level of the receptacle or the connector if an extension cord is in use, to prevent the water from travelling along the cord and coming into contact with the receptacle. If plug or receptacle gets wet, DO NOT unplug the cord. Disconnect the fuse or circuit breaker that supplies power to the receptacle then unplug the transformer and examine for the presence of water in the receptacle.
13. This appliance contains a UVC emitter. Unintended use of the appliance or damage to the housing area may result in radiation. Exposure, even in small doses, may cause harm to eyes and skin. Damaged units should not be in operation.
14. **WARNING** - Disconnect all appliances when performing maintenance.
15. The appliance is to be supplied through a residual current device (RCD) having a rated residual operating current not exceeding 30 mA.
16. Do not use the appliance for any purpose other than that for which it is intended. The use of attachments not recommended or sold by the appliance manufacturer may cause an unsafe condition.
- Do not use this product in swimming pools or other situations where people are immersed.



- This product is suitable for use with water temperatures up to 35 °C.
- Do not use this product with inflammable or drinkable liquids.
- To avoid overheating, always ensure the filter is pumping water through the unit while the UVC is plugged in.
- This product should not be placed where it can fall into the water. It should be placed in a dry and protected place, with sufficient ventilation around it.

17. If an extension cord is necessary, ensure connection is watertight and dust proof. A cord with proper rating should be used.

A cord rated for less amperes or watts than the appliance rating may overheat. Care should be taken to arrange the cord so that it will not be tripped over or pulled. The connection should be carried out by a qualified electrical installer.

WARNING - Do not connect power to unit unless unit is fully and correctly assembled. The unit must always be fully filled with water when operating.

18. Do not cut hose.

19. **SAVE THESE INSTRUCTIONS**

PREPARING YOUR FILTER (EXISTING SETUP)

1. Ensure your canister filter is unplugged.
2. Ensure your canister and its hoses are empty of water and the hoses are removed from the aquarium before beginning

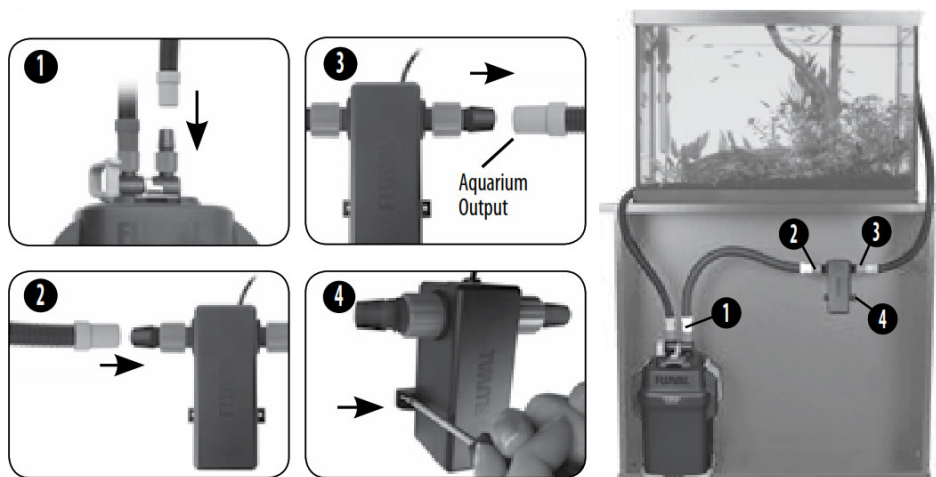
UVC unit installation.

UVC INSTALLATION The UVC unit is compatible with Fluval 06 and 07 series canister filters, in addition to those with output hose inner diameter of 5/8" (16 mm) and an outer hose diameter of 1/8"(19 mm).

1. Insert ribbed hosing supplied with your UVC unit into the output nozzle of your canister filter and tighten nut.
2. Connect other end of UVC supplied hosing into one side of UVC unit and tighten nut.

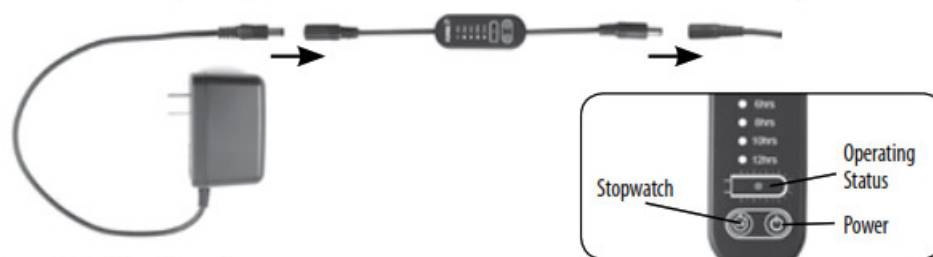
NOTE: The UVC unit is multidirectional and will operate in either direction.

3. Connect filter output hosing to the opposite (unused) UVC nozzle and tighten nut.
4. To ensure maximum flow, DO NOT install UVC unit above the aquarium water line. To make sure the output hose reaches the aquarium with no kinks or loops, trial mount the UVC unit and hose before making any final cuts or holes. NOTE: The UVC unit is supplied with (2) mounting screws for easy installation.
5. Attach filter output and intake assembly to aquarium (Refer to filter manual for proper installation).
6. Prime your canister filter.
7. Plug in your canister filter to electrical outlet and ensure that water is flowing in and out of the canister filter.
8. Plug in the UVC unit to electrical outlet.



TIMER INSTALLATION & OPERATION

To install, connect timer power supply to timer, and then the timer to the base of UVC unit as shown in the image.



To run UVC unit continuously:

Press the timer Power button. The Operating Status light should illuminate in Green to indicate normal functionality.

To run the UVC unit intermittently:

After turning the timer power on, continue pressing the Stopwatch button to cycle through the various operating time periods: 4, 6, 8, 10 and 12 hours. A Blue light will appear next to the operating time currently engaged.

Operating Status Light:

This indicates the life cycle of the UVC bulb/unit. A Green light represents proper UVC bulb functionality. A Red light designates the bulb has expired, requiring complete UVC unit replacement.

Power Interruption:

If the timer is unplugged or endures a power failure, the UVC unit will revert to the same operating time that was initially selected once it is reconnected to a power source. For example, if the timer was set to operate for 4 hours within a 24-hour period, it will continue to operate for 4 hours from the moment power is re-established. As the timer does not keep track of the time of day, if you want the UVC unit to continue running for 4 hours as of 8 am, for example, the unit should be connected to a power source at 8 am. To switch from a specific timer period to continuous 24-hour operation, press the Power button off and then on again. This will re-establish the UVC unit to run full time.

FOR AUTHORIZED WARRANTY REPAIR SERVICE

For Authorized Warranty Service please return (well packaged and by registered post) to the address below enclosing dated receipt and reason for return.

If you have any queries or comments about the operation of this product, please let us try to help you before you return the product to your retailer. Most queries can be handled promptly with a phone call. When you call (or write), please have all relevant information such as model number, age of product, details of aquarium set-up, as well as the nature of the problem.

CANADA: Rolf C. Hagen Inc., 20500 Trans Canada Hwy, Baie-D'Urfé, QC, H9X 0A2

U.S.A.: Rolf C. Hagen (U.S.A.) Corp., 305 Forbes Blvd, Mansfield, MA 02048

UK: Rolf C. Hagen (UK) Ltd, Customer Service Department California Drive, Whitwood Ind Est., Castleford West Yorkshire WF10 5QH

CALL US ON OUR TOLL-FREE NUMBER:

Canada only: 1-800-554-2436 between 9:00 a.m. and 4:30 p.m. Eastern Standard Time. Ask for Customer Service.

U.S. only: 1-800-724-2436 between 9:00 a.m. and 4:00 p.m. Eastern Standard Time. Ask for Customer Service.

U.K. only: Helpline Number 01977 521015. Between 9:00 AM and 5:00 PM, Monday to Thursday and 4:00 PM on Friday (excluding Bank Holidays).

RECYCLING



This product bears the selective sorting symbol for waste electrical and electronic equipment (WEEE). This means that this product must be handled pursuant to European Directive 2012/19/EU in order to be recycled or dismantled to minimize its impact on the environment. For further information, please contact your local or regional Authorities.


Electronic products not included in the selective sorting process are potentially dangerous for the environment and human health due to the presence of hazardous substances.

2 YEAR STANDARD WARRANTY

The Fluval UVC in-line Clarifier is guaranteed for defective parts and workmanship for a period of 2 years from the date of purchase. This guarantee is valid with proof of purchase only. The guarantee is limited to repair or replacement only and does not cover consequential loss, loss or damage to livestock and personal property or damage to animate or inanimate objects, irrespective of the cause thereof. This guarantee is valid only under normal operating conditions for which the unit is intended. It excludes any damage caused by unreasonable use, negligence, improper installation, tampering, abuse or commercial use. The warranty does not cover wear and tear, breakage of glass or parts which have not been adequately or correctly maintained.

THIS DOES NOT AFFECT YOUR STATUTORY RIGHTS.

Documents / Resources

	<p>FLUVAL A203 UVC In-line Clarifier [pdf] Instruction Manual A203, UVC In-line Clarifier</p>
---	---

References

- [Rolf C. Hagen Inc.](#)