



FlukeView 2 Software for ScopeMeter Test Tool User Manual

[Home](#) » [FLUKE](#) » FlukeView 2 Software for ScopeMeter Test Tool User Manual 

Contents

[1 FlukeView 2 Software for ScopeMeter Test Tool](#)

[Introduction](#)

[2 Installation](#)

[3 Overview](#)

[4 Main Window](#)

[5 Filter](#)

[6 Basic Operation](#)

[7 Overview](#)

[8 Documents / Resources](#)

[8.1 References](#)

[9 Related Posts](#)

FlukeView

FlukeView 2 Software for ScopeMeter Test Tool



Introduction

FlukeView™ 2 software works with your ScopeMeter® Test Tool or Motor Drive Analyzer Test Tool. With FlukeView 2 you can:

- **Document:** Transfer screens, waveforms, and measurement data from the Test Tool to your PC to print, or to import data into other programs.
- **Archive:** Store and retrieve screens or waveforms with text annotations and create your own library for easy reference and comparison.
- **Analyze:** Gather valuable measurement data and enable cursor measurement to reveal relationship and conditions.

The setup program installs the FlukeView 2 software on PCs that operate on Windows 10, or later.

Installation

The software is available to download from the Fluke website: www.fluke.com/support/software-downloads.

To install the software

1. Run the installation program from the download. The setup program starts up.
2. Follow the on-screen instructions to complete the installation.

Software Activation

Your purchase of the Test Tool includes FlukeView 2 software that is a demo version with limited capabilities. When the demo version of FlukeView 2 opens, the Activation dialog opens and prompts for an activation key. To activate the software for the full version:

1. Type your 15-digit activation key in the Activation dialog box. Fluke provides the activation key with the purchase of software.
2. Select Activate for the full functionality of FlukeView 2. If you do not have a key, select DEMO to continue to use the demo version with limited functionality.

MDA/190 II/190 III Test Tool Connections

FlukeView 2 software communicates with the Test Tool through WiFi (Series III) or the optional USB cable. See Figure 1. Also see the Test Tool Users Manual for more information.

To use with WiFi:

1. Insert the WiFi adapter. The tool automatically detects the adapter and turns on WiFi.
2. To check the WiFi settings push F on your Test Tool. Push 1 to turn on or turn off the WiFi.
3. On the PC, use the SSID of the Test Tool to establish a WiFi connection to the P
 1. **Note** If the PC is connected by WiFi to a wireless access point that provides Internet access, this connection is lost when you connect to the Test Tool.
4. Select Connect. To use with USB cable:
 1. When you use the USB (A to mini B) cable for the first time, the driver for the cable automatically installs on the PC.
 2. Select Connect.



Figure 1. Test Tool to PC Connections

120B ScopeMeter Test Tool Connections

FlukeView 2 software communicates with the Test Tool through WiFi or the optional optically-isolated USB cable, OC4USB. See Figure 2. Also see the 123B/124B/125B ScopeMeter Test Tool Users Manual for more information.

1. To use with WiFi

1. Turn on WiFi in the Test Tool

Note Fluke 120B Series: Push to turn on the WiFi.shows in the Information area.
2. On the PC, use the SSID of the Test Tool to establish a WiFi connection to the PC.

Note If the PC is connected by WiFi to a wireless access point providing Internet access, this connection

is lost when you connect to the Test Tool.

3. Select Connect.

2. To use with USB:

1. Connect the PC with the optional OC4USB cable. When using this cable for the first time, the FTDI driver for the cable automatically installs. The driver installation requires an Internet connection. This driver is the Virtual Com Port driver available on www.ftdichip.com.

2. Select Connect.

Software Connection

At startup, FlukeView 2 automatically tries to make a connection with the Test Tool. An icon for the instrument shows at the top of the window if the connection is successful and the Test Tool is connected. See Figure 3, item A.

If you do not see the icon, this automatic connection is not successful. Click Connect to make the connection with the Test Tool.

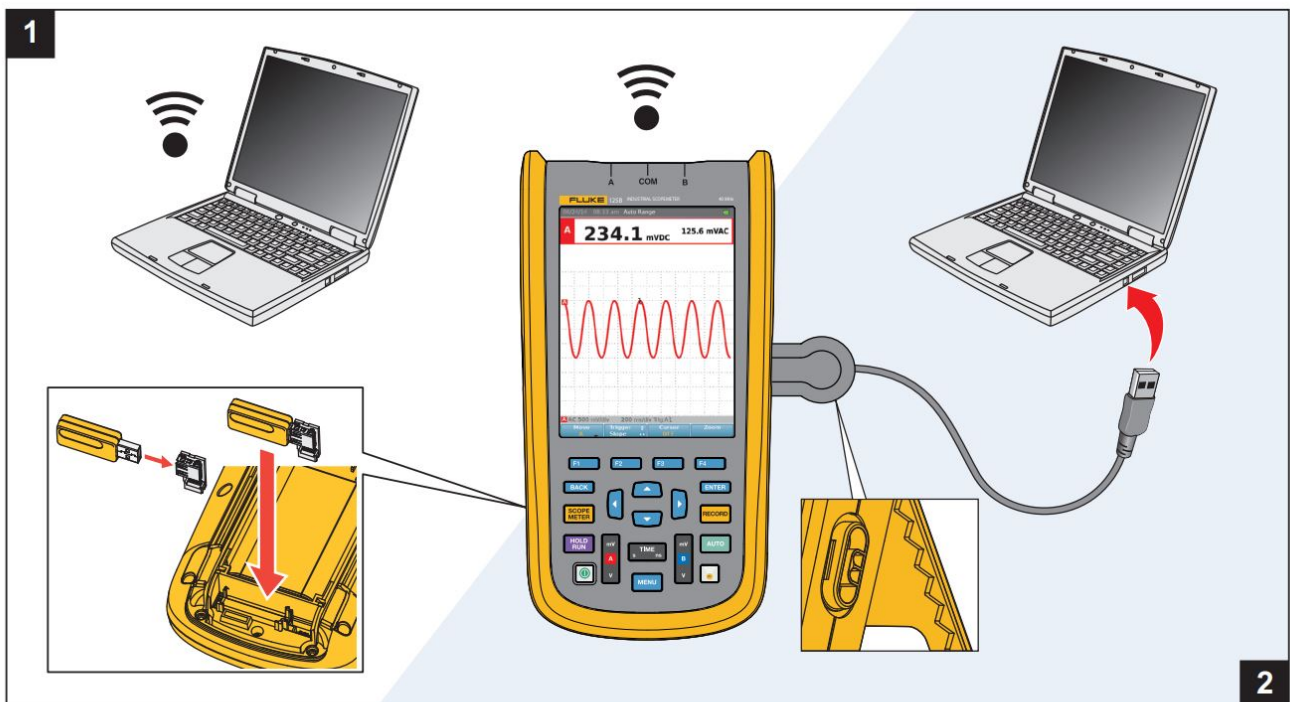


Figure 2. 120B ScopeMeter Test Tool to PC Communication

Overview

FlukeView2 software enables you to read data from the Test Tool. Data is transferred from the Test Tool as a Measurement Group that consists of one or more of these components:

- **Screen**

This is bitmap data from the Test Tool screen in pixel-format that you can print or copy to another program. You can include the picture in documents and reports.

- **Waveform**

This is sampled data with time information on the x-axis and amplitude values on the y-axis. You can analyze this data in more detail on the PC and copy it to another program as tabular text (.csv file format) information.

- **Setup**

This is binary data that represents all of the settings of the Test Tool. You can send the Setup data back to the Test Tool to put it in the same state as when the setup was saved.

Main Window

The main window is an overview of all the Measurement Groups since the start of the program and all items that have been stored to the database. See Figure 3.

Each Measurement Group can have a screen, waveforms, and a setup. Icons shown below the Measurement Group indicate what is included. The icon is gray, if the data component is not included.

The most recent Measurement Group shows on the top left portion of the window. See Figure 3, item

Tips:

- Double-click on the Measurement Group or click Analyze > Overview.
- To select multiple groups, hold the Shift key or Ctrl key and click.

Note

For touch screens, use the touch conventions that correspond with mouse functions.

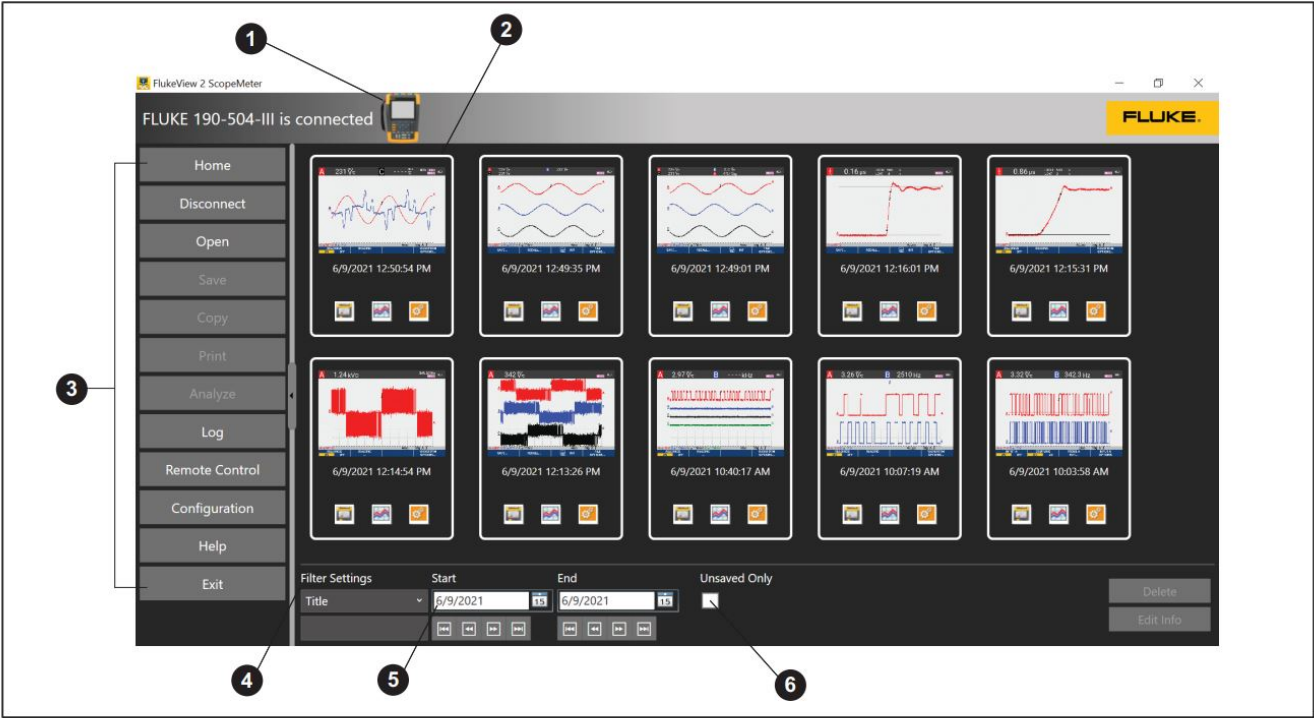


Figure 3. FlukeView 2 Main Window

Menu

Use the menu buttons on the left toolbar to access the software functions. See Figure 3, item . Table 1 is a list of the menu items and functions.

Menu	Sub-menu	Description
Home	— — —	Go to the main window.
Connect/ Disconnect	— — —	Connect/Disconnect the PC with the Test Tool. The label changes to show the current status.
Open	From Instrument	Transfer the screen, waveform, and setup information from the Test Tool to the PC. For the Motor Drive Analyzer, a report that consists of a number of screens can be transferred immediately.
	From File	Open a stored screen, waveform, and setup information from selected file.
Save	To Instrument	Transfer the setup data to the Test Tool.
	To Database	Save the selected Measurement Groups to the database. When this data is stored to the database, the information is retrieved easily with the Filter settings on the bottom of the main window.
	To File	Save the selected Measurement Groups to a FlukeView 2 file, export a screen to a .bmp file, or export waveform data to a .csv file.
Copy	Screen	Copy screen information as a bitmap to the clipboard.
	Waveform	Copy waveform data as tabular text data to the clipboard.

Table 1. FlukeView2 Menu Functions (cont.)

Menu	Sub-menu	Description
Print	Screen	Print the screens of selected Measurement Group. The Additional Info and Description print as well.
	Waveform	Print the waveforms of the selected Measurement Group. Additional Info and Description prints as well.
	Report	Print the selected screens. The Additional Info prints as the header. Description prints for each screen.
Analyze	Overview	Shows selected Measurement Groups in more detail and allows you to add Additional Info and Description. Double-click on the waveform to select Analyze Waveform. Double-click on the screen to see a larger screen display.
	Waveform	Shows selected waveforms of the Measurement Groups and allows you to zoom the data and show the cursors on the waveform.
Log	Readings	Log the meter readings over time. The logged readings are stored in the same way as the waveform data.
Configuration	---	<p>Change the language or color scheme. To activate the change:</p> <ol style="list-style-type: none"> 1. Select Save. 2. Restart the application. <p>Includes the option to clean up the internal database and compress the file size for faster operation.</p>
Help	About	Shows the version information for the software.
	Manual	Opens a PDF of the users manual.
Exit	---	Close the FlukeView 2 software.

Filter

- On the bottom of the screen you can select a filter to limit the amount of Measurement Groups that are visible in the main window. See Figure 3, item
- Use Start and End to select the date range of the items that show in the main window. See Figure 3, item
- Check the Unsaved Only option to show only the items that are not yet saved to the database. See Figure 3, item
- The drop-down list on the left of the Filter settings allows you to filter on Measurement groups with “Additional Info.” See Figure 3, item

As an example:

- Select Company Name from the drop-down list.
- In the field below the text, enter Enterprise. This shows the Measurement groups with the text, Enterprise, in the Additional Info field.

To edit the Additional Info field:

1. Click on the Edit Info button at the bottom of the screen.
2. Or, go to Analyze Overview and select Additional Info.

Basic Operation

The screen, waveform data, and setup show as a Measurement Group in a small window on the main window. To transfer the data as a Measurement Group from the Test Tool to the PC:

1. Select Open > From Instrument.
2. Select Active.

To transfer Measurement Groups that are stored in the internal memory of the Test Tool:

Note

Not supported with WiFi communication.

1. Select Open > From Instrument.
2. Select Saved.

To view a Measurement group in more detail:

Double click the Measurement Group or select Analyze

Overview

You can add a description about the measurement for later reference and printing:

1. Click on the small arrows next to Additional Information.
2. Type in a description to add information to the measurement.

Screens

To copy the screen as a bitmap to the clipboard, for example, to paste into a report:

1. Select a Measurement Group.
2. Select Copy > Screen.

You can now paste from the clipboard into another application.

To print screens from the selected Measurement Groups, select Print > Screen. The selected screens print and include Additional Information and Description.

To see a screen in more detail:

1. Double-click a Measurement Group in the main window.
2. Double-click the screen to open a larger view of the screen.

Waveforms

To copy the waveform data as tabular text information to the clipboard, for example, to paste into a spreadsheet:

1. Select a Measurement Group.
2. Select Copy > Waveform.

To see the waveform data in more detail:

1. Double-click the Measurement Group.
2. Double-click the waveform to see a larger view of the waveform. Or, select Analyze Waveform.
3. Click and drag the axis that corresponds to a waveform to move the waveform up and down.

To view cursor readings and waveform information:

1. Select the Cursor button in the Analyze Waveform window. The Datablock on the right side shows waveform information and the Cursor values section shows the information about the cursor readings.
Click and drag to move the cursor.
When two waveforms show on the display, click the waveform to select the waveform for the cursor readings.

To zoom in on the waveform:

1. Select Zoom.
2. Click and drag with the mouse inside the graph or use the controls on the horizontal scrollbar.
3. Click Zoom again to exit the zoom function.

To compare waveforms from two Measurement Groups:

1. In the main window, select two Measurement Groups.
2. Select Analyze > Waveform.
3. Select both Measurement Groups in the bottom of the window.

The waveforms of both Measurement Groups are shown.

How to Work with Setups

A Setup is binary data that represents all of the settings of the Test Tool. This data is not visible. To configure the Test Tool in the same state as when the Measurement Group was transferred, select Save > To Instrument > Setup.

How to Work with Reports

For MDA models, you can create a Report on the Test Tool. You can also save a collection of screens as a Report. The name of the report needs to be entered once. For all successive Save To Report selections, a bitmap of the screen is added until the report is closed.

To open a report from the MDA model:

1. Select Open > From Instrument > Report.
2. Select the name of the Report in the dialog box with the drop-down menu.
3. Click Start.

All report screens show on the Home screen and are selectable. No waveform data or setup data is transferred. Each measurement group consists of a screen only.

The title of all the screens is the report name as entered on the Motor Drive Analyzer. The Description text shows the measurement function.

You can save the report to a USB drive on the Motor Drive Analyzer. This report is saved on the drive as a directory with multiple .PNG files. The directory contains a .FVS file to use as a method to select the report.

To open a report from a USB drive or other disk from the PC:

1. Select Open > From File.
2. Select the report directory and then the .FVS file in that directory.

All screens are selected after transfer from the Test Tool or opening from the drive.

1. You can choose to print:

Select Print > Report.

2. Save to file:

Select Save > To File.

3. Save to database for later use in the FlukeView 2: Select Save > To Database.

How to Work with 120B Recording

Use the WiFi on the 120B Test Tool to transfer a Meter or Scope recording or store them on a micro SD card and then open the recording in FlukeView 2.

To transfer a recording with WiFi:

1. Select Open > From Instrument > Recording.
2. Select the name of the recording in the dialog box with the drop-down menu.
3. Click Start.

The recording can also be saved to a micro SD card on the Fluke 124B or 125B. The recording is saved on the drive as a directory with multiple binary files. The directory also contains a .FVR file that can be used a method to select the Recording.

To open a recording from a micro SD card or disk of the PC:

1. Select Open > From File.
2. Select the report directory and then the .FVR file in that directory.


Save Data to File

To save Selected Measurement Groups to a file:

1. Select Save > To File.
2. Enter a name for the file in the File Name box.
3. Select .CSV to save only the waveform data to the file. Or, select .BMP to save only the screen data to the file.

To save Measurement Groups to a database for easy access, select Save > To Database. The Measurement Group is saved to a database of measurements. With the database, you can easily retrieve information. Use the Filter settings to limit how many Measurement Groups show in the main window.

Documents / Resources

	FLUKE FlukeView 2 Software for ScopeMeter Test Tool [pdf] User Manual FlukeView 2, Software for ScopeMeter Test Tool
---	--

References

-  [Fluke Corporation: Fluke Electronics, Calibration and Networks](#)
-  [Download software updates | Fluke](#)
-  [Home - FTDI](#)
-  [Download software updates | Fluke](#)