



BOSCH
KIN96NSE0G
Built In Fridge
Freezer With
Freezer



Fluidmaster PRO540A-011 Adjustable Flush Valve Installation Guide

[Home](#) » [FLUIDMASTER](#) » Fluidmaster PRO540A-011 Adjustable Flush Valve Installation Guide 

Contents

- [1 Fluidmaster PRO540A-011 Adjustable Flush Valve](#)
- [2 PARTS OVERVIEW](#)
- [3 STEP 1: INSTALL FLUSH VALVE](#)
- [4 STEP 2: SECURE TANK TO BOWL*](#)
- [5 STEP 3: FINISHING STEPS](#)
- [6 STEP 4: FINE-TUNE FLUSH](#)
- [7 TROUBLESHOOTING](#)
- [8 LIMITED FIVE-YEAR EXPRESS WARRANTY](#)
- [9 FAQ](#)
- [10 Documents / Resources](#)
 - [10.1 References](#)
- [11 Related Posts](#)



Fluidmaster PRO540A-011 Adjustable Flush Valve



GETTING STARTED

PARTS OVERVIEW



STEP 1: INSTALL FLUSH VALVE

- REMOVE FLUSH VALVE PIECES FOR INSTALLATION.
Remove locknut (a) and keep for installation.

NOTE: Remove tank from bowl

- INSERT FLUSH VALVE INTO TANK HOLE.

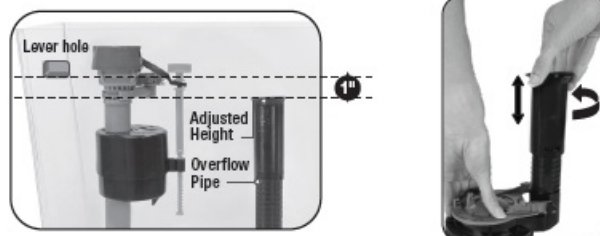
(After removing the tank from bowl) Position overflow pipe toward back of tank.

NOTE: Do not cover tank bolt holes with flush valve. If flush valve covers a bolt hole, turn flush valve slightly to the right (overflow tube to the right) to clear the bolt hole. In some cases, placing bolts in the holes first may be necessary.



- C: MEASURE AND ADJUST NEW FLUSH VALVE.

- Mark the flush valve height 1" below bottom of tank lever hole.
- Twist to unlock. pull or push to correct height, twist to lock in place.
- NOTE: The top of the overflow pipe must be at minimum of 1" below the tank lever hole.



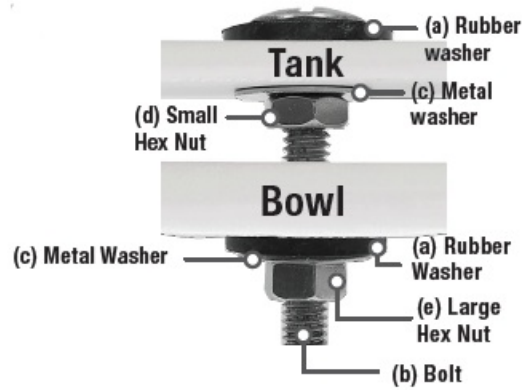
- D: INSTALL LOCKNUT AND TANK TO BOWL GASKET.

- Screw locknut (a) onto bottom of flush valve. Tighten 1/2 turn beyond hand tight. (Do not over-tighten).
- Apply tank-to-bowl gasket (b) to bottom of flush valve locknut, fully covering locknut.



STEP 2: SECURE TANK TO BOWL*

- INSERT BOLTS INTO TANK. Place one rubber washer (a) on each tank bolt (b) and place tank bolts through bottom holes of the tank. Add metal washer (c) and small hex nut (d) to tank bolt and tighten using pliers. Do not overtighten.



- SECURE TANK ONTO BOWL. Add a rubber washer (a), followed by a metal washer (c), and large hex nut (e) to each bolt (b). Hand-tighten hex nuts onto each one of the bolts evenly, then use pliers to tighten hex nuts until tank is snug and it does not rock. (Do not overtighten.)

*Tank-to-bowl hardware not included.



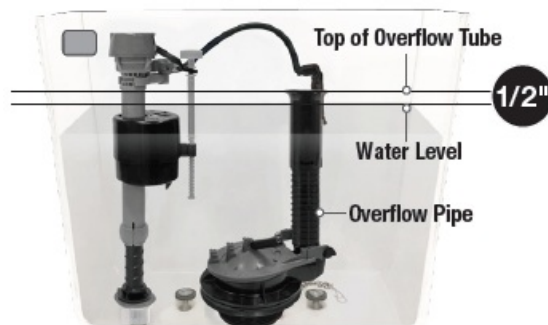
STEP 3: FINISHING STEPS

- A: ATTACH REFILL CLIP TO OVERFLOW PIPE.
- CONNECT FLAPPER CHAIN. Attach clip to the tank lever directly above the flapper. Leave roughly $\frac{1}{2}$ " of slack (small 'J' shape) in the chain.
- ATTACH WATER SUPPLY CONNECTOR TO FILL VALVE. Twist connector to tighten. *Hand-tighten only. Do not overtighten.
- TURN ON WATER.
Check for leaks.



- **WATER LEVEL**

After the tank stops filling, water level should fill the tank to roughly $\frac{1}{2}$ " below top of overflow pipe to ensure a proper flush.



Overtightening may damage fill valve, potentially causing flooding. Make sure the float cup does not touch the tank walls or tank lever and flush valve.

The top of the overflow pipe must be a minimum of 1" below tank lever hole.

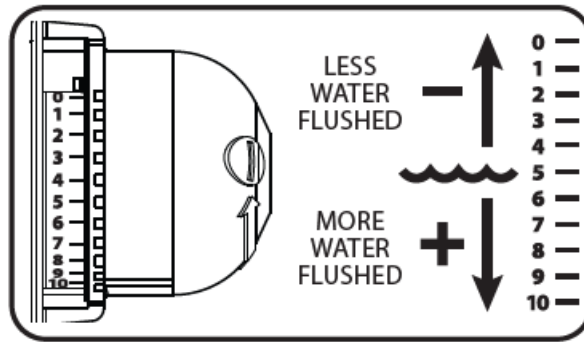
STEP 4: FINE-TUNE FLUSH

- **ADJUST FOR MOST EFFICIENT FLUSH.**

Continue to adjust dial down one setting and flush until toilet is unable to flush paper properly. Once unable to flush, adjust dial up one for final setting.

NOTE: Flapper dial is pre-set to maximum setting (10).

Hint: The higher the number, the longer the flapper stays open for more water flushed.



TROUBLESHOOTING

- A: FLAPPER MAY BE CLOSING TOO SOON.

Give flapper chain approximately 1/2" of slack (small "j" shape).



- LEAKING AT BOLTS AND/OR ON BASE OF TOILET.
Tighten bolts further until tank does not rock and leak stops.
- LEAK OCCURS WHEN TOILET IS FLUSHED.
Tank to bowl gasket needs to fully cover locknut and be seated properly.
- TOILET IS RUNNING WHEN NO FLUSH HAS TAKEN PLACE
Check flapper seal and/or ensure flush valve locknut is tightened 1/2turn past hand tight.

WARNING

DO NOT USE IN-TANK DROP-IN TOILET BOWL CLEANERS CONTAINING BLEACH OR CHLORINE. Use of such products will: (1) RESULT IN DAMAGE to tank components and MAY CAUSE FLOODING and PROPERTY DAMAGE and (2) VOID FLUIDMASTER WARRANTY. Fluidmaster Flush 'n Sparkle Toilet Bowl Cleaning System is recommended for those choosing to use in-tank bowl cleaners and WILL NOT VOID the FLUIDMASTER WARRANTY because it will not damage the components. DO NOT overtighten nuts or tank/bowl may crack. Always use quality Fluidmaster parts when installing or repairing. Fluidmaster will not be responsible or liable for use of non-Fluidmaster parts during installation or repair.

LIMITED FIVE-YEAR EXPRESS WARRANTY

Subject to the "Exclusions" set forth below, Fluidmaster Inc. promises to the consumer to repair, or at the option of Fluidmaster Inc. to replace any part of this plumbing product which proves to be defective in workmanship or

materials under normal use for five years from the date of purchase. All costs of removal, transportation and reinstallation to obtain warranty service shall be paid by the consumer. During this "Limited Five Year Express Warranty," Fluidmaster Inc. will provide, subject to the "Exclusions" section set forth below, all replacement parts free of charge, necessary to correct such defects. This "Limited Five Year Warranty" is null and void if this plumbing product has not been installed and maintained in accordance with all written instructions accompanying the product, and if non-Fluidmaster Inc. parts are used in installation. EXCLUSIONS: FLUIDMASTER INC. SHALL NOT BE LIABLE FOR INCIDENTAL OR CONSEQUENTIAL DAMAGES, INCLUDING COSTS OF INSTALLATION, WATER DAMAGE, PERSONAL INJURY OR FOR ANY DAMAGES RESULTING FROM ABUSE OR MISUSE OF THE PRODUCT, FROM OVERTIGHTENING OR FROM FAILURE TO INSTALL OR MAINTAIN THIS PLUMBING PRODUCT IN ACCORDANCE WITH THE WRITTEN INSTRUCTIONS, INCLUDING USE OF NON-FLUIDMASTER PARTS. DO NOT USE IN-TANK DROP-IN TOILET BOWL CLEANERS CONTAINING BLEACH OR CHLORINE. USE OF SUCH PRODUCTS WILL RESULT IN DAMAGE TO TANK COMPONENTS AND MAY CAUSE FLOODING AND PROPERTY DAMAGE. USE OF SUCH PRODUCTS WILL VOID THIS WARRANTY.

ADDITIONAL QUESTIONS?

For installation assistance, contact our technical services department.

EMAIL, CHAT or CALL our toll-free number.

www.fluidmaster.com/support

1-800-631-2011

Hours Available: Monday – Friday

5:30 AM – 5:00 PM PST

30800 Rancho Viejo Road, San Juan Capistrano, CA 92675 www.Fluidmaster.com 800-631-2011

Contact Fluidmaster for troubleshooting help or visit www.Fluidmaster.com

M-F 5:30 am – 5:00 pm PST.

Install with Confidence | www.FluidmasterPRO.com

FAQ

Troubleshooting

1. **Flapper Closing Too Soon:** Adjust the flapper chain to provide more slack. Avoid overtightening to prevent damage to the fill valve.
2. **Fine-Tuning Flush:** Adjust the dial on the flapper for the most efficient flush. Higher numbers result in more water flushed, while lower numbers conserve water.

Documents / Resources



[Fluidmaster PRO540A-011 Adjustable Flush Valve \[pdf\]](#) Installation Guide
PRO540A-011, PRO540A-011 Adjustable Flush Valve, PRO540A-011, Adjustable Flush Valve, Flush Valve, Valve

References

- [User Manual](#)

[Manuals+](#), [Privacy Policy](#)

This website is an independent publication and is neither affiliated with nor endorsed by any of the trademark owners. The "Bluetooth®" word mark and logos are registered trademarks owned by Bluetooth SIG, Inc. The "Wi-Fi®" word mark and logos are registered trademarks owned by the Wi-Fi Alliance. Any use of these marks on this website does not imply any affiliation with or endorsement.