




FLOWMASTER 818124 Performance System Instruction Manual

[Home](#) » [FLOWMASTER](#) » FLOWMASTER 818124 Performance System Instruction Manual 

Contents

- [1 FLOWMASTER 818124 Performance System](#)
- [2 Product Information](#)
- [3 Product Usage Instructions](#)
- [4 DESCRIPTION](#)
- [5 OVERVIEW](#)
- [6 REMOVE STOCK EXHAUST SYSTEM](#)
- [7 Documents / Resources](#)
 - [7.1 References](#)
- [8 Related Posts](#)



FLOWMASTER 818124 Performance System



Product Information

The product is a Flowmaster performance exhaust system designed for the 2021-22 Ford Bronco with a 2.3L or 2.7L engine. The product includes various parts such as hardware, hangers, clamps, bolts, nuts, washers, inlet pipe, mid pipe, high exit pipe, and hanger keepers.

Hardware Package (PK1081) includes:

- 529HA Rear Frame Hanger – 1
- MC300BS 3 Stainless Band Clamp – 2
- HA168 Red Rubber Hanger – 1
- HW208 / -16 x 1 Bolt – 2
- HW103 / -16 Nut – 2
- HW303 / Flat Washer – 2
- HW309 / Lock Washer – 3
- HW502 / Hanger Keeper – 2
- HW503 / Hanger Keeper – 1
- HW274 / x / L x / Shoulder Bolt – 1

Exhaust System Components:

- 26877S Inlet Pipe – 1
- 26878S Mid Pipe – 1
- 26879S High Exit Pipe – 1

Product Usage Instructions

Remove Stock Exhaust System:

1. Raise the vehicle on a hoist or rack to a working height. If a hoist or rack is not available, support the vehicle with jack stands.
2. Allow the vehicle to cool completely before touching any factory engine components.
3. Support the exhaust and dismount the muffler from the isolators. Loosen the clamp from the inlet and remove the muffler from the vehicle. Dismount the isolators from the factory mounts.
4. Support the front pipe and remove the flange fasteners. Unbolt the isolator mount from the frame, separate the rear wire hanger from the isolator, and remove the front pipe from the vehicle. Keep the flange fasteners, gasket, isolator mount, and bolts for re-use during installation.

Install Flowmaster Exhaust System:

5. Apply an anti-seize compound to threaded fasteners for a more secure installation.
6. For a 2-door model vehicle, trim 15" from the rear of the inlet pipe.
7. Fasten the isolator mount to the inlet pipe with the bolt and lock washer, then place the factory flange gasket. Connect the inlet pipe to the flange with fasteners and secure it by re-bolting the isolator mount to the vehicle frame.

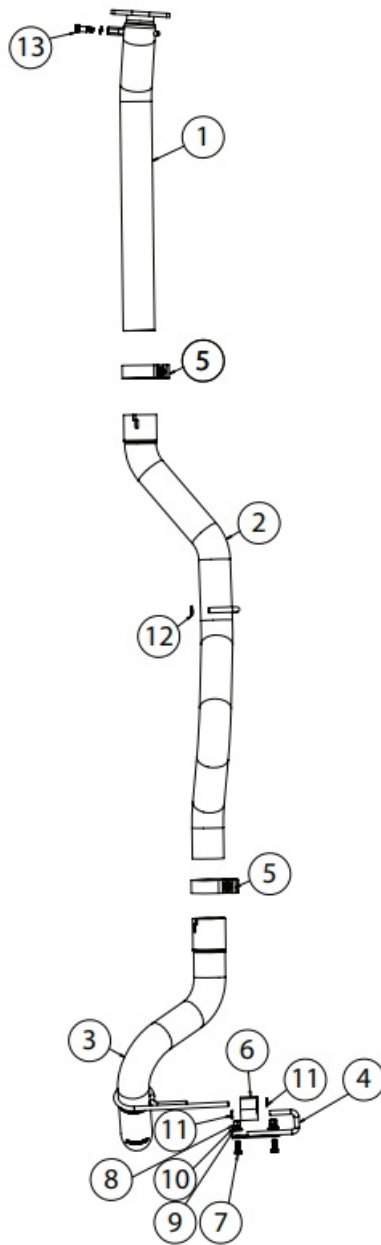
8. Place the clamp onto the mid-pipe and route it over the axle, connecting it to the inlet pipe. Insert wire hanger into isolator and tighten the clamp enough to hold parts.
9. Place the rear frame hanger onto the driver-side rear frame. Fasten it in place with bolts, nuts, flat washers, and lock washers. Place the rubber hanger onto the rear frame hanger.
10. Place the clamp onto the high exit pipe and connect it to the mid-pipe. Insert the wire hanger into the rubber hanger and tighten the clamp just enough to allow for later adjustment.
11. Adjust the exhaust components for fit, maintaining clearance and compensating for suspension travel and vibration. Tighten all clamps. Finally, fit the hanger keepers onto each sideways hanger.

For any further technical support or inquiries, please contact Flowmaster at (866) 464-6553 or visit their website at www.flowmastermufflers.com.

DESCRIPTION

ITM #	PART #	DESCRIPTION	QTY.
1	26877S	Inlet Pipe	1
2	26878S	Mid Pipe	1
3	26879S	High Exit Pipe	1

N/A	PK1081	Hardware Package includes:	1
4	529HA	Rear Frame Hanger	1
5	MC300BS	3" Stainless Band Clamp	2
6	HA168	Red Rubber Hanger	1
7	HW208	3/8-16 x 1 Bolt	2
8	HW103	3/8-16 Nut	2
9	HW303	3/8" Flat Washer	2
10	HW309	3/8" Lock Washer	3
11	HW502	7/8" Hanger Keeper	2
12	HW503	1/2" Hanger Keeper	1
13	HW274	1/2 x 3/4L x 3/8 Shoulder Bolt	1



OVERVIEW

1. Take a moment to read and understand these instructions before installing your Flowmaster performance system.

NOTE: Please inventory all parts now before continuing and if necessary, report any missing items to our tech line. This will avoid potentially stranding your vehicle until any missing replacement parts arrive.

REMOVE STOCK EXHAUST SYSTEM

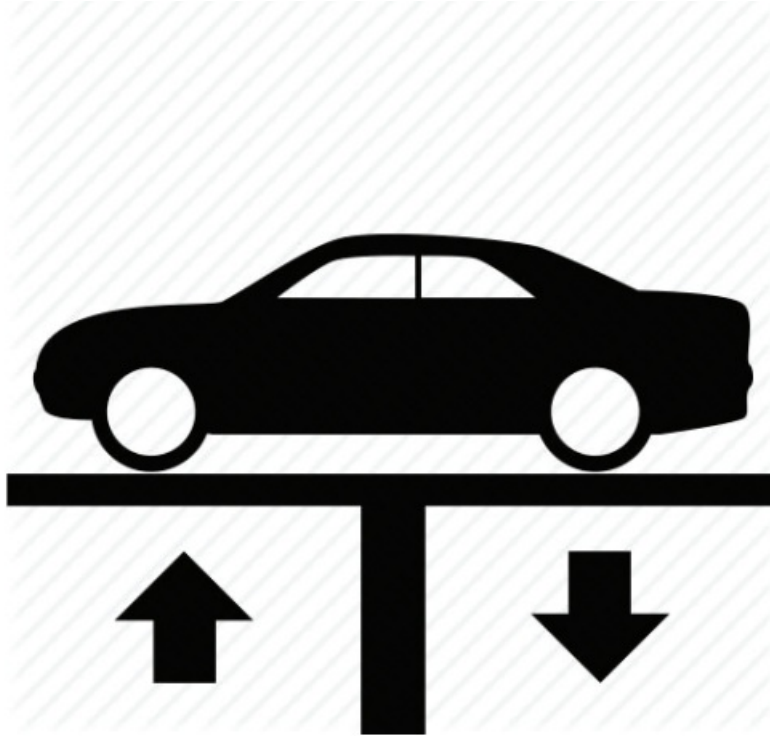
2. Raise the vehicle on a hoist or rack to a working height. If you don't have access to a hoist or rack, support the vehicle with jack stands.

WARNING:

Avoid serious burns! Allow your vehicle to cool completely before touching any factory engine components.

To ease the preparation and installation of your new kit:

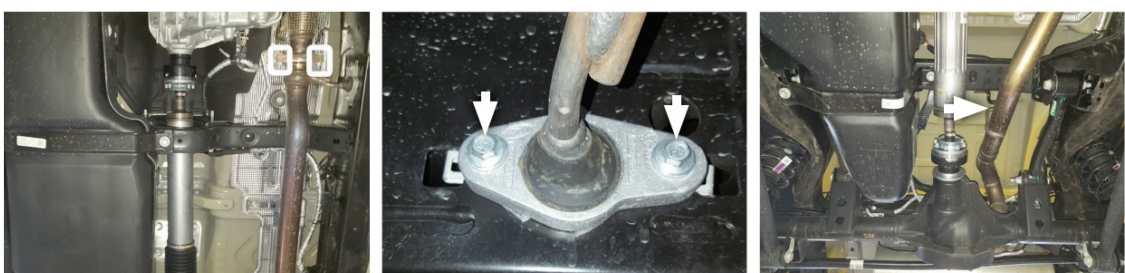
- Apply penetrating lubricant to mounts, bolts, and clamps before you remove them.
- Use stands as necessary to support parts as you detach them from your vehicle and again as you install new parts.



3. Support exhaust then dismount muffler from Loosen clamp from inlet then remove muffler from vehicle.
Dismount isolators from factory mounts.



4. Support the front pipe then remove the flange Unbolt the isolator mount from the frame, separate the rear wire hanger from the isolator then remove the front pipe from the vehicle.
 - **NOTE:** When completing this step, make sure to index and keep flange fasteners, gasket, isolator mount, and (x2) bolts to re-use them during installation.



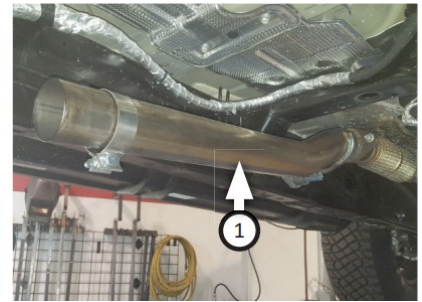
5. Apply to seize compound to threaded fasteners for a more secure install.

- **NOTE:** The image in this step is intended for illustrative purposes only and may or may not accurately reflect the components included in your kit. For this kit to install properly on a 2-door model vehicle: Trim 15" from the rear of the inlet pipe.

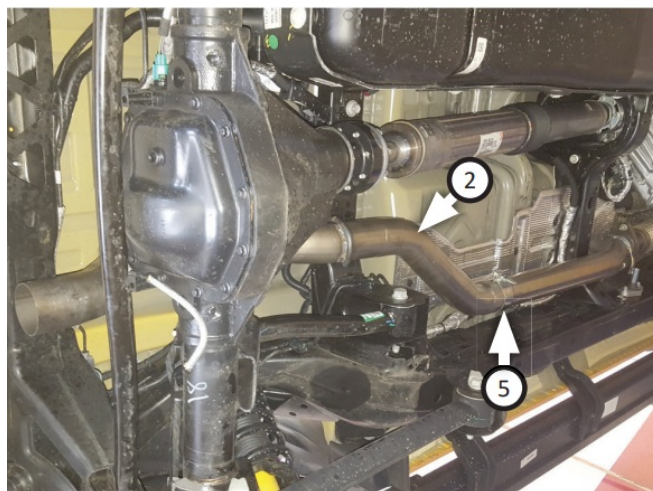


6. Fasten the isolator mount to the inlet pipe (1) with bolt (13) and lock washer (10), then place the factory flange gasket into it. Connect the inlet pipe to flange with fasteners, then secure it by re-bolting isolator mount to the vehicle frame.

- **NOTE:** Fasten parts to vehicle with fasteners and components removed step 4.



7. Place clamp (5) onto the mid-pipe (2) then route it over the axle and connect it to the inlet pipe. Insert wire hanger into isolater then tighten clamp enough to hold parts.



8. Place rear frame hanger (4) onto driver side rear frame. Fasten it in place with (x2 ea.) bolts (7), nuts (8), flange washers (9) and lock washers (10). Place rubber hanger (6) onto the rear frame hanger.



9. Place clamp (5) onto high exit pipe (3) then connect it to mid pipe. Insert wire hanger into rubber hanger then tighten clamp just enough to allow for later adjustment.



10. Adjust exhaust components for maintaining " clearance and compensating ng for suspension, travel, and vibration then tighten all clamps. Finally, fi t (x3) hanger keeper (11,12) onto each sideways hanger.



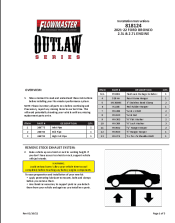
11. **Recommended:** Secure slip-fit connects with a 1-inch tack weld then spray high-temp paint over each weld to prevent rust and premature corrosion.

Congratulations, the installation of your FLOWMASTER performance exhaust system is now complete!

www.flowmastermufflers.com

Technical Support (866) 464-6553

Documents / Resources

	<p>FLOWMASTER 818124 Performance System [pdf] Instruction Manual 818124 Performance System, 818124, Performance System, System</p>
---	--

References

-  [The specialist motor insurer | ERS](#)