




FLOWMASTER 818101 Performance System Instruction Manual

[Home](#) » [FLOWMASTER](#) » FLOWMASTER 818101 Performance System Instruction Manual 

Contents

- [1 FLOWMASTER 818101 Performance System](#)
- [2 Product Information](#)
- [3 Overview](#)
- [4 Package Contents](#)
- [5 OVERVIEW](#)
- [6 REMOVE STOCK EXHAUST SYSTEM](#)
- [7 Diagram](#)
- [8 Documents / Resources](#)
 - [8.1 References](#)
- [9 Related Posts](#)



FLOWMASTER 818101 Performance System



Product Information

- **Product Name:** 2021-22 FORD BRONCO 2.3L & 2.7L ENGINE
- **Model Number:** 818101

Overview

The 2021-22 FORD BRONCO 2.3L & 2.7L ENGINE Performance System is a high-performance exhaust system designed to enhance the overall performance and sound of your vehicle. It includes various components such as hangers, clamps, pipes, and a muffler, all designed to provide improved exhaust flow and increased horsepower.

Package Contents

- **530HA Le Rear Frame Hanger – Quantity : 1**
- **MC300BS 3 Stainless Band Clamp – Quantity: 2**
- **HA168 Red Rubber Hanger – Quantity: 2**
- **HW208 / -16 x 1 Bolt – Quantity: 2**
- **HW103 Nut / -16 – Quantity: 2**
- **HW303 / Flat Washer – Quantity: 2**
- **HW309 / Lock Washer – Quantity: 3**
- **HW502 / Hanger Keeper – Quantity: 4**
- **HW503 / Hanger Keeper – Quantity : 1**
- **26877S Inlet Pipe – Quantity: 1**
- **26878S Mid Pipe – Quantity: 1**
- **8430152-592 Outlaw Muffler – Quantity: 1**
- **PK1082 Hardware Package (including various nuts, bolts, and washers) – Quantity: 1**
- **3401401-00 M8 Lock Nut – Quantity: 2**

- **529HA Right Rear Frame Hanger – Quantity: 1**
- **HW274 / x / L x / Shoulder Bolt – Quantity: 1**

OVERVIEW

Take a moment to read and understand these instructions before installing your Flowmaster performance system.

NOTE: Please inventory all parts now before continuing and if necessary, report any missing items to our tech line. This will avoid potentially stranding your vehicle until any missing replacement parts arrive.

ITEM #	PART #	DESCRIPTION	QTY.
1	26877S	Inlet Pipe	1
2	26878S	Mid Pipe	1
3	8430152-592	Outlaw Muffler	1
N/A	PK1082	Hardware Package includes:	1
4	529HA	Right Rear Frame Hanger	1

REMOVE STOCK EXHAUST SYSTEM

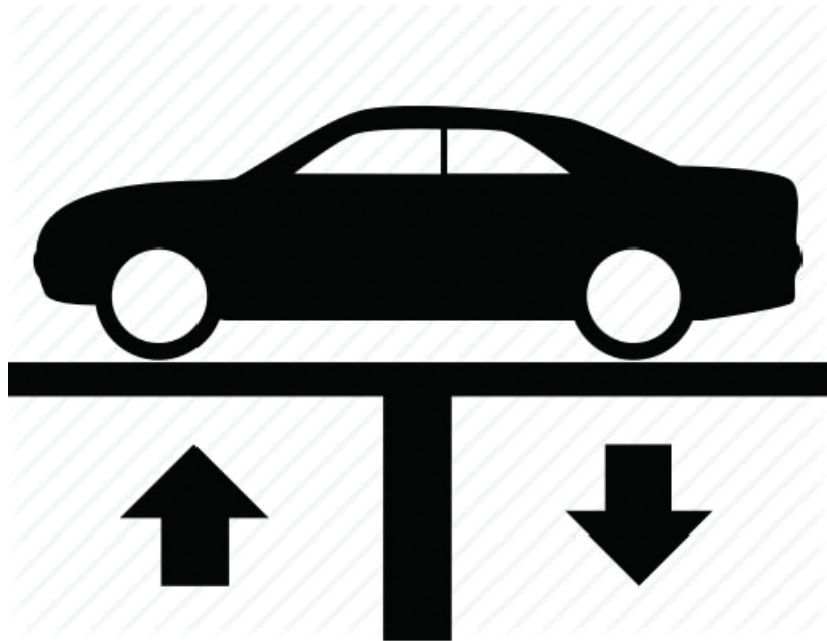
Raise vehicle up on a hoist or rack to working height. If you don't have access to a hoist or rack, support vehicle with jack stands.

WARNING

Avoid serious burns! Allow your vehicle engine to cool completely before touching any factory engine components.

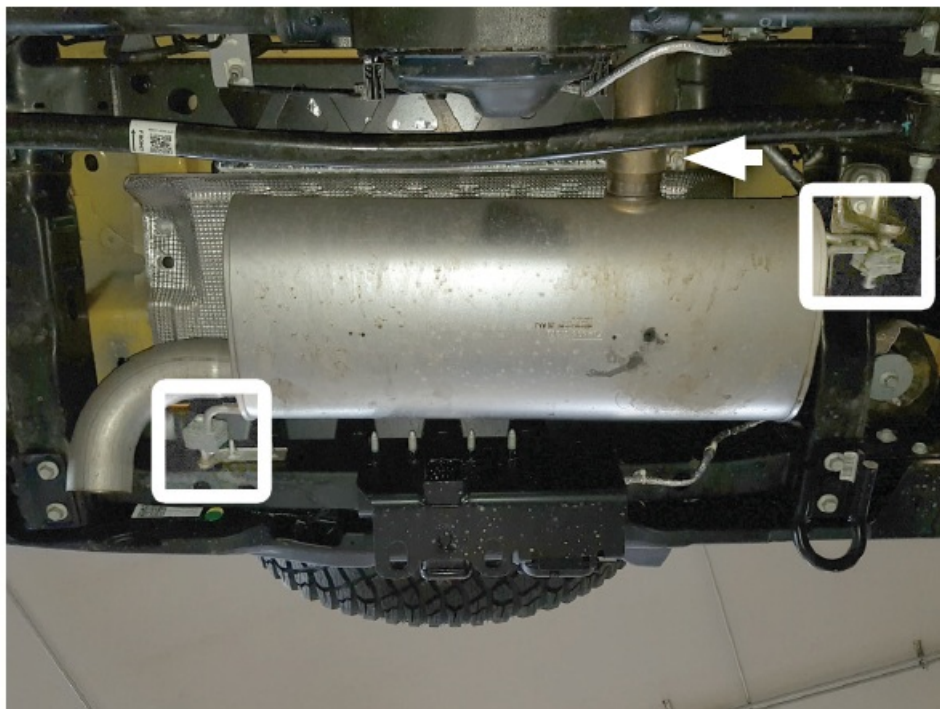
To ease preparation and installation of your new kit

- Apply penetrating lubricant to mounts, bolts and clamps before you remove them.
- Use stands as necessary to support parts as you detach them from your vehicle and again as you install new parts.



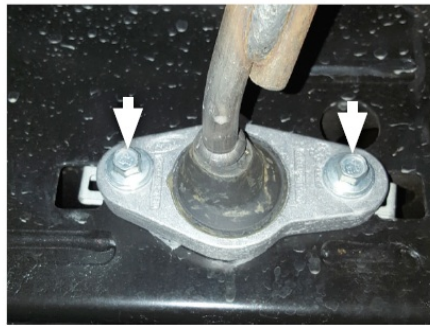
1. Support exhaust then dismount from isolators.

Loosen clamp from inlet then remove muffler from vehicle. Dismount isolators from factory mounts.



2. Support front pipe then remove flange fasteners. Unbolt isolator mount from frame, separate rear wire hanger from isolator then remove front pipe from vehicle.

NOTE: When completing this step, make sure to index and keep flange fasteners, gasket, isolator mount and (x2) bolts to re-use them during install.



INSTALL FLOWMASTER EXHAUST SYSTEM

3. Apply unseize compound to threaded fasteners for a more secure install.

NOTE: The image in this step is intended for illustrave purposes only and may or may not accurately reflect components included in your kit.

For this kit to install properly on a 2-door model vehicle: Trim 15 from rear of inlet pipe.

- 4.

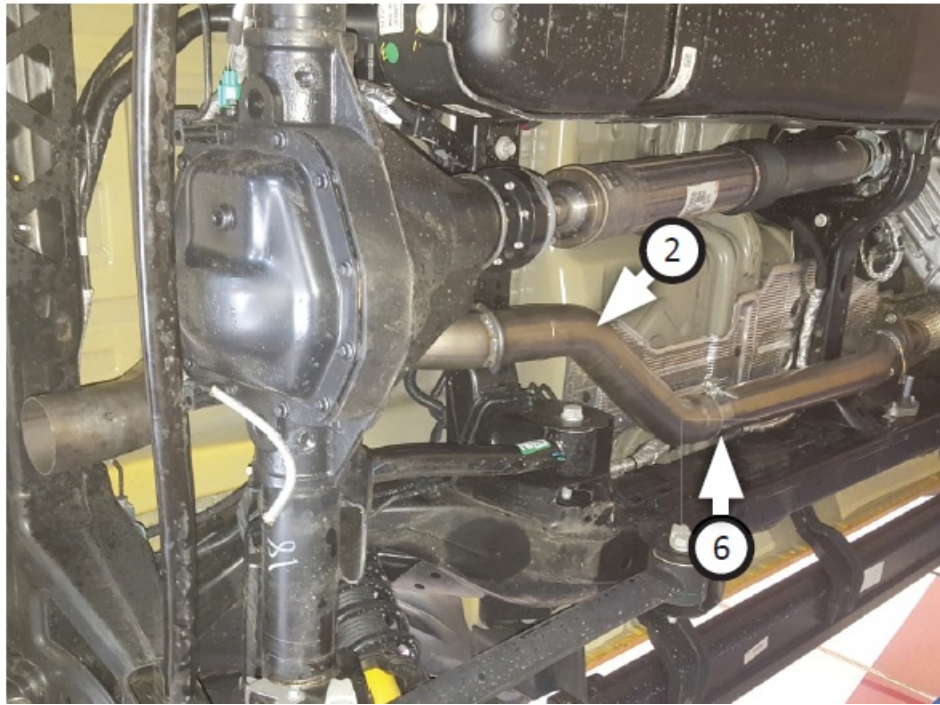


Fasten isolator mount to inlet pipe **(1)** with bolt **(15)** and lock washer (11), then place factory flange gasket into it. Connect inlet pipe to fl ange with fasteners, then secure it by re-boing isolator mount to vehicle frame.

NOTE: Fasten parts to vehicle with fasteners and components removed step 4.

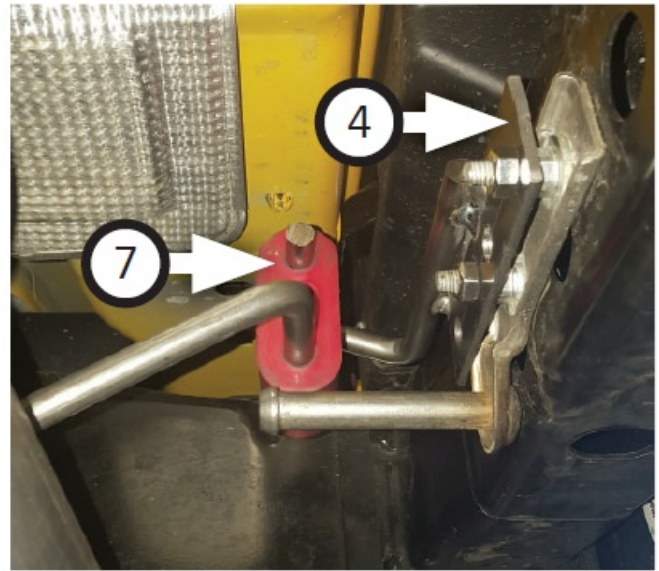
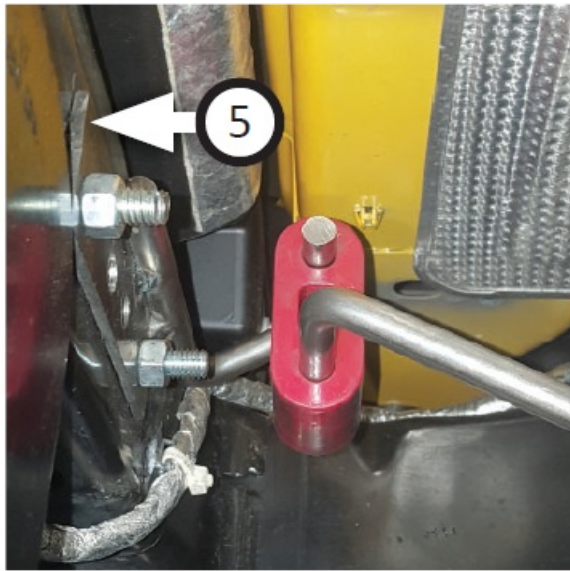


5. Place **clamp (6)** onto mid **pipe (2)** then route itove axle and connect it to inlet pipe. Tighten clamp just enough to allow for adjustment.

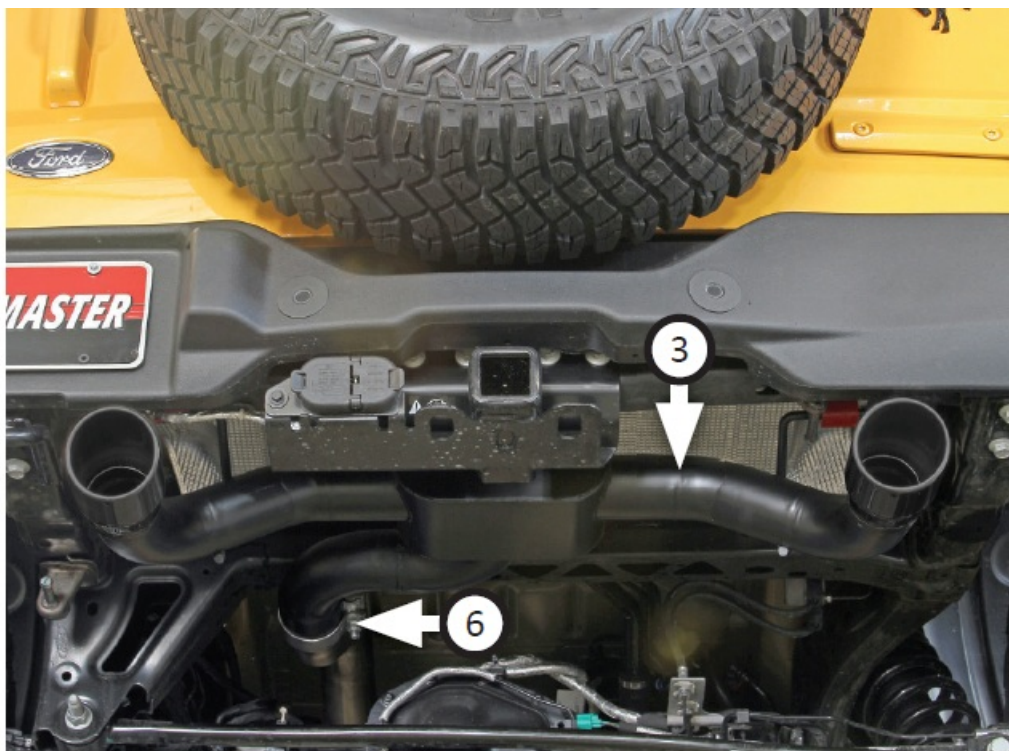


6. Place right rear frame **hanger (4)** onto driver side isolator mount studs and fasten it in place with (x2) lock nuts (14). Place lerear frame **hanger (5)** onto passenger side frame, fastening it with (x2 ea.) bolts (8), lock washers (11), fl at **washers (10) and nuts (9)**. Place (x2) rubber **hangers (7)** onto rear frame hangers.





7. Place **clamp (6)** onto **muffler (3)** then connect it to mid pipe. Insert wire hangers into rubber hangers and tighten clamp enough to allow for adjustment.



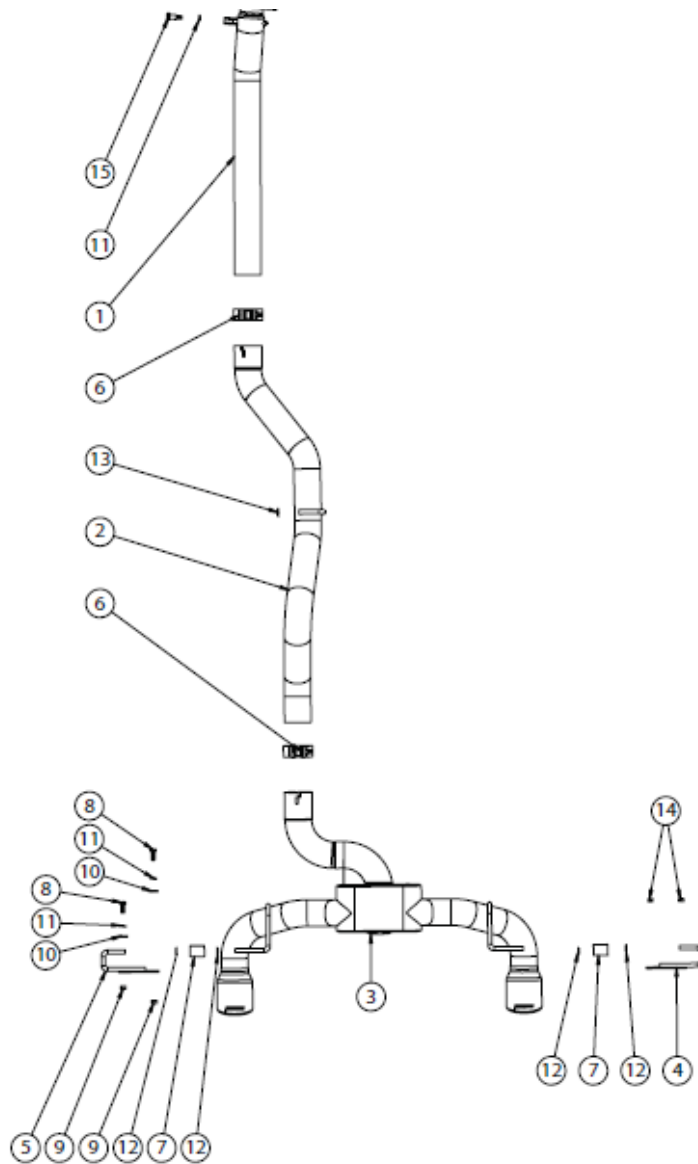
8. Adjust exhaust components for fit; maintaining clearance and compensating for suspension, travel and vibration, then tighten all clamps. Finally, **fit (x5)** hanger keepers (**12, 13**) onto each sideways hanger.
9. Recommended: Secure slip-fit connections with a 1-inch tack weld then spray high-temp paint over each weld to prevent rust and premature corrosion.



Congratulants, the installing of your FLOWMASTER performance exhaust system is now complete



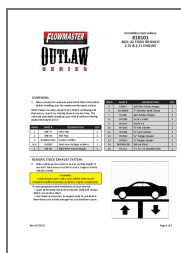
Diagram



www.flowmastermufflers.com

Technical Support (866) 464-6553

Documents / Resources



[FLOWMASTER 818101 Performance System](#) [pdf] Instruction Manual
818101 Performance System, 818101, Performance System, System

References

-  [The specialist motor insurer | ERS](#)

