



FLOW 717995 Performance System Instruction Manual

[Home](#) » [FLOW](#) » FLOW 717995 Performance System Instruction Manual 

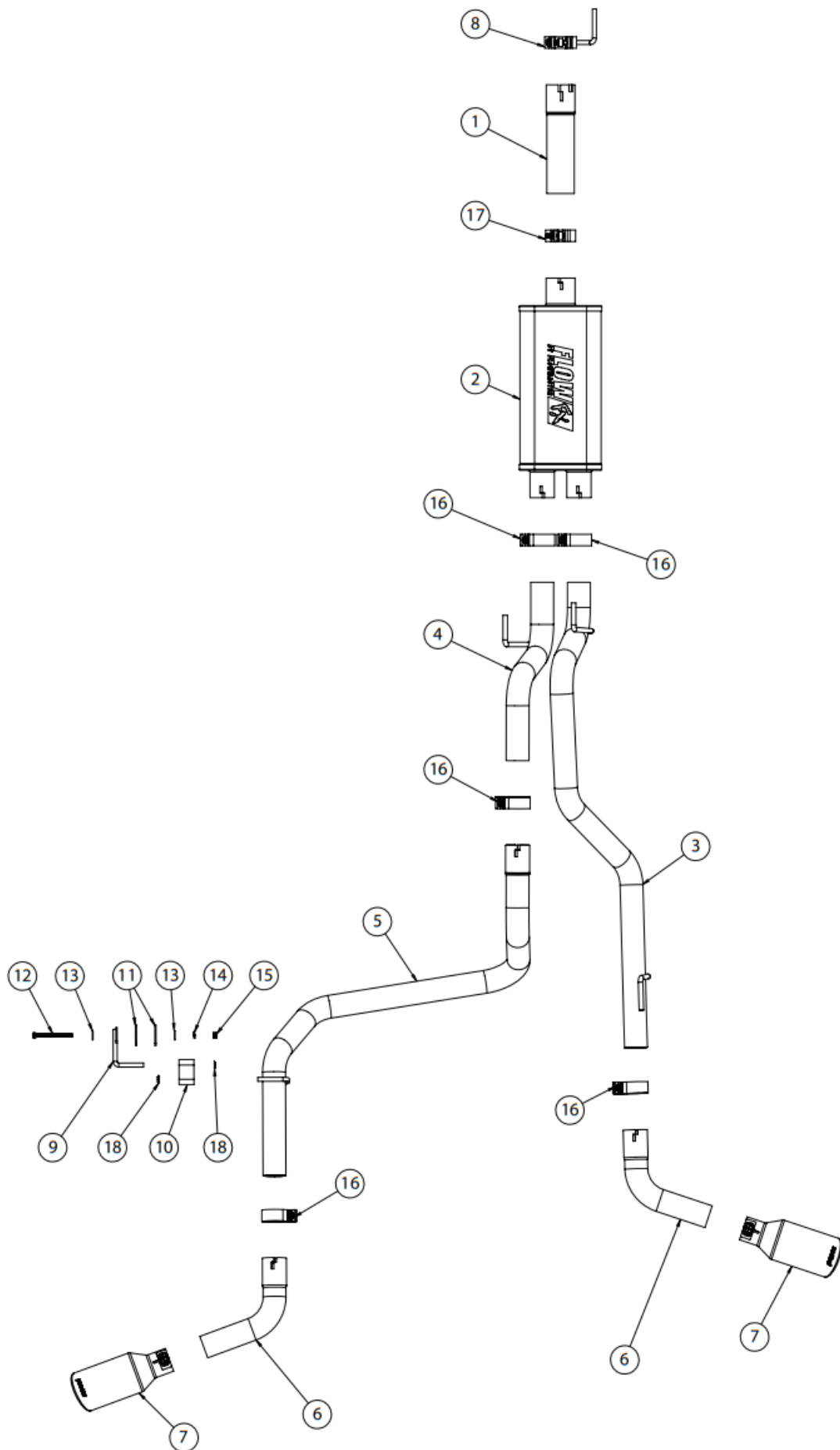


Installaon Instrucons
717995
2006 08 DODGE RAM 1500
5.7L ENGINE

Contents

- [1 OVERVIEW:](#)
- [2 Documents / Resources](#)
 - [2.1 References](#)
- [3 Related Posts](#)

OVERVIEW:



1. Take a moment to read and understand these instructions before installing your Flowmaster performance system.

NOTE: Please inventory all parts now before continuing and if necessary, report any missing items to our tech

line. This will avoid potentially stranding your vehicle until any missing replacement parts arrive.

ITM #	PART #	DESCRIPTION	QTY.
1	TB467M	Inlet Pipe	1
2	72288-Z	FFX Muffler	1
3	16517M	Right Tailpipe	1
4	16518M	Left Front Tailpipe	1
5	16520M	Left Rear Tailpipe	1
6	16317M	Side Exit Pipe	2
7	ST507B	Tips	2

ITM #	PART #	DESCRIPTION	QTY.
N/A	PK521	Hardware Package includes:	1
8	390HA	Clamp Hanger	1
9	226HA	Frame Hanger	1
10	HA168	Rubber Hanger	1
11	HA566	Backing Plate	2
12	HW220	Y8"-16 x 4" Bolt	1
13	HW303	3/8" Flat Washer	2
14	HW309	'A" Lock Washer	1
15	HW103	VS" Nut	1
16	MC250BS	2 1/2" Stainless Band Clamp	5
17	MC300BS	3" Stainless Band Clamp	1
18	HW502	Y16" Hanger Keeper	2

REMOVE STOCK EXHAUST SYSTEM:

2. Raise vehicle up on a hoist or rack to working height. If you don't have access to a hoist or rack, support vehicle with jack stands.

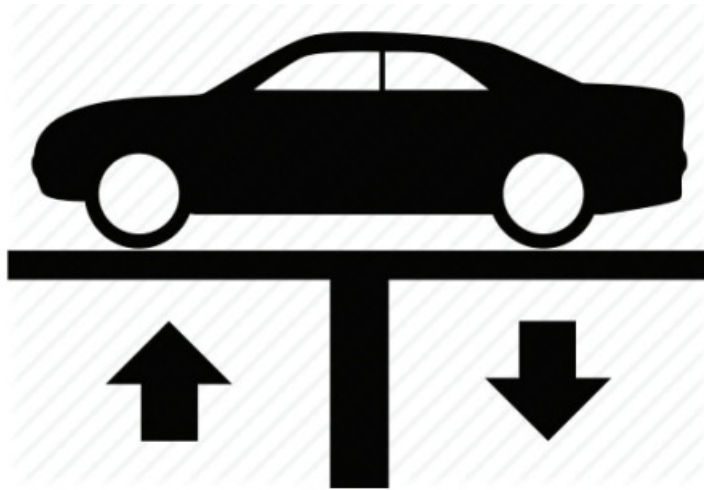
WARNING:

Avoid serious burns! Allow your vehicle time to cool completely before touching any factory engine components.

To ease preparation and installation of your new kit:

- Apply penetrating lubricant to mounts, bolts and clamps before you remove them.

- Use stands as necessary to support parts as you detach them from your vehicle and again as you install new parts.



3. Cut tailpipe at muffl er exit. Disassemble hanger wire from isolator and remove tailpipe sec on from vehicle.



4. Support muffl er and disassemble wire hangers from isolators. Loosen ring clamp, disconnect inlet pipe then remove exhaust system.

NOTE: Clamp connec on may need be heated or cut to be separated.

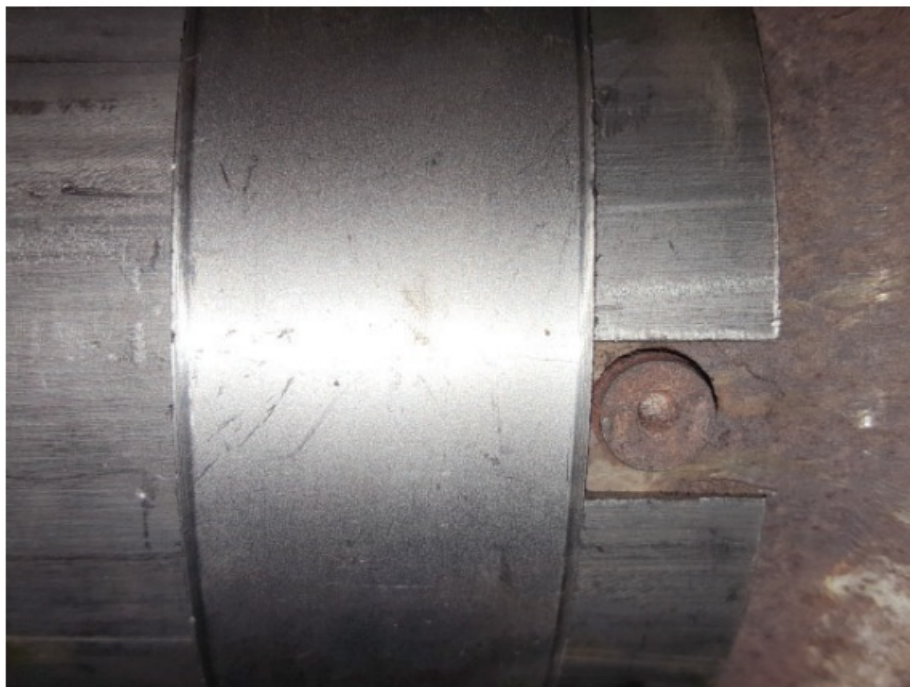


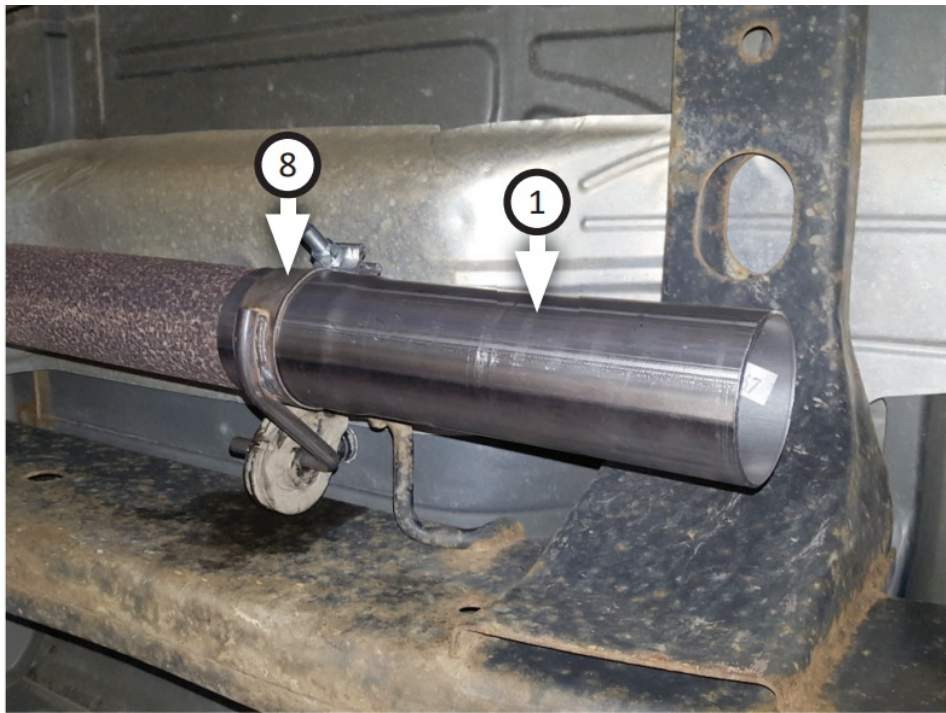
INSTALL FLOWMASTER EXHAUST SYSTEM:

5. Remove nuts from stock and Flowmaster clamps, apply an -seize compound to bolts and re-install nuts.
- NOTE: The image in this step is intended for illustrative purposes only and may or may not accurately reflect components included in your kit.
6. Every slip fit connection in this kit must seat 3" deep except for front muffler connection which must seat 2" deep and rear muffler connections which must seat 1 1/2" deep. Find all slip fit components in your kit and mark them accordingly so your Flowmaster exhaust system fits properly onto your vehicle.

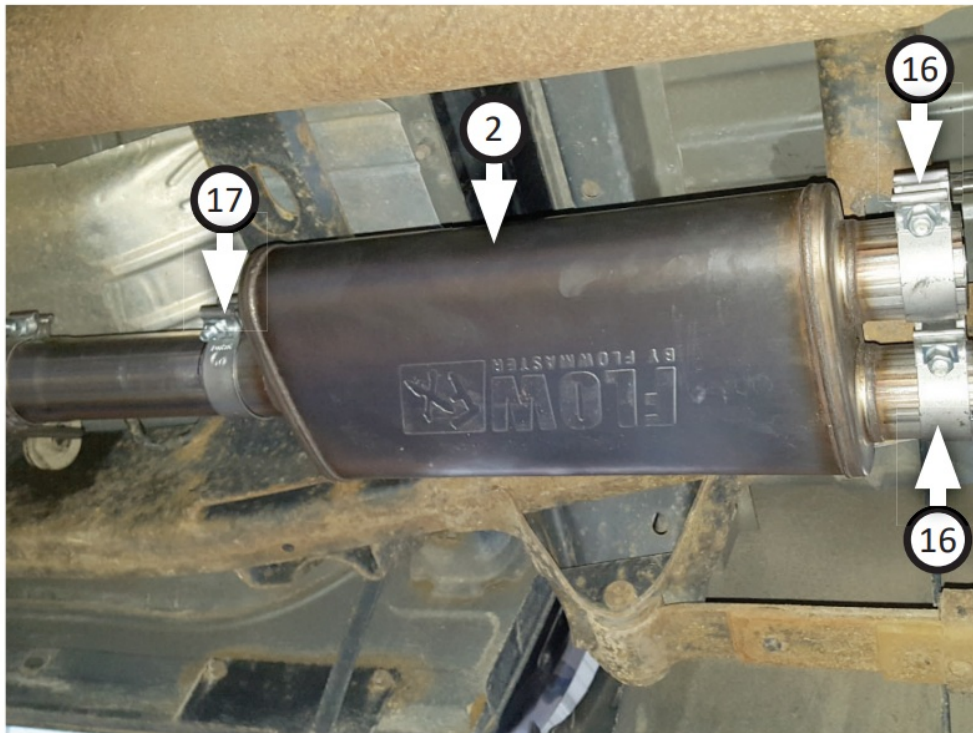


7. Place clamp hanger (8) to inlet pipe (1) then connect it to front pipe; lining inlet pipe notch up to front pipe tab. Insert wire hanger in isolator and tighten clamp enough to allow for adjustment.





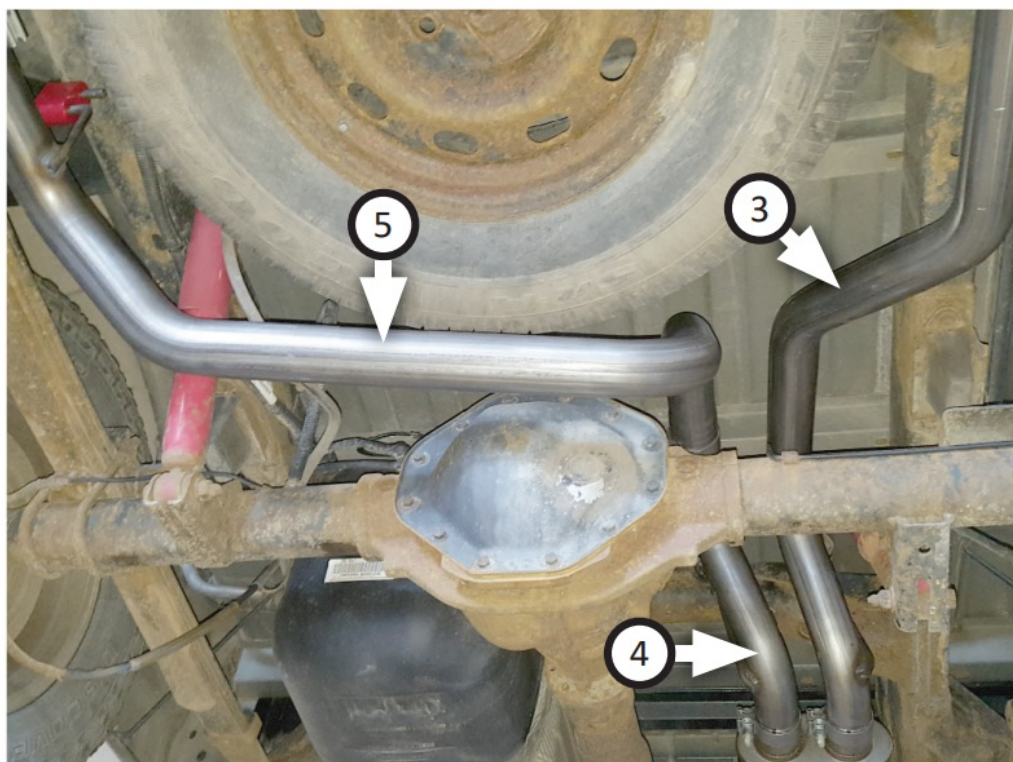
8. Place clamp (17) onto muffler (2) then connect it to inlet pipe. Tighten clamp just enough to allow for adjustment then place (x2) clamps (16) onto muffler outlets.



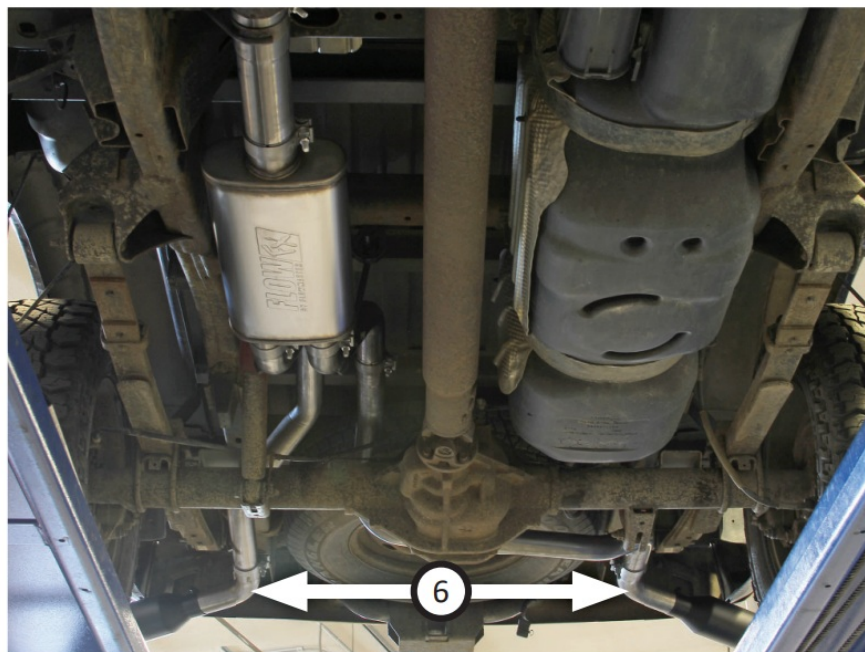
9. Fasten frame hanger (9) to driver side vehicle frame next to spare tire with bolt (12), (x2) backing plates (11), (x2) flat washers (13), lock washer (14) and nut (15). Then hang rubber hanger (10) on frame hanger.



10. Route lefront (4) and right tailpipes (3) over axle then connect them to muffl er. Insert wire hangers into isolators then ghten clamps just enough to hold parts.
11. Place clamp (16) onto le rear tailpipe (5) then connect it to le front tailpipe. Insert wire hanger into rubber hanger then ghten clamp enough to hold parts.



12. Place (x2 ea.) clamps (16) onto side exit pipe (6) and connect them to tailpipes; ghten clamps to hold parts.
13. Place (x2) ps (7) onto side exit pipes and ghten inlets.
Rotate exit pipes and ps to desired distance from body or bumper, so angle cut on ps are properly posi oned.
14. Adjust exhaust components for fi t; maintaining /" clearance and compensa ng for suspension, travel and vibra on then ghten all clamps. Finally, fi t (x2) hanger keepers (18) onto each sideways hanger.
15. Recommended: Secure slip-fi t connec ons with a 1-inch tack weld then spray high-temp paint over each weld to prevent rust and premature corrosion.



Congratulaons, the installaon of your FLOWMASTER performance exhaust system is now complete!




717995

Rev 12/09/21

www.flowmastermufflers.com

Technical Support (866) 464-6553

Documents / Resources



[FLOW 717995 Performance System](#) [pdf] Instruction Manual
717995 Performance System, 717995, Performance System, System

References

-  [The specialist motor insurer | ERS](#)