



FLOS Light Shadow Pro Fixed Optic Flood Instruction Manual

[Home](#) » [FLOS](#) » FLOS Light Shadow Pro Fixed Optic Flood Instruction Manual 

Contents

- [1 FLOS Light Shadow Pro Fixed Optic Flood](#)
- [2 INSTRUCTIONS OF INSTALLATION AND USE](#)
- [3 CLEANING INSTRUCTIONS](#)
- [4 Installation](#)
- [5 NO TRIM ADJUSTABLE](#)
- [6 TO REMOVE](#)
- [7 TRIM](#)
- [8 TRIM FIXED](#)
- [9 TRIM ADJUSTABLE](#)
- [10 Documents / Resources](#)
- [11 Related Posts](#)

FLOS

FLOS Light Shadow Pro Fixed Optic Flood



INSTRUCTIONS OF INSTALLATION AND USE

ATTENTION

The safety of the device can only be guaranteed on condition that to be respected the following instructions, both stages of installation and use therefore it is highly recommended to keep them

WARNING:

To carry out the installation, and whenever an operation in the device is carried out, make sure of having disconnected the electric power.

The device cannot be in any case modified or forced, any modification might jeopardize the safety system making it dangerous. FLOS declines any responsibility for modified products.

The device has been designed for inside.

IP20 Ordinary.

IP X4 Protected against water splash

IP 5X Protected against penetration of dust

Class III luminaire: Device with a very low safety voltage. Connect the main cables to the remote led power supply SELV under the EN 61347-2-13 standard, respecting the right polarity (red positive – black negative).

Devices with a very low safety voltage showing the (BTS) mark should not be connected to earthing conductors.

Luminaires are intended for direct assembly on surfaces that are nominally flammable.

If the flexible cable or cord of this luminaire is damaged, it should be exclusively replaced by the manufacturer or his technical service or a qualified person in order to avoid any risk.

Use appropriate equipment and in agreement with the standard.

The luminaire should only be used with Flos's accessories or Components.

The symbol shown on the device indicates that the product must be eliminated differently from the rest of the urban waste.

CLEANING INSTRUCTIONS

Use only a soft cloth to clean the appliance. For stubborn dirt, dampen the cloth with water and clean only the reflector and the outer part of the appliance. Do not clean or touch, the LED light source in any way.

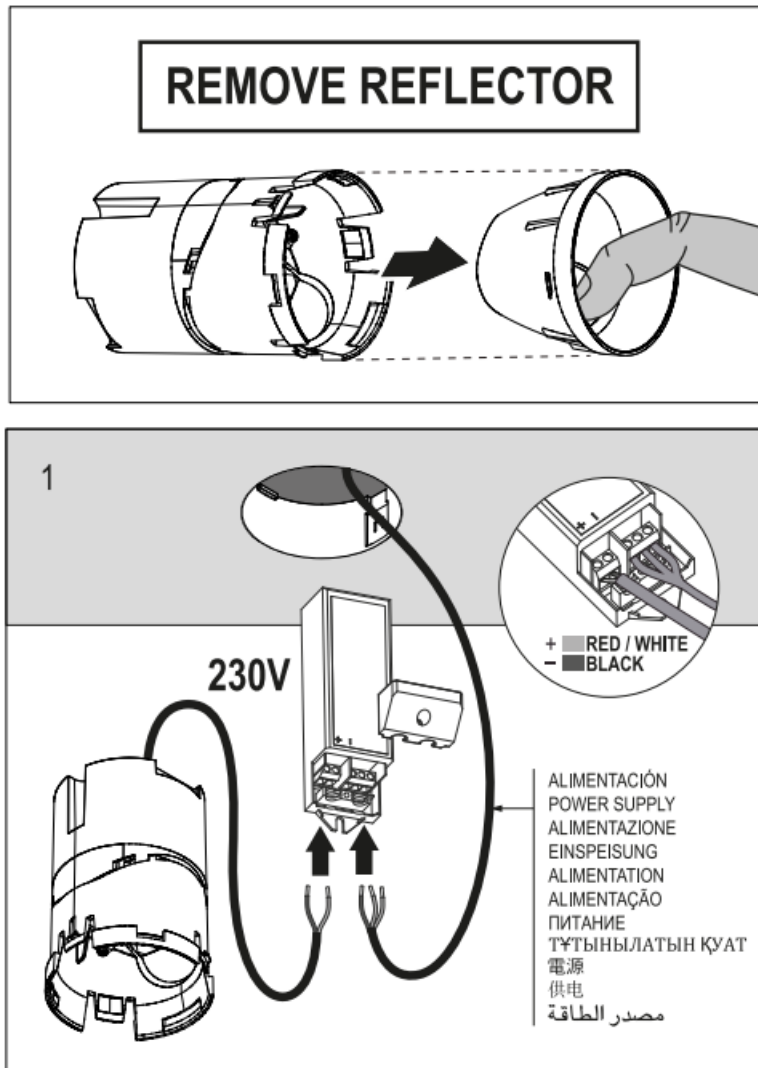
Warning: do not use alcohol or other solvents.

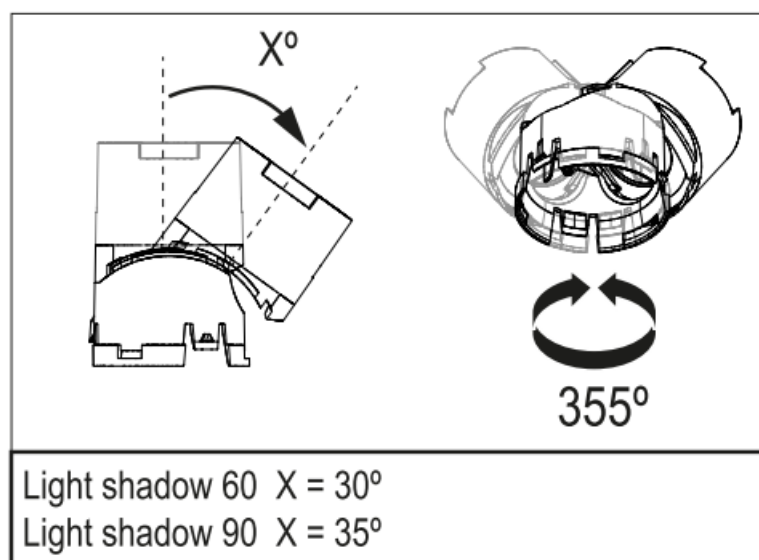
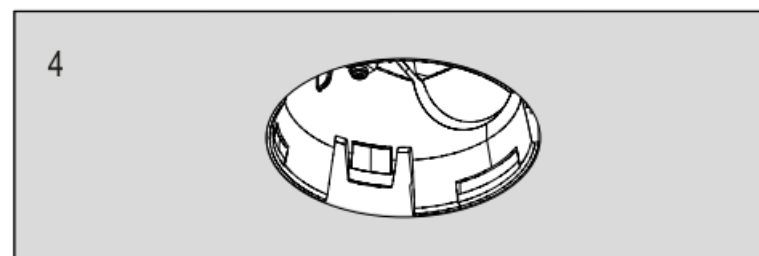
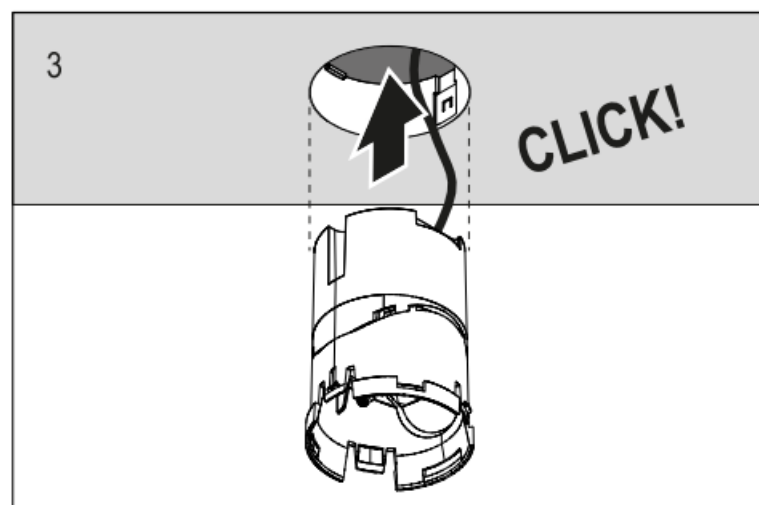
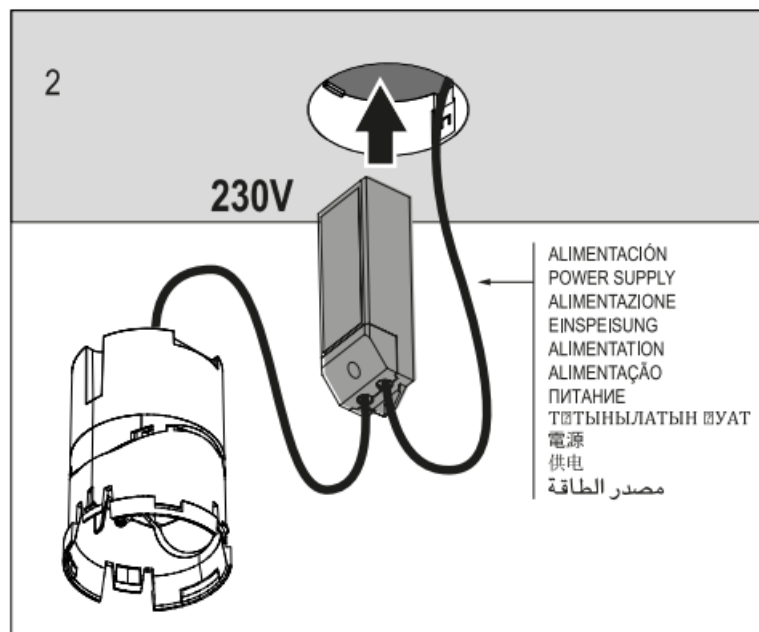
The light source contained in this luminaire shall only be replaced by the manufacturer or his service agent or a similarly qualified person.

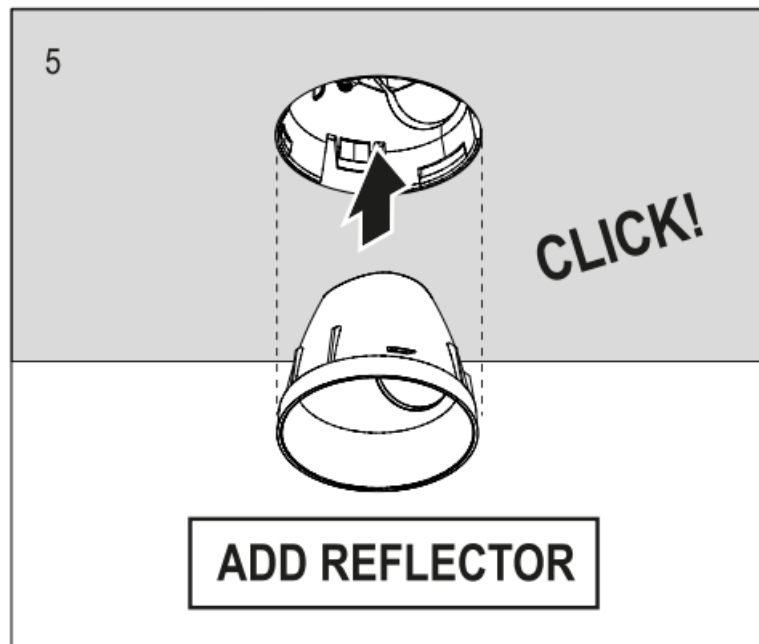
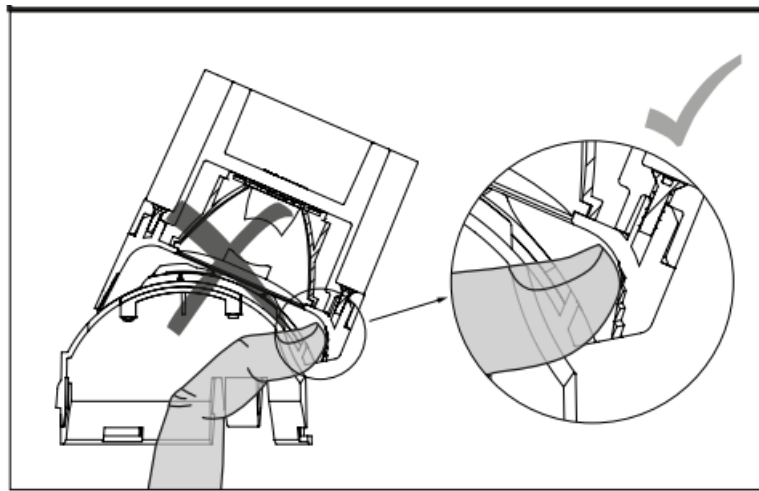
Please refer to the product label to check the electrical specifications

Installation

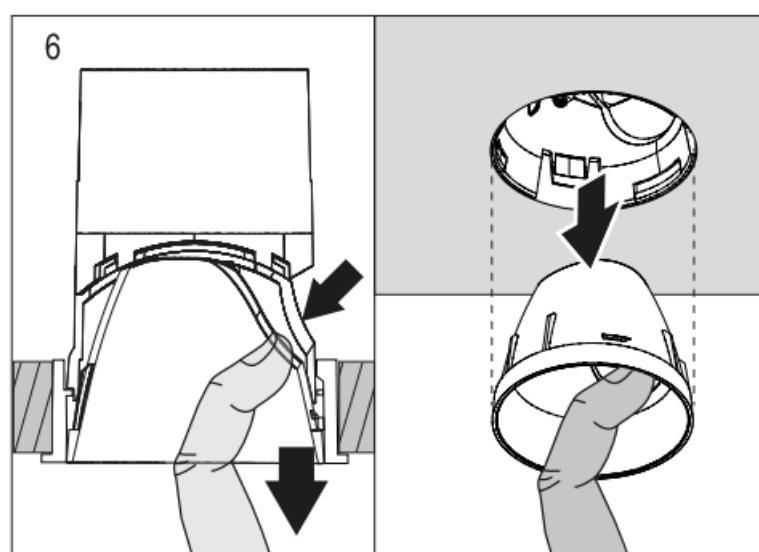
NO TRIM ADJUSTABLE



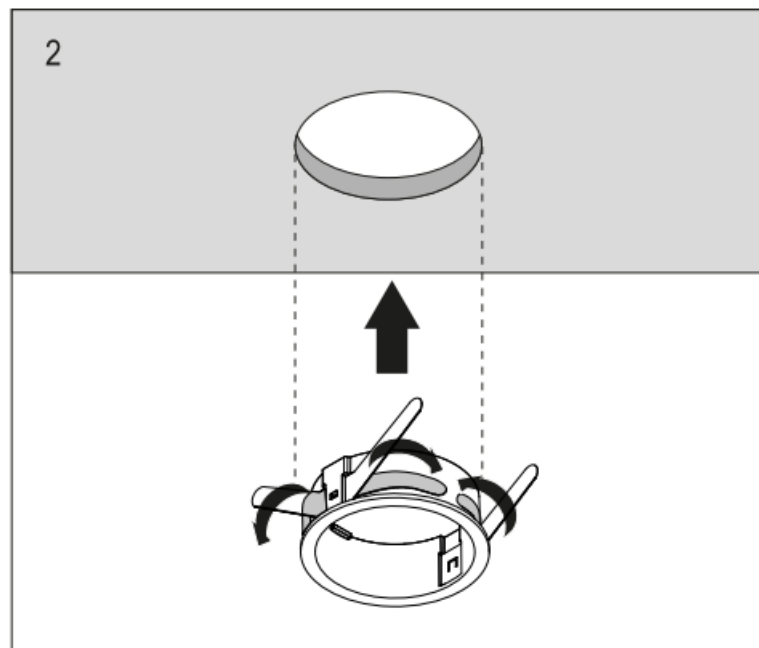
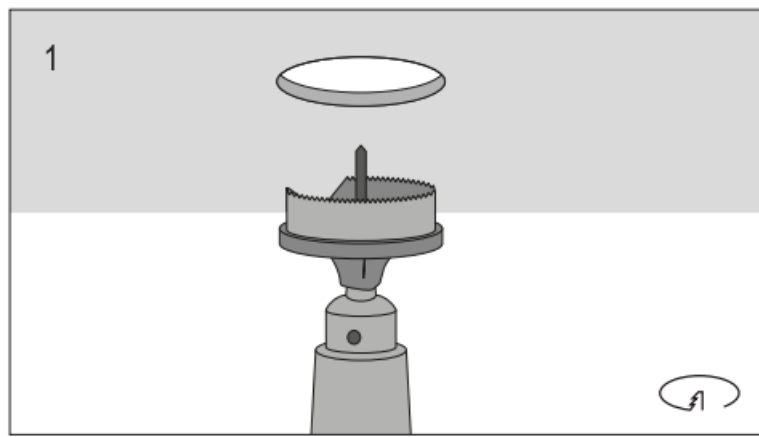




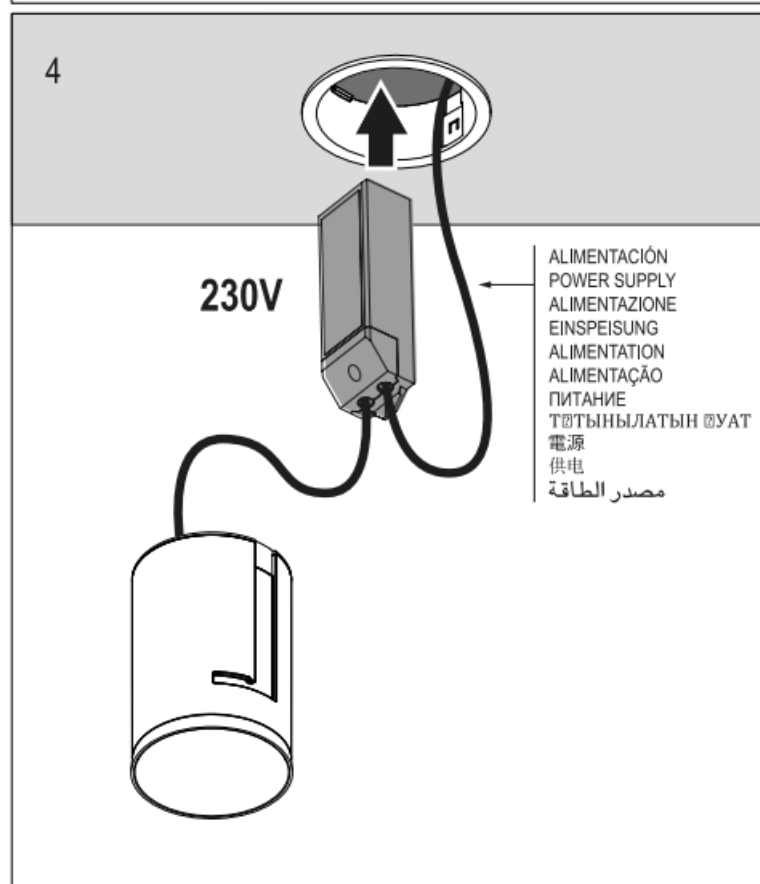
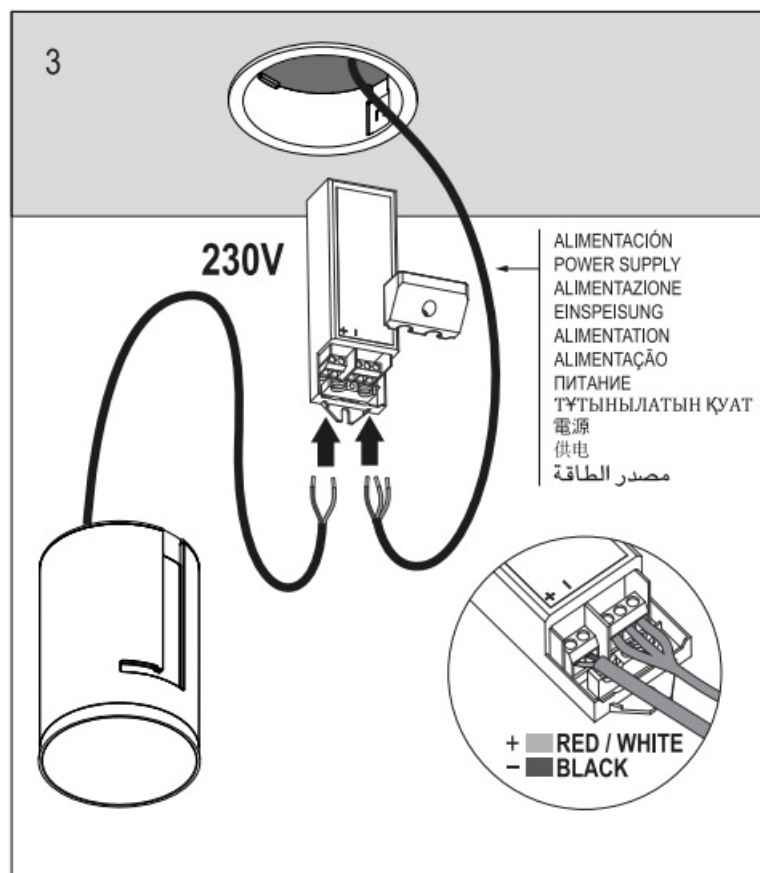
TO REMOVE

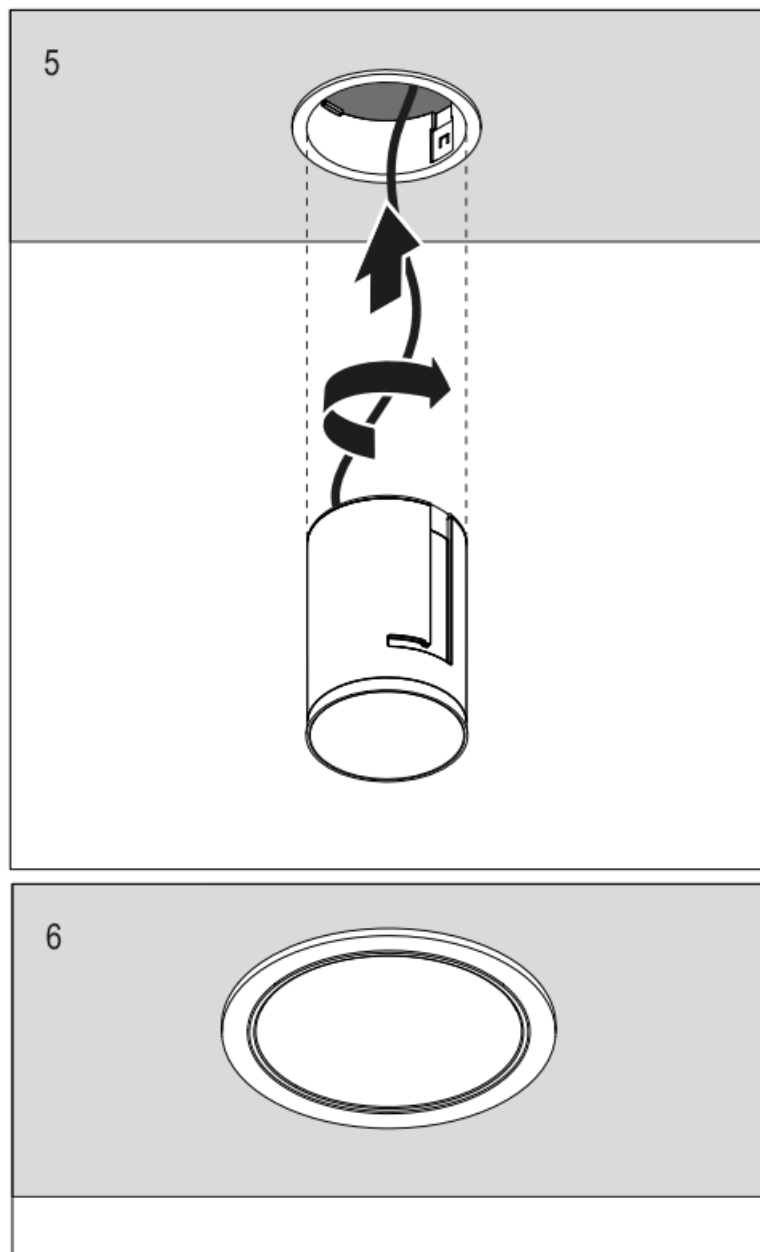


TRIM

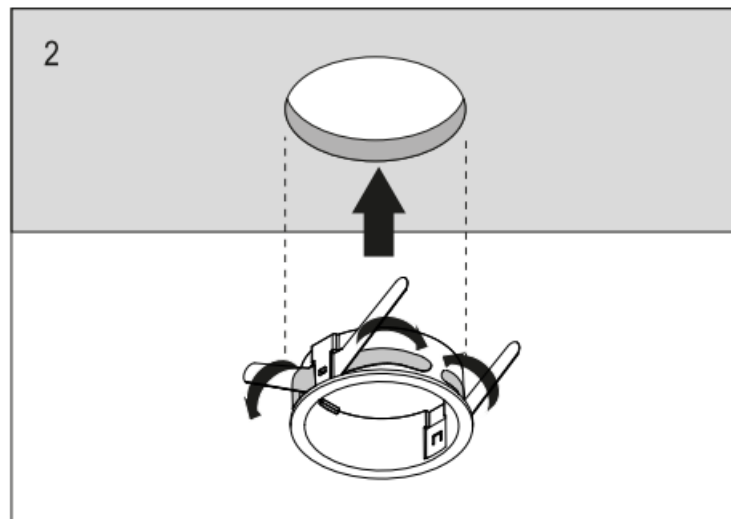
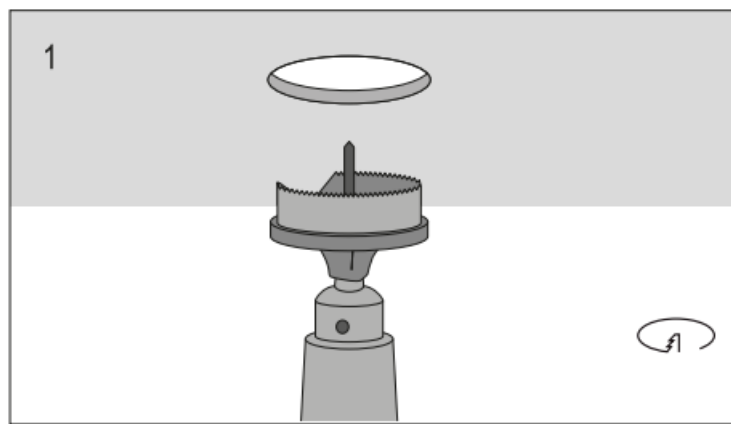


TRIM FIXED

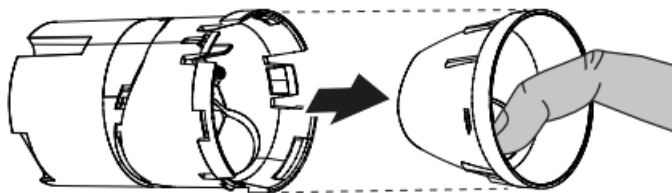




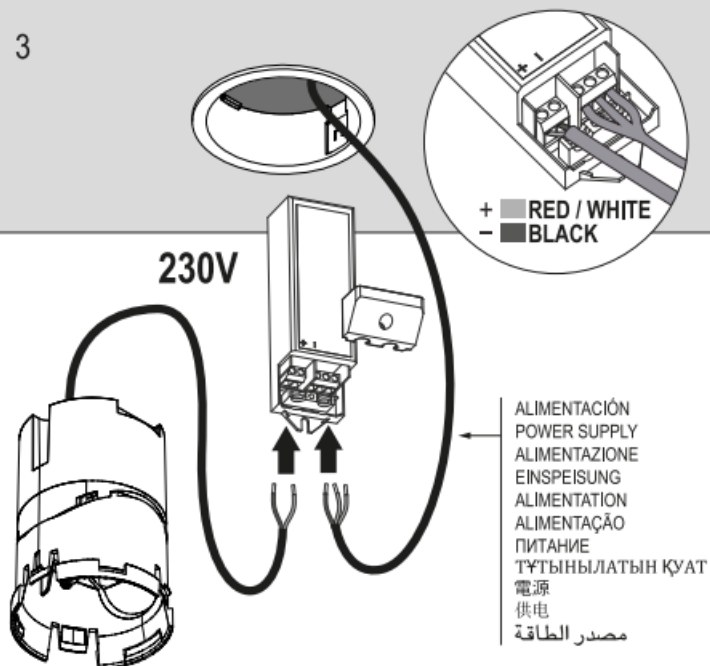
TRIM ADJUSTABLE



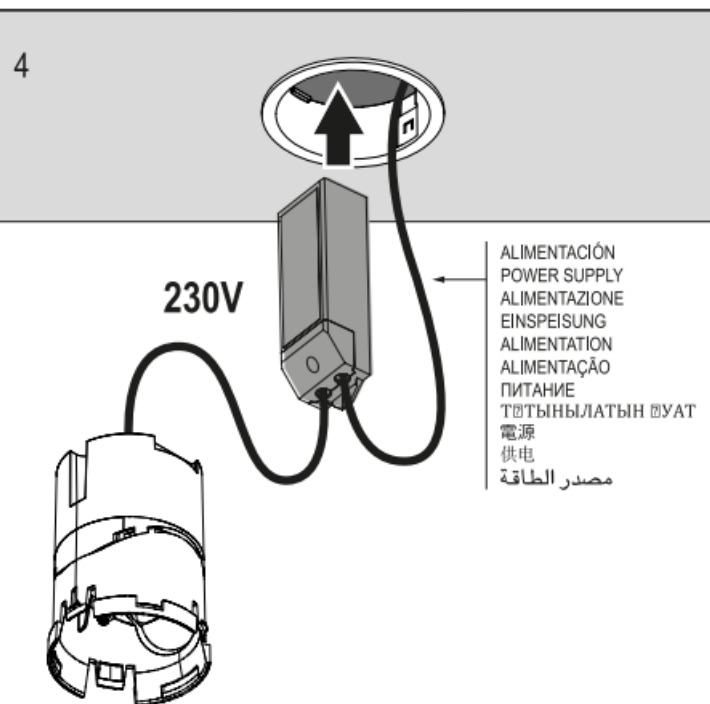
REMOVE REFLECTOR

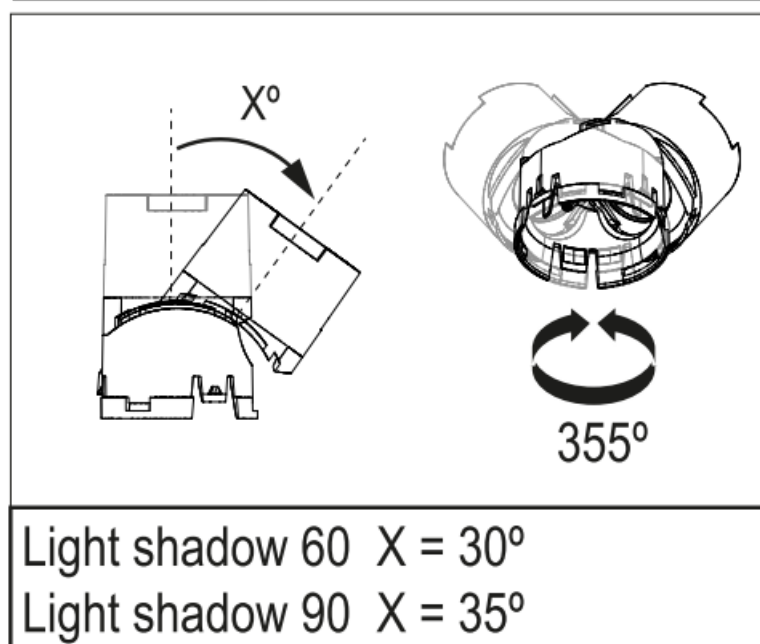
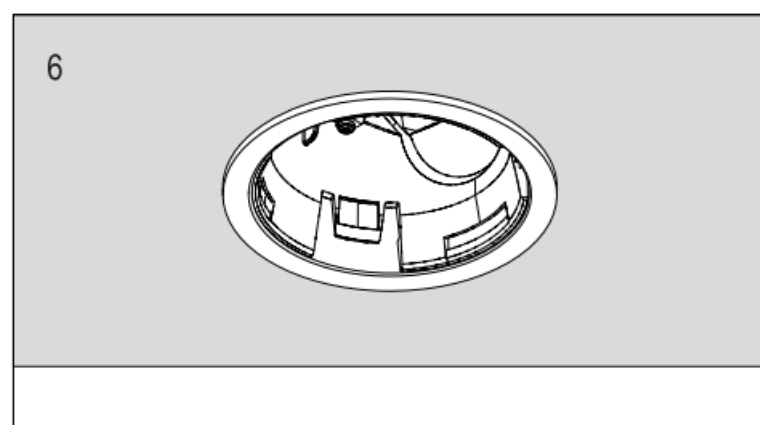
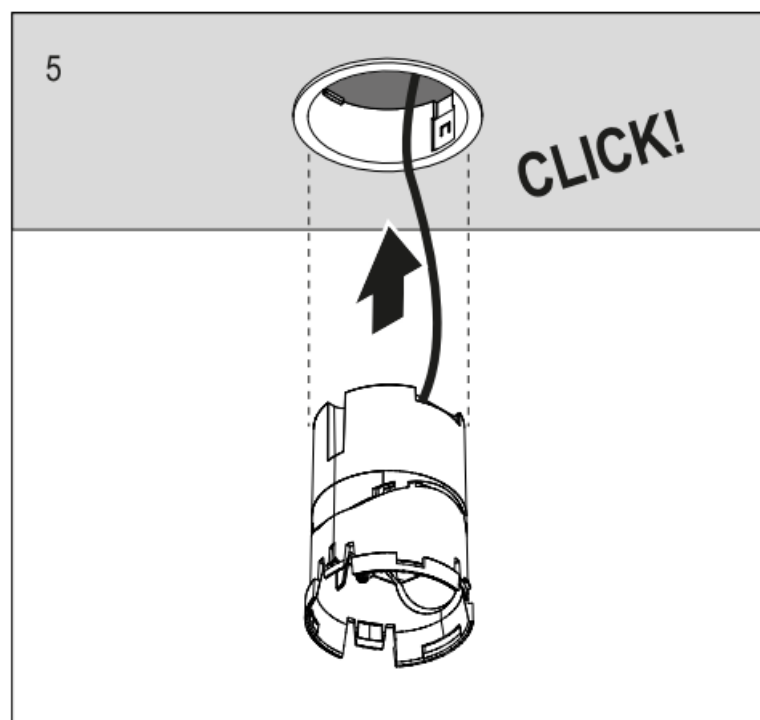


3



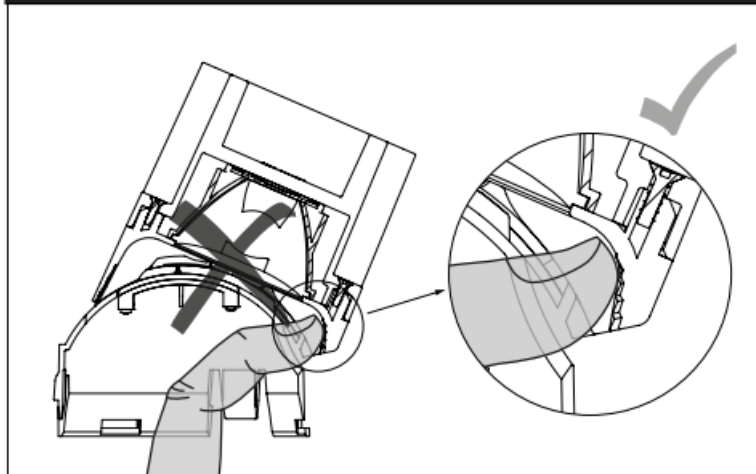
4



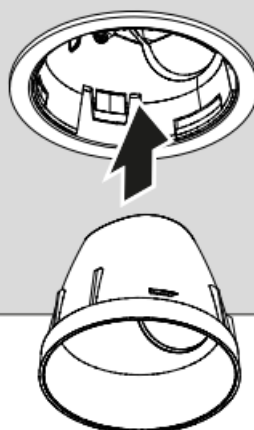




WARNING: Don't touch the lens with your finger.

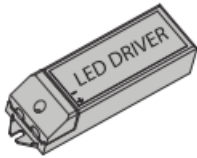


7



CLICK!

ADD REFLECTOR

	$\text{SELV} \leq 60 \text{ V}_{\text{out}}$
---	--



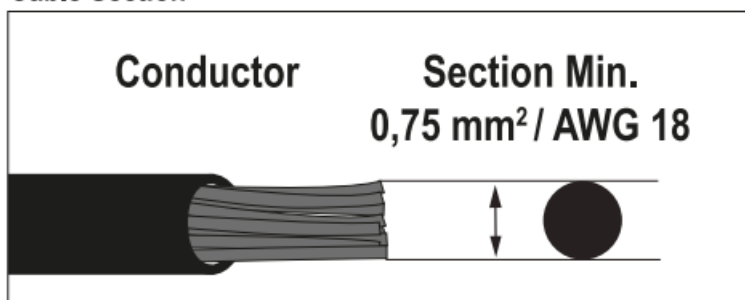
ATTENTION

The voltage under load does not exceed 25 V r.m.s. or 60 V ripple-free d.c. and the no-load voltage does not exceed 35 V peak or 60V ripple-free d.c.



KEEP INSIDE ESD SAFETY BAG

Cable Section



Documents / Resources



[FLOS Light Shadow Pro Fixed Optic Flood](#) [pdf] Instruction Manual
Light Shadow Pro, Fixed Optic Flood