



FLOS 12 mt String Light Instruction Manual

[Home](#) » [FLOS](#) » FLOS 12 mt String Light Instruction Manual 

FLOS 12 mt String Light Instruction Manual



Contents

- [1 INSTRUCTION FOR CORRECT INSTALLATION AND USE](#)
- [2 Configuration Examples](#)
- [3 Documents / Resources](#)
 - [3.1 References](#)
- [4 Related Posts](#)

INSTRUCTION FOR CORRECT INSTALLATION AND USE

WARNING!

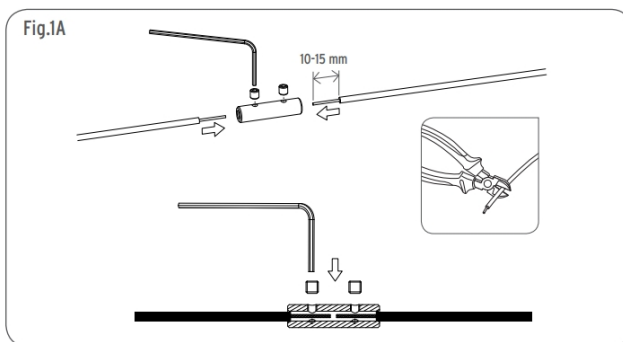
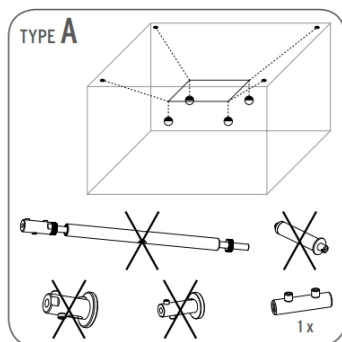
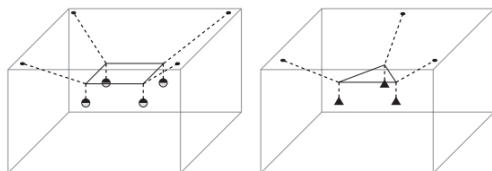
The safety of the connection box is guaranteed only if these instructions are complied with, both during installation and during use. It is therefore necessary to keep these instructions in a safe place.

WARNING:

- When installing and whenever acting on the appliance, ensure that the power supply has been switched off.
- The appliance may in no way be modified or tampered with, any modification may compromise safety causing the appliance to become dangerous. FLOS declines all responsibility for products that are modified.

Configuration Examples

TYPE A RING



TYPE B TENSION

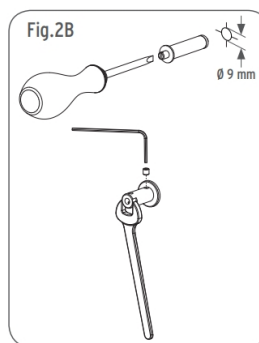
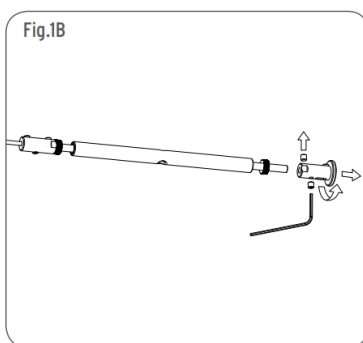
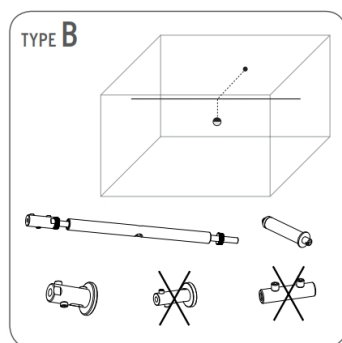
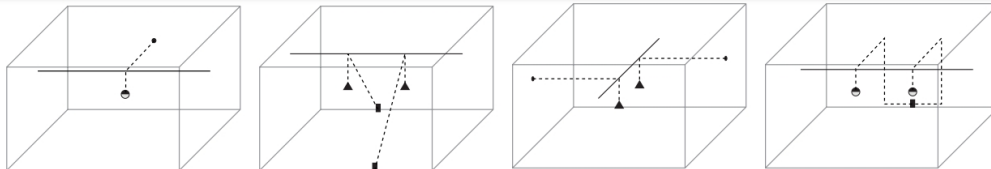


Fig.3B

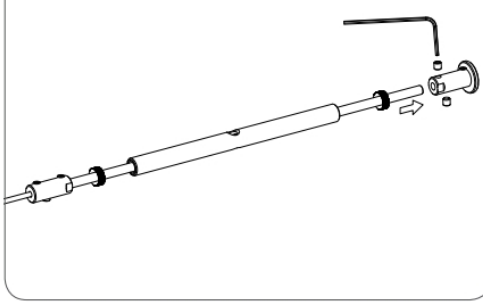


Fig.4B

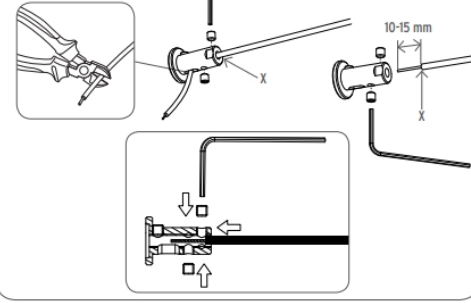
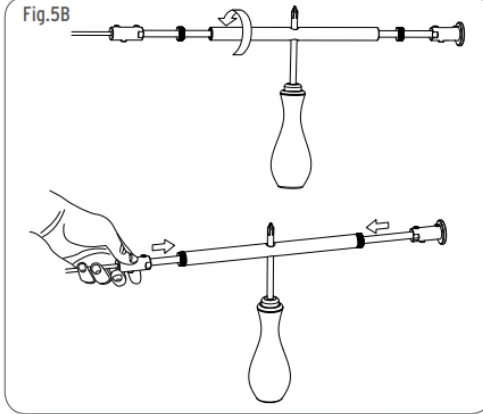


Fig.5B



TYPE C DEFLECTION

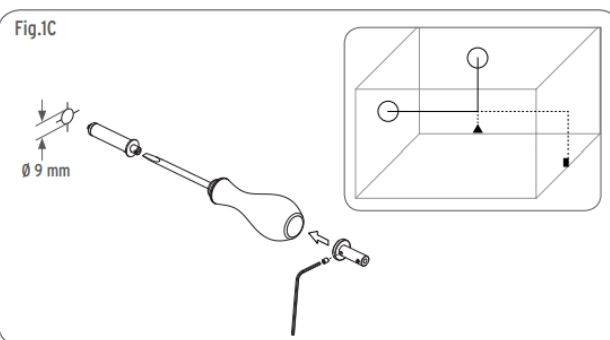
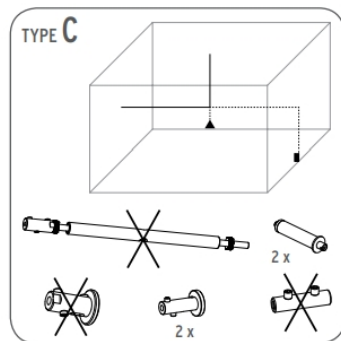
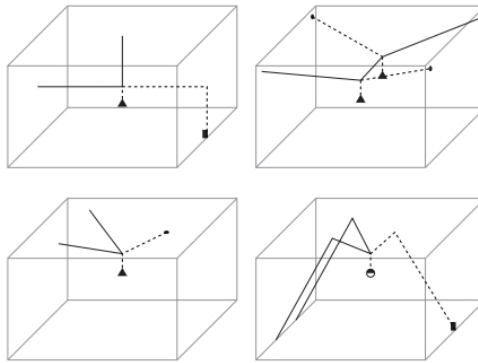
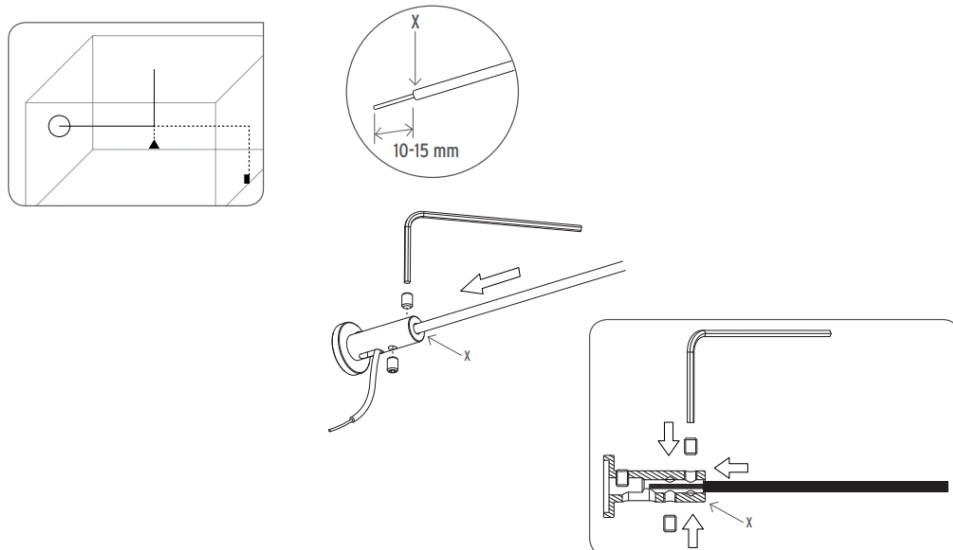



Fig.2C



www.flos.com

FLOS

Documents / Resources

	<p>FLOS 12 mt String Light [pdf] Instruction Manual 12 mt, String Light, 12 mt String Light, Light</p>
---	--

References

- F [Flos Official Online Store | Contemporary Lighting and Decorative Lights](#)