



FLOS 03.6296.14 Running Magnet String Light Module Instruction Manual

[Home](#) » [FLOS](#) » FLOS 03.6296.14 Running Magnet String Light Module Instruction Manual 

Contents

- [1 FLOS 03.6296.14 Running Magnet String Light Module](#)
- [2 INSTRUCTIONS OF INSTALLATION AND USE](#)
- [3 TECHNICAL DATA](#)
- [4 TECHNICAL DATA](#)
- [5 LUMINAIRE INSTALLATION](#)
 - [5.1 OPTION ONE](#)
 - [5.2 OPTION TWO](#)
- [6 EXAMPLE](#)
- [7 Documents / Resources](#)
- [8 Related Posts](#)



FLOS 03.6296.14 Running Magnet String Light Module



INSTRUCTIONS OF INSTALLATION AND USE

ATTENTION!

The safety of the device can only be guaranteed on condition that to be respected the following instructions, both stages of installation and use therefore it is highly recommended to keep them.

WARNING:

To carry out the installation, and whenever an operation in the device is carried out, make sure of having disconnected the electric power. The device cannot be in any case modified or forced, any modification might jeopardize the safety system making it dangerous. FLOS declines any responsibility on modified products. The device has been designed for inside. IP20 Ordinary.

Luminaire kind III: Device with a very low tension of safety. The conformity with the standard is only guaranteed if the device is powered by a safety transformer according to the standard Cenelec EN 604472 or by equal safety sources. Devices with a very low voltage of safety (BTS) marked, do not have to be connected to drivers with earth socket.

If the flexible cable or cord of this luminaire is damaged, it should be exclusively replaced by the manufacturer or his technical service or a qualified person in order to avoid any risk.

TECHNICAL DATA

Lighting device of the Group of risk 1: Low, according to the standard EN 62471:2008

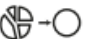
The symbol shown on the device indicates that the product must be eliminated differently from the rest of the urban waste.

CLEANING INSTRUCTIONS

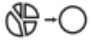
Use only a soft cloth to clean the appliance, dampened with water and soap or mild cleanser if needed for resistant dirt.

Warning: do not use alcohol or other solvents. Connect the mains cables to the remote power supply unit SELV or SELV EQUIVALENT in according to the law EN 61347-2-13, respecting the right polarity (red positive – black negative)

Luminaires intended for direct assembly on surfaces that are normally flammable.

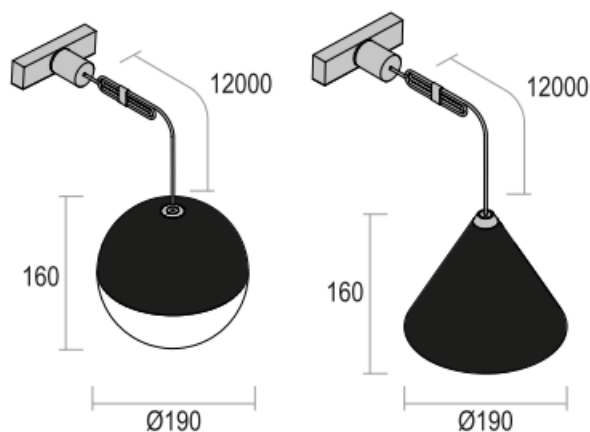
-  The symbol marked on the device indicates the replacement of the damaged protection screens using

exclusively original FLOS spare parts. Do not use the luminaire without glass.

-  Do not use the luminaire without glass. In case of glass breakage, contact the manufacturer for a replacement.

TECHNICAL DATA

STRING LIGHTS



SPHERE AND CONE					
CONE RM					
03.6297-98.14	POWER LED	2700K	CRI90	17,4W	
CONE RM DALI					
03.6297-98.14.DA/CB	POWER LED	2700K	CRI90	17,4W	
SPHERE RM					
03.6295-96.14	POWER LED	2700K	CRI90	17,4W	
SPHERE RM DALI					
03.6295-96.14.DA/CB	POWER LED	2700K	CRI90	17,4W	

NO DALI VERSION

MAX g String light each profile using a 185W driver.

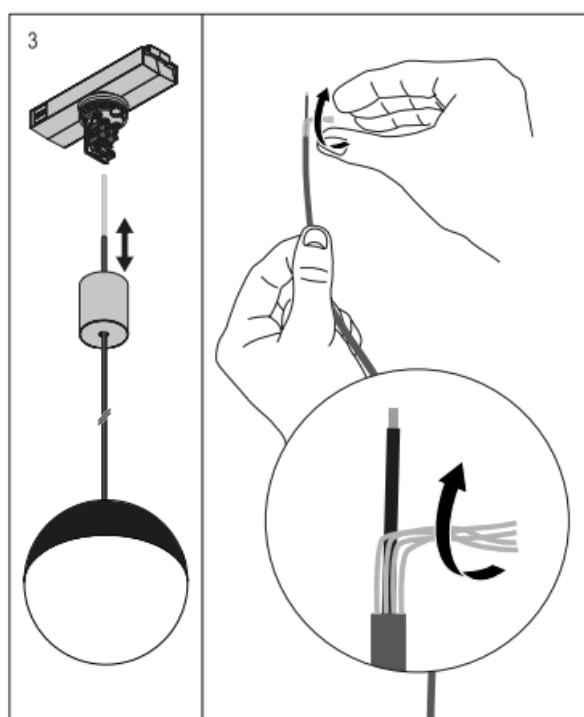
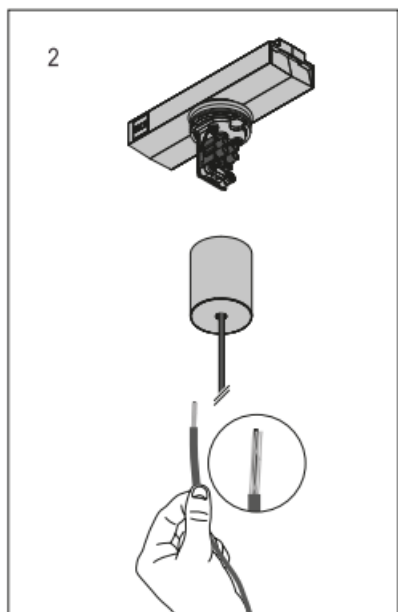
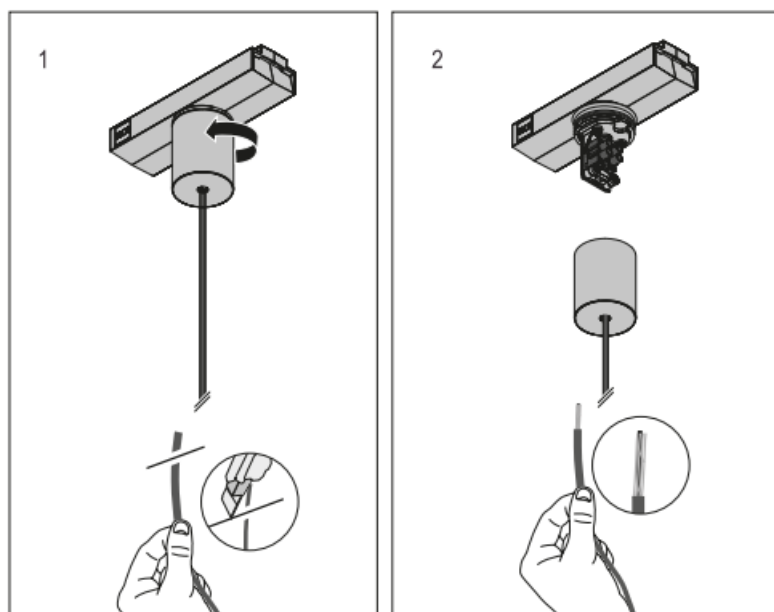
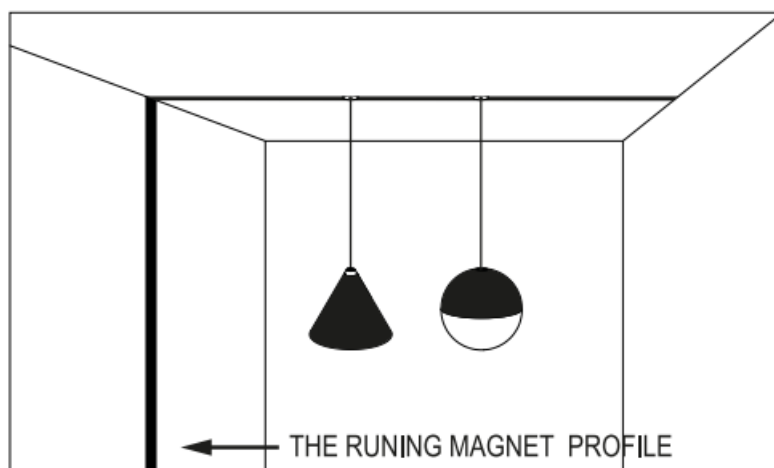
WARNING

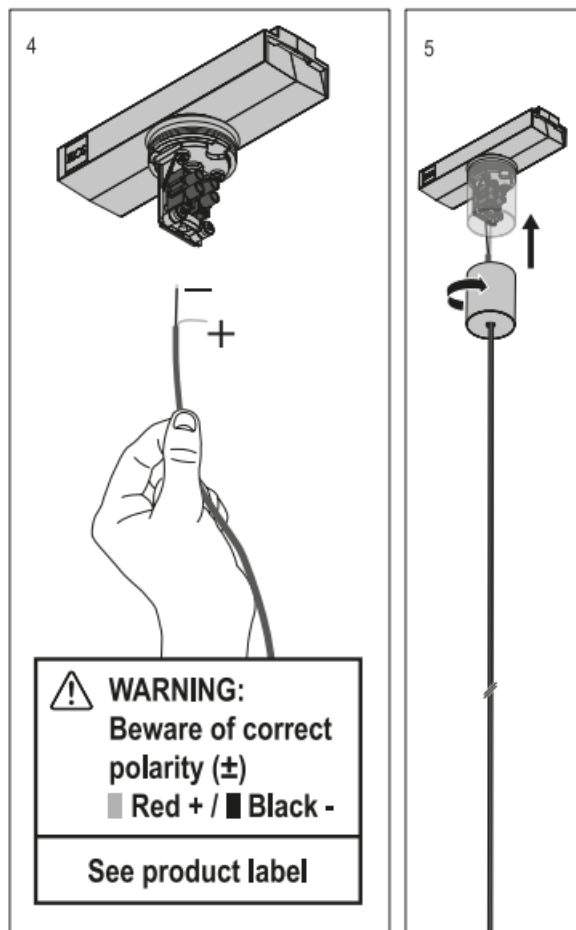
Only use with the electrical supply track system:

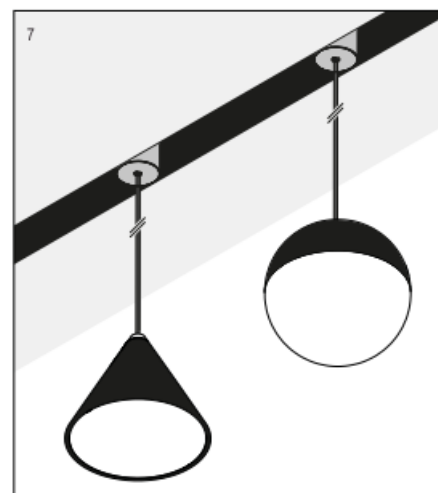
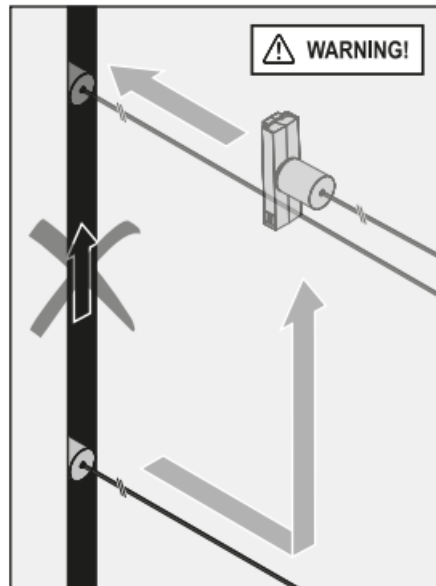
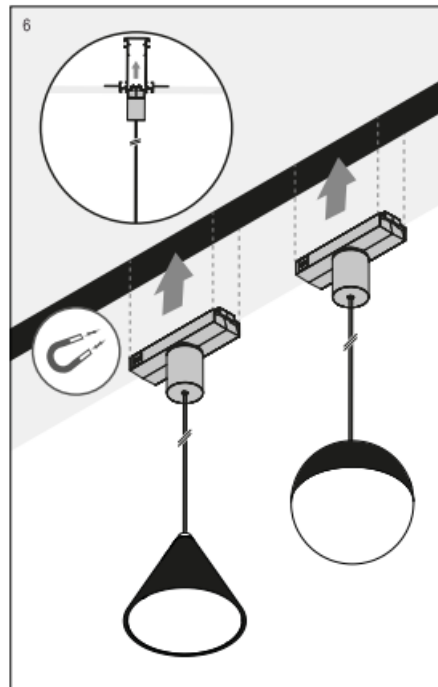
” The Running Magnet System ”

LUMINAIRE INSTALLATION

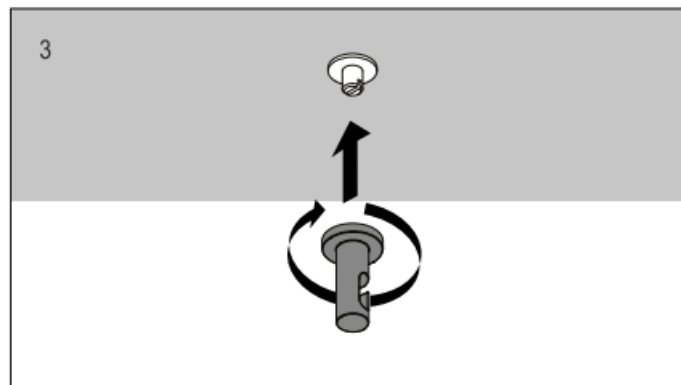
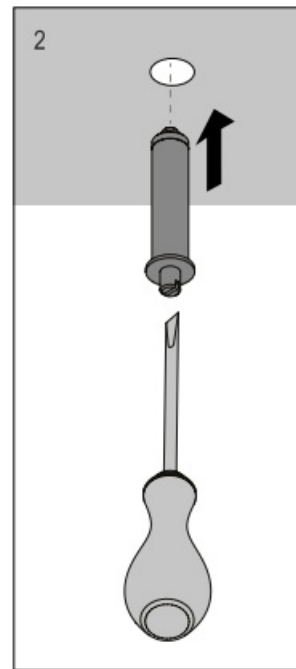
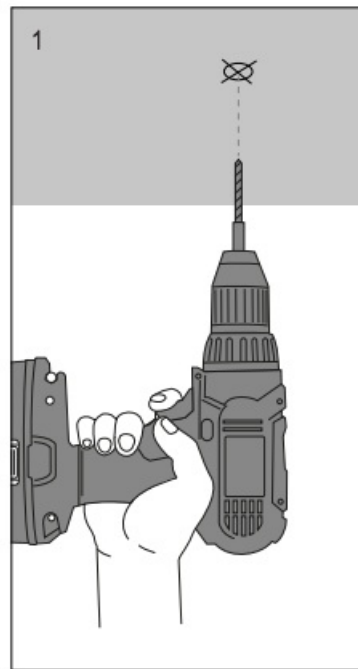
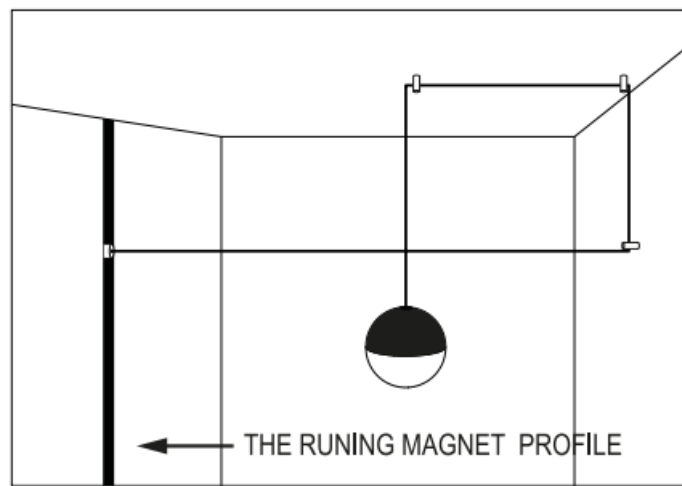
OPTION ONE

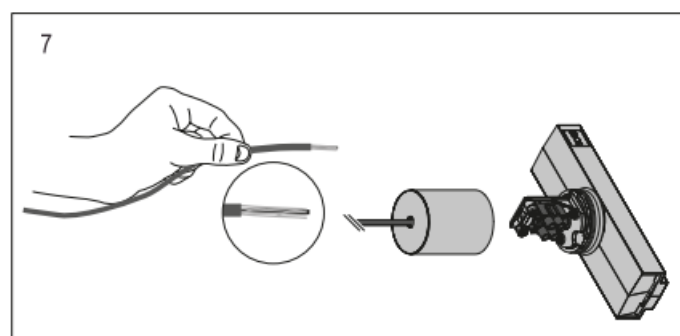
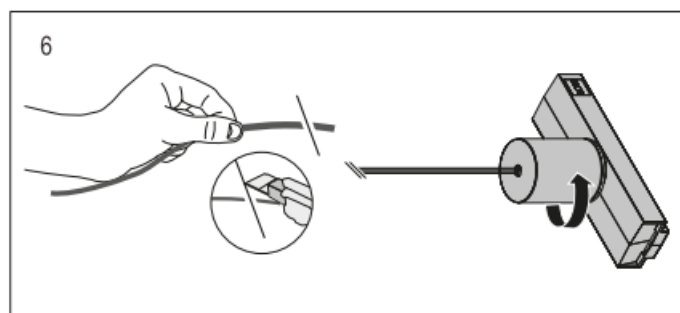
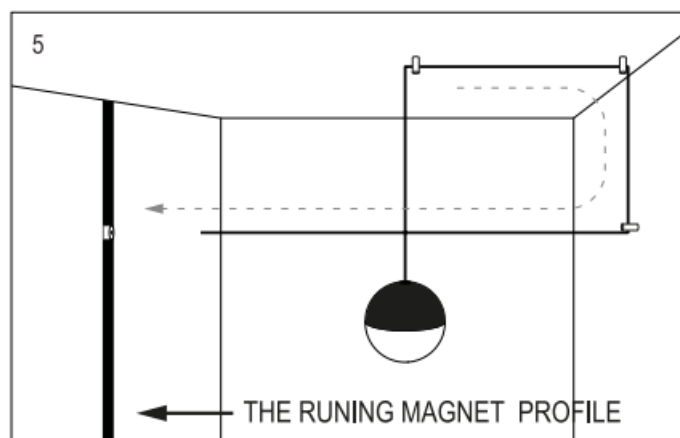
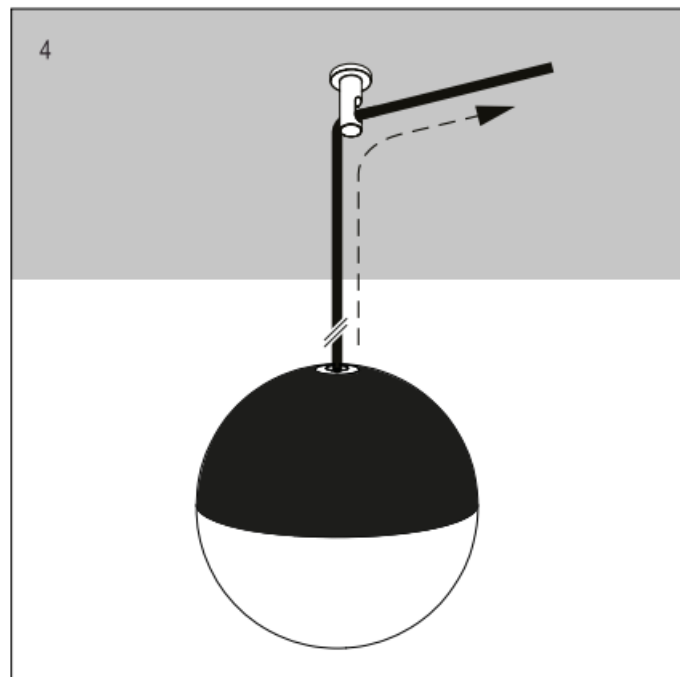




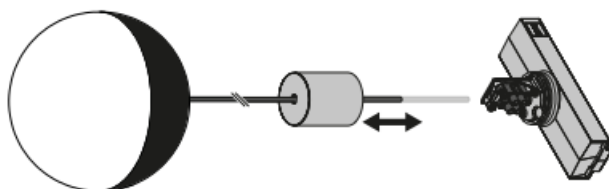


OPTION TWO

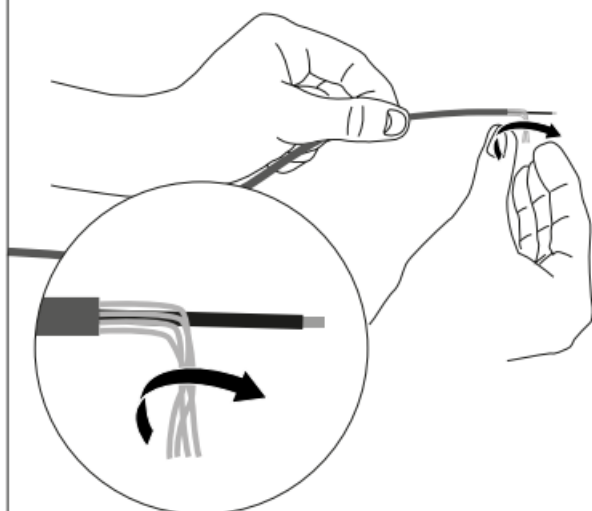




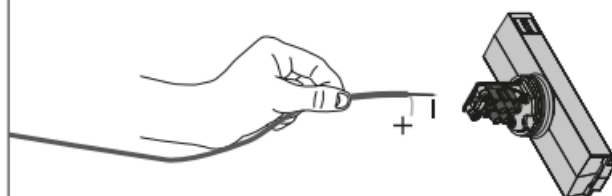
8



9



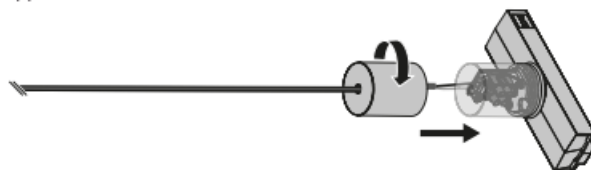
10

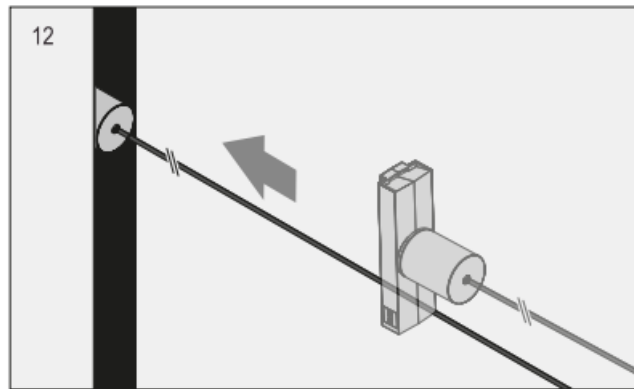


WARNING:
Beware of correct
polarity (\pm)
■ Red + / ■ Black -

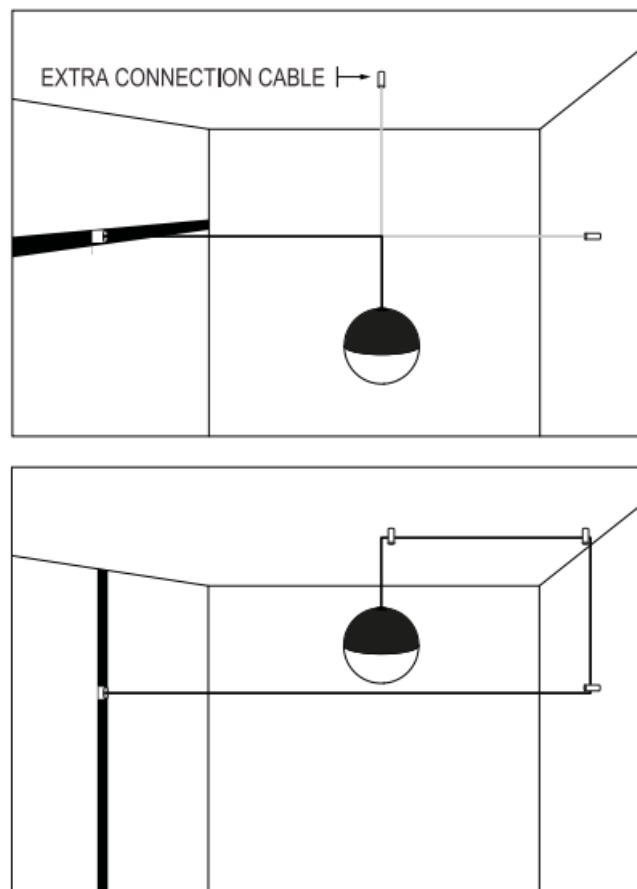
See product label

11





EXAMPLE



CASAMBI VERSION

- -The CASAMBI control will be 1% to 100%
- MAX. 200 luminaires for a single CASAMBI network.
- MAX. 15 meters between luminaires if the environment is an open space (no wall in between luminaires)
- To know more about all CASAMBI options visit www.casambi.com

Documents / Resources

	<p>FLOS 03.6296.14 Running Magnet String Light Module [pdf] Instruction Manual 03.6296.14, Running Magnet String Light Module</p>
--	--

