

FLOODSTOP.
FS34NPT Leak Detection
Automatic Water Shut-off
System



Floodstop FS34NPT Leak Detection Automatic Water Shut-off System User Manual

[Home](#) » [Floodstop](#) » Floodstop FS34NPT Leak Detection Automatic Water Shut-off System User Manual 

Contents

- [1 Floodstop FS34NPT Leak Detection Automatic Water Shut-off System User Manual](#)
- [2 FEATURES](#)
- [3 Installation](#)
- [4 How to Operate Your Control Panel](#)
- [5 Troubleshooting](#)
- [6 1-Year Limited Warranty](#)
- [7 References](#)

FLOODSTOPTM

Floodstop FS34NPT Leak Detection Automatic Water Shut-off System User Manual

This Package Contains



- A (1) Floodstop Motorized Brass Valves (3/4" FIP x 3/4" MIP)
- B (1) Control Panel
- C (1) Leak Sensor with Paper Sleeve
- D (1) AC Adaptor
- E (1) Wire Harness
- F (1) Hook & Loop Mounting Pad
- G (2) Mounting Screws with Anchors
- H (1) Pigtail

Check to make sure everything in the package matches the Contents Listed above. Read the instructions thoroughly before installing or operating the Floodstop system.

Warning: Do not put finger(s) inside Floodstop Valves. Risk of serious injury may occur. Caution: Do not grip the plastic motor drive for leverage when tightening Floodstop Valves.

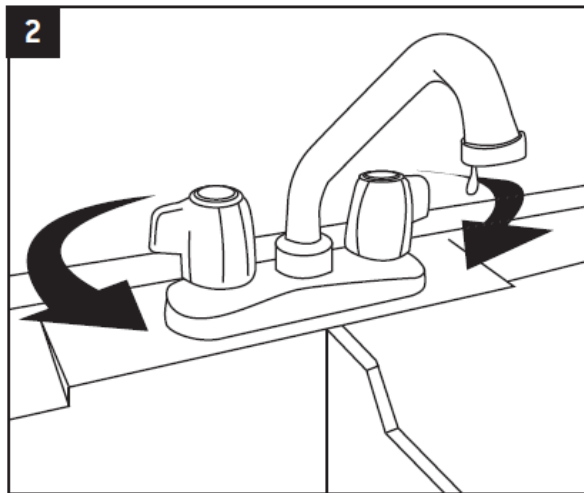
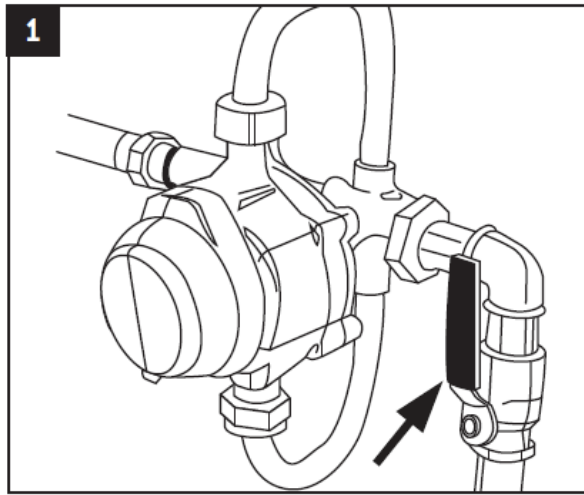
STOP: You may need to purchase additional fittings to install the Floodstop Valve to your existing water line. We recommend that you contact a licensed plumber.

WARNING

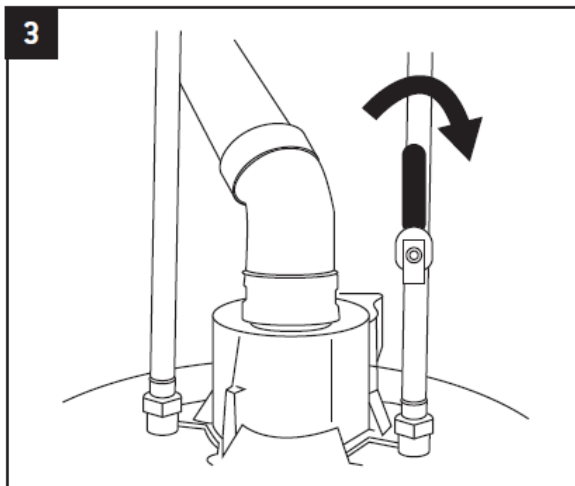
- For use with water only.
- Do not install it on the gas line.

Installation

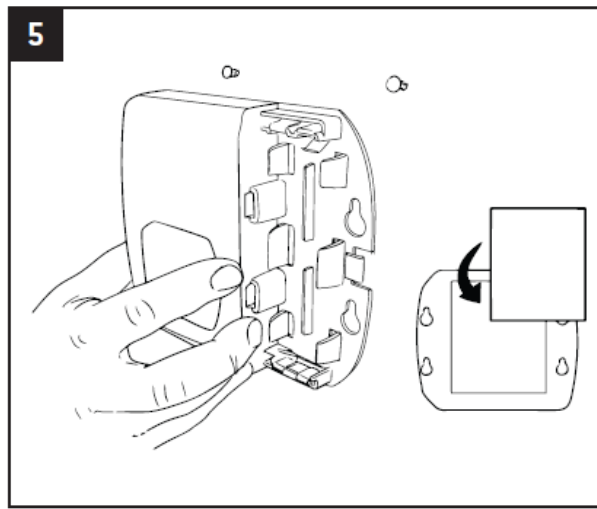
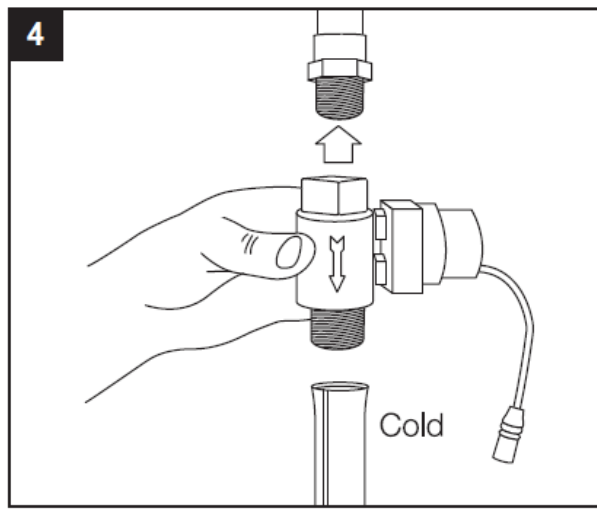
1. Shut off the main water supply valve. Step 4 instructs you to install the Floodstop Valve (3/4" FIP x 3/4" MIP) between the rigid water line coming off the manual cold water valve and the water heater. Most rigid lines will be copper. Evaluate your line and determine which size adapter fitting you will need (the most common one will be 3/4" solder x 3/4" MIP). Then determine what size union you will need between the Floodstop Valve and the water heater. Note that in some cases you can use a flexible or corrugated water heater connector in place of a union.



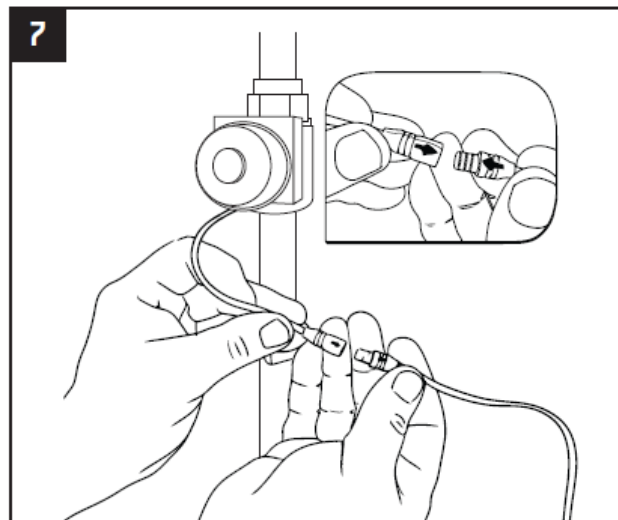
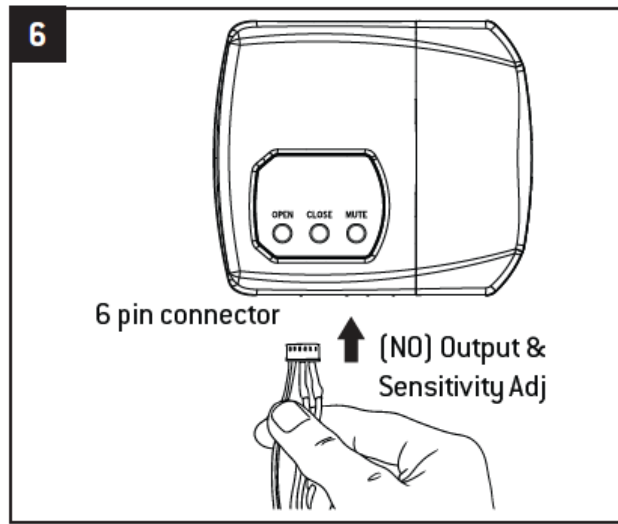
2. Open the faucet nearest the water heater to relieve water pressure.
3. Shut off the manual cold water valve that supplies water to the water heater. Note that the top of the water heater will usually be marked "Cold" or "Inlet" at the point where the cold water line is connected.



4. Position the Floodstop Valve so that the arrow on the side of the valve is pointing to the water heater. Install the Floodstop Valve between the rigid water line coming from the manual cold water valve and the water heater.
NOTE: The Floodstop Valve should be installed within 2 feet of the water heater so that the Leak Sensors can lay flat on the floor.



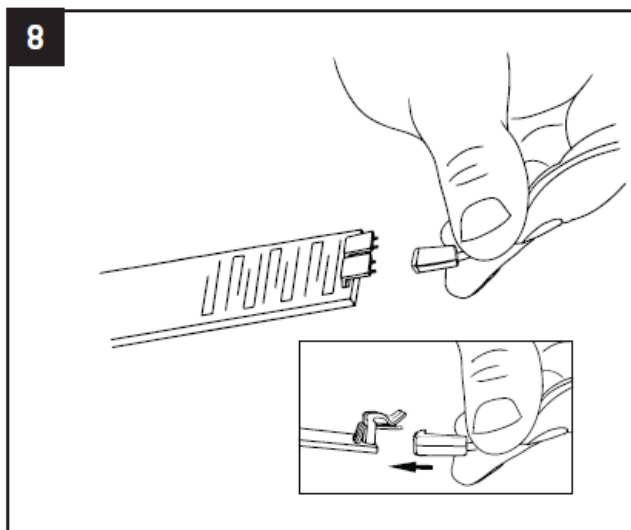
5. Mount the Floodstop Control Panel in an easily accessible location within 30 inches of the Floodstop Valves. You may mount the panel using the screws and anchors, or Hook & Loop Mounting Pad provided. When using the Hook & Loop Mounting Pad, make sure the adhesive is put on a clean, dry surface. NOTE: Depending on the location you pick, and the distance between the hot and cold shut-off valves, you may need to purchase two (2) Floodstop Control Panel to Valve Extension Wires, Model #FSACEXT9 (available where you purchased your Floodstop System).
6. With the contacts of the wire harness connector facing you, plug the 6-pin connector end of the Wire Harness into the bottom of the Control Panel.
7. Take the 2 short wires coming from the Control Panel and connect each one to a Floodstop Valve (make sure the arrows on the side of the plugs line up with each other). It does not matter which wire gets connected to which Floodstop Valve.



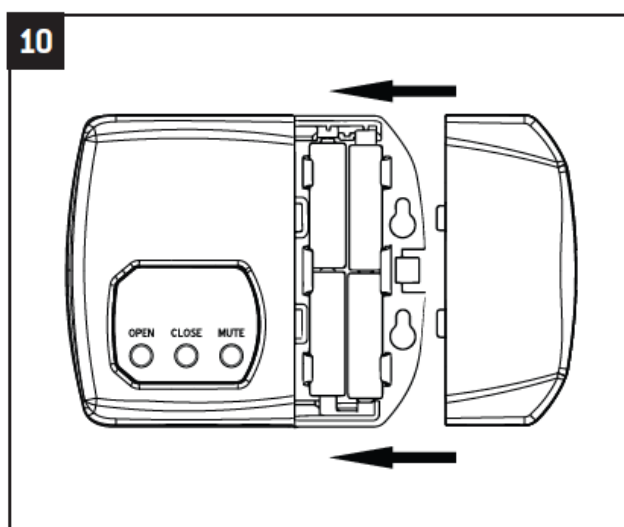
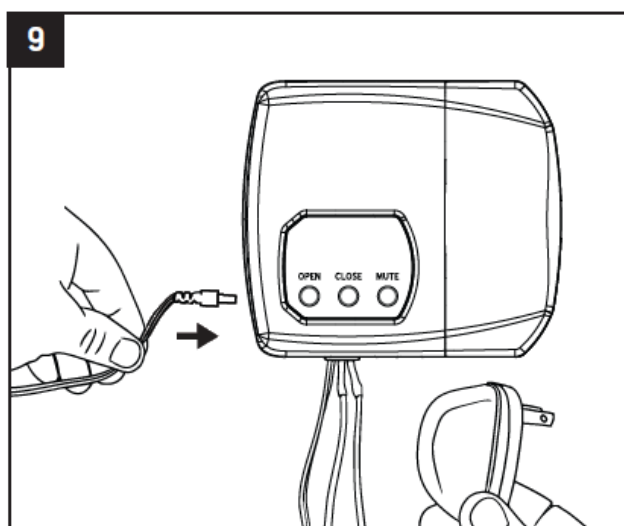
NOTE: The Leak Sensor comes with a Paper Sleeve. If the Leak The sensor is going to make contact with the washing machine, or any other piece of metal, make sure you leave the Paper Sleeve on. If the Leak Sensor makes contact with metal, it will signal the Floodstop Valve to shut off. The Paper Sleeve acts as a barrier between the Leak Sensor and the metal. When the Paper Sleeve becomes wet, it will signal the Floodstop Valve to shut off. If the Leak Sensor will not be contacting metal, you may remove the Paper Sleeve.

8. Connect the plug on the end of the long flat wire coming from the Control Panel to either set of prongs on the Leak Sensor, pushing until the plug snaps in place. Then place the Leak Sensor on the floor behind the washing machine. **NOTE:** Additional Leak Sensors can be connected for added protection. For additional Leak Sensors, purchase a Floodstop Water Leak Sensor, Model #FSAXS01 (available where you purchased your Floodstop System).

CAUTION: Do not place a Leak Sensor or cord in a walkway, or other location that may cause someone to trip and fall.



9. Plug the pin on the end of the AC Adaptor cord into the bottom of the Control Panel, and then plug the AC Adaptor into a wall outlet. Green indicator lights will start to flash, showing you have power. Note that a red low battery indicator light will also flash about every 30 seconds, and the unit will beep once a minute until the batteries are installed.



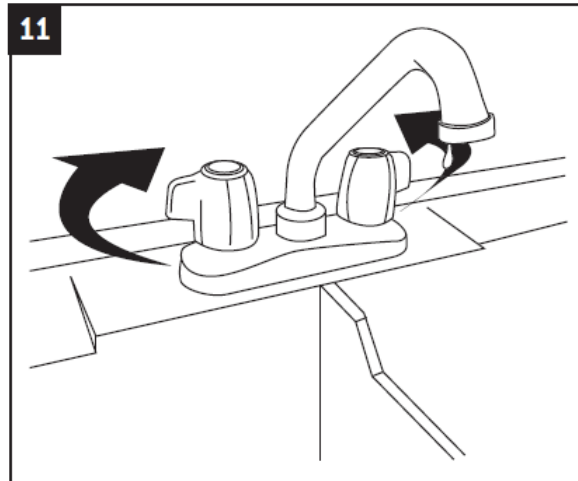
NOTE: If a nearby wall outlet is not available you will need to purchase a thin-voltage Floodstop "AC Adaptor Extension Wire" Model #FSAWAE9 (available where you purchased your Floodstop System). This wire extends

the length of the AC Adaptor cord. **CAUTION:** Do not plug the AC Adaptor into an extension cord.

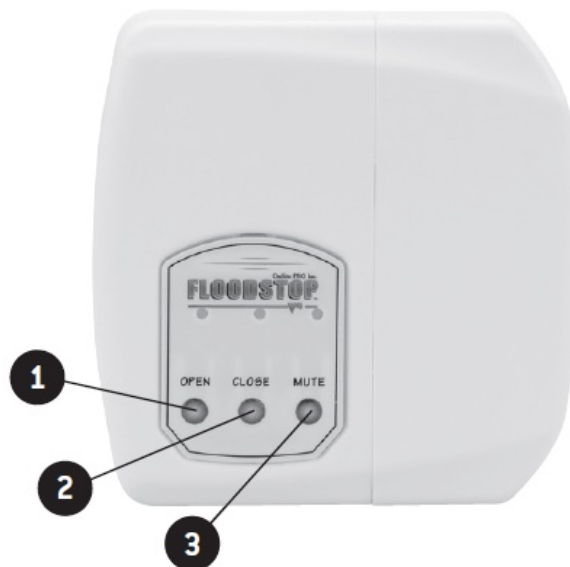
10. Floodstop has a battery backup system that allows the unit to continue working if you have a power outage. To set up the backup system, open the front of the Control Panel and install 4 fresh AA alkaline batteries (batteries not included). The low battery indicator light will now stop flashing and the beep will stop.

CAUTION: Replace batteries once a year or sooner as necessary. If batteries need to be changed sooner, a red low battery indicator light will flash, and a beep will sound.

11. Shut off the previously opened faucet and turn on both valves that were shut off in steps 1 and 3. Check for leaks. Note that the green status light on the Control Panel will indicate whether the Floodstop Valve is open or closed.



How to Operate Your Control Panel



1. The left button opens the Floodstop Valve
2. The middle button closes the Floodstop Valve
3. The right button mutes the audible alarm that sounds when a leak is detected.

Testing Your Floodstop System

1. Push the Open button to make sure Floodstop Valve is open.
 - When the Floodstop Valve is opening or closing, you will hear the valve motor operating for a few

seconds.

2. Saturate a rag with water and squeeze over the Leak Sensor, or dip the Leak Sensor into a small bucket of water.
 - Once the Leak Sensor is wet, it will signal the Floodstop Valve to close, then an audible alarm will sound and a red light will flash.
 - Push the Mute button to silence the alarm. Note that the red light will continue to flash. This means the Floodstop Valve is closed and will remain closed until you push the Open button.
 - Before the Floodstop Valve can be opened, the Leak Sensor needs to be dry. There is no need to unplug the unit when drying off the Leak Sensor.
 - The water test can be done with the paper sleeve still on the Leak Sensor.
 - Note that the paper sleeve is reusable, but once it gets wet you will need to let it air dry flat before placing it back on the Leak Sensor.

Pressure Drop Data

The maximum pressure drop for this device is 2 psi at a flow rate of 5.5 gpm for NPS-3/4 and larger.

Helpful Hints

- If the Leak Sensor Paper Sleeve is misplaced or becomes unusable, a paper towel can be used in its place.
- The Leak Sensor has two sets of prongs so you can connect additional Leak Sensors. You can link them together, so they are positioned at different locations around your laundry area.
- Once a month, the Floodstop Valves will automatically close and open by themselves. The Control Panel is programmed to run this cycle to ensure that the valves continue to function properly if they need to shut off the water.
- Hanging Wires may be tied together using twist ties (Not provided).

Troubleshooting

| Problem | What to Check |
|--|---|
| Status light does not light | <ul style="list-style-type: none"> • Make sure there is power to the outlet. • Unplug the AC Adaptor cord from the Control Panel and plug it back in. • If an AC Adaptor extension wire was used, unplug both ends and reconnect. • Make sure fresh batteries are in the Control Panel. |
| No water comes out of the hot side of the faucet | <ul style="list-style-type: none"> • Push the Open button to make sure the Floodstop Valve is open. |
| The Floodstop Valve does not operate | <ul style="list-style-type: none"> • Make sure both sides of the Sensor are dry. • Make sure there is power to the outlet. • Unplug the AC Adaptor cord from the Control Panel and plug it back in. • Unplug the 6-pin connector from the Control Panel and reconnect. • Locate the plug connection between the Control Panel and the Floodstop Valve that does not operate. Unplug the connection and reconnect, making sure the arrows on the side of the plugs line up. • If an AC Adaptor extension wire was used, unplug both ends and reconnect. • Make sure fresh batteries are in the Control Panel. |
| The alarm goes off for no apparent reason | <ul style="list-style-type: none"> • The Leak Sensor is touching metal, or the concrete is sweating causing high humidity. Correct the problem by placing the Paper Sleeve on the Leak Sensor, or using a paper towel as a barrier. |
| The Floodstop Valve does not operate | <ul style="list-style-type: none"> • Unplug the 6-pin connector from the Control Panel and reconnect. • Locate the plug connection between the Control Panel and the Floodstop Valve that does not operate. Unplug the connection and reconnect, making sure the arrows on the side of the plugs line up. • Push the Close button and wait a few seconds. Then push the Open button. |

Manual Operation of Floodstop Valve

1. Unplug the connection between the Control Panel and the Floodstop Valve.
2. Pull the plastic motor cover off the Floodstop Valve and slide it down the wire until it stops at the plug. Note that no tools are needed to remove the cover.
3. Use a marker and draw a line across the top of the plastic motor housing. This way once the motor is removed you will know how to reposition it for assembly.
4. Remove the 4 screws using a Phillips head screwdriver.
5. Place thumb and finger on the plastic gear and rotate clockwise to open the valve or counterclockwise to close it. Do not use tools to manually open or close the valve.

1-Year Limited Warranty

IPS Corporation warrants the enclosed Floodstop product to be free from defects in materials or workmanship, under normal use and service, for one (1) year from the date of purchase. If at any time during the warranty period, the product is determined to be defective, IPS Corporation shall repair or replace it (at our option). The warranty is limited to defective parts as stated. All costs of removal and installation of the Floodstop product, including the replacement of warranty parts, are the responsibility of the purchaser.

The manufacturer shall not be liable for incidental, consequential, or special damages arising at, or in connection with product use or performance, except as may otherwise be accorded by law. Some states do not allow the exclusion limitation of incidental or consequential damages, so the limitation may not apply to you. Any damage to this Floodstop product as a result of misuse, abuse, neglect, accident, improper installation, or any use violating the instruction manual furnished by us will void this warranty.

This warranty does not cover damages or loss caused by defects, and the owner's use of the Floodstop product confirms the understanding that this product does not constitute an insurance policy, and is only a loss mitigation product used to reduce the risk of water damage. To obtain warranty service, call our Customer Service Department at 1-[800-888-8312](tel:800-888-8312), or e-mail us at tncustserve@ipscorp.com.

Floodstop Water Heater Kit

This equipment has been tested and found to comply with the limits for a Class B digital device, under part 15 of the FCC Rules. These limits are designed to provide reasonable protection against harmful interference in a residential installation. This equipment generates, uses and can radiate radio frequency energy, and if not installed and used by the instructions, may cause harmful interference to radio communications. However, there is no guarantee that interference will not occur in a particular installation.

If this equipment does cause harmful interference to radio or television reception, which can be determined by turning the equipment off and on, the user is encouraged to try to correct the interference by one or more of the following measures:

- Connect the equipment to an outlet on a circuit different from that to which the receiver is connected.
- Consult the dealer or an experienced radio/TV technician for help.

Download PDF: [Floodstop FS34NPT Leak Detection Automatic Water Shut-off System User Manual](#)

References

- [User Manual](#)

[Manuals+](#), [Privacy Policy](#)

This website is an independent publication and is neither affiliated with nor endorsed by any of the trademark owners. The "Bluetooth®" word mark and logos are registered trademarks owned by Bluetooth SIG, Inc. The "Wi-Fi®" word mark and logos are registered trademarks owned by the Wi-Fi Alliance. Any use of these marks on this website does not imply any affiliation with or endorsement.