



flipr analysR Smart Pool Analyser User Guide

[Home](#) » [flipr](#) » flipr analysR Smart Pool Analyser User Guide 

Contents

- [1 flipr analysR Smart Pool Analyser](#)
- [2 Product Usage Instructions](#)
- [3 FAQ](#)
- [4 INTRODUCTION](#)
- [5 Box contents](#)
- [6 FLIPR ANALYSR START-UP](#)
- [7 What you need to know about your Flipr AnalysR](#)
- [8 NOTES ON PROBES](#)
- [9 FLIPR STORAGE](#)
- [10 Dashboard Flipr AnalysR](#)
- [11 ALERT MEANINGS AND QUICK INFO SLIDER DETAILS](#)
- [12 Features to discover](#)
- [13 Flipr ControlIR Dashboard](#)
- [14 How to use Flipr AnalysR](#)
- [15 FCC Statement](#)
- [16 How to contact us](#)
- [17 Documents / Resources](#)
 - [17.1 References](#)
- [18 Related Posts](#)



flipr analysR Smart Pool Analyser



Specifications

- **Product Name:** Flipr AnalysR
- Contents in the Box:
 1. Flipr AnalysR
 2. Protective cap
 3. 2x pH buffer bottles
 4. 1 Testing strip
 5. Wifi Gateway
 6. Flipr case (for device storage)

Product Usage Instructions

Flipr AnalysR Start-Up

- Flipr AnalysR installation takes a few minutes. Ensure Bluetooth is on, the phone is connected to the network or Wi-Fi, and geolocation is enabled. Stay close to the device and pool during installation.

Equipment

- Follow the application's instructions for setup. Wifi Gateway requires a 2.4 GHz connection.

Probe Calibration

- Ensure reliable measurements by calibrating the probes. Follow the application's prompts for calibration steps.

What You Need to Know

- Flipr AnalysR must remain in the water to prevent probe damage.
- Do not keep Flipr AnalysR in water that is too cold or warm.
- Regular calibration is recommended once a year at the start of the season.

FAQ

Q: How often should I calibrate Flipr AnalysR?

A: It is recommended to calibrate the device once a year at the beginning of the season. If you use your pool for more than 6 months a year, calibrate it twice a year.

INTRODUCTION

Swimming in happiness starts here

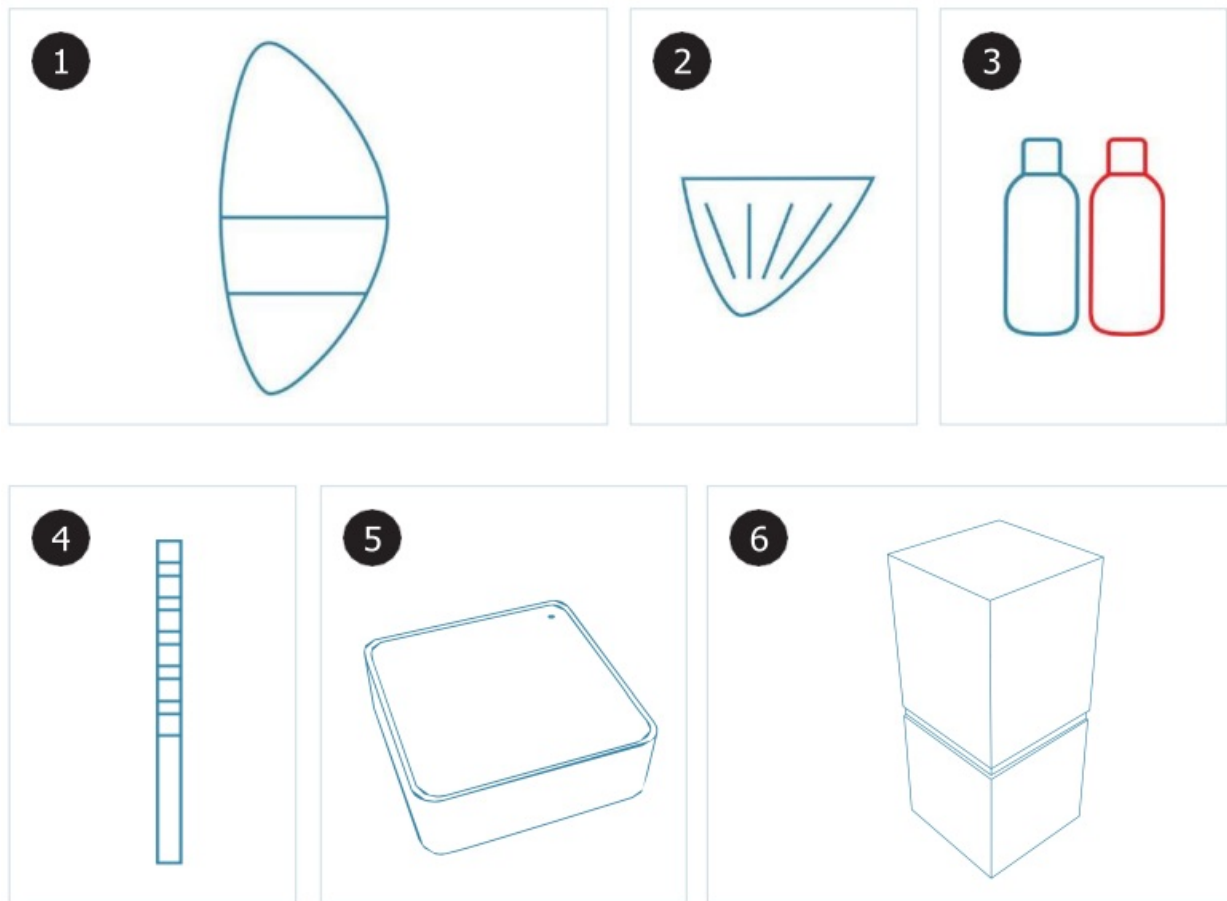
- In a few moments, Flipr AnalysR will be swimming in your pool or spa. We're delighted to count you among our users.
- At Flipr, we believe that pool maintenance should be as simple as possible. We're working hard to pursue this ambition.
- Flipr AnalysR is the first step towards this dream. We hope you enjoy it as much as we enjoyed designing it.
- We've written this manual to help you discover the main features of Flipr AnalysR and understand how it works.

We are looking forward to swimming with you

- **PS:** If you have any questions, please don't hesitate to contact our support team: we'll do our best to get back to you as soon as possible.

Box contents

1. Flipr AnalysR
2. Protective cap
3. 2x pH buffer bottles
4. 1 Testing strip
5. Wifi Gateway
6. Flip case (to be kept for device storage)



FLIPR ANALYSR START-UP

- Flipr AnalysR takes just a few minutes to install. Before you start, make sure that Bluetooth is activated on your phone AND that your phone is correctly connected to the cellular network or Wi-Fi.
- Also, check that geolocation is enabled on your smartphone. You'll need to stay close to the device and the pool throughout the installation phase.

1. Setting up Flipr AnalysR

- The first thing to do: is download the application from the Apple AppStore or Google PlayStore.



- Create a user account, and let yourself be guided: everything is mentioned in the application.
- There's no need to set up the Bluetooth connection: it's done automatically when the device is configured.



- After creating your account, the application will ask you to create your pool or Spa profile. Click on “Add Place” and follow the instructions.

2. Add equipment

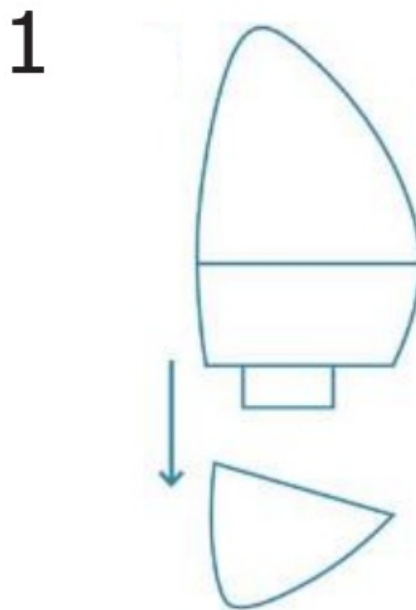
- Now follow the instructions to configure your device. Make sure your phone's Bluetooth is activated, then click on the “AnalysR” button.
- Follow the application's instructions. The Wifi Gateway requires a 2.4 GHz Wifi.

3. Probe Calibration

- This ensures reliable measurements. In some cases, the application may skip this step, in whole or in part. In this case, the device will judge that calibration is not necessary and that it should be carried out at a later date (the application will alert you).
- Calibration takes place in 2 stages. Follow the instructions below, ONLY when prompted by the application:

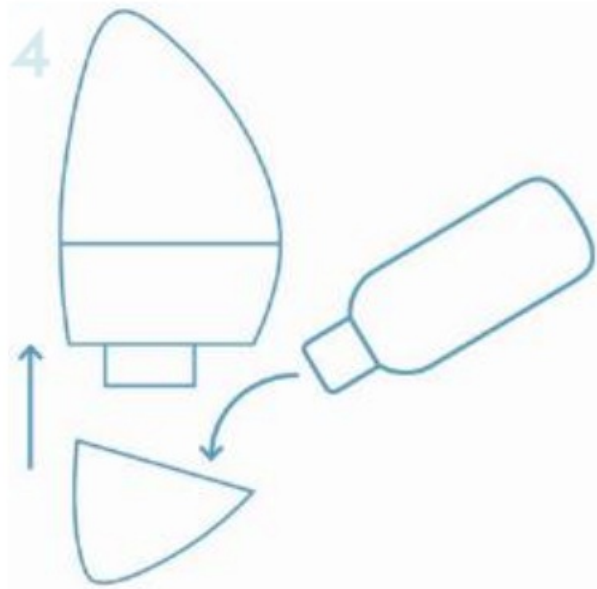
1. Unscrew the lower part of the unit.

ATTENTION: a liquid(1) is present inside the cover. This liquid is used to transport and store the probes. This liquid can be disposed of.



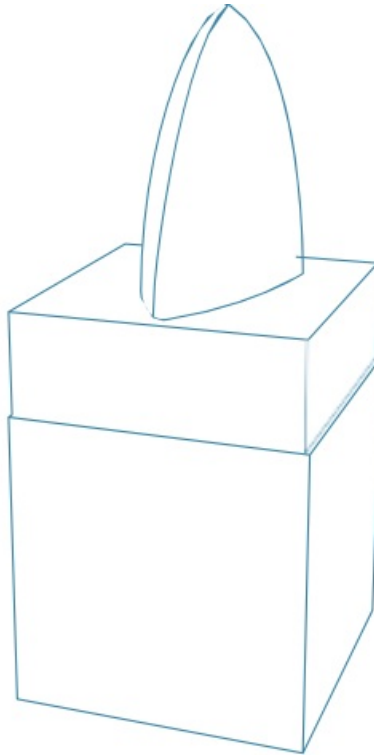
2. Pour the bottle (2) into the cover as indicated by the application.

2



3. Screw the cover back on, position the device vertically, then click on the “Initialize” button in the application.

3



◦ **Suite – Calibrage des sondes**

4. Once you’ve completed the first step, unscrew the bottom part and store the liquid in a clean container. When prompted by the application, do the same with the second bottle.
5. When the calibration operation is complete, you can discard the 2 liquids.

4. Using the test strip

- When prompted by the application, perform the strip test, holding the strip so that the colors face upwards.



5. Further configuration and launch

- The application will then prompt you to continue with the setup.
- Follow the on-screen instructions carefully. Place Flipr AnalysR in water **ONLY** when prompted.

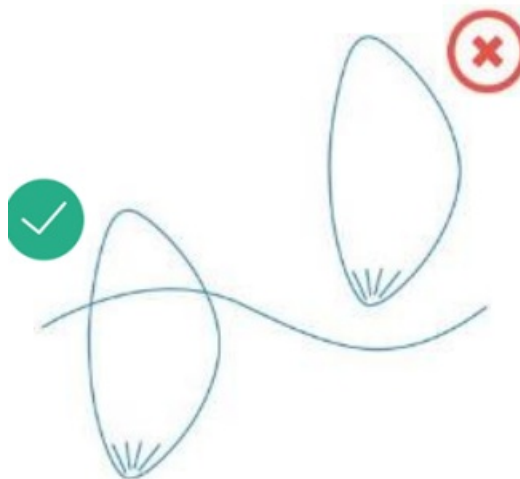
6. To connect Flipr AnalysR

- **Last step:** we now invite you to configure the remote connection using the Wifi connection box. Follow the on-screen instructions.
 1. Preservative KCL2M (potassium chloride).
 2. Liquids are pH4 and pH7 calibration solutions.
- **DO NOT INGEST** If swallowed, contact a doctor or Poison Control Center immediately.

What you need to know about your Flipr AnalysR

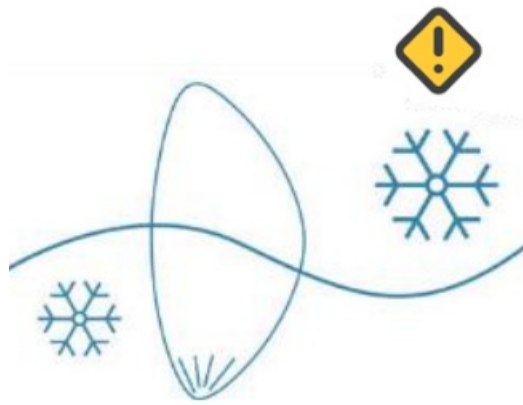
- **Flipr AnalysR must remain in the water**

- Away from water, the probes dry out and deteriorate very quickly, rendering the device unusable.



- **Flipr AnalysR must not be kept in water that is too cold or too warm**

- It is imperative to remove the unit from your pool if the water temperature is below 5°C or above 50°C. In this case, store your unit according to our recommendations.



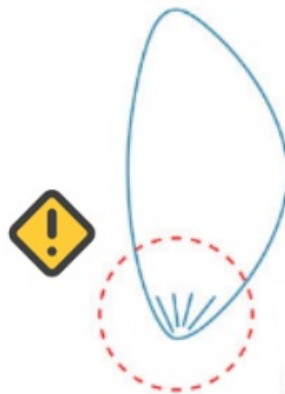
- **Regular calibration**

- To extend sensor life, we recommend calibrating the device once a year at the start of the season (twice a year if you use your pool for more than 6 months of the year).



- **Beware of shocks**

- Flipr AnalysR is a robust device designed to swim alongside you. However, beware of violent blows that could damage the probes.



- **Do not disassemble**

- Any technical intervention on the device must be approved by technical support. Any technical intervention without the approval of technical support will result in a breach of warranty.



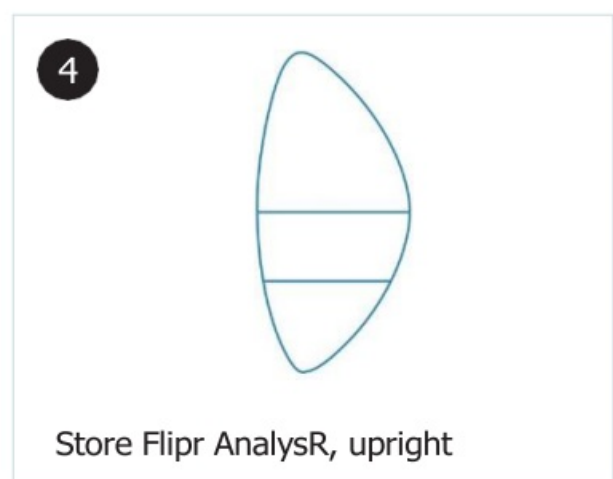
NOTES ON PROBES

- Flipr AnalysR is a measuring device that uses Redox, pH, and temperature probes. These probes are not suitable for certain uses, such as water analysis not recommended by Flipr, nor for pools affected by leakage current.
- When used correctly, the device is guaranteed for a tolerance threshold of $\pm 1.5^\circ$, ± 0.2 pH, ± 100 mv RX. Below this threshold, the warranty is void committed.
- As a user, we invite you to read the warranty leaflet included in the device packaging (usually under the cushioning).
- We would also like to draw your attention to the fact that over-concentration of stabilizer in a pond can interfere with the redox reading, and thus distort the information provided by the device.
- You should also be aware that over-concentration of stabilizer can impair the effectiveness of chlorine in the water.

FLIPR STORAGE

You may need to take Flipr out of the air during or on your pool or during a cold spell.

In this case, follow the instructions below:



Dashboard Flipr AnalysR

This is the application's home screen. It lets you monitor the status of your pool at a glance.



ALERT MEANINGS AND QUICK INFO SLIDER DETAILS



Risk of ice formation



Flipr out of the water



High water temperature



Algae / Green water risks



TAC, hardness or stabilizer



Winterization recommended



Pool restart recommended



Hub / ControlR state



Probabilité dans les 5h
20%



30km/h



Lun
25-30°



Mar
26-30°



Mer
23-28°



Jeu
22-28°

Weather forecast

Taux de pH sur les 7 derniers jours



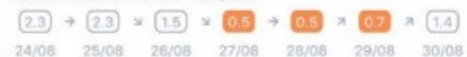
Evolution of pH levels

Température de l'eau sur les 7 derniers jours



Temperature trend

Taux de Redox sur les 7 derniers jours



Redox evolution

♥ Tout est parfait, bravo !

No action required

👁️ Vigilance en cours

Flipr AnalysR is monitoring the situation and may alert you soon.

⚠️ Alerte en cours : suivez nos conseils

Flipr AnalysR asks you to act

👍 Correction de l'eau en cours

Following your action, Flipr AnalysR is waiting to see how the situation develops.

⚠️ Mesure ancienne [En savoir plus](#)

Flipr AnalysR has not received any measurements recently. Follow the instructions on the screen

Features to discover



FLIPR PREDICT

Track variations in water temperature, pH, and redox over the last 30 days.

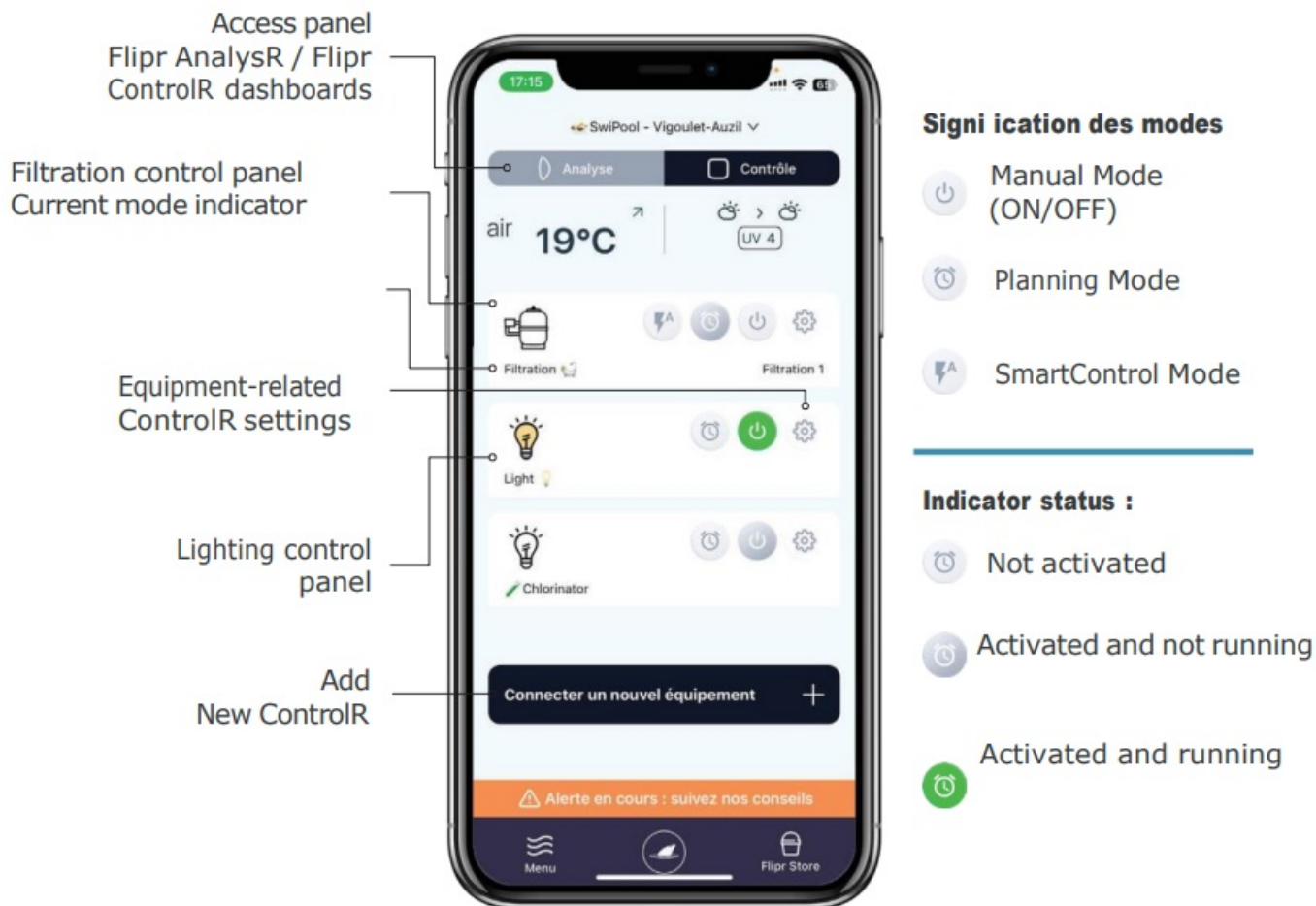


MAINTENANCE LOG

A true historical record, the maintenance log contains all the alerts received and allows you to indicate all the events affecting your pool.

Flipr ControlR Dashboard

Connect Flipr ControlR to Flipr AnalysR and enjoy enhanced functionalities on the dedicated dashboard.



Find out more by scanning the QR code!



How to use Flipr AnalysR

Flipr AnalysR is very simple to use: just leave it in the water. In the event of poor analyses, the application will alert you and tell you what to do. Here are the main questions about using Flipr AnalysR.



1. I've just put Flipr AnalysR in water, and the measurements seem to be wrong!
 - Don't panic! Flipr AnalysR needs a few hours in your pond to display correct measurements. If you still don't see the correct readings 12 hours after launching, please contact our customer support team.
2. **The Flipr app shows me alerts, but I don't have the dosages displayed!**
 - Flipr AnalysR needs to know which products you're using to give you the right dosages. To do this, go to Menu / Pool House / Products, and register the products you use by scanning the barcode on your maintenance product packaging.
3. **pH or disinfectant is wrong, but the Flipr app doesn't alert me!**
 - Flipr AnalysR takes measurements several times a day. Water quality alerts, on the other hand, are sent a maximum of 2 times a day, in the morning and/ or evening, and only if the condition of the water requires it.
 - So keep in mind that Flipr AnalysR will only alert you if the water has a defect AND only if it's necessary.
 - For example, you may have a high pH level, or a low chlorine level, without the Flipr application triggering any alerts or advice.
 - This is normal: the application either considers that these poor values are temporary and do not reflect the quality of the water, or that they can resolve themselves naturally.
4. **I'm noticing measurement differences between Flipr AnalysR and another analysis system**
 - Flipr AnalysR uses probes made by one of the world's leading manufacturers. These probes are renowned for their quality and are regularly used in public swimming pools. They are therefore particularly reliable.
 - If you observe any discrepancies, please ensure that the other control method complies with the following points.
 - Measurement times are the same with Flipr AnalysR.
 - The measurement location is the same as with Flipr AnalysR.
 - Your other probe was recalibrated less than 6 months ago OR the expiration date of your analysis kit has not been reached.
 - If the difference observed concerns chlorine, Flipr AnalysR measures active chlorine.
 - Make sure that the other measurement tool is analyzing the same parameter.
 - You can find more information on this subject on our website and from our teams.

Any other questions?

Check out our frequently asked questions about using Flipr AnalysR by scanning the QR code!



FCC Statement

This device complies with part 15 of the FCC Rules. Operation is subject to the following two conditions:

1. This device may not cause harmful interference,

2. this device must accept any interference received, including interference that may cause undesired operation.

Caution: Any changes or modifications to this device not explicitly approved by the manufacturer could void your authority to operate this equipment.

This equipment has been tested and found to comply with the limits for a Class B digital device, according to part 15 of the FCC Rules. These limits are designed to provide reasonable protection against harmful interference in a residential installation. This equipment generates, uses, and can radiate radio frequency energy and, if not installed and used under the instructions, may cause harmful interference to radio communications. However, there is no guarantee that interference will not occur in a particular installation. If this equipment does cause harmful interference to radio or television reception, which can be determined by turning the equipment off and on, the user is encouraged to try to correct the interference by one or more of the following measures:

- Reorient or relocate the receiving antenna.
- Increase the separation between the equipment and the receiver.
- Connect the equipment to an outlet on a circuit different from that to which the receiver is connected
- Consult the dealer or an experienced radio/TV technician for help.

RF Exposure Information This equipment complies with FCC radiation exposure limits set forth for an uncontrolled environment. This equipment should be installed and operated with a minimum distance of 20cm between the radiator and your body.

How to contact us

- Have a question or concern
- Access all our solutions, FAQs, and user manuals.



- Can't find your answer
- Want to share feedback
- Contact our team.



Documents / Resources



[flipr analysR Smart Pool Analyser](#) [pdf] User Guide

2BH4E-ANALYSR, 2BH4EANALYSR, analysR Smart Pool Analyser, analysR, Smart Pool Analyser, Pool Analyser, Analyser

References

- [📄 Flipr, The Leading Smart Pool Analyser](#)
- [User Manual](#)

[Manuals+](#), [Privacy Policy](#)

This website is an independent publication and is neither affiliated with nor endorsed by any of the trademark owners. The "Bluetooth®" word mark and logos are registered trademarks owned by Bluetooth SIG, Inc. The "Wi-Fi®" word mark and logos are registered trademarks owned by the Wi-Fi Alliance. Any use of these marks on this website does not imply any affiliation with or endorsement.