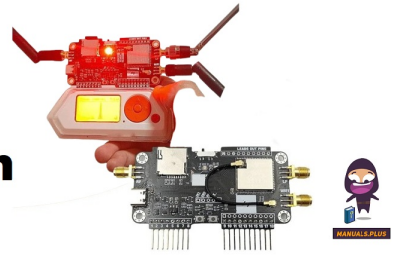


Flipper V1.4 Function Switch



Flipper V1.4 Function Switch User Manual

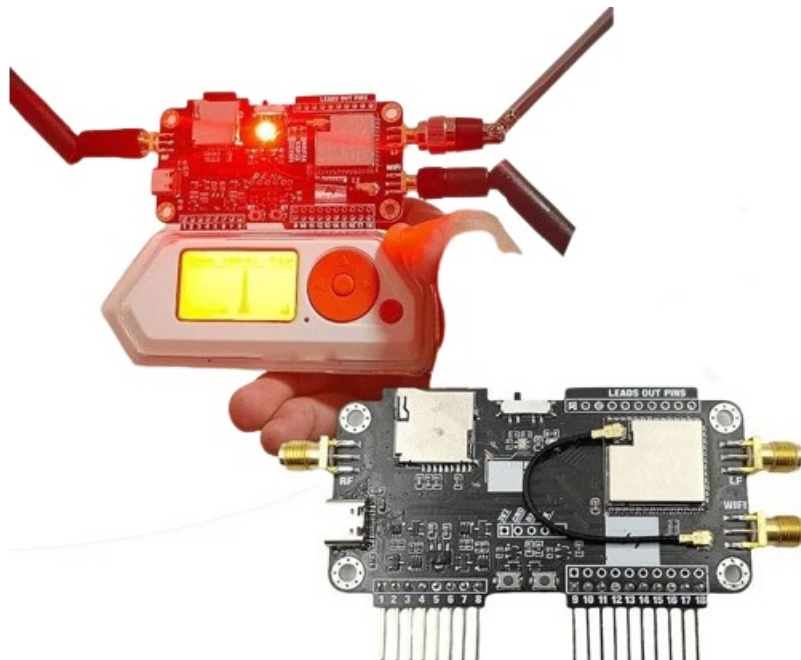
[Home](#) » [FLIPPER](#) » Flipper V1.4 Function Switch User Manual 

Contents

- [1 Flipper V1.4 Function Switch](#)
- [2 Specifications](#)
- [3 Product Usage Instructions](#)
- [4 FAQs](#)
- [5 Documents / Resources](#)
 - [5.1 References](#)

Flipper

Flipper V1.4 Function Switch

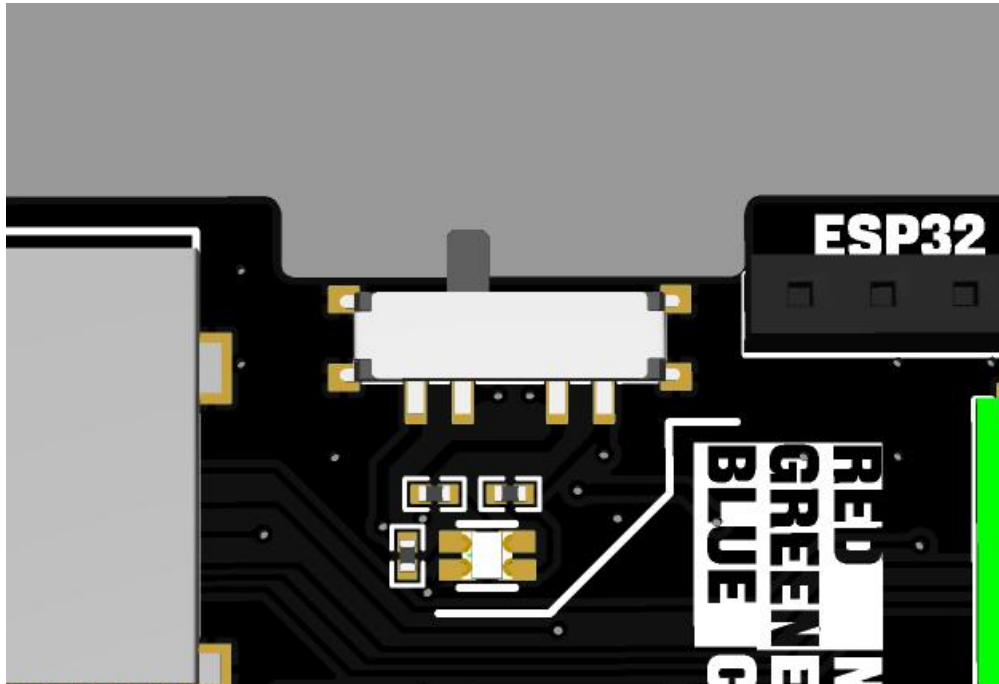


Specifications

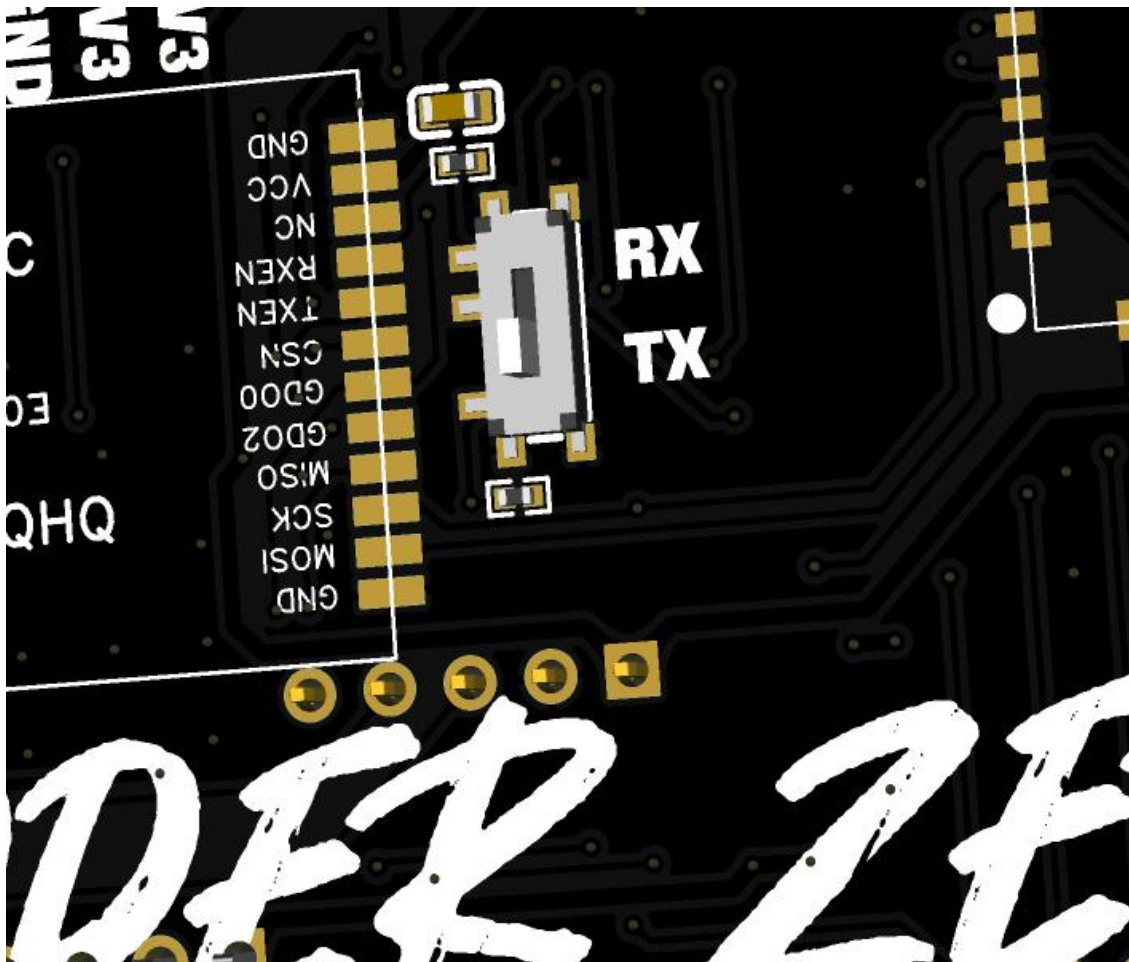
- **Model:** AIO_V1.4
- **Module Functions:** 2.4Ghz transceiver, WIFI, CC1101
- **WIFI Module:** ESP32-S2
- **Interface:** TYPE-C

Product Usage Instructions

Function Switch



- There is a function switch button on the top of the PCB, which can be used to switch between the three module functions by toggling the switch.
- The LED below the switch is used to indicate the current function: the red light indicates that it is currently a 2.4Ghz transceiver module, the green light indicates that it is currently a WIFI module, and the blue light indicates that it is currently a CC1101 module.

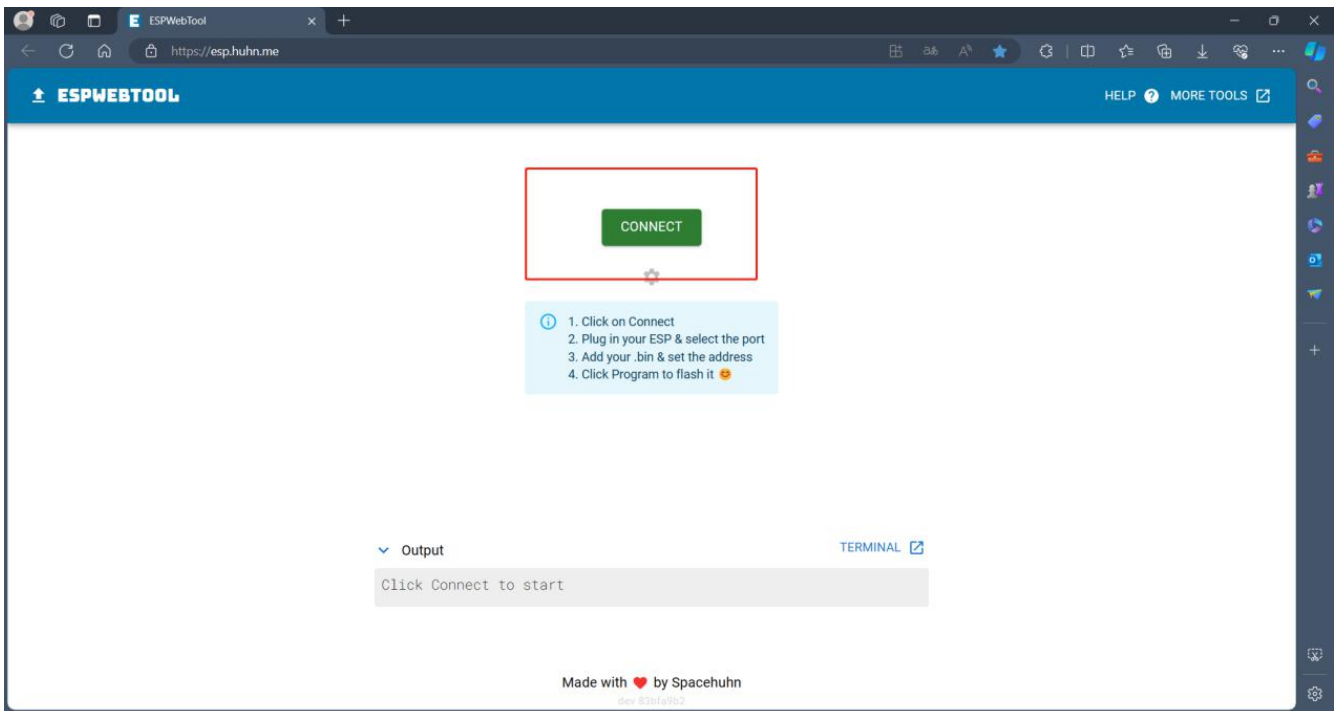


- The switch on the back of the PCB is used to turn on the built-in gain circuit of the CC1101 module. When the switch is in the RX position, the receiving function of the CC1101 module is gain, and when the switch is in the TX position, the transmitting function of the module is gain.
- When the switch is in the RX position, the module can also perform the receiving function, but the TX function does not receive the gain amplification.
- Do not directly plug or unplug the module when powered on, as this may damage the power supply function.

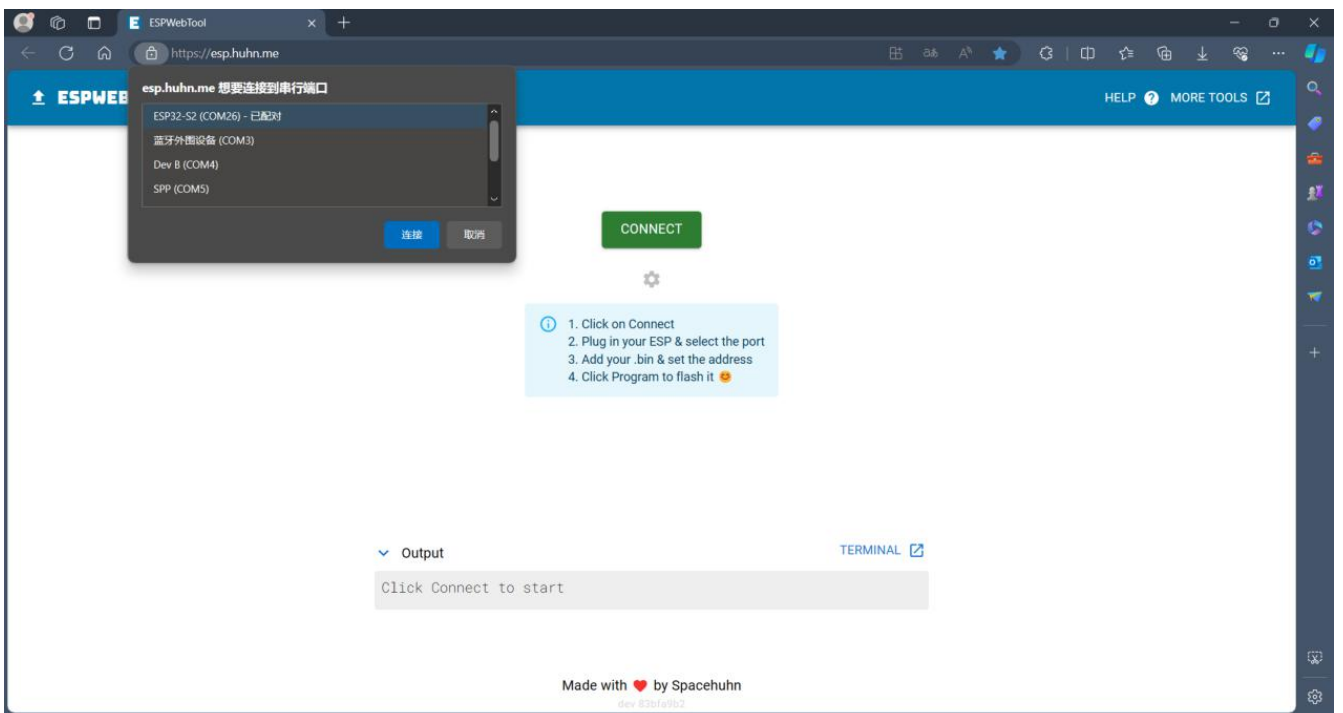
ESP32 program burning

The WIFI module selected on the PCB is ESP32-S2. When downloading the program, you can refer to the burning process of the Flipper Zero official WIFI board.

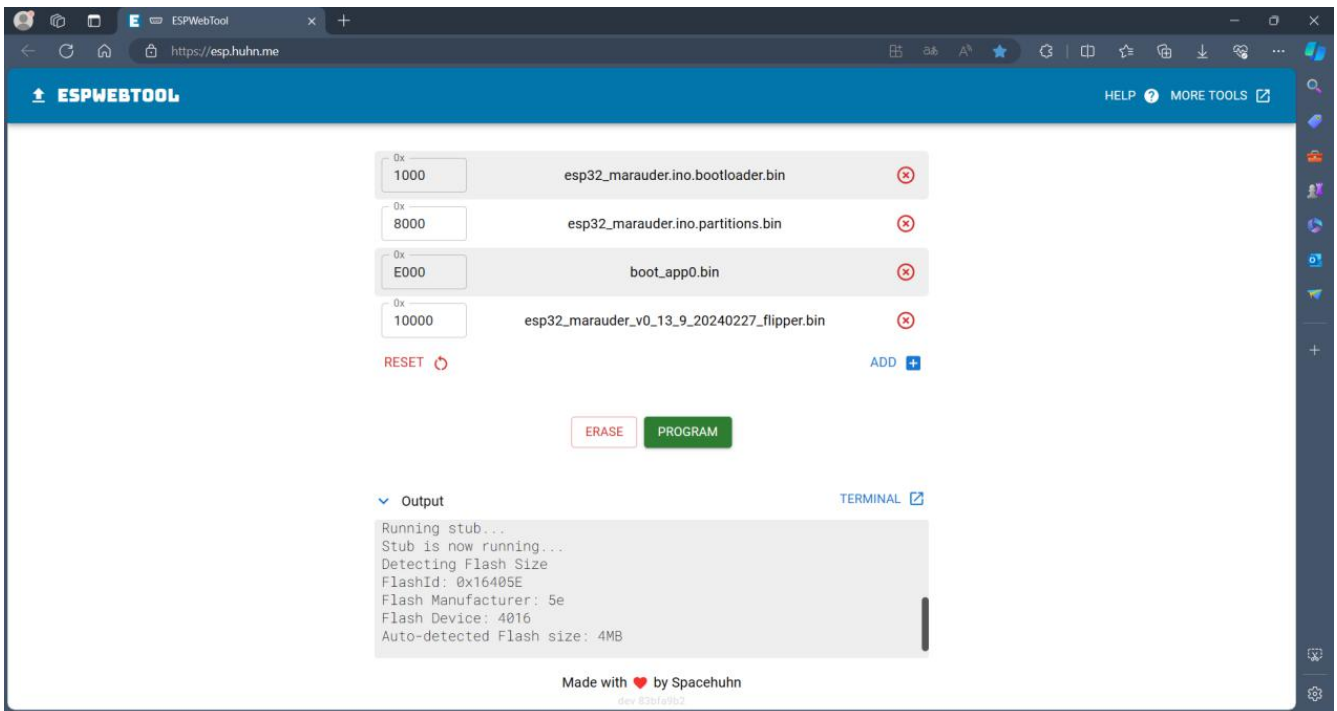
1. Open the following URL through the browser: ESPWebTool (Huhn.me) (Use Edge browser)
2. Turn the toggle switch on the top of the front of the PCB board to the middle gear.
3. Press and hold the boot button on the bottom of the front of the PCB (the button is printed with BT), and connect the TYPE-C interface on the PCB to the computer interface through the USB cable. Currently, the LED color on the front of the PCB should be green.
4. Click the CONNECT button on the web page



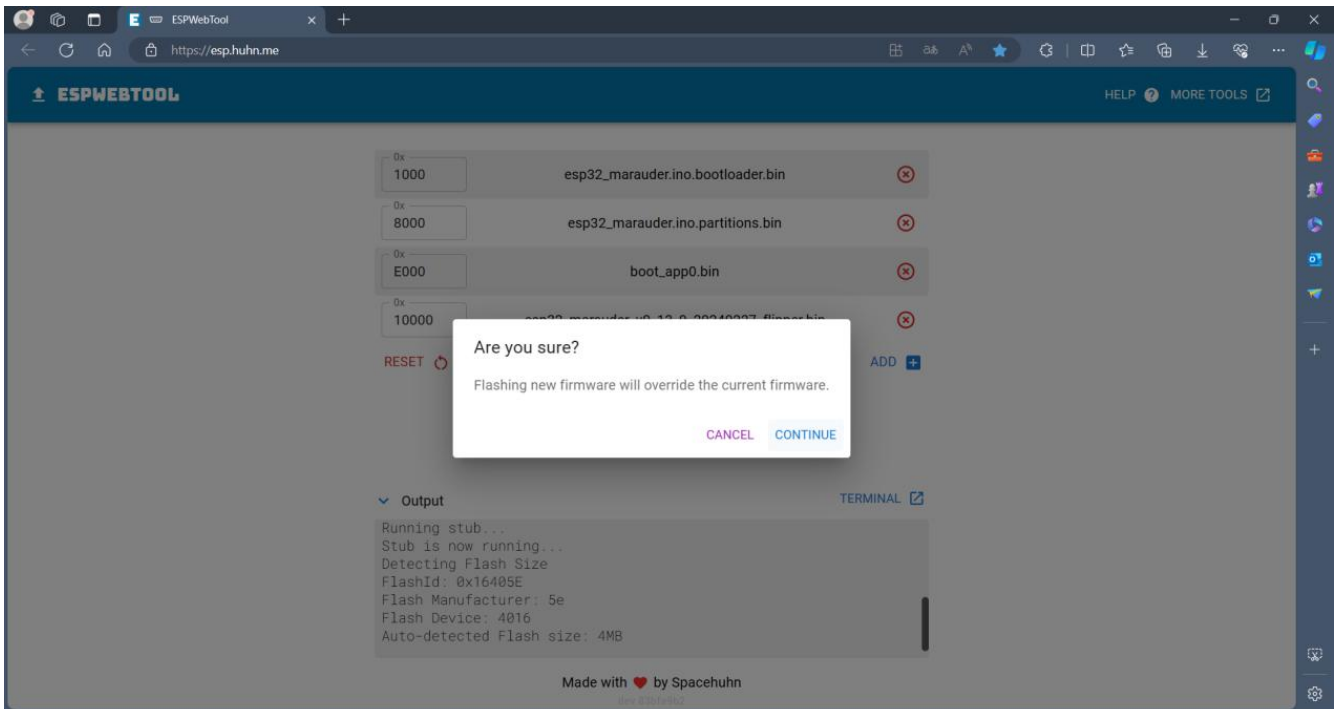
5. Select the esp32-s2 chip in the prompt window in the upper left corner



6. Click the picture below to add the downloaded file to the corresponding address



- Click the PROGRAM button to start downloading. After clicking, a window pops up. Click CONTINUE to continue



- When the download progress reaches 100%, it prompts that the download is complete. If the download progress is disconnected in the middle and an ERROR message is prompted, check whether the module welding and the USB interface are connected to the computer firmly. After the inspection is completed, reconnect to the computer for burning.



FAQs

- **Q: What do the different LED colors indicate?**
 - **A:** A red light indicates a 2.4Ghz transceiver, a green light indicates the WIFI module and a blue light indicates the CC1101 module.
- **Q: How do I know if the program download is successful?**
 - **A:** A completion message will be displayed when the download progress reaches 100%. If an ERROR message appears, check connections and retry.

Documents / Resources

	<p>Flipper V1.4 Function Switch [pdf] User Manual V1.4 Function Switch, V1.4, Function Switch, Switch</p>
--	---

References

- [huhn.me](#)
- [User Manual](#)

[Manuals+](#), [Privacy Policy](#)

This website is an independent publication and is neither affiliated with nor endorsed by any of the trademark owners. The "Bluetooth®" word mark and logos are registered trademarks owned by Bluetooth SIG, Inc. The "Wi-Fi®" word mark and logos are registered trademarks owned by the Wi-Fi Alliance. Any use of these marks on this website does not imply any affiliation with or endorsement.