

Flextool FDU-P3 Petrol Drive Unit



Flextool FDU-P3 Petrol Drive Unit Instruction Manual

[Home](#) » [Flextool](#) » Flextool FDU-P3 Petrol Drive Unit Instruction Manual 

Contents

- [1 Flextool FDU-P3 Petrol Drive Unit](#)
- [2 Product Information](#)
- [3 Product Usage Instructions](#)
- [4 SPARE PARTS](#)
- [5 Assembly/Service Kits](#)
- [6 DISCLAIMER](#)
- [7 Contact Information](#)
- [8 Documents / Resources](#)
 - [8.1 References](#)



Flextool FDU-P3 Petrol Drive Unit



Product Information

Specifications

- **Product Name:** Flextool Drive Unit FDU-P3 (Heavy-Duty)
- **Version:** 4.0 (November 2023)
- **Product Code:** NPS01957-UNIT

Product Usage Instructions

Assembly

Follow the assembly instructions provided in the manual to properly set up the Flextool Drive Unit FDU-P3.

Service Kits

Refer to the spare parts manual for information on available service kits, such as AS-1, SK-1, SK-2, SK-3, SK-4, and SK-5. Use the appropriate service kit as needed for maintenance or repairs.

Maintenance

Regularly inspect and maintain the drive unit to ensure optimal performance. Refer to the manual for maintenance schedules and procedures.

FAQ

- **Q: Where can I find more information about the product?**

A: For more detailed information, visit flextool.com.au or contact Flextool customer support at the provided phone number.

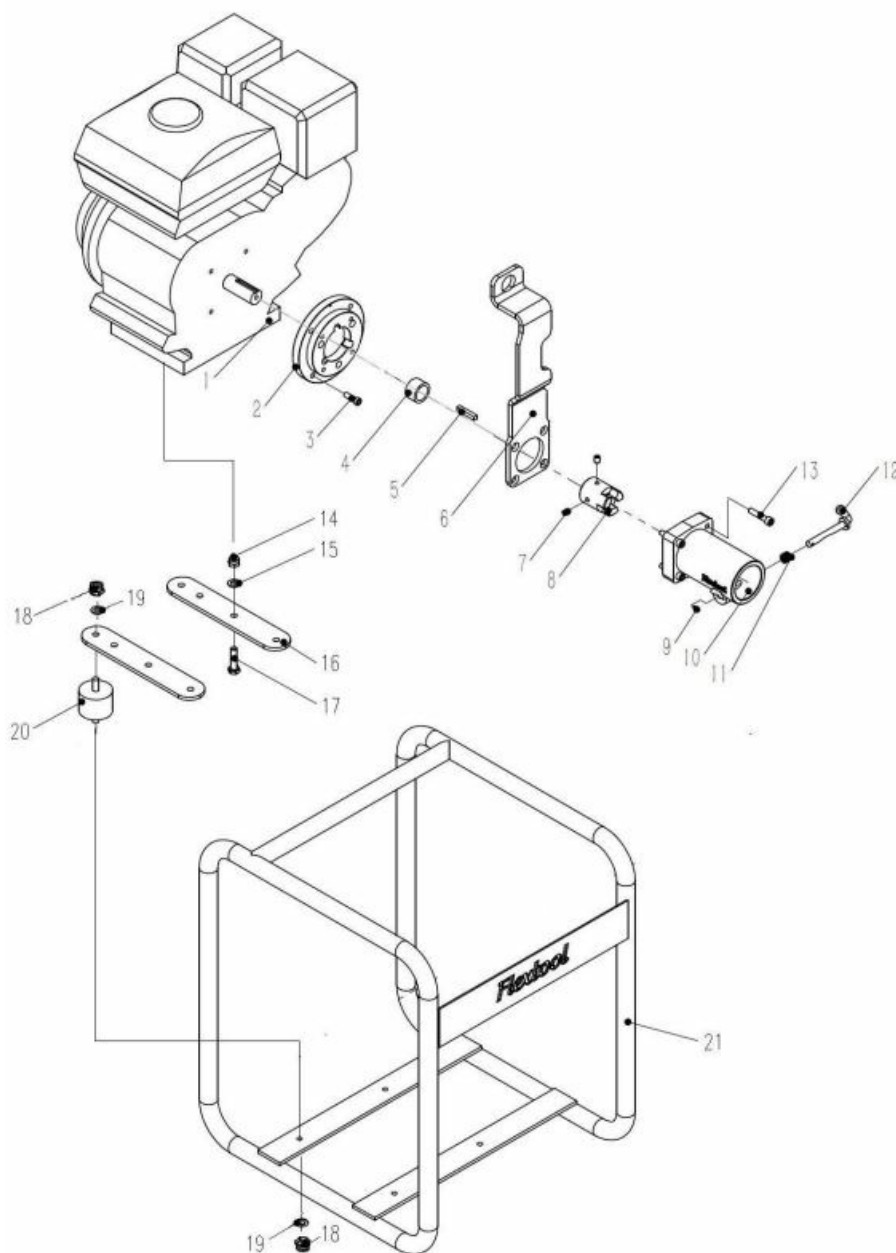
- **Q: How do I identify the correct spare parts for replacement?**

A: Refer to the spare parts manual and product codes listed to identify the specific spare parts needed. Pay attention to the quantity and remarks for each item.

- **Q: What should I do if I encounter issues with the drive unit?**

A: If you experience any issues or difficulties with the drive unit, refer to the troubleshooting section in the manual or contact customer support for assistance.

SPARE PARTS



Item N o.	Product Code	Description	Qty	Remarks
1	NPS01957-UNIT	HON ENGINE GX270 QX (CNVR4B-001)	1	
2	See Remarks	FLX ADAPTOR BELL HOUSING (CNVR4B-002)	1	Use SK-1
3	See Remarks	FLX SOCKET HEAD CAP SCREW (CNVR4B-003)	4	Use SK-1
4	See Remarks	FLX SPACER (CNVR4B-004)	1	Use SK-2

5	NPS00779-U NIT	FLX KEY (CNVR4B-005)	1	
6	NPS02891-U NIT	FLX LIFTING HOOK (CNVR3-010)	1	
7	See Remarks	FLX GRUB SCREW (CNVR4B-007)	1	Use SK-2
8	See Remarks	FLX DRIVE DOG (CNVR4B-008)	1	Use SK-2
9	See Remarks	FLX ROLL PIN (CNVR1-011)	1	Use SK-3 or AS-1
10	See Remarks	FLX BELL HOUSING (CNVR1-012)	1	Use AS-1
11	See Remarks	FLX TRIGGER SPRING (CNVR1-013)	1	Use SK-3 or AS-1
12	See Remarks	FLX TRIGGER (CNVR1-014)	1	Use SK-3 or AS-1
13	NPS01581-U NIT	FLX SOCKET HEAD CAP SCREW (CNVR3-015)	4	
14	See Remarks	FLX NYLOCK NUT (CNVR6A-001)	4	Use SK-4
15	See Remarks	FLX FLAT WASHER (CNVR6A-002)	4	Use SK-4
16	NPS9071H- UNIT	FLX MOUNTING PLATE (CNVR4A-003)	2	
17	See Remarks	FLX BOLT (CNVR4A-004)	4	Use SK-4
18	See Remarks	FLX NYLOCK NUT (CNVR6A-001)	8	Use SK-5
19	See Remarks	FLX FLAT WASHER (CNVR4A-002)	8	Use SK-5
20	See Remarks	FLX RUBBER MOUNT (CNVR4A-005)	4	Use SK-5
21	NPS01583-U NIT	FLX DRIVE UNIT FRAME FDU-P3 (CNVR4A-006)	1	

Assembly/Service Kits

Item N o.	Product Code	Description	Qty	Remarks
AS-1	NPS03374-U NIT	FLX ASSY BELL HOUSING (CNVR3-017)	1	Inc Items: 9, 10, 11, 12

SK-1	NPS01584-U NIT	FLX SERVICE KIT ADAPTOR BELL HOUSING (CNVR4B-014)	1	Inc Items: 2, 3
SK-2	NPS09232-U NIT	FLX SERVICE KIT DRIVE DOG GX270-QX (25.4MM) (CNVR4B-015)	1	Inc Items: 4, 7, 8
SK-3	NPS07159-U NIT	FLX SERVICE KIT TRIGGER (CNVR3-019)	1	Inc Items: 9, 11, 12
SK-4	NPS03048-U NIT	FLX SERVICE KIT BOLT SET FDU (CNVR6A-008)	1	Inc Items: 14, 15, 17
SK-5	NPS01579-U NIT	FLX SERVICE KIT RUBBER MOUNT FDU (CNVR2-020)	1	Inc Items: 18, 19, 20

This manual summarises our best knowledge of the product based on the information available at the time of publication. You should read this manual carefully and consider the information in the context of how the product will be used. Our responsibility for products sold is subject to our standard terms and conditions of sale.

DISCLAIMER

Any advice, recommendation, information, assistance or service provided by us in this manual is given in good faith and is believed by us to be appropriate and reliable. However, any advice, recommendation, information, assistance or service provided by us is provided without liability or responsibility PROVIDED THAT the foregoing shall not exclude, limit, restrict or modify the right entitlements and remedies conferred upon any person or the liabilities imposed upon us by any condition or warranty implied by Commonwealth, State or Territory Act or ordinance void or prohibiting such exclusion limitation or modification. The product can be expected to perform as indicated in this manual so long as the operation and operational procedures of the individual products are followed as recommended in this manual.

Design and technical specifications may be subject to changes.

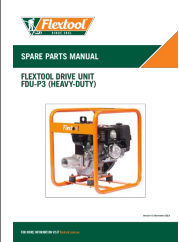
© This publication is copyrighted. All rights are reserved. Flextool is a registered trade mark of Parchem Construction Supplies Pty Ltd.

Contact Information

Flextool

- 1956 Dandenong Road, Clayton VIC 3168, Australia.
- **Phone (AUS):** 1300 353 986
- flextool.com.au
- ABN 80 069 961 968

FOR MORE INFORMATION VISIT flextool.com.au.

	<p>Flextool FDU-P3 Petrol Drive Unit [pdf] Instruction Manual</p> <p>FDU-P3, FDU-P3 Petrol Drive Unit, Petrol Drive Unit, Drive Unit, Unit</p>
--	---

References

- [🔗 Concrete Equipment and Tools - From Site Preparation to Surface Preparation | Flextool](#)
- [User Manual](#)

[Manuals+](#), [Privacy Policy](#)

This website is an independent publication and is neither affiliated with nor endorsed by any of the trademark owners. The "Bluetooth®" word mark and logos are registered trademarks owned by Bluetooth SIG, Inc. The "Wi-Fi®" word mark and logos are registered trademarks owned by the Wi-Fi Alliance. Any use of these marks on this website does not imply any affiliation with or endorsement.