




# FLEXSON E300FS Floor Stand User Manual

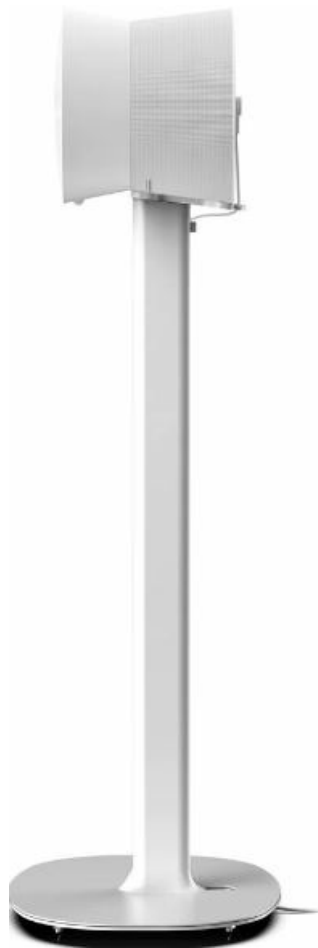
[Home](#) » [FLEXSON](#) » FLEXSON E300FS Floor Stand User Manual 

## Contents

- 1 FLEXSON E300FS Floor Stand
- 2 Product Information
- 3 Product Usage Instructions
- 4 Frequently Asked Questions (FAQ)
- 5 TOOLS
- 6 INSTALLATION
- 7 Documents / Resources
  - 7.1 References



**FLEXSON E300FS Floor Stand**



## Product Information

### Specifications

- Product Model: E300FS
- Components:
  - M6 x 50mm Button Head Hex-drive
  - M6 Metal Spike
  - M6 Nut Metal
  - M6 Plastic Leg
  - M6 x 20mm Counter-sunk Head Hex-drive
  - M5 x 12/16mm Countersunk Head Hex-drive
  - 3mm / 4mm Allen key
- Manufacturer: Exertis (UK) Ltd.
- Address: St George House, Parkway, Harlow Business Park, Harlow, Essex, CM19 5QF, UK
- Distributor: Exertis Supply Chain Services Ltd.
- Distributor Address: Sarseld Road, Raheem Bussiness Park, Limerick, V94 N72W
- Contact Email: [support@flexson.com](mailto:support@flexson.com)

## Product Usage Instructions

### Step 1: Assembling the Stand

1. Start by attaching the M6 Metal Spike to the M6 x 50mm Button Head Hex-drive using the M6 Nut Metal.
2. Insert the assembled spike into the ground or a stable surface to provide stability for the stand.
3. Attach the M6 x 20mm Counter-sunk Head Hex-drive to the top of the spike.
4. Screw in the M6 Plastic Leg onto the M6 x 20mm Counter-sunk Head Hex-drive to create a stable base for the stand.

### Step 2: Mounting the Device

1. Using the provided 3mm / 4mm Allen key, adjust the stand height and angle according to your preference.
2. Place your device on the stand, ensuring it is securely held in place.
3. If necessary, use the M5 x 12/16mm Countersunk Head Hex-drive to further secure the device to the stand.

### Step 3: Adjusting the Stand

If you need to adjust the height or angle of the stand, use the 3mm / 4mm Allen key to loosen or tighten the appropriate screws. Once adjusted, tighten the screws securely to ensure stability.

### Frequently Asked Questions (FAQ)

#### Q: Can I use this stand for any device?

A: The stand is designed to accommodate various devices. However, please check the compatibility of your specific device with the provided components before use.

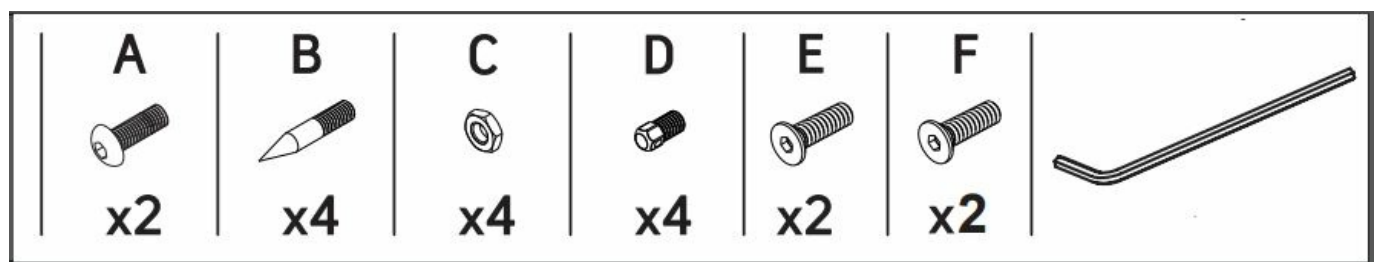
#### Q: How do I clean the stand?

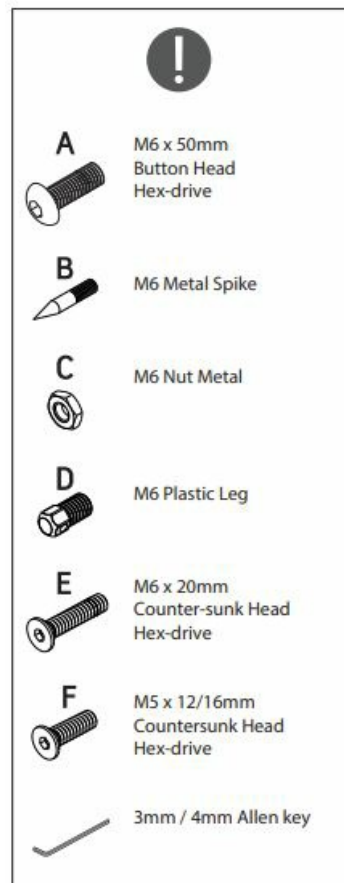
A: To clean the stand, use a damp cloth and mild detergent. Avoid using harsh chemicals or abrasive materials that may damage the surface.

#### Q: Can I disassemble the stand for storage or transport?

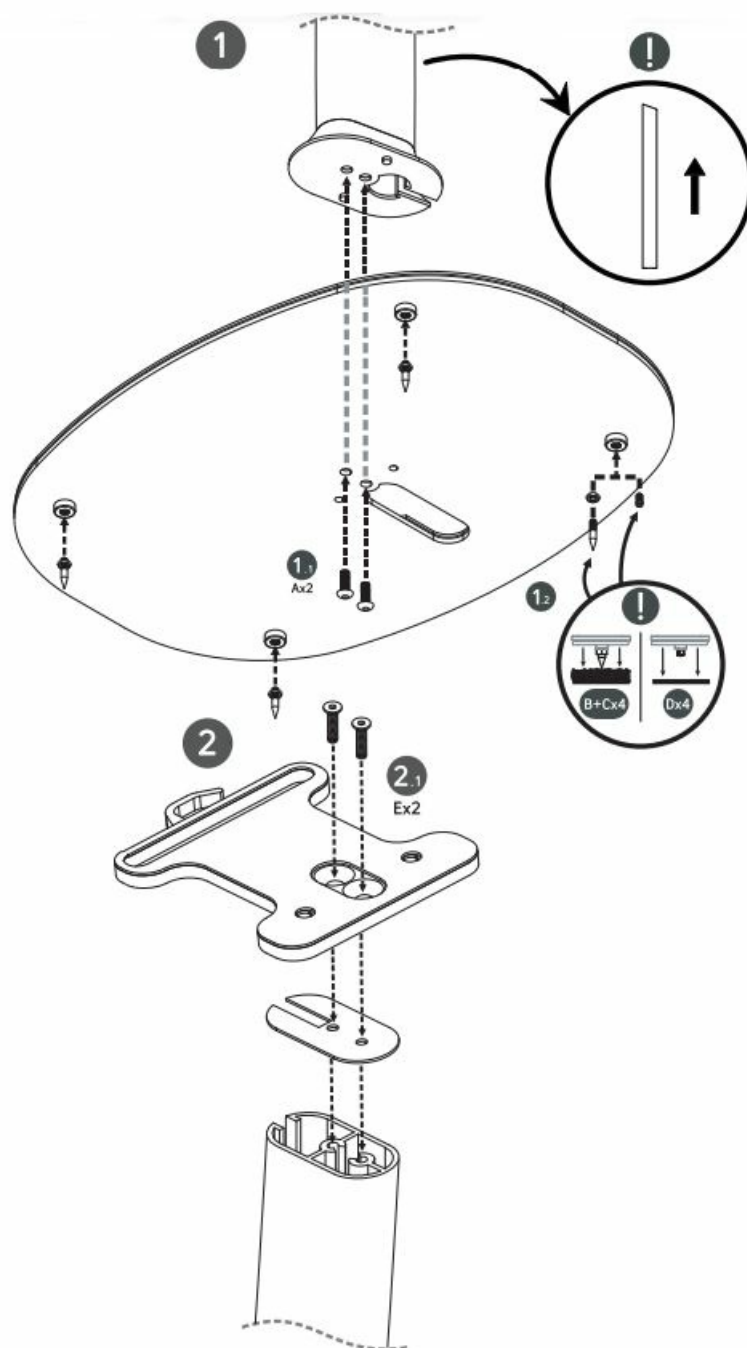
A: Yes, you can disassemble the stand by following the reverse order of the assembly instructions. This makes it convenient for storage or transportation.

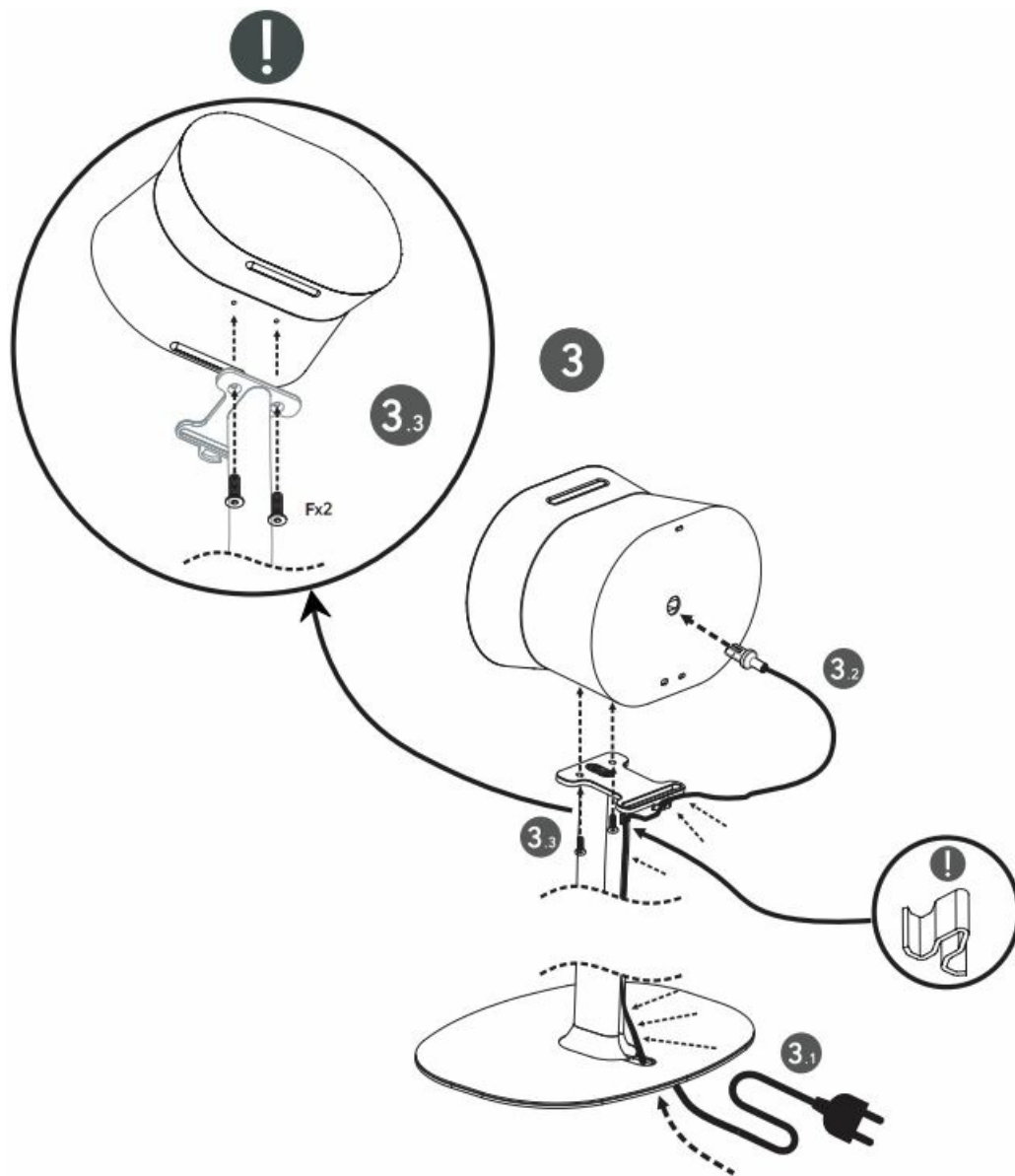
### TOOLS



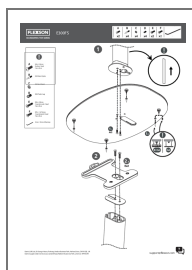


## INSTALLATION





## Documents / Resources



[FLEXSON E300FS Floor Stand](#) [pdf] User Manual  
E300FS Floor Stand, E300FS, Floor Stand, Stand

## References

- [User Manual](#)