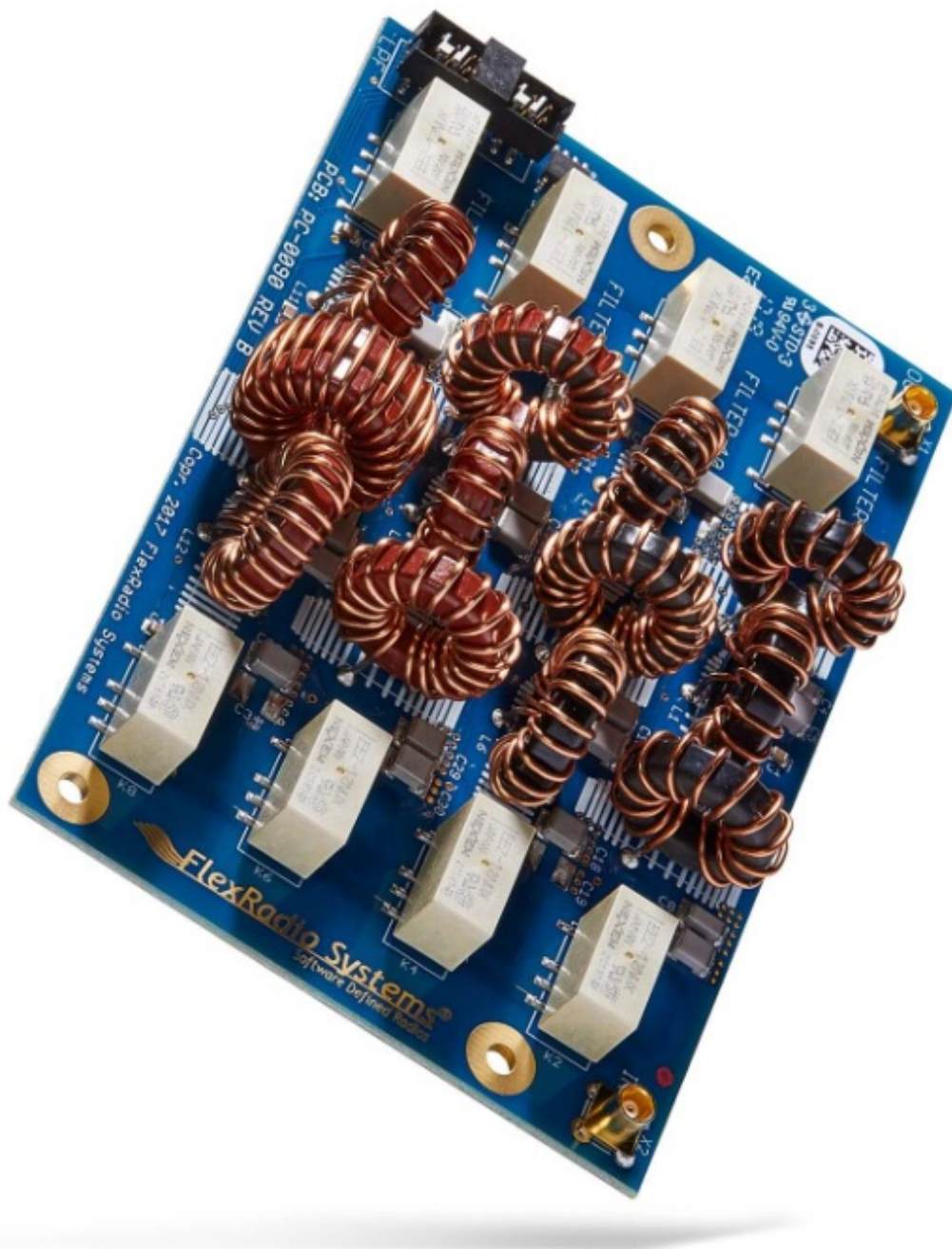


FlexRadio FLEX-6400 Extended Transmit Module Instruction Manual

[Home](#) » [FlexRadio](#) » FlexRadio FLEX-6400 Extended Transmit Module Instruction Manual 

FlexRadio FLEX-6400 Extended Transmit Module



Contents

- 1 [FLEX-6400\(M\) Extended TX Module Installation Instructions without an ATU Installed](#)
- 2 [Prerequisites for Installing the EXT](#)
 - 2.1 [Procedure](#)
- 3 [Documents / Resources](#)
- 4 [Related Posts](#)

FLEX-6400(M) Extended TX Module Installation Instructions without an ATU Installed

Thank you for purchasing the EXT TX Kit for your FLEX-6400(M) radio. You will need the following tools to complete the installation.

- One (1) EXT TX Kit (See illustration below)
 - (1) EXT TX Board on the mounting platform
 - 1) Ribbon Cable

- (1) Short Coax Cable with 1 right angle & 1 straight connector
 - (1) Long Coax Cable with 2 right-angle connectors
 - (3) Standoffs
 - (4) Screw
- 3/16 Hex Nut Driver
- Phillips screwdriver
- T8 Torx Key (provided) for removal of radio cover



Prerequisites for Installing the EXT

TX The EXT TX Kit is designed as a field-installable option. Before starting, remember to observe proper ESD (electro static discharge) procedures before attempting the installation of the FLEX6400(M) EXT TX to prevent damage that may occur from static charges that can build up on your body or work surfaces. This is especially a concern during the winter months or in climates where the relative humidity can be very low.

Procedure

Step 1: Carefully remove the 4 screws from the top cover of the FLEX-6400(M) with the T8 Torx.

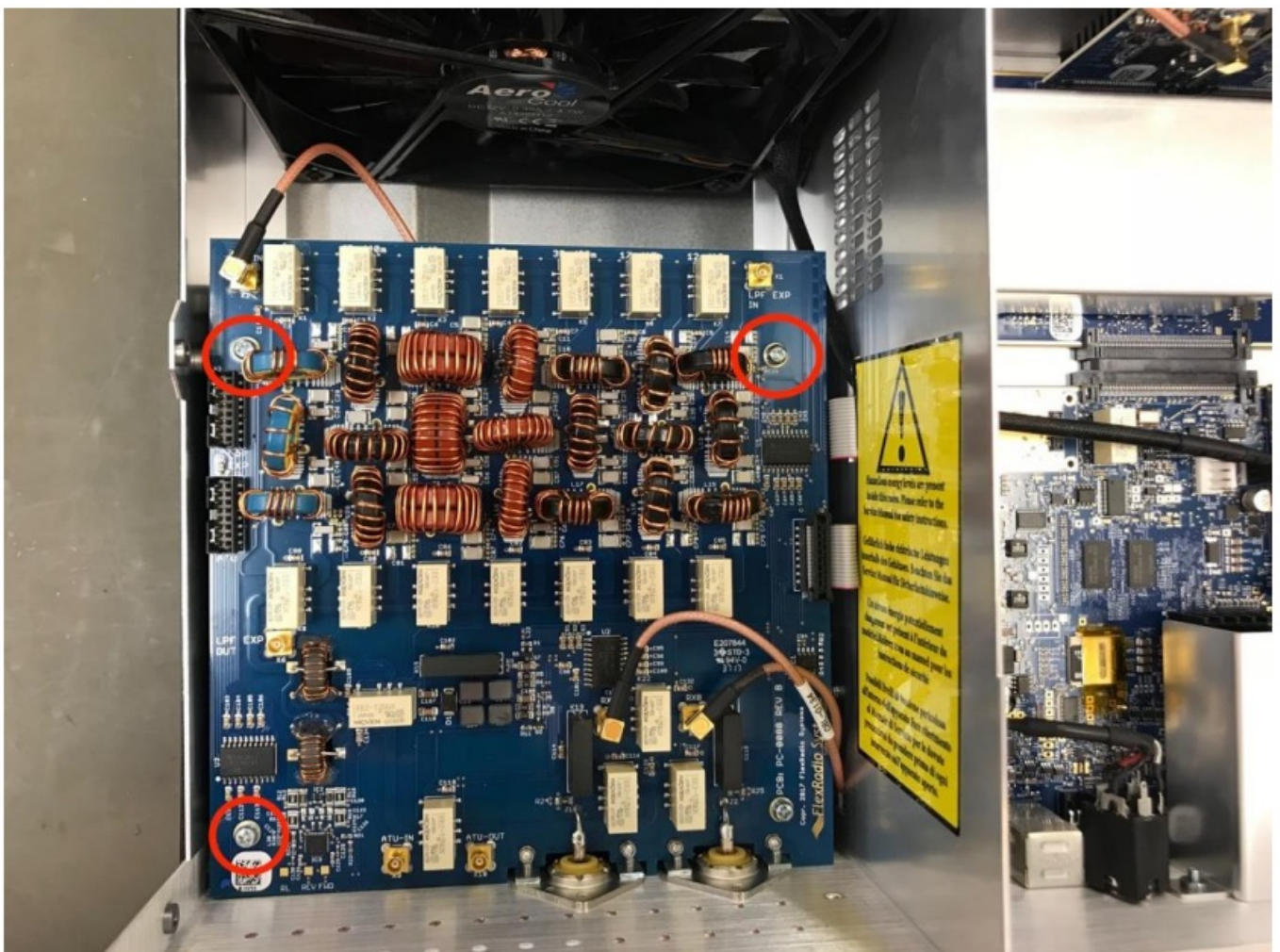


Step 2: Carefully remove screws (5 on each side) from both sides of the top cover using the T8 Torx.



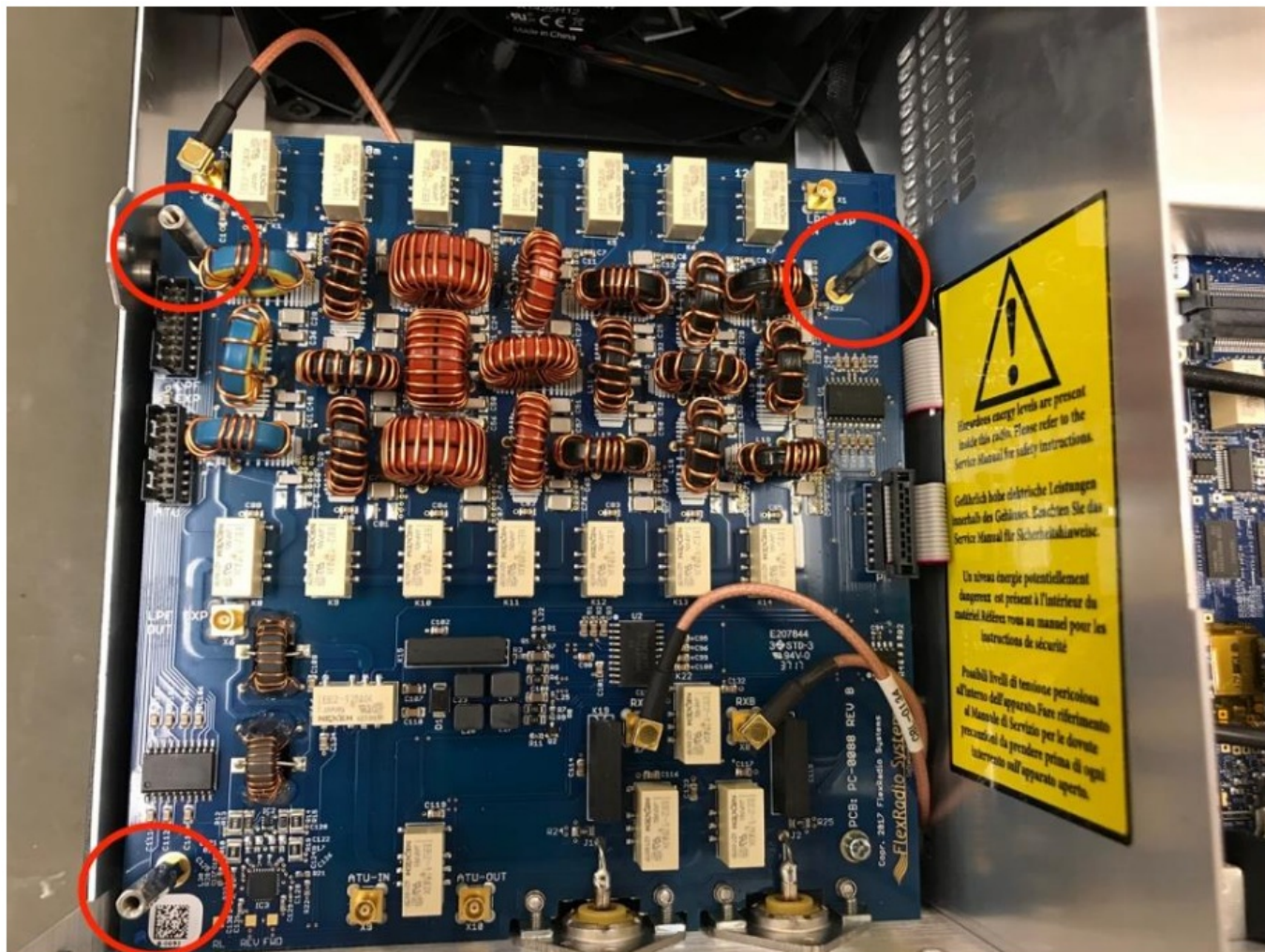
Step 3: Remove the top cover and handle gently so as not to scratch the cover. Set aside.

Step 4: With a Phillips head screwdriver, remove the 3 screws and washers from the top board (LPF) that sits behind the main fan. Set aside. (Note: only remove the 3 screws identified by red circles, leaving the 4th screw in place)

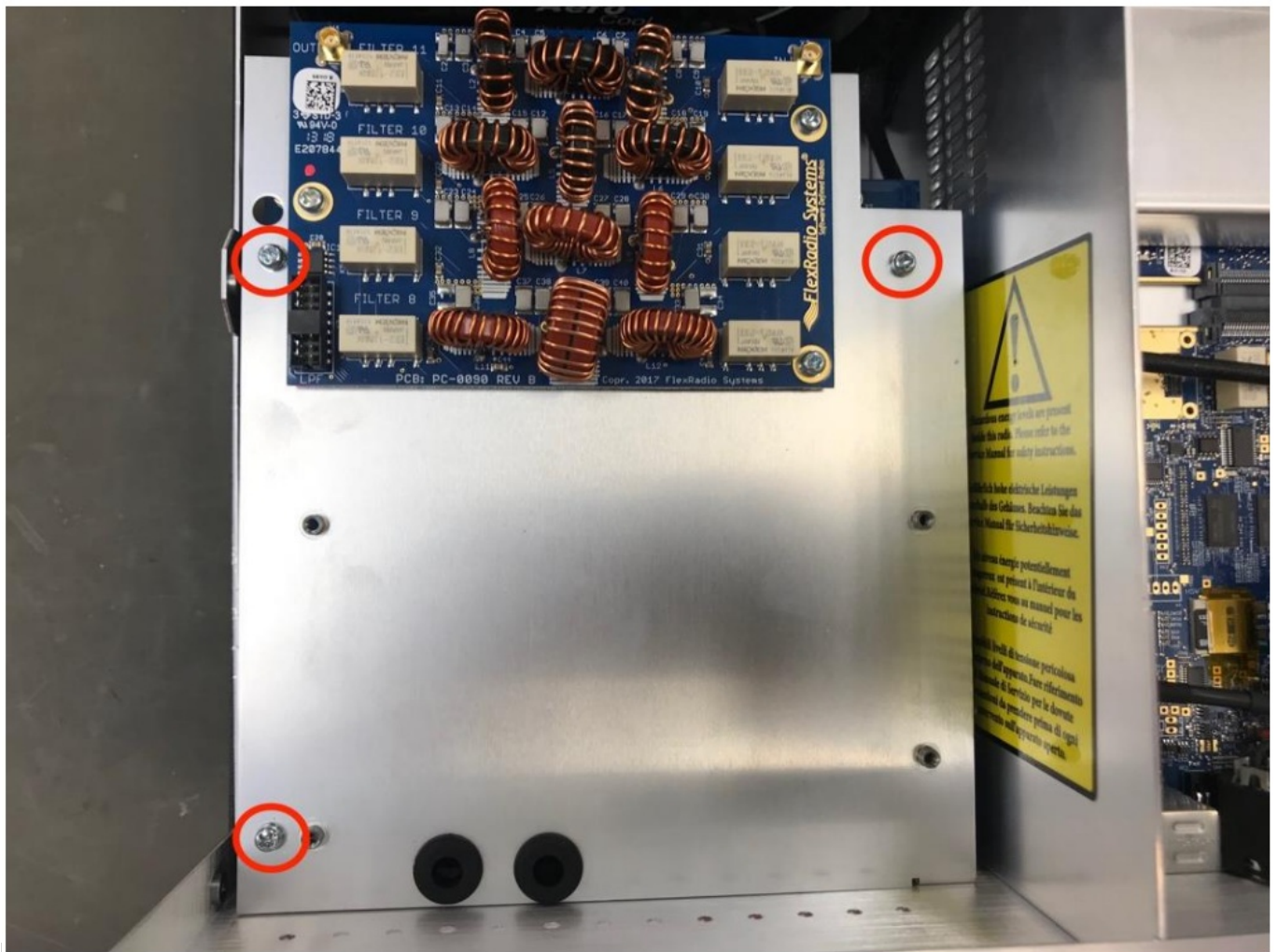


Step 5: Where the 3 screws were removed above, replace them with the 3 stand-offs included in the kit as shown

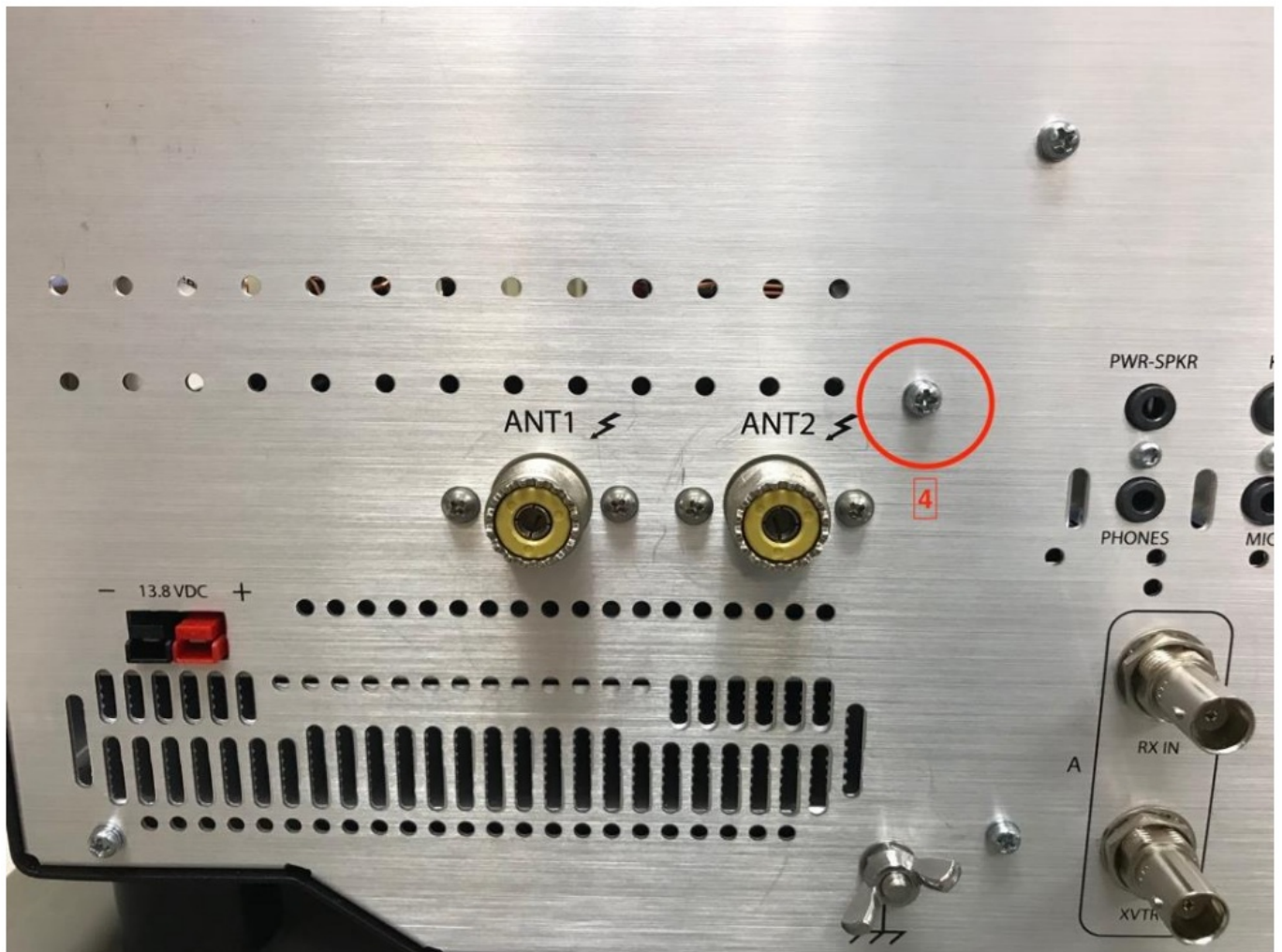
below and tighten with a 3/16th hex driver.



Step 6: Remove EXT TX with the attached mounting platform from the bag and place it on the standoffs with the holes aligned. Install the 3 screws that were removed to secure the EXT TX to the radio.



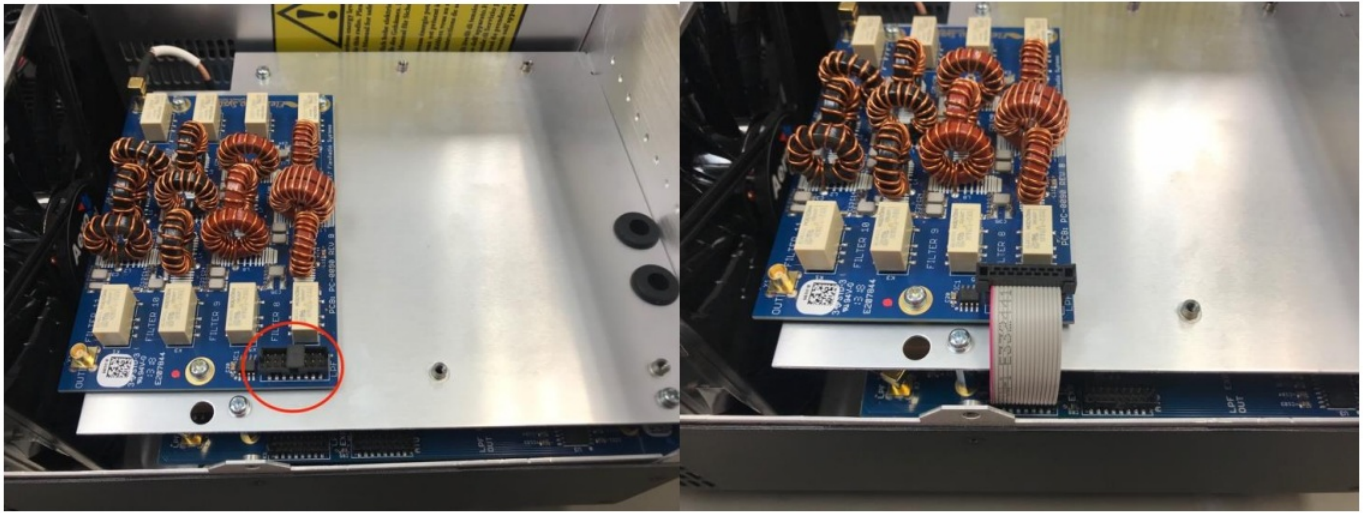
Step 7: Install a 4th screw included in the kit through the backside of the radio as shown below. It secures the mounting platform corner without a standoff.



Step 8: Connect the short coax cable included in the kit into the X1 connector of the LPF board below. Connect the right-angle connector of the coax to X2 of the EXT TX board. **(Be careful to insert coax connectors in straight to avoid damaging the center pin. You will hear a “click” when installed correctly.)**



Step 9: Remove plastic insert from X3 connector of EXT TX. Connect the ribbon cable included in the kit to the X3 connector on the LPF board below first, then connect to the X3 connector of EXT TX board above.




Step 10: Attach one end of the long coax cable to X6 of the LFP board below. Then route cable outside ribbon cable and attach the other end to X1 of the EXT TX board above. (Be careful to insert coax connectors in straight to avoid damaging the center pin. You will hear a “click” when installed correctly.)



Step 11: Replace the top cover being careful to not pinch the coax cable and screw it into place using 4 screws in the top cover and 5 screws on each side.



Documents / Resources

	<p>FlexRadio FLEX-6400 Extended Transmit Module [pdf] Instruction Manual FLEX-6400, Extended Transmit Module, FLEX-6400M</p>
---	--