



# FlexRadio FLEX-6000 Series Maestro Control Console User Guide

[Home](#) » [FlexRadio](#) » FlexRadio FLEX-6000 Series Maestro Control Console User Guide 

## FlexRadio FLEX-6000 Series Maestro Control Console



### Contents

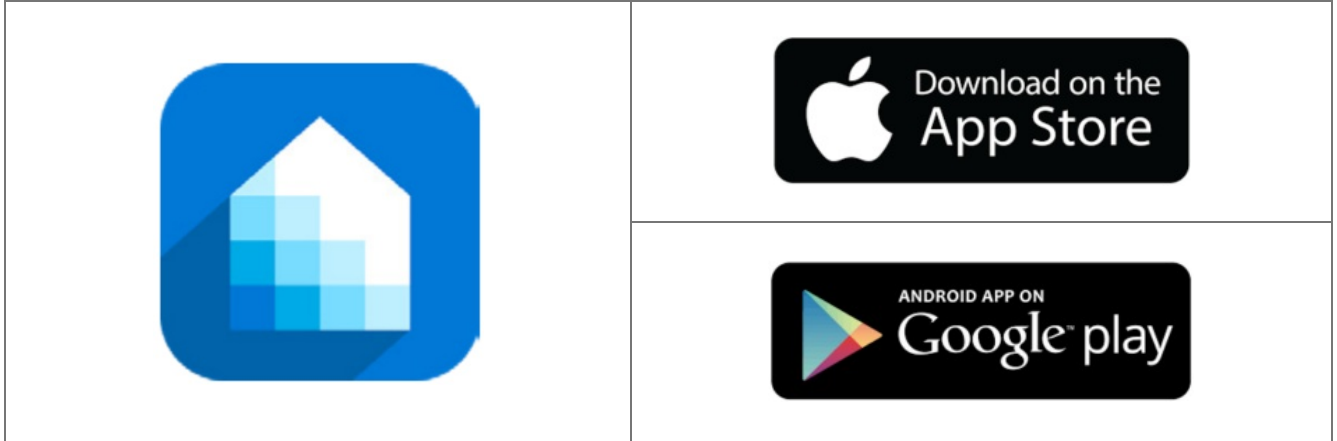
- [1 Package Includes](#)
- [2 Instructions](#)
- [3 Documents / Resources](#)
- [4 Related Posts](#)

### Package Includes

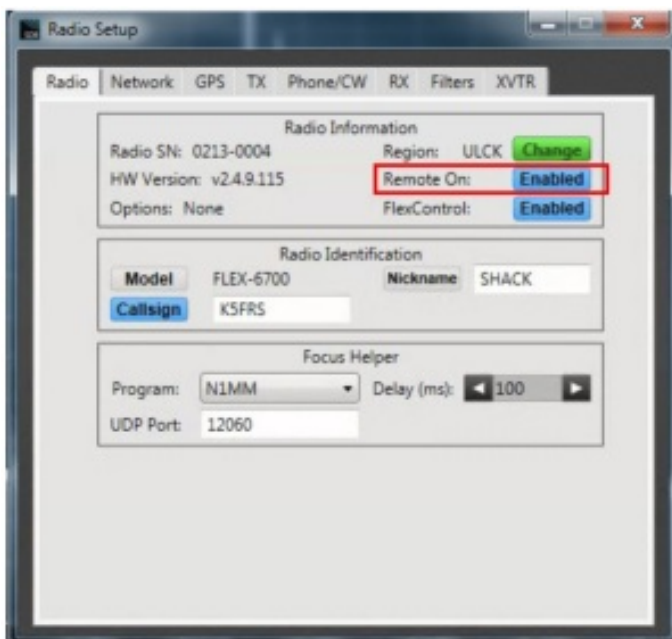
- 1 Kasa Smart Wi-Fi Plug Mini
- 1 Digital Logger AC powered relay
- 1 RCA Cable

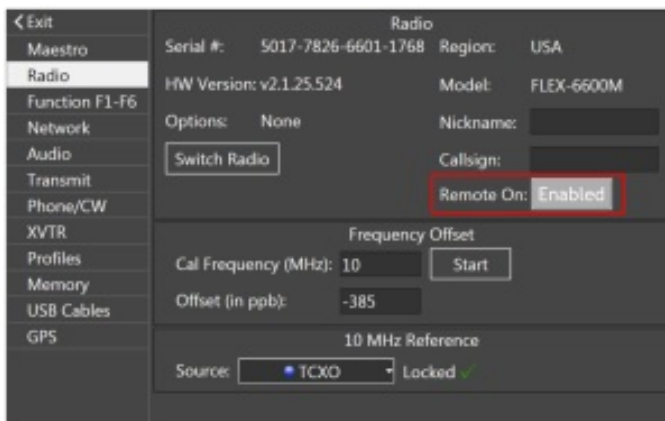
## Instructions

1. Download Kasa application from iOS or Android App Store.



2. Plug in Kasa Smart Plug to a 12vac outlet
3. Follow Kasa setup instructions on iOS or Android application. – Name the plug “FlexRadio Remote On” or another name easily recognizable.
4. Set Digital Logger switch to the “Reset” state.
5. Plug the RCA into “REM ON” input on the back of the radio.
6. Enable remote on in the settings menu of the radio. – Settings/Radio Setup – Remote On: Change to “Enabled”.





7. Now when the Kasa switch is triggered on/off it will boot/shutdown the radio.

For Additional Radio Information Refer to the User Manual at [flexradio.com/downloads](https://flexradio.com/downloads)  
 Copyright FlexRadio Systems 2019 – Kasa is a trademark of TPLink – App Store is a trademark of Apple –  
 Andoid & Google Play are trademarks of Google



## Documents / Resources

	<p><a href="#">FlexRadio FLEX-6000 Series Maestro Control Console</a> [pdf] User Guide          FLEX-6000 Series, Maestro Control Console</p>
---	---

[Manuals+.](#)