



FLEXIT cvROBO Docking Station Instruction Manual

[Home](#) » [FLEXIT](#) » FLEXIT cvROBO Docking Station Instruction Manual 

Contents

- 1 FLEXIT cvROBO Docking Station
- 2 Material supplied
- 3 Optional
 - 3.1 Wireless kit
 - 3.2 Joint for flexible tube
- 4 Recommended installation spaces
- 5 Dimensions required
- 6 Connect the charging dock with the self cleaning base
 - 6.1 220V socket out cover
 - 6.2 220V socket inside cover
- 7 WALL CUFF CONECTION TO THE CENTRAL VACUUM SYSTEM INLET
 - 7.1 Socket point with ITR801
 - 7.2 insert deeply until touching
- 8 ASSEMBLY FLEXIBLE HOSE CONNECT TO DOCKING STATION
- 9 ASSEMBLY PROTECTION COVER ON DOCKING STATION
 - 9.1 Connection with wall inlet
 - 9.2 Docking station under kitchen cabinet
- 10 Documents / Resources
 - 10.1 References
- 11 Related Posts



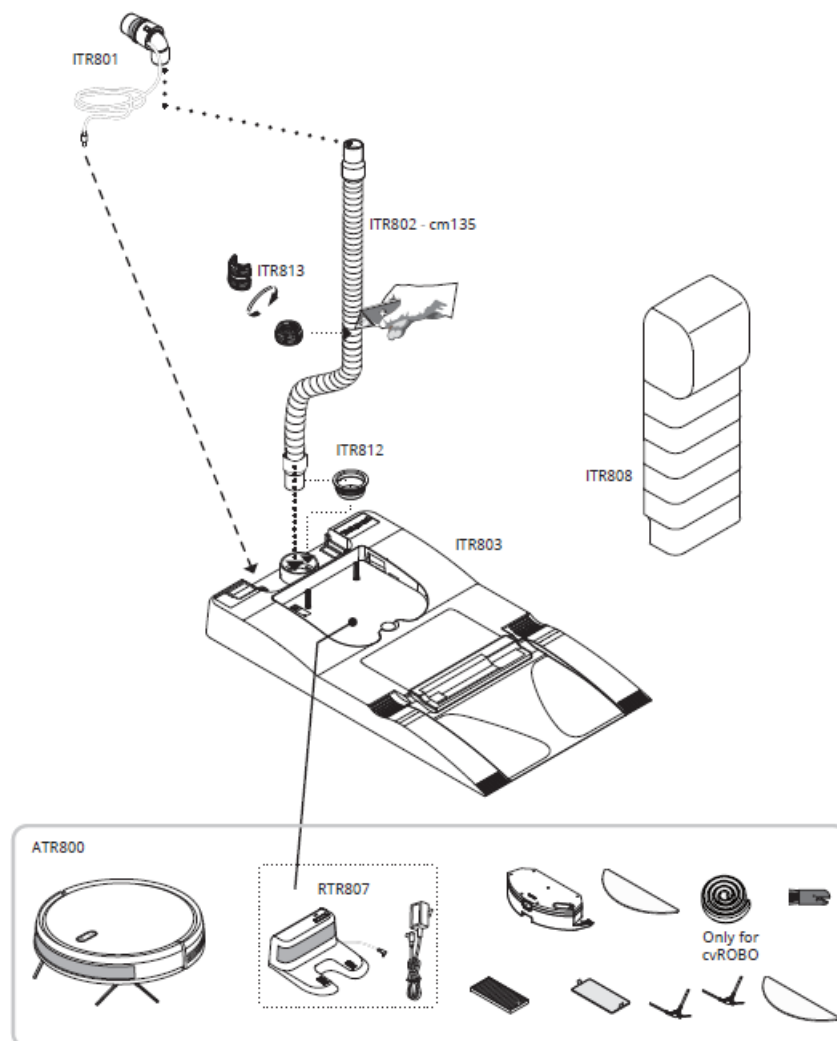
FLEXIT®

FLEXIT cvROBO Docking Station



Material supplied

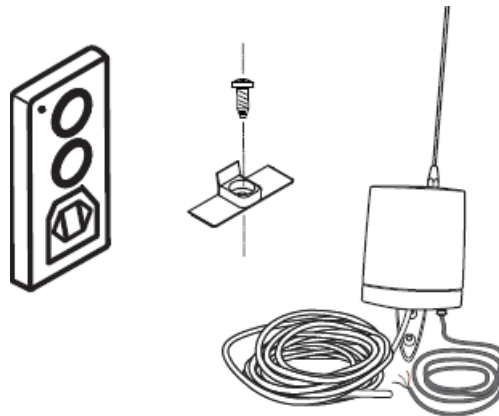
Illustrations show cvROBO. Installation and the docking station function are similar for cvROBO L1.



Optional

Wireless kit

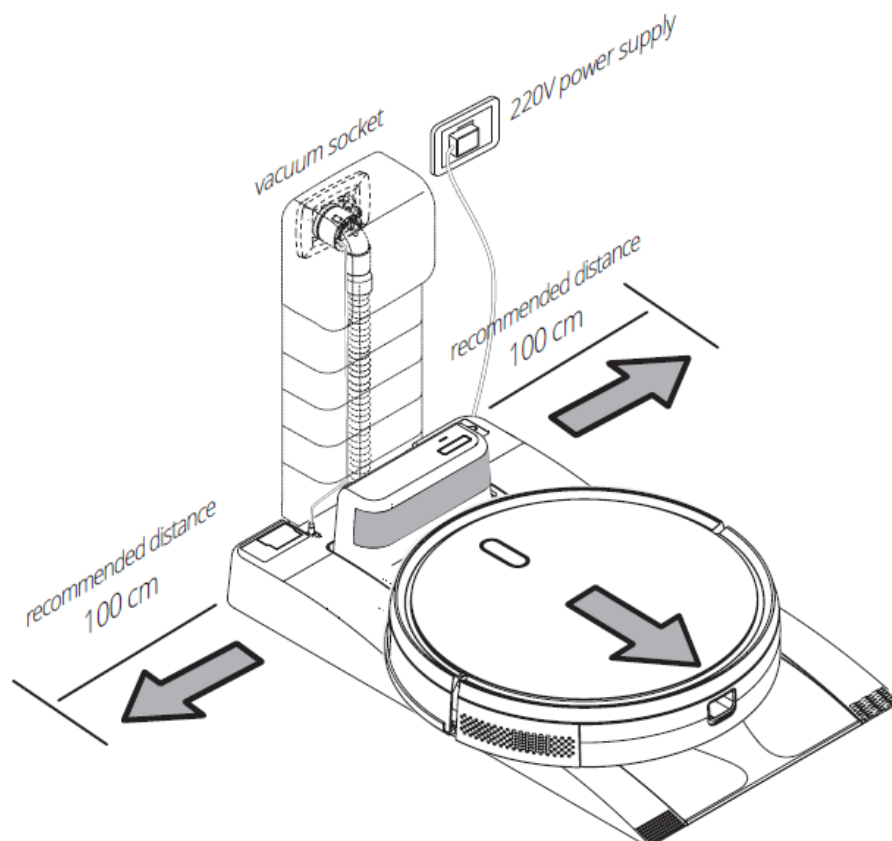
ITR806



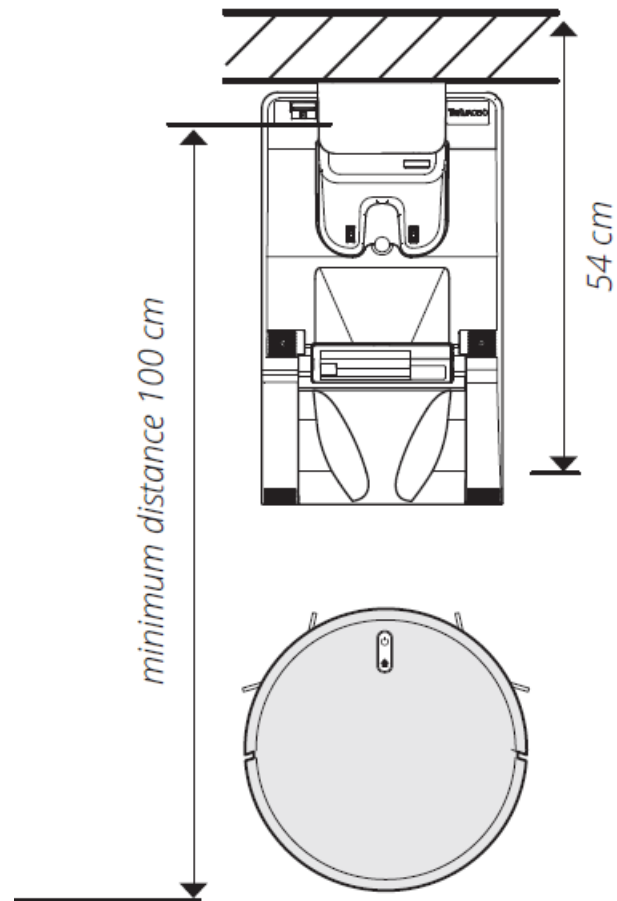
Joint for flexible tube



Recommended installation spaces

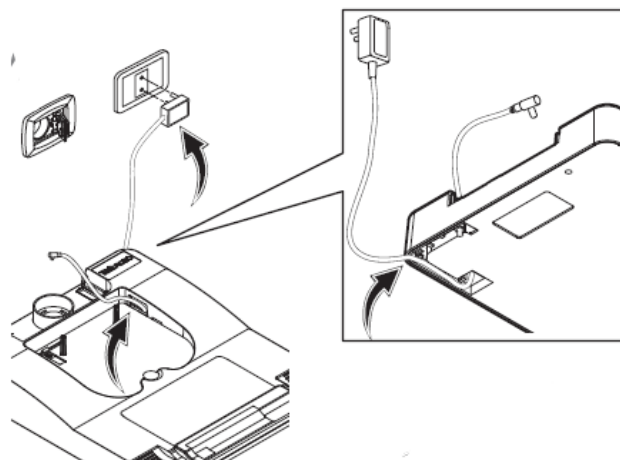


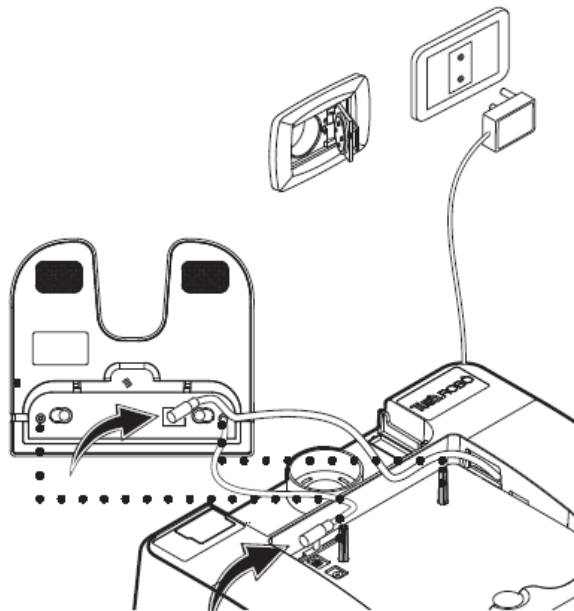
Dimensions required



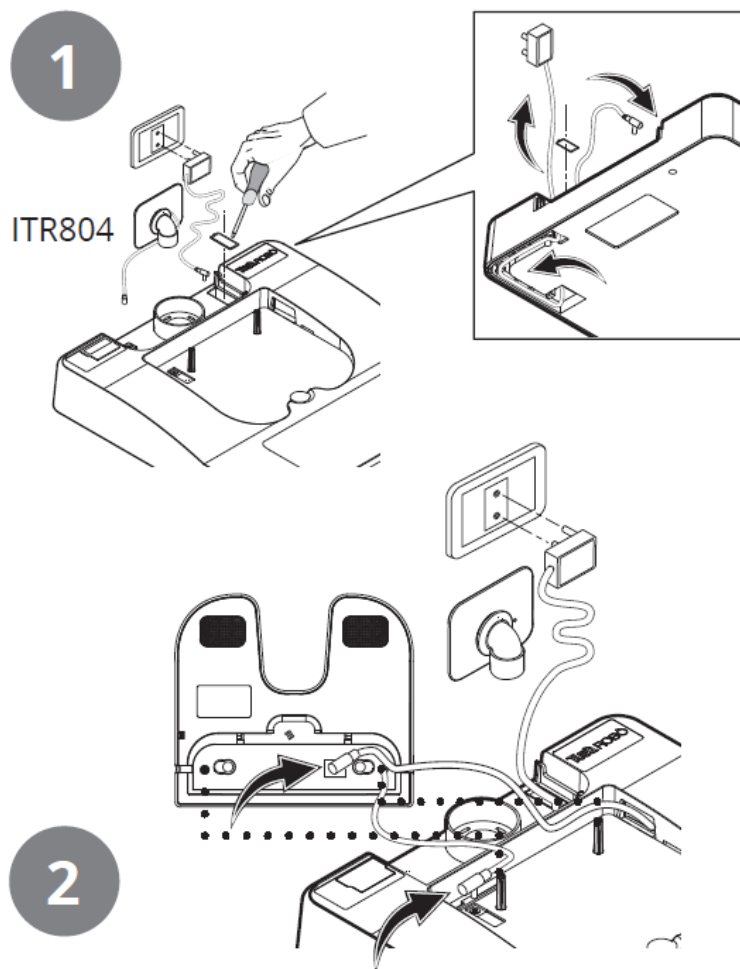
Connect the charging dock with the self cleaning base

220V socket out cover



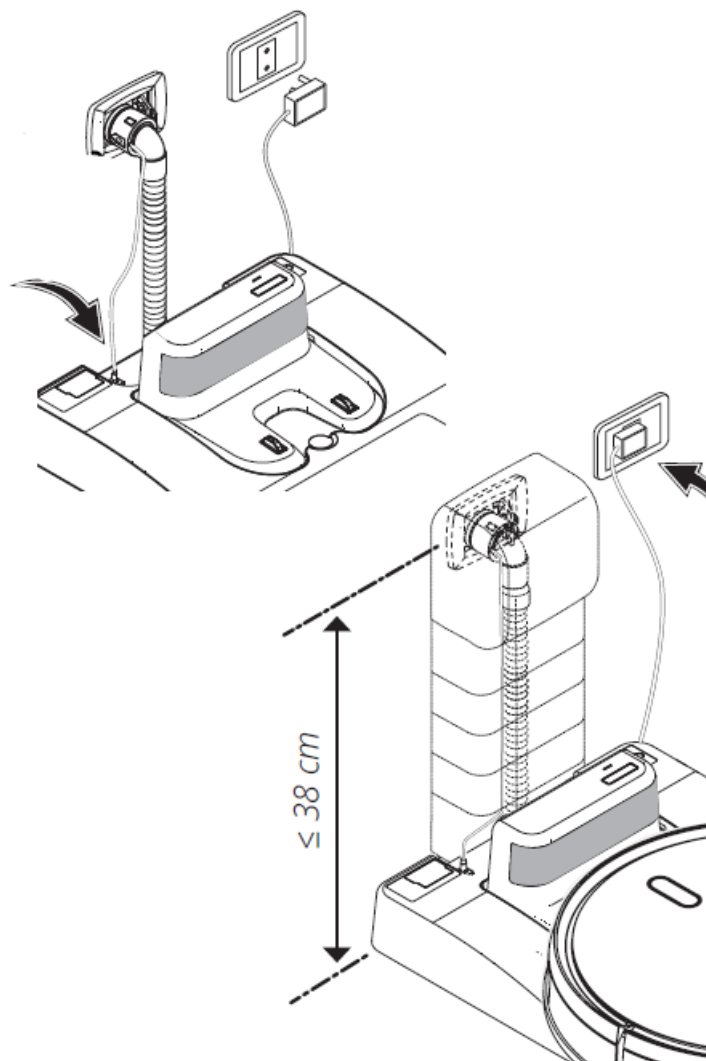


220V socket inside cover

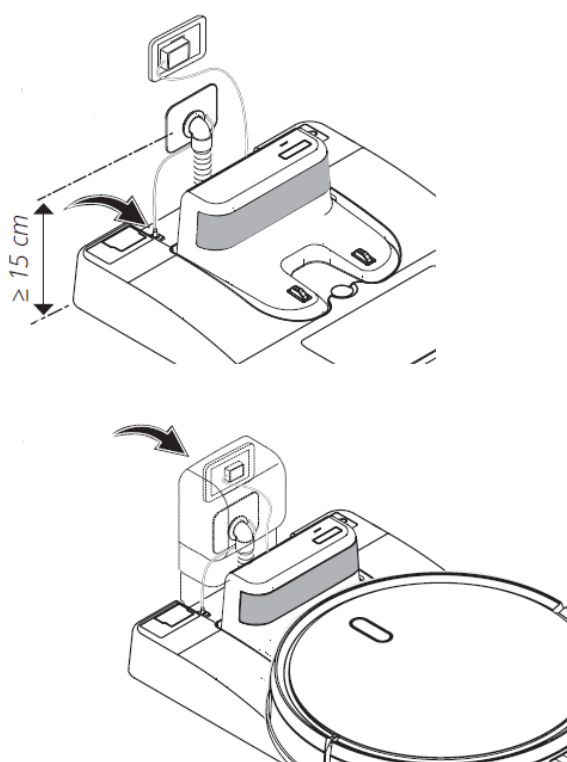


WARNING

The connection cables must be positioned well and must not be squeezed under the charging station.

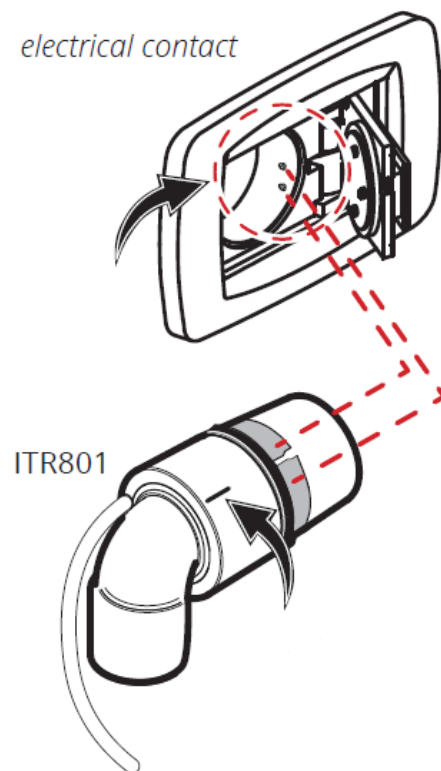


The connection cables must be positioned well and must not be squeezed under the charging station.

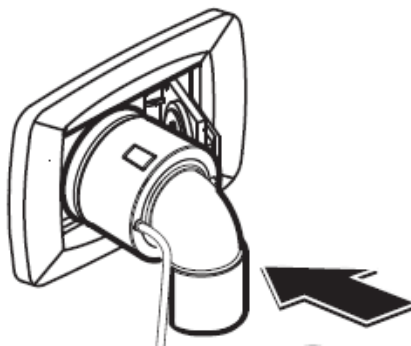


WALL CUFF CONECTION TO THE CENTRAL VACUUM SYSTEM INLET

Socket point with ITR801



insert deeply until touching

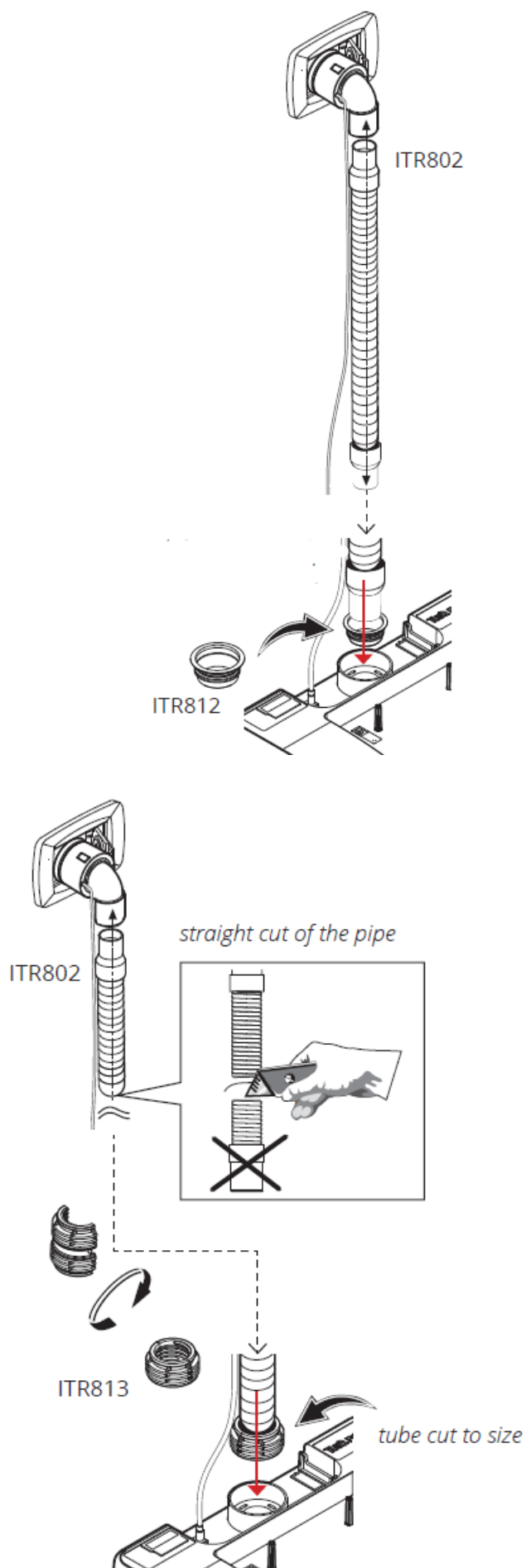


WARNING

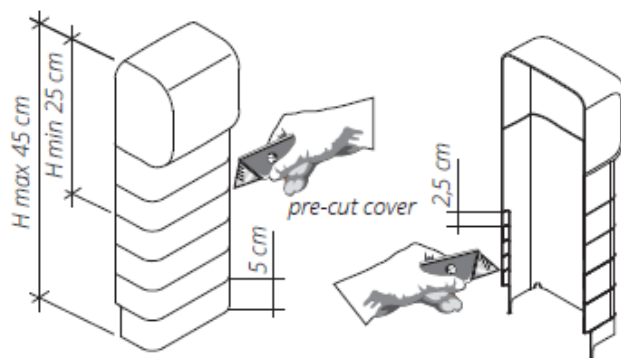
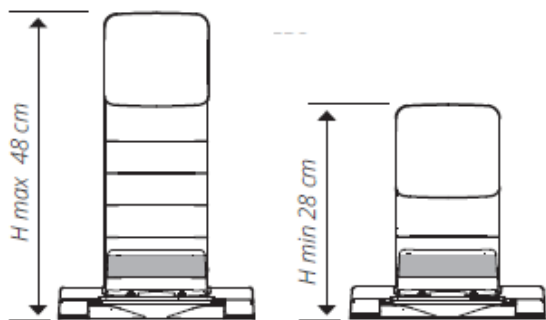
Important that the split on the wall cuff metal ring is placed between the contact plugs in the wall inlet.

ASSEMBLY FLEXIBLE HOSE CONNECT TO DOCKING STATION

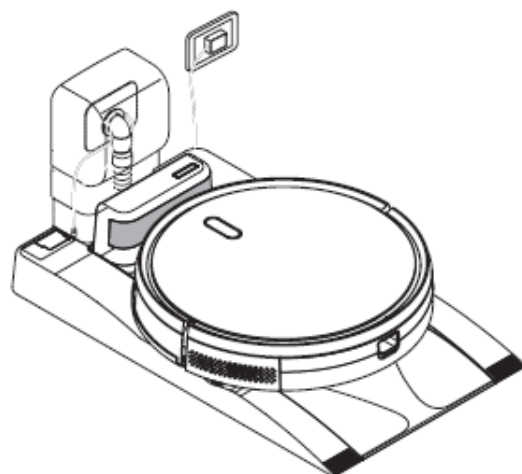
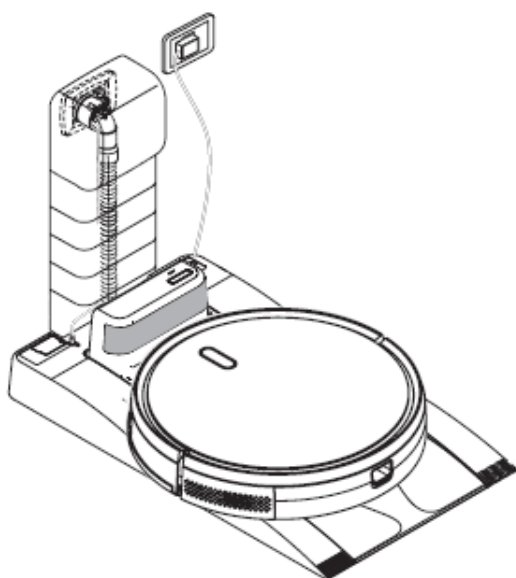
Tube inserted into the base directly



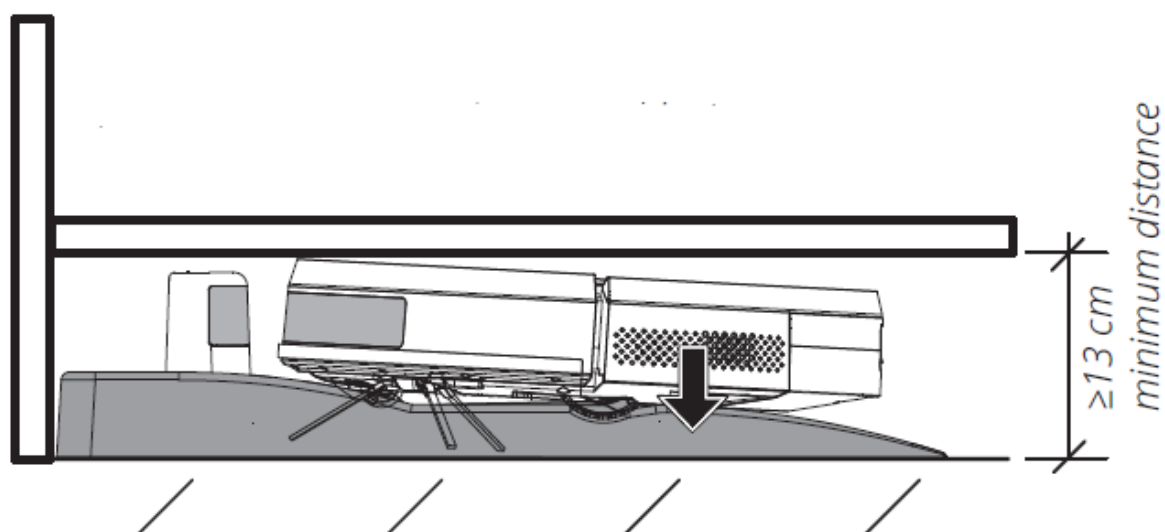
ASSEMBLY PROTECTION COVER ON DOCKING STATION



Connection with wall inlet




Docking station under kitchen cabinet



Watch installation videos on Flexit's website b Scan QR code



Documents / Resources

	<p>FLEXIT cvROBO Docking Station [pdf] Instruction Manual cvROBO L1, cvROBO, Docking Station, cvROBO Docking Station</p>
---	--

References

- [Bedre inneklima - Flexit](#)