



FLEXIT CI 600 Control Panel Installation Guide

[Home](#) » [FLEXIT](#) » FLEXIT CI 600 Control Panel Installation Guide 

Contents

- 1 FLEXIT CI 600 Control Panel
- 2 Dolt montage
- 3 Surface installation
- 4 Finish
- 5 CI600 overview
- 6 CI600 in use
- 7 Menu navigation
- 8 Start menu
- 9 CI600 main menu
- 10 Settings
- 11 Information and alarm
- 12 Documents / Resources
 - 12.1 References



FLEXIT CI 600 Control Panel



Dolt montage



Surface installation



Finish



CI600 overview



No.

1. UP/INCREASE switch
2. BACK/CANCEL/NO switch
3. DOWN/DECREASE switch
4. OK/YES switch
5. HELP switch
6. Display
7. Indication of OPERATION/OK – Greenlight
8. Indication of FILTER REPLACEMENT – Yellow light
9. Indication of ALARM – Red light

CI600 in use

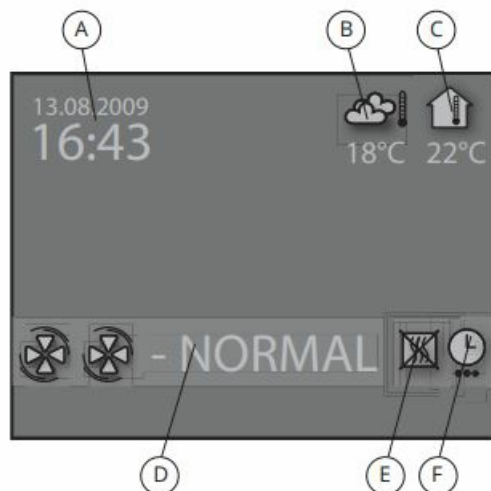
General

The control unit consists of a colour display, a touch panel and indicators (LEDs). The unit communicates with the

ventilation unit via a low-voltage cable.

Standby mode

If the touch panel is not used, the control unit will, after a certain period, enter idle mode, in which operating information will be displayed.

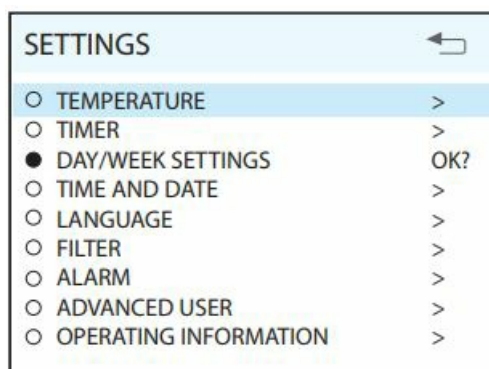


Time and date

- Outdoor air temperature
- Room temperature
- Current speed
- Additional heating activated/deactivated
- Daily/weekly timer active

Menu navigation

Buttons 1 and 3 are used to navigate through the menu lines. The cursor is illustrated by the line is light blue. If it is possible to make a selection on the current menu line, this is displayed with OK? to the right of the line. If a menu line contains a submenus, this is illustrated with a '>' sign at the end of the line. If you select a function that has numerical values, the current value is displayed with a light blue cursor. The value is changed with buttons 1 and 3. If several values can be changed, the cursor with button The procedure is repeated until all values have been changed to the desired values. If you want to cancel a function or return to the previous menu screen, use the button Describe the current menu screen.



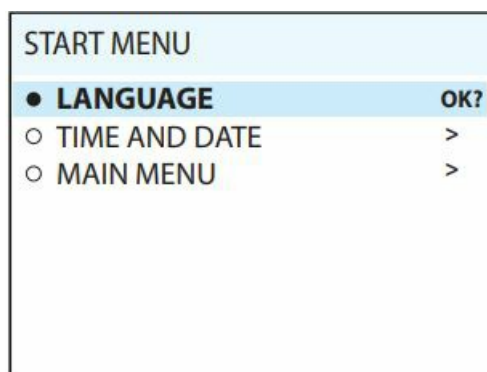
Start menu

When the system is started, a start menu is opened. The basic language and date settings are set in this menu. When this activity has been carried out, you choose to go to the main menu.

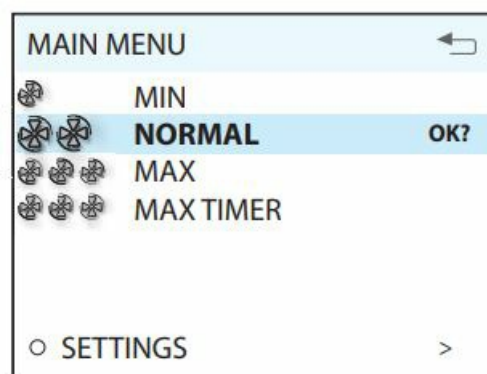


Operating status

In normal operation without problems, the green system is described in subsequent sections.



CI600 main menu



Fan speeds

The main menu contains various choices. The biggest concern is fan speeds. The speed selected is indicated with large fan symbols and bold font. To change the speed, move the cursor with button 4 and the speed selected is highlighted with large fan symbols and bold font.

SETTINGS

○ TEMPERATURE

>

○ TIMER

>

● DAY/WEEK SETTINGS

OK?

○ TIME AND DATE

>

○ LANGUAGE

>

○ FILTER

>

○ ALARM

>

○ ADVANCED USER

>

Settings

TEMPERATURE

18

°C

OK?

○ HEATING ELEMENT ON/OFF

>

Under the SETTINGS menu item, you can adapt the system as you want.

DAY / WEEK SETTINGS

○ MONDAY

● **TUESDAY**

OK?

○ WEDNESDAY

○ THURSDAY

○ FRIDAY

○ SATURDAY

○ SUNDAY

Temperature

Here you set the temperature for the air that enters the building. We recommend adjusting the temperature to max 18° so that the air is mixed optimally with the air already in the building.

TUESDAY

1

08:00-16:00

MIN

16°

✓

2

16:00-18:00

NORMAL

18°

✓

3

18:00-19:00

MAX

16°

✗

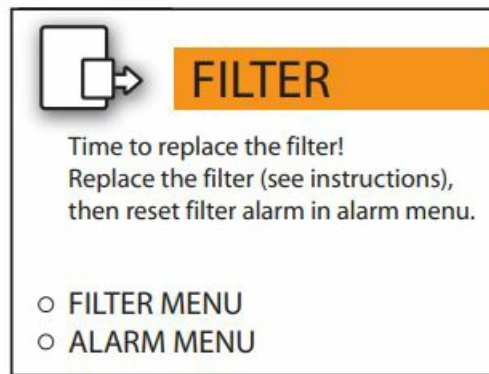
4

19:00-24:00

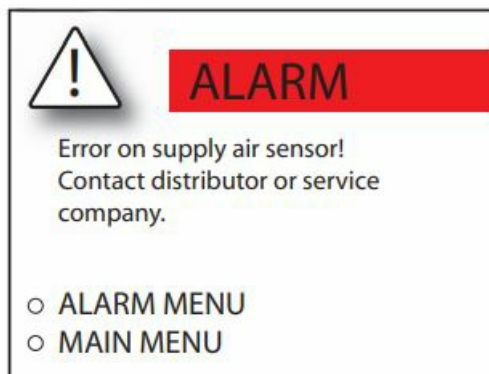
NORMAL

18°

✓



The programming of the timer begins by selecting the day. A new menu screen appears each day at time intervals. Adjust the start and stop times for each interval and then adjust the desired speed and temperature. To activate the interval, select a green tick. A red cross means that the interval is not activated. If necessary, then select another interval and repeat the procedure.



NB! The following rules apply to the programming: A time interval with a higher number can never be started before a previous one has. The stop time can never appear before the start time. repeat the procedure for other days. When the timer is active, this symbol is displayed when the display enters idle mode. If there is no new time interval registered after return to the setting that was previously active.

Information and alarm

Filter

indicator 8 lights up and an information text appears. Follow the instructions in the text menu. The yellow indicator will remain lit until the

Alarm

If a problem occurs in the operation of the ventilation unit, an alarm will be triggered. The red indicator 9 lights up and information text appears in the display. Follow the instructions in the text. When the error has been corrected, the alarm will be reset in the alarm menu. The red indicator will stay lit until the error has been corrected.

 <p>FLEXIT CI 600</p> <p>CI 600</p> <p> • Monteringsvejledning/Installationsanleitung • Monteringsvejledning/Installationsanleitung • Monteringsvejledning/Installationsanleitung • Monteringsvejledning/Installationsanleitung • Monteringsvejledning/Installationsanleitung </p>	<p><u>FLEXIT CI 600 Control Panel</u> [pdf] Installation Guide CI 600, CI 600 Control Panel, Control Panel, Panel</p>
--	---

References

-  [Bedre inneklima - Flexit](#)
- [User Manual](#)

[Manuals+.](#) [Privacy Policy](#)