

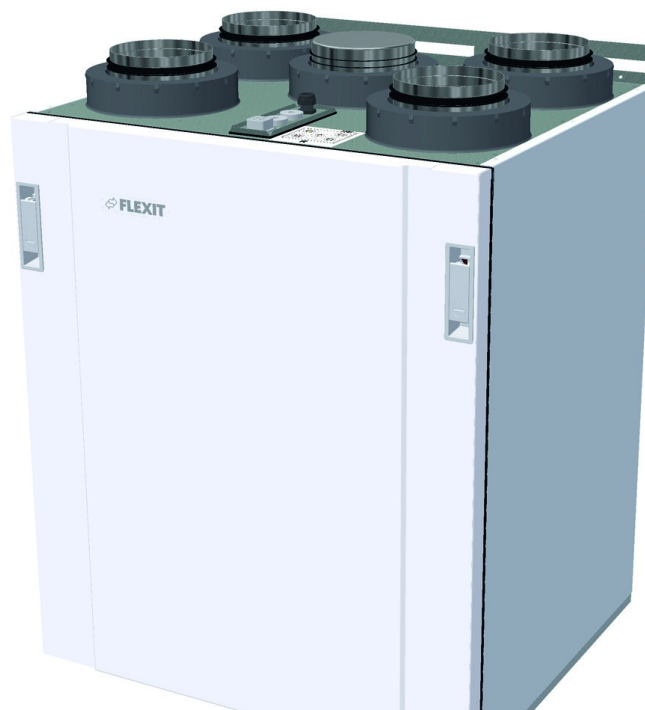


## FLEXIT 800110 Air Handling Unit and Automation User Guide

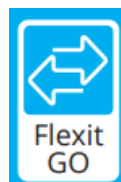
[Home](#) » [FLEXIT](#) » FLEXIT 800110 Air Handling Unit and Automation User Guide 



115702-05  
2023-05



Nordic S2/S3



## QUICK GUIDE

### Air handling unit and automation

#### Contents

- [1 System description](#)
- [2 Control](#)
- [3 Consequences of incorrect operation](#)
- [4 Maintenance](#)
- [5 Documentation](#)
- [6 Documents / Resources](#)
  - [6.1 References](#)
- [7 Related Posts](#)

## System description

### The unit provides ventilation in the home.

It supplies fresh air to living rooms and bedrooms via valves, which are normally located in the ceiling. At the same time used air is extracted from the kitchen, bathroom, toilet and laundry room.

The unit contains a rotating heat exchanger that recovers around 80% of the heat in the extract air and transfers it to the supply air when needed.



## Control

Flexit GO app User manual Flexit GO (117078).



<http://zumotools.flexit.no/scan/171031>

For installer, see start-up guide (116628).



<http://zumotools.flexit.no/scan/170296>

For end user, see start-up guide (116908).



<http://zumotools.flexit.no/scan/170297>



NordicPanel control panel (accessories)  
For installation, see manual (120018).



<http://zumotools.flexit.no/scan/174927>



NordicPanel can be fitted to Nordic units manufactured after 1 October 2022.

Just check for a cable on top of the unit marked "NordicPanel". You can also install NordicPanel on older units manufactured between May 2019 and September 2022. All you need is a cable kit. Contact your nearest dealer for more information.

## Consequences of incorrect operation

**Condensation.** A lot of moisture is often generated in wet rooms as a result of drying clothes, showering, etc. If the outdoor air is cold, it will cool the walls down and the moisture in the indoor air could condense on the unit. If you experience this, you must increase ventilation to Max when a lot of moisture is being generated.

Increased ventilation will ensure that the humid air is extracted from the room and replaced with drier air.

**Filters.** Old and blocked filters provide poor ventilation and can also cause condensation problems.

**New homes.** New homes give off large quantities of moisture and gases from textiles, building materials, paint, etc. This is known as off-gassing and can cause discolouration of walls and surfaces in the home.

Ventilation is therefore very important!



## Maintenance



**DANGER!** The unit must be unplugged from the mains before any maintenance is carried out. Then wait a few minutes for the fans to stop.

### Cleaning the fans

If the fans are to retain their capacity, it is important to ensure that they are clean. This is particularly important for systems that are connected to a kitchen hood. The fans therefore have to be removed for an annual inspection and cleaned if any dirt and grease have built up on the fan blades. Clean the fan blades with methylated spirits on a cloth or brush and, if possible, compressed air.

**NB!** Make sure that the motor is not exposed to water.

#### Function check

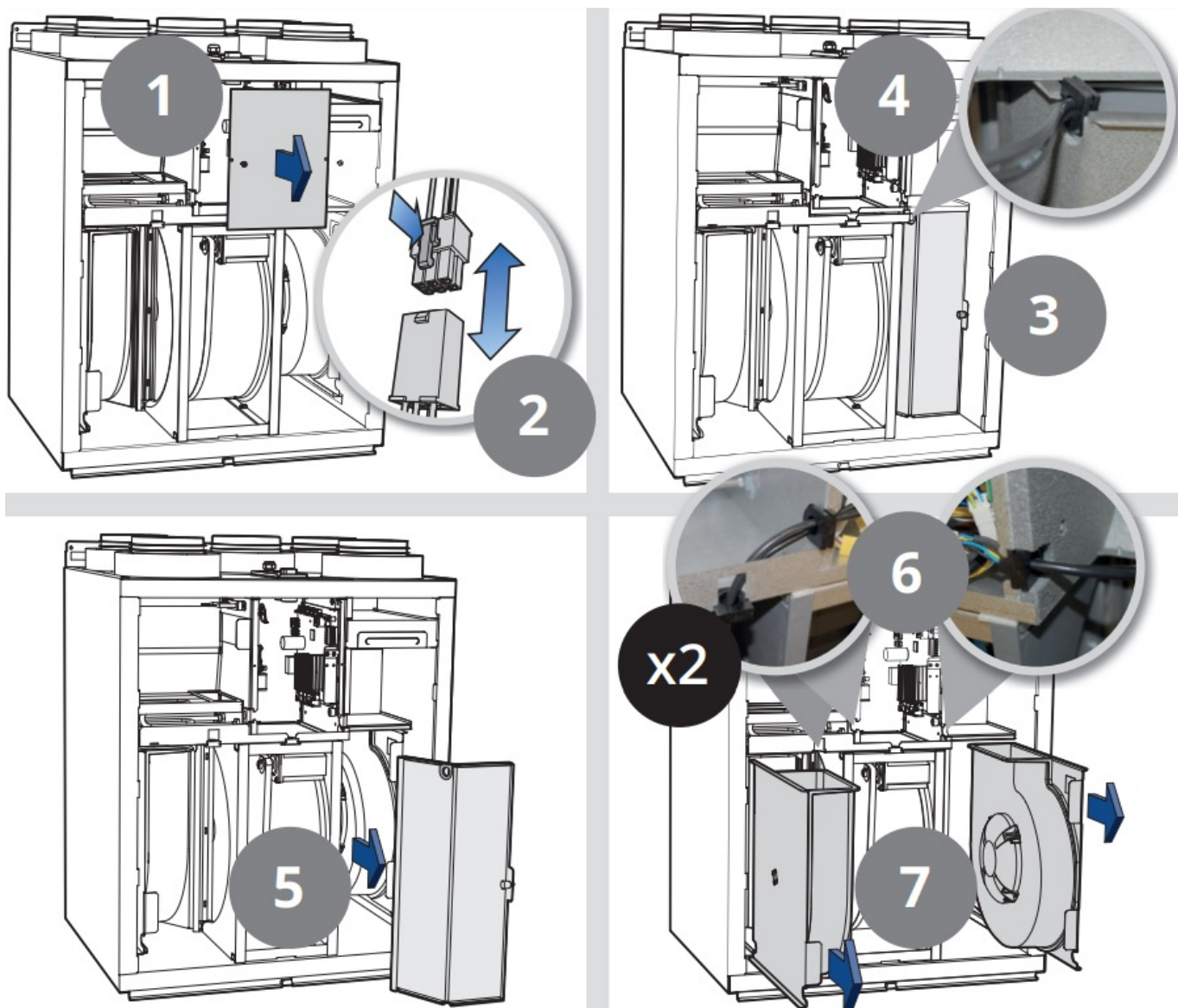
When maintenance is being carried out, the system should be checked to make sure that important parts are working properly:

##### Fans

Set the unit to Max and check that the supply air valves are blowing and the extract air valves are sucking.

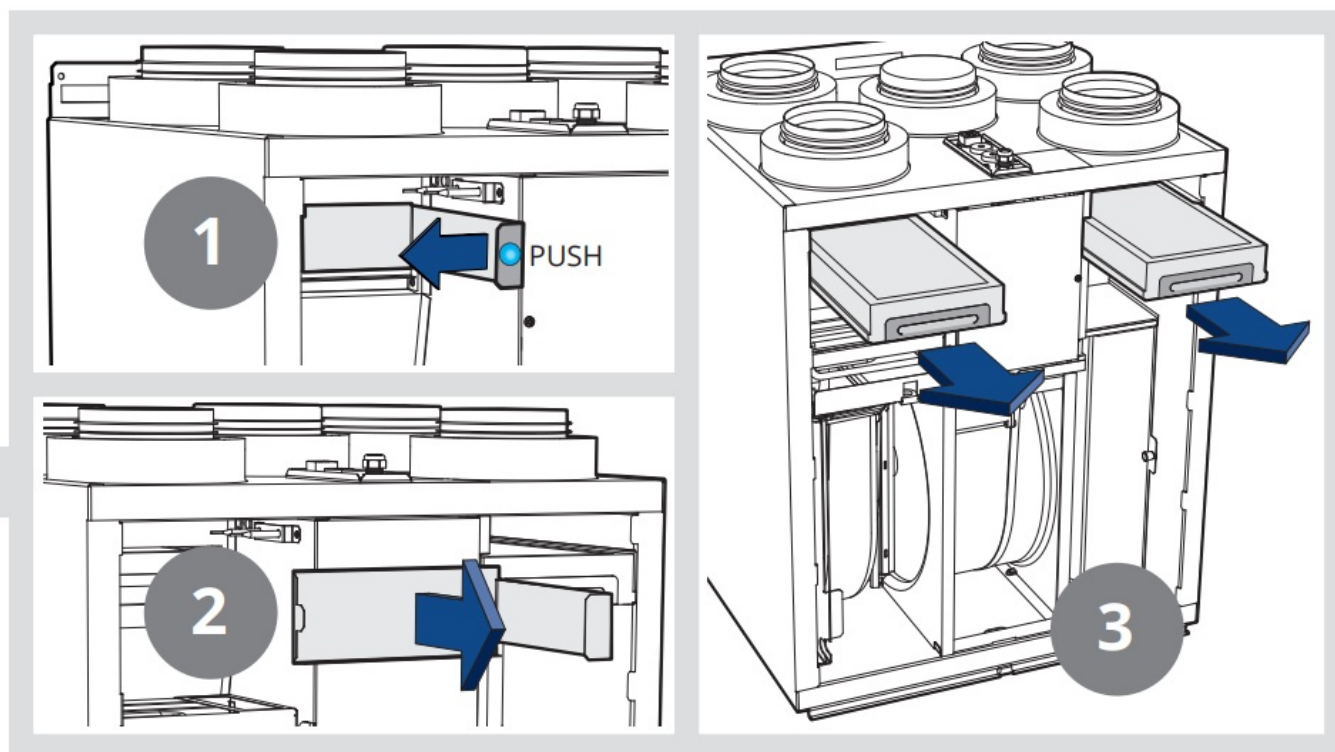
##### Rotor

It is vital that this should rotate when there is a need for heat recovery, e.g. if the outdoor temperature is below 10°C. If the rotor is not working properly, an error signal will appear on the control panel. Also check that the air intake and exhaust are clear and not blocked by leaves and debris.



### Changing the filters

Depending on how dusty the environment is, the filters will gradually become blocked and let less air through. The filters therefore have to be changed at least once a year (usually in the autumn).



Both filters (both supply air and exhaust air filter) should be changed at the same time.

## Documentation

For more information see the user manual and installation instructions supplied with the product.

They can also be downloaded from [www.flexit.com](http://www.flexit.com).

Keep the projection documents, including the ventilation drawings, in a safe place.



The product is listed in the database for building products that can be used in Nordic Swan Ecolabelled buildings.

Flexit participates in the ECP programme for RAHU.

Check ongoing validity of certificate:

[www.eurovent-certification.com](http://www.eurovent-certification.com)




Flexit AS, Moseveien 8, N-1870 Ørje

[www.flexit.com](http://www.flexit.com)

## Documents / Resources



	<p><b><a href="#">FLEXIT 800110 Air Handling Unit and Automation</a></b> [pdf] User Guide        800110, 800111, 800112, 800113, 800120, 800121, 800122, 800123, 800110 Air Handling Unit and Automation, Air Handling Unit and Automation, Handling Unit and Automation, Unit and Automation, Automation</p>
--	---

## References

- [🌐 Better indoor climate - Flexit](#)
- [🏠 Bedre inneklima - Flexit](#)
- [🌐 Bättre inneklimat - Flexit](#)

Manuals+.