



# Flex Radio FLEX-6000 Series Mestro Control Console User Guide

[Home](#) » [Flex Radio](#) » Flex Radio FLEX-6000 Series Mestro Control Console User Guide 

## Contents

- [1 Flex Radio FLEX-6000 Series Mestro Control Console](#)
- [2 Product Information](#)
- [3 Product Usage Instructions](#)
- [4 Package Includes](#)
- [5 Instructions](#)
- [6 Documents / Resources](#)
- [7 Related Posts](#)



**Flex Radio FLEX-6000 Series Mestro Control Console**



## Product Information

The Remote On/Off Kit is designed for use with the FLEX-6000 Series Radios. It includes the following components:

- 1 Kasa Smart Wi-Fi Plug Lite
- 1 Digital Logger AC-powered relay
- 1 RCA Cable

## Product Usage Instructions

1. Download the Kasa application from the iOS or Android App Store.
2. Plug in the Kasa Smart Plug to a 120 Vac outlet.
3. Follow the Kasa setup instructions on the iOS or Android application.
4. Name the plug "FlexRadio Remote On" or any other easily recognizable name.
5. Set the Digital Logger switch to the Reset state.
6. Plug the RCA cable into the REM ON input on the back of the radio.
7. Enable remote on in the settings menu of the radio. Go to Settings/Radio Setup and change Remote On to Enabled.
8. Now, when the Kasa switch is triggered on/off, it will boot/shutdown the radio.

For additional radio information, please refer to the User Manual at [flexradio.com/downloads](https://flexradio.com/downloads).

Copyright FlexRadio Systems 2019 – Kasa is a trademark of TPLink – App Store is a trademark of Apple – Android & Google Play are trademarks of Google

## Package Includes

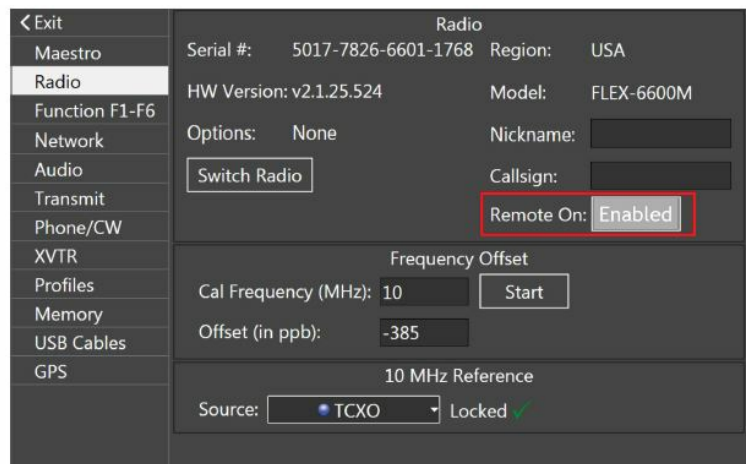
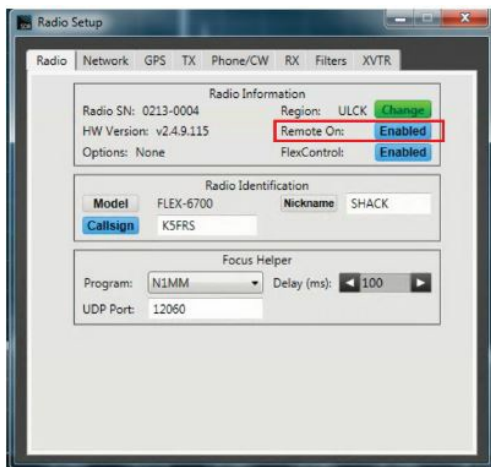
- Kasa Smart Wi-Fi Plug Lite
- 1 Digital Logger AC powered relay
- 1 RCA Cable

## Instructions

1. Download Kasa application from iOS or Android App Store.



2. Plug in Kasa Smart Plug to a 120 Vac outlet
3. Follow Kasa setup instructions on iOS or Android application.
  - Name the plug “FlexRadio Remote On” or another name easily recognizable.
4. Set Digital Logger switch to the “Reset” state.
5. Plug the RCA into “REM ON” input on the back of the radio.
6. Enable remote on in the settings menu of the radio.
  - Settings/Radio Setup – Remote On: Change to “Enabled”.

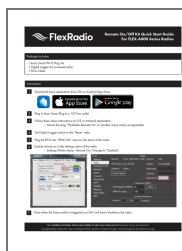


7. Now when the Kasa switch is triggered on/off it will boot/shutdown the radio.

**For Additional Radio Information Refer to the User Manual at: [flexradio.com/downloads](https://flexradio.com/downloads)**

Copyright FlexRadio Systems 2019 – Kasa is a trademark of TP-Link – App Store is a trademark of Apple – Android & Google Play are trademarks of Google.

## Documents / Resources



[Flex Radio FLEX-6000 Series Mestro Control Console](#) [pdf] User Guide  
FLEX-6000 Series, Mestro Control Console