



# FLAT SX Series Auto-Adjusting Table Bases Instruction Manual

[Home](#) » [FLAT](#) » FLAT SX Series Auto-Adjusting Table Bases Instruction Manual 

## Contents

- [1 FLAT SX Series Auto-Adjusting Table Bases](#)
- [2 Product Information](#)
- [3 Product Usage Instructions](#)
- [4 Package Content](#)
- [5 Installation Instructions](#)
- [6 Documents / Resources](#)
- [7 Related Posts](#)



**FLAT SX Series Auto-Adjusting Table Bases**



## **Product Information**

### **SX Series Assembly Instructions**

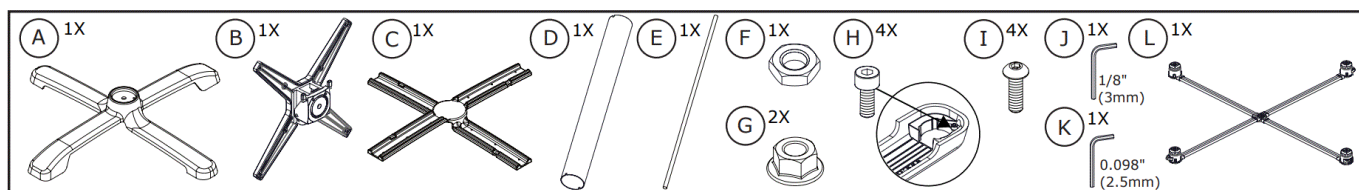
The SX Series is a product that requires assembly. The package includes various parts labeled as A, B, C, D, E, F, G, H, I, J, K, and L. The assembly instructions are provided in this manual.

### **Product Usage Instructions**

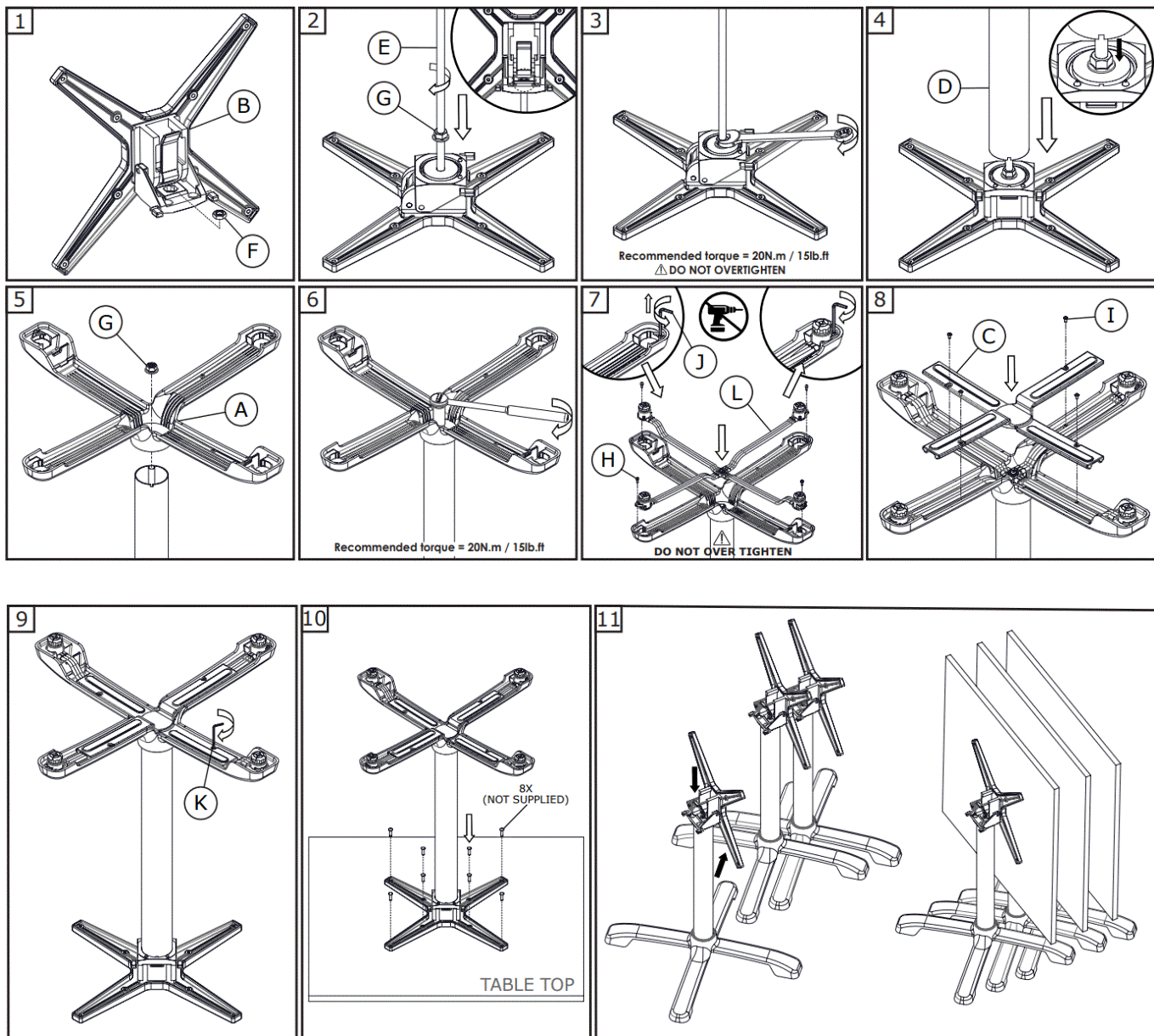
1. Start the assembly by identifying all the parts listed above.
2. Refer to the diagram in the manual and start assembling the parts in the order mentioned.
3. Make sure to use the recommended torque of 20N.m / 15lb.ft for tightening the screws and bolts. Do NOT overtighten.
4. If the package includes post weights, please refer to instruction AI0004 for post weight assembly.
5. Once the assembly is complete, place the table top on the assembled product and secure it in place using screws or bolts.
6. The product is now ready to use. Place it in the desired location and start using it.

For any further assistance or queries, please refer to the product manual or contact our customer support team.

## Package Content

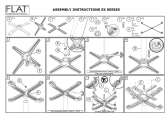


## Installation Instructions



- IF SUPPLIED WITH POST WEIGHTS, REFER TO INSTRUCTION AI0004 FOR POST WEIGHT ASSEMBLY

## Documents / Resources



**[FLAT SX Series Auto-Adjusting Table Bases](#)** [pdf] Instruction Manual  
SX Series, SX Series Auto-Adjusting Table Bases, Auto-Adjusting Table Bases, Adjusting Table Bases, Table Bases, Bases

**Manuals+.**