



FLASHPOINT F220509AR04-F FlashBack Senior on Camera Speedflash User Guide

[Home](#) » [FLASHPOINT](#) » FLASHPOINT F220509AR04-F FlashBack Senior on Camera Speedflash User Guide 

FLASHPOINT

F220509AR04-F FlashBack Senior on Camera Speedflash
User Guide



Contents

- [1 A Taste of the Past in a Flash!](#)
- [2 Features](#)
- [3 Safety Instructions](#)
- [4 Identification of Parts](#)
- [5 Power Adjusting Instruction](#)
- [6 Led Light Key](#)
- [7 Product Contents](#)
- [8 Operation Instruction](#)
- [9 Aperture Guide/M Manual Flash Mode](#)
- [10 An Auto Flash Mode](#)
- [11 Optical Control Mode](#)
- [12 Technical Data](#)
- [13 One-Year Flashpoint Limited Warranty](#)
- [14 Documents / Resources](#)
- [15 Related Posts](#)

A Taste of the Past in a Flash!

The Flashpoint FlashBack Senior Speedflash is the miniaturized and foldable version of the original popular on-camera Manual/Auto Speedlight, introduced way back in the '70s. Elements, like the bowl reflector, harken back to an age when electronic flash was just a dream. You own a piece of history with a touch of modernism.

The flash can be used in Manual or Automatic Modes. Automation is also a throwback to the days when camera TTL was not yet invented, and thyristor sensors carefully placed on the flash did the trick to provide accurate exposures.

The silver fan reflector is the key to flash quality, featuring a true round retractable flash tube in the center. The retro fan shape that opens and closes in a circular 9-blade silver dish is reminiscent of the days when reflectors ruled. The light delivers 150 dependable full power pops at GN46 output, plus 7 user-controlled output levels in Manual Mode. Auto takes the driver's seat with flash exposure when the photographer sets the appropriate f-stop on the camera's lens. A handy calculator scale wheel displays the range of the flash according to an ISO ratio, distance, and subject matter as well as the corresponding aperture.

Rechargeable Lithium-Ion cells are the built-in power solution for battery freedom, assuring dependable, uninterrupted flash photography.

The Flashpoint FlashBack Senior Speedflash single-pin hot shoe trigger assures compatibility with ANY camera with a hot shoe or a Sync post for triggering. Not just the traditional list of popular current craze cameras, but ALL cameras with a live hot shoe or a really old-school Sync Post.

Since the automation is f-stop related to the flash body – through a sensor on the flash body, not a TTL camera linked – once the lens is set to the suggested displayed f-stop, exposure is accurate and rich.

The flash DOES NOT talk to the camera or visa-versa.

Like all the FlashBack family invokes, we invite the user to relive the past and embrace the feeling, “we’ve been here before ...”.

Pay attention to the rules; you too can be a FlashBack.

Features

- Opens from a mere 5×2.5×2 inch clam shell to a full size camera flash.
- Perfect for the Deja Vu photographer with a miniature camera.
- Slips conveniently in pockets or shoulder bags.
- Excellent output at GN 46ft / 14m @ISO 100.
- Bring back the memories of a non-TTL Auto strobe with user-controlled Manual flash output.
- Set the GN wheel scale once, and the distant chart guides the way to perfect snaps every time.

- Rechargeable Lithium-Ion cells are the built-in power solution for battery freedom.
- Full power recycle time of fewer than 3 seconds.
- Enough energy reserve for 150 full power pops.
- Auto exposure for ALL brands of Cameras! Canon, Nikon, Sony, Fujifilm, Panasonic, Olympus, or Pentax – Exacta, Contax, Leica, Konica, Linhof except a Brownie (of course)...
- AutoSleep functions to preserve battery reserves.
- Multipurpose Power Switch for Faster Navigation from Auto to Manual.
- Fixed a 28mm circular flash tube to spread the light gently and evenly in the circular fan bowl reflector.
- Regular and Intelligent Optical Receiver Modes.
- The output dial directly serves all power settings.
- Great for on and off-camera use.
- Twist and Firm Hot Shoe Foot Lock.

Safety Instructions

Always keep this product dry. Do not use it in the rain or in damp conditions.

Keep out of reach of children.

Take care when pushing the flash tube back into the socket. Gloves may aid the process and protect the glass from oily residue.

Do not disassemble. Should repairs become necessary, this product must be sent to an authorized maintenance center.

Stop using this product if it breaks open due to impact or force. Electric shock may occur if you touch the internal parts.

Do not use the flash unit in the presence of flammable gases, chemicals, and ignitable materials. These materials may be sensitive to the strong light or electromagnetic interference emitted from this flash unit in certain circumstances.

Do not leave or store the flash unit if the ambient temperature reaches over 120F/50°C (e.g. in a sun-bathed automobile). Electronic parts may be permanently damaged.

Do not insert metal parts into any lighting equipment.

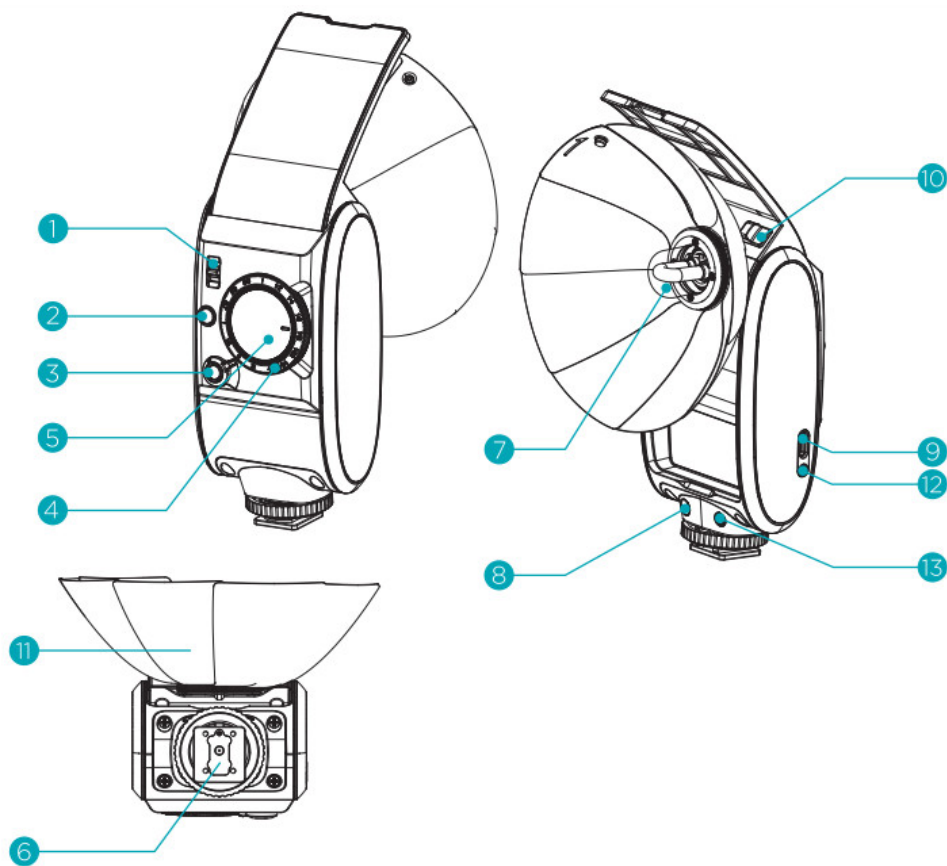
Do not touch the electrical contacts on the strobe or battery or contact them with any conductive materials. Do not mix aged or battery type in the flash.

Do not fire the flash directly into the eyes, especially those of babies, within short distances. Visual impairment may occur.

Do not use any batteries, power sources, or accessories not specified in this instruction manual.

In case of abnormal functioning, sparks, excessive heat, flames, or smoke, immediately power the unit off, if safely possible. Has it checked by an authorized technician?

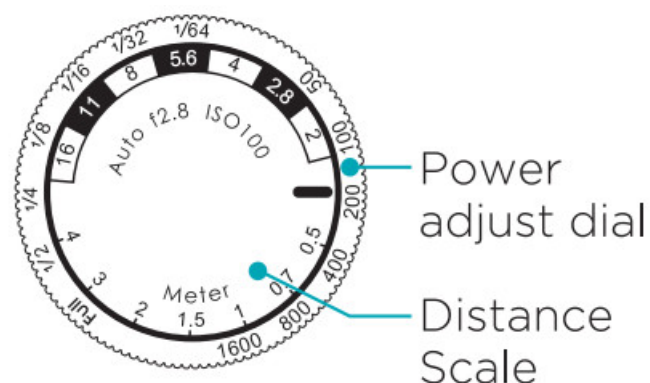
Identification of Parts



1. OFF/SI/S2 button	8. Optical sensor
2. TEST button/Recycle indicator	9. USB-C charging port
3. OFF/M/A dial (power off/manual flash/auto flash)	10. Flashtube Switch (Red)
4. Power adjust dial	11. Metal reflector
5. Distance Scale	12. SYNC port
6. Hotshoe	13. Auto light receptor
7. Flash tube	

Power Adjusting Instruction

The power adjust dial has 7 user selectable power setting levels. The distance scale revolves freely. Move the distance scale to mate with the ISO setting and the exact aperture for accurate exposures is displayed next to the power settings.



Led Light Key

Switch the OFF/M/A dial to M manual flash mode or A auto flash mode.

1. RED indicates that the flash is recycling.
2. GREEN indicates that the flash is completely ready for firing.
3. SLOW BLINKING RED indicates a low battery condition. Time to recharge the Internal Lithium battery through the USB charging port.
4. RAPID RED BLINKING indicates that the flash is overheated.
5. NO LED LIGHT is an indication of completely exhausted batteries.

Recharge immediately!

Switch the OFF/M/A dial to OFF mode.

1. RED indicates that the Lithium battery is charging. The charge is not complete.
2. GREEN indicates a completely charged battery.
3. RAPID RED BLINKING indicates an overheat condition and the charging has stopped. The recommended temperature for charging is 32°F/0°C to 140°F/60°C.

Battery Status Check Procedure.

With the Power Switch in the OFF position, short press the Recycle Status Button and note these conditions:

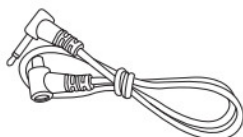
1. The recycle indicator turns green and blinks four times, 75%-100% battery level.
2. The recycle indicator turns to green and blinks four times, 50%-75% battery level.
3. The recycle indicator turns green and blinks four times, 25%-50% battery level.
4. The recycle indicator turns green and blinks four times, 0%-25% battery level, please charge the battery immediately.

Note: When the flash tube is pressed down, switch the OFF/M/A to M or A mode, and the recycle indicator is constant on red. When the flash tube pops up, switch the OFF/M/A to M or A mode, and the recycle indicator is constant on the green.

Product Contents



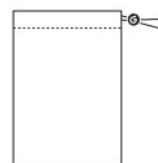
Flashpoint FlashBack
Senior Speedflash



Triggering
Cable



Charging
Cable



Storage
Bag



Instruction
Manual

Power/ISO/ Aperture Settings Instruction

ISO Values	50	100	200	400	800	1600
Flash Power Level	Full	1/2	1/4	1/8	1/16	1/32 1/64
Aperture Values	2	3.	4	6.	8	1116
Best Shooting Distance	1.6'/0.5m	2.3'/0.7m	3.311m	51/1.5m	6.5'/2m	10'/3m 13/4m

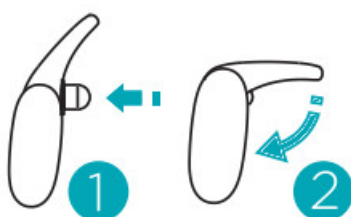
Operation Instruction

Power On

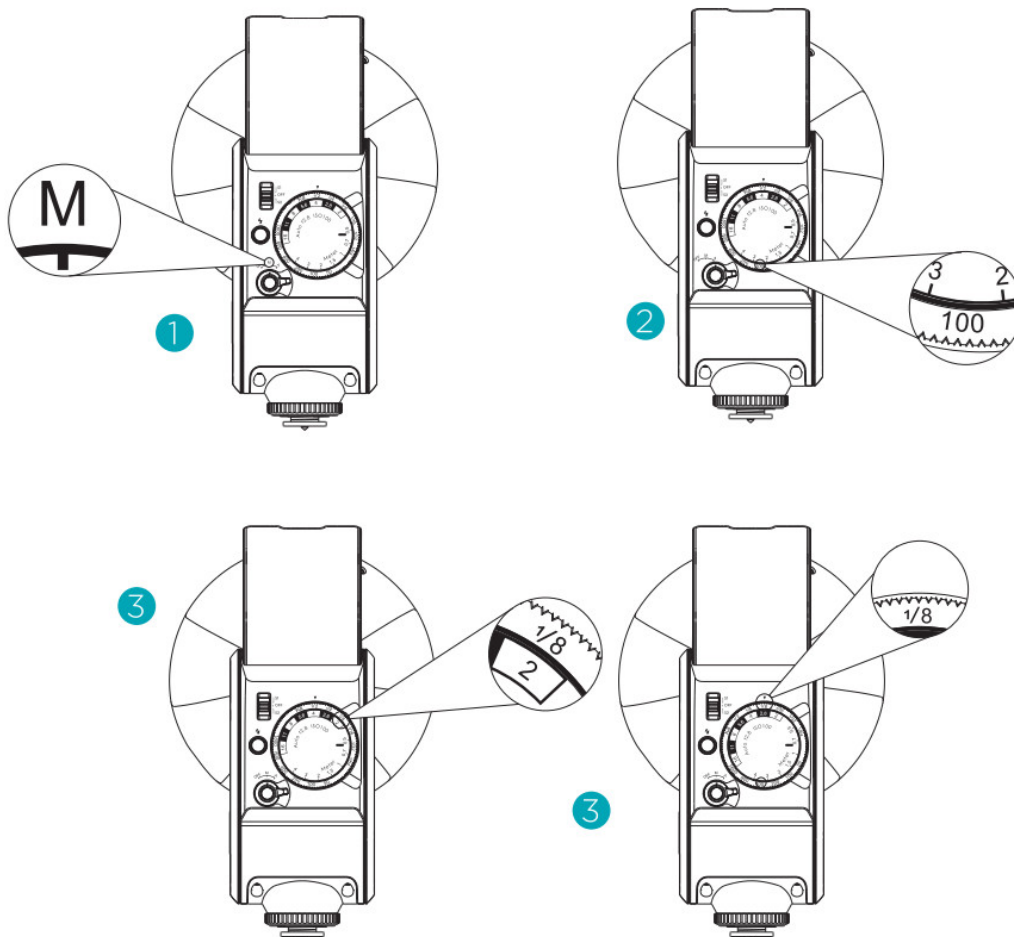
Open the back cover, push the red switch to pop up the flash tube, then unfold the metal reflector. Turn the OFF/M/A dial to M manual flash mode or A auto flash mode, The LED glow to indicate that the flash is ON. Fold the metal reflector, press the flash tube down and close the back cover. Turn the OFF/M/A dial to OFF mode, the device is powered off Note:

Insert the flash in the hot shoe of the camera before powering it ON.

Note: Please press down the flash tube before folding.



1. Turn the OFF/M/A dial to M manual flash mode.
2. According to the ISO value of the camera, find the ISO value on the power adjust dial. Then turn the Distance Scale to make the distance value aligned at the ISO value according to the current shooting distance.
3. The flash power is the value on the dial shown at the aperture value. The flash power is 1/8. Turn the power adjust dial to your selected to power the OUTPUT arrow, then the flash will provide proper exposure that matches the lens aperture.



Aperture Guide/M Manual Flash Mode

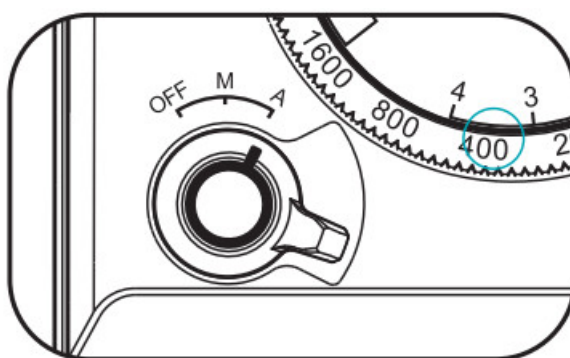
Aperture GN Distance	2	3.	4	6.	8	11	16
56	28	20.	14	10.	7	5.	4.
40.	20.	14	10.	7	5.	4.	3.
28	14	10.	7	5.	4.	3.	2.
20.	10.	7	5.	4.	3.	2.	1.
14	7	5.	4.	3.	2.	1.	0.9
9,9	4,9	4.	3.	2.	1.	0.9	0.7
7	4.	3.	2.	1.	0.9	0.7	0.5
5.	3.	2.	1.	0.9	0.7	0.5	0.4
4.	2.	1.	0.9	0.7	0.5	0.4	0.3
3.	1.	0.9	0.7	0.5	0.4	0.3	0.2
2.	0.9	0.7	0.5	0.4	0.3	0.2	
1.	0.7	0.5	0.4	0.3	0.2		
0.9	0.5	0.4	0.3	0.2			

ISO Flash power GN	50	100	200	400	800	1600
1	10.	14	20.	28	40.	56
1/2	7	10.	14	20.	28	40.
1/4	5.	7	10.	14	20.	28
1/8	4.	5.	7	10.	14	20.
1/16	3.	4.	5.	7	10.	14
1/32	2.	3.	4.	5.	7	10.
1/64	1.	2.	3.	4.	5.	7

An Auto Flash Mode

Turn the OFF/M/A dial to auto flash mode.

The Distance/ Aperture calculator is referenced to 100 ISO at f2.8.



ISO	50	100	200	400	800	1600
Aperture	2	3.	4	6.	8	11
Distance	Maximum 13ft / 4m					

Note: Long telephoto lenses are not advised to be used in Auto Flash Mode.

Optical Control Mode

S1 optical receiver sensor

The S1 optical receiver sensor is available in M manual flash mode. Push the OFF/S1/S2 button to S1, and the flash functions as an optical S1 secondary flash. With this function, the flash will fire synchronously when any flash fires, the same effect as that by using radio triggers. The FlashBack is useful for multiple flash lighting setups in S1 mode.

S2 optical receiver sensor

The S2 optical receiver sensor is available in M manual flash mode. Push the OFF/S1/S2 button to S2, and the flash functions as an optical S2 secondary flash for triggers flash from the TTL unit. This is useful when TTL Speedlites have a pre-flash function, the flash will ignore a single “preflash” from the main flash and will only fire in response to the second, actual flash from the main unit. The FlashBack is useful for multiple flash lighting setups

in S2 mode.

Note: S1/S2 optical is only available in M manual flash mode.

Technical Data

Model	Flashpoint FlashBack Senior
GN(1/1 level)	46 feet/14m@ISO 100
Lithium battery	3.7 1700mAh
Input Parameter	5V 2A
Flash power	7 levels: 1/1-1/64
CCT	6000K±200K
Focal length	28mm(fixed value)
Compatible cameras	All Cameras with hot shoes. including Fujifilm, Canon, Nikon, Olympus, Sony
Panel display	Power: full, 1/2, 1/4, 1/8, 1/16, 1/32, 1/64 Aperture: F2-16 Distance: 1.6'/0.5m, 2.3'/0.7m, 3.3r/1m, 5'/1.5m, 6.51/2m, 1073m, 1374m Auto f2.8 150100 (default value in A auto flash mode)
Optical flash	S1 optical receiver/52 optical Intelligent receiver
Working environment temperature	146F/-10°C to 122°F/50°C
Recycle time(Max. level)	<3S
Full power flash times(1/1 level)	150 times
Battery charging temperature range	32°F/0°C to 140°F/60°C
SYNC	Hotshoe, SYNC cable
Dimension	3.3×4.5×6.9" / 84x114x176mm
Net weight	8.0oz / 227g

*Product design and specifications are subject to change without notice.

FCC Statement

This device complies with part 15 of the FCC Rules. Operation is subject to the following two conditions:

(1) This device may not cause harmful interference, and (2) this device must accept any interference received, including interference that may cause undesired operation. Any Changes or modifications not expressly approved by the party responsible for compliance could void the user's authority to operate the equipment.

NOTE: This equipment has been tested and found to comply with the limits for a Class B digital device, pursuant to part 15 of the FCC Rules. These limits are designed to provide reasonable protection against harmful interference in a residential installation. This equipment generates uses and can radiate radio frequency energy and, if not installed and used in accordance with the instructions, may cause harmful interference to radio communications. However, there is no guarantee that interference will not occur in a particular installation.

If this equipment does cause harmful interference to radio or television reception, which can be determined by turning the equipment off and on, the user is encouraged to try to correct the interference by one or more of the

following measures:

- Reorient or relocate the receiving antenna.
- Increase the separation between the equipment and receiver.
- Connect the equipment to an outlet on a circuit different from that to which the receiver is connected.
- Consult the dealer or an experienced radio/ TV technician for help.

One-Year Flashpoint Limited Warranty

Flashpoint warrants to the original purchaser that your Flashpoint product shall be free from defects in material and workmanship for the period of one (1) year from the date of purchase (or delivery as may be required in certain jurisdictions), or thirty (30) days after replacement, whichever comes later.

Flashpoint's entire liability and your exclusive remedy for any breach of warranty shall be, at Flashpoint's option, to repair or replace the hardware, provided that the hardware is returned to the point of purchase or such other place as Flashpoint may direct with a copy of the sales receipt or dated itemized receipt. Flashpoint may, at its option, replace your product, offer to provide a functionally equivalent product, or repair any product with new, refurbished or used parts as long as such parts are in compliance with the product's technical specifications.

Any replacement hardware product will be warranted for the remainder of the original warranty period or thirty (30) days, whichever is longer, or for any additional period of time that may be applicable in your jurisdiction.

If the product has been discontinued, the warranty provider reserves the right to replace it with a model of equivalent quality and function.

This warranty does not cover problems or damage resulting from accident, abuse, misapplication, or any unauthorized repair, modification or disassembly, improper operation or maintenance, normal wear and tear, or usage not in accordance with product instructions or connection to the improper voltage supply, use of consumables, such as replacement batteries, not supplied by Flashpoint, except where such restriction is prohibited by applicable law.

Except where prohibited by applicable law, this warranty is nontransferable and is limited to the original purchaser and the country in which the product was purchased. This warranty gives you specific legal rights, and you may also have other rights, including a longer warranty duration that may vary under local laws.

To start a warranty claim contact the Flashpoint Customer Service Department to obtain a return merchandise authorization ("RMA") number, and return the defective product to Flashpoint, along with the RMA number and proof of purchase.

Question about our product line? Need Product Support?

We are proud of our products and celebrate our customers.

We are with you, from product selection to everyday use.

Be secure with your purchase and reach us as you need.



212-647-9300



brands@adorama.com



Adorama Brands,

42 West 18th Street,

New York, NY 10011

You can always contact us at BRANDS@ADORAMA.COM for personal technical support. Our website contains a wide range of Support and FAQ pages with valuable technical assistance.

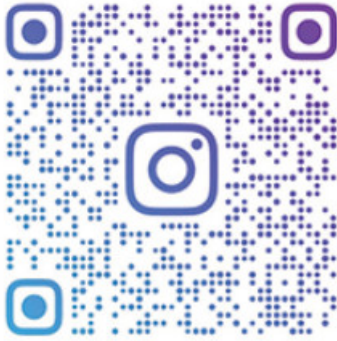
FLASHPOINTLIGHTING

Scan to follow our official Instagram

Flashpoint is a registered trademark of ADORAMA CAMERA.


© 2022 Adorama Camera, Corp.

All Rights Reserved.



WWW.FLASHPOINTLIGHTING.COM

Documents / Resources

	<p>FLASHPOINT F220509AR04-F FlashBack Senior on Camera Speedflash [pdf] User Guide F220509AR04-F FlashBack Senior on Camera Speedflash, F220509AR04-F, FlashBack Senior on Camera Speedflash, Camera Speedflash, Speedflash</p>
---	---

Manuals+