



FLAMMA SIDE W PRO Side Panel with Crystal Window Instruction Manual

[Home](#) » [FLAMMA](#) » FLAMMA SIDE W PRO Side Panel with Crystal Window Instruction Manual



Side panel with Crystal window
Installation and usage instructions
SIDE W SIDE W PRO
SIDE W CARAVANSTORE / XL

Contents

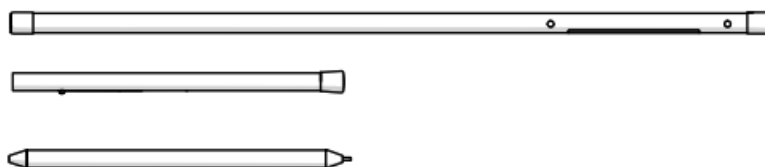
- [1 Fiammaster](#)
- [2 MAINTENANCE INSTRUCTIONS](#)
- [3 Warranty Fiamma](#)
- [4 Documents / Resources](#)
- [5 Related Posts](#)



 Fiammaster

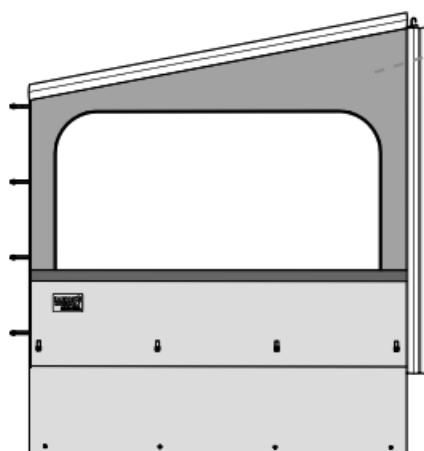
A

1 x



B

1 x



Standard for:

Side W Pro Van

(item No. 07977A01-)

Side W Pro Caravanstore

(item No. 07977-01-)

Side W Pro Caravanstore XL

(item No. 07977B01-)

Standard for:

Side W Caravanstore

(item No. 07978-01-)

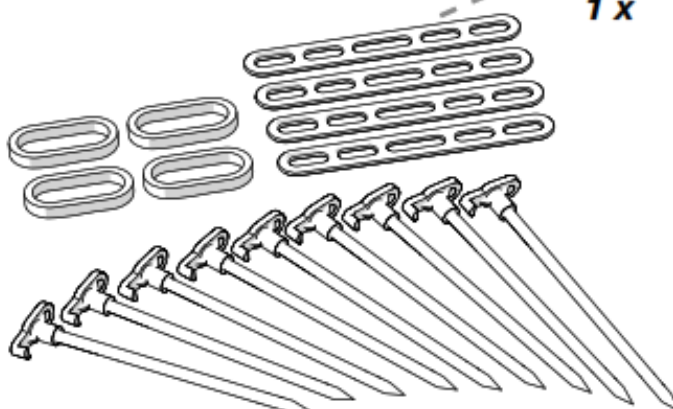
Side W Caravanstore

(item No. 07978A01-)

KIT 98655-604

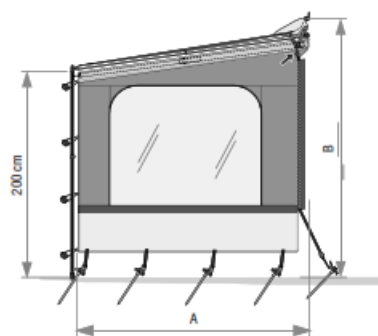
C

1 x

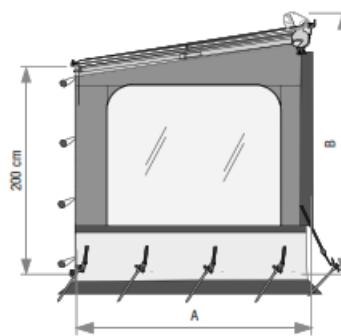


KIT 98655-603

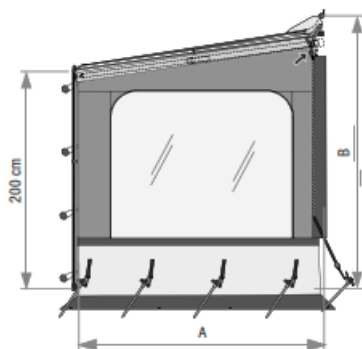





**SIDE W CS
SIDE W CS XL**



SIDE W PRO VAN

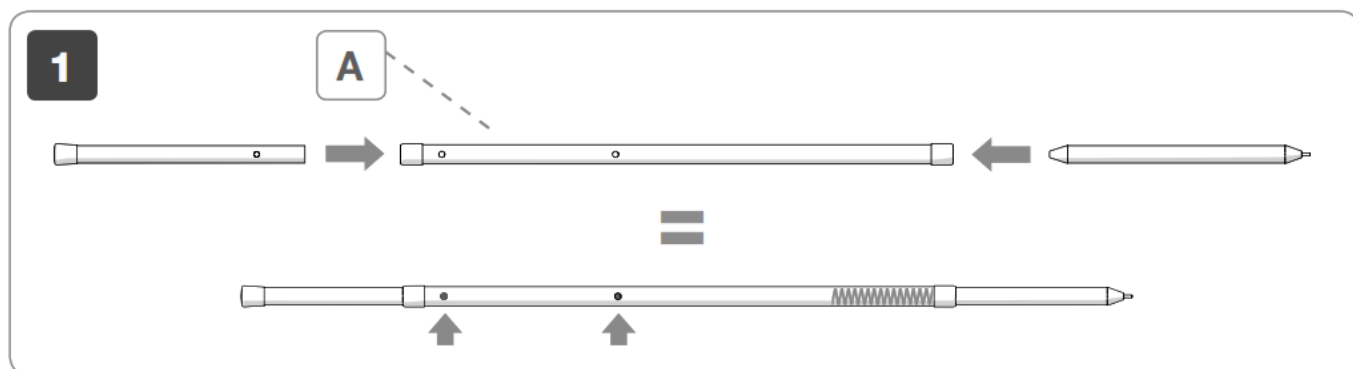


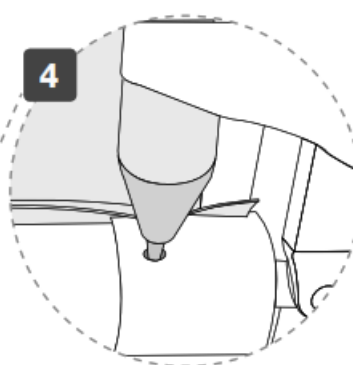
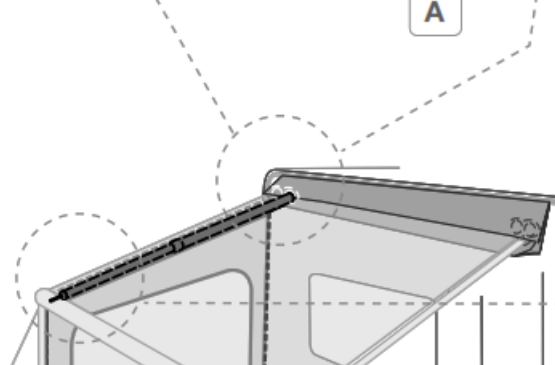
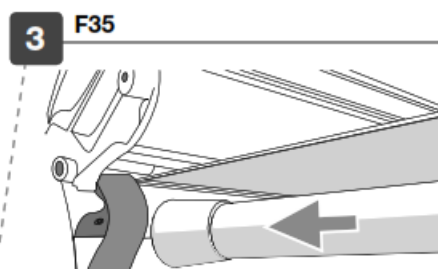
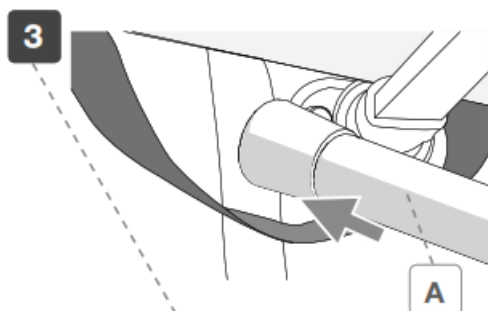
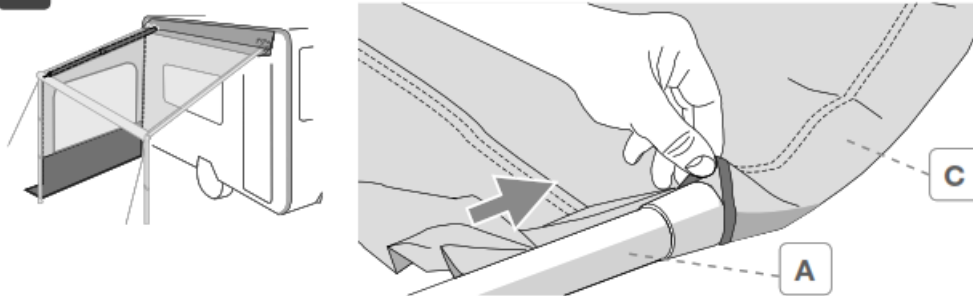
**SIDE W PRO CS
SIDE W PRO CS XL**

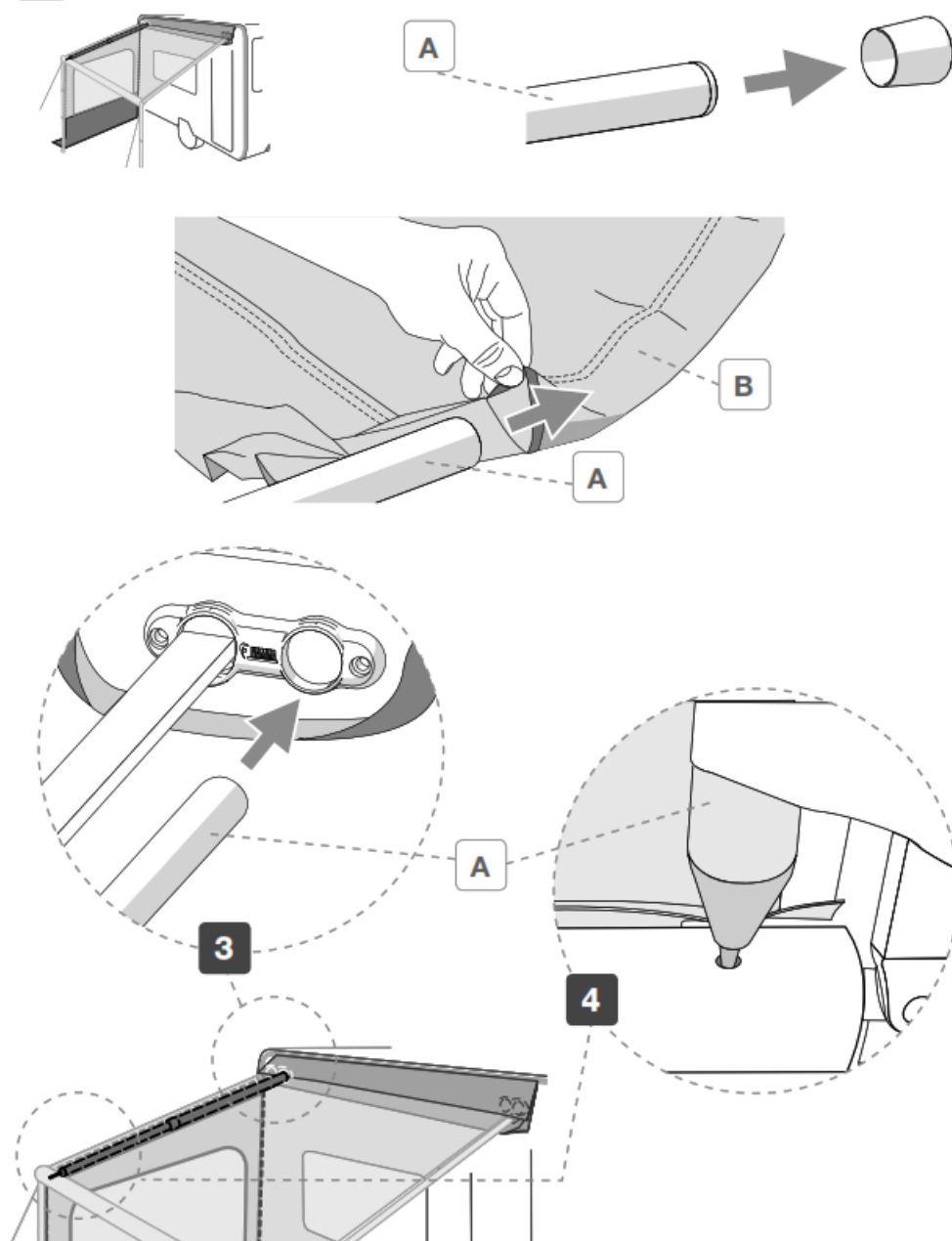
		A	B	
SIDE W CARAVANSTORE / F35	07978-01-	210 cm	240/260 cm	3,9 kg
SIDE W CARAVANSTORE XL	07978A01-	240 cm	240/260 cm	4,2 kg
SIDE W PRO F35 VAN	07977A01-	210 cm	180/220 cm	4,2 kg
SIDE W PRO CARAVANSTORE / F35	07977-01-	210 cm	240/260 cm	4,5 kg
SIDE W PRO CARAVANSTORE XL	07977B01-	240 cm	240/260 cm	4,8 kg

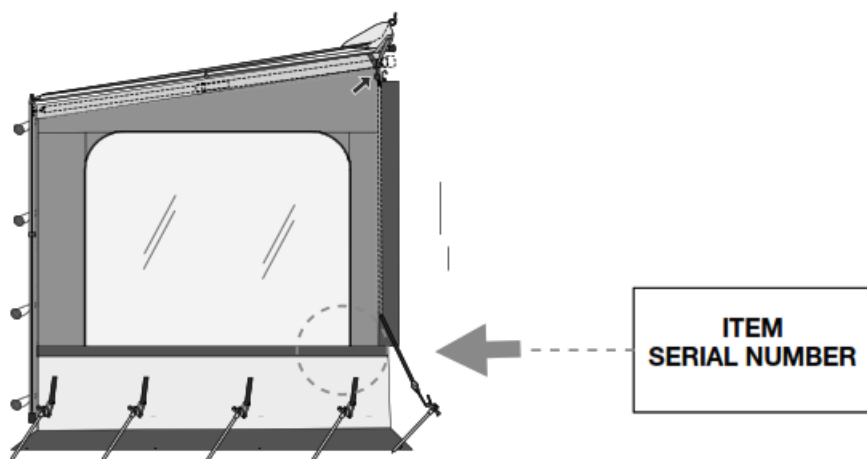
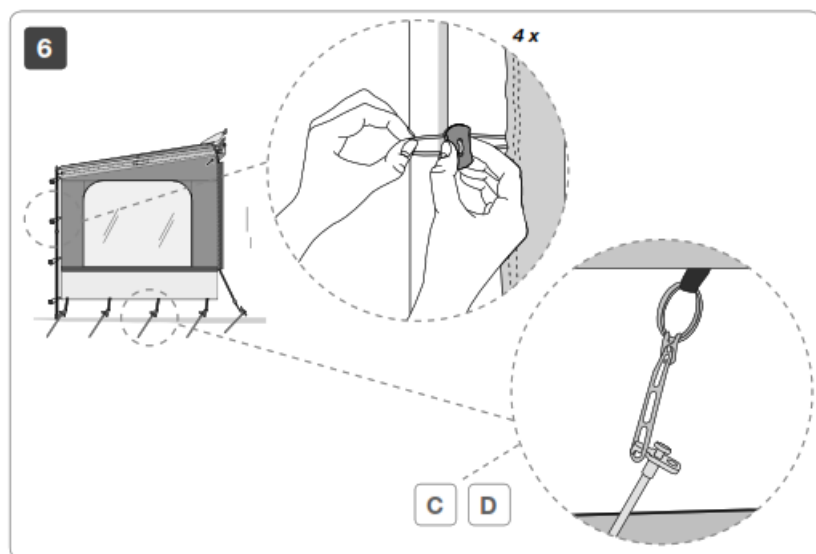
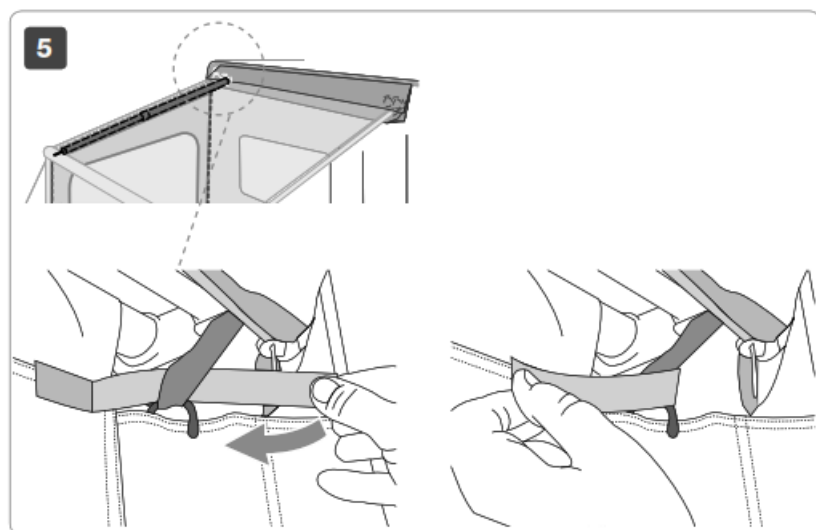
Check that nothing has been damaged or deformed during transport.

In the event of doubts or questions concerning the installation, use or limitations of the product, contact the dealer. We recommend that the installation is carried out by qualified personnel and in compliance with current local regulations.









In case of problems please contact your local dealer indicating the data on the nameplate. Consult our website for spare parts drawing.



Fiamma declines all responsibility for any personal injury and damage to property due to incorrect assembly or use of the product; it is suggested to keep the instructions inside the vehicle.

Keep the original packaging to be used in case of return. The assembly of the product must be carried out according to the assembly instructions: the product must not be modified in any way. All our side panels are made with an high quality standard.

Apart from our strict quality controls, we also have our fabrics continuously controlled by independent institutes to ensure that the fabric is tear resistant, they can hold the weight of water, the colours don't fade and it is resistant against atmospheric agents. To guarantee a perfect quality, the fabrics are waxed or laminated several times.

During this operation, single coloured pigments could move and thus create small bright spots in the material, which are only irregularities that are technically inevitable to avoid, but do not compromise the impermeability of the fabric. Irregularities in weaving (such as knots and thickening) are due to unavoidable manufacturing tolerances and are not grounds for complaint; do not prejudice in any way the qualities of the side panels.

Especially with light fabrics, folds may form that backlight seems dark.

They are irregularities of technically unavoidable materials due to the specific workings.

MAINTENANCE INSTRUCTIONS

Store the side panel only if it is dry and possibly clean. The remaining humidity could cause stains. If you are forced to close it when is still wet, after max. 12 hours reopen it to make it dry.

Most of the dirt is superficial and can be removed with clean water and a cloth or a brush.

If the fabric is very dirty, add some light cleaning detergent (Marseille soap). Any residual detergent on the fabric must be carefully rinsed. Be aware never to use any aggressive chemical substances and never to clean the fabric with a high pressure machine. Windows in transparent PVC: don't use detergents which contain alcohol or solvents. Wash it only with hot water and soft cloth.

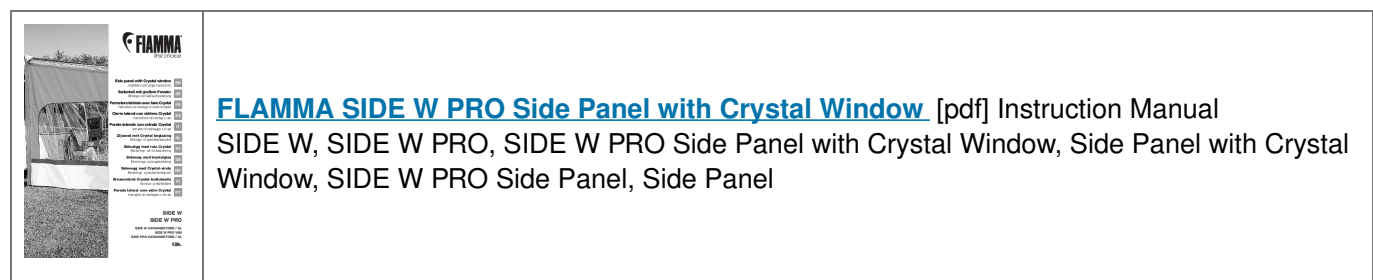
Zippers: Subjected to continuous stress and wear. Open and close gently and slowly without tearing, avoiding excessive effort during fixing to the ground. Keep them sliding using a normal zipper spray.

Warranty Fiamma

In case of defects with regards to materials and manufacturing, the customer is entitled to the warranty in accordance with local laws and regulations of the country in which the product was purchased.



Documents / Resources



Manuals+,