




FLAMMA FM10 Portable 6 Channel Mixing Console Owner's Manual

[Home](#) » [FLAMMA](#) » FLAMMA FM10 Portable 6 Channel Mixing Console Owner's Manual 

FLAMMA

FM10 Portable 6 Channel Mixing Console
Owner's Manual

Contents

- [1 Precautions](#)
- [2 Features](#)
- [3 Lay out](#)
- [4 Connection](#)
- [5 Instructions](#)
- [6 Specifications](#)
- [7 Documents / Resources](#)
- [8 Related Posts](#)

Precautions

Please read carefully before proceeding

Power Supply

Please use power supply with 5V and at least 500mA current value for the unit. Incorrect power supply may cause short-circuit and damage.

Please turn off the power supply if the device is not used for long period.

Important Safety Instructions

1. Read these instructions
2. Keep these instructions
3. Heed all warnings
4. Follow all instructions
5. Do not use this apparatus near water
6. Clean only with a dry cloth
7. Do not install near any ventilation openings. Install in accordance with the manufacturer's instructions

8. Do not install near any heat sources such as radiators, heat registers, stoves or other apparati (including amplifiers) that produce heat
9. Do not defeat the safety purpose of the polarized or grounding-type plug. A polarized plug has two blades with one wider than the other. A grounding type plug has two blades and a third grounding prong. The wide blade of the third prong are provided for your safety. If the provided plug does not fit into your outlet consult an electrician for replacement of the obsolete outlet
10. Protect the power cord from being walked on or pinched particularly at plugs, convenience receptacles, and the point

FCC certification

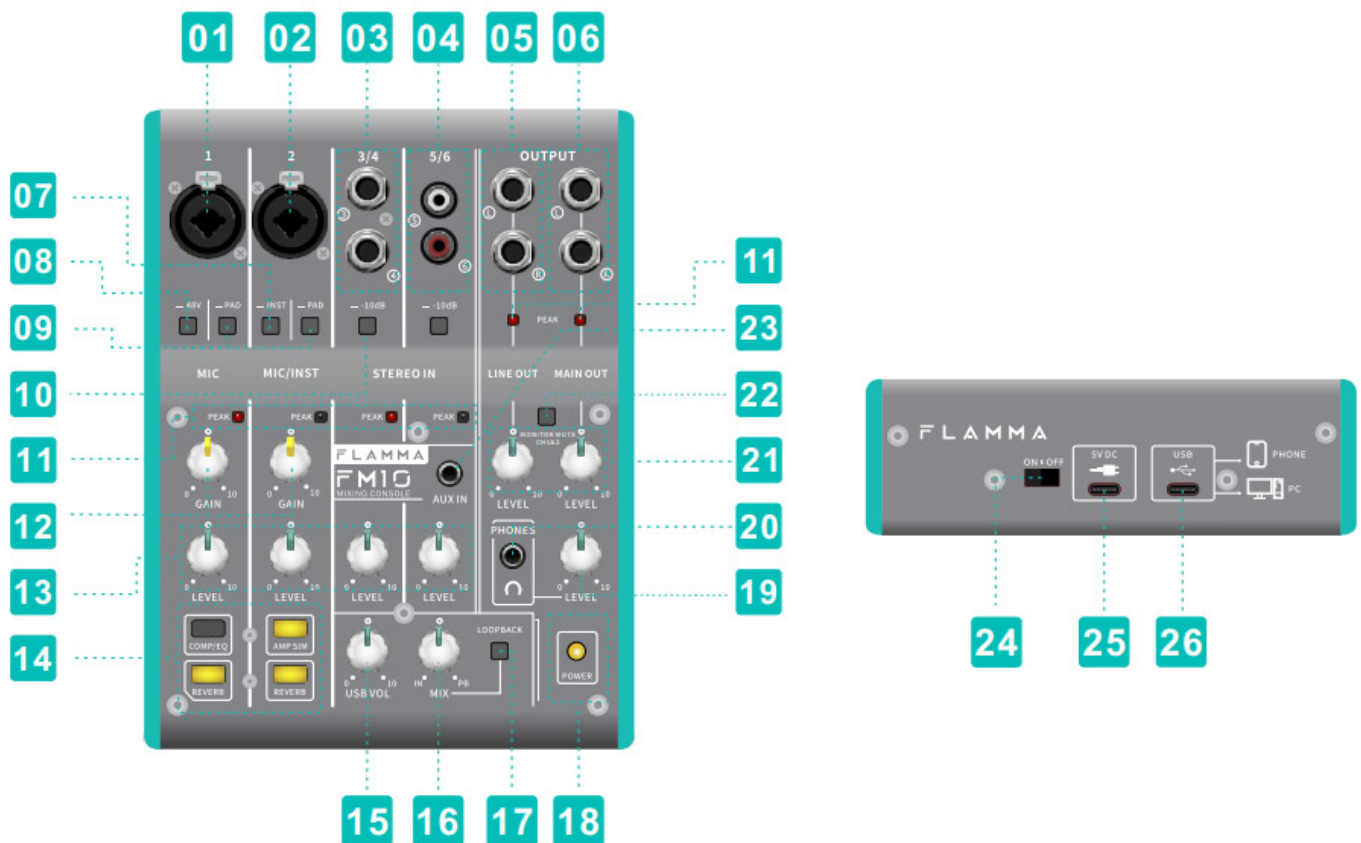
This device complies with Part 15 of the FCC Rules. Operation is subject to the following two conditions:

- This device may not cause harmful interference
- This device must accept any interference received, including interference that may cause undesired operation

Features

1. 6 channel, multi-purpose audio mixer and interface with high-quality DSP (digital signal processor) chip.
2. Supports LOOPBACK for live playback of backing tracks while recording and/or live streaming.
3. MIX function allows easy switching between direct monitor, USB audio monitor, or mixed signal.
4. Traditional, easy to operate, mixer control panel.
5. Professional DSP software allows easy editing for any musical style.

Lay out

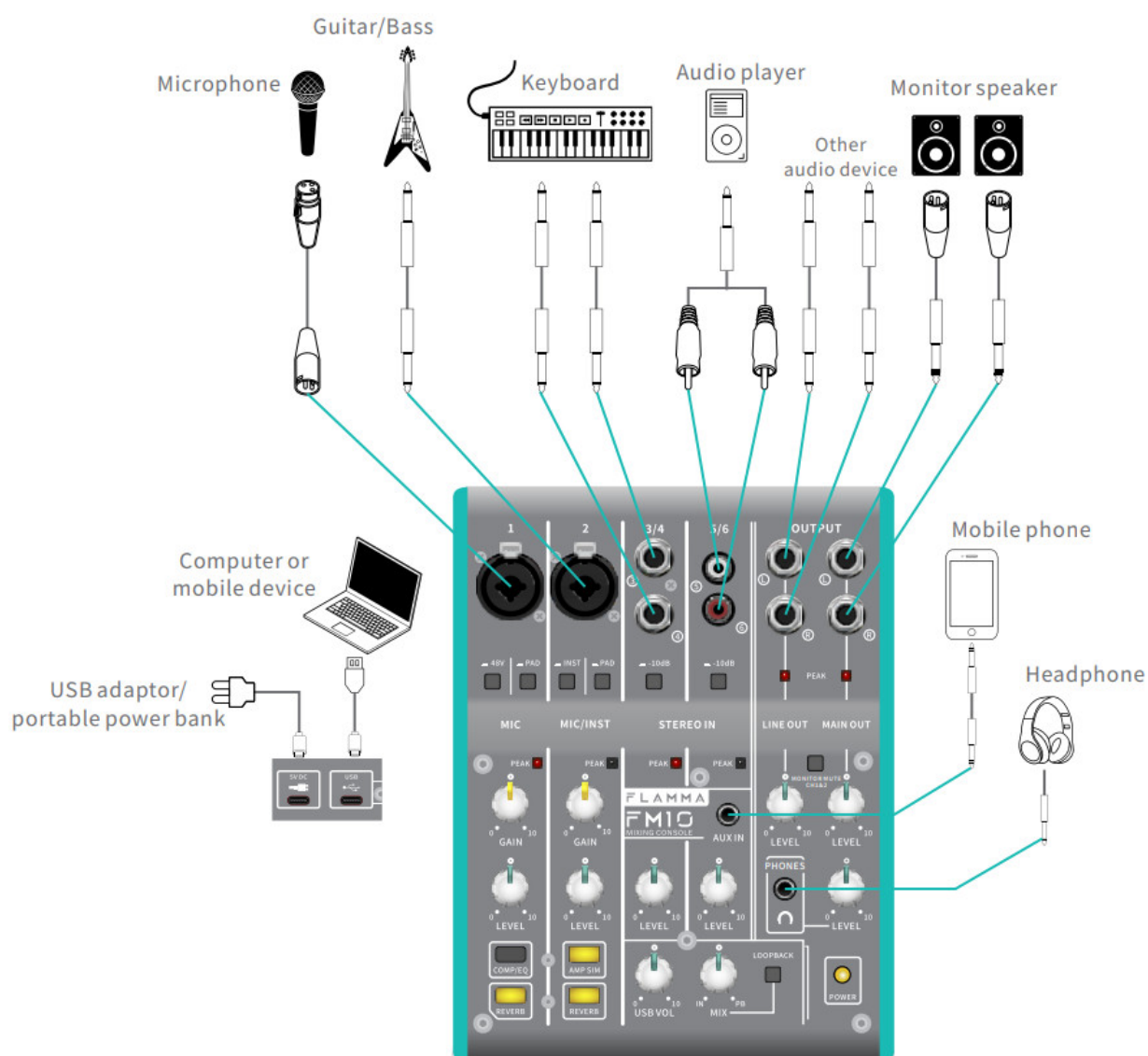


1. **Input 1-MIC/LINE:** XLR & 6.35mm TS input jack. Supports microphone (condenser microphone/moving coil microphone) or line input signal.

2. **Input 2-MIC/LINE:** XLR & 6.35mm TS input jack. Supports microphone (condenser microphone/moving coil microphone) or high-impedance signal (instrument signal)
3. **Input 3 & Input 4:** Dual-channel stereo 6.35mm TS input jack or line signal for connecting instruments (keyboard, synthesizer). For stereo setup, please connect both Input 3 and Input 4. For mono setup, please connect Input 3 only.
4. **Input 5 & Input 6:** Stereo RCA signal input jack. Supports line signal device.
5. **LINE OUT:** Stereo 6.35mm signal out to connect to monitoring device.
6. **MAIN OUT:** Stereo 6.35mm signal out to connect to monitoring device.
7. **INST impedance switch:** Impedance value switch for Input 2. Press to switch between high-impedance mode for connecting high-impedance instrument (Guitar & Bass) Notice: Please turn down the volume level of all the channels before switching cables or instruments. Always check peaks and levels before use to avoid damaging equipment or your hearing.
8. **48V phantom power switch:** Press to activate the 48V phantom power for Input 1. Please turn on this function while using condenser microphones that accept 48V phantom power.
Notice: 1. Please turn this function off if the connected device does not support 48V phantom power to avoid damaging equipment.
2. Please turn down the volume level of the current channel before toggling phantom power on/off.
9. **PAD:** Passive Attenuation Device switch for channel 1 and channel 2. If either channel is clipping/PEAK LED blinking, and GAIN levels have already been set to the minimum levels, you can turn on the PAD switch to reduce input levels.
Notice: Please turn down the volume of the selected channel before pressing this switch!
10. **-10dB switch:** Attenuation switch for channels 3/4, 5/6. If after setting GAIN levels to their minimum, press to activate the -10dB level if any channel between 3 and 6 are clipping to reduce the level of the input signal.
Notice: Please turn down the volume level of the clipping/hot channel before pressing this switch!
11. **PEAK:** Indicates the input/output signal level. A blinking red light indicates the signal is too high. Please turn down the GAIN of the channel or check the PAD/-10dB switch. Please remember to turn volume levels to 0 before toggling the PAD/-10dB switches! When the signal is too low, please turn up the GAIN of the channel.
12. **GAIN:** GAIN controls for channel 1 and channel 2. Please adjust the gain levels so the PEAK LED is blinking GREEN. If the GAIN is too high (RED PEAK LED), please rotate GAIN knob counter-clockwise. If the PEAK indicator is off or dim green, turn the GAIN up (rotate clockwise) until LED indicator is a strong, blinking GREEN.
13. **VOL:** Volume level adjustment. Adjust to balance the volume level for each channel.
14. **Effect:** Toggle effects on/off for channel 1 and channel 2. Press to activate.
15. **USB VOL:** USB audio volume adjustment.
16. **MIX:** The mix rate between direct monitoring and USB audio monitoring. Rotate to the far left for direct monitoring only. Rotate to the far right for USB audio monitoring only. Rotate to 12 o'clock for 50% direct monitoring, 50% USB audio monitoring.
17. **LOOPBACK:** USB audio playback recording. When activated, the USB input signal will be recorded into your computer or mobile device. Users can use this function to record the backing track or effect from the mixer to the live app.
Notice: Please turn off the LOOPBACK function when you are using the external software plugin effects and the USB audio monitoring to avoid feedback noise.
18. **POWER:** Indicates if device is on/off.

19. **Headphone volume:** Adjusts the volume level of headphone output.
20. **Headphone:** 3.5mm stereo headphone jack.
21. **Output volume:** Adjust the volume level of MAIN OUT and LINE OUT.
22. **Monitor Mute:** Press to mute Input 1 and Input 2.
23. **AUX IN:** 3.5mm stereo input jack.
24. **Power switch**
25. **5V USB TYPE-C port:** We recommend using a 5V 500mA adaptor/portable power bank as a power supply.
Please use this port as a power supply if the connected device cannot power the FM10 via the USB port.
26. **USB TYPE C port:** Use the USB type-C cable included with the FM10 to connect the unit to your computer via this port. It can work as power supply, USB audio transfer cable, and interface with editor software.

Connection



***Notice:** We recommend using a 5V 500mA adaptor/portable power bank as a power supply. Please use this port as a power supply if the connected device cannot power the FM10 via the USB port.

Instructions

1. Mixer

- (1) Connect all devices you wish to use to the FM10 via the correct input and output ports.
- (2) Set all GAIN and VOL knobs to their minimum value (0).

- (3) Press the power switch to turn on your FM10. Set the volume level of the current channel to 12 o'clock.
- (4) Set the GAIN level of each channel by checking input levels from the connected instrument/microphone/device. When PEAK LED indicator is flashing GREEN, the GAIN is set to the correct level. If PEAK LED is RED, please reduce GAIN levels to the appropriate amount.
- (5) After setting the GAIN values, adjust the VOL of each channel as you desire.
- (6) Adjust the main output volume according to your venue/room. Please maintain a reasonable volume level at all times to protect equipment and your hearing.

Notice:

1. If you wish to include the USB audio into the input signal (For example, using a computer to play backing tracks), please adjust the USB VOL to a reasonable value.
2. Set MIX to 12 o'clock so that you can monitor both the analog direct signal and the USB audio signal.

2. Recording

- (1) Connect your smart phone or computer to the TYPE-C USB audio port of FM10 via the TYPE-C USB cable included with the unit.
- (2) Connect all devices you wish to use to the FM10 via the correct input and output ports.
- (3) Set all GAIN and VOL knobs to their minimum value as the scene one does.
- (4) Open your recording software in your computer, or open the recording APP in your smart phone for recording.

Notice:

1. Set MIX to 12 o'clock so that you can monitor both the analog direct signal and the USB audio playback signal.
2. Please turn off the LOOPBACK function when you are using the USB audio monitoring in the recording software, turn the MIX to the far right position, to avoid feedback noise.
3. The USB AUDIO signal does not support ASIO low latency recording, we do not recommend to use it for directly recording.

3. Live stream

1. Please use the USB cable included with the FM10 to connect your computer/mobile device via the USB type-C port. (USB-OTG cable is needed for connecting to a mobile phone or tablet)
2. Set up all connections as desired, referring to the user guidelines in this manual.
3. Please refer to the MIXER section for guidelines on how to adjust GAIN and VOL levels.
4. Open the live stream app to begin streaming.

Notice:

1. If you wish to record the backing track from your computer/mobile device, please turn on the LOOPBACK function
2. Set MIX to 12 o'clock so that you can monitor both the analog direct signal and the USB audio signal.
3. You can monitor the backing track from your computer/mobile device only when you rotate the MIX to the far right.
4. Please turn off the LOOPBACK function when talking with others online using a microphone.

4. External software plugin effects

1. Set up connections as you desire, following the guidelines in this manual. If you are using a high-impedance instrument (guitar/bass), please use Input 2 and turn on the INST function.
2. Ensure the input signal is not too low or clipping (too high). (Refer to the PEAK section instructions)
3. Please rotate the MIX to the far right and turn off the LOOPBACK function.

4. Turn on the effect module and begin playing!

Notice:

1. Please turn off the LOOPBACK function before turning on external software plugin effects while USB audio monitoring to prevent any feedback noise.
2. If you can only monitor the dry signal or the dry signal mixed with effect signal, please check that the MIX knob is set all the way to the right (100%).
3. If there is no output signal, please check that the GAIN and VOL levels of each channel, the VOL of each output channel, and the USB LEVEL are set to the correct values.

***Notice:** When connecting to a smart phone or tablet, please use the USB Type-C port to power the FM10. Sometimes the mobile device cannot offer enough power for the Fm10.

Specifications

Input

MIC/LINE: XLR & 6.35mm audio jack x 2

Stereo LINE: 6.35mm mono audio jack x 2, RCA x 2

AUX IN: 3.5mm stereo audio jack x 1

USB IN: USB audio input channel x 2

Output

LINE OUT: 6.35mm mono audio jack x 2

MAIN OUT: 6.35mm mono audio jack x 2

PHONE: 3.5mm stereo audio jack x 2

USB OUT: USB audio jack x 2

Effects

PAD: 26dB

Modules: Channel 1- Compressor, Equalizer, Reverb

Channel 2- Compressor, Equalizer, Reverb

PEAK: It will turn on automatically when the gain level reaches clipping level -3dB.

USB AUDIO: 2 inputs and 2 outputs Sample rate 44.1 kHz, Sample depth 24bit

Power Supply: DC5V, Current Draw: 500mA

Dimensions: 150mmX197.2mmX60.3mm

Weight: 0.869kg

Accessories: Safety Instruction & Warranty Card Sticker quickguide

USB-A to USB-C cable

USB-C to USB-C cable

USB-C to Lightning cable (iOS)

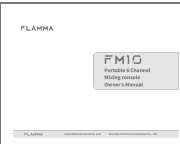
FLAMMA

www.flammainnovation.com

Shenzhen Flamma Innovation Co., Ltd

Made in China

Documents / Resources

	<p>FLAMMA FM10 Portable 6 Channel Mixing Console [pdf] Owner's Manual FM10, Portable 6 Channel Mixing Console, Mixing Console, Portable 6 Channel Console, Console, FM10 Mixing Console</p>
---	---