



Flamco MC01103-201605 Flexvent Max Automatic Air Vent Instruction Manual

[Home](#) » [Flamco](#) » Flamco MC01103-201605 Flexvent Max Automatic Air Vent Instruction Manual 

Contents

- [1 Flamco MC01103-201605 Flexvent Max Automatic Air Vent](#)
- [2 General](#)
- [3 Application](#)
- [4 Safety](#)
- [5 Installation](#)
- [6 Maintenance and service](#)
- [7 Dismantling](#)
- [8 Environment](#)
- [9 Documents / Resources](#)
 - [9.1 References](#)
- [10 Related Posts](#)



Flamco MC01103-201605 Flexvent Max Automatic Air Vent



General

The packaging contains a Flexvent Top / Pro / Super / MAX (A), and for the Flexvent Top 3/8\" a shut-off valve for optional installation (B). The Flexvent removes free air bubbles that collect at the highest point, which is also where the Flexvent is fitted.

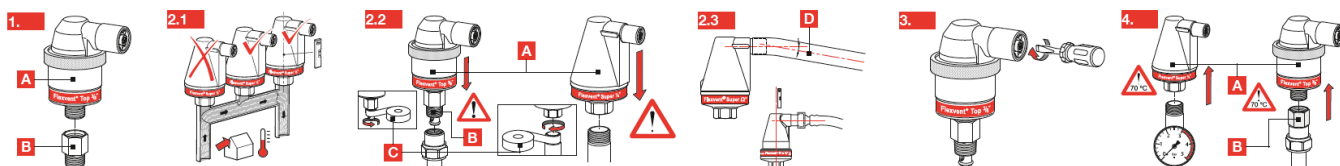
Application

- A Flexvent Top / Pro / Super / MAX can be used in heating and cooling/ chilled systems with glycol-based additives (max. 50%).
- The Flexvent Top / Pro / Super / MAX is not suitable for closed potable water systems and steam systems.

Safety

- Install the Flexvent Top / Pro / Super/ MAX in a frost-free location and in an easily accessible place for maintenance.
- Do not insulate the Flexvent Top / Pro / Super / MAX.

Installation



Safety requirements during installation

- Min. / max. system pressure: 0.2 bar / 10 bar (Flexvent MAX 25 bar, Flexvent Pro 12 bar).
- Min. / max. system temperature: -10 °C (with glycol) / +120 °C. Make sure installation is carried out by qualified personnel only. Observe local legislation and guidelines.
- Flush all debris from the system adequately before the installation of the Flexvent Top / Pro / Super / MAX.
- For optimal performance, the Flexvent Top / Pro / Super / MAX should be installed in a horizontal pipe at the highest point of the system. Installation on a rising main is not recommended (2.1).
- Use sealing tape (C) on the Flexvent Top / Pro / Super / MAX (A), or on the shut-off valve (B).
- The outlet of the Flexvent Top / Super / MAX has a 22 mm (¾" – Flexvent Pro) connection for a drain (D).

Maintenance and service

Regularly inspect the valve (at least once per year). The Flexvent Top / Pro / Super / MAX can be closed off by turning the screw in the outlet clockwise.

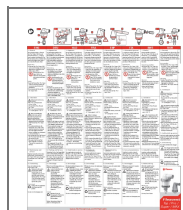
Dismantling

Carry out maintenance only when system is cold. Depressurise the system (only for types without shut-off valve). Risk of scalding! Hot water can flow out of the system. Remove the Flexvent Top / Pro / Super / MAX (A) from the shut-off valve (B), or remove the vent (A) from the system.

Environment

Comply with local regulations when disposing of the product.

Documents / Resources



[Flamco MC01103-201605 Flexvent Max Automatic Air Vent](#) [pdf] Instruction Manual
MC01103-201605 Flexvent Max Automatic Air Vent, MC01103-201605, Flexvent Max Automatic Air Vent, Max Automatic Air Vent, Automatic Air Vent, Air Vent

References

- [under construction](#)