



FJM SL-500 Metcom Combo Meter Instructions

[Home](#) » [FJM](#) » FJM SL-500 Metcom Combo Meter Instructions 

Contents

- [1 FJM SL-500 Metcom Combo Meter](#)
- [2 Product Specifications](#)
- [3 Product Usage Instructions](#)
- [4 KeyGuardPro Lock Box](#)
- [5 Combination Change/Reset Instructions](#)
- [6 Using KeyGuardPro](#)
- [7 Documents / Resources](#)
 - [7.1 References](#)
- [8 Related Posts](#)



FJM SL-500 Metcom Combo Meter



Product Specifications

- Product Name: KeyGuardPro Lock Box [shackle mount]
- Manufacturer: FJM Security Products
- Combination Length: 4 to 7 numbers and/or letters
- Color: Black
- Material: Hardened Steel

Product Usage Instructions

Combination Change/Reset Instructions

1. Select a new combination between 4 to 7 numbers and/or letters.
2. Press and release the clear button (a) to reset the buttons.
3. Push down on the open tab (b) to expose the backside of the faceplate.
4. Using the white plastic combination change key (c), rotate each number corresponding to your desired combination 180 degrees until the arrow points down.
5. Open the shackle by pushing the release tab (d) inside the KeyGuardPro.

Using KeyGuardPro

1. Press the clear button (a), enter the combination, and pull down the open tab (b) to access the contents.
2. To close KeyGuardPro, enter the combination, close the front face, and release the open tab (b) to secure it in the locked position.
3. To release the shackle, ensure KeyGuardPro is open, then push the shackle release tab (d) to the right.

FAQ

- Q: What should I do if I forget my combination?

A: If you forget your combination, please contact FJM Security Products customer service for assistance. Do not attempt to force open the lock box.

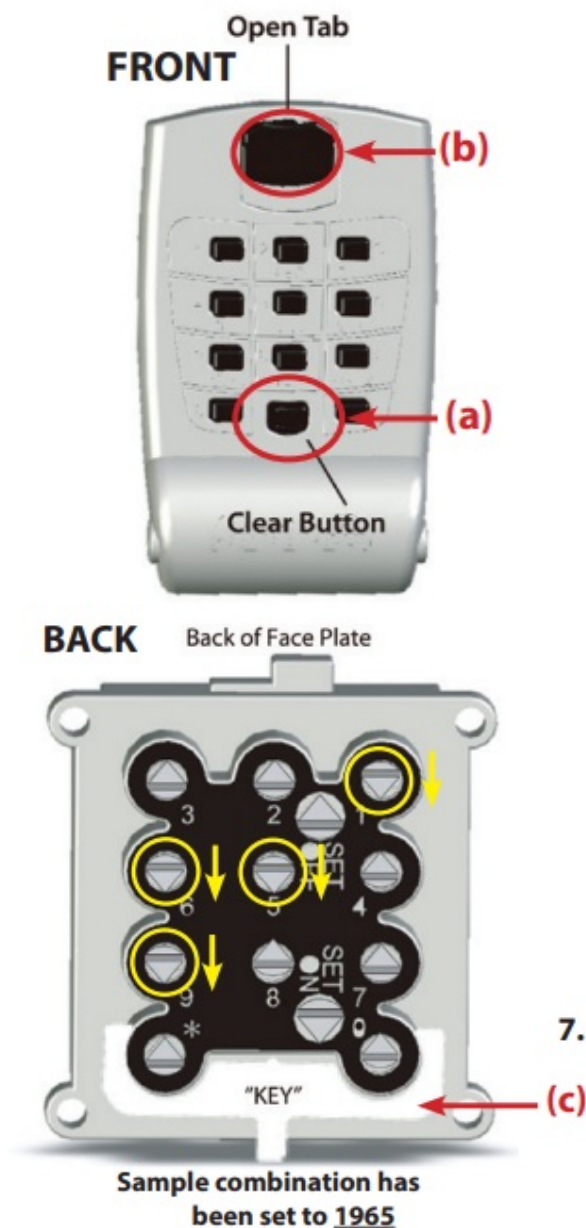
- Q: Can I mount the KeyGuardPro on different surfaces?

A: The KeyGuardPro is designed for shackle mounting only and should not be mounted on surfaces other than door handles or similar fixtures.

KeyGuardPro Lock Box

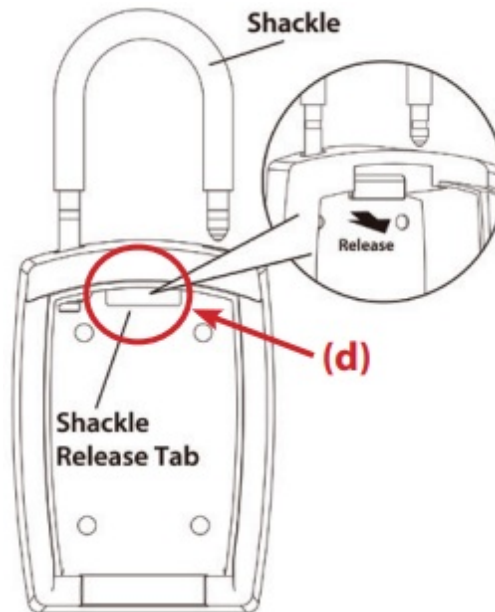
[shackle mount] You can set a new combination for your KeyGuardPro any time by following the below directions:

Combination Change/Reset Instructions

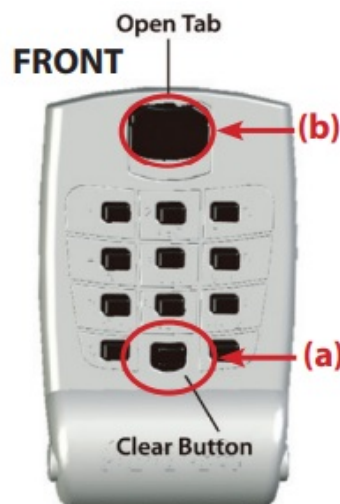


1. KeyGuardPro does not come preset to any combination. For best security, choose a combination of 4 to 7 numbers and/or letters.
2. The first time you set the combination, press and release the clear button (a) to clear the combination and reset the buttons.

3. Push down on the open tab (b). The KeyGuardPro will open, exposing access to the backside of the faceplate.
4. On the backside of the faceplate, there are 11 yellow buttons with arrows pointing upward. Below the arrows are numbers that correspond to the numbers on the front of the door. If using a lettered combination, find the corresponding numbers for the lettered group.
5. Remove the white plastic combination and change the “key” (c) at the bottom. (Note: a small screwdriver can also be used).
6. Using the combination change “key” (c), push in and rotate each number that corresponds with your desired combination 180 degrees until the arrow on the button is pointing down toward base of KeyGuardPro. Do this for each letter and/or number in the combination. (Note: Arrows on buttons must be pointing directly down at a 6 o'clock orientation or your combination will not work.)

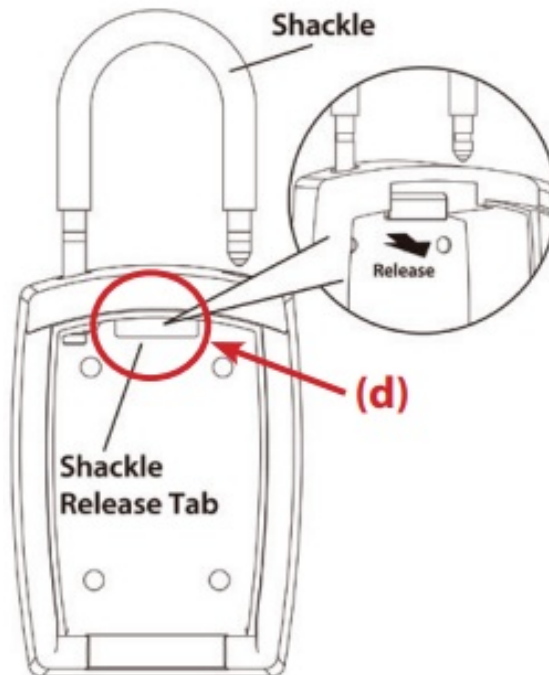


7. The shackle can now be opened by pushing the release tab (d) inside the KeyGuardPro. Once the shackle is released, place it on the door handle and secure it by putting it back into its original position.



8. Double-check the combination to make sure it is set properly. Remember each button that is activated with the arrow pointing downwards represents part of the combination.
9. Test the combination before closing the face of KeyGuardPro. Press the clear key (a), select the combination and pull down the open tab (b) to open. If the tab pulls down, the combination is set correctly. If it does not pull down, DO NOT CLOSE THE COVER. Check arrows again to make sure the correct ones are activated and that they are not crooked or misaligned

Using KeyGuardPro

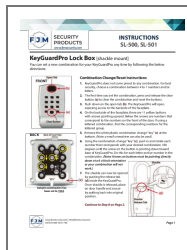


1. To use your key box, press a clear button (a) each time it is used, then enter in the combination and pull down on the open tab (b).
2. To close KeyGuardPro, put in combination and pull down open tab (b). Close the front face and release the open tab (b). KeyGuardPro should now be secured in the locked position.
3. The shackle can only be released when KeyGuardPro is open. To release the shackle, push the shackle release tab (d) to the right. The shackle is secured automatically when closing the shackle.
4. The KeyGuardPro offers the ability to use an optional, small $\frac{3}{4}$ " wide padlock that can be placed through the loop on release tab. This option, if desired, prevents others from opening the shackle and removing the lock box once the door is open.

www.fjmsecurity.com | info@fjmsecurity.com

Toll-free 800-654-1786

Documents / Resources



[FJM SL-500 Metcom Combo Meter](#) [pdf] Instructions
SL-500 Metcom Combo Meter, SL-500, Metcom Combo Meter, Combo Meter, Meter

References

-  [FJM Security](http://www.fjmsecurity.com)

- [User Manual](#)

Manuals+, Privacy Policy

This website is an independent publication and is neither affiliated with nor endorsed by any of the trademark owners. The "Bluetooth®" word mark and logos are registered trademarks owned by Bluetooth SIG, Inc. The "Wi-Fi®" word mark and logos are registered trademarks owned by the Wi-Fi Alliance. Any use of these marks on this website does not imply any affiliation with or endorsement.