



FITHOME JJ-BLE Bluetooth Embedded Module Instructions

[Home](#) » [FITHOME](#) » FITHOME JJ-BLE Bluetooth Embedded Module Instructions 



Module parameters

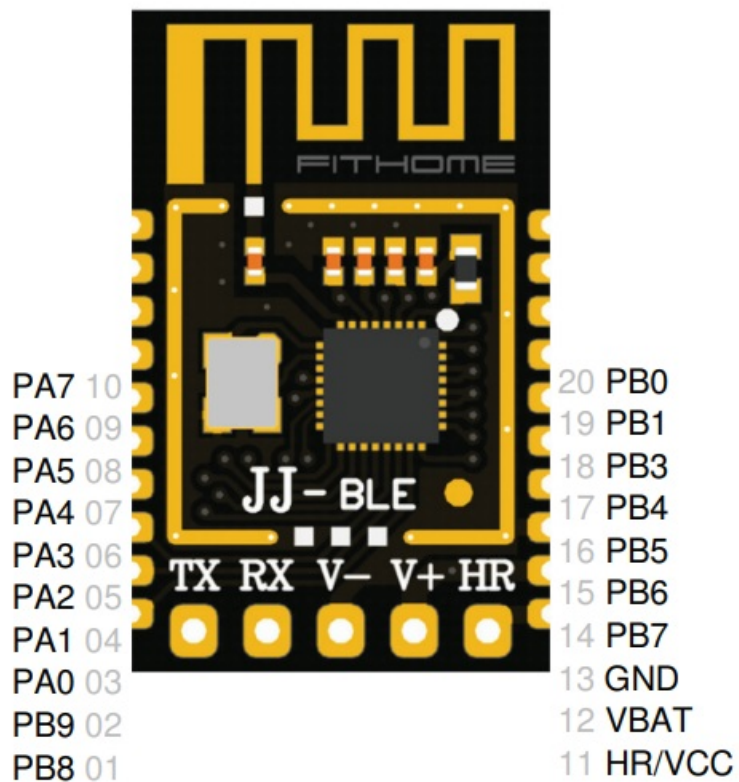
Contents

- [1 Specification](#)
- [2 FCC Radiation Exposure Statement](#)
- [3 Documents / Resources](#)
 - [3.1 References](#)

Specification

Appearance and interface

Bluetooth protocol	Bluetooth Specification V5.2
Working frequency	2400 – 2482 MHz
modulation mode	GFSK(Gaussian Frequency Shift Keying)
transmitting power	<0 dBm
response rate	-86dBm
Support service	Peripheral UUID FTMS
power dissipation	2 – 5 mA
working temperature	-20 – 70 °C
Voltage	DC: 3.0 – 5.0V
Drive ability	10 < 20mA, MAX: 100mA
Size	14.5 mm x 23 mm x 2 mm



PIN	NAME
1	PB8
2	PB9
3	PAO
4	PA1
5	PA2
6	PA3
7	PA4
8	PA5
9	PA6
10	PA7
11	HR/VCC 5V
12	VBAT 3V (v+)
13	GND (V-)
14	PB7
15	PB6
16	PB5
17	PB4
18	PB3
19	PB1
20	PBO

Caution: The user is cautioned that changes or modifications not expressly approved by the party responsible for compliance could void the user's authority to operate the equipment.

This device complies with Part 15 of the FCC Rules. Operation is subject to the following two conditions: (1) this device may not cause harmful interference, and (2) this device must accept any interference received, including interference that may cause undesired operation.

NOTE: This equipment has been tested and found to comply with the limits for a Class B digital device, pursuant to Part 15 of the FCC Rules. These limits are designed to provide reasonable protection against harmful interference in a residential installation. This equipment generates, uses and can radiate radio frequency energy and, if not installed and used in accordance with the instructions, may cause harmful interference to radio communications. However, there is no guarantee that interference will not occur in a particular installation.

If this equipment does cause harmful interference to radio or television reception, which can be determined by turning the equipment off and on, the user is encouraged to try to correct the interference by one or more of the following measures:

- Reorient or relocate the receiving antenna.
- Increase the separation between the equipment and receiver.
- Connect the equipment into an outlet on a circuit different from that to which the receiver is connected.

- Consult the dealer or an experienced radio/TV technician for help.

FCC Radiation Exposure Statement

This equipment complies with FCC radiation exposure limits set forth for an uncontrolled environment. This equipment should be installed and operated with a minimum distance of 20cm between the radiator and your body. This transmitter must not be co-located or operating in conjunction with any other antenna or transmitter. The module in this product is labeled with its own FCC ID No. The FCC ID and is not visible when the module is installed inside another device. Therefore, the outside of the device into which the module is installed must also display a label referring to the module. The final end device must be labeled in a visible area with the following: Contains FCC ID: 2BEFF-JJBLE”

FITHOME (Xiamen) Technology Co., Ltd.



Documents / Resources

	FITHOME JJ-BLE Bluetooth Embedded Module [pdf] Instructions JJ-BLE, JJ-BLE Bluetooth Embedded Module, Bluetooth Embedded Module, Embedded Modul e, Module
--	---

References

- [User Manual](#)

[Manuals+](#), [Privacy Policy](#)

This website is an independent publication and is neither affiliated with nor endorsed by any of the trademark owners. The "Bluetooth®" word mark and logos are registered trademarks owned by Bluetooth SIG, Inc. The "Wi-Fi®" word mark and logos are registered trademarks owned by the Wi-Fi Alliance. Any use of these marks on this website does not imply any affiliation with or endorsement.