

FISHER & PAYKEL
HP60IDCHEX4
Integrated Insert
Range Hood with
External Motor



FISHER AND PAYKEL HP60IDCHEX4 Integrated Insert Range Hood with External Motor Instruction Manual

[Home](#) » [FISHER and PAYKEL](#) » FISHER AND PAYKEL HP60IDCHEX4 Integrated Insert Range Hood with External Motor Instruction Manual 

Contents

- [1 FISHER AND PAYKEL HP60IDCHEX4 Integrated Insert Range Hood with External Motor](#)
- [2 Specifications](#)
- [3 SAFETY AND WARNINGS](#)
- [4 Installation](#)
- [5 COMPONENTS REQUIRED](#)
- [6 PRODUCT DIMENSIONS](#)
- [7 INSTALL PREPARATION](#)
- [8 Documents / Resources](#)
 - [8.1 References](#)
- [9 Related Posts](#)

FISHER & PAYKEL

FISHER AND PAYKEL HP60IDCHEX4 Integrated Insert Range Hood with External Motor






Specifications

- Model: HP60IDCHEX4 & HP90IDCHEX4
- Rangehood Type: Integrated Insert with External Motor

- Overall Height without Ducting Adapter: 316mm
- Overall Width: 398mm
- Overall Depth (excl. cabinetry front panel): 530mm
- Diameter of Ducting Adaptor: 200mm
- Width of Rangehood Chassis: 492mm
- Depth of Rangehood Chassis: 258mm
- Height Adjustability of Clip: 15mm to 40mm

SAFETY AND WARNINGS

⚠ WARNING!	
	Electric Shock Hazard Failure to follow this advice may result in electric shock or death. <ul style="list-style-type: none"> • Installation and electrical wiring must be completed by qualified person(s) in accordance with all applicable codes and standards, including fire-rated construction. • Always disconnect the appliance from the mains power supply before carrying out any maintenance or repairs.
⚠ WARNING!	
	Weight Hazard Failure to follow this advice may result in damage or personal injury. <ul style="list-style-type: none"> • The appliance is heavy. Please ensure adequate care is taken when installing the appliance. • Product weight: 6.4kg (HP60) and 8.4kg (HP90).
⚠ WARNING!	
	Cut Hazard Failure to use caution could result in injury. <ul style="list-style-type: none"> • Take care: some edges are sharp. • Wear gloves to protect against sharp edges.

WARNING!

When using this appliance always exercise basic safety precautions including the following.

Installation

- Please read the entire set of instructions before installing or using this appliance.
- Please make this information available to the person installing the appliance – doing so could reduce your installation costs.
- Always switch the power off before installation, servicing, or cleaning of the appliance.
- This appliance must be installed and connected to the mains power supply only by a suitably qualified person according to these installation instructions and in compliance with any applicable local building and electricity regulations. Failure to install the appliance correctly could invalidate any warranty or liability claims.
- To comply with electrical safety regulations, the appliance must be plugged into a socket near the appliance.

The socket must be accessible, or have an accessible isolating switch, to enable the end user to isolate the appliance from the power for internal cleaning or maintenance.

- A power outlet should be within 750 mm of the rangehood and can either be on the wall, behind the chimney, or in the ceiling.
- If the supply cord of this equipment is damaged, it must only be replaced by the manufacturer, its service agent, or a similarly qualified person to avoid a hazard.
- All ducting must comply with local requirements and building codes.
- Attention should be given to ensure that any applicable regulations concerning the discharge of exhaust air are fulfilled.
- To reduce the risk of fire and to properly exhaust air, be sure to duct air outside — Do not vent exhaust air into spaces within walls or ceilings or into attics, crawl spaces, or garages.
- Before connecting any pipes, consult municipal ordinances to ensure that any applicable regulations concerning the discharge of exhaust air are adhered to and request permission from the person in charge of the building.
- To reduce the risk of damage occurring to the cooktop, it is recommended that the surface of the cooktop is protected with cardboard or a similar object during the installation of the range hood.
- This unit must be earthed/grounded. Improper earthing/grounding can result in a risk of electric shock.
- When cutting or drilling into a wall or ceiling, do not damage electrical wiring and other hidden utilities.
- Failure to install the screws or fix the device by these instructions may result in electrical hazards.
- Exhaust air must not be discharged into an existing flue that is used for exhausting fumes from appliances burning gas or other fuels.
- Range hoods may affect the safe operation of appliances burning gas or other fuels (including those in other rooms) due to the backflow of combustion gases. These gases can potentially result in carbon monoxide poisoning. Ensure there is adequate ventilation in the room when the rangehood is used at the same time as appliances burning gas or other fuels. After installation of a rangehood, the operation of flued gas appliances should be tested by a competent person to ensure that backflow does not occur.
- To avoid a hazard due to inadvertent resetting of the thermal cut-out, this appliance must not be supplied through an external switching device, such as a timer, or connected to a circuit that is regularly switched on and off by the utility.
- The minimum distance between the supporting surface for the cooking vessels on the hob and the lowest part of the range hood. (When the range hood is located above a gas appliance, this distance shall be at least 60 cm. If the instructions for installation of the gas hob specify a greater distance, this has to be taken into account. The distance of 60 cm can be reduced for
- non-combustible parts of range hoods, except grease filters, and/or parts operating at safety extra low voltage, provided these parts do not give access to live parts if deformed)

COMPONENTS REQUIRED

PARTS

- Keep all packing materials until the unit has been inspected.
- Inspect the product to ensure there is no shipping damage. If any damage is detected contact the dealer or retailer you bought the product from to report the damage.
- Fisher & Paykel is not responsible for shipping damage.

Supplied



Rangehood (1)



Safety guide (1)



200mm outlet (1)



Phillips screws (4)

External Motor kit



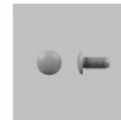
150mm Internal diameter 500mm PVC roof pipe (1)



200mm diameter Flexible ducting 6m (1)*



12mm Plastic self-tapping screws (4)



12mm Sheet metal screws (4)



External Blower (1)



Back draft damper assembly (1)



150 - 200mm diameter adaptor (1)



Metal ducting ring (2)

Not Supplied



Roof seal kit (1)**



Aluminium tape (**DO NOT** use duct tape) (1)



Support straps/brackets (1)



Zip ties and sealant (1)



Additional 200mm flexible ducting 6m
PN: 792961

Additional lengths can be ordered from www.fisherpaykel.com
Kit will differ based on the roof type. Roofing screws are not shown.

TOOLS

Not supplied



Phillips screwdriver (1)



Duct tape (1)



Electric drill (1)



Jigsaw (1)



Pencil (1)



Ruler (1)



Tape measure (1)

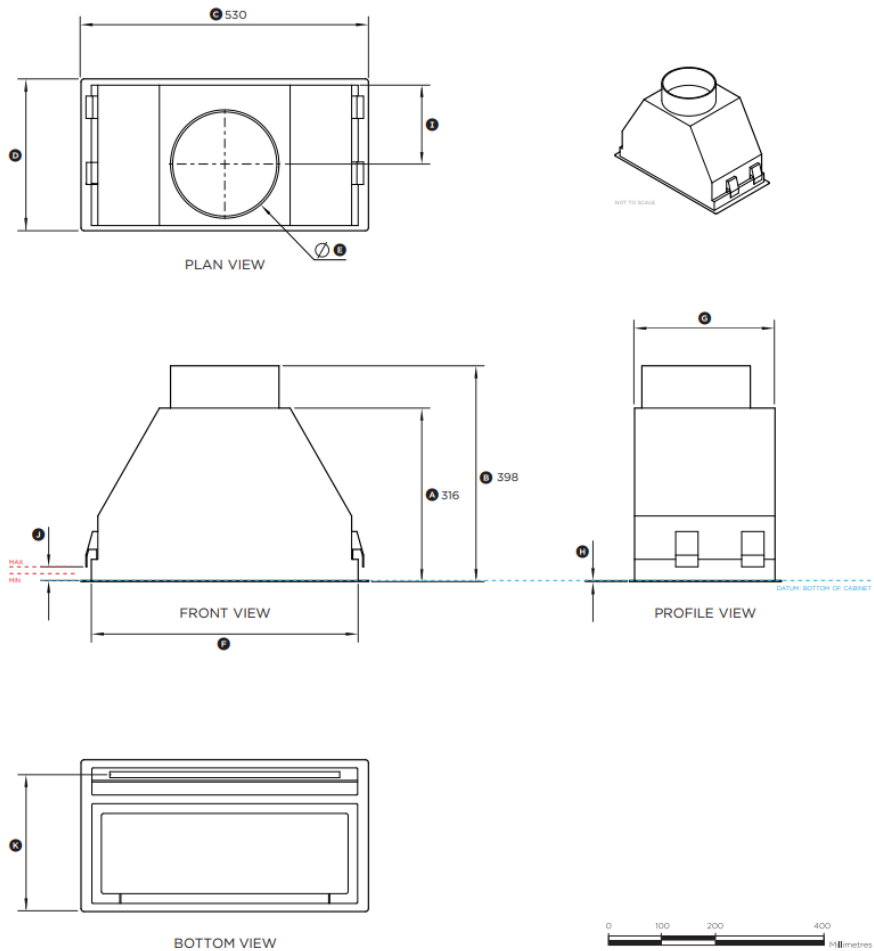


String & weight (1)



Level (1)

PRODUCT DIMENSIONS



Model nos:

HP60IDCHEX4

Product Dimensions	mm
① Overall height of rangehood without ducting adapter	316
② Overall height of rangehood with ducting adapter	398
③ Overall width of rangehood	530
④ Overall depth of rangehood (excl. cabinetry front panel)	280
⑤ Diameter of ducting adaptor	200
⑥ Width of rangehood chassis	492
⑦ Depth of rangehood chassis	258
⑧ Thickness of flange	2
⑨ Distance from ducting outlet centre to rear of chassis	146
⑩ Height adjustability of clip that secures cooker hood (cabinet base panel thickness)	min 15 max 40
⑪ Distance from rear to centre of light	253

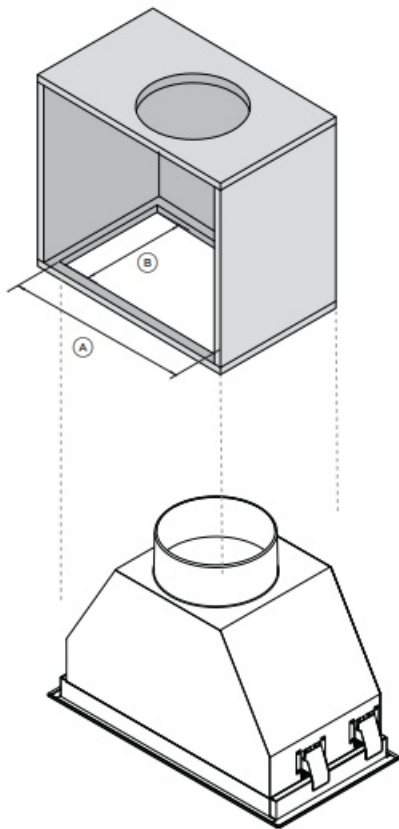
Cavity Dimensions Standard Installation	mm
Width of cutout	500
Depth of cutout	260

Minimum distance above cooktops	mm
Minimum height from top of cooktop to base of Rangehood	600

IMPORTANT NOTE: Throughout this guide, dimensions may vary by $\pm 2\text{mm}$ (1/16"). Please read the installation guide for detailed information on installing the product. For full installation instructions & specifications visit fisherpaykel.com

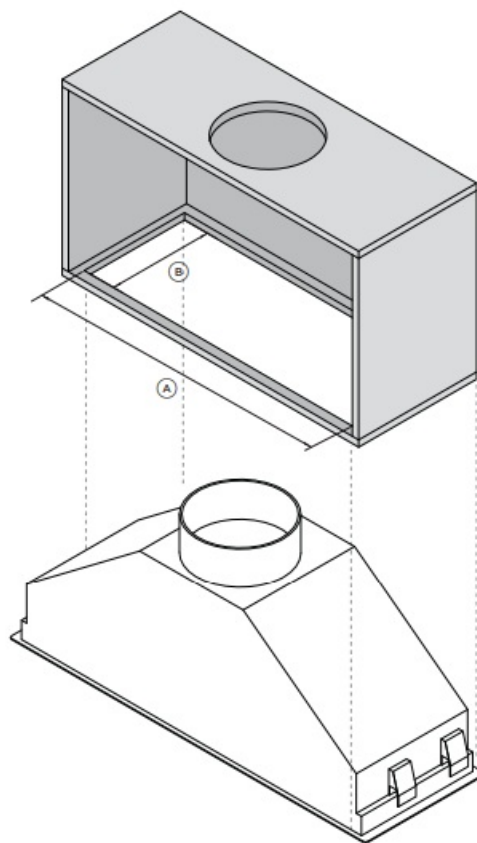
CUTOUT DIMENSIONS

60cm model



CUTOUT DIMENSIONS		HP60
		MM
Ⓐ	Overall width of the cutout	500
Ⓑ	Overall depth of the cutout	260

90cm model



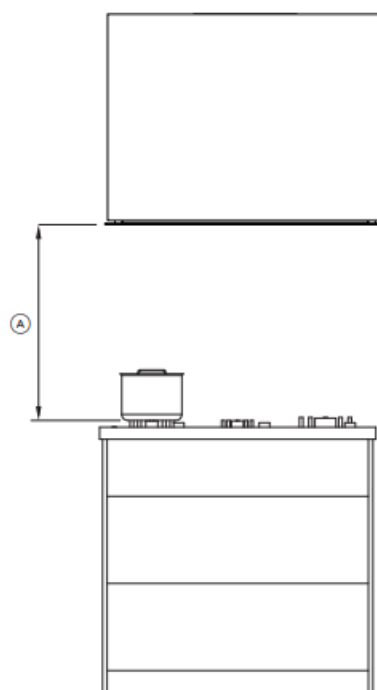
HEIGHT DIMENSIONS

MM

Ⓐ Height top of cooktop to base of product

min 600

INSTALLATION HEIGHT



HEIGHT DIMENSIONS

MM

Ⓐ Height top of cooktop to base of product

min 600

This rangehood must be installed no lower than the minimum height indicated in the table above. Minimum installation height may be greater if required by the cooktop, refer to your cooktop installation instructions. Installation at the minimum height will improve the efficiency of capturing cooking odors, grease, and smoke. Installation above the minimum height is the user's preference, it is not recommended to install above the

maximum height indicated in the table above.

Induction cooktop considerations

- Induction cooktops use energy-efficient technology that only heats the contents of a cooking pot.
- Unlike gas or traditional electric cooktops, the surrounding air does not get heated when using an induction cooktop. As a result, rangehood filters, splashback, and surrounding cabinetry do not get warmed up, increasing the likelihood of condensation on these cooler surfaces.
- Other factors like ambient temperature, humidity, natural ventilation of the room, size of the cookware, and how the induction cooktop is being used also influence condensation. For example, aggressive boiling on high cooktop heat settings like PowerBoost increases the rate at which water is evaporated, increasing the likelihood of condensation.
- It is important to understand that neither the rangehood nor the induction cooktop are faulty as a result of this phenomenon.

Condensation can be minimized by:

- Installing the rangehood at the maximum height above the cooktop as specified in this user guide.
- Using the rangehood on a lower speed setting when boiling.
- Use the induction cooktop on a lower heat setting when boiling.
- Switching the rangehood on 5 minutes before cooking and letting it run for at least 5 minutes after cooking. Refer to your user guide for details on how to use the timer function.

VENTING REQUIREMENTS

Attention should be given to ensure that any applicable regulations concerning the discharge of exhaust air are fulfilled. This range hood is designed to operate with a Fisher & Paykel external blower with the exhaust air ducted externally from the kitchen. External blower rangehood installation is different from internal blower rangehood installation.

For optimum performance of this blower:

1. Identify roof locations where blower noise will be acceptable. This will depend on the following:
 - Distance from outdoor living areas.
 - Transmission of noise through ceiling or windows located near the blower.
2. Mount the blower 4-6m from the range hood.
3. Use only the supplied Fisher & Paykel flexible ducting.
4. Extend ducting and cut to the required length. If additional ducting is required this can be purchased from Fisher & Paykel. Refer to 'Parts and Accessories' for details.
5. Maximum recommended duct length 12m.
6. Bends in ducting should be smooth, and gradual and have a radius of at least two times the duct diameter.
7. Ducting from rangehood to blower should have at least two bends. The bends in the ducting help to reduce the transmission of noise from the external blower to the range hood.

ELECTRICAL REQUIREMENTS

Before connecting the rangehood to the power supply, ensure the voltage and frequency indicated on the rating plate match that of the installation location:

MODEL	FREQUENCY	VOLTAGE
HP60IDCHEX4	50 Hz	164 W
HP90IDCHEX4	50 Hz	164 W

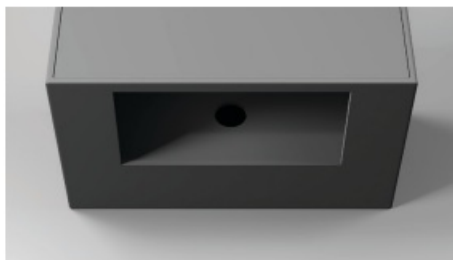
INSTALL PREPARATION

The rangehood must be installed offset from the remote motor to achieve the expected noise performance. The external motor should be 4-6m away from the hood.

1. Duct to roof



2. Ensure the cavity is set up to the correct specifications. Refer to 'cutout dimensions' for details.



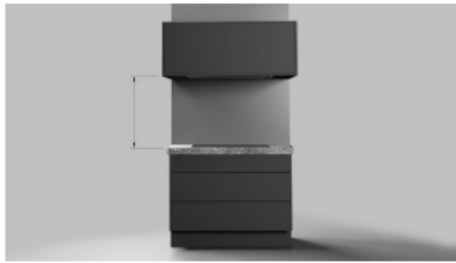
3. Ensure access to power and ducting connections has been considered.



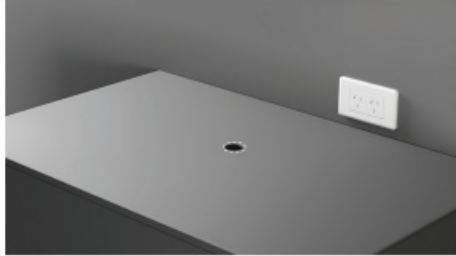
4. Ensure the top of the rangehood remains accessible via the cavity throughout the installation.



5. Refer to cooktop specifications to ensure adequate clearances are maintained.



6. One power outlet is required, this must be accessible to the customer.



7. Protect the cooktop and benchtop during installation.



CHECK DUCTING

1. Ensure the ducting is the correct length and compatible with the range hood. If ducting is supplied with the external motor check that it is the correct length. If needed additional ducting of the same diameter can be used.



UNPACK PRODUCT

1. Ensure both external motor and rangehood cartons are present.



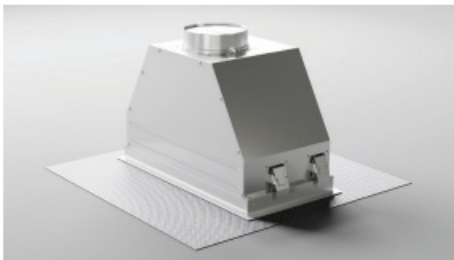
2. Open the carton and remove all packaging. Carefully lift the products out of the cartons. Place on a protected surface.



3. Dispose of packaging responsibly. Recycle where possible.



4. Inspect the product for any damage. Connect the motor to the hood and test.



PREPARE MOTOR

1. Rest upside down and fit the backdraft damper using four Phillips screws



INSTALL EXTERNAL MOTOR

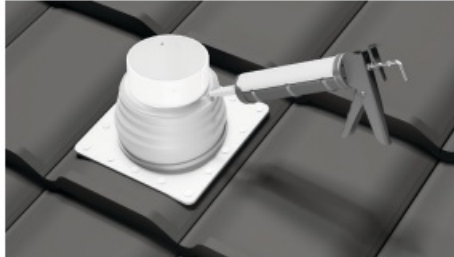
1. Create a hole in the roof for PVC pipe.



2. Orient PVC pipe with pre-drilled holes at the top, and insert into the hole. Ensure it is installed vertically and protrudes a minimum of 50mm above the roof seal. Brace pipe against roof studs.



3. Ensure the PVC pipe is vertical before securing it to internal beams. Seal the pipe with the appropriate roof sealing kit.

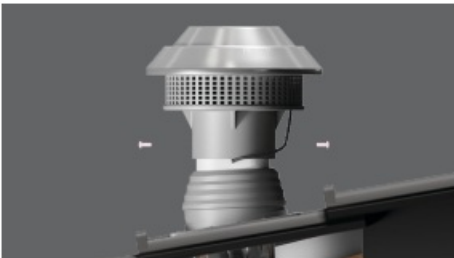


4. Route the power cord through the pipe, ensuring it rests in the upper slot on the PVC pipe. Once the cord is in place, lower the motor onto the pipe.

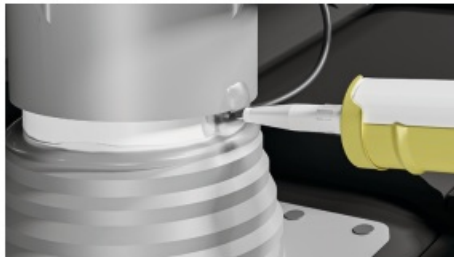


INSTALL EXTERNAL MOTOR

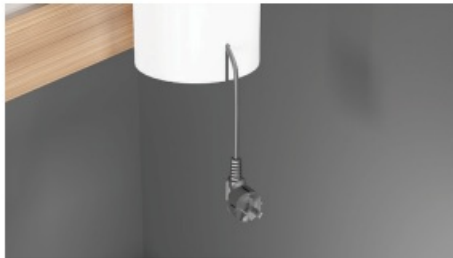
1. Secure the motor to the PVC pipe using four 5 Phillips screws.



2. Seal around the power cord slot as required.



3. Route the power cord through the PVC pipe and the lower slot.



4. Attach the 160 – 200mm adapter onto the PVC pipe and secure.



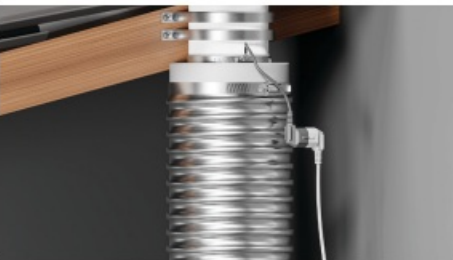
INSTALL DUCTING

200MM FLEXI DUCTING

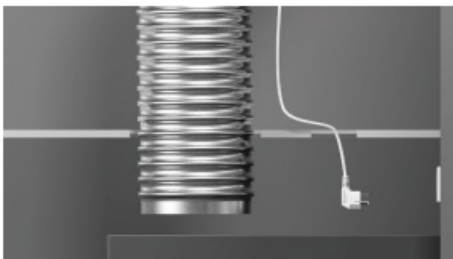
1. Check length.



2. Connect ducting to the motor and secure using the supplied clamp.



3. Route power cord and ducting through the ceiling.

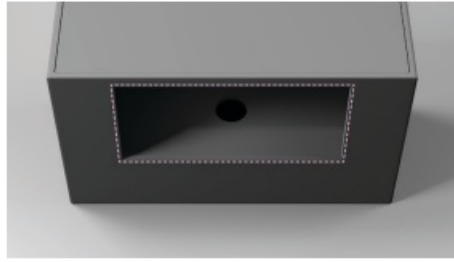


PREPARE CABINETRY

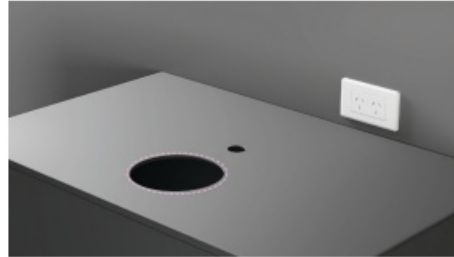
Ensure the cabinetry can support the weight of the rangehood and ducting.

NON PRECUT CABINETRY

1. Centre range hood over the cooktop and prepare cutout to the required specifications. Refer to dimensions and cabinetry cutout pages.

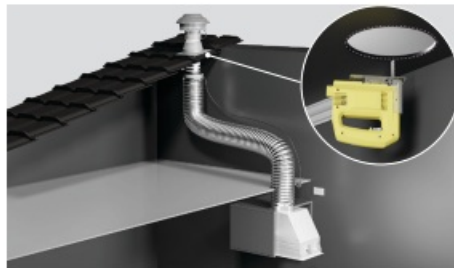


2. Prepare the ducting route.



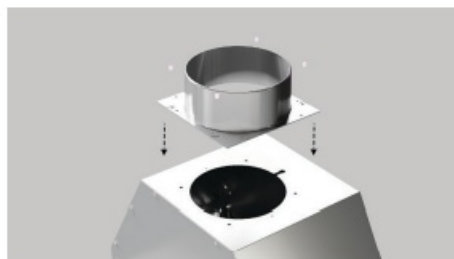
PRE CUT CABINETY

1. Prepare the ducting route.

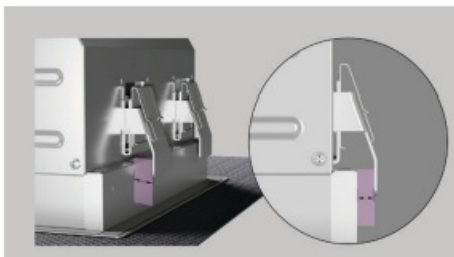


PREPARE HOOD

1. Fit the duct adapter to the rangehood using four supplied Phillips screws.



2. Ensure an air gap between the chassis and all mounting brackets* is maintained.



INSTALL HOOD

1. Lift rangehood into the cavity until brackets rest on the cabinetry. Ensure the power cord remains free and unobstructed.



2. Unclip filters to remove.



3. On one side of the perimeter plate, loosen the two screws shown, and slide the perimeter plate out.



4. From below the rangehood, secure all four brackets using a Phillips screwdriver. Ensure the flange is flush against the cabinetry.



5. Refit the perimeter plate and secure using the screws removed in Step 3.

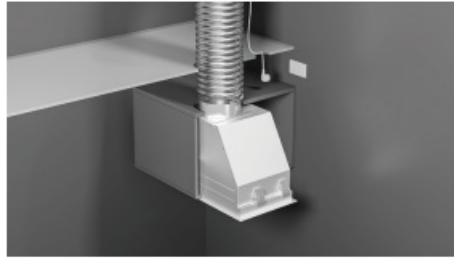


6. Ensure filters are oriented correctly before clipping back into place.



SECURE DUCTING

1. Attach flexible ducting to the rangehood duct adapter. Secure using tape, cable ties, or metal straps as required.



2. Connect the external motor plug to the rangehood socket.



CONNECT POWER

1. Plug in and turn the power on.



AFTER POWER CONNECTION

1. Remove film from all surfaces of the rangehood.



INSTALLER CHECKLIST

TO BE COMPLETED BY THE INSTALLER

- ☐ Have all packaging been removed?
- ☐ Rangehood is correctly installed
- ☐ All connections are secure
- ☐ The ducting is not crushed or blocked in any areas
- ☐ Check rangehood suction
- ☐ All local regulations have been met
- ☐ Operation has been tested (refer to rangehood user guide)
- ☐ Check for unusual noises
- ☐ Must be mounted at least 4 - 6m away from the hood
- ☐ The ducting has at least two bends

Complete and keep for safe reference:

Model	_____
Serial no.	_____
Purchase date	_____
Purchaser	_____
Dealer address	_____
Installer's name	_____
Installer's signature	_____
Installation company	_____
Installation date	_____

FAQs


Q: What should I do if I detect shipping damage on the product?

A: Contact the dealer or retailer you bought the product from to report the damage and seek assistance.



Q: Can I order additional lengths of flexible ducting?

A: Yes, additional lengths can be ordered from www.fisherpaykel.com using PN: 792961.

Documents / Resources

	FISHER AND PAYKEL HP60IDCHEX4 Integrated Insert Range Hood with External Motor [pdf] Instruction Manual HP60IDCHEX4, HP90IDCHEX4, HP60IDCHEX4 Integrated Insert Range Hood with External Motor, HP60IDCHEX4, Integrated Insert Range Hood with External Motor, Insert Range Hood with External Motor, Hood with External Motor, External Motor, Motor
---	--

References

-  [Shop Luxury Kitchen Appliances | Fisher & Paykel United Kingdom](#)
-  [Shop Luxury Kitchen Appliances | Fisher & Paykel USA](#)
- [User Manual](#)

[Manuals+](#), [Privacy Policy](#)

This website is an independent publication and is neither affiliated with nor endorsed by any of the trademark owners. The "Bluetooth®" word mark and logos are registered trademarks owned by Bluetooth SIG, Inc. The "Wi-Fi®" word mark and logos are registered trademarks owned by the Wi-Fi Alliance. Any use of these marks on this website does not imply any affiliation with or endorsement.