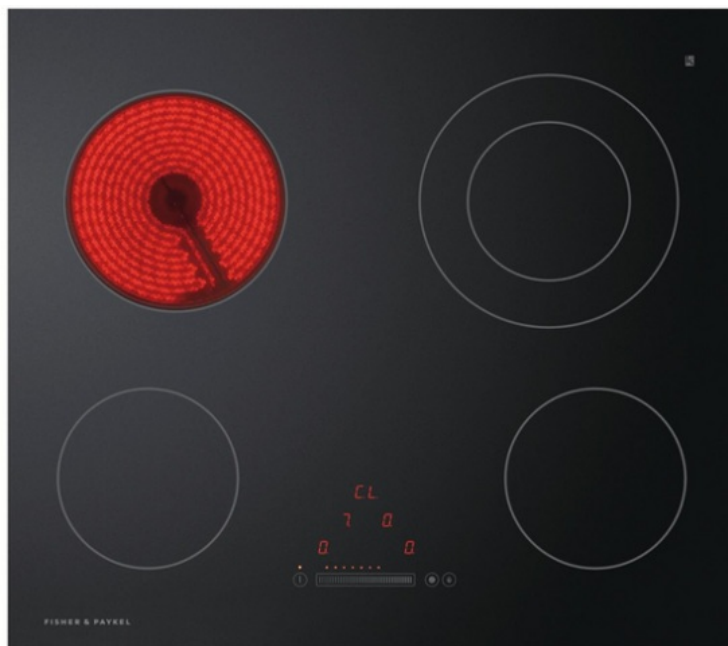


FISHER AND PAYKEL CI905DTTB1 Zone Induction Modular Cooktop User Guide

[Home](#) » [FISHER and PAYKEL](#) » FISHER AND PAYKEL CI905DTTB1 Zone Induction Modular Cooktop User Guide



FISHER & PAYKEL



MODULAR COOKTOP
FLUSH AND PROUD INSTALLATION
MULTIPLE PRODUCT WITH DOWNDRAFT VENTILATION
CI905DTTB1, CI764DTTB1, CI604DTTB1, CI392DTTB1, CI392DB1,
CI302DB1, CIT392DX1, CIT302DX1, CD13DB1, CD13DG1, CI905DTTG1,
CI764DTTG1, CI604DTTG1, CI392DTTG1, CI392DG1 and CI302DG1
models
INSTALLATION GUIDE

Contents

- 1 SAFETY AND WARNINGS
- 2 COMPONENTS REQUIRED
- 3 ACCESSING YOUR PRODUCT SPECIFICATIONS
- 4 CHECK CLEARANCES
- 5 PRIOR TO INSTALLATION
- 6 UNPACK ALL PRODUCTS
- 7 PREPARE PRODUCTS
- 8 INSTALL IN CUTOUT
- 9 ALIGN PRODUCTS
- 10 SECURE TO CUTOUT
- 11 CONNECT POWER
- 12 RATING PLATE LOCATIONS
- 13 INSTALL DUCTING
- 14 LINK PRODUCTS
- 15 INSTALLER CHECKLIST
- 16 Documents / Resources
 - 16.1 References
- 17 Related Posts

SAFETY AND WARNINGS



WARNING!



Electric Shock Hazard

Failure to follow this advice may result in electric shock or death.

- Disconnect the appliance from the mains electricity supply before carrying out any work or maintenance.
- Connection to a good earth wiring system is essential and mandatory.
- Alterations to the domestic wiring system must only be made by a qualified electrician.



WARNING!



Cut Hazard

Failure to use caution could result in injury.

- Take care: some edges are sharp.

READ AND SAVE THIS GUIDE

General Use

- Read these instructions carefully before installing this product.
- Save these instructions for the local electrical inspector's use.
- Installation must comply with your local building and local electricity regulations.
- This appliance is to be installed and serviced only by Fisher & Paykel trained and supported service technician or qualified person.
- The manufacturer accepts no responsibility for the incorrect installation of appliances.

- Incorrect installation may result in personal injury, damage to property and may invalidate any warranty or liability claims.
- Do not modify this appliance.
- Do not use or store flammable materials on or near this appliance.
- Packing elements (eg plastic bags, polystyrene foam, staples, packing straps etc) and tools should not be left around during and after installation, especially if they are within easy reach of children, as these may cause serious injuries.
- Make sure you recycle the packaging material.
- Before disposing of any appliance, make sure that it can no longer be used and that all hazardous parts are removed or made harmless, so that children playing with the old appliance cannot harm themselves.
- Only genuine replacement parts may be used for servicing the appliance. These are available from your nearest Fisher & Paykel Service Center.
- This cooktop must be connected to the mains power supply only by a suitably qualified person.
- DO NOT use adapters, reducers, or branching devices when connecting the cooktop to the mains power supply to prevent overheating and fire.
- The power supply cable must not touch any hot parts and must be positioned so that its temperature will not exceed 75°C at any point.
- This cooktop requires adequate supply of cool air to fully function. The base of the cooktop must have direct unrestricted ventilation to the room where the cooktop is installed. There must be a 4mm air gap at the front of the cooktop.
- Exhaust air must not be discharged into a flue that is used for exhausting appliances burning gas or other fuels.
- **CAUTION:** This appliance is not intended to be used with gas hobs.
- Refer to the Safety Guide supplied with your product for a complete list of warnings.

All imagery shown in this guide is representative. Your product may differ.
Both flush and proud installations are possible. Refer to the planning guide for details.

COMPONENTS REQUIRED

- Communication cable (1)
- Shims (6)
- T spacer (2)
- Securing brackets (4)
- Supplied: Induction Cooktop and Teppanyaki
- Clamp screws (4)
- Joiner kit (supplied with auxiliary modules only)

Supplied: Downdraft Ventilation

- Backing plate
- Outlet to suit 2.25" x 12" metal ducting*
- Nuts
- Washers
- Shims (6)

- T spacer (2)
- Securing brackets (4)
- Clamp screws (4)
- External blower
- Ducting

Not supplied

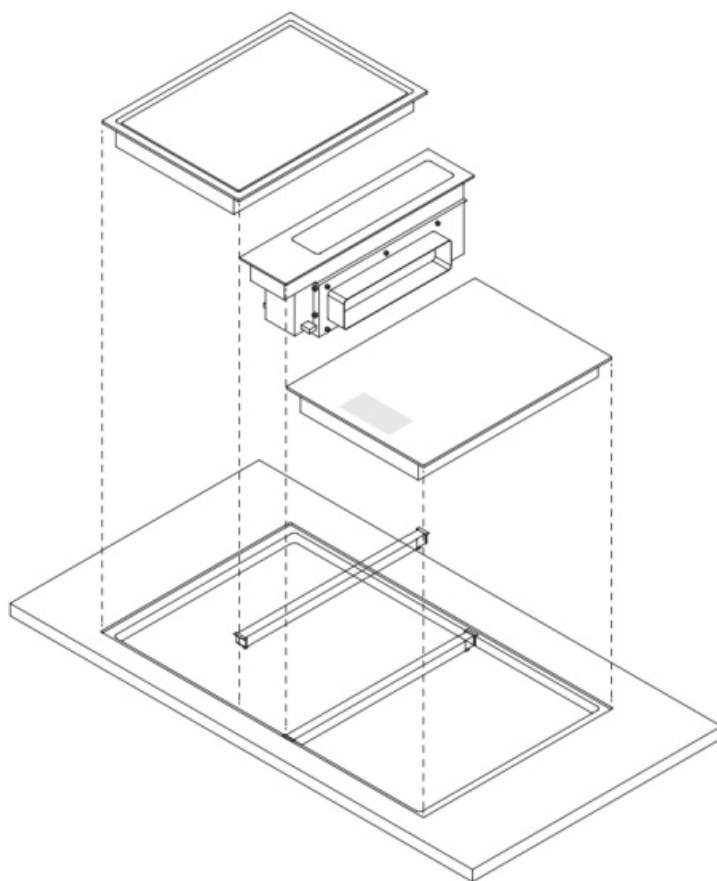
- Silicone gun
- Phillips screwdriver
- Level
- Box cutter
- Router
- Hex key
- Spanner
- Masking tape
- Duct tape
- Black installations:
Black, matte finish silicone rated to 210°F (100°C) or above**
- Grey installations:
Grey, matte finish silicone rated to 210°F (100°C) or above***

ACCESSING YOUR PRODUCT SPECIFICATIONS

For full product, cabinetry and service specifications, refer to the Planning Guide. To access the Planning Guide, scan the QR code or visit fisherpaykel.com/specify. Search by appliance type, product name or model code.

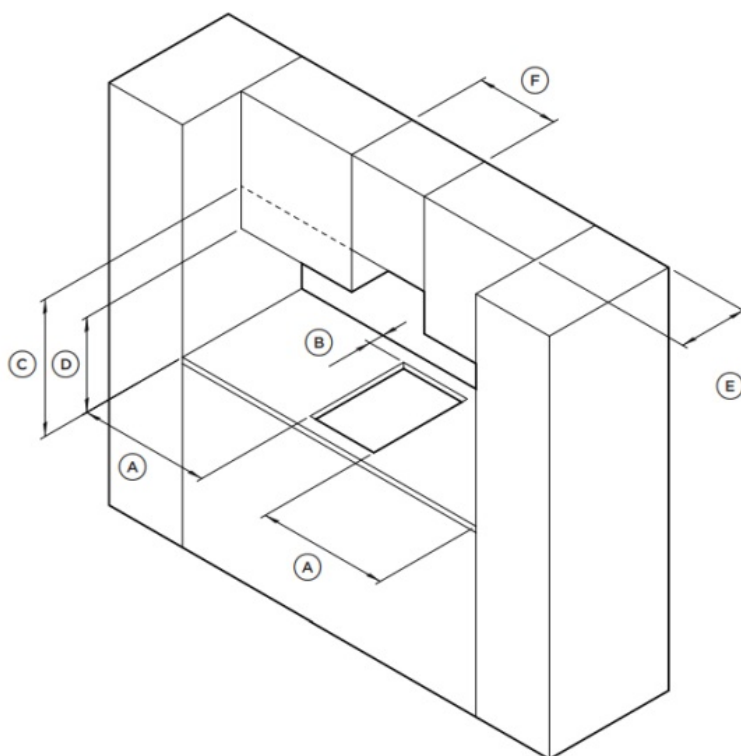


<http://fisherpaykel.com/install>



CHECK CLEARANCES **IMPORTANT NOTE**

Ensure clearances are achieved for the product with the greater clearance requirements.



CABINETRY CLEARANCE DIMENSIONS	INDUCTION AND TEPPANYAKI MODELS MM
A Minimum clearance from side edges of cutout to nearest combustible surface	29
B Minimum clearance from rear edge of cutout to nearest combustible surface	21
C Minimum clearance from benchtop to: Overhead cabinet centered above the cooktop (non combustible) Rangehood or downward facing combustible surface Overhead exhaust fan	500 610 610
D Minimum clearance from countertop to overhead cabinet not directly above cooktop	450
E Maximum depth of overhead cabinetry	330
F Minimum distance between overhead cabinets (not centered above cooktop)	combined cooktop width

CHECK CLEARANCES

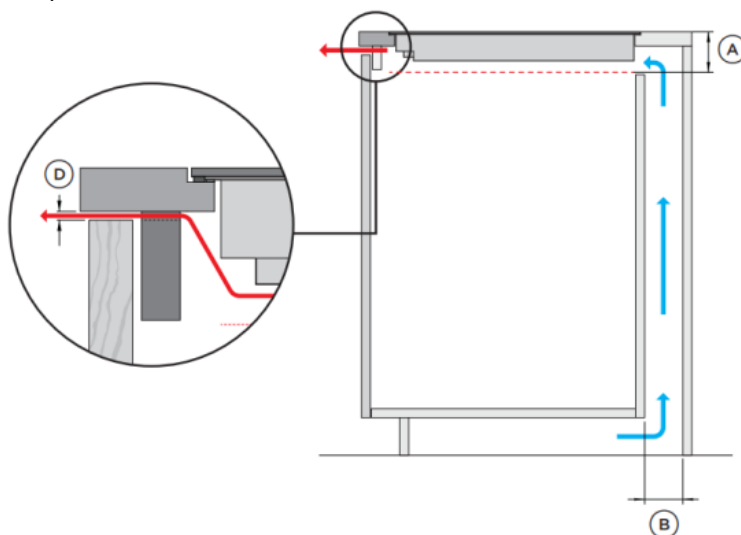
VENTILATION OVERVIEW

The Induction and Teppanyaki modules require ventilation to allow cooling of the electronic components within the chassis. When multiple products are installed their individual ventilation requirements must also be combined. For detailed ventilation guidance, refer to the planning guide.

VENTILATION OPTION 1

INTAKE VIA SERVICE CHANNEL

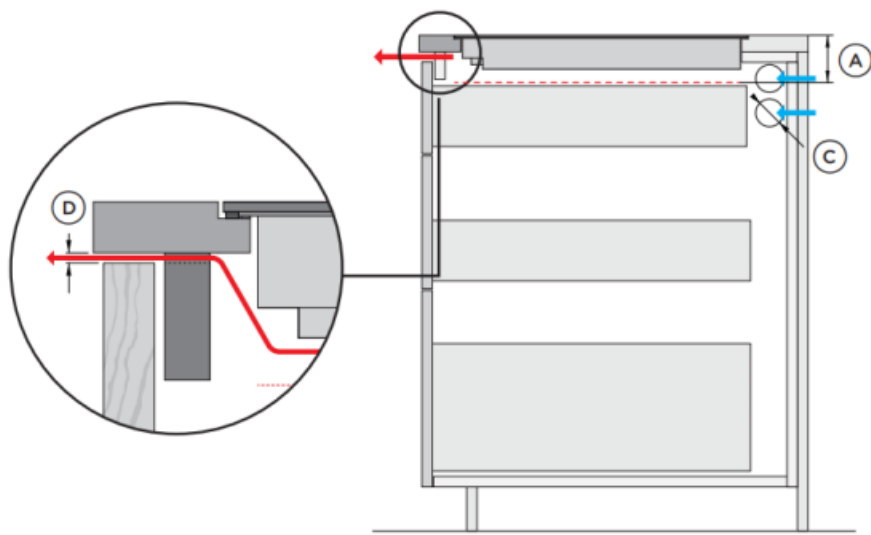
Air is drawn up from the kick cavity through service channel at rear of cabinetry. If cavities are sealed, ventilation holes in toe kick panel are required.



VENTILATION OPTION 2

INTAKE VIA ADJACENT CABINETS

2x Ø50 holes are required in each side wall through to adjacent cabinets. Total of 4x holes required.



CLEARANCE REQUIREMENTS	mm
A Clearance below chassis from top of cook surface	
– Induction	72
– Teppanyaki	86
– Gas on Glass	76

VENTILATION REQUIREMENTS

INTAKE at rear	mm	cm ²
B via service channel, min depth	20	–
C through adjacent cabinets, per side wall*	2x Ø50	40

OUTLET at front*	w x h	cm ²
D 4mm gap along width of chassis		
30cm cook module	255 x 4	10
39cm cook module	340 x 4	14
60cm cook module	555 x 4	22
76cm cook module	715 x 4	30
90cm cook module	855 x 4	34

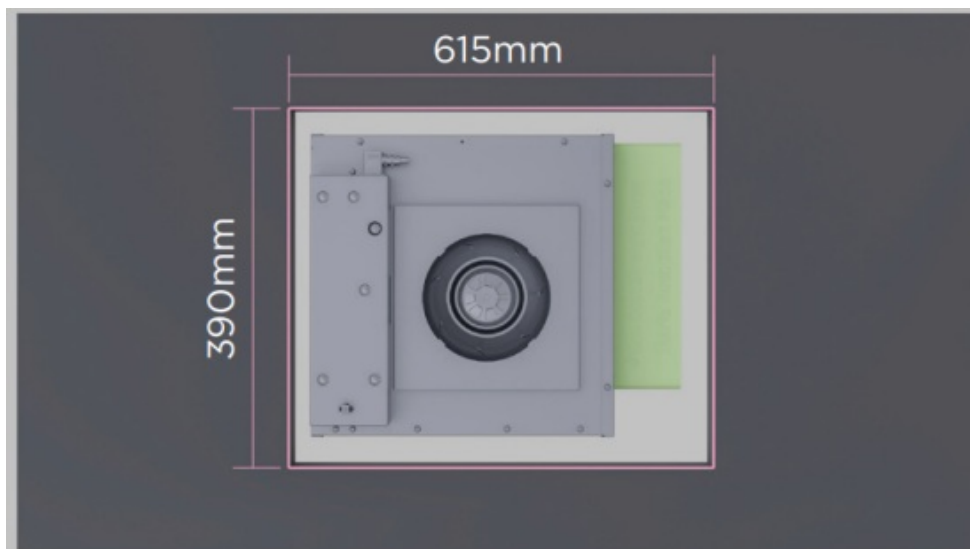
* vents with equivalent-sized area possible.
Must be positioned in front of product.

PRIOR TO INSTALLATION



fisherpaykel.com/specify

1. Ensure cabinetry and servicing specifications have been met and clearances have been considered. Refer to the Planning Guide for details.

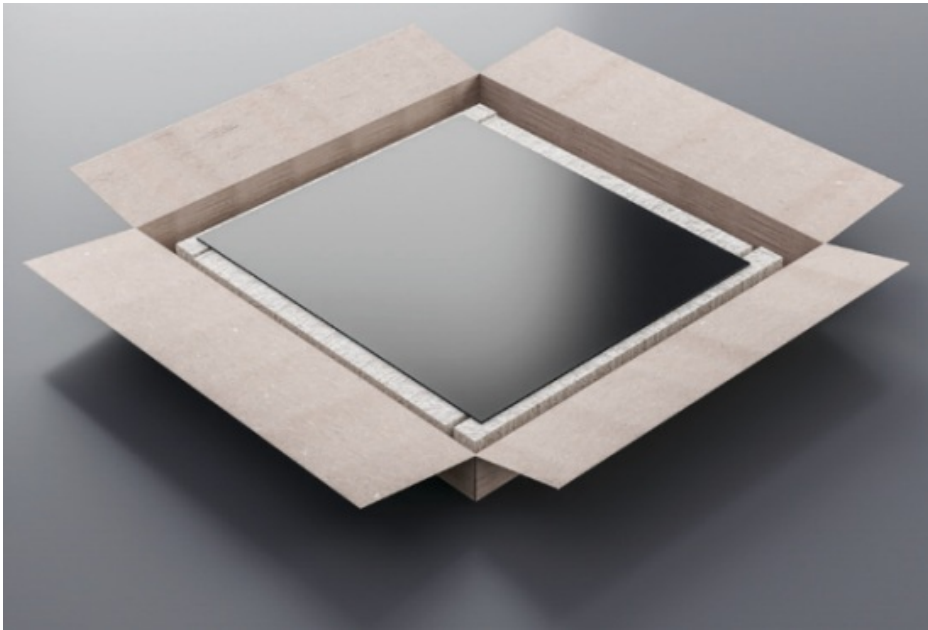


2. Create a 615x390mm cutout in the base of the cavity for the external blower.
Ensure cutout is oriented correctly for selected ducting option.

UNPACK ALL PRODUCTS



1. Ensure all products and accessories are present.



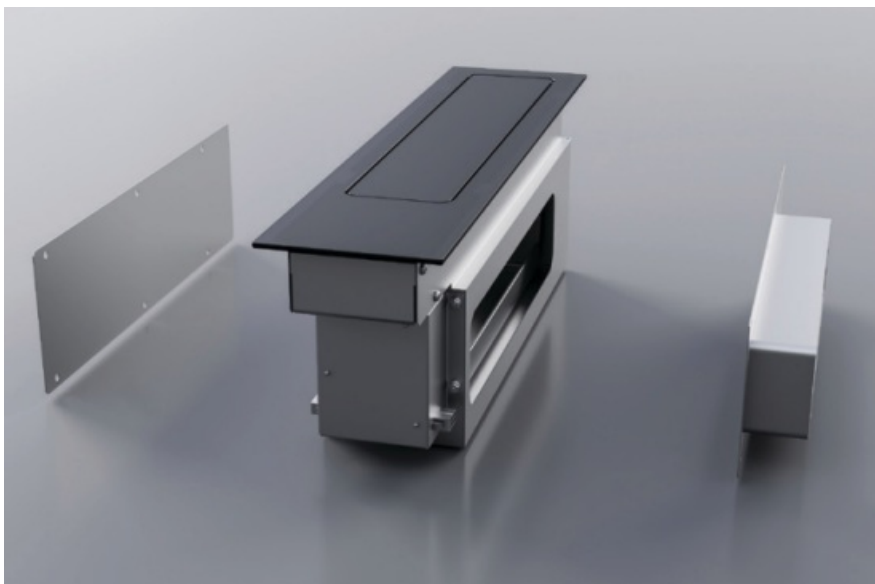
2. Carefully remove products from cartons. Set aside on a protected surface. Dispose of packaging responsibly.



3. Test electrical connections of all products before proceeding with installation.

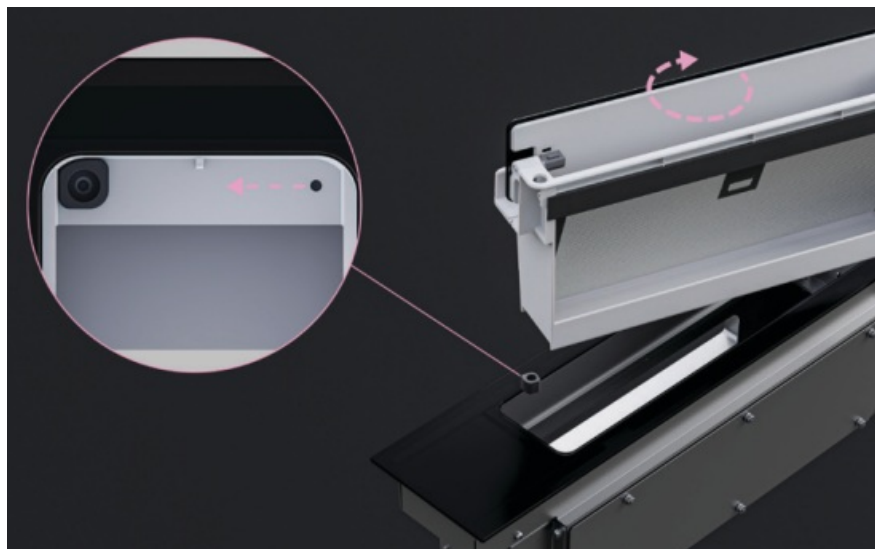
PREPARE PRODUCTS

- 1.



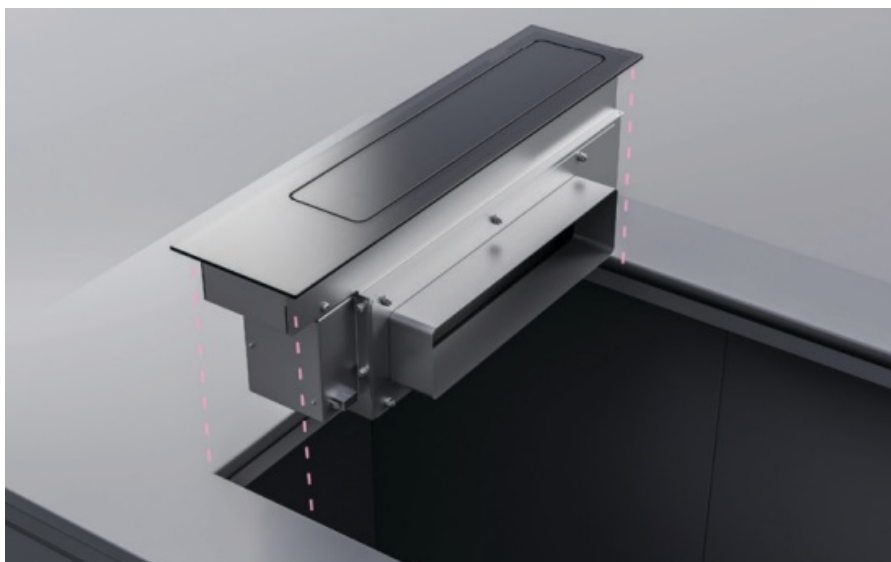
Remove foam tape backing before attaching the downdraft outlet and backing plate using the supplied nuts and

washers. Ensure ducting orientation has been considered.



2. If required, lift the inner box out of the chassis. Remove both downdraft alignment guides and refit on the opposite side. Ensure the grease filter faces the outlet.

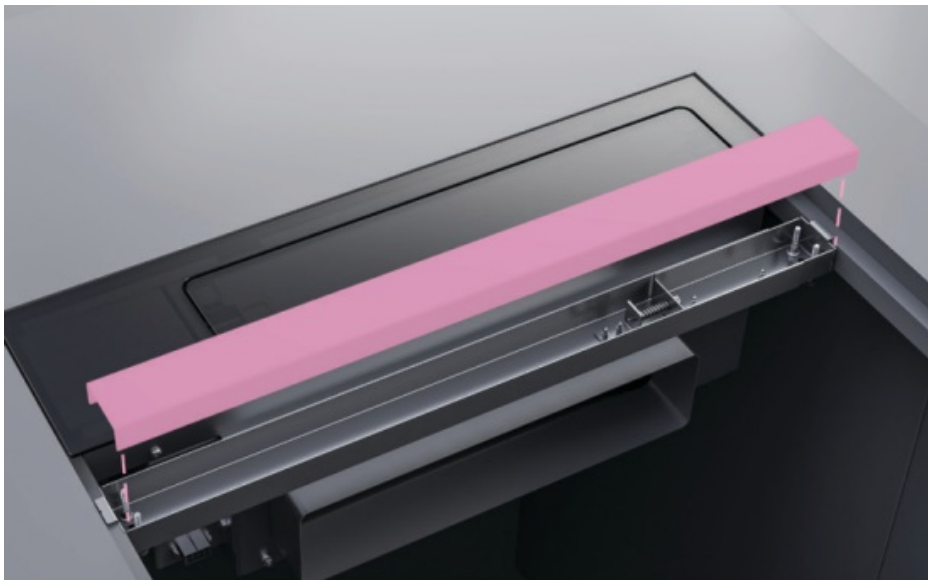
INSTALL IN CUTOUT



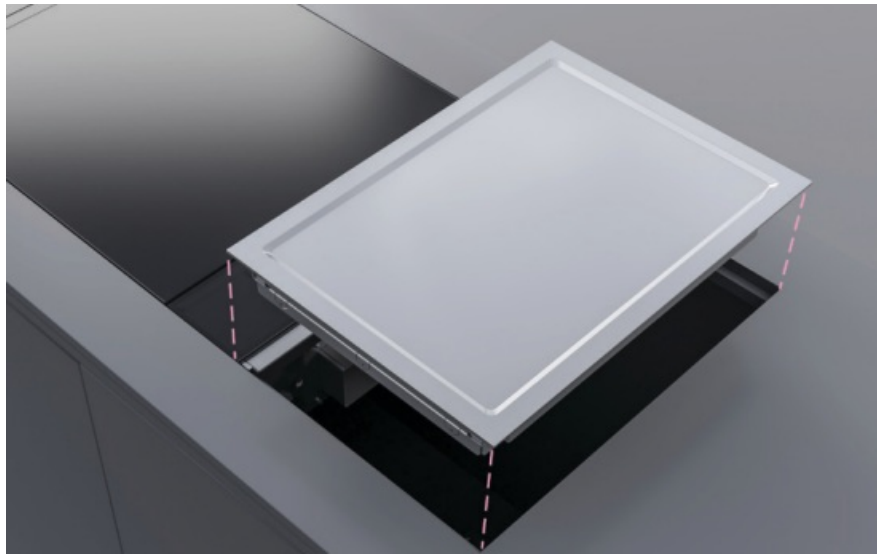
1. Gently lower the first product into the cutout.



2. Align the rear of the joining bracket to the back edge of the cutout and slot into place.



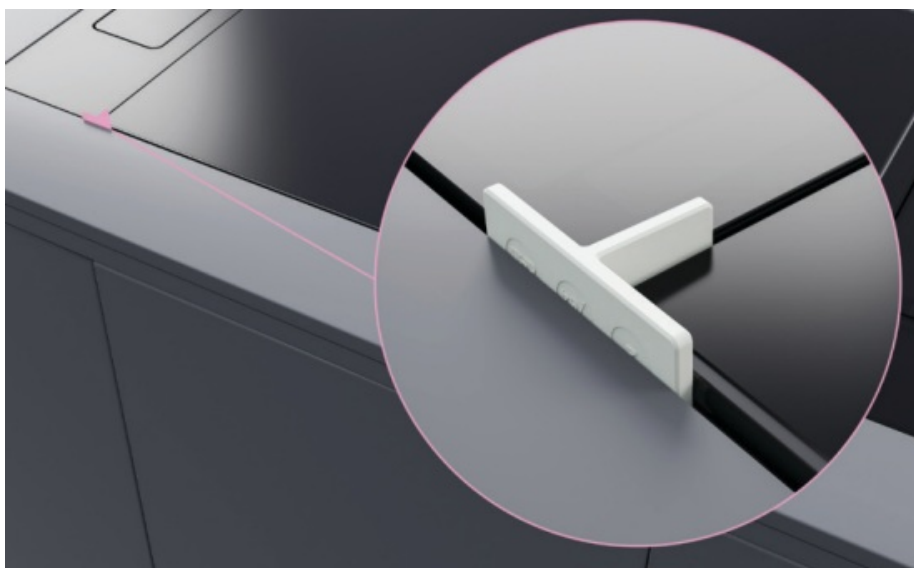
3. Fit cover onto joining bracket before sliding it under the adjacent product.



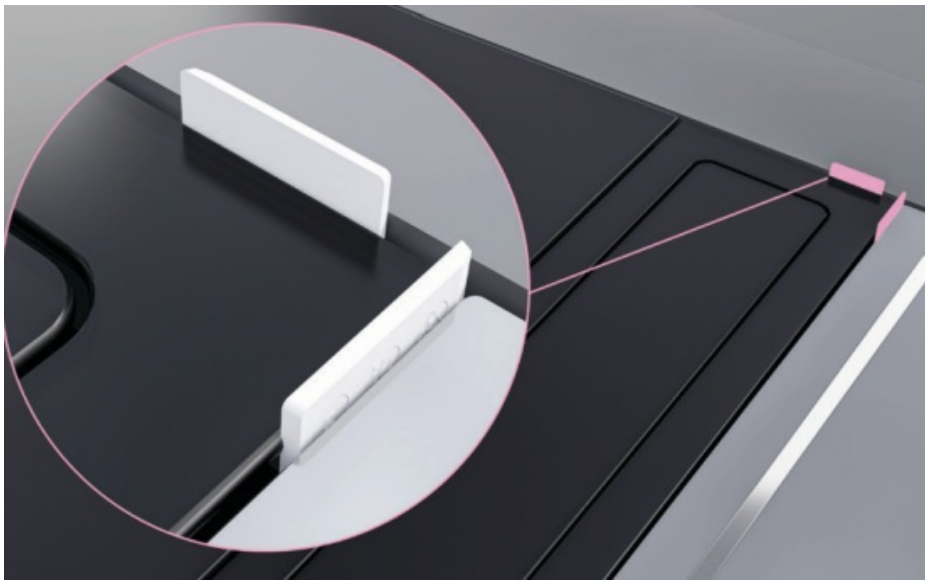
4. Gently lower additional products and joining strips into cutout as required.

ALIGN PRODUCTS

1.



Slot the T spacers between the products. Adjust positioning to ensure even spacing between products is achieved.



2. **Flush installations:**

Place the shims around the outer edges of the cutout.

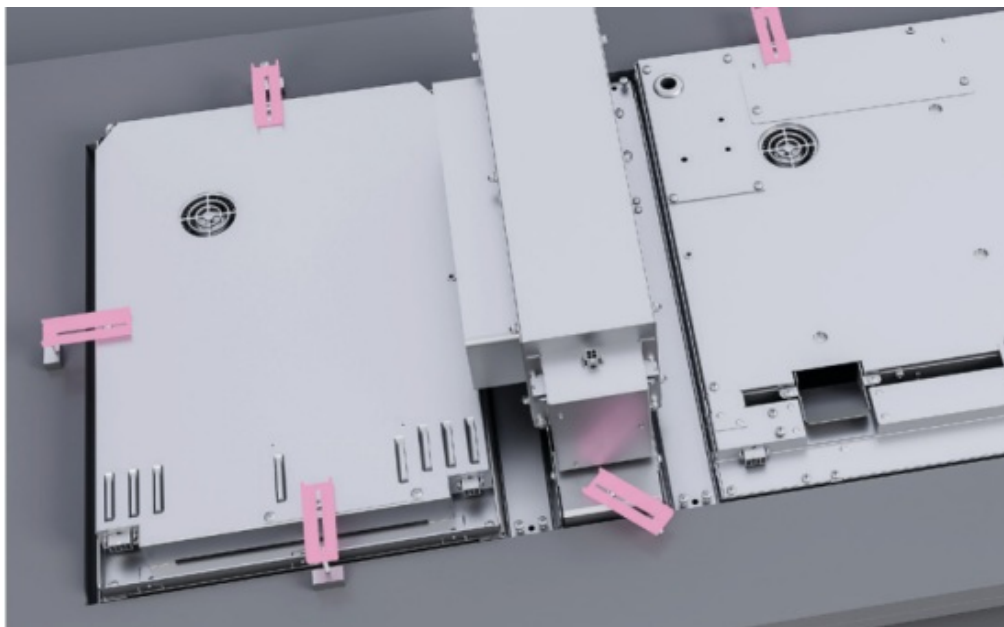
Adjust positioning to ensure even spacing around the product set is achieved.



3. Place the shims on top of the product to gauge what thickness is required to create a level installation.
Slot the shims under the products to raise as needed.

SECURE TO CUTOUT

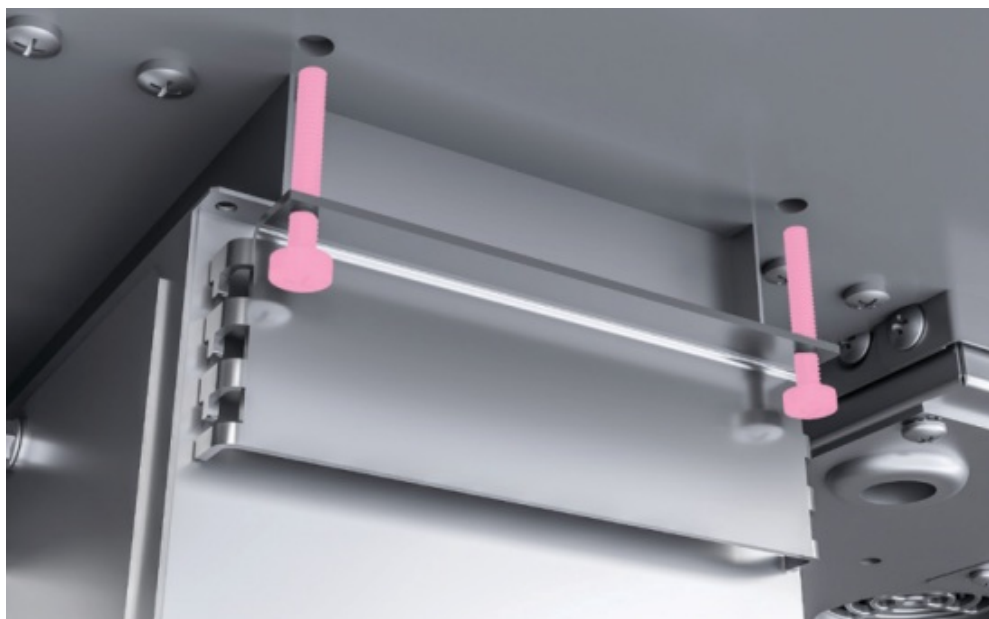
- 1.



Fit the securing brackets to the base of each cooktop. A minimum of two brackets per cooktop is recommended.



2. Tighten all clamp screws to secure the cooktops to the cutout and joiner strips.



3. Tighten the front and rear clamping bracket screws to secure the downdraft to the cutout.

CONNECT POWER

Before connecting to the mains power supply check that:

- The domestic wiring system is suitable for the power drawn by the cooktop.
- The voltage corresponds to the value given on the rating plate.
- The power supply cable sections can withstand the load specified on the rating plate.

Refer to the Planning Guide for full service information.



fisherpaykel.com/specify

RATING PLATE LOCATIONS

Downdraft Ventilation



Right rear of product

Induction Cooktops



Right rear of product

Teppanyaki Cooktops



Right rear of product

CI302, CI392, CIT302 AND CIT392 MODELS

Single-phase connection

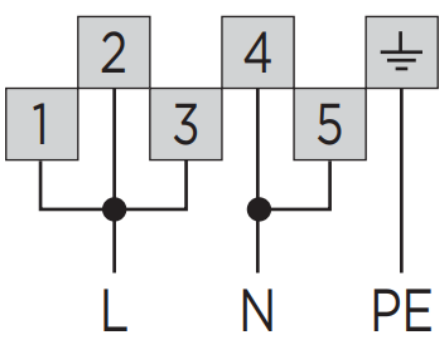
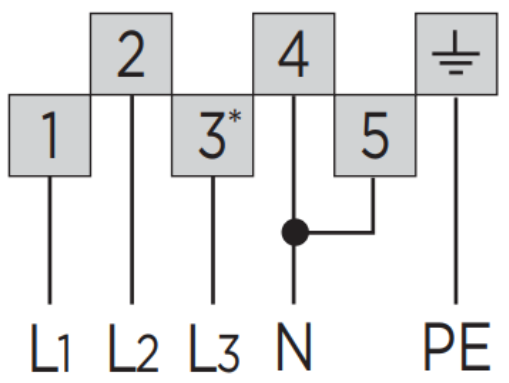
220 – 240V~

The models are supplied with a cable. This must be wired into a suitably rated plug, permanent connection outlet or power isolator.

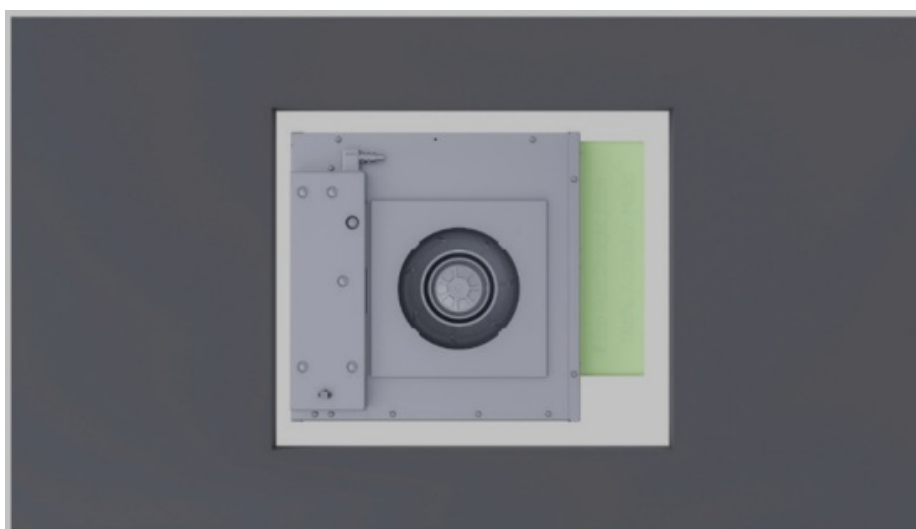
CI604 AND CI764 MODELS

Single-phase connection 220 – 240V~	Two-phase connection 380 – 415V 2N~

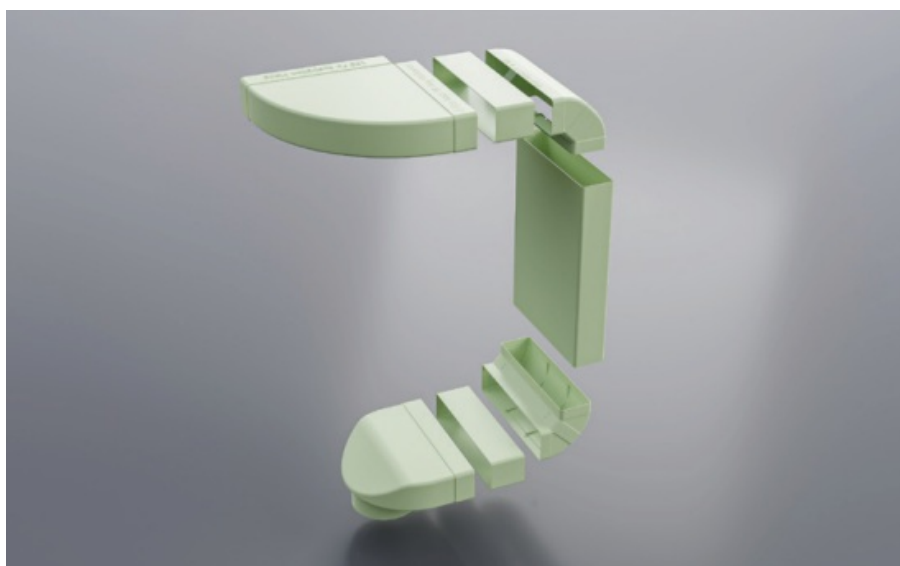
CI905 MODELS

Single-phase connection 220 – 240V~	Two-phase connection 380 – 415V 3N ~
 <p>Diagram showing single-phase connection. Terminals 1, 2, 3, 4, and 5 are shown. Terminals 1 and 3 are connected to L (Line). Terminals 2 and 4 are connected to N (Neutral). Terminal 5 is connected to PE (Protective Earth). The ground symbol is shown next to terminal 5.</p>	 <p>Diagram showing two-phase connection. Terminals 1, 2, 3*, 4, and 5 are shown. Terminals 1, 2, and 3* are connected to L1, L2, and L3 (three-phase lines). Terminals 4 and 5 are connected to N (Neutral). Terminal 5 is also connected to PE (Protective Earth). The ground symbol is shown next to terminal 5.</p>

INSTALL DUCTING



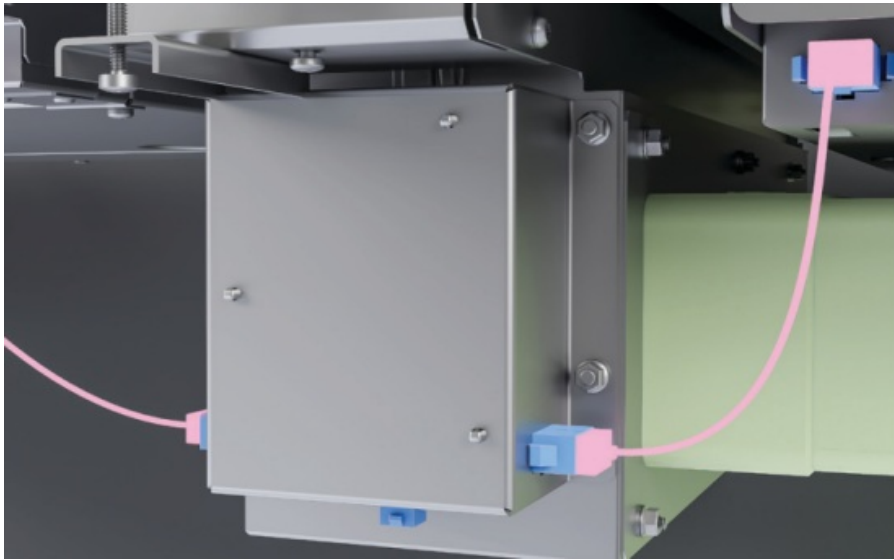
1. Place the external blower into the cutout and connect power cord.



2. Cut ducting to required lengths and slot together. Secure and seal using duct tape.

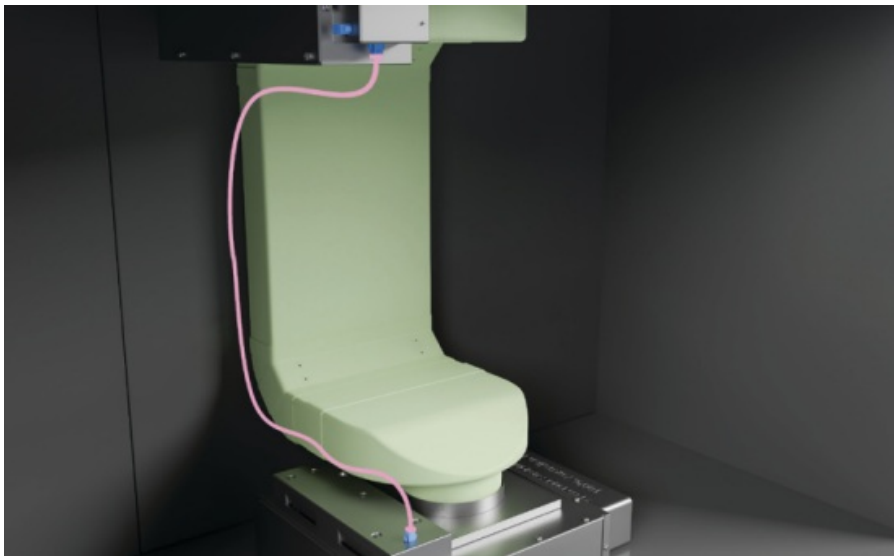
LINK PRODUCTS

- 1.

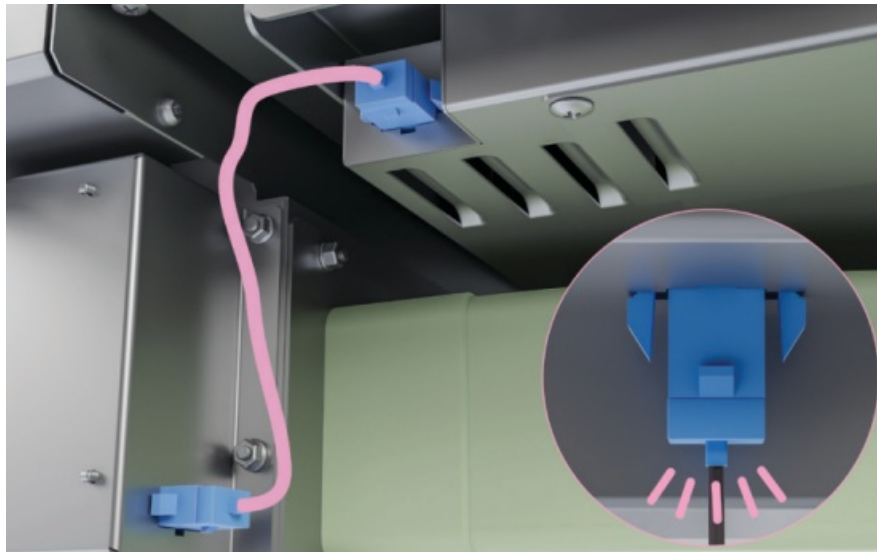


Link each product to the adjacent product using the supplied communication cables.

Ensure 8-pin plugs are only connected to 8-pin sockets and 6-pin plugs connected to 6-pin sockets.



2. Connect the downdraft unit to the external blower via the central communication cable.



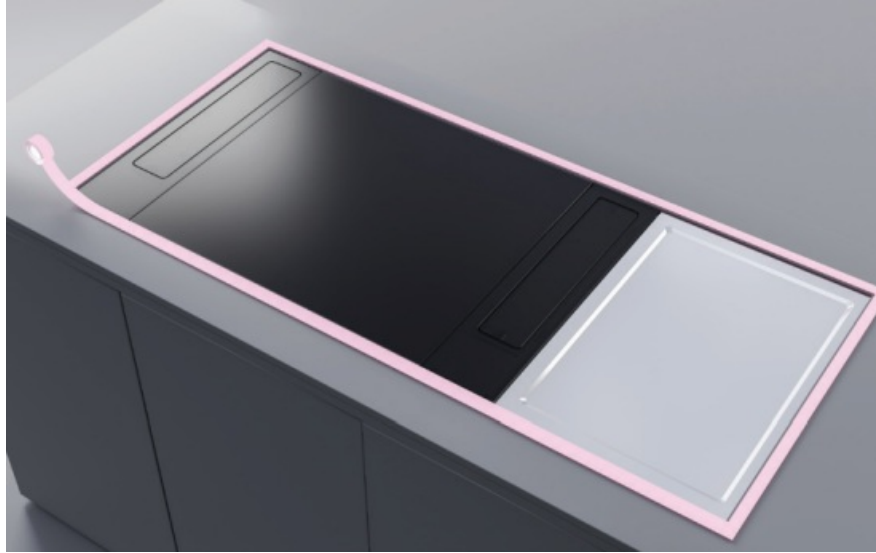
3. Ensure all cables click into place and are routed away from cooktop exhausts.

Secure to cabinetry using the supplied harness retainers.

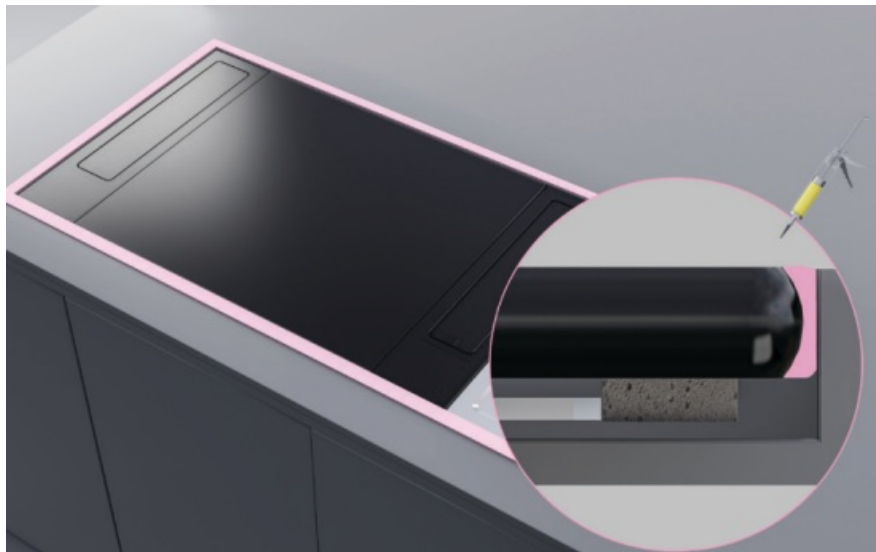
SEAL PRODUCTS INTO CAVITY (FLUSH INSTALLATIONS)

Some silicone products may cause discoloration of the glass, in most cases this will fade as the silicone cures. Avoid applying too much silicon during installation.

1.



Mask the area to be siliconed ensuring all products and the countertop are protected.



2. Carefully apply silicone in the gaps between the countertop and products.

Wipe away any excess silicone and remove mask once silicone has dried.

INSTALLER CHECKLIST

TO BE COMPLETED BY THE INSTALLER

GENERAL

- Specified clearances have been maintained.
- Products are level – front to back and side to side.
- All packaging materials have been removed.
- There is constant flow of cool air from the cabinetry to the base of the products.
- Products have all been securely clamped.
- Communication cables are routed away from cooktop exhausts, secured to cabinetry and are unobstructed by drawers or other objects.
- Module layout configuration has been checked and confirmed.
- Touch controls and displays are functioning.
- Ducting has been secured and taped into place

ELECTRICAL

- Receptacle with correctly rated over-current protection is provided for service cord connection.
- Adequate ground connection established.
- Power supply cable is accessible and is not touching the products.

© Fisher & Paykel Appliances 2024. All rights reserved.

The models shown in this guide may not be available in all markets and are subject to change at any time.

The product specifications in this guide apply to the specific products and models described at the date of issue.

Under our policy of continuous product improvement, these specifications may change at any time.

For current details about model and specification availability in your country, please go to our website or contact your local Fisher & Paykel dealer.

FISHER & PAYKEL



FISHERPAYKEL.COM

431314A 09.23

Documents / Resources

<p>FISHER & PAYKEL</p> <p>MODULAR COOKTOP</p> <p>FISHER AND PAYKEL INSTALLATION MAJORLY DESIGNED WITH REMOVABLE INSTALLATION CONSIDERATION, CONSIDERATION, CONSIDERATION, CONSIDERATION CONSIDERATION, CONSIDERATION, CONSIDERATION, CONSIDERATION CONSIDERATION, CONSIDERATION, CONSIDERATION, CONSIDERATION CONSIDERATION, CONSIDERATION, CONSIDERATION, CONSIDERATION</p> <p>INSTALLATION GUIDE 100 100 100</p>	<p><u>FISHER AND PAYKEL CI905DTTB1 Zone Induction Modular Cooktop</u> [pdf] User Guide CI905DTTB1, CI764DTTB1, CI604DTTB1, CI392DTTB1, CI392DB1, CI302DB1, CIT392DX1, CI T302DX1, CD13DB1, CD13DG1, CI905DTTB1 Zone Induction Modular Cooktop, CI905DTTB1, Zone Induction Modular Cooktop, Induction Modular Cooktop, Modular Cooktop, Cooktop</p>
--	--

References

-  [Shop Luxury Kitchen Appliances | Fisher & Paykel USA](#)
-  [Specifications | Fisher & Paykel Australia](#)
- [User Manual](#)

[Manuals+, Privacy Policy](#)

This website is an independent publication and is neither affiliated with nor endorsed by any of the trademark owners. The "Bluetooth®" word mark and logos are registered trademarks owned by Bluetooth SIG, Inc. The "Wi-Fi®" word mark and logos are registered trademarks owned by the Wi-Fi Alliance. Any use of these marks on this website does not imply any affiliation with or endorsement.