



Fischer 50662 FIND.U Crash Sensor User Manual

[Home](#) » [Fischer](#) » Fischer 50662 FIND.U Crash Sensor User Manual 

Contents

- [1 Fischer 50662 FIND.U Crash Sensor](#)
- [2 Product Information](#)
- [3 Product Usage Instructions](#)
- [4 INSTALLATION INSTRUCTIONS](#)
- [5 Crash Sensor FIND.U User manual](#)
- [6 Declaration of Conformity](#)
- [7 Documents / Resources](#)
 - [7.1 References](#)

FISCHER

Fischer 50662 FIND.U Crash Sensor



Product Information

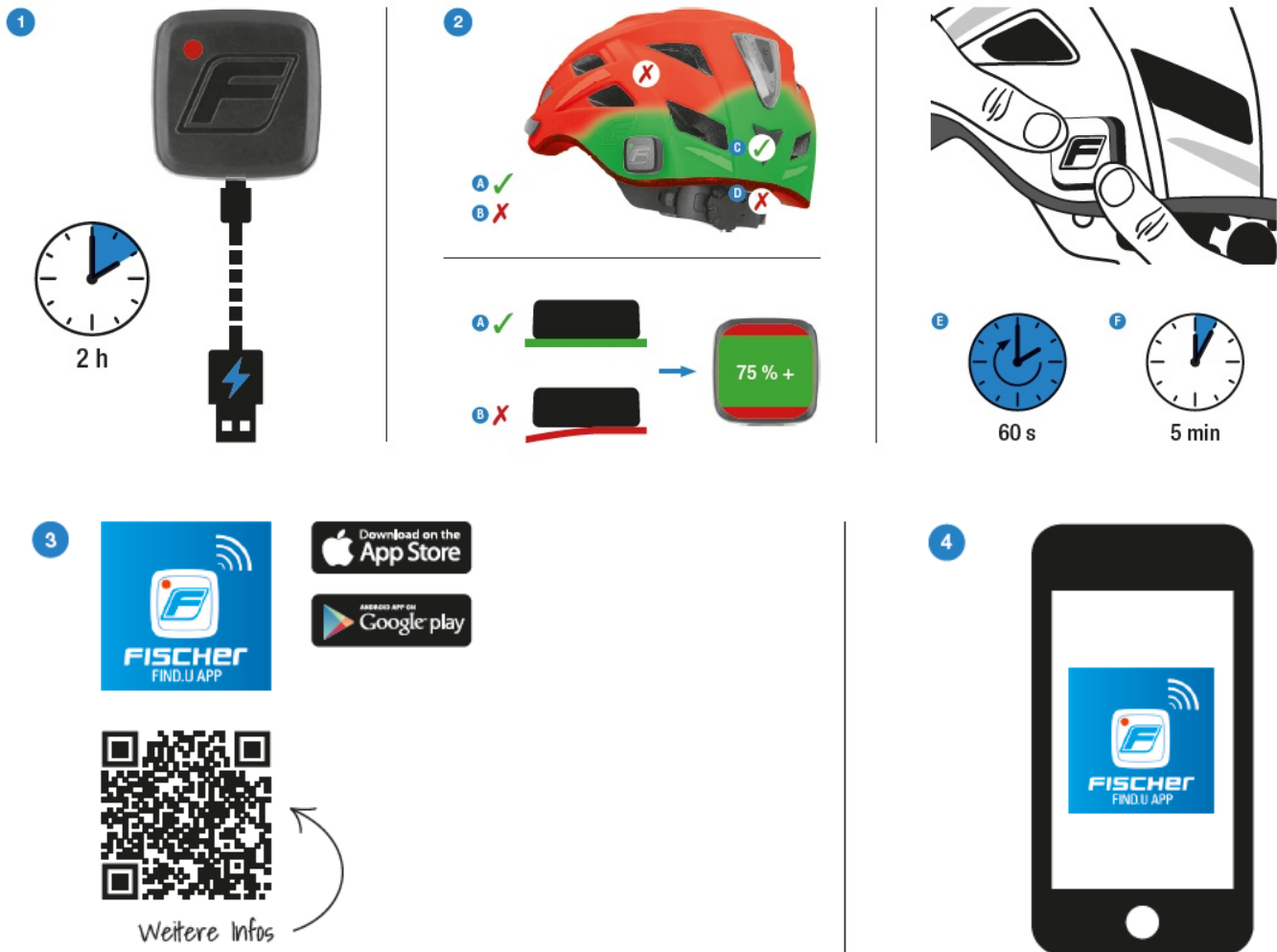
The product is a crash sensor called FIND.U, which comes with an app that needs to be installed for usage. The sensor has a transmission frequency of 2.4 GHz and a maximum radiated output power of < 10dBm. The product complies with Directive 2014/53/EU. The user manual is available in multiple languages.

Product Usage Instructions

1. Charge the sensor before first use.
2. Mount the sensor on the helmet shell by following the instructions provided in the app. Correct mounting involves pressing the sensor onto the rigid foam for 60 seconds and waiting for 5 minutes. Incorrect mounting can lead to improper functioning of the sensor.
3. Install the FISCHER FIND.U app.
4. Follow the instructions provided in the app for users.

Note: It is important to read the complete operating instructions in the app before first use. Also, do not dispose of electronics with household waste, but instead dispose of them in an environmentally friendly manner.

INSTALLATION INSTRUCTIONS



Crash Sensor FIND.U User manual

Important! Please read the complete operating instructions in the FISCHER FIND.U app before first use.

- 1 Charge
- 2 Mounting instructions
- A Correct B Incorrect
- C Helmet shell D Rigid foam
- E Press: 60 seconds
- F Wait 5 minutes
- 3 Install app
- 4 Follow instructions in the app

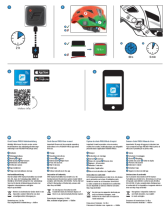
Declaration of Conformity

MTS MarkenTechnikService GmbH & Co. KG hereby declares the wireless system model 50662 complies with Directive 2014/53/EU. For the full text of the EU Declaration of Conformity, please visit <http://iuqr.de/50662>.

- Do not dispose of electronics with household waste, but instead dispose of them in an environmentally friendly manner.
- Transmission frequency: 2.4 GHz

- Max. radiated output power: < 10dBm

Documents / Resources

	<p>Fischer 50662 FIND.U Crash Sensor [pdf] User Manual 50662 FIND.U Crash Sensor, 50662, FIND.U Crash Sensor, Crash Sensor, Sensor</p>
---	--

References

- [iuqr.de/50662](https://www.iuqr.de/50662)

Manuals+.